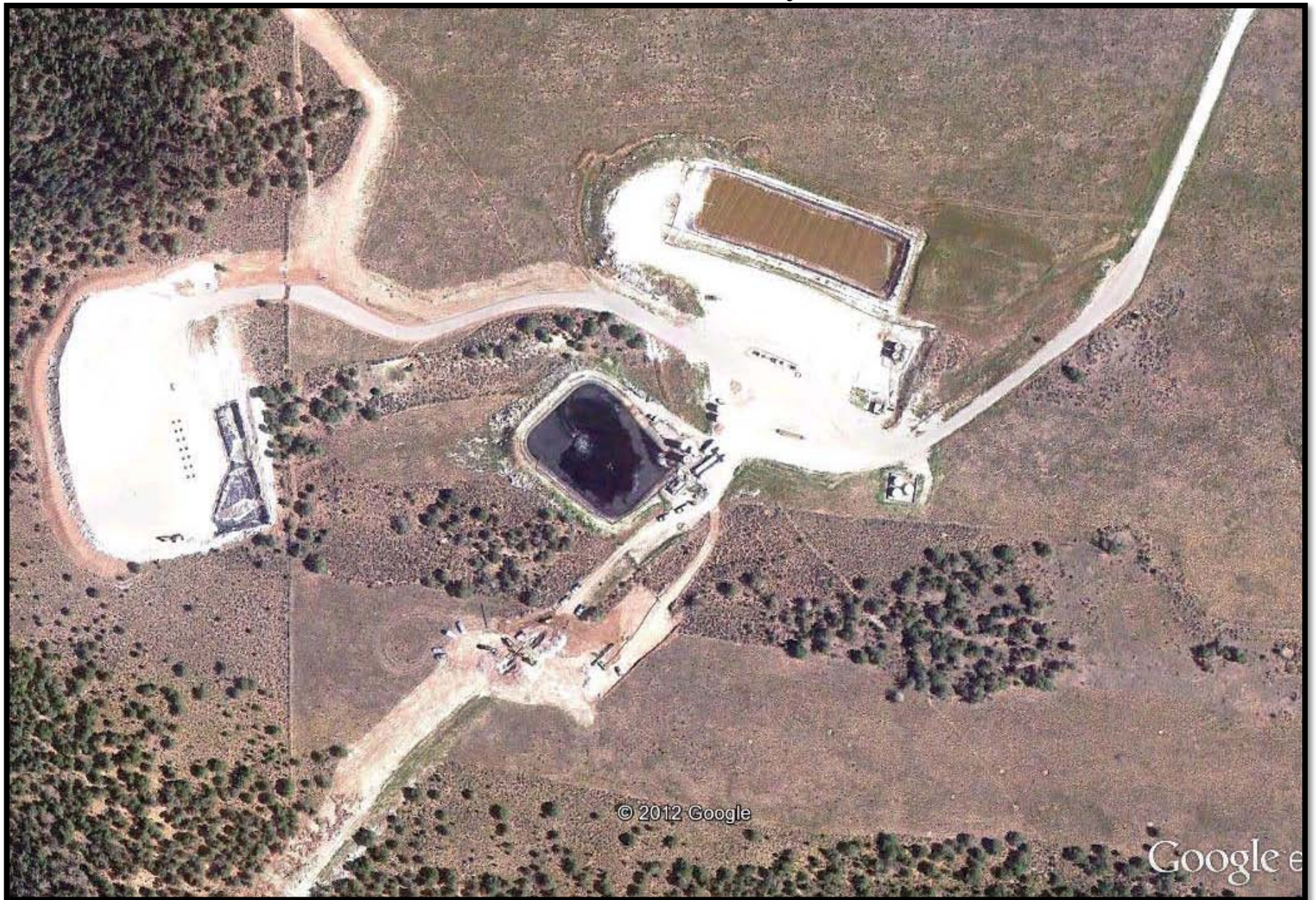


## Williams Pit #296913 Jolley 41-D

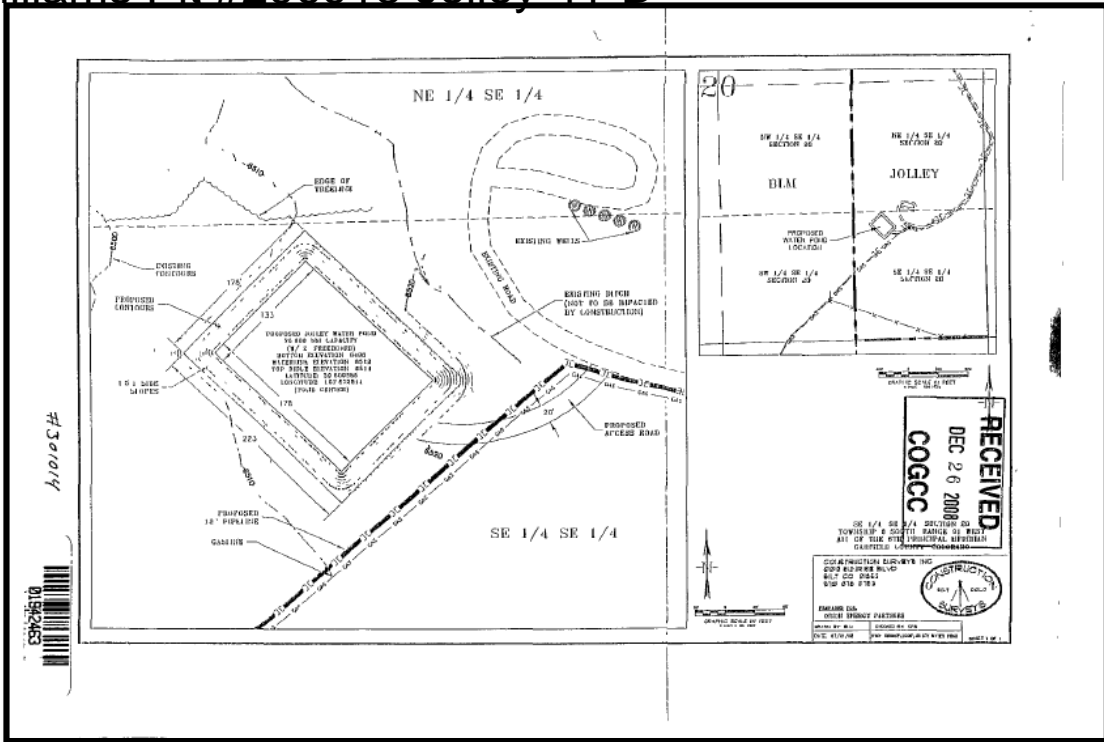


2011 aerial photo – New Facilities/well sites, road additions & Gas Pipeline addition.

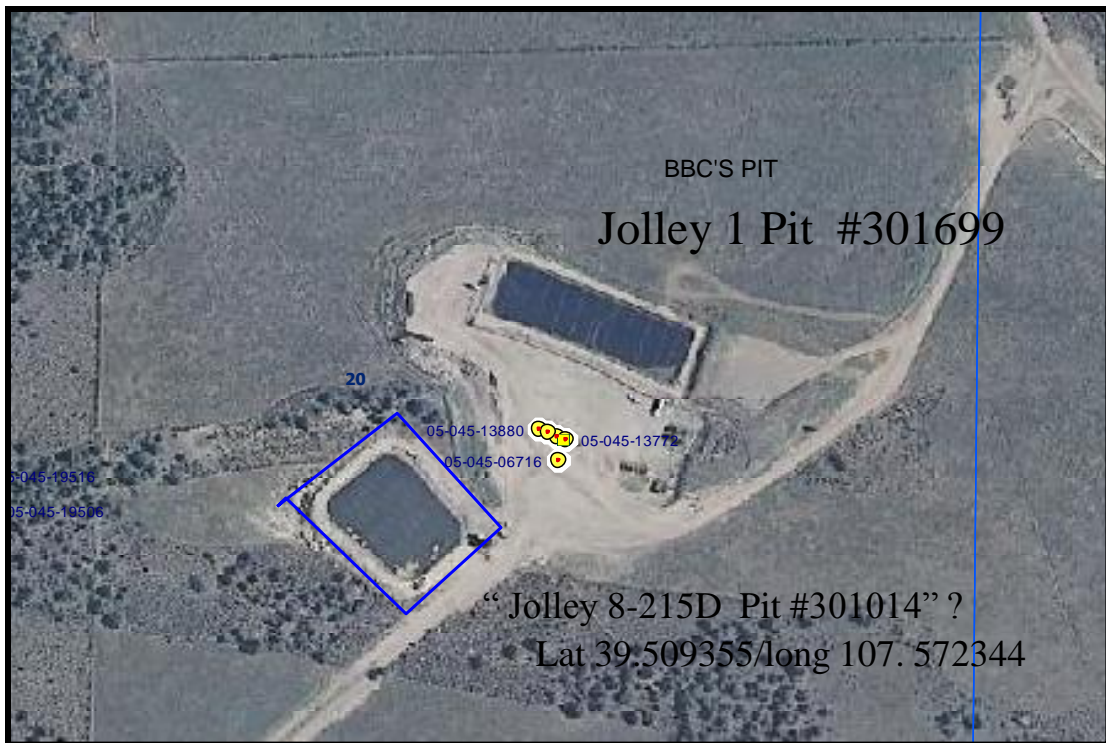


# Williams Jolley Pit #301014

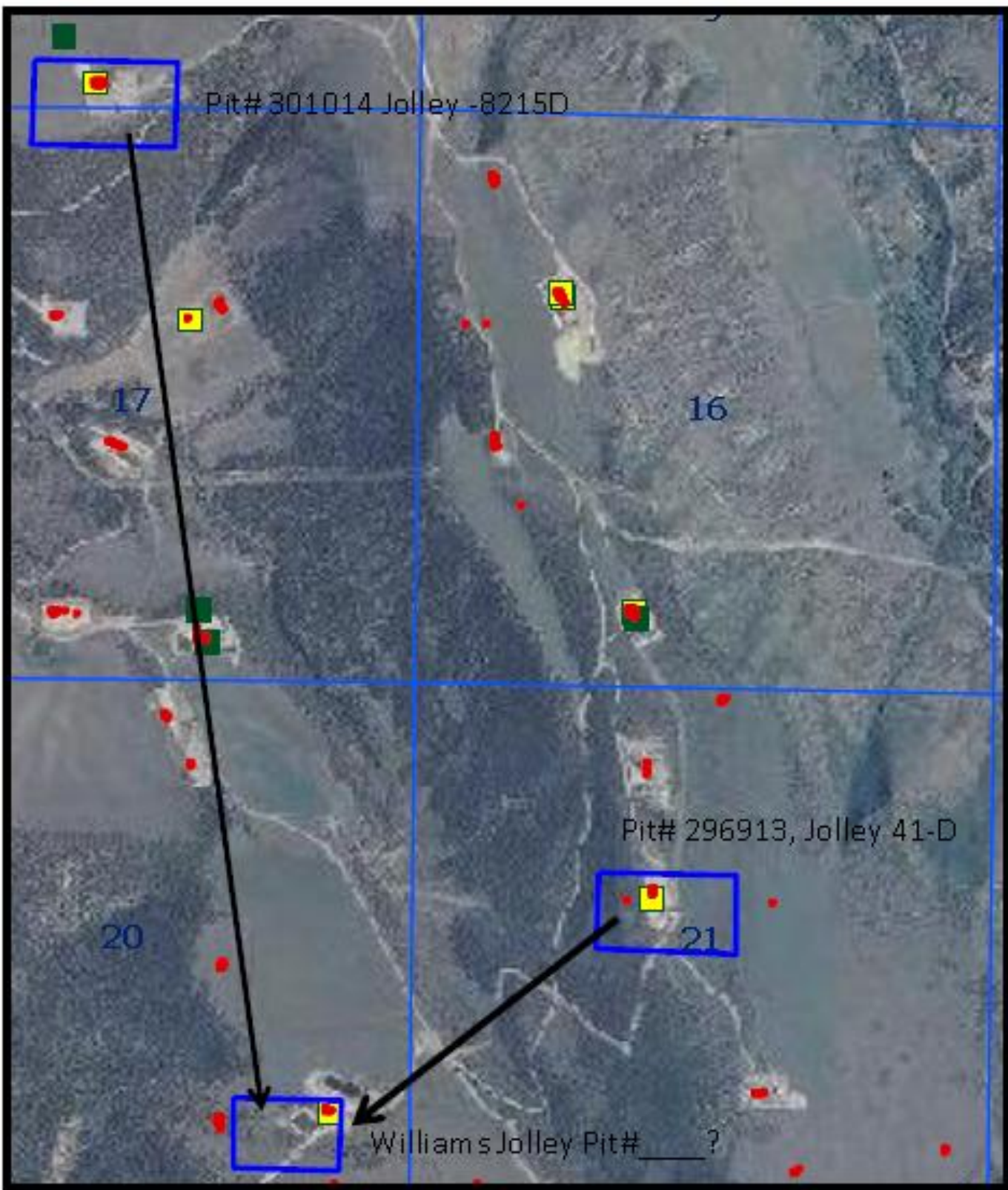
Williams Pit #296913 Jolley 41-D



Pit Construction Diagram attached w/pit permit



2009 Aerial Photo





January 26, 2012 inspection Williams Pit #296913 Jolley 41-D



Viewing East



Close-up Viewing East



Viewing West



Viewing East



January 26, 2012 inspection

Williams Pit #296913 Jolley 41-D



Viewing northwest: Tank Battery adjacent right



Viewing southwest –receiving area and truck discharge ports



Viewing northeast– Main intake lines & “produced water only” sign



Viewing northeast



January 26, 2012 inspection Williams Pit #296913 Jolley 41-D



Viewing South: active construction activity south of pit



Adjacent location: Associated facilities of gas scrubber



Viewing East: End spill extend




Viewing south: Active construction activity for Gas pipeline and associated facilities

# Williams Pit #296913 Jolley 41-D

October 20, 2010 inspection

## COGIS - Field Inspection Report

	
Facility/Location ID: <b>296913</b>	Name: <b>JOLLY 41D #20-691</b>
Location: <b>SENW 21 6S 91W</b>	Lat: <b>39.51534</b> Long: <b>-107.561</b>
Operator #:	Operator Name: <b>WILLIAMS PRODUCTION RMT</b>
Inspection Date: <b>10/20/2010</b>	Inspector: <b>SORAYA BAROUMAND</b>

Inspection was: **Unsatisfactory**

Insp. Type: **SR**      Insp. Stat: **AO**      Reclamation (Pass, Interim or Fail): P&A (Pass/Fail):  
 Brhd. Pressure:      Inj. Pressure:      T-C Ann. Pressure:      UIC Violation Type:  
 Violation: **Y**      NOAV Sent: **N**      Date Corrective Action Due:      Date Remedied:

### Pit Inspection

Pit Type: **PW**      Oil on Pit: **Y**      Freeboard:  
 Number of Pits: **1**      Number covered or lined: **0**      Number uncovered or unlined: **0**

Comments: **CONDENSATE ACCUMULATION, NETTING RECENTLY INSTALLED, A NEW SURFACE LINER INSTALLED, 6' + FREEBOARD, PIT IS FULLY ENCLOSED.**

Pit Type: **SP**      Oil on Pit:      Freeboard:  
 Number of Pits:      Number covered or lined:      Number uncovered or unlined:

Comments: **MULTI-PAD PRODUCTION PIT**

### Field Inspection Comments and Observations

Insp. Comment	Inspection/Violation Comments
ACTION	NO SIGN DESIGNATING FACILITY. TANK BATTERIES HAVE INADEQUATE BERMING. UNAUTHORIZED USE OF A MULITI-PAD PRODUCTION PIT. RESUBMIT A FORM 15 PIT PERMIT THAT DESCRIBE THE OPERATION, USE, VOLUMES, LOCATION, AND OTHER DESIGN/ENGINEERING MEASURES. CONFER W/MARGARET ASH, FOR PERMIT REQUIREMENTS.
FIREWALL	INADEQUATE GRAVEL BERMS FOR TANKS
GENHOUSE	GOOD, FRESH SURFACE GRAVEL.
MISC	1" SURFACE NETTING RECENTLY INSTALLED. THE PIT USE AND LOCATION IS DIFFERENT THAN THE INFORMATION PROVIDED. A RESUBMITTAL OF FORM 15 IS REQUIRED.
SPILCOM	MODERATE STAINING NEAR TANK BATTERIES. NO OTHER SPILL/RELEASE WERE OBSERVED.
SURFRH	STORMWATER DISCHARGE CONTAINMENT NEEDS IMPROVEMENT (TANK BATTERY). LOCATION IS UPGRADIENT AND ADJACENT TO NATURAL DRAINAGE FEATURES AND NEARBY DITCHES.
TANKBAT	SEVERAL TANK BATTERIES - TWO OPERATIONAL, THREE RECENTLY STAGED, BUT NOT IN USE AT TIME OF INSPECTION



## ~~Williams Jolley Pit “301014”~~



Viewing northeast: Close up of Williams Jolly ~~Pit 301014,~~

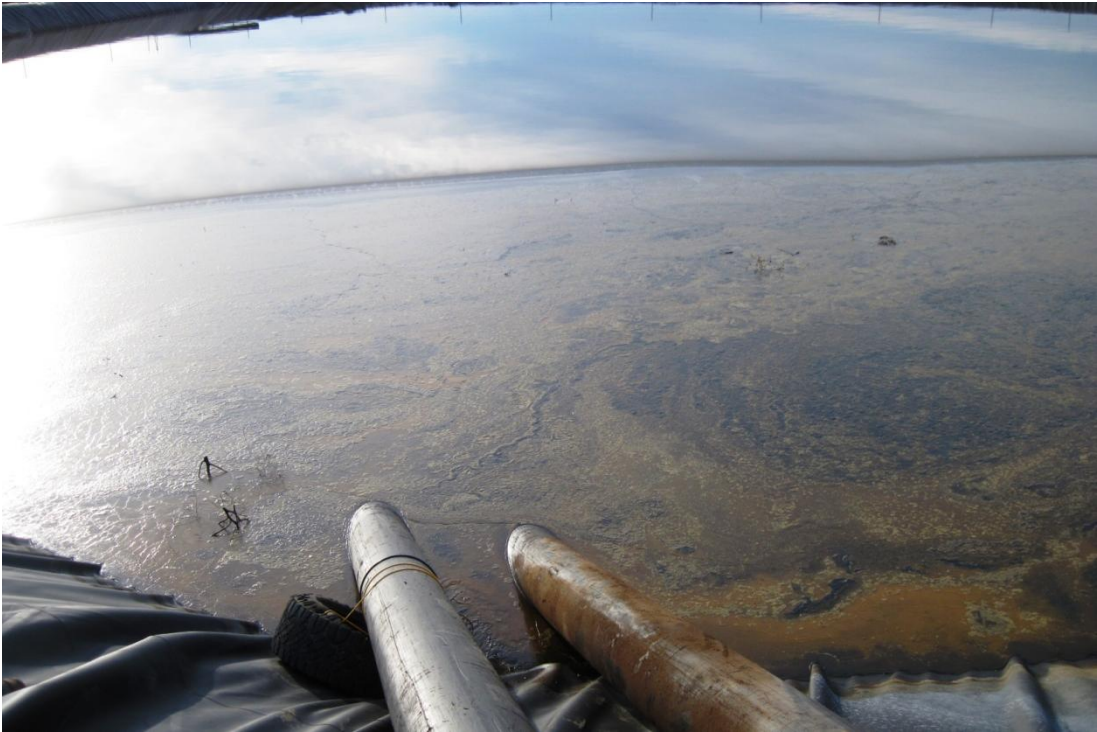
September 15, 2010 inspection photos



~~Viewing~~ North: Williams Jolley Pit ~~301014:~~ Tanks have negligible gravel berms. Further north is the BBC Jolley #1 Pit.



# Williams Jolley Pit “~~301014~~”



Close up: Condensate forming near northeast corner, pit has since been entirely 1" nylon mesh netted.

September 15, 2010 inspection photos



Viewing East: discharge pipes



# Williams Jolley Pit “~~301014~~”



Viewing West, along access entrance, pipes, leave a series of 4 tank batteries, then enter Pit system and tank batteries.

## September 15, 2010 inspection photos



Viewing West: small drainage way: runs between Williams Pit to the left, (south) and BBC Pit to the right (north)