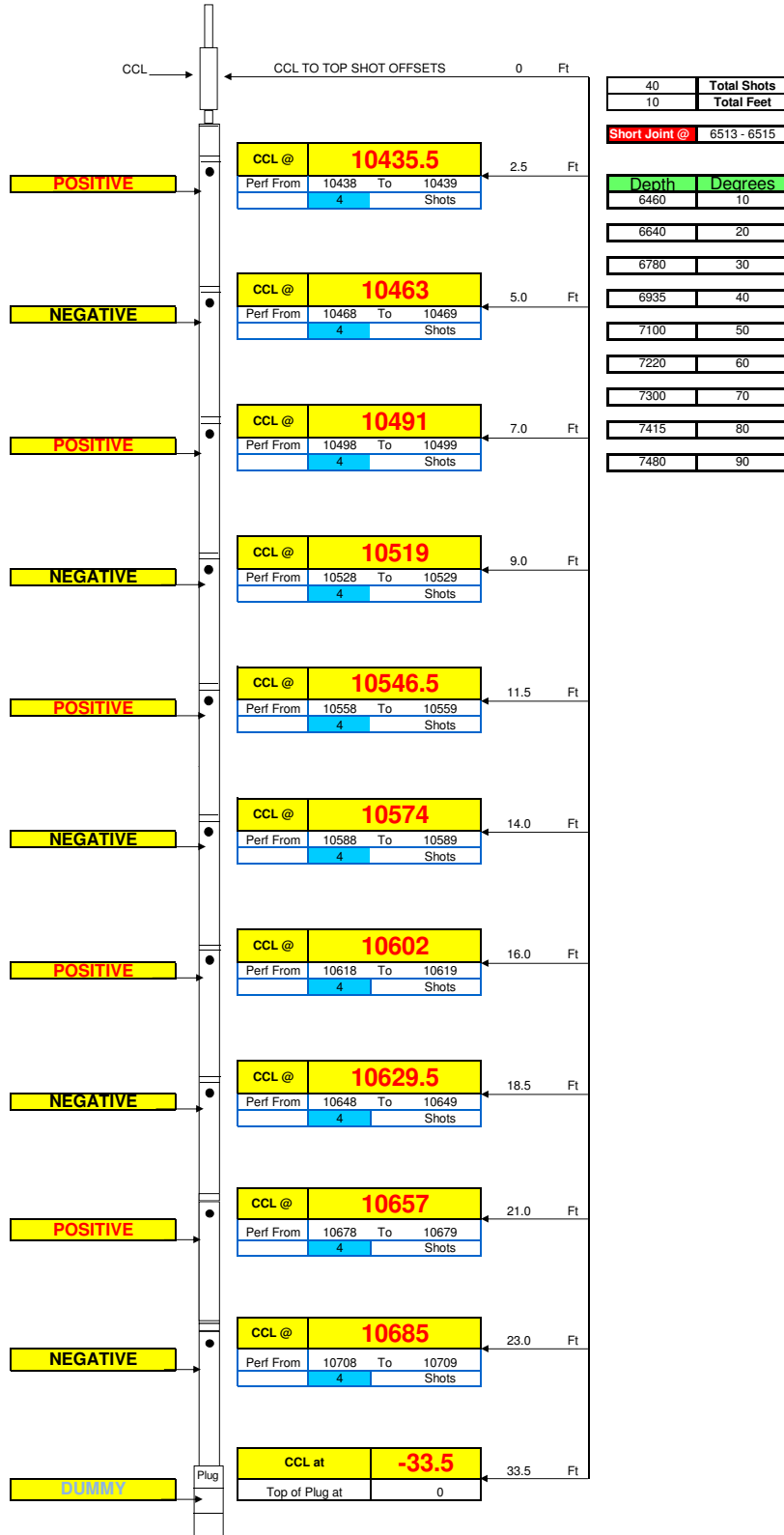




Perforation Schematic

Company	CHESAPEAKE ENERGY
Well Name	Brent 20-8-66 1H
Stage #	2
Run #	1
Supervisor	San Jahan
Date / Time	1/14/12 12:00 AM
Location	1
Weather	1
Wind Direc.	1

Cert. #	4459
Pattern	60
EHD	0.40"
Penetration	38.7"
Total Lbs	
Max lbs/delay	
Method of Fire	Elec
Distance / Structure	N/A
Seismograph	No



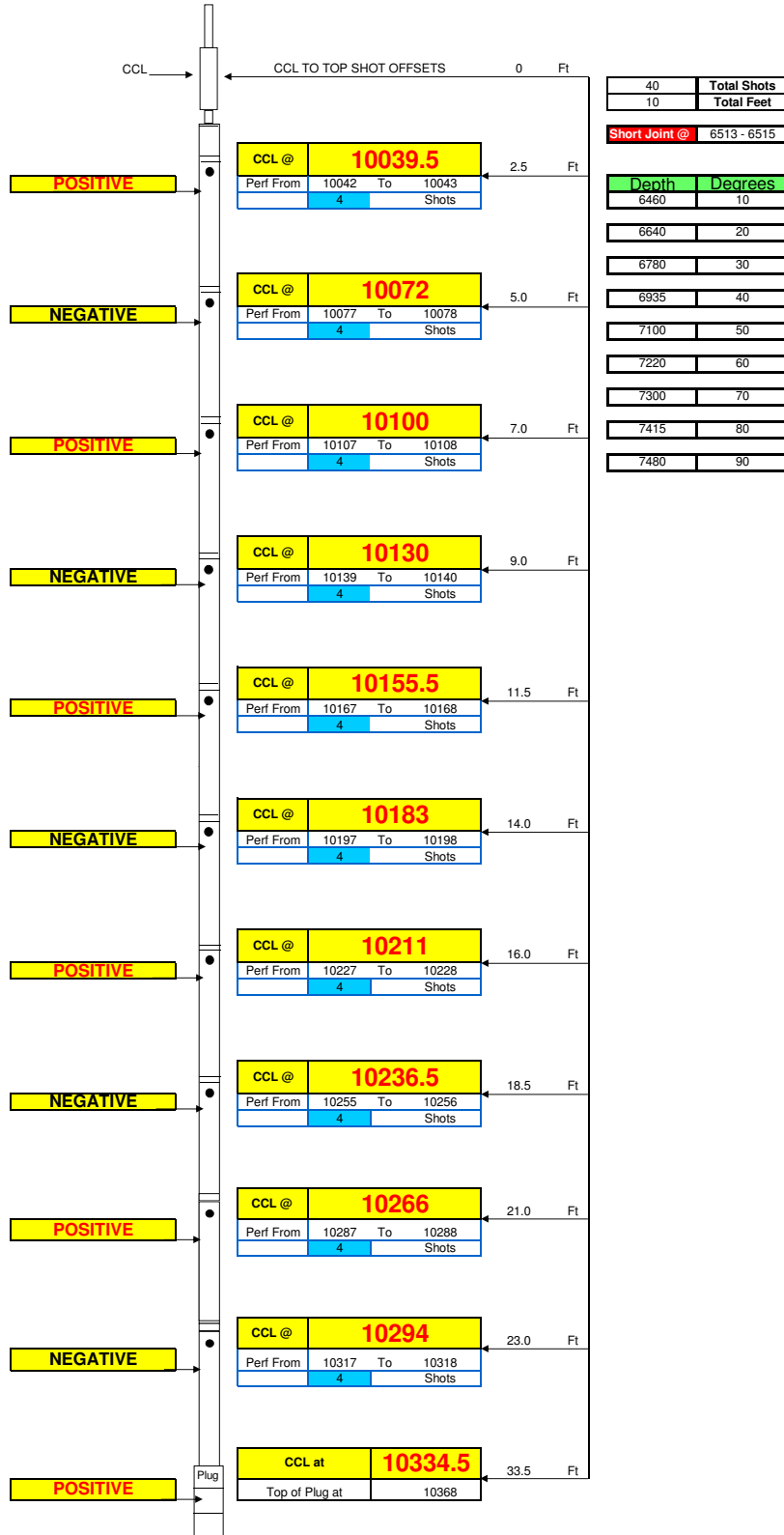
Top of bottom set of perforations at 10829



Perforation Schematic

Company	CHESAPEAKE ENERGY
Well Name	Brent 20-8-66 1H
Stage #	3
Run #	1
Supervisor	San Jahan
Date / Time	1/14/12 12:00 AM
Location	1
Weather	1
Wind Direc.	1

Cert. #	4459
Pattern	60
EHD	0.40"
Penetration	38.7"
Total Lbs	
Max lbs/delay	
Method of Fire	Elec
Distance / Structure	N/A
Seismograph	No



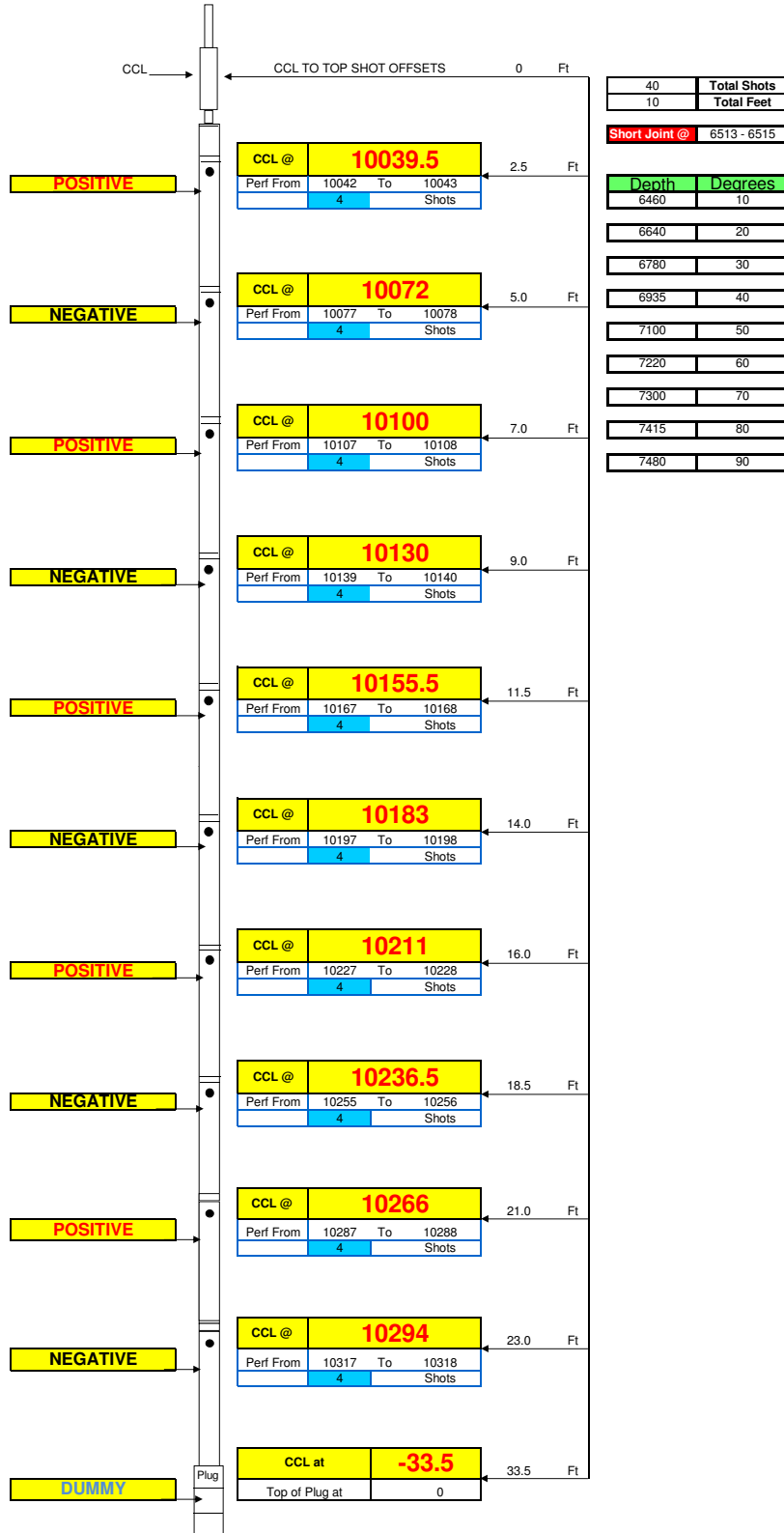
Top of bottom set of perforations at 10438



Perforation Schematic

Company	CHESAPEAKE ENERGY
Well Name	Brent 20-8-66 1H
Stage #	3
Run #	2
Supervisor	Sam Hobbs
Date / Time	1/14/12 12:00 AM
Location	1
Weather	1
Wind Direc.	1

Cert. #	4459
Pattern	60
EHD	0.40"
Penetration	38.7"
Total Lbs	
Max lbs/delay	
Method of Fire	Elec
Distance / Structure	N/A
Seismograph	No



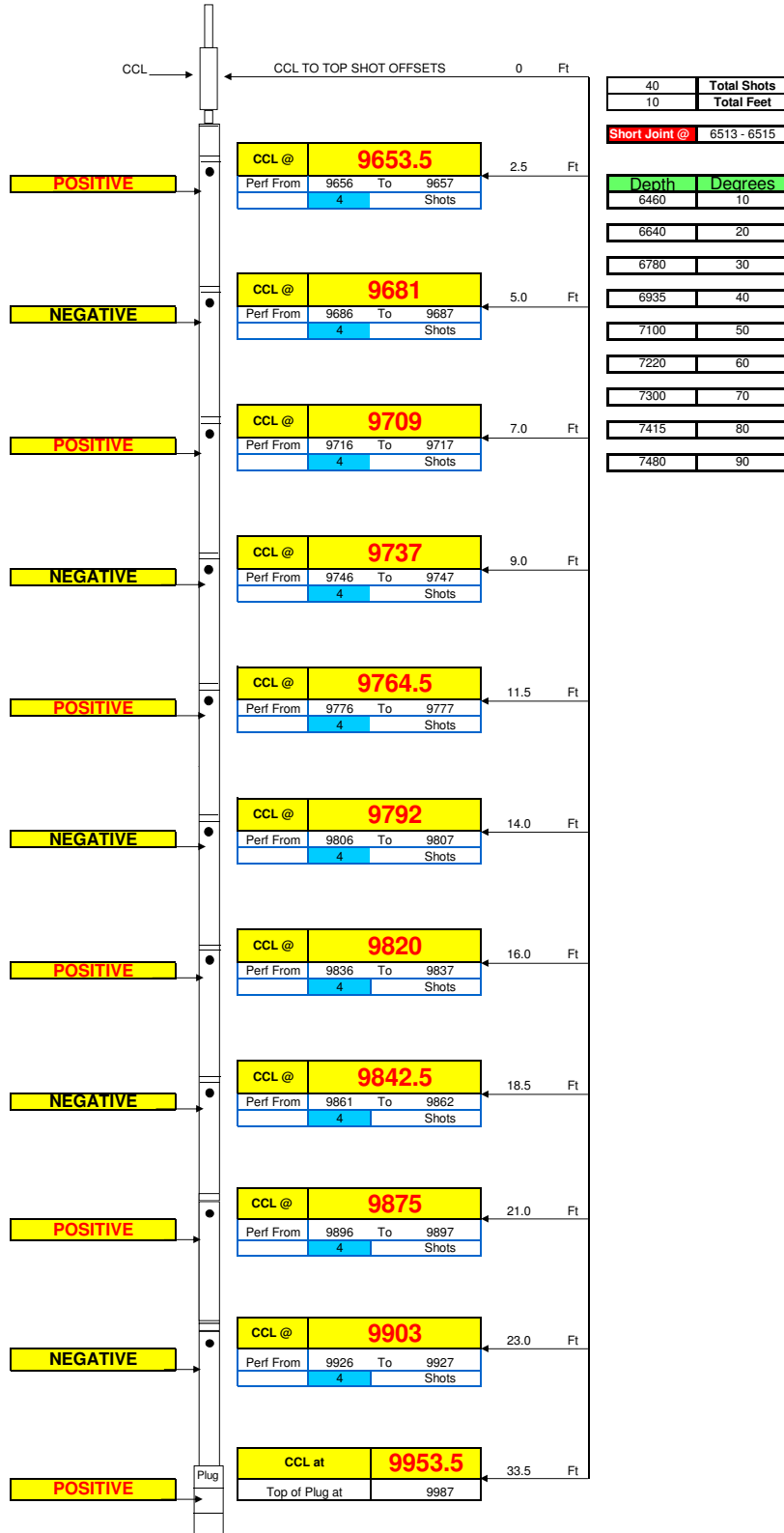
Top of bottom set of perforations at 10438



Perforation Schematic

Company	CHESAPEAKE ENERGY
Well Name	Brent 20-8-66 1H
Stage #	4
Run #	1
Supervisor	Sam Hobbs
Date / Time	1/14/12 12:00 AM
Location	1
Weather	1
Wind Direc.	1

Cert. #	4459
Pattern	60
EHD	0.40"
Penetration	38.7"
Total Lbs	
Max lbs/delay	
Method of Fire	Elec
Distance / Structure	N/A
Seismograph	No



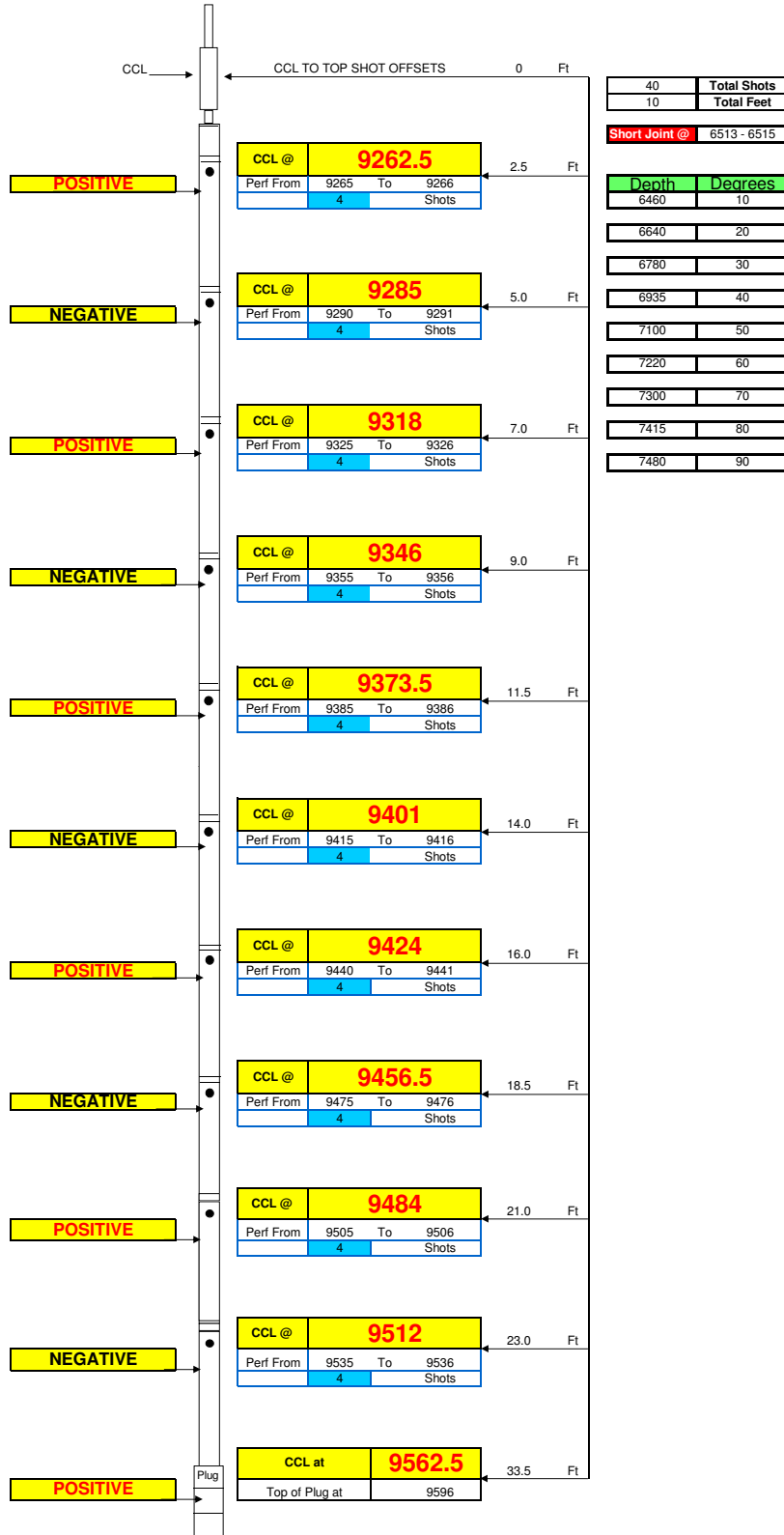
Top of bottom set of perforations at 10047



Perforation Schematic

Company	CHESAPEAKE ENERGY
Well Name	Brent 20-8-66 1H
Stage #	5
Run #	1
Supervisor	Sam Hobbs
Date / Time	1/14/12 12:00 AM
Location	1
Weather	1
Wind Direc.	1

Cert. #	4459
Pattern	60
EHD	0.40"
Penetration	38.7"
Total Lbs	
Max lbs/delay	
Method of Fire	Elec
Distance / Structure	N/A
Seismograph	No



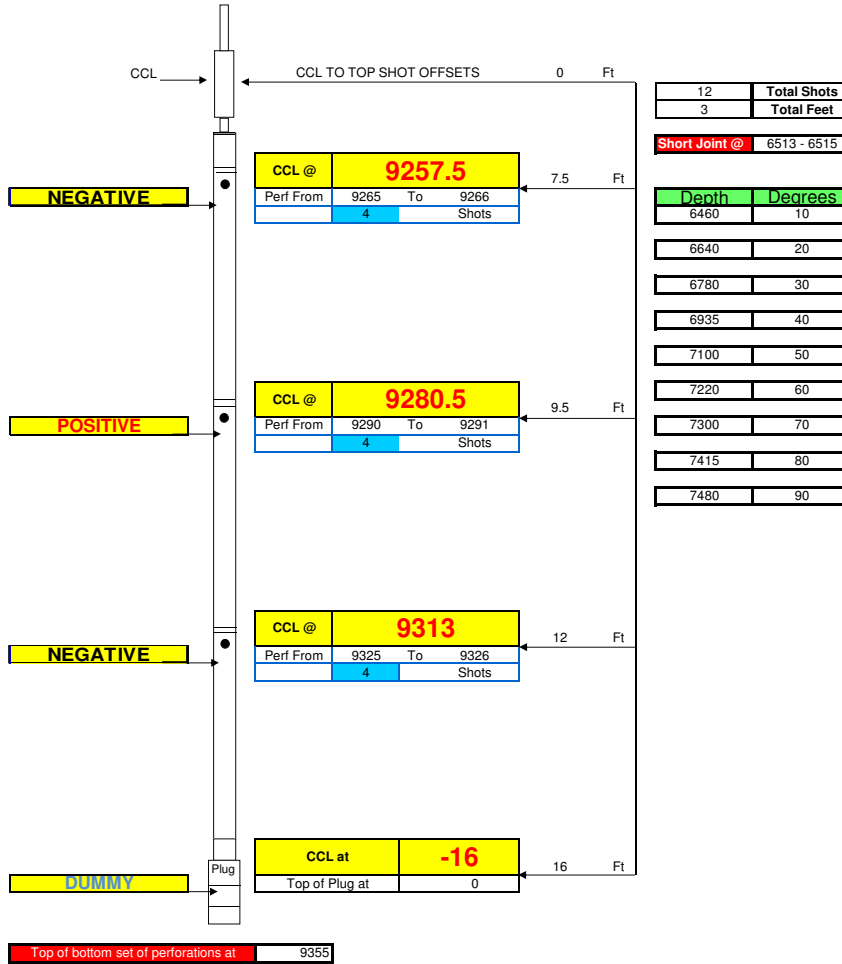
Top of bottom set of perforations at 9656



**Perforation Schematic**

Company	CHESAPEAKE ENERGY
Well Name	Brent 20-8-66 1H
Stage #	5
Run #	2
Supervisor	Sam Hobbs
Date / Time	1/15/12 6:00 AM
Location	1
Weather	1
Wind Direc.	1

Cert. #	4459
Pattern	60
EHD	0.40"
Penetration	38.7"
Total Lbs	
Max lbs/delay	
Method of Fire	Elec
Distance / Structure	N/A
Seismograph	No

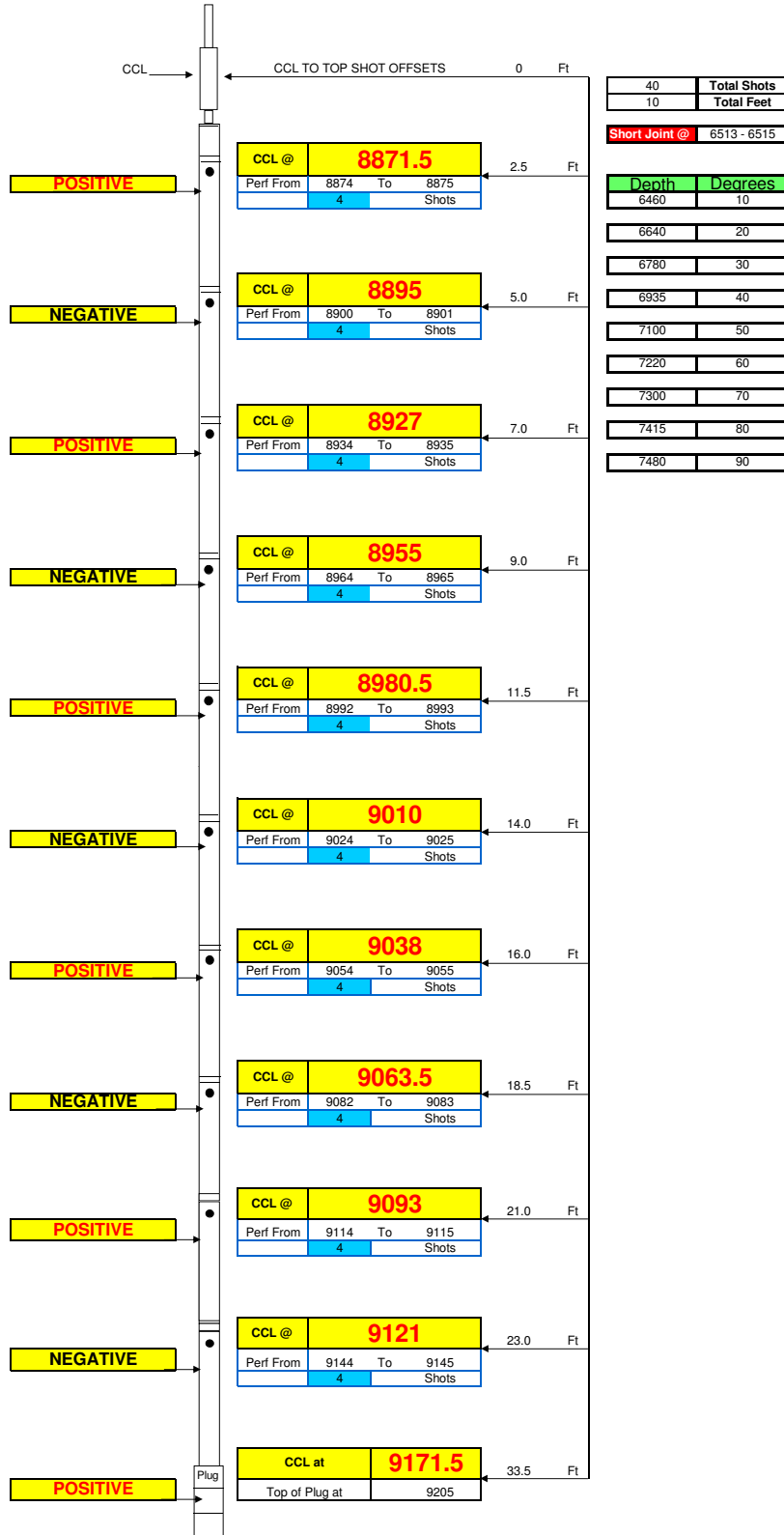




Perforation Schematic

Company	CHESAPEAKE ENERGY
Well Name	Brent 20-8-66 1H
Stage #	6
Run #	1
Supervisor	Sam Hobbs
Date / Time	1/15/12 12:00 AM
Location	1
Weather	1
Wind Direc.	1

Cert. #	4459
Pattern	60
EHD	0.40"
Penetration	38.7"
Total Lbs	
Max lbs/delay	
Method of Fire	Elec
Distance / Structure	N/A
Seismograph	No



40	Total Shots
10	Total Feet

Short Joint @ 6513 - 6515

Depth	Degrees
6480	10
6640	20
6780	30
6935	40
7100	50
7220	60
7300	70
7415	80
7480	90

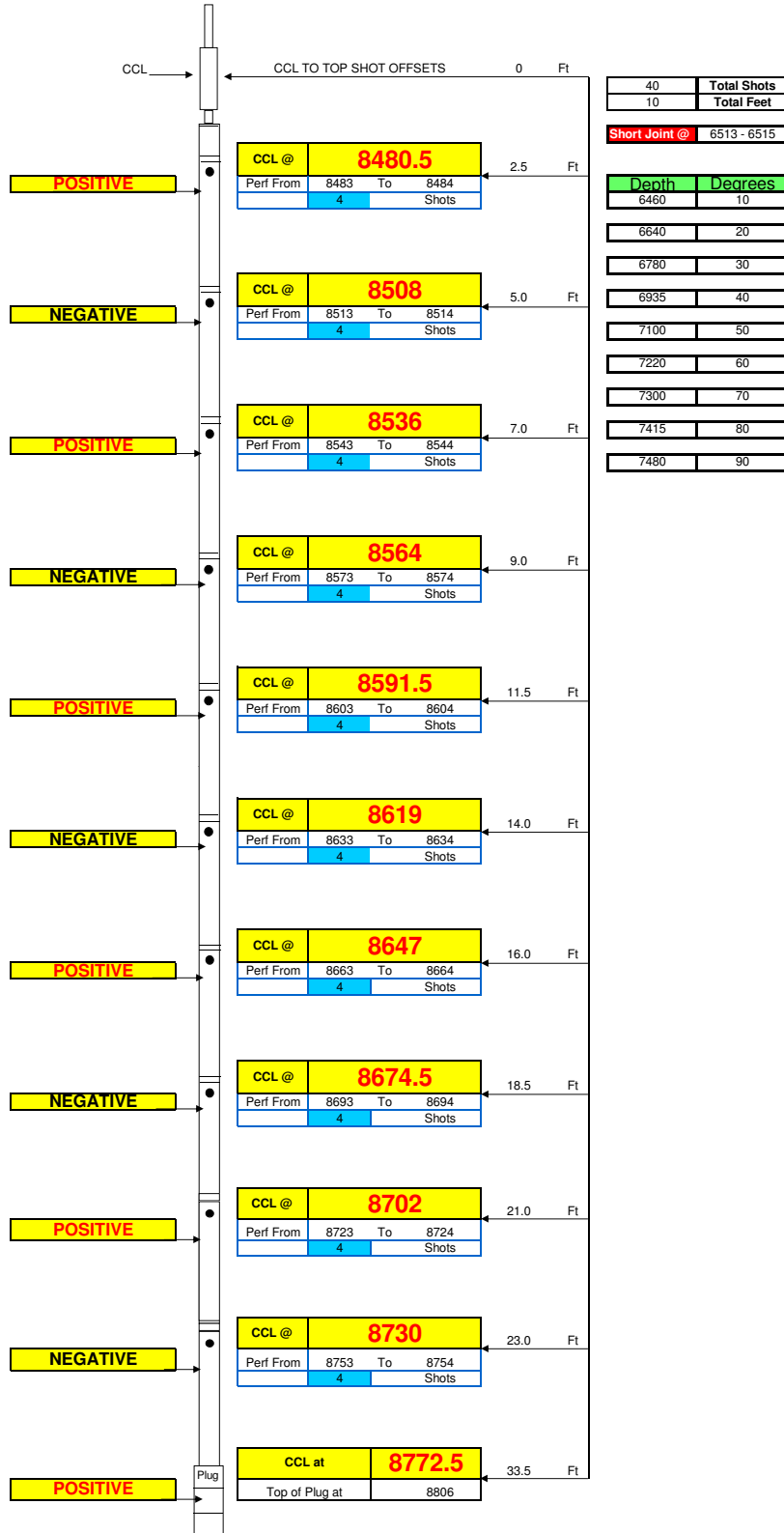
Top of bottom set of perforations at 9265



Perforation Schematic

Company	CHESAPEAKE ENERGY
Well Name	Brent 20-8-66 1H
Stage #	7
Run #	1
Supervisor	Sam Hobbs
Date / Time	1/15/12 12:00 AM
Location	1
Weather	1
Wind Direc.	1

Cert. #	4459
Pattern	60
EHD	0.40"
Penetration	38.7"
Total Lbs	
Max lbs/delay	
Method of Fire	Elec
Distance / Structure	N/A
Seismograph	No



40	Total Shots
10	Total Feet

Short Joint @ 6513 - 6515

Depth	Degrees
6480	10
6640	20
6780	30
6935	40
7100	50
7220	60
7300	70
7415	80
7480	90

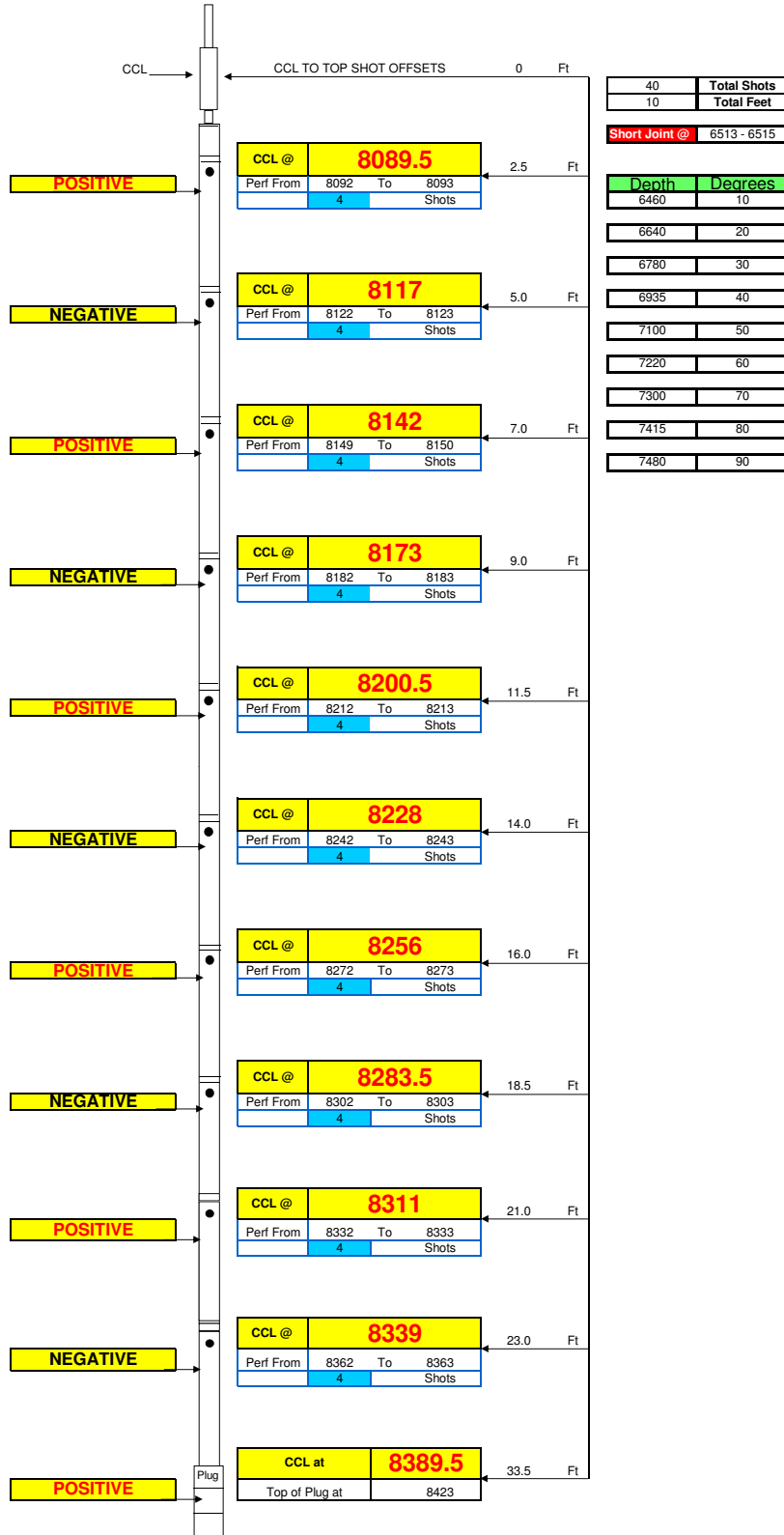
Top of bottom set of perforations at 8874



Perforation Schematic

Company	CHESAPEAKE ENERGY
Well Name	Brent 20-8-66 1H
Stage #	8
Run #	1
Supervisor	Sam Hobbs
Date / Time	1/15/12 12:00 AM
Location	1
Weather	1
Wind Direc.	1

Cert. #	4459
Pattern	60
EHD	0.40"
Penetration	38.7"
Total Lbs	
Max lbs/delay	
Method of Fire	Elec
Distance / Structure	N/A
Seismograph	No



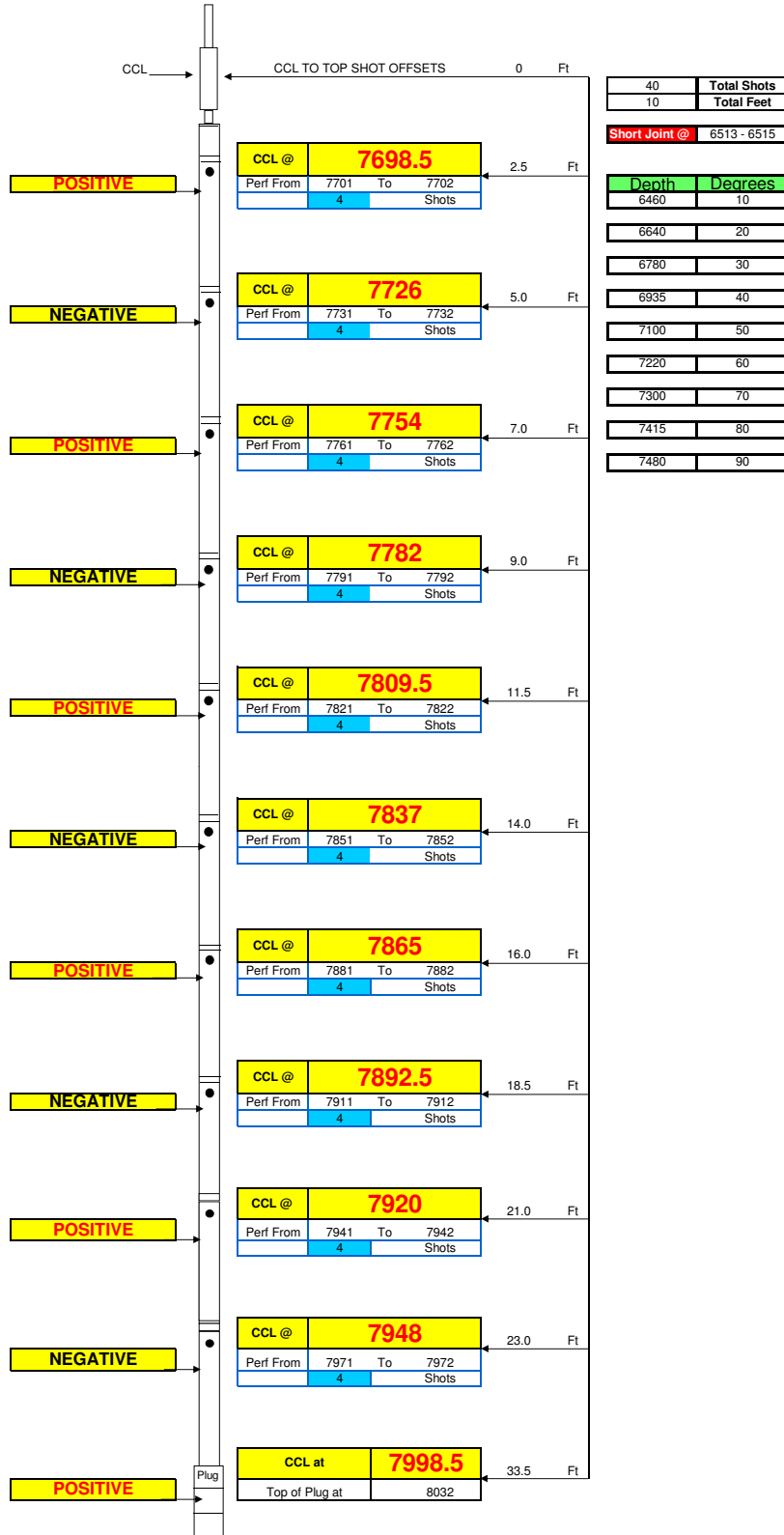
Top of bottom set of perforations at 8483



Perforation Schematic

Company	CHESAPEAKE ENERGY
Well Name	Brent 20-8-66 1H
Stage #	9
Run #	1
Supervisor	Sam Hobbs
Date / Time	1/15/12 12:00 AM
Location	1
Weather	1
Wind Direc.	1

Cert. #	4459
Pattern	60
EHD	0.40"
Penetration	38.7"
Total Lbs	
Max lbs/delay	
Method of Fire	Elec
Distance / Structure	N/A
Seismograph	No



40	Total Shots
10	Total Feet

Short Joint @ 6513 - 6515

Depth	Degrees
6480	10
6640	20
6780	30
6935	40
7100	50
7220	60
7300	70
7415	80
7480	90

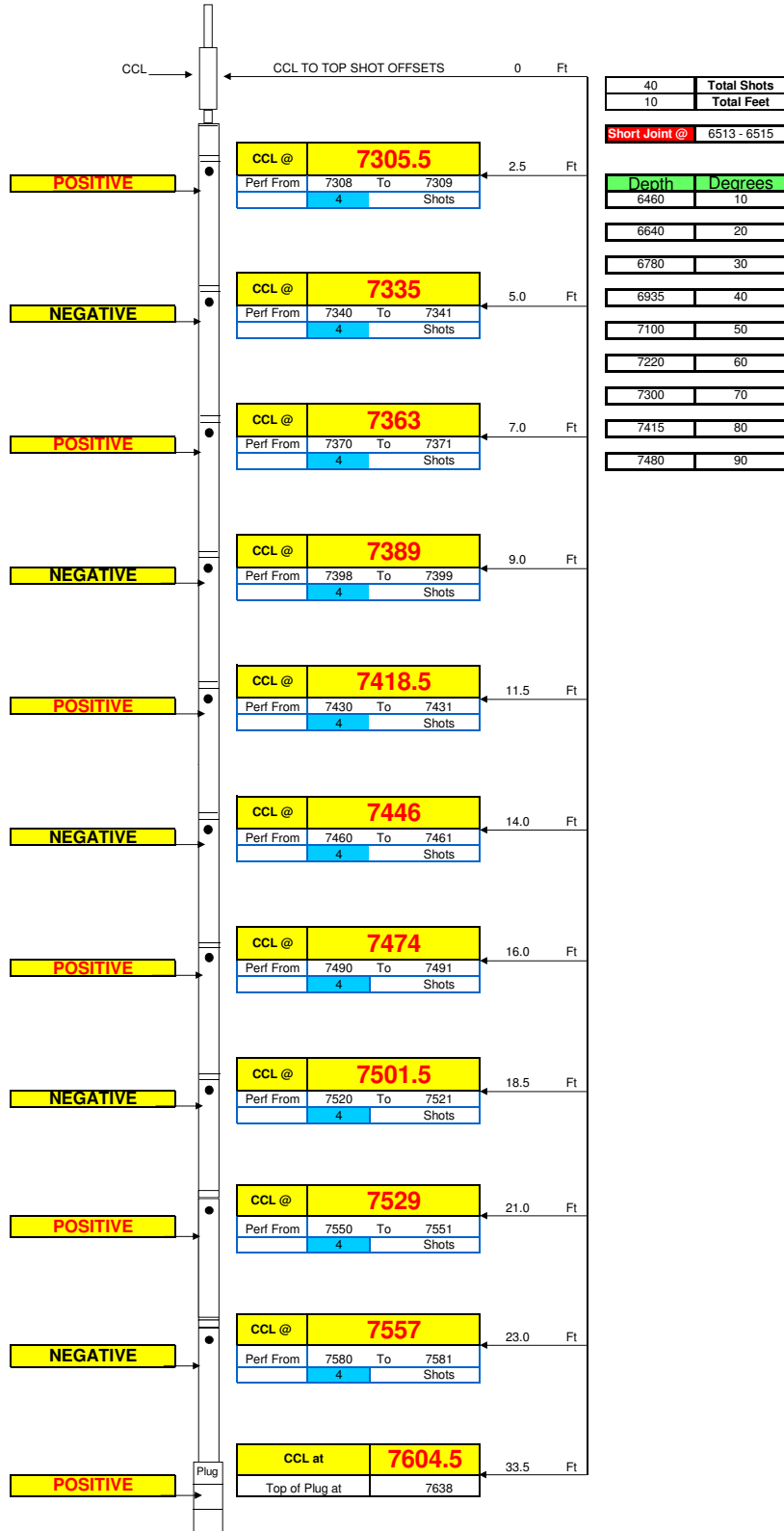
Top of bottom set of perforations at 8092



Perforation Schematic

Company	CHESAPEAKE ENERGY
Well Name	Brent 20-8-66 1H
Stage #	10
Run #	1
Supervisor	Sam Hobbs
Date / Time	1/15/12 12:00 AM
Location	1
Weather	1
Wind Direc.	1

Cert. #	4459
Pattern	60
EHD	0.40"
Penetration	38.7"
Total Lbs	
Max lbs/delay	
Method of Fire	Elec
Distance / Structure	N/A
Seismograph	No



40	Total Shots
10	Total Feet

Short Joint @ 6513 - 6515

Depth	Degrees
6480	10
6640	20
6780	30
6935	40
7100	50
7220	60
7300	70
7415	80
7480	90

Top of bottom set of perforations at 7701