
OXY GRAND JUNCTION EBUSINESS

**Cascade Creek 697-16-05
GRAND VALLEY
Garfield County , Colorado**

**Squeeze Perfs
08-Nov-2011**

Post Job Report

The Road to Excellence Starts with Safety

Sold To #: 344034	Ship To #: 2698452	Quote #:	Sales Order #: 9047940
Customer: OXY GRAND JUNCTION EBUSINESS		Customer Rep:	
Well Name: Cascade Creek		Well #: 697-16-05	API/UWI #: 05045160170000
Field: GRAND VALLEY	City (SAP): PARACHUTE	County/Parish: Garfield	State: Colorado
Legal Description: Section 9 Township 6S Range 97W			
Lat: N 39.531 deg. OR N 39 deg. 31 min. 51.956 secs.		Long: W 108.223 deg. OR W -109 deg. 46 min. 35.731 secs.	
Contractor: WORKOVER		Rig/Platform Name/Num: WORKOVER	
Job Purpose: Squeeze Perfs			
Well Type: Development Well		Job Type: Squeeze Perfs	
Sales Person: HIMES, JEFFREY		Srvc Supervisor: FUCHS, BENJAMIN	MBU ID Emp #: 470584

Job Personnel

HES Emp Name	Exp Hrs	Emp #	HES Emp Name	Exp Hrs	Emp #	HES Emp Name	Exp Hrs	Emp #
FUCHS, BENJAMIN Reinhard	7	470584	MILLER, KEVIN Paul	7	443040	VOORHIS, WALTER T	7	472268
WILKISON, KEVIN Diverne	7	491065						

Equipment

HES Unit #	Distance-1 way	HES Unit #	Distance-1 way	HES Unit #	Distance-1 way	HES Unit #	Distance-1 way

Job Hours

Date	On Location Hours	Operating Hours	Date	On Location Hours	Operating Hours	Date	On Location Hours	Operating Hours
11/8/2011	7	3						
TOTAL			<i>Total is the sum of each column separately</i>					

Job

Job Times

Formation Name	Top	Bottom	Called Out	Date	Time	Time Zone
Formation Depth (MD)			On Location	08 - Nov - 2011	00:00	MST
Form Type		BHST	Job Started	08 - Nov - 2011	10:30	MST
Job depth MD	7140. ft	Job Depth TVD	7140. ft	Job Completed	08 - Nov - 2011	12:00
Water Depth		Wk Ht Above Floor	3. ft	Departed Loc	08 - Nov - 2011	15:30
Perforation Depth (MD)	<i>From</i> 7,139.00 ft	<i>To</i>	7,140.00 ft		08 - Nov - 2011	17:30

Well Data

Description	New / Used	Max pressure psig	Size in	ID in	Weight lbm/ft	Thread	Grade	Top MD ft	Bottom MD ft	Top TVD ft	Bottom TVD ft
Perforation Interval								7139.	7140.	.	.
4 1/2" Production Casing	Unknown		4.5	4.	11.6		N-80	.	7350.		
2 3/8" Tubing	Unknown		2.375	1.995	4.7		L-80	.	7350.		

Tools and Accessories

Type	Size	Qty	Make	Depth	Type	Size	Qty	Make	Depth	Type	Size	Qty	Make
Guide Shoe					Packer					Top Plug			
Float Shoe					Bridge Plug					Bottom Plug			
Float Collar					Retainer					SSR plug set			
Insert Float										Plug Container			
Stage Tool										Centralizers			

Miscellaneous Materials

Gelling Agt	Conc	Surfactant	Conc	Acid Type	Qty	Conc %
Treatment Fld	Conc	Inhibitor	Conc	Sand Type	Size	Qty

Fluid Data

Stage/Plug #: 1

Fluid #	Stage Type	Fluid Name	Qty	Qty uom	Mixing Density lbm/gal	Yield ft ³ /sk	Mix Fluid Gal/sk	Rate bbl/min	Total Mix Fluid Gal/sk
1	Fresh Water		15.00	bbl	8.33	.0	.0	5.0	
2	Squeeze Cement	SQUEEZECEM (TM) SYSTEM (452971)	220.0	sacks	15.8	1.52	6.16	5.0	6.16
	6.16 Gal	FRESH WATER							
3	Fresh Water		27.00	bbl	8.33			5.0	
Calculated Values		Pressures		Volumes					
Displacement		Shut In: Instant		Lost Returns		Cement Slurry		Pad	
Top Of Cement		5 Min		Cement Returns		Actual Displacement		Treatment	
Frac Gradient		15 Min		Spacers		Load and Breakdown		Total Job	
Rates									
Circulating		Mixing		Displacement		Avg. Job			
Cement Left In Pipe	Amount	0 ft	Reason	Shoe Joint					
Frac Ring # 1 @	ID	Frac ring # 2 @	ID	Frac Ring # 3 @	ID	Frac Ring # 4 @	ID		
The Information Stated Herein Is Correct				Customer Representative Signature					

The Road to Excellence Starts with Safety

Sold To #: 344034	Ship To #: 2698452	Quote #:	Sales Order #: 9047940
Customer: OXY GRAND JUNCTION EBUSINESS		Customer Rep:	
Well Name: Cascade Creek		Well #: 697-16-05	API/UWI #: 05045160170000
Field: GRAND VALLEY	City (SAP): PARACHUTE	County/Parish: Garfield	State: Colorado
Legal Description: Section 9 Township 6S Range 97W			
Lat: N 39.531 deg. OR N 39 deg. 31 min. 51.956 secs.		Long: W 108.223 deg. OR W -109 deg. 46 min. 35.731 secs.	
Contractor: WORKOVER		Rig/Platform Name/Num: WORKOVER	
Job Purpose: Squeeze Perfs			Ticket Amount:
Well Type: Development Well		Job Type: Squeeze Perfs	
Sales Person: HIMES, JEFFREY		Srvc Supervisor: FUCHS, BENJAMIN	MBU ID Emp #: 470584

Activity Description	Date/Time	Cht #	Rate bbl/min	Volume bbl		Pressure psig		Comments
				Stage	Total	Tubing	Casing	
Call Out	11/08/2011 00:00							Crew called out for job
Safety Meeting - Departing Location	11/08/2011 00:45							Discuss all travel related safety issues with crew
Crew Leave Yard	11/08/2011 01:00							Convoy to Grand Junction yard for safety
Crew Return Yard	11/08/2011 05:00							Arrive at Grand Junction yard and get equipment needed for job
Safety Meeting - Departing Location	11/08/2011 06:45							Discuss all travel related safety issues with crew
Crew Leave Yard	11/08/2011 07:00							Convoy to location for safety
Arrive at Location from Service Center	11/08/2011 10:30							Rig crew ready for us upon arrival
Safety Meeting - Assessment of Location	11/08/2011 10:45							Identify and discuss all location hazards and safety issues with crew
Other	11/08/2011 11:00							Spott equipment using spotter(s)
Safety Meeting - Pre Rig-Up	11/08/2011 11:15							Discuss all rig up related safety issues with crew
Rig-Up Equipment	11/08/2011 11:30							Be careful, no one gets hurt
Safety Meeting - Pre Job	11/08/2011 11:45							Discusses all job related safety issues and pump schedule with crew and rig crew
Start Job	11/08/2011 12:08	1						Everyone prepare equipment
Pump Water	11/08/2011 12:08	2	2	3	3		25.0	Fill lines with 3 bbls water for pressure test
Pressure Test	11/08/2011 12:11	3					5000.0	Test lines to 5000 psi, establish good test
Activity Description	Date/Time	Cht	Rate bbl/min	Volume bbl		Pressure psig		Comments

Sold To # : 344034

Ship To # : 2698452

Quote # :

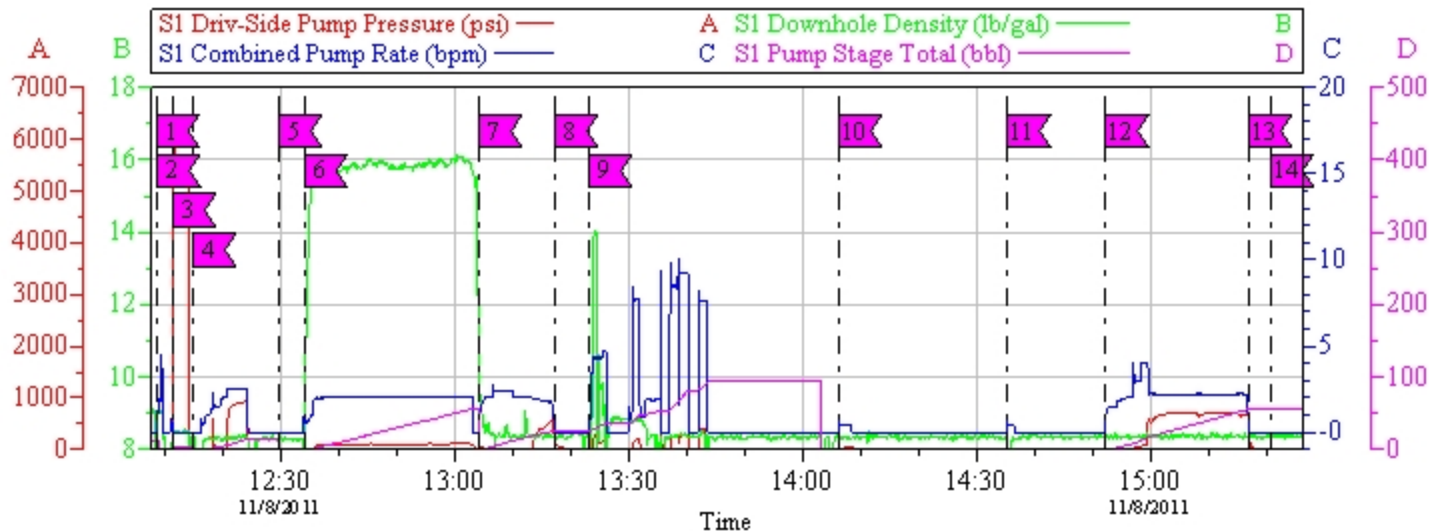
Sales Order # : 9047940

		#		Stage	Total	Tubing	Casing	
Injection Test	11/08/2011 12:14	4	2.5	10	13		480.0	Establish injection rate pump .5 bbl/min 2 psi, 1 bbl/min 2 psi, 1.5 bbls/min 12 psi, 2 bbls/min 18 psi, 2.5 bbls/min 480 psi
Pump Water	11/08/2011 12:29	5	2.5	5	18		500.0	Finish pumping 15 bbls water spacer per customer job design
Pump Cement	11/08/2011 12:34	6	2	59	77		52.0	Pump 59 bbls squeeze cem cement mixed @ 15.8 ppg 1.52 yield 6.16 water requirement
Pump Displacement	11/08/2011 13:04	7	2	27	181		64.0	Pump 27 bbls water displacement
Shutdown	11/08/2011 13:17	8					567.0	Primary job complete wait 1 hour for first hesitation
Clean Lines	11/08/2011 13:23	9						Wash pumps and lines to pit
Pump Displacement	11/08/2011 14:06	10	0.5	1	182		67.0	Pump 1st hesitation and record psi
Pump Displacement	11/08/2011 14:35	11	0.5	0.5	182.5		57.0	Pump 2nd hesitation and record psi
Reverse Circ Well	11/08/2011 14:52	12	3	54	236.5		700.0	Sting out of retainer and pump 54 bbls (2x tubing capacity)
Shutdown	11/08/2011 15:16	13						Pumping complete
End Job	11/08/2011 15:20	14						Bleed all pressure off lines
Safety Meeting - Pre Rig-Down	11/08/2011 15:30							Discuss all rig down related safety issues with crew
Rig-Down Equipment	11/08/2011 15:45							Be careful, no one gets hurt
Safety Meeting - Departing Location	11/08/2011 17:15							Discuss all travel related safety issues with crew
Crew Leave Location	11/08/2011 17:30							Convoy to yard for safety

OXY MWS 19 Grand Valley 697-16-05

Re-Cement

11-8-2011



1	START JOB	12:08:31	2	FILL LINES	12:08:41
3	PRESSURE TEST	12:11:20	4	INJECTION TEST	12:14:53
5	WEIGH UP TUB	12:29:41	6	PUMP CEMENT	12:34:02
7	PUMP DISPLACEMENT	13:04:13	8	SHUTDOWN	13:17:14
9	WASH LINES	13:23:09	10	PUMP 1ST HESITATION	14:06:15
11	PUMP 2ND HESITATION	14:35:18	12	CLEAR TUBING	14:52:14
13	SHUTDOWN	15:16:55	14	END JOB	15:20:39

Supervisor B. Fuchs

Operator W. Voorhis

Service Leader K. Miller

OptiCam v6.4.10
08-Nov-11 15:36

OXY MWS 19 Grand Valley 697-16-05

Re-Cement

11-8-2011

