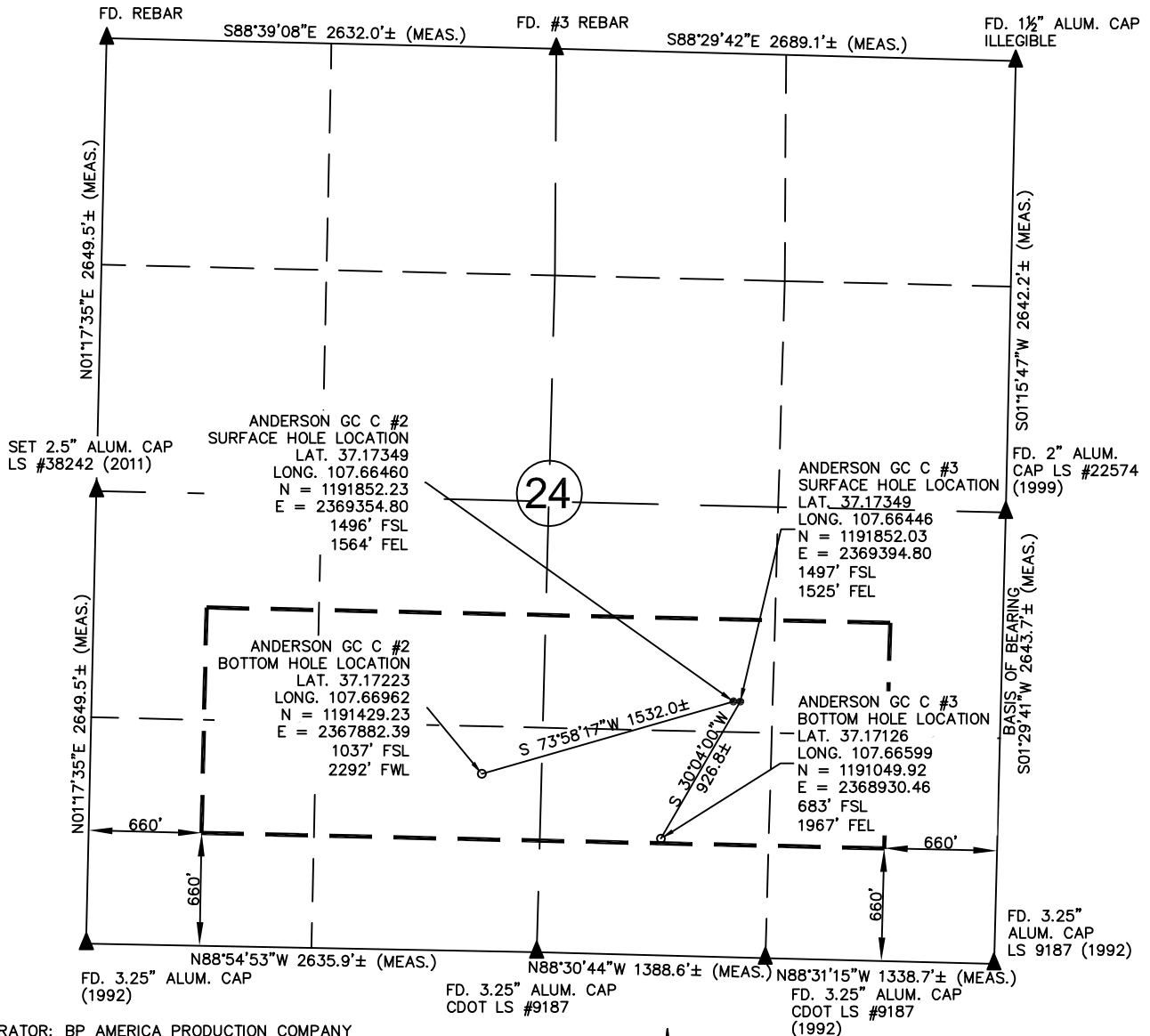


Drawing: ANDERSON_GCC23-MULTIWELL.DWG Plotted by: DALLAS_KNOLL Date: 12/21/2011 11:01:42 AM R:\Project Files\BP\BP 80 Acre Infill\Anderson Gas Com C #2 #3\Permitting Drawings\



OPERATOR: BP AMERICA PRODUCTION COMPANY
 LEASE: ANDERSON GAS COM C #2 #3
 SECTION 24 TOWNSHIP 34 NORTH RANGE 8 WEST N.M.P.M.
 COUNTY: LA PLATA COUNTY, COLORADO

ANDERSON GC C #2 1496.0 FEET FROM THE SOUTH LINE, AND 1564.2 FEET FROM THE EAST LINE
 BOTTOM HOLE LOCATION: 1037.3 FEET FROM THE SOUTH LINE, AND 2291.8 FEET FROM THE WEST LINE
 GROUND LEVEL ELEVATION: 6670.6'
 ANDERSON GC C #3 1496.8 FEET FROM THE SOUTH LINE, AND 1524.7 FEET FROM THE EAST LINE
 BOTTOM HOLE LOCATION: 882.9 FEET FROM THE SOUTH LINE, AND 1967.4 FEET FROM THE EAST LINE
 GROUND LEVEL ELEVATION: 6670.6'

LEGEND:
 ● = PROPOSED WELL HEAD
 ○ = BOTTOM HOLE LOCATION
 ▲ = SECTION CORNERS LOCATED
 △ = SECTION CORNERS NOT FOUND OR SET THIS SURVEY (CALCULATED LOCATION).
 S.U.I.T. = SOUTHERN UTE INDIAN TRIBE
 BLM = BUREAU OF LAND MANAGEMENT

NOTES:
 1) BASIS OF BEARING: SPC, C-SO, NAD83 ALONG EAST LINE OF THE SE1/4 OF SAID SECTION 24. BEARS: S01° 29' 41"W. E 1/4 CORNER BEING A 2" AC LS22547 AND SE CORNER BEING A 3.25" AC LS9187
 2) DATE FIELD SURVEY: 5/16/2011.
 3) ELEVATION DETERMINED FROM NAVD 1988 DATUM, AND DETERMINED USING GPS OBSERVATIONS.
 4) INSTRUMENT OPERATOR: BILL MITCHELL.
 5) PDOP VALUE: 1.5.
 6) ALL DIMENSIONS SHOWN HEREON ARE AT SPC, CO-S, NAD 83, GRID.

PROJ. NO 49228572	FILE NO. ANDERSONGCC23-MULTIWELL	ANDERSON GAS COM C #2 #3 MULTI - WELL PLAN		REV A
DRAWN BY DK	DATE 12/19/11	CLIENT DK	BP AMERICA PROD. CO. - DURANGO, CO	