

N 01°29'54" W, 89.3'± TO
EXISTING OHP LINES

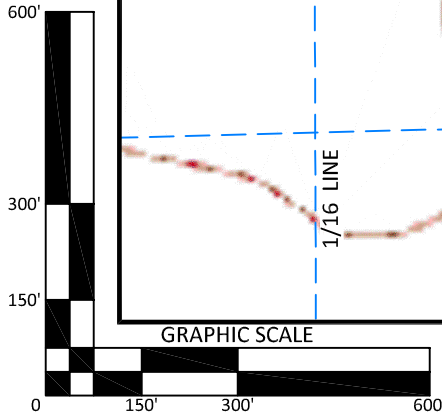
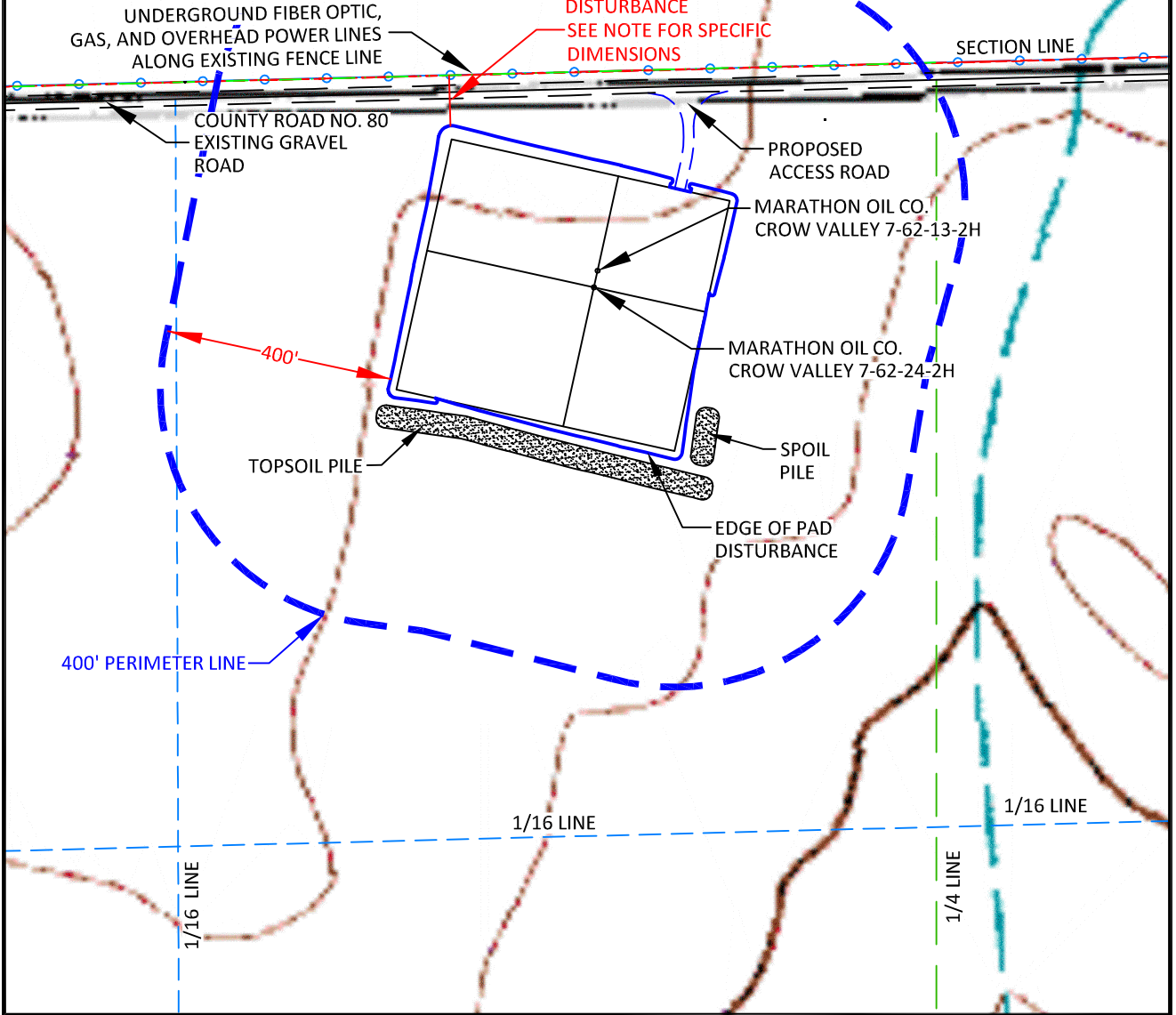
N 01°29'46" W 89.2'± TO
UNDERGROUND GAS LINES

N 01°25'18" W 88.6'± TO
UNDERGROUND FIBER LINE

N 01°24'40" W 89.5'±
TO EXISTING FENCE

N 01°10'13" W 48.2'± TO
EXISTING GRAVEL ROAD

EXISTING FENCE, COUNTY ROAD,
EXISTING OHP, GAS LINE, AND
FIBER OPTIC LINE WITHIN 400' OF
DISTURBANCE
SEE NOTE FOR SPECIFIC
DIMENSIONS



CONFIDENTIALITY NOTES:
The information contained in this plat is legally privileged and confidential information intended only for the use of the recipients. If you are not the intended recipients, you are hereby notified that any use, dissemination, distribution or copying of this information is strictly prohibited.



**WILLIAM H. SMITH
& ASSOCIATES P.C.**
SURVEYING CONSULTANTS
550 EAST SECOND NORTH PHONE: 307-875-3638
GREEN RIVER, WY 307-875-3639
www.whsmithpc.com

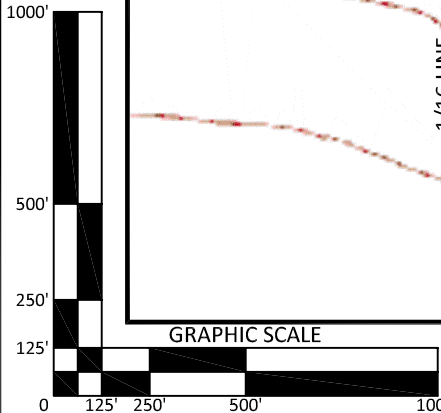
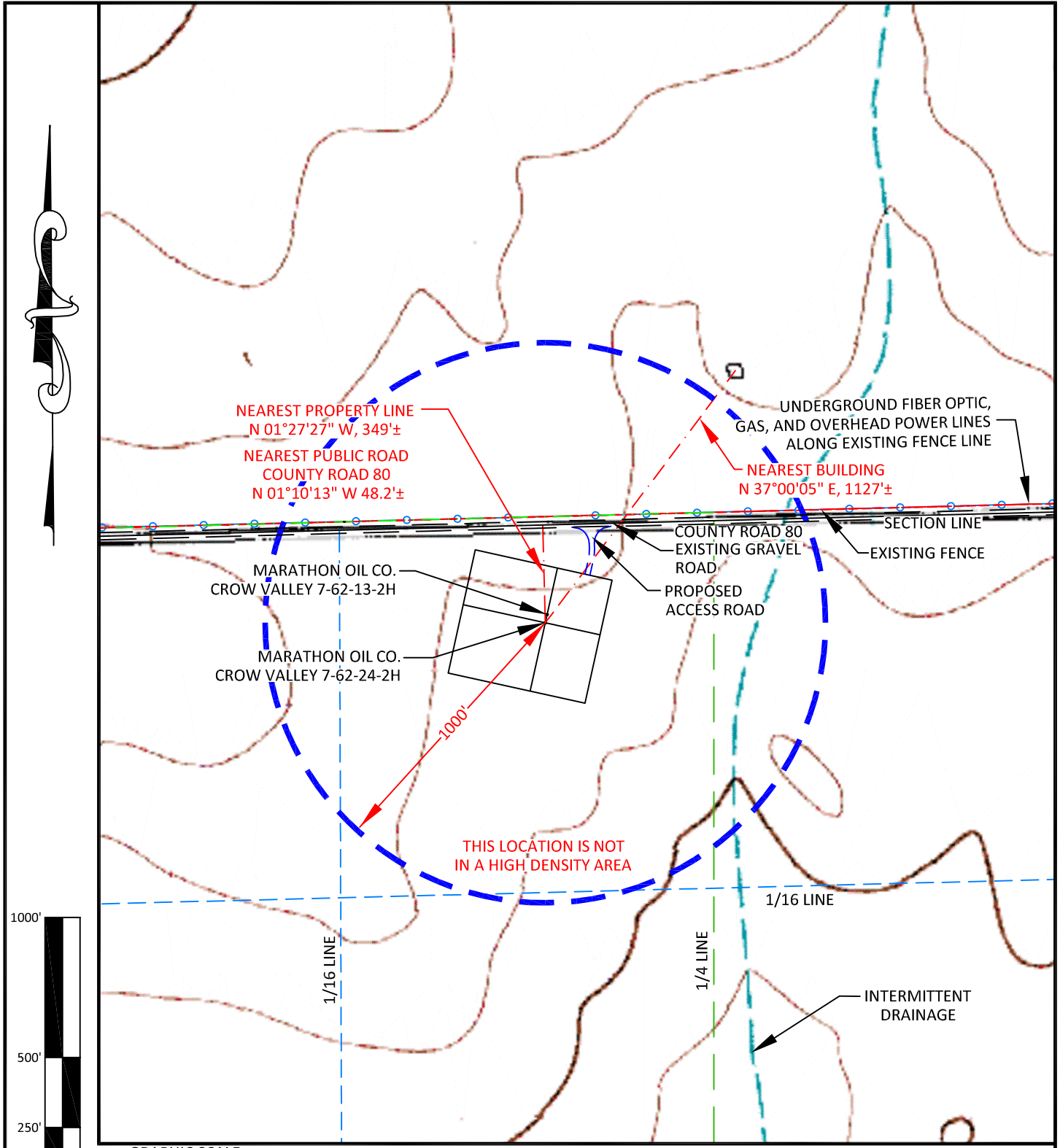
LEGEND	
400' PERIMETER	
PROPOSED ACCESS	
EXISTING FENCE	
EXISTING OHP	
SECTION LINE	
1/16 LINE	
1/4 LINE	

LOCATION:
CROW VALLEY
7-62-24-2H &
7-62-13-2H
WITHIN THE NE1/4
NW1/4 SECTION 24,
T 7 N, R 62 W,
6TH PM.
WELD COUNTY,
COLORADO








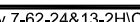
MARATHON OIL COMPANY
PO BOX 3128, HOUSTON TX, 77253
5555 SAN FELIPE, HOUSTON TX, 77056

DRAWN BY: LAL	CHECKED BY: RAW
PROJECT NO: 762242H	JOB NO: 2011001
REVISIONS:	

LOCATION DRAWING	
SCALE: 1"=300'	EXHIBIT "C"
DATE: 1/09/2012	SHEET 2 of 15



CONFIDENTIALITY NOTES:
 The information contained in this plat is legally privileged and confidential information intended only for the use of the recipients. If you are not the intended recipients, you are hereby notified that any use, dissemination, distribution or copying of this information is strictly prohibited.

 <p>WILLIAM H. SMITH & ASSOCIATES P.C. SURVEYING CONSULTANTS 550 EAST SECOND NORTH PHONE: 307-875-3638 GREEN RIVER, WY 307-875-3639 www.whsmithpc.com</p>	<p>LEGEND</p> <p>1000' RADIUS </p> <p>PROPOSED ACCESS </p> <p>FENCE </p> <p>1/16 LINE </p> <p>1/4 LINE </p> <p>SECTION LINE </p> <p>EXISTING OHP </p>		<p>LOCATION: CROW VALLEY 7-62-24-2H & 7-62-13-2H WITHIN THE NE1/4 NW1/4 SECTION 24, T 7 N, R 62 W, 6TH PM. WELD COUNTY, COLORADO</p>	<p>MARATHON OIL COMPANY PO BOX 3128, HOUSTON TX, 77253 5555 SAN FELIPE, HOUSTON TX, 77056</p>
	<p>DRAWN BY: LAL CHECKED BY: RAW PROJECT NO: 762242H JOB NO: 2011001 REVISIONS:</p>	<p>CULTURE MAP</p> <p>SCALE: 1"=500' EXHIBIT "H" DATE: 1/09/2012 SHEET 7 of 15</p>		