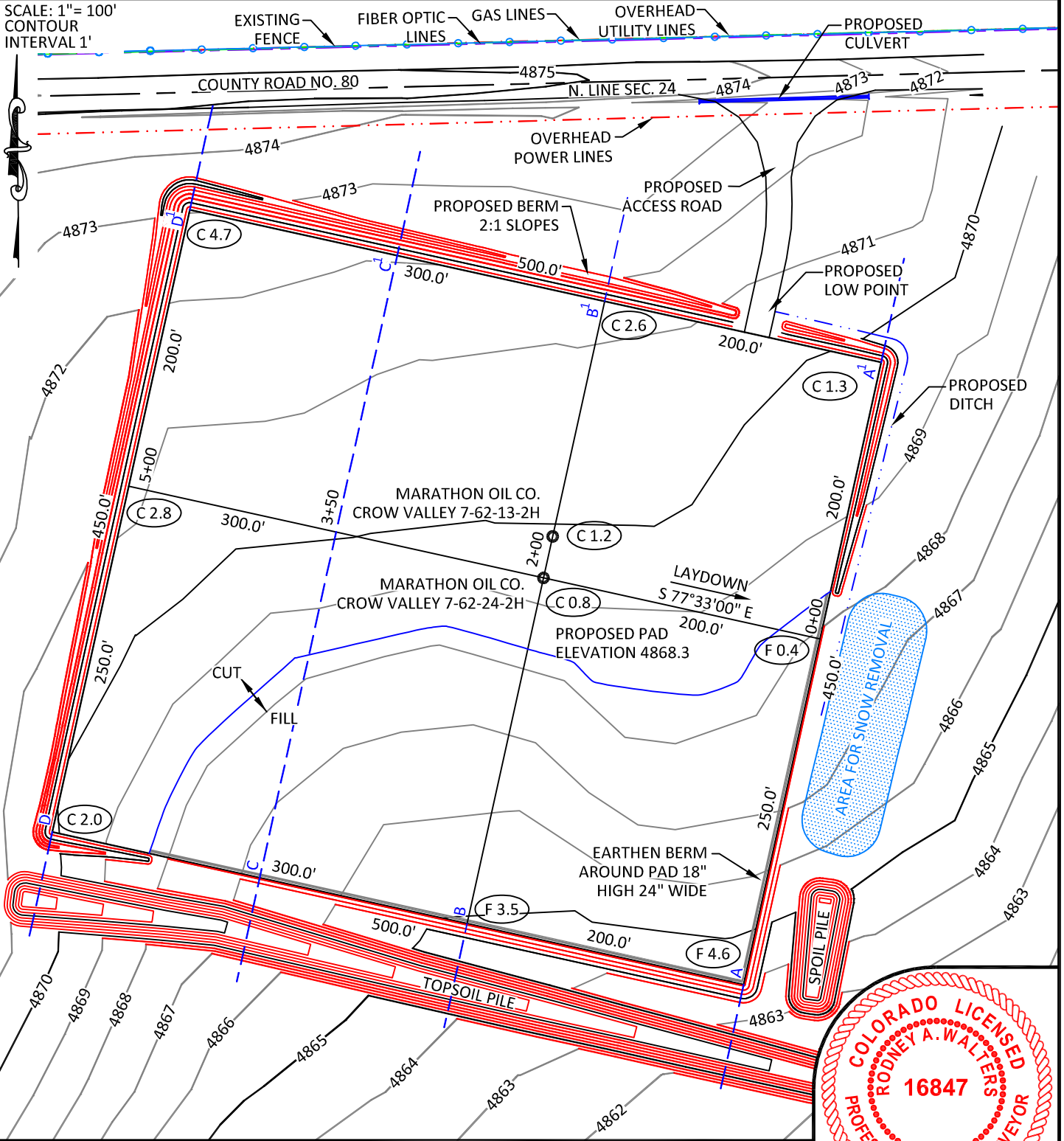


SCALE: 1" = 100'  
CONTOUR  
INTERVAL 1'



**NOTES:**

- Elevation of pad shown on plans are to constructed pad without final gravel padding placement. Depth, volume, and padding material to be determined by operator.
- The information contained in this plat is legally privileged and confidential information intended only for the use of the recipients. If you are not the intended recipients, you are hereby notified that any use, dissemination, distribution or copying of this information is strictly prohibited.

**WILLIAM H. SMITH & ASSOCIATES P.C.**  
SURVEYING CONSULTANTS  
550 EAST SECOND NORTH GREEN RIVER, WY  
PHONE: 307-875-3638  
307-875-3639  
www.whsmithpc.com

CONSTRUCTION DATA	
CUT SLOPE:	3:1
FILL SLOPE:	3:1
TOTAL CUT:	12,407 CU. YDS.
TOTAL FILL:	7,502 CU. YDS.
TOP SOIL AT 6"	4,643 CU. YDS.
SPOIL:	262 CU. YDS.
DISTURBED AREA	250,710 SQ. FT.
DISTURBED AREA	5.76 ACRES

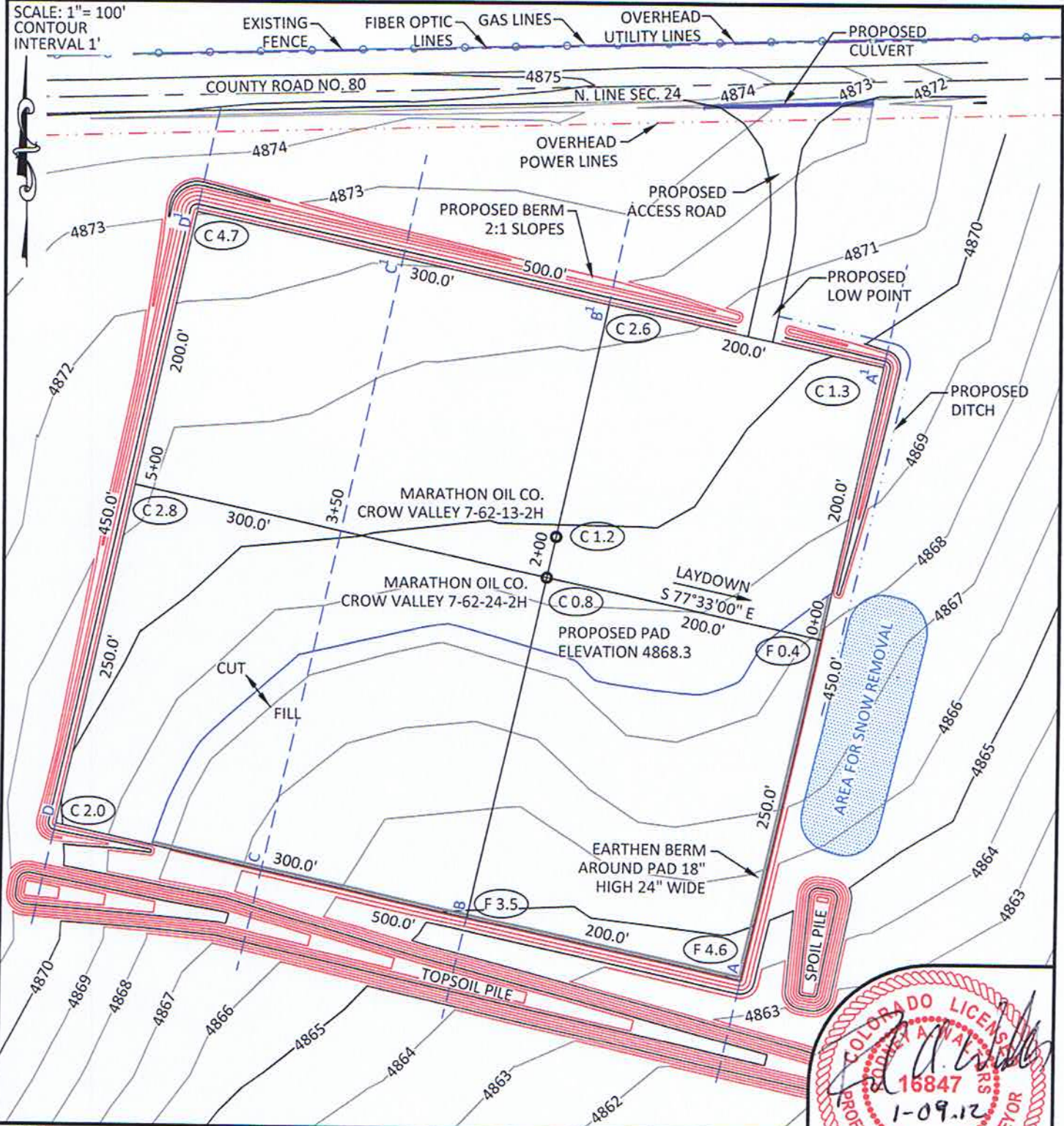
**LOCATION:**  
CROW VALLEY  
7-62-24-2H  
WITHIN THE NE/4  
NW/4 SECTION 24,  
T 7 N, R 62 W,  
6TH PM.  
WELD COUNTY,  
COLORADO

**MARATHON OIL COMPANY**  
PO BOX 3128, HOUSTON TX, 77253  
5555 SAN FELIPE, HOUSTON TX, 77056

**CONSTRUCTION LAYOUT**

349' FNL	2069' FWL
SCALE: 1"=100'	EXHIBIT "I"
DATE: 1/04/12	SHEET 8 OF 15

SCALE: 1" = 100'  
CONTOUR  
INTERVAL 1'



**NOTES:**

- Elevation of pad shown on plans are to constructed pad without final gravel padding placement. Depth, volume, and padding material to be determined by operator.
- The information contained in this plat is legally privileged and confidential information intended only for the use of the recipients. If you are not the intended recipients, you are hereby notified that any use, dissemination, distribution or copying of this information is strictly prohibited.



**WILLIAM H. SMITH & ASSOCIATES P.C.**  
SURVEYING CONSULTANTS  
550 EAST SECOND NORTH PHONE: 307-875-3638  
GREEN RIVER, WY 307-875-3639  
www.whsmithpc.com

CONSTRUCTION DATA	
CUT SLOPE:	3:1
FILL SLOPE:	3:1
TOTAL CUT:	12,407 CU. YDS.
TOTAL FILL:	7,502 CU. YDS.
TOP SOIL AT 6"	4,643 CU. YDS.
SPOIL:	262 CU. YDS.
DISTURBED AREA:	250,710 SQ. FT.
DISTURBED AREA:	5.76 ACRES

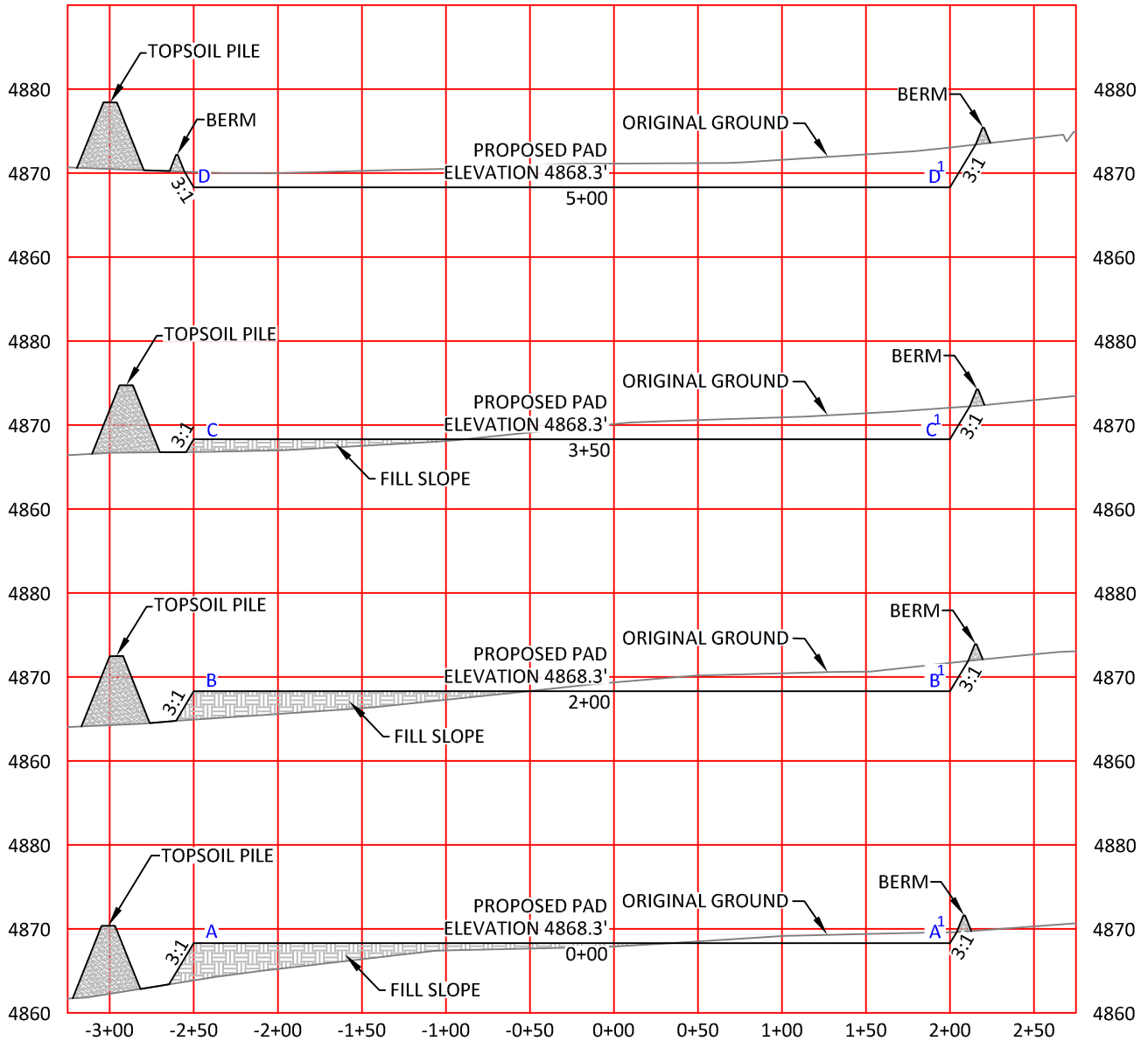
**LOCATION:**  
CROW VALLEY  
7-62-24-2H  
WITHIN THE NE/4  
NW/4 SECTION 24,  
T 7 N, R 62 W,  
6TH PM.  
WELD COUNTY,  
COLORADO

**MARATHON OIL COMPANY**  
PO BOX 3128, HOUSTON TX, 77253  
5555 SAN FELIPE, HOUSTON TX, 77056

DRAWN BY: LAL  
PROJECT NO: 762242H  
REVISIONS:

CHECKED BY: RAW  
JOB NO: 2011001

CONSTRUCTION LAYOUT	
349' FNL	2069' FWL
SCALE: 1"=100'	EXHIBIT "I"
DATE: 1/04/12	SHEET 8 OF 15



HORIZONTAL SCALE: 1"=100' - VERTICAL SCALE: 1"=20'

**NOTES:**

- Elevation of pad shown on plans are to constructed pad without final gravel padding placement. Depth, volume, and padding material to be determined by operator.
- The information contained in this plat is legally privileged and confidential information intended only for the use of the recipients. If you are not the intended recipients, you are hereby notified that any use, dissemination, distribution or copying of this information is strictly prohibited.



**WILLIAM H. SMITH  
& ASSOCIATES P.C.**

**SURVEYING CONSULTANTS**  
550 EAST SECOND NORTH PHONE: 307-875-3638  
GREEN RIVER, WY 307-875-3639  
www.whsmithpc.com

**CONSTRUCTION DATA**

CUT SLOPE:	3:1
FILL SLOPE:	3:1
TOTAL CUT:	12,407 CU. YDS.
TOTAL FILL:	7,502 CU. YDS.
TOP SOIL AT 6"	4,643 CU. YDS.
SPOIL	262 CU. YDS.
DISTURBED AREA	250,710 SQ. FT.
DISTURBED AREA	5.76 ACRES

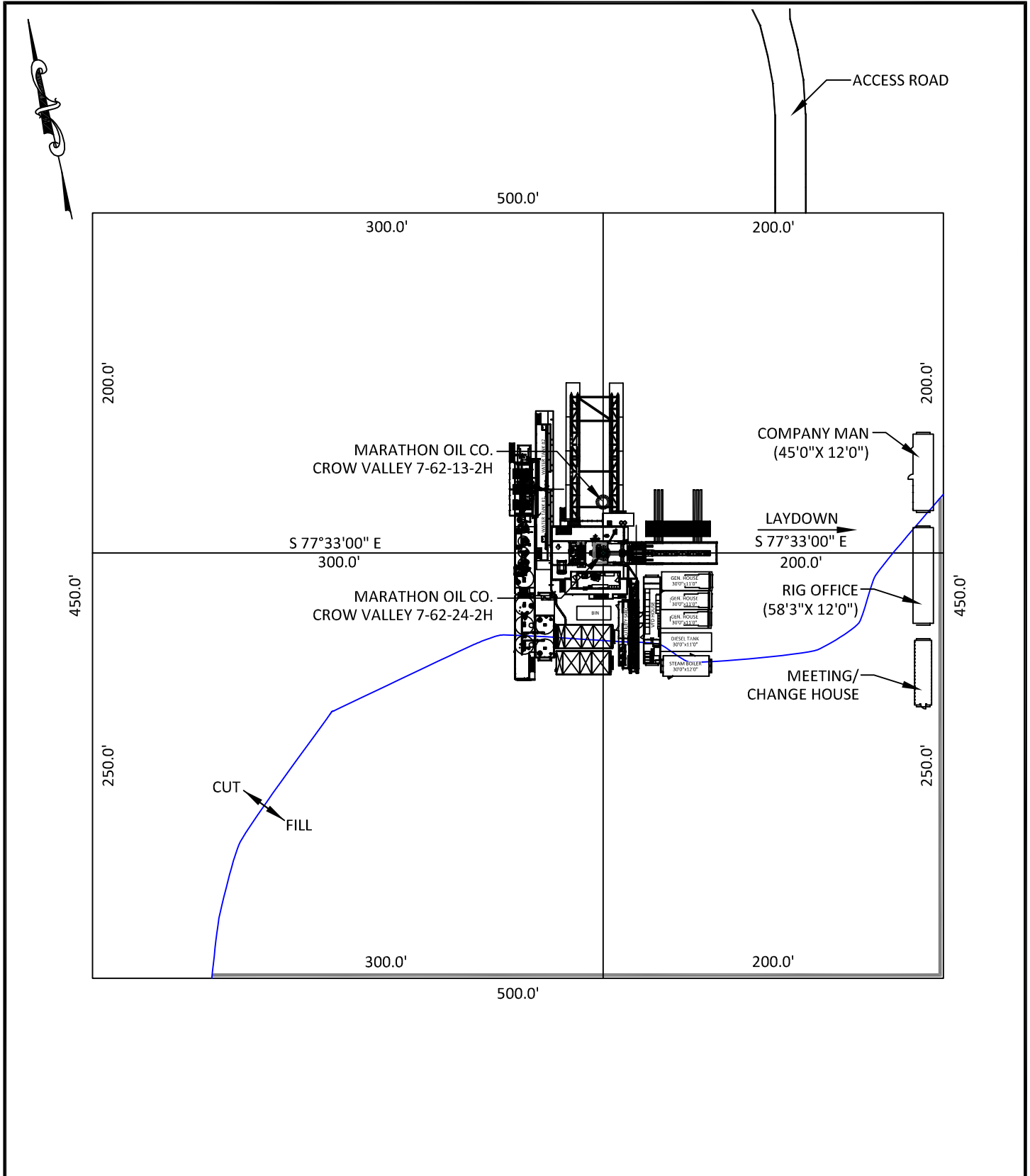
**LOCATION:**

CROW VALLEY  
7-62-24-2H  
WITHIN THE NE/4  
NW/4 SECTION 24,  
T 7 N, R 62 W,  
6TH PM.  
WELD COUNTY,  
COLORADO

**MARATHON OIL COMPANY**  
PO BOX 3128, HOUSTON TX, 77253  
5555 SAN FELIPE, HOUSTON TX, 77056

**CONSTRUCTION LAYOUT  
CROSS SECTIONS**

SCALE: NOTED	EXHIBIT "J"
DATE: 1/04/12	SHEET 9 OF 15



**WILLIAM H. SMITH  
& ASSOCIATES P.C.**

**SURVEYING CONSULTANTS**  
550 EAST SECOND NORTH PHONE: 307-875-3638  
GREEN RIVER, WY 307-875-3639  
www.whsmithpc.com

DRAWN BY: LAL	CHECKED BY: RAW
PROJECT NO: 762242H	JOB NO: 2011001
REVISIONS:	

**CONFIDENTIALITY NOTES:**  
The information contained in this plat is legally privileged and confidential information intended only for the use of the recipients. If you are not the intended recipients, you are hereby notified that any use, dissemination, distribution or copying of this information is strictly prohibited.

**LOCATION:**  
CROW VALLEY  
7-62-24-2H  
WITHIN THE NE/4  
NW/4 SECTION 24,  
T 7 N, R 62 W,  
6TH PM.  
WELD COUNTY,  
COLORADO

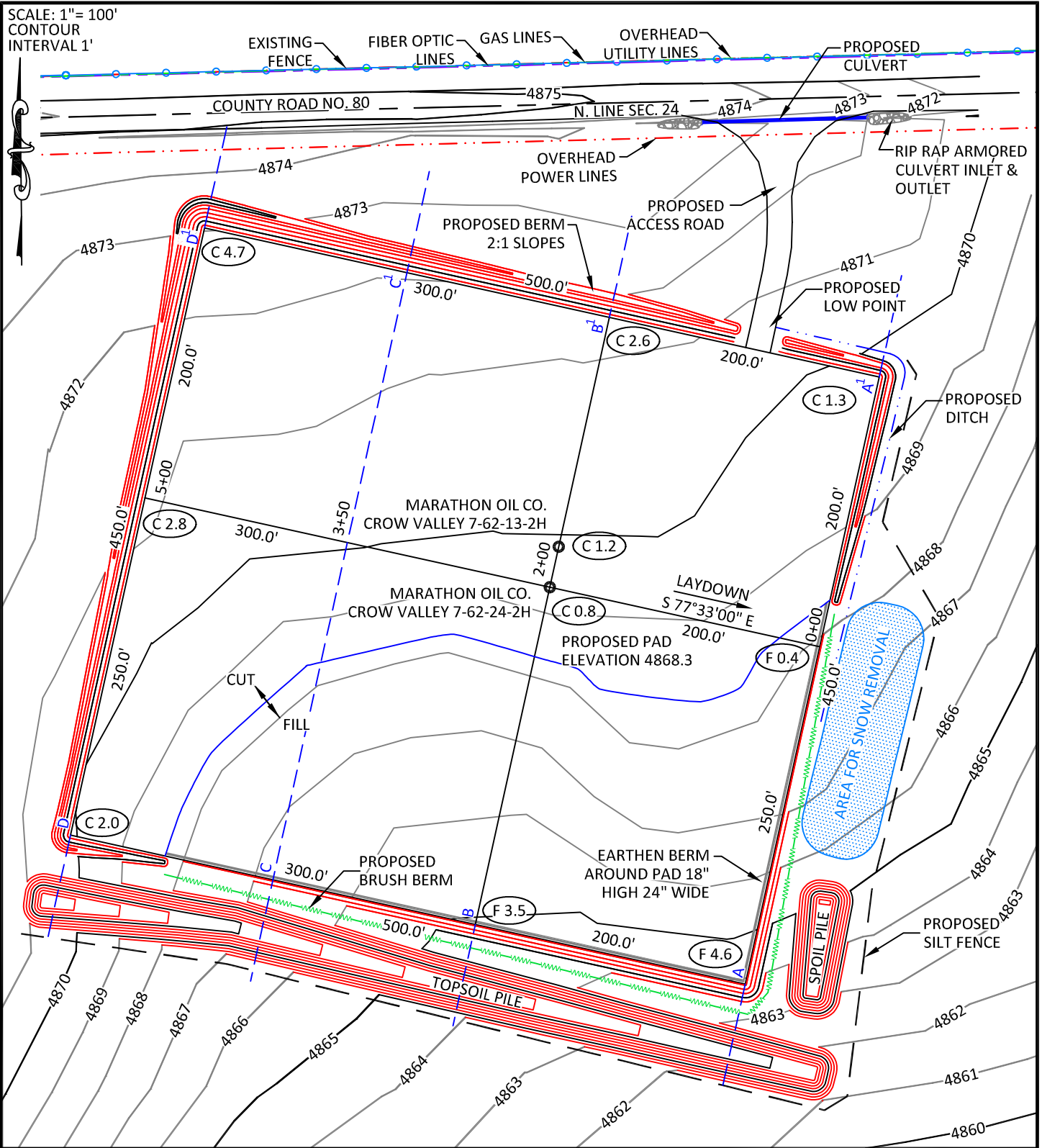
**MARATHON OIL COMPANY**  
PO BOX 3128, HOUSTON TX, 77253  
5555 SAN FELIPE, HOUSTON TX, 77056

**DRILLING FACILITIES**

SCALE: 1"=80'	EXHIBIT "K"
DATE: 1/04/12	SHEET 10 OF 15




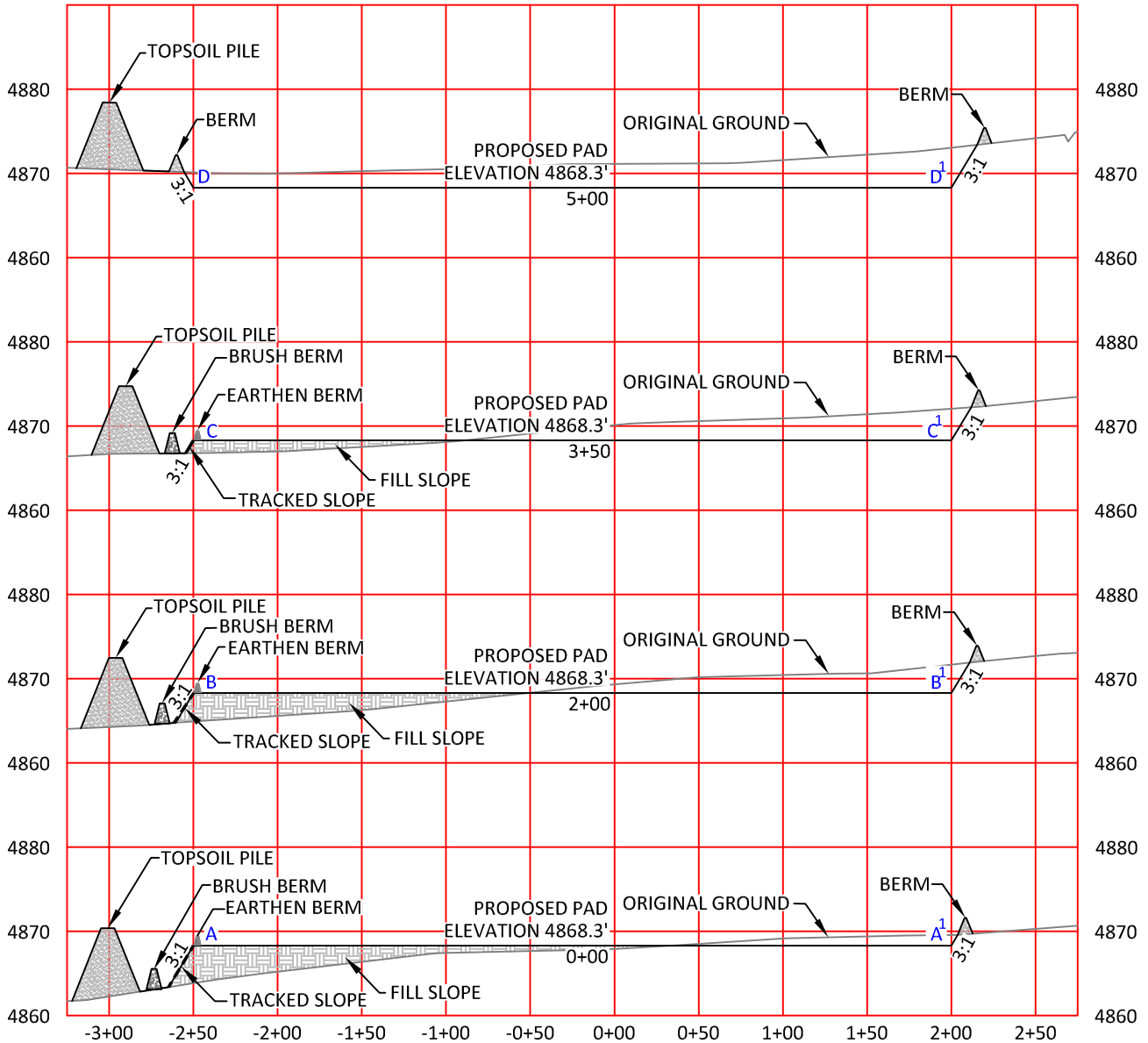
SCALE: 1" = 100'  
CONTOUR  
INTERVAL 1'



**CONFIDENTIALITY NOTES:**

The information contained in this plat is legally privileged and confidential information intended only for the use of the recipients. If you are not the intended recipients, you are hereby notified that any use, dissemination, distribution or copying of this information is strictly prohibited.

 <p><b>WILLIAM H. SMITH &amp; ASSOCIATES P.C.</b> SURVEYING CONSULTANTS 550 EAST SECOND NORTH GREEN RIVER, WY PHONE: 307-875-3638 307-875-3639 www.whsmithpc.com</p>		<p><b>LEGEND</b></p> <p>SILT FENCE ————</p> <p>EXISTING FENCE —●—●—</p> <p>BRUSH BERM ————</p>		<p><b>LOCATION:</b> CROW VALLEY 7-62-24-2H WITHIN THE NE/4 NW/4 SECTION 24, T 7 N, R 62 W, 6TH PM. WELD COUNTY, COLORADO</p>		<p><b>MARATHON OIL COMPANY</b> PO BOX 3128, HOUSTON TX, 77253 5555 SAN FELIPE, HOUSTON TX, 77056</p>	
						<p><b>STORM WATER PREVENTION PLAN</b></p>	
<p>DRAWN BY: LAL</p>	<p>CHECKED BY: RAW</p>	<p>PROJECT NO: 762242H</p>		<p>JOB NO: 2011001</p>		<p>SCALE: AS NOTED</p>	<p>EXHIBIT "M"</p>
<p>REVISIONS:</p>						<p>DATE: 1/04/12</p>	<p>SHEET 12 OF 15</p>



HORIZONTAL SCALE: 1"=100'  
 VERTICAL SCALE: 1"=20'



**WILLIAM H. SMITH  
& ASSOCIATES P.C.**  
 SURVEYING CONSULTANTS

550 EAST SECOND NORTH PHONE: 307-875-3638  
 GREEN RIVER, WY 307-875-3639  
 www.whsmithpc.com

DRAWN BY: LAL	CHECKED BY: RAW
PROJECT NO: 762242H	JOB NO: 2011001
REVISIONS:	

**CONFIDENTIALITY NOTES:**  
 The information contained in this plat is legally privileged and confidential information intended only for the use of the recipients. If you are not the intended recipients, you are hereby notified that any use, dissemination, distribution or copying of this information is strictly prohibited.

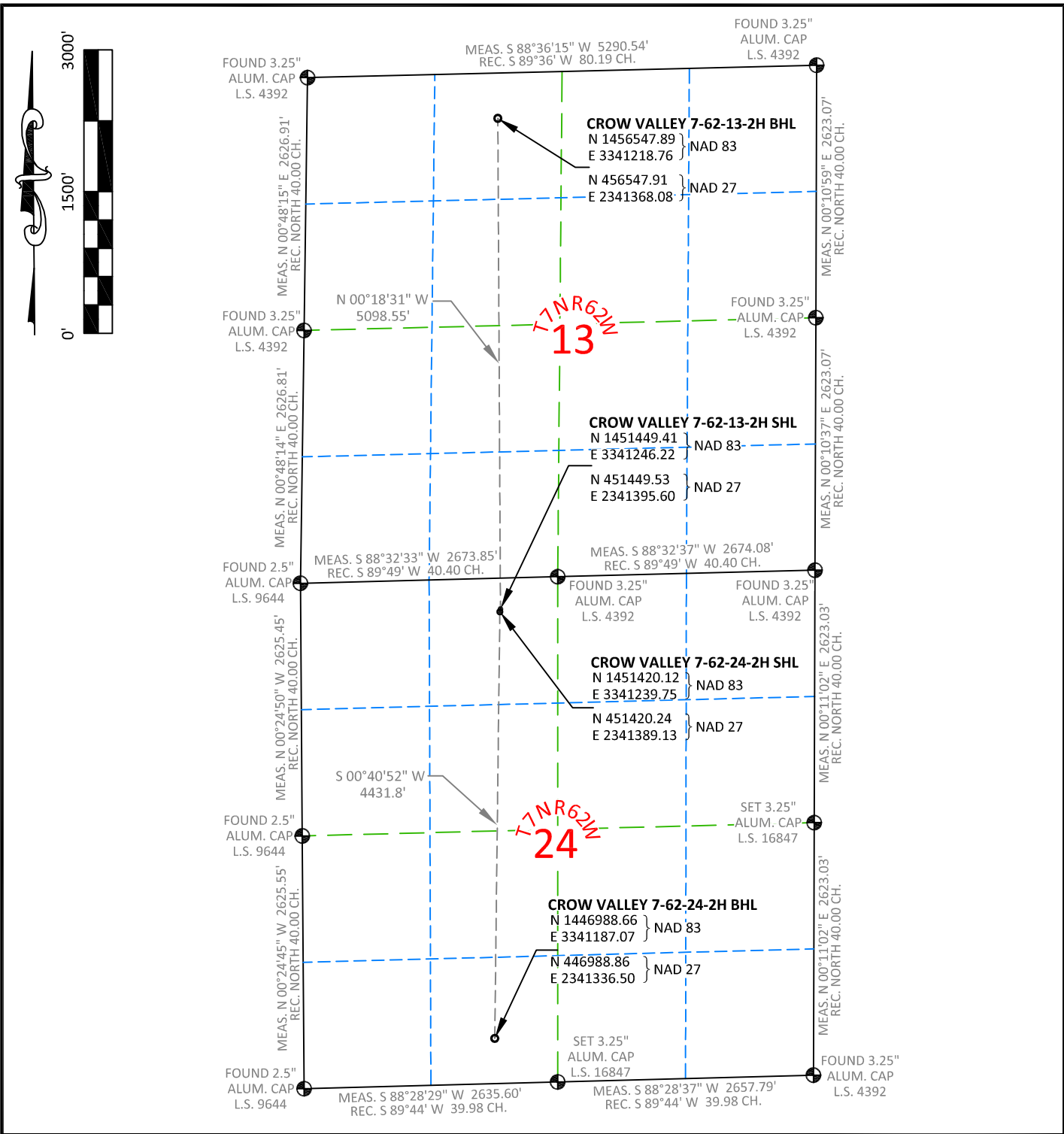
**LOCATION:**  
 CROW VALLEY  
 7-62-24-2H  
 WITHIN THE NE/4  
 NW/4 SECTION 24,  
 T 7 N, R 62 W,  
 6TH PM.  
 WELD COUNTY,  
 COLORADO

**MARATHON OIL COMPANY**  
 PO BOX 3128, HOUSTON TX, 77253  
 5555 SAN FELIPE, HOUSTON TX, 77056

**STORM WATER PREVENTION  
 CROSS SECTIONS**

SCALE: AS NOTED	EXHIBIT "N"
DATE: 1/04/12	SHEET 13 OF 15





**NOTES:**

- All bearings and distances are **GRID**, based on the Colorado State Plane Coordinate System, North Zone, North American Datum 1983 from GPS observations occupying a WHS control point (5/8" rebar) and having the Location and Elevation derived from an Opus Solution.
- Vertical Datum used is of NAVD 88.
- Record Bearings and Distances as shown are based on the General Land Office Survey plat approved on the 16th day of December 1872.

**WILLIAM H. SMITH & ASSOCIATES P.C.**  
**SURVEYING CONSULTANTS**  
 550 EAST SECOND NORTH GREEN RIVER, WY  
 PHONE: 307-875-3638 307-875-3639  
 www.whsmithpc.com

DRAWN BY: LAL	CHECKED BY: RAW
PROJECT NO: 762242H	JOB NO: 2011001
REVISIONS:	

**CONFIDENTIALITY NOTES:**  
 The information contained in this plat is legally privileged and confidential information intended only for the use of the recipients. If you are not the intended recipients, you are hereby notified that any use, dissemination, distribution or copying of this information is strictly prohibited.

**LOCATION:**  
 CROW VALLEY  
 7-62-14-2H  
 WITHIN THE NE ¼  
 NW ¼ SECTION 24,  
 T 7 N, R 62 W,  
 6TH PM.  
 WELD COUNTY,  
 COLORADO

**MARATHON OIL COMPANY**  
 PO BOX 3128, HOUSTON TX, 77253  
 5555 SAN FELIPE, HOUSTON TX, 77056

**MULTI WELL PAD**

SCALE: 1"=1500'	EXHIBIT "P"
DATE: 1/04/12	SHEET 15 OF 15