

ANADARKO E&P COMPANY LP

Location: COLORADO Slot: SLOT#09 CAMP 10N-30HZ (450'FSL & 1338'FEL, SEC.31)
 Field: WELD COUNTY (KERR MCGEE) Well: CAMP 10N-30HZ
 Facility: SEC.31-T3N-R65W Wellbore: CAMP 10N-30HZ PWB



Plot reference wellpath is CAMP 10N-30HZ (PERMIT) PWP

True vertical depths are referenced to XTREME 6 (RKB)	Grid System: NAD83 / Lambert Colorado SP, Northern Zone (501), US feet
Measured depths are referenced to XTREME 6 (RKB)	North Reference: True north
XTREME 6 (RKB) to Mean Sea Level: 4974 feet	Scale: True distance
Mean Sea Level to Mud line (At Slot: SLOT#09 CAMP 10N-30HZ (450'FSL & 1338'FEL, SEC.31)): 0 feet	Depths are in feet
Coordinates are in feet referenced to Slot	Created by: wilsje02 on 1/30/2012

Location Information

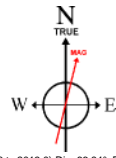
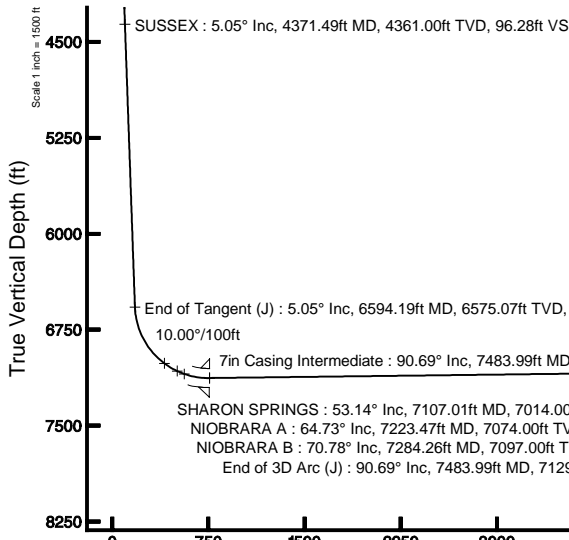
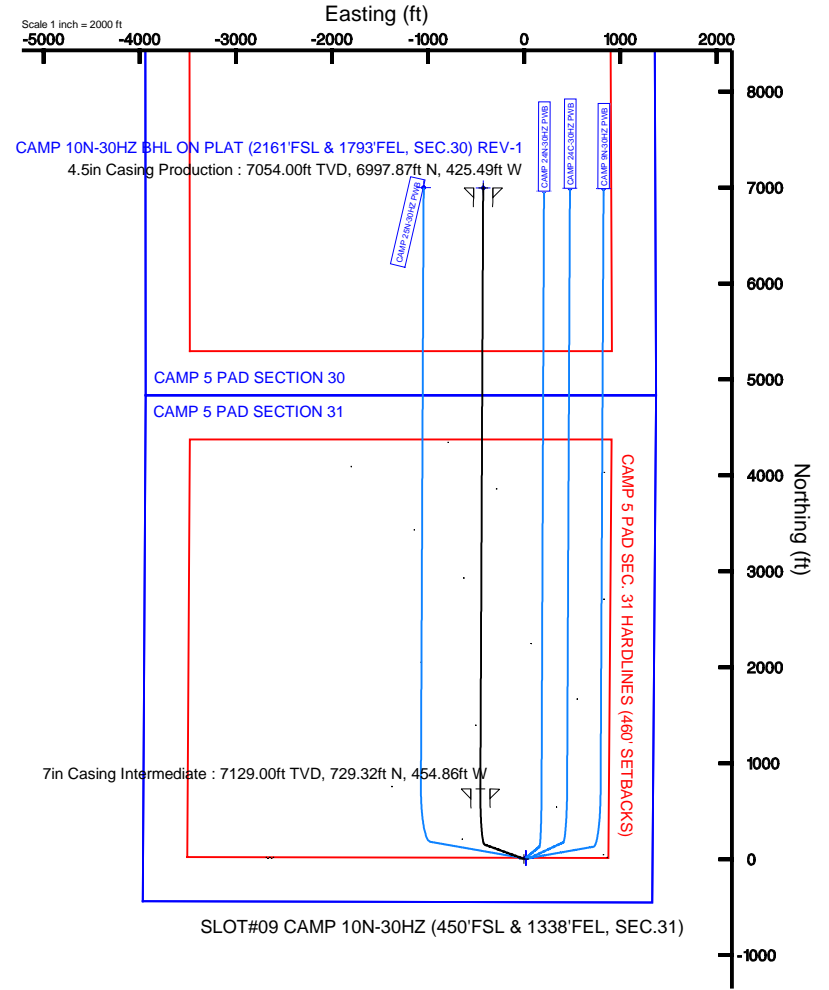
Facility Name		Grid East (US ft)	Grid North (US ft)	Latitude	Longitude	
SEC.31-T3N-R65W		3220388.633	1307925.729	40°10'33.460"N	104°42'40.493"W	
Slot	Local N (ft)	Local E (ft)	Grid East (US ft)	Grid North (US ft)	Latitude	Longitude
SLOT#09 CAMP 10N-30HZ (450'FSL & 1338'FEL, SEC.31)	-15.94	2684.91	3223083.457	1307933.667	40°10'33.301"N	104°42'05.904"W
XTREME 6 (RKB) to Mud line (At Slot: SLOT#09 CAMP 10N-30HZ (450'FSL & 1338'FEL, SEC.31))					4974ft	
Mean Sea Level to Mud line (At Slot: SLOT#09 CAMP 10N-30HZ (450'FSL & 1338'FEL, SEC.31))					0ft	
XTREME 6 (RKB) to Mean Sea Level					4974ft	

Well Profile Data

Design Comment	MD (ft)	Inc (°)	Az (°)	TVD (ft)	Local N (ft)	Local E (ft)	DLS (°/100ft)	VS (ft)
Tie On	25.00	0.00	290.000	25.00	0.00	0.00	0.00	0.00
End of Tangent	1500.00	0.00	290.000	1500.00	0.00	0.00	0.00	0.00
End of Build (J)	1752.50	5.050	290.000	1752.17	3.80	-10.45	2.00	4.43
End of Tangent (J)	6594.19	5.050	290.000	6575.07	149.57	-410.94	0.00	174.23
End of 3D Arc (J)	7483.99	90.685	0.268	7129.00	729.32	-454.86	10.00	755.58
End of Tangent (J)	13753.07	90.685	0.268	7054.00	6997.87	-425.49	0.00	7010.80

Targets

Name	MD (ft)	TVD (ft)	Local N (ft)	Local E (ft)	Grid East (US ft)	Grid North (US ft)	Latitude	Longitude
CAMP 5 PAD SECTION 30		0.00	9.82	19.02	3223102.38	1307943.65	40°10'33.398"N	104°42'05.659"W
CAMP 5 PAD SECTION 31		0.00	9.82	19.02	3223102.38	1307943.65	40°10'33.398"N	104°42'05.659"W
CAMP 10N-30HZ BHL ON PLAT (2161'FSL & 1793'FEL, SEC.30) REV-1	13753.07	7054.00	6997.87	-425.49	3222595.01	1314927.12	40°11'42.454"N	104°42'11.387"W
CAMP 5 PAD SEC. 30 HARDLINES (460' SETBACKS)		7400.00	9.82	19.02	3223102.38	1307943.65	40°10'33.398"N	104°42'05.659"W
CAMP 5 PAD SEC. 31 HARDLINES (460' SETBACKS)		7400.00	9.82	19.02	3223102.38	1307943.65	40°10'33.398"N	104°42'05.659"W



BGGM (1945.0 to 2013.0) Dip: 66.84° Field: 52948.3 nT
 Magnetic North is 8.72 degrees East of True North (at 1/30/2012)

To correct azimuth from Magnetic to True add 8.72 degrees
 For example: if the Magnetic North Azimuth = 90 degs, then the True North Azimuth = 90 + 8.72 = 98.72

Vertical Section (ft)
 Azimuth 356.52° with reference 0.00 N, 0.00 E

Scale 1 inch = 1500 ft



Planned Wellpath Report

CAMP 10N-30HZ (PERMIT) PWP

Page 1 of 6



REFERENCE WELLPATH IDENTIFICATION

Operator	ANADARKO E&P COMPANY LP	Slot	SLOT#09 CAMP 10N-30HZ (450'FSL & 1338'FEL, SEC.31)
Area	COLORADO	Well	CAMP 10N-30HZ
Field	WELD COUNTY (KERR MCGEE)	Wellbore	CAMP 10N-30HZ PWB
Facility	SEC.31-T3N-R65W		

REPORT SETUP INFORMATION

Projection System	NAD83 / Lambert Colorado SP, Northern Zone (501), US feet	Software System	WellArchitect® 3.0.2
North Reference	True	User	Wilsjef02
Scale	0.999958	Report Generated	1/30/2012 at 2:19:26 PM
Convergence at slot	0.52° East	Database/Source file	WellArchitectDB/CAMP_10N-30HZ_PWB.xml

WELLPATH LOCATION

	Local coordinates		Grid coordinates		Geographic coordinates	
	North[ft]	East[ft]	Easting[US ft]	Northing[US ft]	Latitude	Longitude
Slot Location	-15.94	2684.91	3223083.46	1307933.67	40°10'33.301"N	104°42'05.904"W
Facility Reference Pt			3220398.63	1307925.73	40°10'33.460"N	104°42'40.493"W
Field Reference Pt			3197771.84	1268891.29	40°04'09.600"N	104°47'36.000"W

WELLPATH DATUM

Calculation method	Minimum curvature	XTREME 6 (RKB) to Facility Vertical Datum	4974.00ft
Horizontal Reference Pt	Slot	XTREME 6 (RKB) to Mean Sea Level	4974.00ft
Vertical Reference Pt	XTREME 6 (RKB)	XTREME 6 (RKB) to Mud Line at Slot (SLOT#09 CAMP 10N-30HZ (450'FSL & 1338'FEL, SEC.31))	4974.00ft
MD Reference Pt	XTREME 6 (RKB)	Section Origin	N 0.00, E 0.00 ft
Field Vertical Reference	Mean Sea Level	Section Azimuth	356.52°



Planned Wellpath Report

CAMP 10N-30HZ (PERMIT) PWP

Page 2 of 6



REFERENCE WELLPATH IDENTIFICATION				
Operator	ANADARKO E&P COMPANY LP		Slot	SLOT#09 CAMP 10N-30HZ (450'FSL & 1338'FEL, SEC.31)
Area	COLORADO		Well	CAMP 10N-30HZ
Field	WELD COUNTY (KERR MCGEE)		Wellbore	CAMP 10N-30HZ PWB
Facility	SEC.31-T3N-R65W			

WELLPATH DATA (149 stations) † = interpolated/extrapolated station										
MD [ft]	Inclination [°]	Azimuth [°]	TVD [ft]	Vert Sect [ft]	North [ft]	East [ft]	Latitude	Longitude	DLS [°/100ft]	Comments
0.00†	0.000	290.000	0.00	0.00	0.00	0.00	40°10'33.301"N	104°42'05.904"W	0.00	
25.00	0.000	290.000	25.00	0.00	0.00	0.00	40°10'33.301"N	104°42'05.904"W	0.00	Tie On
125.00†	0.000	290.000	125.00	0.00	0.00	0.00	40°10'33.301"N	104°42'05.904"W	0.00	
225.00†	0.000	290.000	225.00	0.00	0.00	0.00	40°10'33.301"N	104°42'05.904"W	0.00	
325.00†	0.000	290.000	325.00	0.00	0.00	0.00	40°10'33.301"N	104°42'05.904"W	0.00	
425.00†	0.000	290.000	425.00	0.00	0.00	0.00	40°10'33.301"N	104°42'05.904"W	0.00	
525.00†	0.000	290.000	525.00	0.00	0.00	0.00	40°10'33.301"N	104°42'05.904"W	0.00	
625.00†	0.000	290.000	625.00	0.00	0.00	0.00	40°10'33.301"N	104°42'05.904"W	0.00	
725.00†	0.000	290.000	725.00	0.00	0.00	0.00	40°10'33.301"N	104°42'05.904"W	0.00	
825.00†	0.000	290.000	825.00	0.00	0.00	0.00	40°10'33.301"N	104°42'05.904"W	0.00	
925.00†	0.000	290.000	925.00	0.00	0.00	0.00	40°10'33.301"N	104°42'05.904"W	0.00	
1025.00†	0.000	290.000	1025.00	0.00	0.00	0.00	40°10'33.301"N	104°42'05.904"W	0.00	
1125.00†	0.000	290.000	1125.00	0.00	0.00	0.00	40°10'33.301"N	104°42'05.904"W	0.00	
1225.00†	0.000	290.000	1225.00	0.00	0.00	0.00	40°10'33.301"N	104°42'05.904"W	0.00	
1325.00†	0.000	290.000	1325.00	0.00	0.00	0.00	40°10'33.301"N	104°42'05.904"W	0.00	
1425.00†	0.000	290.000	1425.00	0.00	0.00	0.00	40°10'33.301"N	104°42'05.904"W	0.00	
1500.00	0.000	290.000	1500.00	0.00	0.00	0.00	40°10'33.301"N	104°42'05.904"W	0.00	End of Tangent
1525.00†	0.500	290.000	1525.00	0.04	0.04	-0.10	40°10'33.301"N	104°42'05.905"W	2.00	
1625.00†	2.500	290.000	1624.96	1.09	0.93	-2.56	40°10'33.310"N	104°42'05.937"W	2.00	
1725.00†	4.500	290.000	1724.77	3.52	3.02	-8.30	40°10'33.331"N	104°42'06.011"W	2.00	
1752.50	5.050	290.000	1752.17	4.43	3.80	-10.45	40°10'33.339"N	104°42'06.039"W	2.00	End of Build (J)
1825.00†	5.050	290.000	1824.39	6.97	5.99	-16.45	40°10'33.360"N	104°42'06.116"W	0.00	
1925.00†	5.050	290.000	1924.00	10.48	9.00	-24.72	40°10'33.390"N	104°42'06.222"W	0.00	
2025.00†	5.050	290.000	2023.62	13.99	12.01	-32.99	40°10'33.420"N	104°42'06.329"W	0.00	
2125.00†	5.050	290.000	2123.23	17.49	15.02	-41.26	40°10'33.449"N	104°42'06.436"W	0.00	
2225.00†	5.050	290.000	2222.84	21.00	18.03	-49.53	40°10'33.479"N	104°42'06.542"W	0.00	
2325.00†	5.050	290.000	2322.45	24.51	21.04	-57.80	40°10'33.509"N	104°42'06.649"W	0.00	
2425.00†	5.050	290.000	2422.06	28.02	24.05	-66.08	40°10'33.539"N	104°42'06.755"W	0.00	
2525.00†	5.050	290.000	2521.67	31.52	27.06	-74.35	40°10'33.568"N	104°42'06.862"W	0.00	
2625.00†	5.050	290.000	2621.29	35.03	30.07	-82.62	40°10'33.598"N	104°42'06.968"W	0.00	
2725.00†	5.050	290.000	2720.90	38.54	33.08	-90.89	40°10'33.628"N	104°42'07.075"W	0.00	
2825.00†	5.050	290.000	2820.51	42.04	36.09	-99.16	40°10'33.658"N	104°42'07.181"W	0.00	
2925.00†	5.050	290.000	2920.12	45.55	39.10	-107.43	40°10'33.687"N	104°42'07.288"W	0.00	
3025.00†	5.050	290.000	3019.73	49.06	42.11	-115.71	40°10'33.717"N	104°42'07.395"W	0.00	
3125.00†	5.050	290.000	3119.35	52.57	45.12	-123.98	40°10'33.747"N	104°42'07.501"W	0.00	
3225.00†	5.050	290.000	3218.96	56.07	48.13	-132.25	40°10'33.777"N	104°42'07.608"W	0.00	
3325.00†	5.050	290.000	3318.57	59.58	51.15	-140.52	40°10'33.806"N	104°42'07.714"W	0.00	
3425.00†	5.050	290.000	3418.18	63.09	54.16	-148.79	40°10'33.836"N	104°42'07.821"W	0.00	
3525.00†	5.050	290.000	3517.79	66.59	57.17	-157.06	40°10'33.866"N	104°42'07.927"W	0.00	
3625.00†	5.050	290.000	3617.40	70.10	60.18	-165.34	40°10'33.896"N	104°42'08.034"W	0.00	
3725.00†	5.050	290.000	3717.02	73.61	63.19	-173.61	40°10'33.925"N	104°42'08.141"W	0.00	
3825.00†	5.050	290.000	3816.63	77.12	66.20	-181.88	40°10'33.955"N	104°42'08.247"W	0.00	
3925.00†	5.050	290.000	3916.24	80.62	69.21	-190.15	40°10'33.985"N	104°42'08.354"W	0.00	
3951.86†	5.050	290.000	3943.00	81.56	70.02	-192.37	40°10'33.993"N	104°42'08.382"W	0.00	PARKMAN
4025.00†	5.050	290.000	4015.85	84.13	72.22	-198.42	40°10'34.015"N	104°42'08.460"W	0.00	
4125.00†	5.050	290.000	4115.46	87.64	75.23	-206.69	40°10'34.044"N	104°42'08.567"W	0.00	
4225.00†	5.050	290.000	4215.08	91.14	78.24	-214.97	40°10'34.074"N	104°42'08.673"W	0.00	
4325.00†	5.050	290.000	4314.69	94.65	81.25	-223.24	40°10'34.104"N	104°42'08.780"W	0.00	
4371.49†	5.050	290.000	4361.00	96.28	82.65	-227.08	40°10'34.118"N	104°42'08.829"W	0.00	SUSSEX
4425.00†	5.050	290.000	4414.30	98.16	84.26	-231.51	40°10'34.134"N	104°42'08.886"W	0.00	
4525.00†	5.050	290.000	4513.91	101.66	87.27	-239.78	40°10'34.163"N	104°42'08.993"W	0.00	
4625.00†	5.050	290.000	4613.52	105.17	90.28	-248.05	40°10'34.193"N	104°42'09.100"W	0.00	
4725.00†	5.050	290.000	4713.13	108.68	93.29	-256.32	40°10'34.223"N	104°42'09.206"W	0.00	
4825.00†	5.050	290.000	4812.75	112.19	96.31	-264.60	40°10'34.253"N	104°42'09.313"W	0.00	
4925.00†	5.050	290.000	4912.36	115.69	99.32	-272.87	40°10'34.282"N	104°42'09.419"W	0.00	
5025.00†	5.050	290.000	5011.97	119.20	102.33	-281.14	40°10'34.312"N	104°42'09.526"W	0.00	
5125.00†	5.050	290.000	5111.58	122.71	105.34	-289.41	40°10'34.342"N	104°42'09.632"W	0.00	
5225.00†	5.050	290.000	5211.19	126.21	108.35	-297.68	40°10'34.372"N	104°42'09.739"W	0.00	
5325.00†	5.050	290.000	5310.81	129.72	111.36	-305.95	40°10'34.401"N	104°42'09.846"W	0.00	
5425.00†	5.050	290.000	5410.42	133.23	114.37	-314.23	40°10'34.431"N	104°42'09.952"W	0.00	



Planned Wellpath Report

CAMP 10N-30HZ (PERMIT) PWP



REFERENCE WELLPATH IDENTIFICATION				
Operator	ANADARKO E&P COMPANY LP		Slot	SLOT#09 CAMP 10N-30HZ (450'FSL & 1338'FEL, SEC.31)
Area	COLORADO		Well	CAMP 10N-30HZ
Field	WELD COUNTY (KERR MCGEE)		Wellbore	CAMP 10N-30HZ PWB
Facility	SEC.31-T3N-R65W			

WELLPATH DATA (149 stations) † = interpolated/extrapolated station										
MD [ft]	Inclination [°]	Azimuth [°]	TVD [ft]	Vert Sect [ft]	North [ft]	East [ft]	Latitude	Longitude	DLS [°/100ft]	Comments
5525.00†	5.050	290.000	5510.03	136.74	117.38	-322.50	40°10'34.461"N	104°42'10.059"W	0.00	
5625.00†	5.050	290.000	5609.64	140.24	120.39	-330.77	40°10'34.491"N	104°42'10.165"W	0.00	
5725.00†	5.050	290.000	5709.25	143.75	123.40	-339.04	40°10'34.520"N	104°42'10.272"W	0.00	
5825.00†	5.050	290.000	5808.86	147.26	126.41	-347.31	40°10'34.550"N	104°42'10.378"W	0.00	
5925.00†	5.050	290.000	5908.48	150.76	129.42	-355.58	40°10'34.580"N	104°42'10.485"W	0.00	
6025.00†	5.050	290.000	6008.09	154.27	132.43	-363.86	40°10'34.610"N	104°42'10.591"W	0.00	
6125.00†	5.050	290.000	6107.70	157.78	135.44	-372.13	40°10'34.639"N	104°42'10.698"W	0.00	
6225.00†	5.050	290.000	6207.31	161.29	138.45	-380.40	40°10'34.669"N	104°42'10.805"W	0.00	
6325.00†	5.050	290.000	6306.92	164.79	141.46	-388.67	40°10'34.699"N	104°42'10.911"W	0.00	
6425.00†	5.050	290.000	6406.54	168.30	144.48	-396.94	40°10'34.729"N	104°42'11.018"W	0.00	
6525.00†	5.050	290.000	6506.15	171.81	147.49	-405.21	40°10'34.758"N	104°42'11.124"W	0.00	
6594.19	5.050	290.000	6575.07	174.23	149.57	-410.94	40°10'34.779"N	104°42'11.198"W	0.00	End of Tangent (J)
6625.00†	6.743	315.524	6605.72	176.14	151.32	-413.48	40°10'34.796"N	104°42'11.231"W	10.00	
6725.00†	15.518	342.786	6703.80	193.61	168.33	-421.57	40°10'34.964"N	104°42'11.335"W	10.00	
6825.00†	25.212	350.039	6797.45	227.85	202.17	-429.23	40°10'35.299"N	104°42'11.434"W	10.00	
6925.00†	35.071	353.410	6883.83	277.83	251.82	-436.23	40°10'35.789"N	104°42'11.524"W	10.00	
7025.00†	44.987	355.440	6960.31	342.02	315.76	-442.36	40°10'36.421"N	104°42'11.603"W	10.00	
7107.01†	53.138	356.637	7014.00	403.91	377.51	-446.59	40°10'37.031"N	104°42'11.657"W	10.00	SHARON SPRINGS
7125.00†	54.928	356.865	7024.57	418.48	392.04	-447.42	40°10'37.175"N	104°42'11.668"W	10.00	
7223.47†	64.729	357.962	7074.00	503.49	476.98	-451.22	40°10'38.015"N	104°42'11.717"W	10.00	NIOBRARA A
7225.00†	64.881	357.977	7074.65	504.87	478.37	-451.26	40°10'38.028"N	104°42'11.718"W	10.00	
7284.26†	70.784	358.551	7097.00	559.70	533.20	-452.92	40°10'38.570"N	104°42'11.739"W	10.00	NIOBRARA B
7325.00†	74.842	358.921	7109.04	598.59	572.10	-453.78	40°10'38.954"N	104°42'11.750"W	10.00	
7425.00†	84.807	359.778	7126.68	696.77	670.40	-454.88	40°10'39.926"N	104°42'11.764"W	10.00	
7483.99	90.685	0.268	7129.00	755.58	729.32	-454.86	40°10'40.508"N	104°42'11.764"W	10.00	End of 3D Arc (J)
7525.00†	90.685	0.268	7128.51	796.50	770.32	-454.67	40°10'40.913"N	104°42'11.762"W	0.00	
7625.00†	90.685	0.268	7127.31	896.27	870.31	-454.20	40°10'41.901"N	104°42'11.756"W	0.00	
7725.00†	90.685	0.268	7126.12	996.05	970.31	-453.73	40°10'42.890"N	104°42'11.749"W	0.00	
7825.00†	90.685	0.268	7124.92	1095.83	1070.30	-453.26	40°10'43.878"N	104°42'11.743"W	0.00	
7925.00†	90.685	0.268	7123.72	1195.61	1170.29	-452.79	40°10'44.866"N	104°42'11.737"W	0.00	
8025.00†	90.685	0.268	7122.53	1295.39	1270.28	-452.32	40°10'45.854"N	104°42'11.731"W	0.00	
8125.00†	90.685	0.268	7121.33	1395.17	1370.27	-451.85	40°10'46.842"N	104°42'11.725"W	0.00	
8225.00†	90.685	0.268	7120.13	1494.95	1470.26	-451.39	40°10'47.830"N	104°42'11.719"W	0.00	
8325.00†	90.685	0.268	7118.94	1594.73	1570.26	-450.92	40°10'48.818"N	104°42'11.713"W	0.00	
8425.00†	90.685	0.268	7117.74	1694.51	1670.25	-450.45	40°10'49.806"N	104°42'11.707"W	0.00	
8525.00†	90.685	0.268	7116.55	1794.29	1770.24	-449.98	40°10'50.794"N	104°42'11.701"W	0.00	
8625.00†	90.685	0.268	7115.35	1894.06	1870.23	-449.51	40°10'51.783"N	104°42'11.695"W	0.00	
8725.00†	90.685	0.268	7114.15	1993.84	1970.22	-449.04	40°10'52.771"N	104°42'11.689"W	0.00	
8825.00†	90.685	0.268	7112.96	2093.62	2070.21	-448.57	40°10'53.759"N	104°42'11.683"W	0.00	
8925.00†	90.685	0.268	7111.76	2193.40	2170.21	-448.11	40°10'54.747"N	104°42'11.677"W	0.00	
9025.00†	90.685	0.268	7110.56	2293.18	2270.20	-447.64	40°10'55.735"N	104°42'11.671"W	0.00	
9125.00†	90.685	0.268	7109.37	2392.96	2370.19	-447.17	40°10'56.723"N	104°42'11.665"W	0.00	
9225.00†	90.685	0.268	7108.17	2492.74	2470.18	-446.70	40°10'57.711"N	104°42'11.659"W	0.00	
9325.00†	90.685	0.268	7106.97	2592.52	2570.17	-446.23	40°10'58.699"N	104°42'11.653"W	0.00	
9425.00†	90.685	0.268	7105.78	2692.30	2670.17	-445.76	40°10'59.688"N	104°42'11.647"W	0.00	
9525.00†	90.685	0.268	7104.58	2792.08	2770.16	-445.30	40°11'00.676"N	104°42'11.641"W	0.00	
9625.00†	90.685	0.268	7103.39	2891.85	2870.15	-444.83	40°11'01.664"N	104°42'11.635"W	0.00	
9725.00†	90.685	0.268	7102.19	2991.63	2970.14	-444.36	40°11'02.652"N	104°42'11.629"W	0.00	
9825.00†	90.685	0.268	7100.99	3091.41	3070.13	-443.89	40°11'03.640"N	104°42'11.623"W	0.00	
9925.00†	90.685	0.268	7099.80	3191.19	3170.12	-443.42	40°11'04.628"N	104°42'11.617"W	0.00	
10025.00†	90.685	0.268	7098.60	3290.97	3270.12	-442.95	40°11'05.616"N	104°42'11.611"W	0.00	
10125.00†	90.685	0.268	7097.40	3390.75	3370.11	-442.48	40°11'06.604"N	104°42'11.605"W	0.00	
10225.00†	90.685	0.268	7096.21	3490.53	3470.10	-442.02	40°11'07.593"N	104°42'11.599"W	0.00	
10325.00†	90.685	0.268	7095.01	3590.31	3570.09	-441.55	40°11'08.581"N	104°42'11.593"W	0.00	
10425.00†	90.685	0.268	7093.81	3690.09	3670.08	-441.08	40°11'09.569"N	104°42'11.587"W	0.00	
10525.00†	90.685	0.268	7092.62	3789.87	3770.07	-440.61	40°11'10.557"N	104°42'11.581"W	0.00	
10625.00†	90.685	0.268	7091.42	3889.64	3870.07	-440.14	40°11'11.545"N	104°42'11.575"W	0.00	
10725.00†	90.685	0.268	7090.23	3989.42	3970.06	-439.67	40°11'12.533"N	104°42'11.569"W	0.00	
10825.00†	90.685	0.268	7089.03	4089.20	4070.05	-439.21	40°11'13.521"N	104°42'11.563"W	0.00	
10925.00†	90.685	0.268	7087.83	4188.98	4170.04	-438.74	40°11'14.509"N	104°42'11.557"W	0.00	



Planned Wellpath Report

CAMP 10N-30HZ (PERMIT) PWP

Page 4 of 6



REFERENCE WELLPATH IDENTIFICATION				
Operator	ANADARKO E&P COMPANY LP		Slot	SLOT#09 CAMP 10N-30HZ (450'FSL & 1338'FEL, SEC.31)
Area	COLORADO		Well	CAMP 10N-30HZ
Field	WELD COUNTY (KERR MCGEE)		Wellbore	CAMP 10N-30HZ PWB
Facility	SEC.31-T3N-R65W			

WELLPATH DATA (149 stations) † = interpolated/extrapolated station										
MD [ft]	Inclination [°]	Azimuth [°]	TVD [ft]	Vert Sect [ft]	North [ft]	East [ft]	Latitude	Longitude	DLS [°/100ft]	Comments
11025.00†	90.685	0.268	7086.64	4288.76	4270.03	-438.27	40°11'15.497"N	104°42'11.551"W	0.00	
11125.00†	90.685	0.268	7085.44	4388.54	4370.02	-437.80	40°11'16.486"N	104°42'11.545"W	0.00	
11225.00†	90.685	0.268	7084.24	4488.32	4470.02	-437.33	40°11'17.474"N	104°42'11.539"W	0.00	
11325.00†	90.685	0.268	7083.05	4588.10	4570.01	-436.86	40°11'18.462"N	104°42'11.533"W	0.00	
11425.00†	90.685	0.268	7081.85	4687.88	4670.00	-436.39	40°11'19.450"N	104°42'11.527"W	0.00	
11525.00†	90.685	0.268	7080.66	4787.66	4769.99	-435.93	40°11'20.438"N	104°42'11.521"W	0.00	
11625.00†	90.685	0.268	7079.46	4887.43	4869.98	-435.46	40°11'21.426"N	104°42'11.515"W	0.00	
11725.00†	90.685	0.268	7078.26	4987.21	4969.98	-434.99	40°11'22.414"N	104°42'11.509"W	0.00	
11825.00†	90.685	0.268	7077.07	5086.99	5069.97	-434.52	40°11'23.402"N	104°42'11.503"W	0.00	
11925.00†	90.685	0.268	7075.87	5186.77	5169.96	-434.05	40°11'24.391"N	104°42'11.497"W	0.00	
12025.00†	90.685	0.268	7074.67	5286.55	5269.95	-433.58	40°11'25.379"N	104°42'11.491"W	0.00	
12125.00†	90.685	0.268	7073.48	5386.33	5369.94	-433.11	40°11'26.367"N	104°42'11.485"W	0.00	
12225.00†	90.685	0.268	7072.28	5486.11	5469.93	-432.65	40°11'27.355"N	104°42'11.479"W	0.00	
12325.00†	90.685	0.268	7071.08	5585.89	5569.93	-432.18	40°11'28.343"N	104°42'11.473"W	0.00	
12425.00†	90.685	0.268	7069.89	5685.67	5669.92	-431.71	40°11'29.331"N	104°42'11.467"W	0.00	
12525.00†	90.685	0.268	7068.69	5785.45	5769.91	-431.24	40°11'30.319"N	104°42'11.461"W	0.00	
12625.00†	90.685	0.268	7067.50	5885.22	5869.90	-430.77	40°11'31.307"N	104°42'11.455"W	0.00	
12725.00†	90.685	0.268	7066.30	5985.00	5969.89	-430.30	40°11'32.295"N	104°42'11.449"W	0.00	
12825.00†	90.685	0.268	7065.10	6084.78	6069.88	-429.84	40°11'33.284"N	104°42'11.443"W	0.00	
12925.00†	90.685	0.268	7063.91	6184.56	6169.88	-429.37	40°11'34.272"N	104°42'11.437"W	0.00	
13025.00†	90.685	0.268	7062.71	6284.34	6269.87	-428.90	40°11'35.260"N	104°42'11.431"W	0.00	
13125.00†	90.685	0.268	7061.51	6384.12	6369.86	-428.43	40°11'36.248"N	104°42'11.425"W	0.00	
13225.00†	90.685	0.268	7060.32	6483.90	6469.85	-427.96	40°11'37.236"N	104°42'11.419"W	0.00	
13325.00†	90.685	0.268	7059.12	6583.68	6569.84	-427.49	40°11'38.224"N	104°42'11.413"W	0.00	
13425.00†	90.685	0.268	7057.92	6683.46	6669.83	-427.02	40°11'39.212"N	104°42'11.407"W	0.00	
13525.00†	90.685	0.268	7056.73	6783.24	6769.83	-426.56	40°11'40.200"N	104°42'11.401"W	0.00	
13625.00†	90.685	0.268	7055.53	6883.01	6869.82	-426.09	40°11'41.189"N	104°42'11.395"W	0.00	
13725.00†	90.685	0.268	7054.34	6982.79	6969.81	-425.62	40°11'42.177"N	104°42'11.389"W	0.00	
13753.07	90.685	0.268	7054.00 [†]	7010.80	6997.87	-425.49	40°11'42.454"N	104°42'11.387"W	0.00	End of Tangent (J)

HOLE & CASING SECTIONS - Ref Wellbore: CAMP 10N-30HZ PWB Ref Wellpath: CAMP 10N-30HZ (PERMIT) PWP									
String/Diameter	Start MD [ft]	End MD [ft]	Interval [ft]	Start TVD [ft]	End TVD [ft]	Start N/S [ft]	Start E/W [ft]	End N/S [ft]	End E/W [ft]
13.5in Open Hole	25.00	800.00	775.00	25.00	800.00	0.00	0.00	0.00	0.00
9.625in Casing Surface	25.00	800.00	775.00	25.00	800.00	0.00	0.00	0.00	0.00
8.75in Open Hole	800.00	7483.99	6683.99	800.00	7129.00	0.00	0.00	729.32	-454.86
7in Casing Intermediate	25.00	7483.99	7458.99	25.00	7129.00	0.00	0.00	729.32	-454.86
6.125in Open Hole	7483.99	13753.07	6269.08	7129.00	7054.00	729.32	-454.86	6997.87	-425.49
4.5in Casing Production	25.00	13753.07	13728.07	25.00	7054.00	0.00	0.00	6997.87	-425.49



Planned Wellpath Report

CAMP 10N-30HZ (PERMIT) PWP

Page 5 of 6



REFERENCE WELLPATH IDENTIFICATION			
Operator	ANADARKO E&P COMPANY LP	Slot	SLOT#09 CAMP 10N-30HZ (450'FSL & 1338'FEL, SEC.31)
Area	COLORADO	Well	CAMP 10N-30HZ
Field	WELD COUNTY (KERR MCGEE)	Wellbore	CAMP 10N-30HZ PWB
Facility	SEC.31-T3N-R65W		

TARGETS									
Name	MD [ft]	TVD [ft]	North [ft]	East [ft]	Grid East [US ft]	Grid North [US ft]	Latitude	Longitude	Shape
CAMP 5 PAD SECTION 30		0.00	9.82	19.02	3223102.38	1307943.65	40°10'33.398"N	104°42'05.659"W	polygon
CAMP 5 PAD SECTION 31		0.00	9.82	19.02	3223102.38	1307943.65	40°10'33.398"N	104°42'05.659"W	polygon
1) CAMP 10N-30HZ BHL ON PLAT (2161'FSL & 1793'FEL, SEC.30) REV-1	13753.07	7054.00	6997.87	-425.49	3222595.01	1314927.12	40°11'42.454"N	104°42'11.387"W	point
CAMP 5 PAD SEC. 30 HARDLINES (460' SETBACKS)		7400.00	9.82	19.02	3223102.38	1307943.65	40°10'33.398"N	104°42'05.659"W	polygon
CAMP 5 PAD SEC. 31 HARDLINES (460' SETBACKS)		7400.00	9.82	19.02	3223102.38	1307943.65	40°10'33.398"N	104°42'05.659"W	polygon

SURVEY PROGRAM - Ref Wellbore: CAMP 10N-30HZ PWB Ref Wellpath: CAMP 10N-30HZ (PERMIT) PWP				
Start MD [ft]	End MD [ft]	Positional Uncertainty Model	Log Name/Comment	Wellbore
25.00	13753.07	NaviTrak (Standard)		CAMP 10N-30HZ PWB



Planned Wellpath Report

CAMP 10N-30HZ (PERMIT) PWP

Page 6 of 6



REFERENCE WELLPATH IDENTIFICATION

Operator	ANADARKO E&P COMPANY LP	Slot	SLOT#09 CAMP 10N-30HZ (450'FSL & 1338'FEL, SEC.31)
Area	COLORADO	Well	CAMP 10N-30HZ
Field	WELD COUNTY (KERR MCGEE)	Wellbore	CAMP 10N-30HZ PWB
Facility	SEC.31-T3N-R65W		

WELLPATH COMMENTS

MD [ft]	Inclination [°]	Azimuth [°]	TVD [ft]	Comment
3951.86	5.050	290.000	3943.00	PARKMAN
4371.49	5.050	290.000	4361.00	SUSSEX
7107.01	53.138	356.637	7014.00	SHARON SPRINGS
7223.47	64.729	357.962	7074.00	NIOBRARA A
7284.26	70.784	358.551	7097.00	NIOBRARA B