

ANADARKO E&P COMPANY LP

Location: COLORADO Slot: SLOT#10 CAMP 24C-30HZ (450'FSL & 1301'FEL, SEC.31)
Field: WELD COUNTY (KERR MCGEE) Well: CAMP 24C-30HZ
Facility: SEC.31-T3N-R65W Wellbore: CAMP 24C-30HZ PWB

Plot reference wellpath is CAMP 24C-30HZ (PERMIT) PWP

True vertical depths are referenced to XTREME 6 (RKB)	Grid System: NAD83 / Lambert Colorado SP, Northern Zone (501), US feet
Measured depths are referenced to XTREME 6 (RKB)	North Reference: True north
XTREME 6 (RKB) to Mean Sea Level: 4974 feet	Scale: True distance
Mean Sea Level to Mud line (At Slot: SLOT#10 CAMP 24C-30HZ (450'FSL & 1301'FEL, SEC.31)): 0 feet	Depths are in feet
Coordinates are in feet referenced to Slot	Created by: wilsje02 on 1/30/2012

Location Information

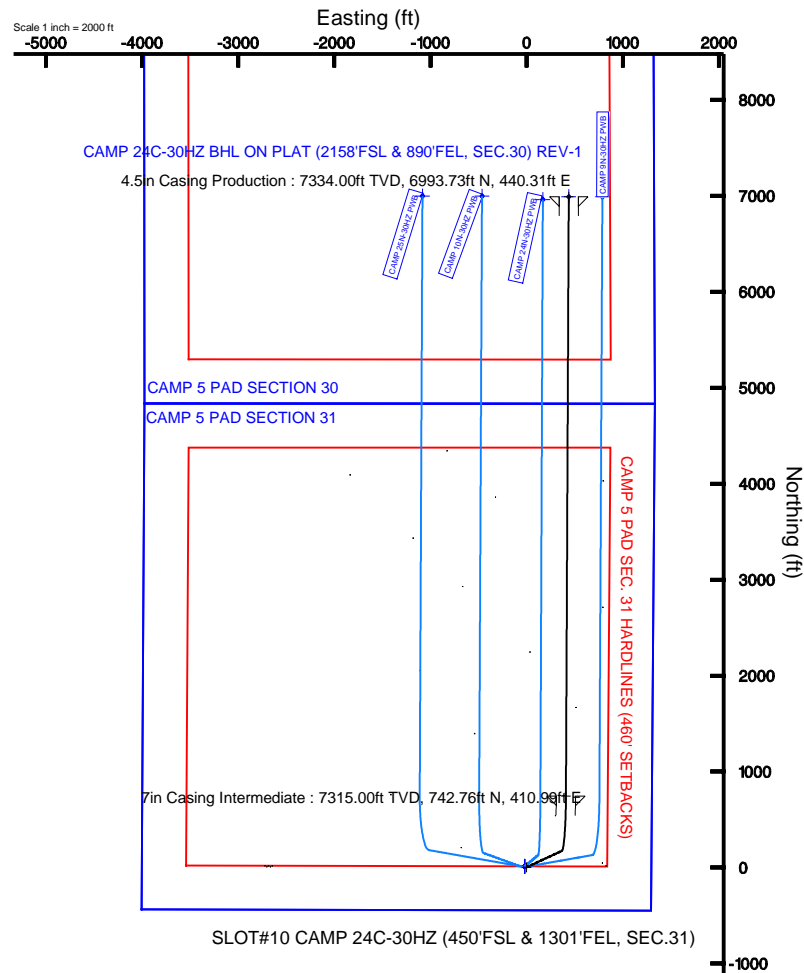
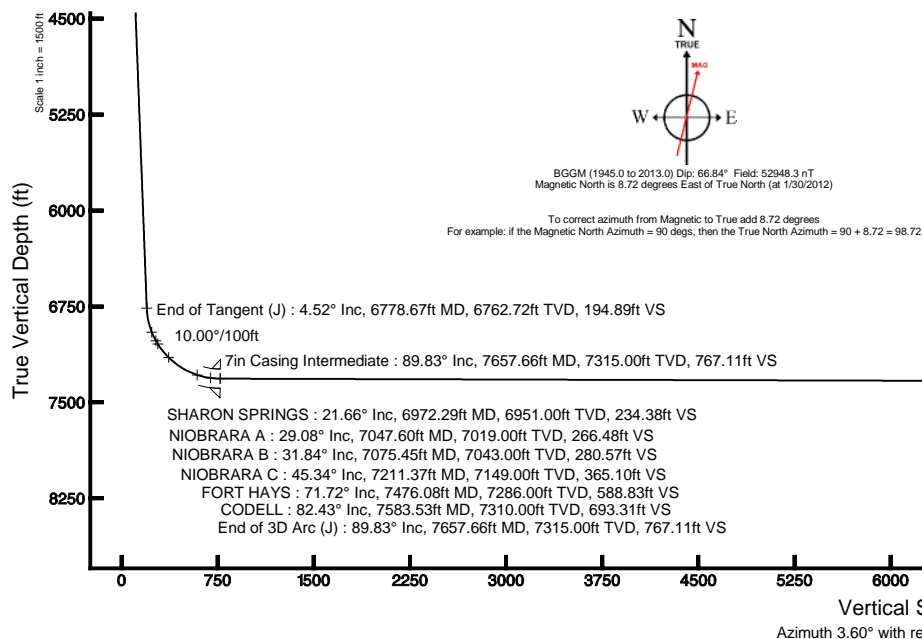
Facility Name			Grid East (US ft)	Grid North (US ft)	Latitude	Longitude
SEC.31-T3N-R65W			3220398.633	1307925.729	40°10'33.460"N	104°42'40.493"W
Slot	Local N (ft)	Local E (ft)	Grid East (US ft)	Grid North (US ft)	Latitude	Longitude
SLOT#10 CAMP 24C-30HZ (450'FSL & 1301'FEL, SEC.31)	-16.24	2722.32	3223120.871	1307933.700	40°10'33.298"N	104°42'05.422"W
XTREME 6 (RKB) to Mud line (At Slot: SLOT#10 CAMP 24C-30HZ (450'FSL & 1301'FEL, SEC.31))					4974ft	
Mean Sea Level to Mud line (At Slot: SLOT#10 CAMP 24C-30HZ (450'FSL & 1301'FEL, SEC.31))					0ft	
XTREME 6 (RKB) to Mean Sea Level					4974ft	

Well Profile Data

Design Comment	MD (ft)	Inc (°)	Az (°)	TVD (ft)	Local N (ft)	Local E (ft)	DLS (°/100ft)	VS (ft)
Tie On	25.00	0.000	65.000	25.00	0.00	0.00	0.00	0.00
End of Tangent	1500.00	0.000	65.000	1500.00	0.00	0.00	0.00	0.00
End of Build (J)	1726.00	4.520	65.000	1725.77	3.77	8.08	2.00	4.27
End of Tangent (J)	6778.67	4.520	65.000	6762.72	172.05	368.95	0.00	194.89
End of 3D Arc (J)	7657.66	89.826	0.269	7315.00	742.75	410.99	10.00	767.11
End of Tangent (J)	13908.73	89.826	0.269	7334.00	6993.73	440.31	0.00	7007.57

Targets

Name	MD (ft)	TVD (ft)	Local N (ft)	Local E (ft)	Grid East (US ft)	Grid North (US ft)	Latitude	Longitude
CAMP 5 PAD SECTION 30		0.00	10.12	-18.40	3223102.38	1307943.65	40°10'33.398"N	104°42'05.659"W
CAMP 5 PAD SECTION 31		0.00	10.12	-18.40	3223102.38	1307943.65	40°10'33.398"N	104°42'05.659"W
CAMP 24C-30HZ BHL ON PLAT (2158'FSL & 890'FEL, SEC.30) REV-1	13908.73	7334.00	6993.73	440.31	3223498.17	1314930.80	40°11'42.410"N	104°41'59.748"W
CAMP 5 PAD SEC. 30 HARDLINES (460' SETBACKS)	7400.00	10.12	-18.40	-18.40	3223102.38	1307943.65	40°10'33.398"N	104°42'05.659"W
CAMP 5 PAD SEC. 31 HARDLINES (460' SETBACKS)	7400.00	10.12	-18.40	-18.40	3223102.38	1307943.65	40°10'33.398"N	104°42'05.659"W





Planned Wellpath Report

CAMP 24C-30HZ (PERMIT) PWP

Page 1 of 6



REFERENCE WELLPATH IDENTIFICATION

Operator	ANADARKO E&P COMPANY LP	Slot	SLOT#10 CAMP 24C-30HZ (450'FSL & 1301'FEL, SEC.31)
Area	COLORADO	Well	CAMP 24C-30HZ
Field	WELD COUNTY (KERR MCGEE)	Wellbore	CAMP 24C-30HZ PWB
Facility	SEC.31-T3N-R65W		

REPORT SETUP INFORMATION

Projection System	NAD83 / Lambert Colorado SP, Northern Zone (501), US feet	Software System	WellArchitect® 3.0.2
North Reference	True	User	Wilsjef02
Scale	0.999958	Report Generated	1/30/2012 at 2:16:57 PM
Convergence at slot	0.52° East	Database/Source file	WellArchitectDB/CAMP_24C-30HZ_PWB.xml

WELLPATH LOCATION

	Local coordinates		Grid coordinates		Geographic coordinates	
	North[ft]	East[ft]	Easting[US ft]	Northing[US ft]	Latitude	Longitude
Slot Location	-16.24	2722.32	3223120.87	1307933.70	40°10'33.298"N	104°42'05.422"W
Facility Reference Pt			3220398.63	1307925.73	40°10'33.460"N	104°42'40.493"W
Field Reference Pt			3197771.84	1268891.29	40°04'09.600"N	104°47'36.000"W

WELLPATH DATUM

Calculation method	Minimum curvature	XTREME 6 (RKB) to Facility Vertical Datum	4974.00ft
Horizontal Reference Pt	Slot	XTREME 6 (RKB) to Mean Sea Level	4974.00ft
Vertical Reference Pt	XTREME 6 (RKB)	XTREME 6 (RKB) to Mud Line at Slot (SLOT#10 CAMP 24C-30HZ (450'FSL & 1301'FEL, SEC.31))	4974.00ft
MD Reference Pt	XTREME 6 (RKB)	Section Origin	N 0.00, E 0.00 ft
Field Vertical Reference	Mean Sea Level	Section Azimuth	3.60°



Planned Wellpath Report

CAMP 24C-30HZ (PERMIT) PWP

Page 2 of 6



REFERENCE WELLPATH IDENTIFICATION

Operator	ANADARKO E&P COMPANY LP	Slot	SLOT#10 CAMP 24C-30HZ (450'FSL & 1301'FEL, SEC.31)
Area	COLORADO	Well	CAMP 24C-30HZ
Field	WELD COUNTY (KERR MCGEE)	Wellbore	CAMP 24C-30HZ PWB
Facility	SEC.31-T3N-R65W		

WELLPATH DATA (153 stations) † = interpolated/extrapolated station

MD [ft]	Inclination [°]	Azimuth [°]	TVD [ft]	Vert Sect [ft]	North [ft]	East [ft]	Latitude	Longitude	DLS [°/100ft]	Comments
0.00†	0.000	65.000	0.00	0.00	0.00	0.00	40°10'33.298"N	104°42'05.422"W	0.00	
25.00	0.000	65.000	25.00	0.00	0.00	0.00	40°10'33.298"N	104°42'05.422"W	0.00	Tie On
125.00†	0.000	65.000	125.00	0.00	0.00	0.00	40°10'33.298"N	104°42'05.422"W	0.00	
225.00†	0.000	65.000	225.00	0.00	0.00	0.00	40°10'33.298"N	104°42'05.422"W	0.00	
325.00†	0.000	65.000	325.00	0.00	0.00	0.00	40°10'33.298"N	104°42'05.422"W	0.00	
425.00†	0.000	65.000	425.00	0.00	0.00	0.00	40°10'33.298"N	104°42'05.422"W	0.00	
525.00†	0.000	65.000	525.00	0.00	0.00	0.00	40°10'33.298"N	104°42'05.422"W	0.00	
625.00†	0.000	65.000	625.00	0.00	0.00	0.00	40°10'33.298"N	104°42'05.422"W	0.00	
725.00†	0.000	65.000	725.00	0.00	0.00	0.00	40°10'33.298"N	104°42'05.422"W	0.00	
825.00†	0.000	65.000	825.00	0.00	0.00	0.00	40°10'33.298"N	104°42'05.422"W	0.00	
925.00†	0.000	65.000	925.00	0.00	0.00	0.00	40°10'33.298"N	104°42'05.422"W	0.00	
1025.00†	0.000	65.000	1025.00	0.00	0.00	0.00	40°10'33.298"N	104°42'05.422"W	0.00	
1125.00†	0.000	65.000	1125.00	0.00	0.00	0.00	40°10'33.298"N	104°42'05.422"W	0.00	
1225.00†	0.000	65.000	1225.00	0.00	0.00	0.00	40°10'33.298"N	104°42'05.422"W	0.00	
1325.00†	0.000	65.000	1325.00	0.00	0.00	0.00	40°10'33.298"N	104°42'05.422"W	0.00	
1425.00†	0.000	65.000	1425.00	0.00	0.00	0.00	40°10'33.298"N	104°42'05.422"W	0.00	
1500.00	0.000	65.000	1500.00	0.00	0.00	0.00	40°10'33.298"N	104°42'05.422"W	0.00	End of Tangent
1525.00†	0.500	65.000	1525.00	0.05	0.05	0.10	40°10'33.298"N	104°42'05.421"W	2.00	
1625.00†	2.500	65.000	1624.96	1.31	1.15	2.47	40°10'33.309"N	104°42'05.390"W	2.00	
1725.00†	4.500	65.000	1724.77	4.23	3.73	8.00	40°10'33.335"N	104°42'05.319"W	2.00	
1726.00	4.520	65.000	1725.77	4.27	3.77	8.08	40°10'33.335"N	104°42'05.318"W	2.00	End of Build (J)
1825.00†	4.520	65.000	1824.46	8.00	7.06	15.15	40°10'33.368"N	104°42'05.227"W	0.00	
1925.00†	4.520	65.000	1924.15	11.77	10.39	22.29	40°10'33.401"N	104°42'05.135"W	0.00	
2025.00†	4.520	65.000	2023.84	15.55	13.72	29.43	40°10'33.434"N	104°42'05.043"W	0.00	
2125.00†	4.520	65.000	2123.52	19.32	17.05	36.57	40°10'33.467"N	104°42'04.951"W	0.00	
2225.00†	4.520	65.000	2223.21	23.09	20.38	43.72	40°10'33.499"N	104°42'04.859"W	0.00	
2325.00†	4.520	65.000	2322.90	26.86	23.72	50.86	40°10'33.532"N	104°42'04.767"W	0.00	
2425.00†	4.520	65.000	2422.59	30.64	27.05	58.00	40°10'33.565"N	104°42'04.675"W	0.00	
2525.00†	4.520	65.000	2522.28	34.41	30.38	65.14	40°10'33.598"N	104°42'04.583"W	0.00	
2625.00†	4.520	65.000	2621.97	38.18	33.71	72.28	40°10'33.631"N	104°42'04.491"W	0.00	
2725.00†	4.520	65.000	2721.66	41.95	37.04	79.43	40°10'33.664"N	104°42'04.399"W	0.00	
2825.00†	4.520	65.000	2821.35	45.73	40.37	86.57	40°10'33.697"N	104°42'04.307"W	0.00	
2925.00†	4.520	65.000	2921.04	49.50	43.70	93.71	40°10'33.730"N	104°42'04.215"W	0.00	
3025.00†	4.520	65.000	3020.73	53.27	47.03	100.85	40°10'33.763"N	104°42'04.123"W	0.00	
3125.00†	4.520	65.000	3120.41	57.05	50.36	108.00	40°10'33.796"N	104°42'04.031"W	0.00	
3225.00†	4.520	65.000	3220.10	60.82	53.69	115.14	40°10'33.829"N	104°42'03.939"W	0.00	
3325.00†	4.520	65.000	3319.79	64.59	57.02	122.28	40°10'33.861"N	104°42'03.847"W	0.00	
3425.00†	4.520	65.000	3419.48	68.36	60.35	129.42	40°10'33.894"N	104°42'03.755"W	0.00	
3525.00†	4.520	65.000	3519.17	72.14	63.68	136.57	40°10'33.927"N	104°42'03.663"W	0.00	
3625.00†	4.520	65.000	3618.86	75.91	67.01	143.71	40°10'33.960"N	104°42'03.571"W	0.00	
3725.00†	4.520	65.000	3718.55	79.68	70.34	150.85	40°10'33.993"N	104°42'03.479"W	0.00	
3825.00†	4.520	65.000	3818.24	83.45	73.67	157.99	40°10'34.026"N	104°42'03.387"W	0.00	
3925.00†	4.520	65.000	3917.93	87.23	77.00	165.14	40°10'34.059"N	104°42'03.295"W	0.00	
3949.15†	4.520	65.000	3942.00	88.14	77.81	166.86	40°10'34.067"N	104°42'03.272"W	0.00	PARKMAN
4025.00†	4.520	65.000	4017.62	91.00	80.33	172.28	40°10'34.092"N	104°42'03.203"W	0.00	
4125.00†	4.520	65.000	4117.30	94.77	83.66	179.42	40°10'34.125"N	104°42'03.111"W	0.00	
4225.00†	4.520	65.000	4216.99	98.55	87.00	186.56	40°10'34.158"N	104°42'03.019"W	0.00	
4325.00†	4.520	65.000	4316.68	102.32	90.33	193.70	40°10'34.191"N	104°42'02.927"W	0.00	
4348.39†	4.520	65.000	4340.00	103.20	91.10	195.38	40°10'34.198"N	104°42'02.905"W	0.00	SUSSEX
4425.00†	4.520	65.000	4416.37	106.09	93.66	200.85	40°10'34.224"N	104°42'02.835"W	0.00	
4525.00†	4.520	65.000	4516.06	109.86	96.99	207.99	40°10'34.256"N	104°42'02.743"W	0.00	
4625.00†	4.520	65.000	4615.75	113.64	100.32	215.13	40°10'34.289"N	104°42'02.650"W	0.00	
4725.00†	4.520	65.000	4715.44	117.41	103.65	222.27	40°10'34.322"N	104°42'02.558"W	0.00	
4825.00†	4.520	65.000	4815.13	121.18	106.98	229.42	40°10'34.355"N	104°42'02.466"W	0.00	
4925.00†	4.520	65.000	4914.82	124.95	110.31	236.56	40°10'34.388"N	104°42'02.374"W	0.00	
5025.00†	4.520	65.000	5014.51	128.73	113.64	243.70	40°10'34.421"N	104°42'02.282"W	0.00	
5125.00†	4.520	65.000	5114.19	132.50	116.97	250.84	40°10'34.454"N	104°42'02.190"W	0.00	
5225.00†	4.520	65.000	5213.88	136.27	120.30	257.99	40°10'34.487"N	104°42'02.098"W	0.00	
5325.00†	4.520	65.000	5313.57	140.05	123.63	265.13	40°10'34.520"N	104°42'02.006"W	0.00	
5425.00†	4.520	65.000	5413.26	143.82	126.96	272.27	40°10'34.553"N	104°42'01.914"W	0.00	



Planned Wellpath Report

CAMP 24C-30HZ (PERMIT) PWP

Page 3 of 6



REFERENCE WELLPATH IDENTIFICATION					
Operator	ANADARKO E&P COMPANY LP			Slot	SLOT#10 CAMP 24C-30HZ (450'FSL & 1301'FEL, SEC.31)
Area	COLORADO			Well	CAMP 24C-30HZ
Field	WELD COUNTY (KERR MCGEE)			Wellbore	CAMP 24C-30HZ PWB
Facility	SEC.31-T3N-R65W				

WELLPATH DATA (153 stations) † = interpolated/extrapolated station										
MD [ft]	Inclination [°]	Azimuth [°]	TVD [ft]	Vert Sect [ft]	North [ft]	East [ft]	Latitude	Longitude	DLS [°/100ft]	Comments
5525.00†	4.520	65.000	5512.95	147.59	130.29	279.41	40°10'34.586"N	104°42'01.822"W	0.00	
5625.00†	4.520	65.000	5612.64	151.36	133.62	286.56	40°10'34.618"N	104°42'01.730"W	0.00	
5725.00†	4.520	65.000	5712.33	155.14	136.95	293.70	40°10'34.651"N	104°42'01.638"W	0.00	
5825.00†	4.520	65.000	5812.02	158.91	140.28	300.84	40°10'34.684"N	104°42'01.546"W	0.00	
5925.00†	4.520	65.000	5911.71	162.68	143.61	307.98	40°10'34.717"N	104°42'01.454"W	0.00	
6025.00†	4.520	65.000	6011.40	166.45	146.94	315.12	40°10'34.750"N	104°42'01.362"W	0.00	
6125.00†	4.520	65.000	6111.08	170.23	150.28	322.27	40°10'34.783"N	104°42'01.270"W	0.00	
6225.00†	4.520	65.000	6210.77	174.00	153.61	329.41	40°10'34.816"N	104°42'01.178"W	0.00	
6325.00†	4.520	65.000	6310.46	177.77	156.94	336.55	40°10'34.849"N	104°42'01.086"W	0.00	
6425.00†	4.520	65.000	6410.15	181.55	160.27	343.69	40°10'34.882"N	104°42'00.994"W	0.00	
6525.00†	4.520	65.000	6509.84	185.32	163.60	350.84	40°10'34.915"N	104°42'00.902"W	0.00	
6625.00†	4.520	65.000	6609.53	189.09	166.93	357.98	40°10'34.948"N	104°42'00.810"W	0.00	
6725.00†	4.520	65.000	6709.22	192.86	170.26	365.12	40°10'34.980"N	104°42'00.718"W	0.00	
6778.67	4.520	65.000	6762.72	194.89	172.05	368.95	40°10'34.998"N	104°42'00.669"W	0.00	End of Tangent (J)
6825.00†	7.725	32.061	6808.79	198.50	175.46	372.26	40°10'35.032"N	104°42'00.626"W	10.00	
6925.00†	17.044	13.743	6906.39	218.89	195.44	379.33	40°10'35.229"N	104°42'00.535"W	10.00	
6972.29†	21.660	10.627	6951.00	234.38	210.76	382.59	40°10'35.381"N	104°42'00.493"W	10.00	SHARON SPRINGS
7025.00†	26.850	8.375	6999.04	255.91	232.11	386.12	40°10'35.592"N	104°42'00.448"W	10.00	
7047.60†	29.084	7.641	7019.00	266.48	242.61	387.59	40°10'35.695"N	104°42'00.429"W	10.00	NIOBRARA A
7075.45†	31.841	6.867	7043.00	280.57	256.61	389.37	40°10'35.834"N	104°42'00.406"W	10.00	NIOBRARA B
7125.00†	36.756	5.749	7083.93	308.45	284.36	392.42	40°10'36.108"N	104°42'00.366"W	10.00	
7211.37†	45.341	4.308	7149.00	365.10	340.81	397.33	40°10'36.666"N	104°42'00.303"W	10.00	NIOBRARA C
7225.00†	46.698	4.120	7158.47	374.91	350.59	398.05	40°10'36.762"N	104°42'00.294"W	10.00	
7325.00†	56.656	2.953	7220.40	453.26	428.79	402.83	40°10'37.535"N	104°42'00.232"W	10.00	
7425.00†	66.623	2.027	7267.84	541.13	516.60	406.61	40°10'38.403"N	104°42'00.184"W	10.00	
7476.08†	71.716	1.610	7286.00	588.83	564.30	408.12	40°10'38.874"N	104°42'00.164"W	10.00	FORT HAYS
7525.00†	76.595	1.233	7299.35	635.84	611.33	409.29	40°10'39.339"N	104°42'00.149"W	10.00	
7583.53†	82.432	0.801	7310.00	693.31	668.85	410.30	40°10'39.908"N	104°42'00.136"W	10.00	CODELL
7625.00†	86.569	0.502	7313.97	734.53	710.12	410.77	40°10'40.315"N	104°42'00.130"W	10.00	
7657.66	89.826	0.269	7315.00	767.11	742.75	410.99	40°10'40.638"N	104°42'00.127"W	10.00	End of 3D Arc (J)
7725.00†	89.826	0.269	7315.21	834.34	810.10	411.31	40°10'41.303"N	104°42'00.123"W	0.00	
7825.00†	89.826	0.269	7315.51	934.17	910.09	411.78	40°10'42.292"N	104°42'00.117"W	0.00	
7925.00†	89.826	0.269	7315.81	1034.00	1010.09	412.25	40°10'43.280"N	104°42'00.111"W	0.00	
8025.00†	89.826	0.269	7316.12	1133.83	1110.09	412.72	40°10'44.268"N	104°42'00.105"W	0.00	
8125.00†	89.826	0.269	7316.42	1233.66	1210.09	413.18	40°10'45.256"N	104°42'00.099"W	0.00	
8225.00†	89.826	0.269	7316.73	1333.49	1310.09	413.65	40°10'46.244"N	104°42'00.093"W	0.00	
8325.00†	89.826	0.269	7317.03	1433.32	1410.09	414.12	40°10'47.232"N	104°42'00.087"W	0.00	
8425.00†	89.826	0.269	7317.33	1533.15	1510.08	414.59	40°10'48.221"N	104°42'00.081"W	0.00	
8525.00†	89.826	0.269	7317.64	1632.98	1610.08	415.06	40°10'49.209"N	104°42'00.075"W	0.00	
8625.00†	89.826	0.269	7317.94	1732.81	1710.08	415.53	40°10'50.197"N	104°42'00.068"W	0.00	
8725.00†	89.826	0.269	7318.25	1832.64	1810.08	416.00	40°10'51.185"N	104°42'00.062"W	0.00	
8825.00†	89.826	0.269	7318.55	1932.47	1910.08	416.47	40°10'52.173"N	104°42'00.056"W	0.00	
8925.00†	89.826	0.269	7318.85	2032.30	2010.08	416.94	40°10'53.162"N	104°42'00.050"W	0.00	
9025.00†	89.826	0.269	7319.16	2132.13	2110.08	417.41	40°10'54.150"N	104°42'00.044"W	0.00	
9125.00†	89.826	0.269	7319.46	2231.96	2210.07	417.87	40°10'55.138"N	104°42'00.038"W	0.00	
9225.00†	89.826	0.269	7319.76	2331.79	2310.07	418.34	40°10'56.126"N	104°42'00.032"W	0.00	
9325.00†	89.826	0.269	7320.07	2431.62	2410.07	418.81	40°10'57.114"N	104°42'00.026"W	0.00	
9425.00†	89.826	0.269	7320.37	2531.45	2510.07	419.28	40°10'58.103"N	104°42'00.020"W	0.00	
9525.00†	89.826	0.269	7320.68	2631.28	2610.07	419.75	40°10'59.091"N	104°42'00.014"W	0.00	
9625.00†	89.826	0.269	7320.98	2731.11	2710.07	420.22	40°11'00.079"N	104°42'00.008"W	0.00	
9725.00†	89.826	0.269	7321.28	2830.95	2810.06	420.69	40°11'01.067"N	104°42'00.002"W	0.00	
9825.00†	89.826	0.269	7321.59	2930.78	2910.06	421.16	40°11'02.055"N	104°42'00.000"W	0.00	
9925.00†	89.826	0.269	7321.89	3030.61	3010.06	421.63	40°11'03.043"N	104°41'59.990"W	0.00	
10025.00†	89.826	0.269	7322.20	3130.44	3110.06	422.10	40°11'04.032"N	104°41'59.984"W	0.00	
10125.00†	89.826	0.269	7322.50	3230.27	3210.06	422.56	40°11'05.020"N	104°41'59.977"W	0.00	
10225.00†	89.826	0.269	7322.80	3330.10	3310.06	423.03	40°11'06.008"N	104°41'59.971"W	0.00	
10325.00†	89.826	0.269	7323.11	3429.93	3410.06	423.50	40°11'06.996"N	104°41'59.965"W	0.00	
10425.00†	89.826	0.269	7323.41	3529.76	3510.05	423.97	40°11'07.984"N	104°41'59.959"W	0.00	
10525.00†	89.826	0.269	7323.72	3629.59	3610.05	424.44	40°11'08.973"N	104°41'59.953"W	0.00	
10625.00†	89.826	0.269	7324.02	3729.42	3710.05	424.91	40°11'09.961"N	104°41'59.947"W	0.00	



Planned Wellpath Report

CAMP 24C-30HZ (PERMIT) PWP

Page 4 of 6



REFERENCE WELLPATH IDENTIFICATION

Operator	ANADARKO E&P COMPANY LP	Slot	SLOT#10 CAMP 24C-30HZ (450'FSL & 1301'FEL, SEC.31)
Area	COLORADO	Well	CAMP 24C-30HZ
Field	WELD COUNTY (KERR MCGEE)	Wellbore	CAMP 24C-30HZ PWB
Facility	SEC.31-T3N-R65W		

WELLPATH DATA (153 stations) † = interpolated/extrapolated station

MD [ft]	Inclination [°]	Azimuth [°]	TVD [ft]	Vert Sect [ft]	North [ft]	East [ft]	Latitude	Longitude	DLS [°/100ft]	Comments
10725.00†	89.826	0.269	7324.32	3829.25	3810.05	425.38	40°11'10.949"N	104°41'59.941"W	0.00	
10825.00†	89.826	0.269	7324.63	3929.08	3910.05	425.85	40°11'11.937"N	104°41'59.935"W	0.00	
10925.00†	89.826	0.269	7324.93	4028.91	4010.05	426.32	40°11'12.925"N	104°41'59.929"W	0.00	
11025.00†	89.826	0.269	7325.24	4128.74	4110.04	426.79	40°11'13.913"N	104°41'59.923"W	0.00	
11125.00†	89.826	0.269	7325.54	4228.57	4210.04	427.25	40°11'14.902"N	104°41'59.917"W	0.00	
11225.00†	89.826	0.269	7325.84	4328.40	4310.04	427.72	40°11'15.890"N	104°41'59.911"W	0.00	
11325.00†	89.826	0.269	7326.15	4428.23	4410.04	428.19	40°11'16.878"N	104°41'59.905"W	0.00	
11425.00†	89.826	0.269	7326.45	4528.06	4510.04	428.66	40°11'17.866"N	104°41'59.899"W	0.00	
11525.00†	89.826	0.269	7326.76	4627.89	4610.04	429.13	40°11'18.854"N	104°41'59.893"W	0.00	
11625.00†	89.826	0.269	7327.06	4727.72	4710.03	429.60	40°11'19.843"N	104°41'59.887"W	0.00	
11725.00†	89.826	0.269	7327.36	4827.55	4810.03	430.07	40°11'20.831"N	104°41'59.880"W	0.00	
11825.00†	89.826	0.269	7327.67	4927.38	4910.03	430.54	40°11'21.819"N	104°41'59.874"W	0.00	
11925.00†	89.826	0.269	7327.97	5027.21	5010.03	431.01	40°11'22.807"N	104°41'59.868"W	0.00	
12025.00†	89.826	0.269	7328.27	5127.04	5110.03	431.48	40°11'23.795"N	104°41'59.862"W	0.00	
12125.00†	89.826	0.269	7328.58	5226.87	5210.03	431.94	40°11'24.784"N	104°41'59.856"W	0.00	
12225.00†	89.826	0.269	7328.88	5326.70	5310.03	432.41	40°11'25.772"N	104°41'59.850"W	0.00	
12325.00†	89.826	0.269	7329.19	5426.53	5410.02	432.88	40°11'26.760"N	104°41'59.844"W	0.00	
12425.00†	89.826	0.269	7329.49	5526.36	5510.02	433.35	40°11'27.748"N	104°41'59.838"W	0.00	
12525.00†	89.826	0.269	7329.79	5626.19	5610.02	433.82	40°11'28.736"N	104°41'59.832"W	0.00	
12625.00†	89.826	0.269	7330.10	5726.02	5710.02	434.29	40°11'29.724"N	104°41'59.826"W	0.00	
12725.00†	89.826	0.269	7330.40	5825.85	5810.02	434.76	40°11'30.713"N	104°41'59.820"W	0.00	
12825.00†	89.826	0.269	7330.71	5925.68	5910.02	435.23	40°11'31.701"N	104°41'59.814"W	0.00	
12925.00†	89.826	0.269	7331.01	6025.52	6010.01	435.70	40°11'32.689"N	104°41'59.808"W	0.00	
13025.00†	89.826	0.269	7331.31	6125.35	6110.01	436.16	40°11'33.677"N	104°41'59.802"W	0.00	
13125.00†	89.826	0.269	7331.62	6225.18	6210.01	436.63	40°11'34.665"N	104°41'59.796"W	0.00	
13225.00†	89.826	0.269	7331.92	6325.01	6310.01	437.10	40°11'35.654"N	104°41'59.789"W	0.00	
13325.00†	89.826	0.269	7332.23	6424.84	6410.01	437.57	40°11'36.642"N	104°41'59.783"W	0.00	
13425.00†	89.826	0.269	7332.53	6524.67	6510.01	438.04	40°11'37.630"N	104°41'59.777"W	0.00	
13525.00†	89.826	0.269	7332.83	6624.50	6610.01	438.51	40°11'38.618"N	104°41'59.771"W	0.00	
13625.00†	89.826	0.269	7333.14	6724.33	6710.00	438.98	40°11'39.606"N	104°41'59.765"W	0.00	
13725.00†	89.826	0.269	7333.44	6824.16	6810.00	439.45	40°11'40.594"N	104°41'59.759"W	0.00	
13825.00†	89.826	0.269	7333.75	6923.99	6910.00	439.92	40°11'41.583"N	104°41'59.753"W	0.00	
13908.73	89.826	0.269	7334.00 ¹	7007.57	6993.73	440.31	40°11'42.410"N	104°41'59.748"W	0.00	End of Tangent (J)

HOLE & CASING SECTIONS - Ref Wellbore: CAMP 24C-30HZ PWB Ref Wellpath: CAMP 24C-30HZ (PERMIT) PWP

String/Diameter	Start MD [ft]	End MD [ft]	Interval [ft]	Start TVD [ft]	End TVD [ft]	Start N/S [ft]	Start E/W [ft]	End N/S [ft]	End E/W [ft]
13.5in Open Hole	25.00	800.00	775.00	25.00	800.00	0.00	0.00	0.00	0.00
9.625in Casing Surface	25.00	800.00	775.00	25.00	800.00	0.00	0.00	0.00	0.00
8.75in Open Hole	800.00	7657.66	6857.66	800.00	7315.00	0.00	0.00	742.76	410.99
7in Casing Intermediate	25.00	7657.66	7632.66	25.00	7315.00	0.00	0.00	742.76	410.99
6.125in Open Hole	7657.66	13908.73	6251.07	7315.00	7334.00	742.76	410.99	6993.73	440.31
4.5in Casing Production	25.00	13908.73	13883.73	25.00	7334.00	0.00	0.00	6993.73	440.31



Planned Wellpath Report

CAMP 24C-30HZ (PERMIT) PWP

Page 5 of 6



REFERENCE WELLPATH IDENTIFICATION			
Operator	ANADARKO E&P COMPANY LP	Slot	SLOT#10 CAMP 24C-30HZ (450'FSL & 1301'FEL, SEC.31)
Area	COLORADO	Well	CAMP 24C-30HZ
Field	WELD COUNTY (KERR MCGEE)	Wellbore	CAMP 24C-30HZ PWB
Facility	SEC.31-T3N-R65W		

TARGETS									
Name	MD [ft]	TVD [ft]	North [ft]	East [ft]	Grid East [US ft]	Grid North [US ft]	Latitude	Longitude	Shape
CAMP 5 PAD SECTION 30		0.00	10.12	-18.40	3223102.38	1307943.65	40°10'33.398"N	104°42'05.659"W	polygon
CAMP 5 PAD SECTION 31		0.00	10.12	-18.40	3223102.38	1307943.65	40°10'33.398"N	104°42'05.659"W	polygon
1) CAMP 24C-30HZ BHL ON PLAT (2158'FSL & 890'FEL, SEC.30) REV-1	13908.73	7334.00	6993.73	440.31	3223498.17	1314930.80	40°11'42.410"N	104°41'59.748"W	point
CAMP 5 PAD SEC. 30 HARDLINES (460' SETBACKS)		7400.00	10.12	-18.40	3223102.38	1307943.65	40°10'33.398"N	104°42'05.659"W	polygon
CAMP 5 PAD SEC. 31 HARDLINES (460' SETBACKS)		7400.00	10.12	-18.40	3223102.38	1307943.65	40°10'33.398"N	104°42'05.659"W	polygon

SURVEY PROGRAM - Ref Wellbore: CAMP 24C-30HZ PWB Ref Wellpath: CAMP 24C-30HZ (PERMIT) PWP				
Start MD [ft]	End MD [ft]	Positional Uncertainty Model	Log Name/Comment	Wellbore
25.00	13908.73	NaviTrak (Standard)		CAMP 24C-30HZ PWB



Planned Wellpath Report

CAMP 24C-30HZ (PERMIT) PWP

Page 6 of 6



REFERENCE WELLPATH IDENTIFICATION

Operator	ANADARKO E&P COMPANY LP	Slot	SLOT#10 CAMP 24C-30HZ (450'FSL & 1301'FEL, SEC.31)
Area	COLORADO	Well	CAMP 24C-30HZ
Field	WELD COUNTY (KERR MCGEE)	Wellbore	CAMP 24C-30HZ PWB
Facility	SEC.31-T3N-R65W		

WELLPATH COMMENTS

MD [ft]	Inclination [°]	Azimuth [°]	TVD [ft]	Comment
3949.15	4.520	65.000	3942.00	PARKMAN
4348.39	4.520	65.000	4340.00	SUSSEX
6972.29	21.660	10.627	6951.00	SHARON SPRINGS
7047.60	29.084	7.641	7019.00	NIOBRARA A
7075.45	31.841	6.867	7043.00	NIOBRARA B
7211.37	45.341	4.308	7149.00	NIOBRARA C
7476.08	71.716	1.610	7286.00	FORT HAYS
7583.53	82.432	0.801	7310.00	CODELL