

# ANADARKO E&P COMPANY LP

Location: COLORADO Slot: SLOT#07 CAMP 9N-30HZ (460'FSL & 1282'FEL, SEC.31)  
Field: WELD COUNTY (KERR MCGEE) Well: CAMP 9N-30HZ  
Facility: SEC.31-T3N-R65W Wellbore: CAMP 9N-30HZ PWB

Plot reference wellpath is CAMP 9N-30HZ (PERMIT) PWP

True vertical depths are referenced to XTREME 6 (RKB)	Grid System: NAD83 / Lambert Colorado SP, Northern Zone (501), US feet
Measured depths are referenced to XTREME 6 (RKB)	North Reference: True north
XTREME 6 (RKB) to Mean Sea Level: 4974 feet	Scale: True distance
Mean Sea Level to Mud line (At Slot: SLOT#07 CAMP 9N-30HZ (460'FSL & 1282'FEL, SEC.31)): 0 feet	Depths are in feet
Coordinates are in feet referenced to Slot	Created by: wilsje02 on 1/30/2012

## Location Information

Facility Name				Grid East (US ft)	Grid North (US ft)	Latitude	Longitude
SEC.31-T3N-R65W				3220398.633	1307925.729	40°10'33.460"N	104°42'40.493"W
Slot	Local N (ft)	Local E (ft)	Grid East (US ft)	Grid North (US ft)	Latitude	Longitude	
SLOT#07 CAMP 9N-30HZ (460'FSL & 1282'FEL, SEC.31)	-6.12	2741.34	3223139.795	1307943.990	40°10'33.398"N	104°42'05.177"W	
XTREME 6 (RKB) to Mud line (At Slot: SLOT#07 CAMP 9N-30HZ (460'FSL & 1282'FEL, SEC.31))						4974ft	
Mean Sea Level to Mud line (At Slot: SLOT#07 CAMP 9N-30HZ (460'FSL & 1282'FEL, SEC.31))						0ft	
XTREME 6 (RKB) to Mean Sea Level						4974ft	

## Well Profile Data

Design Comment	MD (ft)	Inc (°)	Az (°)	TVD (ft)	Local N (ft)	Local E (ft)	DLS (°/100ft)	VS (ft)
Tie On	25.00	0.000	80.000	25.00	0.00	0.00	0.00	0.00
End of Tangent	1100.00	0.000	80.000	1100.00	0.00	0.00	0.00	0.00
End of Build (J)	1464.50	7.290	80.000	1463.52	4.02	22.81	2.00	6.50
End of Tangent (J)	6621.14	7.290	80.000	6578.47	117.65	667.20	0.00	190.20
End of 3D Arc (J)	7511.78	90.364	0.282	7134.00	693.72	740.41	10.00	770.83
End of Tangent (J)	13800.06	90.364	0.282	7094.00	6981.79	771.36	0.00	7024.27

## Targets

Name	MD (ft)	TVD (ft)	Local N (ft)	Local E (ft)	Grid East (US ft)	Grid North (US ft)	Latitude	Longitude
CAMP 5 PAD SECTION 30		0.00	0.00	-37.41	3223102.38	1307943.65	40°10'33.398"N	104°42'05.659"W
CAMP 5 PAD SECTION 31		0.00	0.00	-37.41	3223102.38	1307943.65	40°10'33.398"N	104°42'05.659"W
CAMP 9N-30HZ BHL ON PLAT (2156'FSL & 540'FEL, SEC.30) REV-1	13800.06	7094.00	6981.79	771.36	3223848.22	1314932.14	40°11'42.392"N	104°41'55.237"W
CAMP 5 PAD SEC. 30 HARDLINES (460' SETBACKS)	7400.00	0.00	-37.41	-37.41	3223102.38	1307943.65	40°10'33.398"N	104°42'05.659"W
CAMP 5 PAD SEC. 31 HARDLINES (460' SETBACKS)	7400.00	0.00	-37.41	-37.41	3223102.38	1307943.65	40°10'33.398"N	104°42'05.659"W

Scale 1 inch = 1500 ft  
4500  
5250  
6000  
6750  
7500  
8250  
SUSSEX : 7.29° Inc, 4580.17ft MD, 4554.00ft TVD, 117.49ft VS

True Vertical Depth (ft)

End of Tangent (J) : 7.29° Inc, 6621.14ft MD, 6578.47ft TVD, 190.20ft VS

10.00°/100ft

7in Casing Intermediate : 90.36° Inc, 7511.78ft MD, 7134.00ft TVD, 770.83ft VS

SHARON SPRINGS : 51.95° Inc, 7124.02ft MD, 7011.00ft TVD, 411.54ft VS

NIOBRARA A : 64.80° Inc, 7253.95ft MD, 7079.00ft TVD, 521.89ft VS

NIOBRARA B : 71.76° Inc, 7324.26ft MD, 7105.00ft TVD, 587.07ft VS

End of 3D Arc (J) : 90.36° Inc, 7511.78ft MD, 7134.00ft TVD, 770.83ft VS

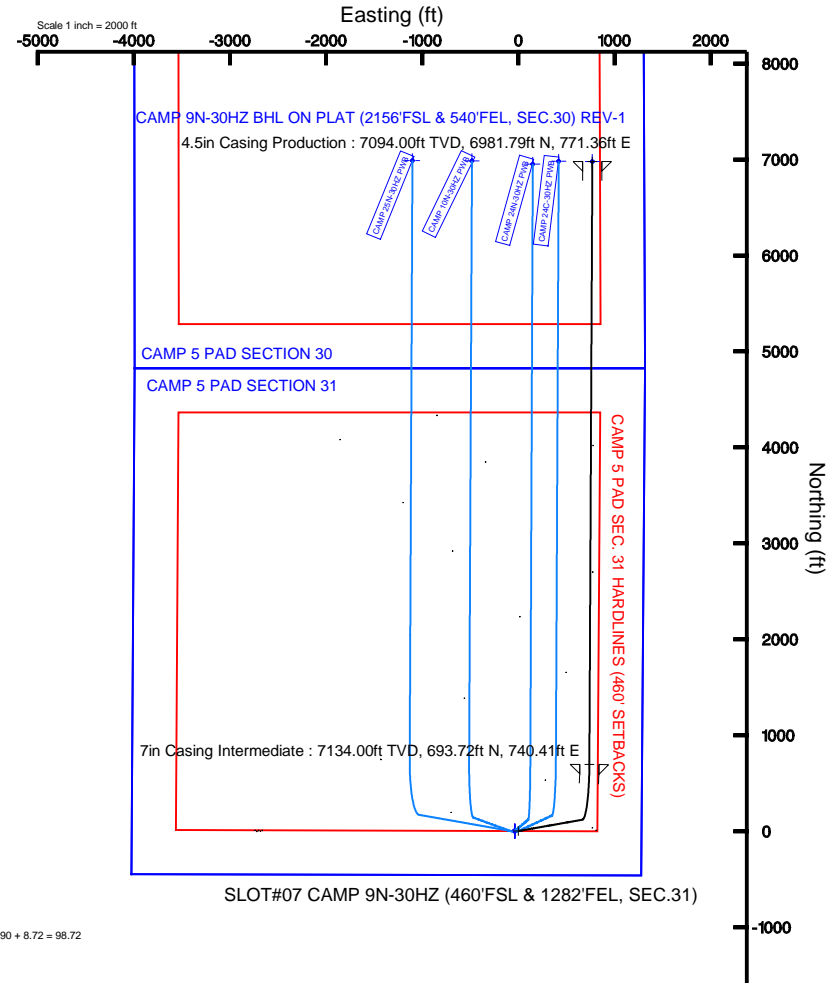


BGGM (1945.0 to 2013.0) Dip: 66.84° Field: 52948.3 nT  
Magnetic North is 8.72 degrees East of True North (at 1/30/2012)

To correct azimuth from Magnetic to True add 8.72 degrees  
For example: if the Magnetic North Azimuth = 90 degs, then the True North Azimuth = 90 + 8.72 = 98.72

Vertical Section (ft)

Azimuth 6.30° with reference 0.00 N, 0.00 E



SLOT#07 CAMP 9N-30HZ (460'FSL & 1282'FEL, SEC.31)

4.5in Casing Production : 90.36° Inc, 13800.06ft MD, 7094.00ft TVD, 7024.27ft VS

End of Tangent (J) : 90.36° Inc, 13800.06ft MD, 7094.00ft TVD, 7024.27ft VS

CAMP 9N-30HZ BHL ON PLAT (2156'FSL & 540'FEL, SEC.30) REV-1

Scale 1 inch = 1500 ft



# Planned Wellpath Report

CAMP 9N-30HZ (PERMIT) PWP

Page 1 of 6



REFERENCE WELLPATH IDENTIFICATION			
Operator	ANADARKO E&P COMPANY LP	Slot	SLOT#07 CAMP 9N-30HZ (460'FSL & 1282'FEL, SEC.31)
Area	COLORADO	Well	CAMP 9N-30HZ
Field	WELD COUNTY (KERR MCGEE)	Wellbore	CAMP 9N-30HZ PWB
Facility	SEC.31-T3N-R65W		

REPORT SETUP INFORMATION			
Projection System	NAD83 / Lambert Colorado SP, Northern Zone (501), US feet	Software System	WellArchitect® 3.0.2
North Reference	True	User	Wilsjef02
Scale	0.999958	Report Generated	1/30/2012 at 2:20:26 PM
Convergence at slot	0.52° East	Database/Source file	WellArchitectDB/CAMP_9N-30HZ_PWB.xml

WELLPATH LOCATION						
	Local coordinates		Grid coordinates		Geographic coordinates	
	North[ft]	East[ft]	Easting[US ft]	Northing[US ft]	Latitude	Longitude
Slot Location	-6.12	2741.34	3223139.80	1307943.99	40°10'33.398"N	104°42'05.177"W
Facility Reference Pt			3220398.63	1307925.73	40°10'33.460"N	104°42'40.493"W
Field Reference Pt			3197771.84	1268891.29	40°04'09.600"N	104°47'36.000"W

WELLPATH DATUM			
Calculation method	Minimum curvature	XTREME 6 (RKB) to Facility Vertical Datum	4974.00ft
Horizontal Reference Pt	Slot	XTREME 6 (RKB) to Mean Sea Level	4974.00ft
Vertical Reference Pt	XTREME 6 (RKB)	XTREME 6 (RKB) to Mud Line at Slot (SLOT#07 CAMP 9N-30HZ (460'FSL & 1282'FEL, SEC.31))	4974.00ft
MD Reference Pt	XTREME 6 (RKB)	Section Origin	N 0.00, E 0.00 ft
Field Vertical Reference	Mean Sea Level	Section Azimuth	6.30°



# Planned Wellpath Report

CAMP 9N-30HZ (PERMIT) PWP

Page 2 of 6



REFERENCE WELLPATH IDENTIFICATION									
Operator	ANADARKO E&P COMPANY LP					Slot	SLOT#07 CAMP 9N-30HZ (460'FSL & 1282'FEL, SEC.31)		
Area	COLORADO					Well	CAMP 9N-30HZ		
Field	WELD COUNTY (KERR MCGEE)					Wellbore	CAMP 9N-30HZ PWB		
Facility	SEC.31-T3N-R65W								

WELLPATH DATA (149 stations) † = interpolated/extrapolated station										
MD [ft]	Inclination [°]	Azimuth [°]	TVD [ft]	Vert Sect [ft]	North [ft]	East [ft]	Latitude	Longitude	DLS [°/100ft]	Comments
0.00†	0.000	80.000	0.00	0.00	0.00	0.00	40°10'33.398"N	104°42'05.177"W	0.00	
25.00	0.000	80.000	25.00	0.00	0.00	0.00	40°10'33.398"N	104°42'05.177"W	0.00	Tie On
125.00†	0.000	80.000	125.00	0.00	0.00	0.00	40°10'33.398"N	104°42'05.177"W	0.00	
225.00†	0.000	80.000	225.00	0.00	0.00	0.00	40°10'33.398"N	104°42'05.177"W	0.00	
325.00†	0.000	80.000	325.00	0.00	0.00	0.00	40°10'33.398"N	104°42'05.177"W	0.00	
425.00†	0.000	80.000	425.00	0.00	0.00	0.00	40°10'33.398"N	104°42'05.177"W	0.00	
525.00†	0.000	80.000	525.00	0.00	0.00	0.00	40°10'33.398"N	104°42'05.177"W	0.00	
625.00†	0.000	80.000	625.00	0.00	0.00	0.00	40°10'33.398"N	104°42'05.177"W	0.00	
725.00†	0.000	80.000	725.00	0.00	0.00	0.00	40°10'33.398"N	104°42'05.177"W	0.00	
825.00†	0.000	80.000	825.00	0.00	0.00	0.00	40°10'33.398"N	104°42'05.177"W	0.00	
925.00†	0.000	80.000	925.00	0.00	0.00	0.00	40°10'33.398"N	104°42'05.177"W	0.00	
1025.00†	0.000	80.000	1025.00	0.00	0.00	0.00	40°10'33.398"N	104°42'05.177"W	0.00	
1100.00	0.000	80.000	1100.00	0.00	0.00	0.00	40°10'33.398"N	104°42'05.177"W	0.00	End of Tangent
1125.00†	0.500	80.000	1125.00	0.03	0.02	0.11	40°10'33.398"N	104°42'05.176"W	2.00	
1225.00†	2.500	80.000	1224.96	0.77	0.47	2.69	40°10'33.403"N	104°42'05.142"W	2.00	
1325.00†	4.500	80.000	1324.77	2.48	1.53	8.70	40°10'33.413"N	104°42'05.065"W	2.00	
1425.00†	6.500	80.000	1424.30	5.17	3.20	18.14	40°10'33.430"N	104°42'04.943"W	2.00	
1464.50	7.290	80.000	1463.52	6.50	4.02	22.81	40°10'33.438"N	104°42'04.883"W	2.00	End of Build (J)
1525.00†	7.290	80.000	1523.53	8.66	5.35	30.37	40°10'33.451"N	104°42'04.786"W	0.00	
1625.00†	7.290	80.000	1622.72	12.22	7.56	42.86	40°10'33.473"N	104°42'04.625"W	0.00	
1725.00†	7.290	80.000	1721.91	15.78	9.76	55.36	40°10'33.494"N	104°42'04.464"W	0.00	
1825.00†	7.290	80.000	1821.10	19.34	11.96	67.85	40°10'33.516"N	104°42'04.303"W	0.00	
1925.00†	7.290	80.000	1920.29	22.91	14.17	80.35	40°10'33.538"N	104°42'04.142"W	0.00	
2025.00†	7.290	80.000	2019.49	26.47	16.37	92.85	40°10'33.560"N	104°42'03.981"W	0.00	
2125.00†	7.290	80.000	2118.68	30.03	18.57	105.34	40°10'33.582"N	104°42'03.820"W	0.00	
2225.00†	7.290	80.000	2217.87	33.59	20.78	117.84	40°10'33.603"N	104°42'03.659"W	0.00	
2325.00†	7.290	80.000	2317.06	37.16	22.98	130.34	40°10'33.625"N	104°42'03.498"W	0.00	
2425.00†	7.290	80.000	2416.25	40.72	25.19	142.83	40°10'33.647"N	104°42'03.337"W	0.00	
2525.00†	7.290	80.000	2515.44	44.28	27.39	155.33	40°10'33.669"N	104°42'03.176"W	0.00	
2625.00†	7.290	80.000	2614.64	47.84	29.59	167.83	40°10'33.690"N	104°42'03.015"W	0.00	
2725.00†	7.290	80.000	2713.83	51.41	31.80	180.32	40°10'33.712"N	104°42'02.854"W	0.00	
2825.00†	7.290	80.000	2813.02	54.97	34.00	192.82	40°10'33.734"N	104°42'02.693"W	0.00	
2925.00†	7.290	80.000	2912.21	58.53	36.20	205.31	40°10'33.756"N	104°42'02.532"W	0.00	
3025.00†	7.290	80.000	3011.40	62.09	38.41	217.81	40°10'33.778"N	104°42'02.371"W	0.00	
3125.00†	7.290	80.000	3110.59	65.65	40.61	230.31	40°10'33.799"N	104°42'02.210"W	0.00	
3225.00†	7.290	80.000	3209.79	69.22	42.81	242.80	40°10'33.821"N	104°42'02.049"W	0.00	
3325.00†	7.290	80.000	3308.98	72.78	45.02	255.30	40°10'33.843"N	104°42'01.888"W	0.00	
3425.00†	7.290	80.000	3408.17	76.34	47.22	267.80	40°10'33.865"N	104°42'01.727"W	0.00	
3525.00†	7.290	80.000	3507.36	79.90	49.42	280.29	40°10'33.886"N	104°42'01.566"W	0.00	
3625.00†	7.290	80.000	3606.55	83.47	51.63	292.79	40°10'33.908"N	104°42'01.405"W	0.00	
3725.00†	7.290	80.000	3705.74	87.03	53.83	305.29	40°10'33.930"N	104°42'01.244"W	0.00	
3825.00†	7.290	80.000	3804.94	90.59	56.03	317.78	40°10'33.952"N	104°42'01.083"W	0.00	
3925.00†	7.290	80.000	3904.13	94.15	58.24	330.28	40°10'33.973"N	104°42'00.922"W	0.00	
3953.10†	7.290	80.000	3932.00	95.15	58.86	333.79	40°10'33.980"N	104°42'00.877"W	0.00	PARKMAN
4025.00†	7.290	80.000	4003.32	97.72	60.44	342.78	40°10'33.995"N	104°42'00.761"W	0.00	
4125.00†	7.290	80.000	4102.51	101.28	62.64	355.27	40°10'34.017"N	104°42'00.600"W	0.00	
4225.00†	7.290	80.000	4201.70	104.84	64.85	367.77	40°10'34.039"N	104°42'00.439"W	0.00	
4325.00†	7.290	80.000	4300.89	108.40	67.05	380.26	40°10'34.061"N	104°42'00.278"W	0.00	
4425.00†	7.290	80.000	4400.09	111.97	69.25	392.76	40°10'34.082"N	104°42'00.117"W	0.00	
4525.00†	7.290	80.000	4499.28	115.53	71.46	405.26	40°10'34.104"N	104°41'59.956"W	0.00	
4580.17†	7.290	80.000	4554.00	117.49	72.67	412.15	40°10'34.116"N	104°41'59.867"W	0.00	SUSSEX
4625.00†	7.290	80.000	4598.47	119.09	73.66	417.75	40°10'34.126"N	104°41'59.795"W	0.00	
4725.00†	7.290	80.000	4697.66	122.65	75.86	430.25	40°10'34.148"N	104°41'59.634"W	0.00	
4825.00†	7.290	80.000	4796.85	126.22	78.07	442.75	40°10'34.169"N	104°41'59.473"W	0.00	
4925.00†	7.290	80.000	4896.04	129.78	80.27	455.24	40°10'34.191"N	104°41'59.312"W	0.00	
5025.00†	7.290	80.000	4995.24	133.34	82.47	467.74	40°10'34.213"N	104°41'59.151"W	0.00	
5125.00†	7.290	80.000	5094.43	136.90	84.68	480.24	40°10'34.235"N	104°41'58.990"W	0.00	
5225.00†	7.290	80.000	5193.62	140.46	86.88	492.73	40°10'34.257"N	104°41'58.829"W	0.00	
5325.00†	7.290	80.000	5292.81	144.03	89.09	505.23	40°10'34.278"N	104°41'58.668"W	0.00	
5425.00†	7.290	80.000	5392.00	147.59	91.29	517.72	40°10'34.300"N	104°41'58.507"W	0.00	



# Planned Wellpath Report

CAMP 9N-30HZ (PERMIT) PWP

Page 3 of 6



## REFERENCE WELLPATH IDENTIFICATION

Operator	ANADARKO E&P COMPANY LP	Slot	SLOT#07 CAMP 9N-30HZ (460'FSL & 1282'FEL, SEC.31)
Area	COLORADO	Well	CAMP 9N-30HZ
Field	WELD COUNTY (KERR MCGEE)	Wellbore	CAMP 9N-30HZ PWB
Facility	SEC.31-T3N-R65W		

## WELLPATH DATA (149 stations) † = interpolated/extrapolated station

MD [ft]	Inclination [°]	Azimuth [°]	TVD [ft]	Vert Sect [ft]	North [ft]	East [ft]	Latitude	Longitude	DLS [°/100ft]	Comments
5525.00†	7.290	80.000	5491.19	151.15	93.49	530.22	40°10'34.322"N	104°41'58.346"W	0.00	
5625.00†	7.290	80.000	5590.39	154.71	95.70	542.72	40°10'34.344"N	104°41'58.185"W	0.00	
5725.00†	7.290	80.000	5689.58	158.28	97.90	555.21	40°10'34.365"N	104°41'58.024"W	0.00	
5825.00†	7.290	80.000	5788.77	161.84	100.10	567.71	40°10'34.387"N	104°41'57.863"W	0.00	
5925.00†	7.290	80.000	5887.96	165.40	102.31	580.21	40°10'34.409"N	104°41'57.702"W	0.00	
6025.00†	7.290	80.000	5987.15	168.96	104.51	592.70	40°10'34.431"N	104°41'57.541"W	0.00	
6125.00†	7.290	80.000	6086.34	172.53	106.71	605.20	40°10'34.452"N	104°41'57.380"W	0.00	
6225.00†	7.290	80.000	6185.54	176.09	108.92	617.70	40°10'34.474"N	104°41'57.219"W	0.00	
6325.00†	7.290	80.000	6284.73	179.65	111.12	630.19	40°10'34.496"N	104°41'57.058"W	0.00	
6425.00†	7.290	80.000	6383.92	183.21	113.32	642.69	40°10'34.518"N	104°41'56.897"W	0.00	
6525.00†	7.290	80.000	6483.11	186.78	115.53	655.18	40°10'34.540"N	104°41'56.736"W	0.00	
6621.14	7.290	80.000	6578.47	190.20	117.65	667.20	40°10'34.560"N	104°41'56.582"W	0.00	End of Tangent (J)
6625.00†	7.368	77.037	6582.30	190.35	117.74	667.68	40°10'34.561"N	104°41'56.575"W	10.00	
6725.00†	13.689	31.440	6680.72	203.21	129.31	680.13	40°10'34.676"N	104°41'56.415"W	10.00	
6825.00†	22.790	17.757	6775.64	232.98	157.92	692.24	40°10'34.958"N	104°41'56.259"W	10.00	
6925.00†	32.409	11.762	6864.17	278.76	202.71	703.64	40°10'35.401"N	104°41'56.112"W	10.00	
7025.00†	42.191	8.309	6943.63	339.15	262.33	713.98	40°10'35.990"N	104°41'55.979"W	10.00	
7124.02†	51.946	5.982	7011.00	411.54	334.18	722.87	40°10'36.700"N	104°41'56.625"W	10.00	SHARON SPRINGS
7125.00†	52.043	5.962	7011.60	412.31	334.95	722.95	40°10'36.708"N	104°41'55.863"W	10.00	
7225.00†	61.931	4.176	7066.02	496.04	418.37	730.28	40°10'37.532"N	104°41'55.769"W	10.00	
7253.95†	64.798	3.723	7079.00	521.89	444.19	732.06	40°10'37.787"N	104°41'55.746"W	10.00	NIORARA A
7324.26†	71.765	2.704	7105.00	587.07	509.36	735.71	40°10'38.431"N	104°41'55.699"W	10.00	NIORARA B
7325.00†	71.838	2.694	7105.23	587.77	510.07	735.74	40°10'38.438"N	104°41'55.698"W	10.00	
7425.00†	81.755	1.373	7128.05	684.73	607.24	739.17	40°10'39.399"N	104°41'55.654"W	10.00	
7511.78	90.364	0.282	7134.00	770.83	693.72	740.41	40°10'40.253"N	104°41'55.638"W	10.00	End of 3D Arc (J)
7525.00†	90.364	0.282	7133.92	783.98	706.94	740.48	40°10'40.384"N	104°41'55.637"W	0.00	
7625.00†	90.364	0.282	7133.28	883.42	806.94	740.97	40°10'41.372"N	104°41'55.631"W	0.00	
7725.00†	90.364	0.282	7132.65	982.87	906.93	741.46	40°10'42.360"N	104°41'55.625"W	0.00	
7825.00†	90.364	0.282	7132.01	1082.32	1006.93	741.95	40°10'43.348"N	104°41'55.618"W	0.00	
7925.00†	90.364	0.282	7131.37	1181.76	1106.93	742.44	40°10'44.337"N	104°41'55.612"W	0.00	
8025.00†	90.364	0.282	7130.74	1281.21	1206.92	742.94	40°10'45.325"N	104°41'55.605"W	0.00	
8125.00†	90.364	0.282	7130.10	1380.65	1306.92	743.43	40°10'46.313"N	104°41'55.599"W	0.00	
8225.00†	90.364	0.282	7129.47	1480.10	1406.92	743.92	40°10'47.301"N	104°41'55.593"W	0.00	
8325.00†	90.364	0.282	7128.83	1579.55	1506.91	744.41	40°10'48.289"N	104°41'55.586"W	0.00	
8425.00†	90.364	0.282	7128.19	1678.99	1606.91	744.90	40°10'49.277"N	104°41'55.580"W	0.00	
8525.00†	90.364	0.282	7127.56	1778.44	1706.91	745.40	40°10'50.266"N	104°41'55.574"W	0.00	
8625.00†	90.364	0.282	7126.92	1877.89	1806.90	745.89	40°10'51.254"N	104°41'55.567"W	0.00	
8725.00†	90.364	0.282	7126.29	1977.33	1906.90	746.38	40°10'52.242"N	104°41'55.561"W	0.00	
8825.00†	90.364	0.282	7125.65	2076.78	2006.90	746.87	40°10'53.230"N	104°41'55.554"W	0.00	
8925.00†	90.364	0.282	7125.01	2176.22	2106.89	747.37	40°10'54.218"N	104°41'55.548"W	0.00	
9025.00†	90.364	0.282	7124.38	2275.67	2206.89	747.86	40°10'55.206"N	104°41'55.542"W	0.00	
9125.00†	90.364	0.282	7123.74	2375.12	2306.89	748.35	40°10'56.195"N	104°41'55.535"W	0.00	
9225.00†	90.364	0.282	7123.10	2474.56	2406.89	748.84	40°10'57.183"N	104°41'55.529"W	0.00	
9325.00†	90.364	0.282	7122.47	2574.01	2506.88	749.33	40°10'58.171"N	104°41'55.523"W	0.00	
9425.00†	90.364	0.282	7121.83	2673.45	2606.88	749.83	40°10'59.159"N	104°41'55.516"W	0.00	
9525.00†	90.364	0.282	7121.20	2772.90	2706.88	750.32	40°11'00.147"N	104°41'55.510"W	0.00	
9625.00†	90.364	0.282	7120.56	2872.35	2806.87	750.81	40°11'01.135"N	104°41'55.503"W	0.00	
9725.00†	90.364	0.282	7119.92	2971.79	2906.87	751.30	40°11'02.124"N	104°41'55.497"W	0.00	
9825.00†	90.364	0.282	7119.29	3071.24	3006.87	751.79	40°11'03.112"N	104°41'55.491"W	0.00	
9925.00†	90.364	0.282	7118.65	3170.68	3106.86	752.29	40°11'04.100"N	104°41'55.484"W	0.00	
10025.00†	90.364	0.282	7118.02	3270.13	3206.86	752.78	40°11'05.088"N	104°41'55.478"W	0.00	
10125.00†	90.364	0.282	7117.38	3369.58	3306.86	753.27	40°11'06.076"N	104°41'55.471"W	0.00	
10225.00†	90.364	0.282	7116.74	3469.02	3406.85	753.76	40°11'07.064"N	104°41'55.465"W	0.00	
10325.00†	90.364	0.282	7116.11	3568.47	3506.85	754.26	40°11'08.053"N	104°41'55.459"W	0.00	
10425.00†	90.364	0.282	7115.47	3667.91	3606.85	754.75	40°11'09.041"N	104°41'55.452"W	0.00	
10525.00†	90.364	0.282	7114.83	3767.36	3706.84	755.24	40°11'10.029"N	104°41'55.446"W	0.00	
10625.00†	90.364	0.282	7114.20	3866.81	3806.84	755.73	40°11'11.017"N	104°41'55.440"W	0.00	
10725.00†	90.364	0.282	7113.56	3966.25	3906.84	756.22	40°11'12.005"N	104°41'55.433"W	0.00	
10825.00†	90.364	0.282	7112.93	4065.70	4006.83	756.72	40°11'12.993"N	104°41'55.427"W	0.00	
10925.00†	90.364	0.282	7112.29	4165.14	4106.83	757.21	40°11'13.982"N	104°41'55.420"W	0.00	



# Planned Wellpath Report

CAMP 9N-30HZ (PERMIT) PWP

Page 4 of 6



REFERENCE WELLPATH IDENTIFICATION			
Operator	ANADARKO E&P COMPANY LP	Slot	SLOT#07 CAMP 9N-30HZ (460'FSL & 1282'FEL, SEC.31)
Area	COLORADO	Well	CAMP 9N-30HZ
Field	WELD COUNTY (KERR MCGEE)	Wellbore	CAMP 9N-30HZ PWB
Facility	SEC.31-T3N-R65W		

WELLPATH DATA (149 stations) † = interpolated/extrapolated station										
MD [ft]	Inclination [°]	Azimuth [°]	TVD [ft]	Vert Sect [ft]	North [ft]	East [ft]	Latitude	Longitude	DLS [°/100ft]	Comments
11025.00†	90.364	0.282	7111.65	4264.59	4206.83	757.70	40°11'14.970"N	104°41'55.414"W	0.00	
11125.00†	90.364	0.282	7111.02	4364.04	4306.82	758.19	40°11'15.958"N	104°41'55.408"W	0.00	
11225.00†	90.364	0.282	7110.38	4463.48	4406.82	758.68	40°11'16.946"N	104°41'55.401"W	0.00	
11325.00†	90.364	0.282	7109.75	4562.93	4506.82	759.18	40°11'17.934"N	104°41'55.395"W	0.00	
11425.00†	90.364	0.282	7109.11	4662.37	4606.81	759.67	40°11'18.922"N	104°41'55.389"W	0.00	
11525.00†	90.364	0.282	7108.47	4761.82	4706.81	760.16	40°11'19.911"N	104°41'55.382"W	0.00	
11625.00†	90.364	0.282	7107.84	4861.27	4806.81	760.65	40°11'20.899"N	104°41'55.376"W	0.00	
11725.00†	90.364	0.282	7107.20	4960.71	4906.80	761.14	40°11'21.887"N	104°41'55.369"W	0.00	
11825.00†	90.364	0.282	7106.56	5060.16	5006.80	761.64	40°11'22.875"N	104°41'55.363"W	0.00	
11925.00†	90.364	0.282	7105.93	5159.60	5106.80	762.13	40°11'23.863"N	104°41'55.357"W	0.00	
12025.00†	90.364	0.282	7105.29	5259.05	5206.79	762.62	40°11'24.851"N	104°41'55.350"W	0.00	
12125.00†	90.364	0.282	7104.66	5358.50	5306.79	763.11	40°11'25.840"N	104°41'55.344"W	0.00	
12225.00†	90.364	0.282	7104.02	5457.94	5406.79	763.61	40°11'26.828"N	104°41'55.338"W	0.00	
12325.00†	90.364	0.282	7103.38	5557.39	5506.78	764.10	40°11'27.816"N	104°41'55.331"W	0.00	
12425.00†	90.364	0.282	7102.75	5656.84	5606.78	764.59	40°11'28.804"N	104°41'55.325"W	0.00	
12525.00†	90.364	0.282	7102.11	5756.28	5706.78	765.08	40°11'29.792"N	104°41'55.318"W	0.00	
12625.00†	90.364	0.282	7101.48	5855.73	5806.78	765.57	40°11'30.780"N	104°41'55.312"W	0.00	
12725.00†	90.364	0.282	7100.84	5955.17	5906.77	766.07	40°11'31.769"N	104°41'55.306"W	0.00	
12825.00†	90.364	0.282	7100.20	6054.62	6006.77	766.56	40°11'32.757"N	104°41'55.299"W	0.00	
12925.00†	90.364	0.282	7099.57	6154.07	6106.77	767.05	40°11'33.745"N	104°41'55.293"W	0.00	
13025.00†	90.364	0.282	7098.93	6253.51	6206.76	767.54	40°11'34.733"N	104°41'55.286"W	0.00	
13125.00†	90.364	0.282	7098.29	6352.96	6306.76	768.03	40°11'35.721"N	104°41'55.280"W	0.00	
13225.00†	90.364	0.282	7097.66	6452.40	6406.76	768.53	40°11'36.709"N	104°41'55.274"W	0.00	
13325.00†	90.364	0.282	7097.02	6551.85	6506.75	769.02	40°11'37.698"N	104°41'55.267"W	0.00	
13425.00†	90.364	0.282	7096.39	6651.30	6606.75	769.51	40°11'38.686"N	104°41'55.261"W	0.00	
13525.00†	90.364	0.282	7095.75	6750.74	6706.75	770.00	40°11'39.674"N	104°41'55.255"W	0.00	
13625.00†	90.364	0.282	7095.11	6850.19	6806.74	770.49	40°11'40.662"N	104°41'55.248"W	0.00	
13725.00†	90.364	0.282	7094.48	6949.63	6906.74	770.99	40°11'41.650"N	104°41'55.242"W	0.00	
13800.06	90.364	0.282	7094.00 <sup>1</sup>	7024.27	6981.79	771.36	40°11'42.392"N	104°41'55.237"W	0.00	End of Tangent (J)

HOLE & CASING SECTIONS - Ref Wellbore: CAMP 9N-30HZ PWB Ref Wellpath: CAMP 9N-30HZ (PERMIT) PWP									
String/Diameter	Start MD [ft]	End MD [ft]	Interval [ft]	Start TVD [ft]	End TVD [ft]	Start N/S [ft]	Start E/W [ft]	End N/S [ft]	End E/W [ft]
13.5in Open Hole	25.00	800.00	775.00	25.00	800.00	0.00	0.00	0.00	0.00
9.625in Casing Surface	25.00	800.00	775.00	25.00	800.00	0.00	0.00	0.00	0.00
8.75in Open Hole	800.00	7511.78	6711.78	800.00	7134.00	0.00	0.00	693.72	740.41
7in Casing Intermediate	25.00	7511.78	7486.78	25.00	7134.00	0.00	0.00	693.72	740.41
6.125in Open Hole	7511.78	13800.06	6288.28	7134.00	7094.00	693.72	740.41	6981.79	771.36
4.5in Casing Production	25.00	13800.06	13775.06	25.00	7094.00	0.00	0.00	6981.79	771.36



# Planned Wellpath Report

CAMP 9N-30HZ (PERMIT) PWP

Page 5 of 6



REFERENCE WELLPATH IDENTIFICATION			
Operator	ANADARKO E&P COMPANY LP	Slot	SLOT#07 CAMP 9N-30HZ (460'FSL & 1282'FEL, SEC.31)
Area	COLORADO	Well	CAMP 9N-30HZ
Field	WELD COUNTY (KERR MCGEE)	Wellbore	CAMP 9N-30HZ PWB
Facility	SEC.31-T3N-R65W		

TARGETS									
Name	MD [ft]	TVD [ft]	North [ft]	East [ft]	Grid East [US ft]	Grid North [US ft]	Latitude	Longitude	Shape
CAMP 5 PAD SECTION 30		0.00	0.00	-37.41	3223102.38	1307943.65	40°10'33.398"N	104°42'05.659"W	polygon
CAMP 5 PAD SECTION 31		0.00	0.00	-37.41	3223102.38	1307943.65	40°10'33.398"N	104°42'05.659"W	polygon
1) CAMP 9N-30HZ BHL ON PLAT (2156'FSL & 540'FEL, SEC.30) REV-1	13800.06	7094.00	6981.79	771.36	3223848.22	1314932.14	40°11'42.392"N	104°41'55.237"W	point
CAMP 5 PAD SEC. 30 HARDLINES (460' SETBACKS)		7400.00	0.00	-37.41	3223102.38	1307943.65	40°10'33.398"N	104°42'05.659"W	polygon
CAMP 5 PAD SEC. 31 HARDLINES (460' SETBACKS)		7400.00	0.00	-37.41	3223102.38	1307943.65	40°10'33.398"N	104°42'05.659"W	polygon

SURVEY PROGRAM - Ref Wellbore: CAMP 9N-30HZ PWB Ref Wellpath: CAMP 9N-30HZ (PERMIT) PWP				
Start MD [ft]	End MD [ft]	Positional Uncertainty Model	Log Name/Comment	Wellbore
25.00	13800.06	NaviTrak (Standard)		CAMP 9N-30HZ PWB



# Planned Wellpath Report

CAMP 9N-30HZ (PERMIT) PWP

Page 6 of 6



## REFERENCE WELLPATH IDENTIFICATION

Operator	ANADARKO E&P COMPANY LP	Slot	SLOT#07 CAMP 9N-30HZ (460'FSL & 1282'FEL, SEC.31)
Area	COLORADO	Well	CAMP 9N-30HZ
Field	WELD COUNTY (KERR MCGEE)	Wellbore	CAMP 9N-30HZ PWB
Facility	SEC.31-T3N-R65W		

## WELLPATH COMMENTS

MD [ft]	Inclination [°]	Azimuth [°]	TVD [ft]	Comment
3953.10	7.290	80.000	3932.00	PARKMAN
4580.17	7.290	80.000	4554.00	SUSSEX
7124.02	51.946	5.982	7011.00	SHARON SPRINGS
7253.95	64.798	3.723	7079.00	NIOBRARA A
7324.26	71.765	2.704	7105.00	NIOBRARA B