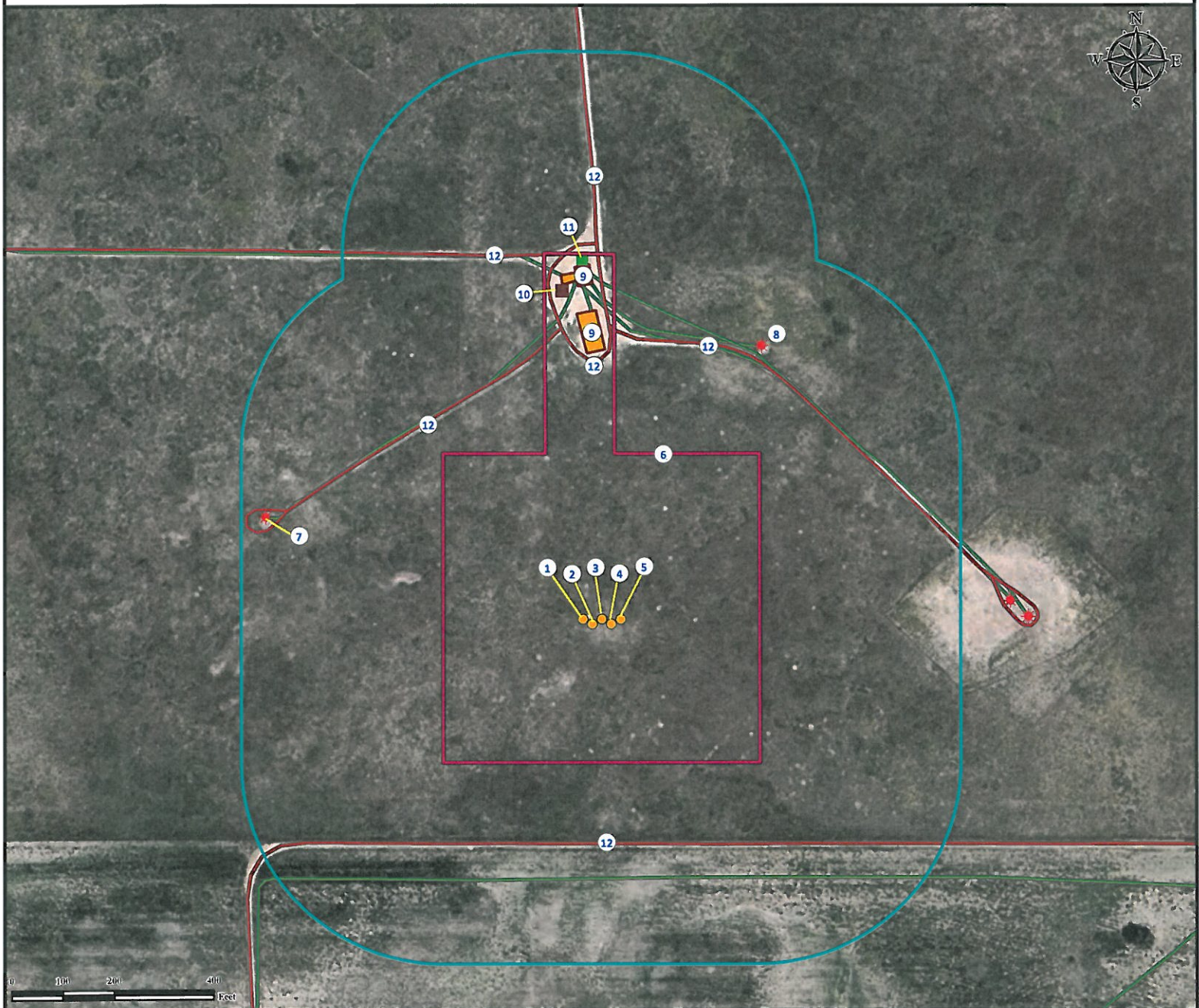


Location Drawing

CAMP 24N-30HZ

Horizontal Multi Well Pad

SW¼SE¼ & SE¼SE¼ SECTION 31, TOWNSHIP 3 NORTH, RANGE 65 WEST OF THE 6TH PRINCIPAL MERIDIAN



- | | |
|----------------------------------|--|
| 1. Proposed Well CAMP 25N-30HZ. | 7. Existing Well HSR-RUTH CAMP 15-31 is ±697' NW. |
| 2. Proposed Well CAMP 10N-30HZ. | 8. Existing Well HSR-TEST 16-31 is ±628' NE. |
| 3. Proposed Well CAMP 24N-30HZ. | 9. Existing Facilities are ±528' N and ±662' N. |
| 4. Proposed Well CAMP 24C-30HZ. | 10. Emissions Control Device is ±656' NW. |
| 5. Proposed Well CAMP 9N-30HZ. | 11. Meter House is ±710' N. |
| 6. Operational Disturbance Area. | 12. Private Roads are ±445' S, ±515' N, ±517' NW, ±595' NE, ±749' NW, and ±768' N. |

Legend

- | | | |
|---|--|---|
| ● Proposed Well | ■ Meter House | ■ Facilities Enclosure |
| ✱ Existing Well | □ Disturbance Area | — Private Road |
| ■ ECD | □ 400' Radius | — Underground Pipeline |

Reference Location

** All Measurements are Made from
Reference Well CAMP 24N-30HZ**
Lat: 40.175944° Long: -104.701572° (NAD83)
Elevation: 4949 Feet
Surface Use: Rangeland



Use our resources to find yours!
www.petro-fs.com
(303) 928-7128

Field Date: 11/11/2011
Drafting Date: 11/17/2011
Drafter: DMM
Checked By: BHF

Data Sources:
- Aerial courtesy of NAIP (2009)

Prepared for: **Anadarko**
Petroleum Corporation
KERR-MCGEE OIL & GAS ONSHORE LP