

**Erin Bibeau**

Regulatory Compliance Representative  
DJ Basin



4557 Denrose Ct.  
Ft. Collins, CO 80524  
Telephone 970.419.7816 Mobile 970.219.8703  
Fax 970.493.9219  
ebibeau@marathonoil.com

February 13, 2012

David Bauer  
Weld County  
1111 H Street  
Greeley, CO 80632

Re: 30 Day Notice Requirement (Rule 305)  
Advance Notice of Drilling Operations

Crow Valley 7-62-23-2H Well  
NENW Section 23, Township 7N, Range 62W  
320' FNL and 2036' FWL  
Weld County, Colorado

Crow Valley 7-62-14-2H Well  
NENW Section 23, Township 7N, Range 62W  
290' FNL and 2036' FWL  
Weld County, Colorado

Dear Mr. Bauer:

Marathon Oil Company ("Marathon") is filing Applications for Permit to Drill with the Colorado Oil and Gas Conservation Commission for the above referenced wells.

The enclosed notification, pursuant to Rule 305, is required as part of the filing process. Please contact Greg Ralston, Marathon Land Representative, at 713-296-2409 if you have any questions.

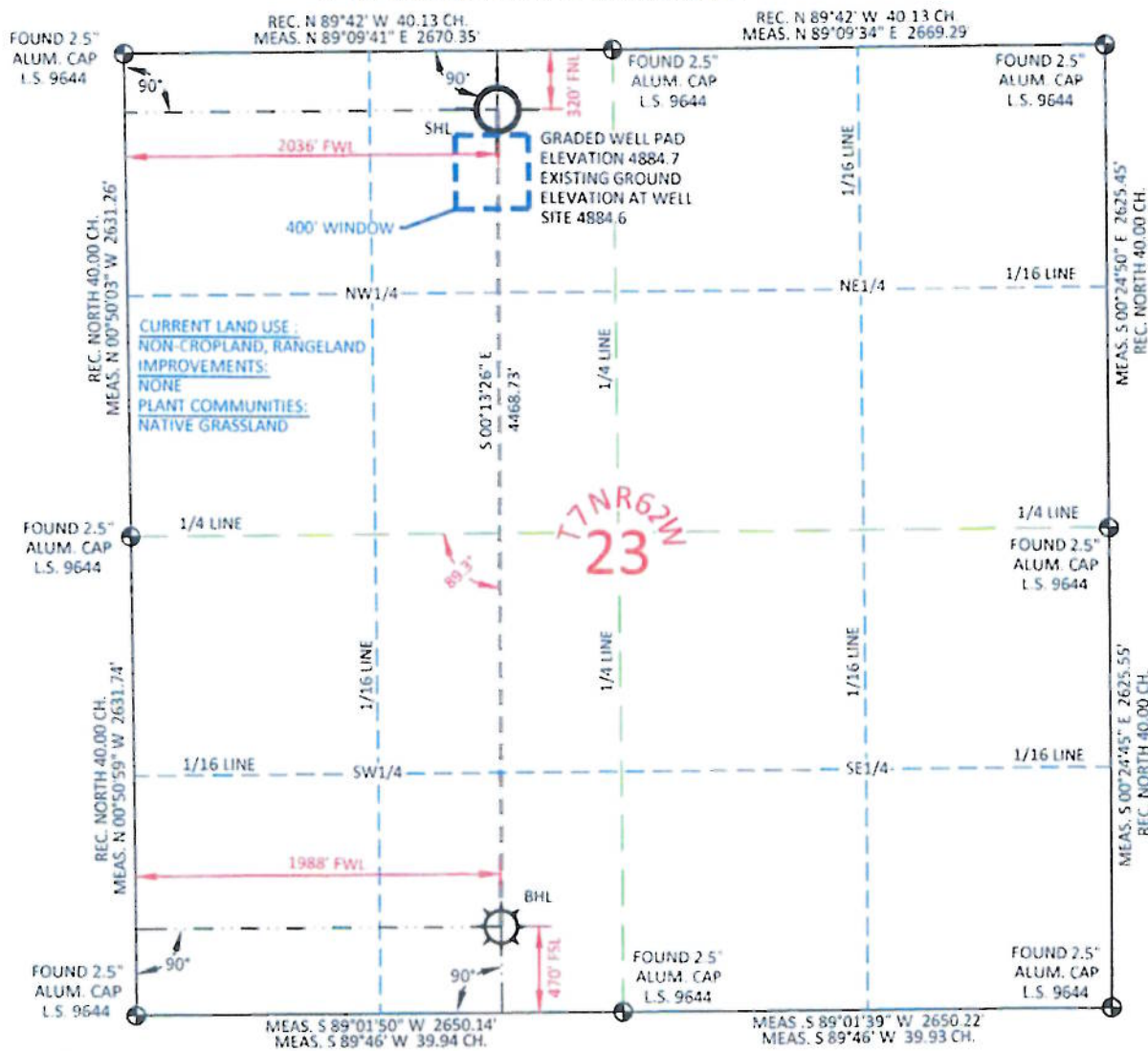
Sincerely,

A handwritten signature in blue ink, appearing to read 'Erin Bibeau'.

Erin Bibeau  
Regulatory Compliance Rep.

Enclosures: Well Location Plat  
Pad & Road Location Plats

**MARATHON OIL CO. CROW VALLEY 7-62-23-2H**  
 LOCATED WITHIN THE NE1/4 NW1/4, SECTION 23, T7N, R62W  
 OF THE 6TH P.M., WELD COUNTY, COLORADO



**SURFACE HOLE LOCATION**

GEOGRAPHIC COORDINATES	LAT.	40.566065°
	LONG.	104.291052°
	LAT.	40.566082°
	LONG.	104.2900546°
	LAT.	40°33'57.84"
	LONG.	104°17'27.79"
STATE PLANE COORDINATES	LAT.	40°33'57.90"
	LONG.	104°17'25.96"
	NORTH	1451348.24
STATE PLANE COORDINATES	EAST	3335869.44
	NORTH	451348.40
	EAST	2336018.81
FOOTAGE: 2036' FWL - 320' FNL		
MEASURE DATE		INSTRUMENT OPERATOR
11/01/2011		ALAN BLATTEL
COMMENTS/REMARKS		

**BOTTOM HOLE LOCATION**

GEOGRAPHIC DEC. DEG. DIP. MIN. SEC.	LAT.	40.553800°
	LONG.	104.291208°
	LAT.	40.553817°
	LONG.	104.290702°
	LAT.	40°33'13.68"
	LONG.	104°17'28.35"
STATE PLANE CO. NORTH	NORTH	1446879.54
	EAST	3335886.90
	NORTH	446879.78
STATE PLANE CO. EAST	EAST	2336036.32
	FOOTAGE: 1988' FWL - 470' FSL	
	MEASURE DATE 11/01/2011	
INSTRUMENT OPERATOR ALAN BLATTEL		
PDOP		2.7
SHL GRND ELEV.		4884.6'

I, Rodney A. Walters, Professional Land Surveyor, CO PLS #16847 hereby certify that (in accordance with a request from Anna Walls with Marathon Oil Co., 5555 San Felipe, Houston, TX 77056) I and or personnel under my direction made a survey on the 1st day of November 2011, for the Surface Hole Location and Elevation of Marathon Oil Co. Crow Valley 7-62-23-2H being located in the NE1/4 NW1/4, Section 23, T7N, R62W, and the Bottom Hole Location being located in the SE1/4 SW1/4 of Section 23, T7N, R62W, both being of the 6th P.M., Weld County, State of Colorado.

- All bearings and distances are GRID, based on the Colorado State Plane Coordinate System, North Zone, North American Datum 1983 from GPS observations occupying a WHS control point (5/8" rebar) and having the Location and Elevation derived from an Opus Solution
- Vertical Datum used is of NAVD 88.
- Record Bearings and Distances as shown are based on the General Land Office Survey plat approved on the 16th day of December 1872.



**WILLIAM H. SMITH & ASSOCIATES P.C.**  
 SURVEYING CONSULTANTS  
 150 EAST SECOND NORTH  
 GREEN RIVER, WY 80633  
 PHONE: 307-875-3638  
 307-875-3639  
 www.williamsmithpc.com

**LEGEND**

- FOUND/SET CORNER
- ⊗ CALCULATED CORNER
- NOTHING FOUND

**LOCATION:**

CROW VALLEY 7-62-23-2H  
 WITHIN THE NE1/4 NW1/4,  
 SECTION 23, T 7 N, R 62 W,  
 6TH PM.  
 WELD COUNTY,  
 COLORADO

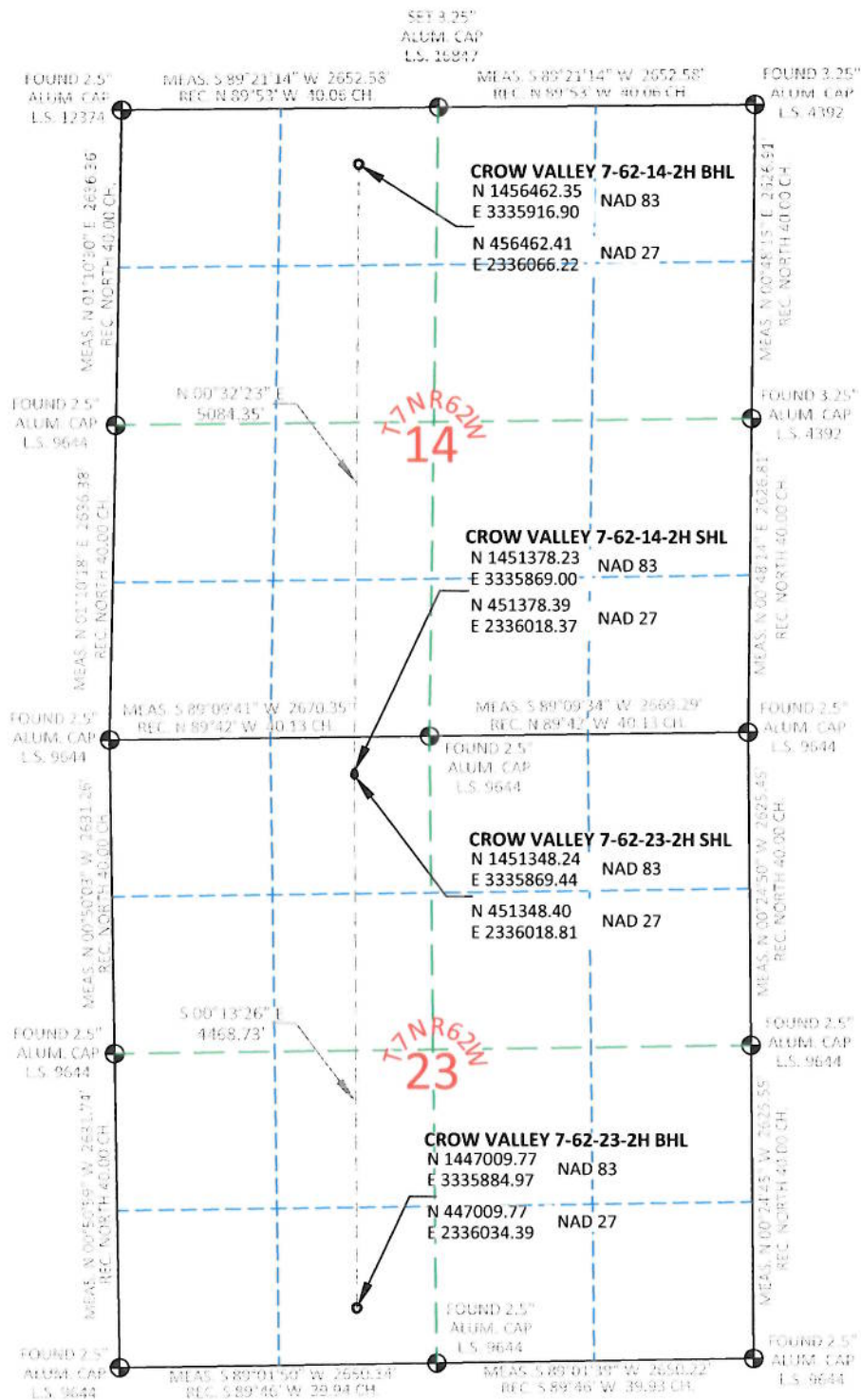
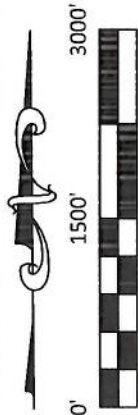
**MARATHON OIL COMPANY**  
 PO BOX 3128, HOUSTON TX, 77253  
 5555 SAN FELIPE, HOUSTON TX, 77056

**WELL LOCATION PLAT**

SCALE: 1"=1000'  
 DATE: 11/09/2011  
 EXHIBIT "A"  
 SHEET 1 OF 1







# NOTES:

- All bearings and distances are **GRID**, based on the Colorado State Plane Coordinate System, North Zone, North American Datum 1983 from GPS observations occupying a WHS control point (5/8" rebar) and having the Location and Elevation derived from an Opus Solution.
- Vertical Datum used is of NAVD 88.
- Record Bearings and Distances as shown are based on the General Land Office Survey plat approved on the 16th day of December 1872.



**WILLIAM H. SMITH  
& ASSOCIATES P.C.**

**SURVEYING CONSULTANTS**  
350 EAST SECOND NORTH PHONE: 307-875-3638  
GREEN RIVER, WY 307-875-3639  
www.whsmithpc.com

DRAWN BY: BW

CHECKED BY: RAW

PROJECT NO: 762232H

JOB NO: 2011001

REVISIONS:

## CONFIDENTIALITY NOTES:

The information contained in this plat is legally privileged and confidential information intended only for the use of the recipients. If you are not the intended recipients, you are hereby notified that any use, dissemination, distribution or copying of this information is strictly prohibited.

## LOCATION:

CROW VALLEY  
7-62-23-2H &  
7-62-14-2H  
WITHIN THE NE/4  
NW/4 SECTION 23,  
T 7 N, R 62 W,  
6TH PM.  
WELD COUNTY,  
COLORADO

## MARATHON OIL COMPANY

PO BOX 3128, HOUSTON TX, 77253  
5555 SAN FELIPE, HOUSTON TX, 77056

## MULTI WELL PAD

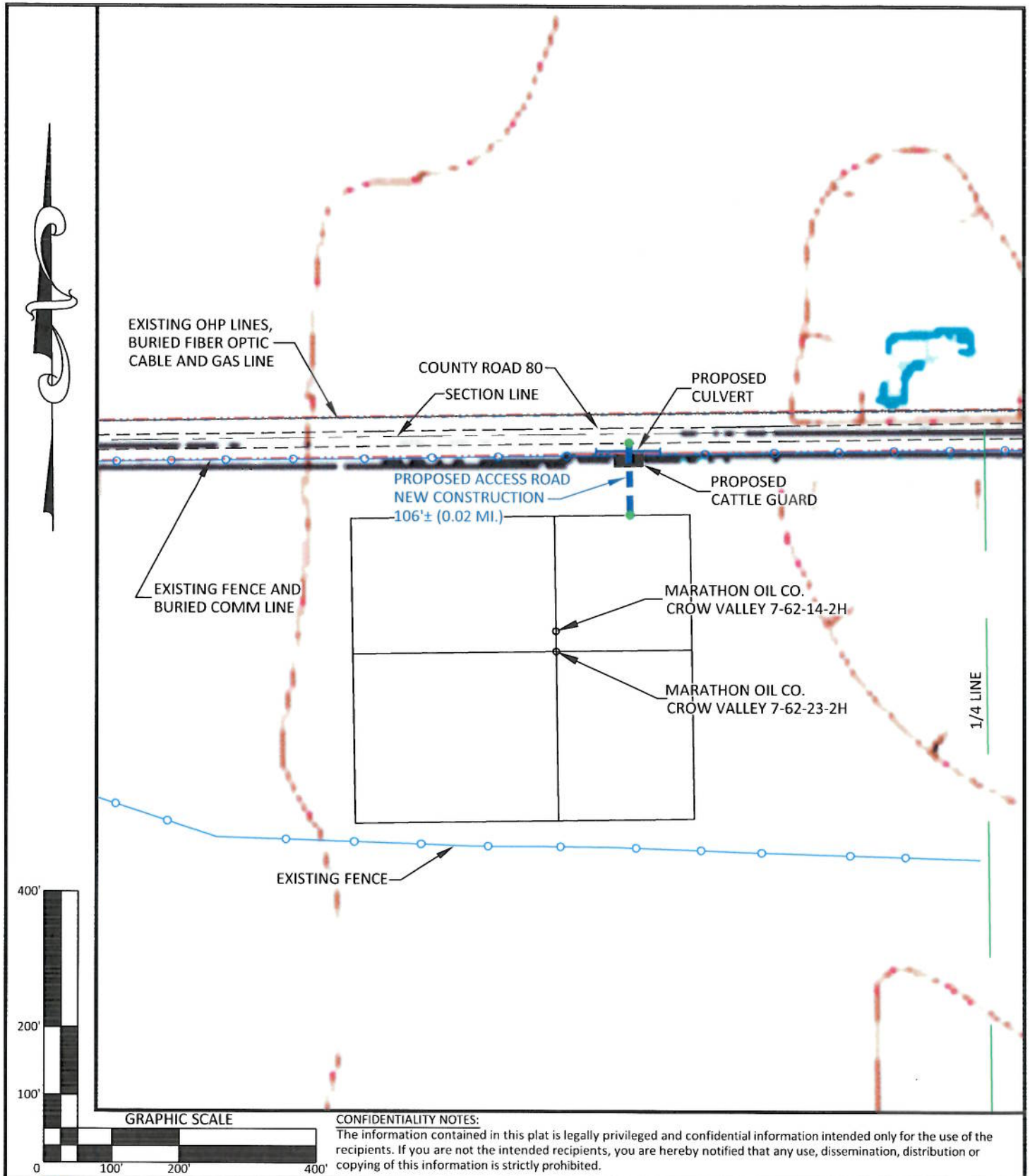
SCALE: 1"=1500'

EXHIBIT "P"

DATE: 1/13/2012

SHEET 15 OF 15





**CONFIDENTIALITY NOTES:**

The information contained in this plat is legally privileged and confidential information intended only for the use of the recipients. If you are not the intended recipients, you are hereby notified that any use, dissemination, distribution or copying of this information is strictly prohibited.



**WILLIAM H. SMITH  
& ASSOCIATES P.C.**  
SURVEYING CONSULTANTS

550 EAST SECOND NORTH PHONE: 307-875-3638  
GREEN RIVER, WY 307-875-3639  
www.whsmithpc.com

DRAWN BY: BW CHECKED BY: RAW

PROJECT NO: 762232H JOB NO: 2011001

REVISIONS:

**LEGEND**

PROPOSED ACCESS	
EXISTING 2-TRACK	
EXISTING ROAD	
1/16TH LINE	
1/4 LINE	
SECTION LINE	
FENCE	

**LOCATION:**

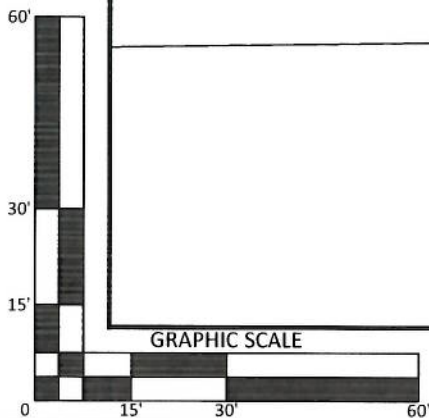
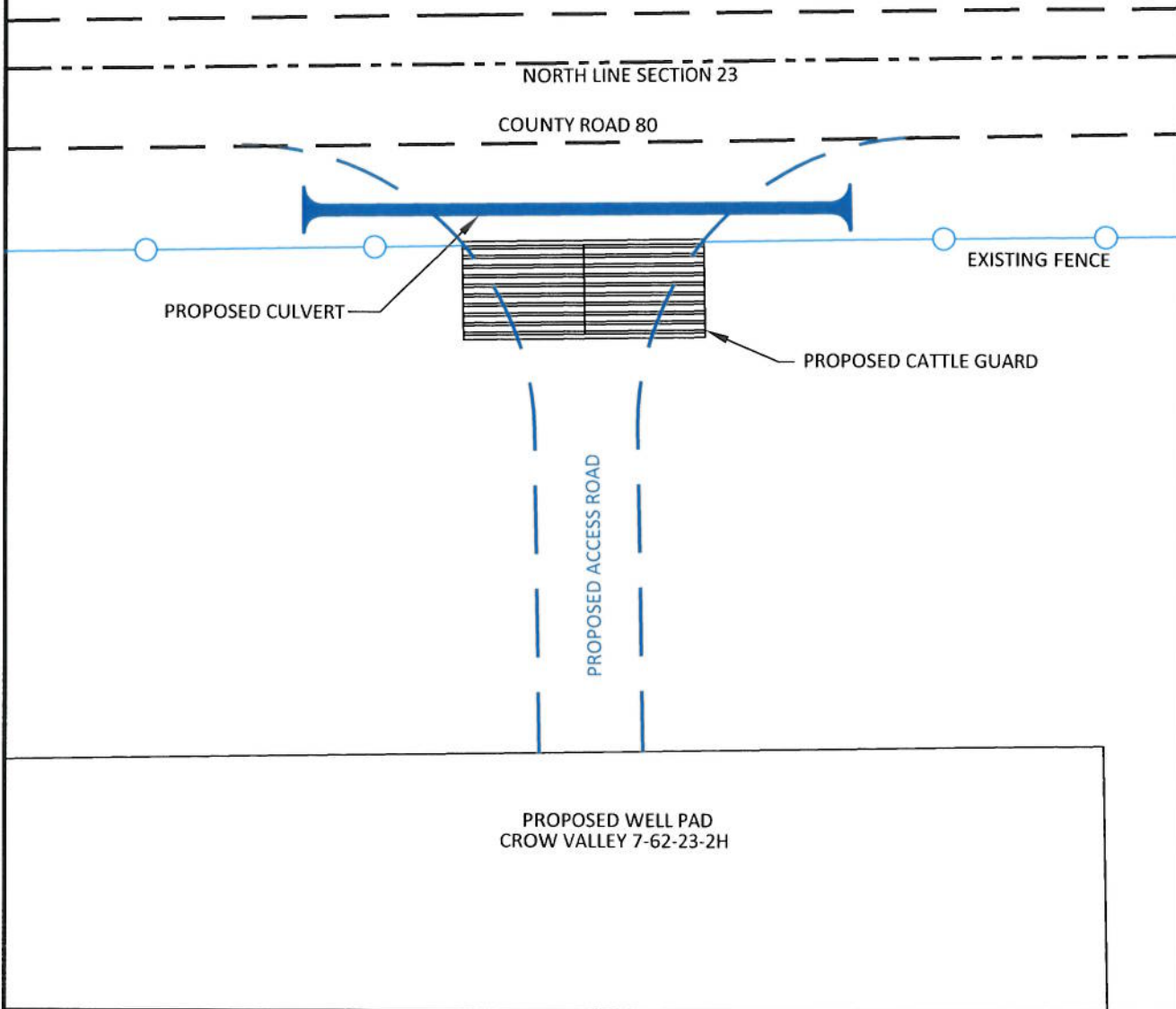
CROW VALLEY  
7-62-23-2H &  
7-62-14-2H  
WITHIN THE NE/4  
NW/4 SECTION 23,  
T 7 N, R 62 W,  
6TH PM.  
WELD COUNTY,  
COLORADO

**MARATHON OIL COMPANY**  
PO BOX 3128, HOUSTON TX, 77253  
5555 SAN FELIPE, HOUSTON TX, 77056

**ACCESS ROAD MAP**

SCALE: 1"=200'  
DATE: 1/13/2012

EXHIBIT "E"  
SHEET 4 OF 15



**CONFIDENTIALITY NOTES:**

The information contained in this plat is legally privileged and confidential information intended only for the use of the recipients. If you are not the intended recipients, you are hereby notified that any use, dissemination, distribution or copying of this information is strictly prohibited.



**WILLIAM H. SMITH  
& ASSOCIATES P.C.**  
SURVEYING CONSULTANTS

550 EAST SECOND NORTH PHONE: 307-875-3638  
GREEN RIVER, WY 307-875-3639  
www.whsmithpc.com

DRAWN BY: BW

CHECKED BY: RAW

PROJECT NO: 762232H

JOB NO: 2011001

REVISIONS:

**LEGEND**

ACCESS ROAD	
EXISTING ROAD	
SECTION LINE	

**LOCATION:**

CROW VALLEY  
7-62-23-2H &  
7-62-14-2H  
WITHIN THE NE/4  
NW/4 SECTION 23,  
T 7 N, R 62 W,  
6TH PM.  
WELD COUNTY,  
COLORADO

**MARATHON OIL COMPANY**  
PO BOX 3128, HOUSTON TX, 77253  
5555 SAN FELIPE, HOUSTON TX, 77056

**ACCESS ROAD ENTRANCE**

SCALE: 1"=30'

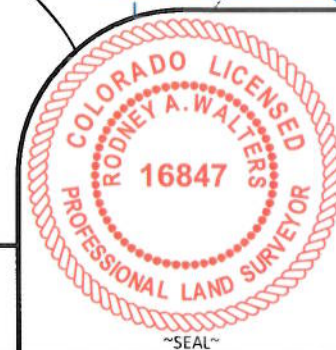
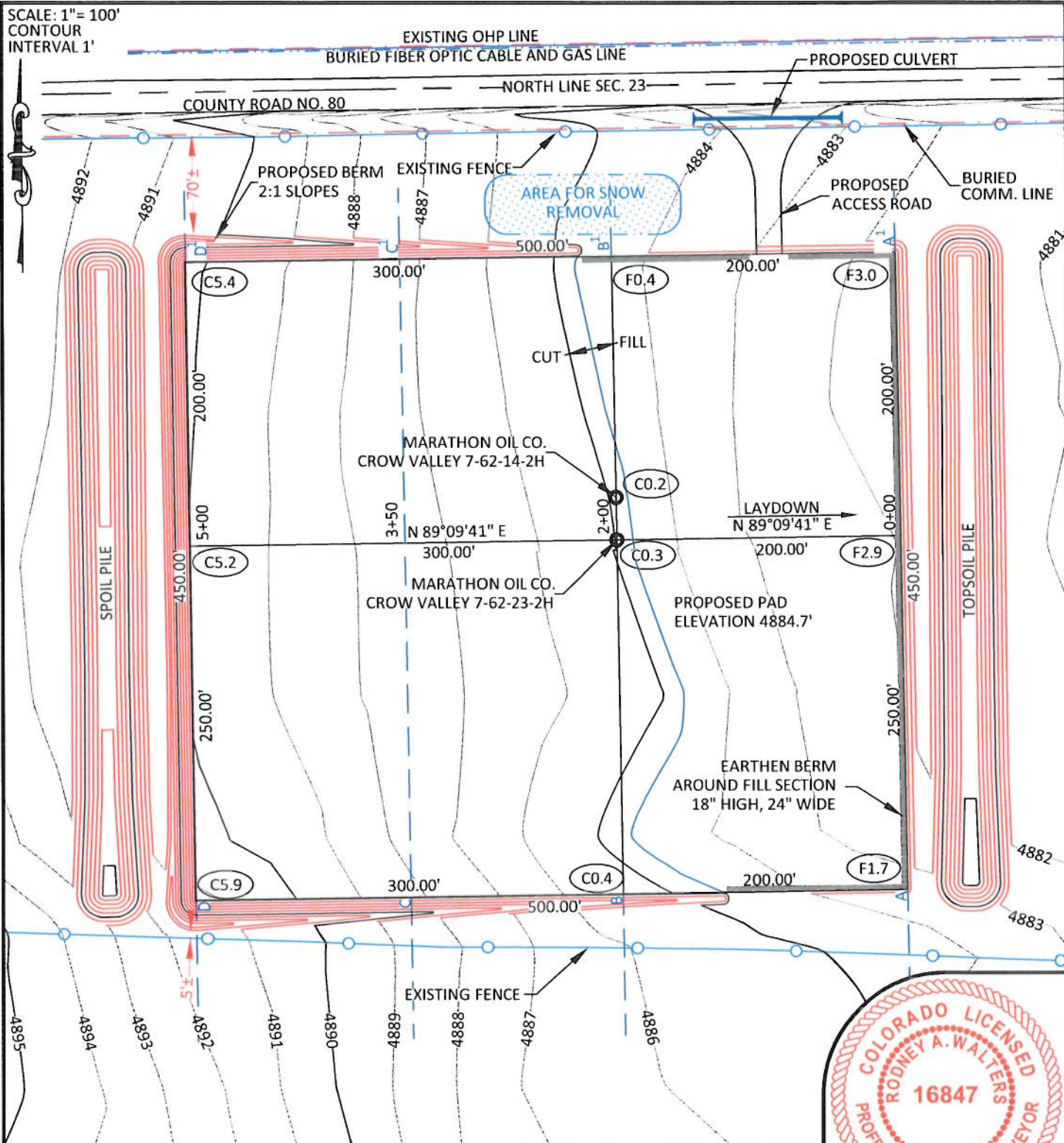
DATE: 1/13/2012

EXHIBIT "A"

SHEET 1 OF 1



SCALE: 1"= 100'  
CONTOUR  
INTERVAL 1'



**NOTES:**

- Elevation of pad shown on plans are to constructed pad without final gravel padding placement. Depth, volume, and padding material to be determined by operator.
- The information contained in this plat is legally privileged and confidential information intended only for the use of the recipients. If you are not the intended recipients, you are hereby notified that any use, dissemination, distribution or copying of this information is strictly prohibited.



**WILLIAM H. SMITH  
& ASSOCIATES P.C.**  
SURVEYING CONSULTANTS  
350 EAST SECOND NORTH GREEN RIVER, WY  
PHONE: 307-875-3638  
307-875-3639  
www.whsmithpc.com

**CONSTRUCTION DATA**

CUT SLOPE:	2:1
FILL SLOPE:	3:1
TOTAL CUT:	16,766 CU. YDS.
TOTAL FILL:	8,080 CU. YDS.
TOP SOIL AT 6"	4,618 CU. YDS.
SPOIL:	4,067 CU. YDS.
DISTURBED AREA	249,380 SQ. FT.
DISTURBED AREA	5.72 ACRES

**LOCATION:**

CROW VALLEY  
7-62-23-2H &  
7-62-14-2H  
WITHIN THE NE/4  
NW/4 SECTION 23,  
T 7 N, R 62 W,  
6TH PM.  
WELD COUNTY,  
COLORADO

**MARATHON OIL COMPANY**  
PO BOX 3128, HOUSTON TX, 77253  
5555 SAN FELIPE, HOUSTON TX, 77056

**CONSTRUCTION LAYOUT**

1946' FWL	320' FNL
SCALE: 1"=100'	EXHIBIT "I"
DATE: 1/13/2012	SHEET 8 OF 15