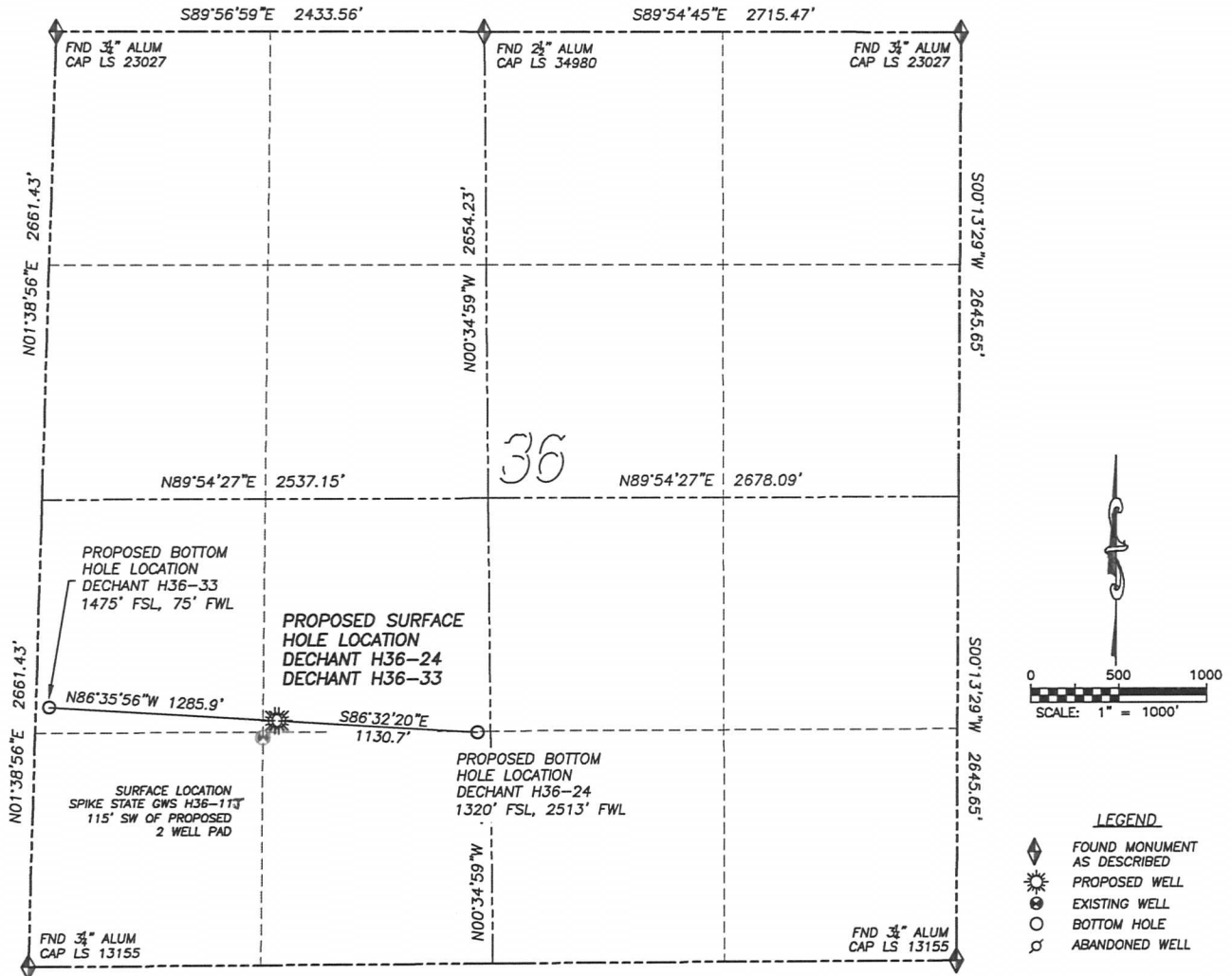


DALEY LAND SURVEYING, INC. PARKER, CO. 80134 303 953 9841

MULTI-WELL PAD DIRECTIONAL LAYOUT DECHANT H36-24 & DECHANT H36-33

SECTION 36, TOWNSHIP 3 NORTH, RANGE 65 WEST OF THE 6TH PRINCIPAL MERIDIAN



NAD 83 LATITUDE AND LONGITUDE

DECHANT H36-33 SURFACE HOLE:

LATITUDE: N40.17813°
LONGITUDE: W104.61677°
ELEVATION: 4825'
FOOTAGE: 1393' FSL, 1360' FWL
PDOP: 1.4
QTR/QTR: NE4/SW4
PROP LINE: 1225'± EAST

BOTTOM HOLE:

LATITUDE: N40.17834°
LONGITUDE: W104.62136°
FOOTAGE: 1475' FSL, 75' FWL

NEAREST EXISTING WELL:

SPRIKE STATE GWS H36-11J SURFACE HOLE
LATITUDE: N40.17787°
LONGITUDE: W104.61701°
ELEVATION: 4826'
115' SOUTHWEST

NAD 83 LATITUDE AND LONGITUDE

DECHANT H36-24 SURFACE HOLE:

LATITUDE: N40.17813°
LONGITUDE: W104.61669°
ELEVATION: 4824'
FOOTAGE: 1393' FSL, 1383' FWL
PDOP: 1.4
QTR/QTR: NE4/SW4
PROP LINE: 1202'± EAST

BOTTOM HOLE:

LATITUDE: N40.17795°
LONGITUDE: W104.61265°
FOOTAGE: 1320' FSL, 2513' FWL

NEAREST EXISTING WELL:

SPRIKE STATE GWS H36-11J SURFACE HOLE
LATITUDE: N40.17787°
LONGITUDE: W104.61701°
ELEVATION: 4826'
130' SOUTHWEST

DALEY LAND SURVEYING, INC. PARKER, CO. 80134 303 953 9841

MULTI-WELL PAD LOCATION DRAWING DECHANT H36-24 & DECHANT H36-33

SECTION 36, TOWNSHIP 3 NORTH, RANGE 65 WEST OF THE 6TH PRINCIPAL MERIDIAN

