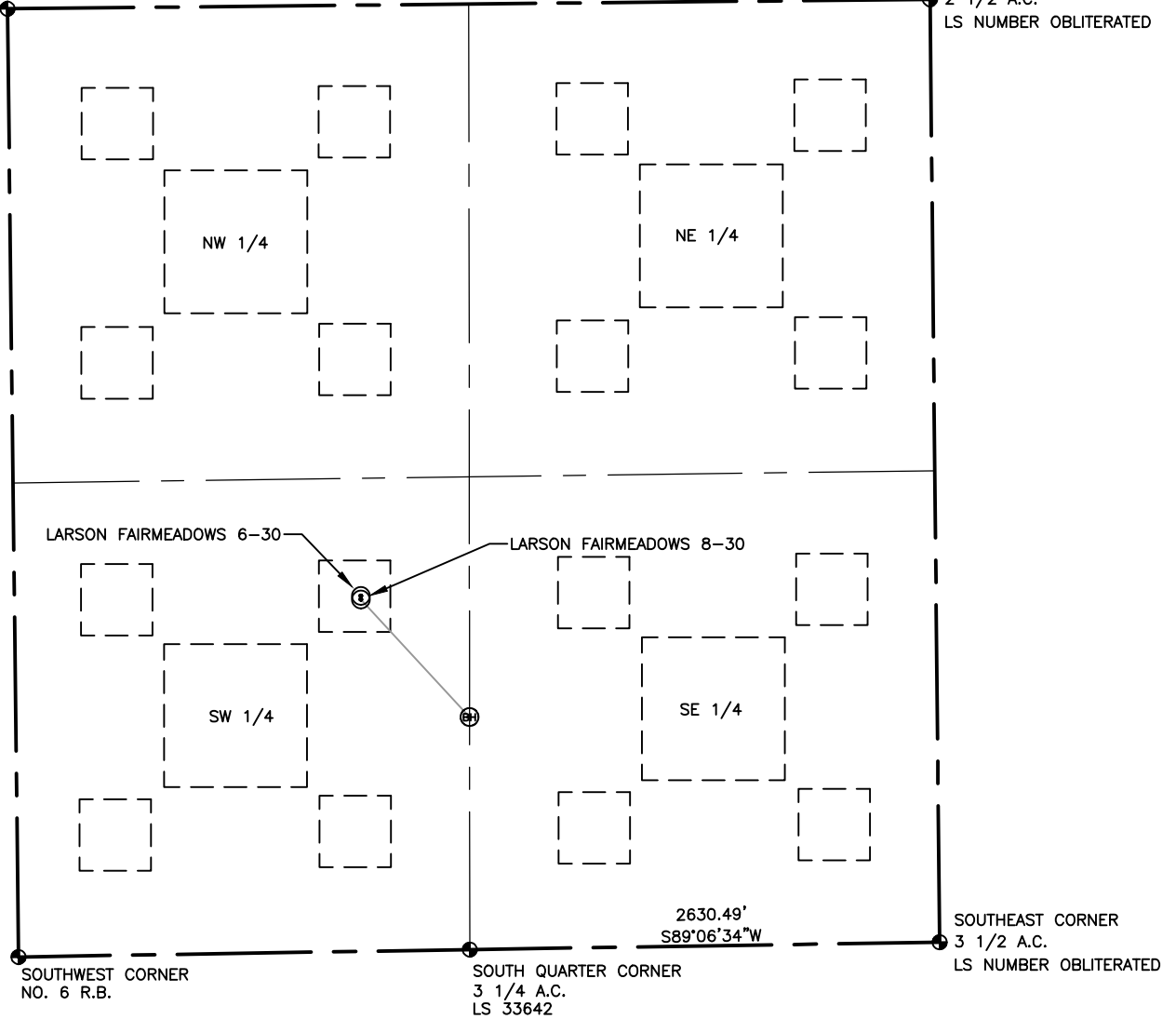


NORTHWEST CORNER
3 1/2 A.C.
LS NUMBER OBLITERATED

SECTION 30 T6N R63W

NORTHEAST CORNER
2 1/2 A.C.
LS NUMBER OBLITERATED



LEGEND

⊕ ALIQUOT CORNER

⊕ BOTTOM HOLE

⊕ PROPOSED WELL

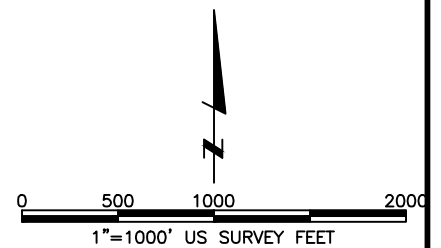
A.C. ALUMINUM CAP

SECTION LINE

QUARTER SECTION

PROPOSED WELL BORE TRAJECTORY

DRILL WINDOWS



LAMP RYNEARSON
& ASSOCIATES

4715 Innovation Drive 970.226.0342 | P
Fort Collins, CO 80525 970.226.0879 | F
www.LRA-Inc.com

Larson Fairmeadows
6N63W/30NESW
Multi-Well Plan

drawn by
KJW

date
02/14/12

cogcc id
302732

project - task number
0211005.11

book and page
ST01 34

surface - location
NE/4, SW/4, SEC 30 T6N
R63W

path\filename P:_Engineering\0211005.11\DRAWINGS\0211005-11PNT200.dwg