

CONFIDENTIALITY NOTES:
 The information contained in this plat is legally privileged and confidential information intended only for the use of the recipients. If you are not the intended recipients, you are hereby notified that any use, dissemination, distribution or copying of this information is strictly prohibited.



**WILLIAM H. SMITH
& ASSOCIATES P.C.**
 SURVEYING CONSULTANTS
 550 EAST SECOND NORTH PHONE: 307-875-3638
 GREEN RIVER, WY 307-875-3639
 www.whsmithpc.com

DRAWN BY: BW CHECKED BY: RAW
 PROJECT NO: 762302H JOB NO: 2011001
 REVISIONS:

LEGEND

400' PERIMETER
 PROPOSED ACCESS
 EXISTING 2-TRACK
 EXISTING FENCE
 SECTION LINE
 1/4TH LINE

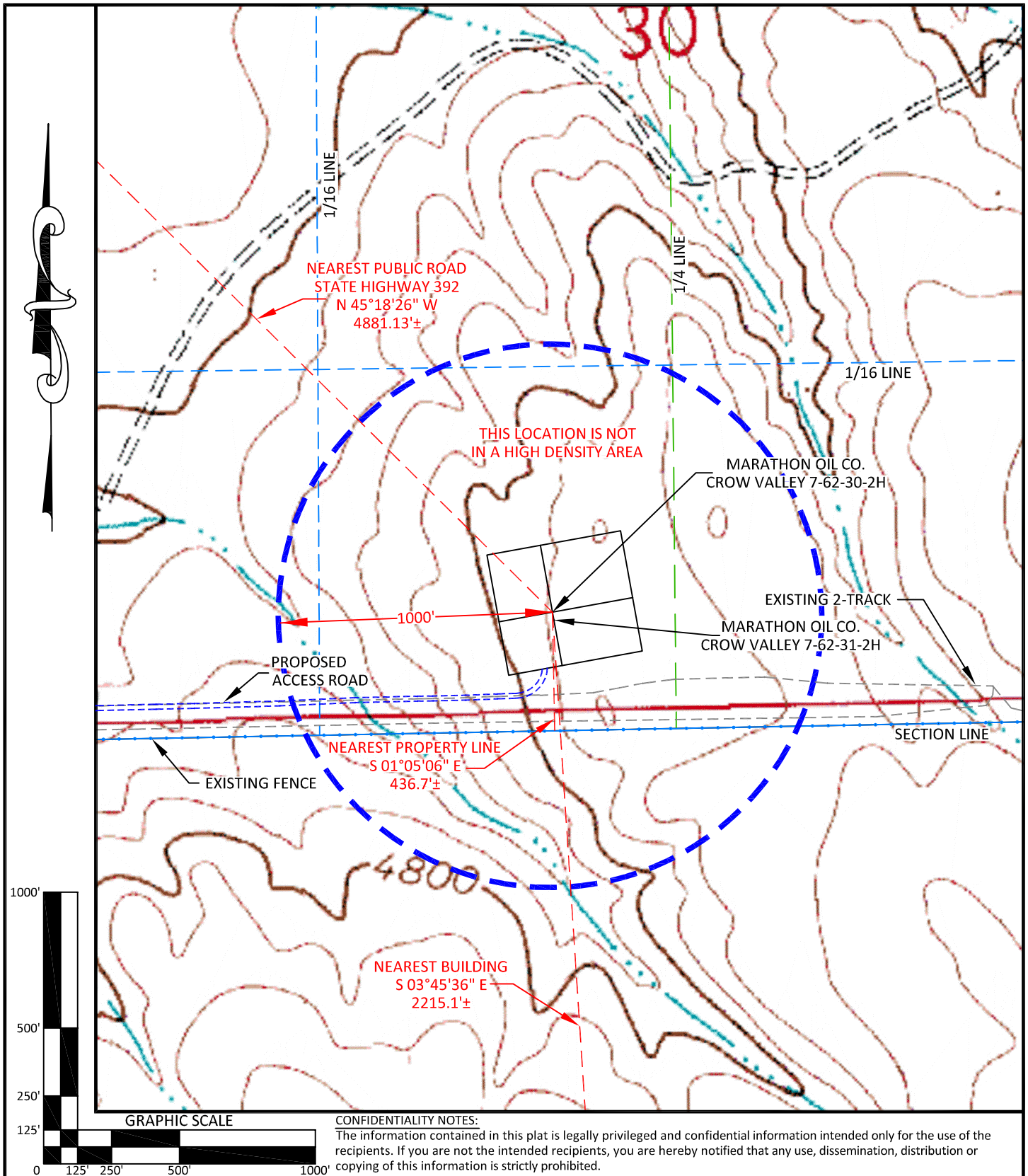
LOCATION:

CROW VALLEY
 7-62-30-2H &
 7-62-31-2H
 SE1/4 SW1/4,
 SECTION 30,
 T 7 N, R 62 W,
 6TH PM.
 WELD COUNTY,
 COLORADO

MARATHON OIL COMPANY
 PO BOX 3128, HOUSTON TX, 77253
 5555 SAN FELIPE, HOUSTON TX, 77056

LOCATION DRAWING

SCALE: 1"=200'
 DATE: 1/5/2012
 EXHIBIT "C"
 SHEET 2 OF 15



**WILLIAM H. SMITH
& ASSOCIATES P.C.**

SURVEYING CONSULTANTS
550 EAST SECOND NORTH PHONE: 307-875-3638
GREEN RIVER, WY 307-875-3639
www.whsmithpc.com

DRAWN BY: BW

CHECKED BY: RAW

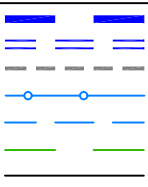
PROJECT NO: 762302H

JOB NO: 2011001

REVISIONS:

LEGEND

1000' RADIUS
PROPOSED ACCESS
EXISTING 2-TRACK
FENCE
1/16 LINE
1/4 LINE
SECTION LINE



LOCATION:

CROW VALLEY
7-62-30-2H &
7-62-31-2H
SE1/4 SW1/4,
SECTION 30,
T 7 N, R 62 W,
6TH PM.
WELD COUNTY,
COLORADO

MARATHON OIL COMPANY
PO BOX 3128, HOUSTON TX, 77253
5555 SAN FELIPE, HOUSTON TX, 77056

CULTURE MAP

SCALE: 1"=500'

DATE: 1/5/2012

EXHIBIT "H"

SHEET 7 OF 15