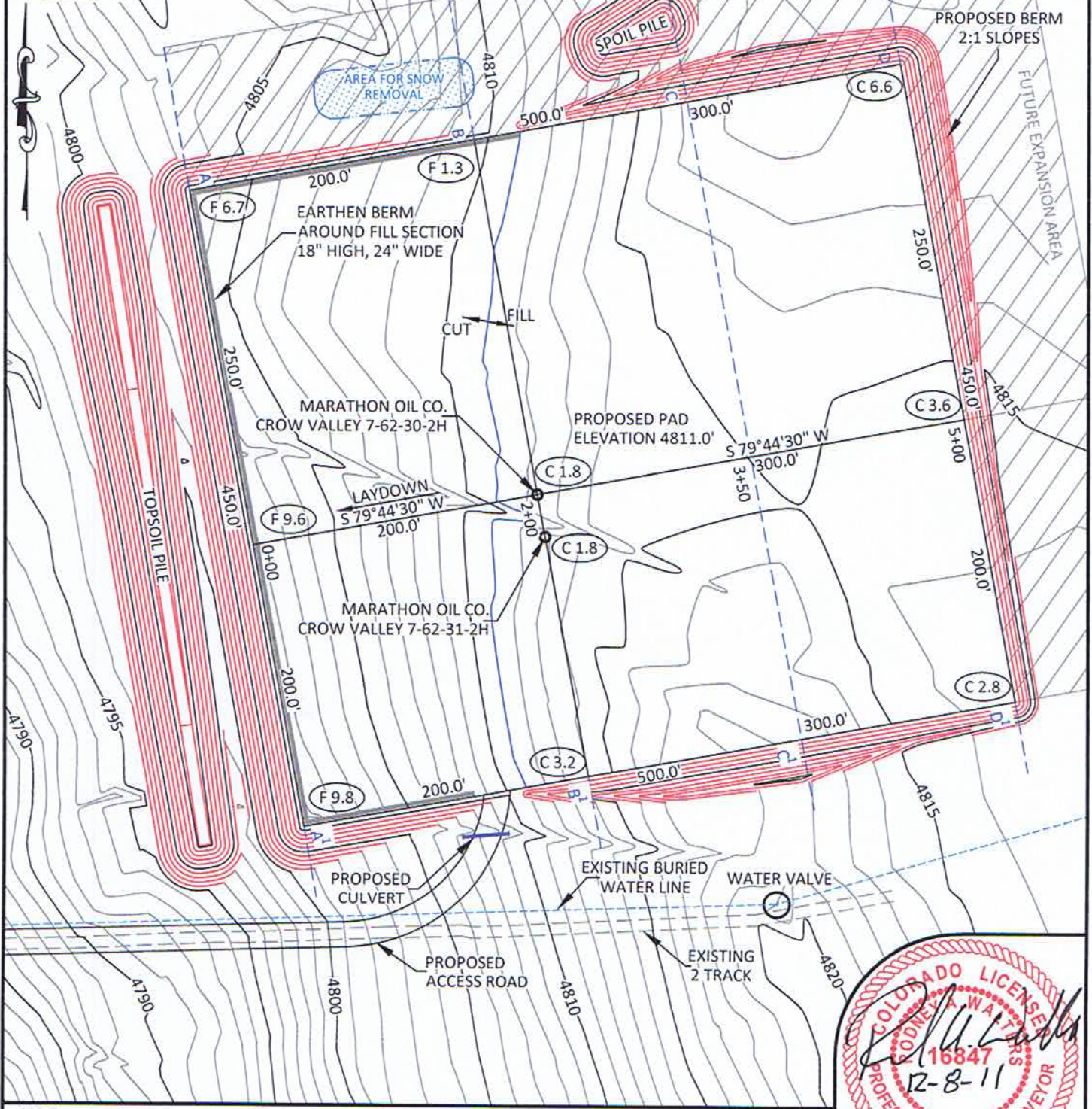


SCALE: 1" = 100'
CONTOUR
INTERVAL 1'



NOTES:

- Elevation of pad shown on plans are to constructed pad without final gravel padding placement. Depth, volume, and padding material to be determined by operator.
- The information contained in this plat is legally privileged and confidential information intended only for the use of the recipients. If you are not the intended recipients, you are hereby notified that any use, dissemination, distribution or copying of this information is strictly prohibited.



WILLIAM H. SMITH & ASSOCIATES P.C.
SURVEYING CONSULTANTS
350 EAST SECOND NORTH GREEN RIVER, WY
PHONE: 307-875-3638
307-875-3639
www.whsmithpc.com

CONSTRUCTION DATA	
CUT SLOPE:	3:1
FILL SLOPE:	3:1
TOTAL CUT:	24,807 CU. YDS.
TOTAL FILL:	19,212 CU. YDS.
TOP SOIL AT 6"	5,008 CU. YDS.
SPOIL:	587 CU. YDS.
DISTURBED AREA:	270,441 SQ. FT.
DISTURBED AREA:	6.21 ACRES

LOCATION:
CROW VALLEY
7-62-30-2H &
7-62-31-2H
SE1/4 SW1/4,
SECTION 30,
T 7 N, R 62 W,
6TH PM.
WELD COUNTY,
COLORADO

MARATHON OIL COMPANY
PO BOX 3128, HOUSTON TX, 77253
5555 SAN FELIPE, HOUSTON TX, 77056

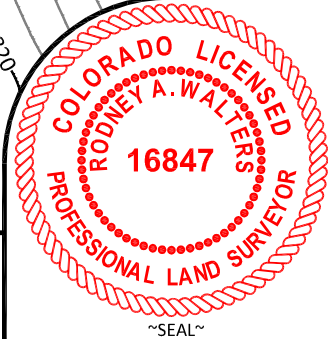
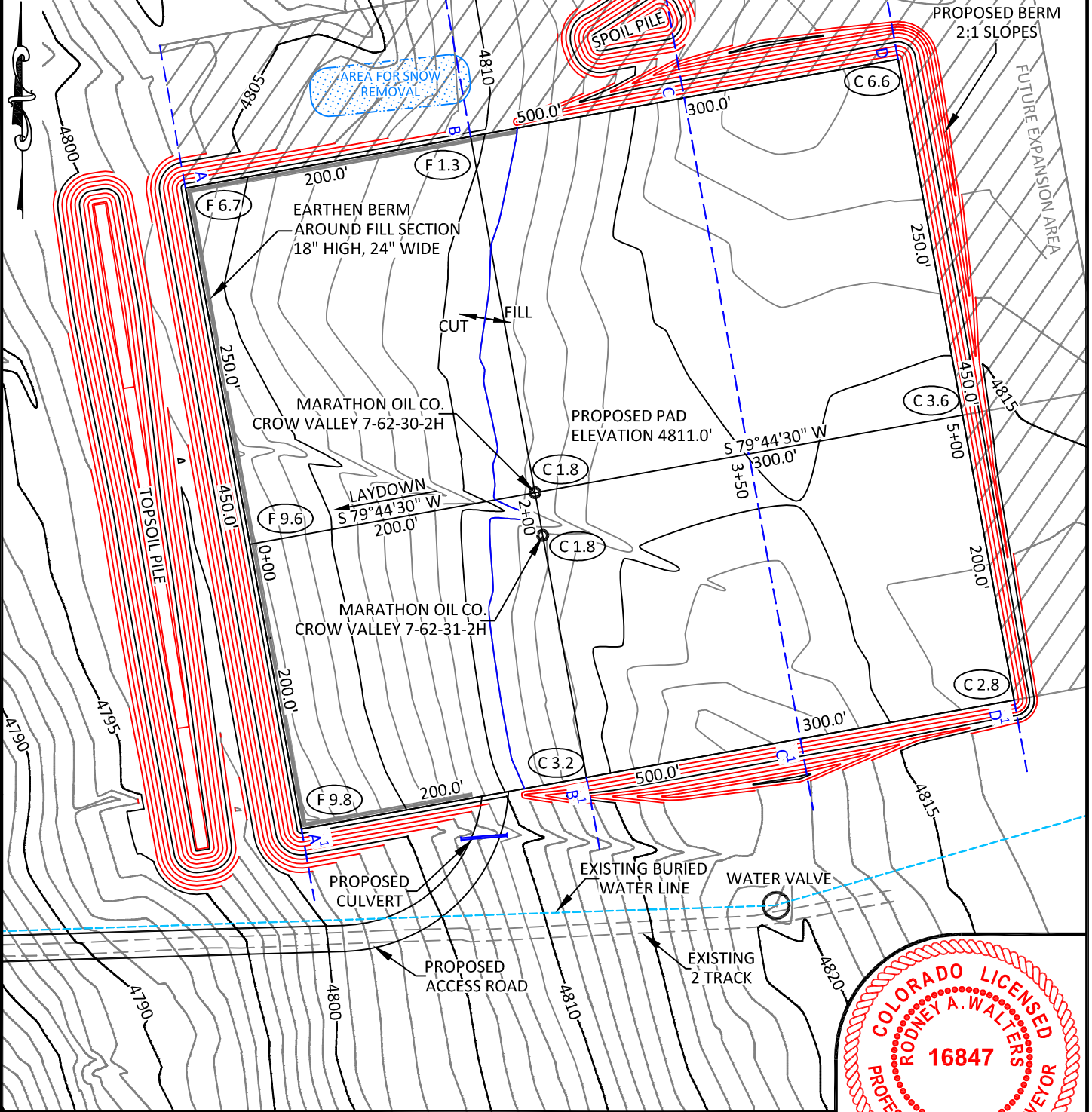
CONSTRUCTION LAYOUT

407' FSL	2137' FWL
SCALE: 1"=100'	EXHIBIT "I"
DATE: 11/30/2011	SHEET 8 of 15

DRAWN BY: BW
PROJECT NO: 762302H
REVISIONS: LAL 12/08/11 UPDATE C/F

CHECKED BY: RAW
JOB NO: 2011001

SCALE: 1" = 100'
CONTOUR
INTERVAL 1'



NOTES:

- Elevation of pad shown on plans are to constructed pad without final gravel padding placement. Depth, volume, and padding material to be determined by operator.
- The information contained in this plat is legally privileged and confidential information intended only for the use of the recipients. If you are not the intended recipients, you are hereby notified that any use, dissemination, distribution or copying of this information is strictly prohibited.



**WILLIAM H. SMITH
& ASSOCIATES P.C.**

SURVEYING CONSULTANTS
550 EAST SECOND NORTH PHONE: 307-875-3638
GREEN RIVER, WY 307-875-3639
www.whsmithpc.com

CONSTRUCTION DATA

CUT SLOPE:	3:1
FILL SLOPE:	3:1
TOTAL CUT:	24,807 CU. YDS.
TOTAL FILL:	19,212 CU. YDS.
TOP SOIL AT 6"	5,008 CU. YDS.
SPOIL	587 CU. YDS.
DISTURBED AREA	270,441 SQ. FT.
DISTURBED AREA	6.21 ACRES

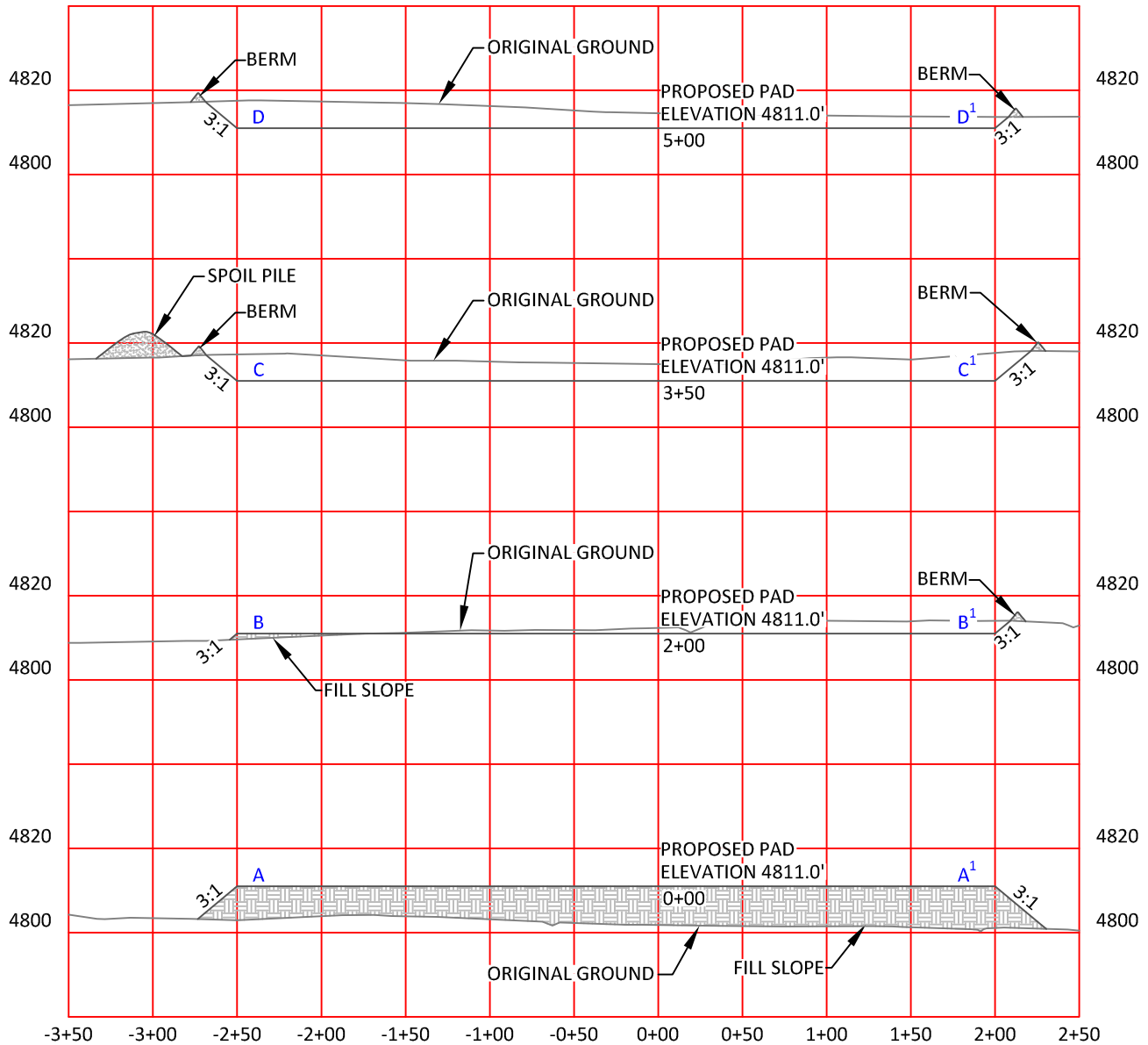
LOCATION:

CROW VALLEY
7-62-30-2H &
7-62-31-2H
SE1/4 SW1/4,
SECTION 30,
T 7 N, R 62 W,
6TH PM.
WELD COUNTY,
COLORADO

MARATHON OIL COMPANY
PO BOX 3128, HOUSTON TX, 77253
5555 SAN FELIPE, HOUSTON TX, 77056

CONSTRUCTION LAYOUT

407' FSL	2137' FWL
SCALE: 1"=100'	EXHIBIT "I"
DATE: 11/30/2011	SHEET 8 of 15



HORIZONTAL SCALE: 1"=100'
 VERTICAL SCALE: 1"=40'

NOTES:

- Elevation of pad shown on plans are to constructed pad without final gravel padding placement. Depth, volume, and padding material to be determined by operator.
- The information contained in this plat is legally privileged and confidential information intended only for the use of the recipients. If you are not the intended recipients, you are hereby notified that any use, dissemination, distribution or copying of this information is strictly prohibited.



**WILLIAM H. SMITH
& ASSOCIATES P.C.**

SURVEYING CONSULTANTS
 550 EAST SECOND NORTH PHONE: 307-875-3638
 GREEN RIVER, WY 307-875-3639
 www.whsmithpc.com

CONSTRUCTION DATA

CUT SLOPE:	3:1
FILL SLOPE:	3:1
TOTAL CUT:	24,807 CU. YDS.
TOTAL FILL:	19,212 CU. YDS.
TOP SOIL AT 6"	5,008 CU. YDS.
SPOIL	587 CU. YDS.
DISTURBED AREA	270,441 SQ. FT.
DISTURBED AREA	6.21 ACRES

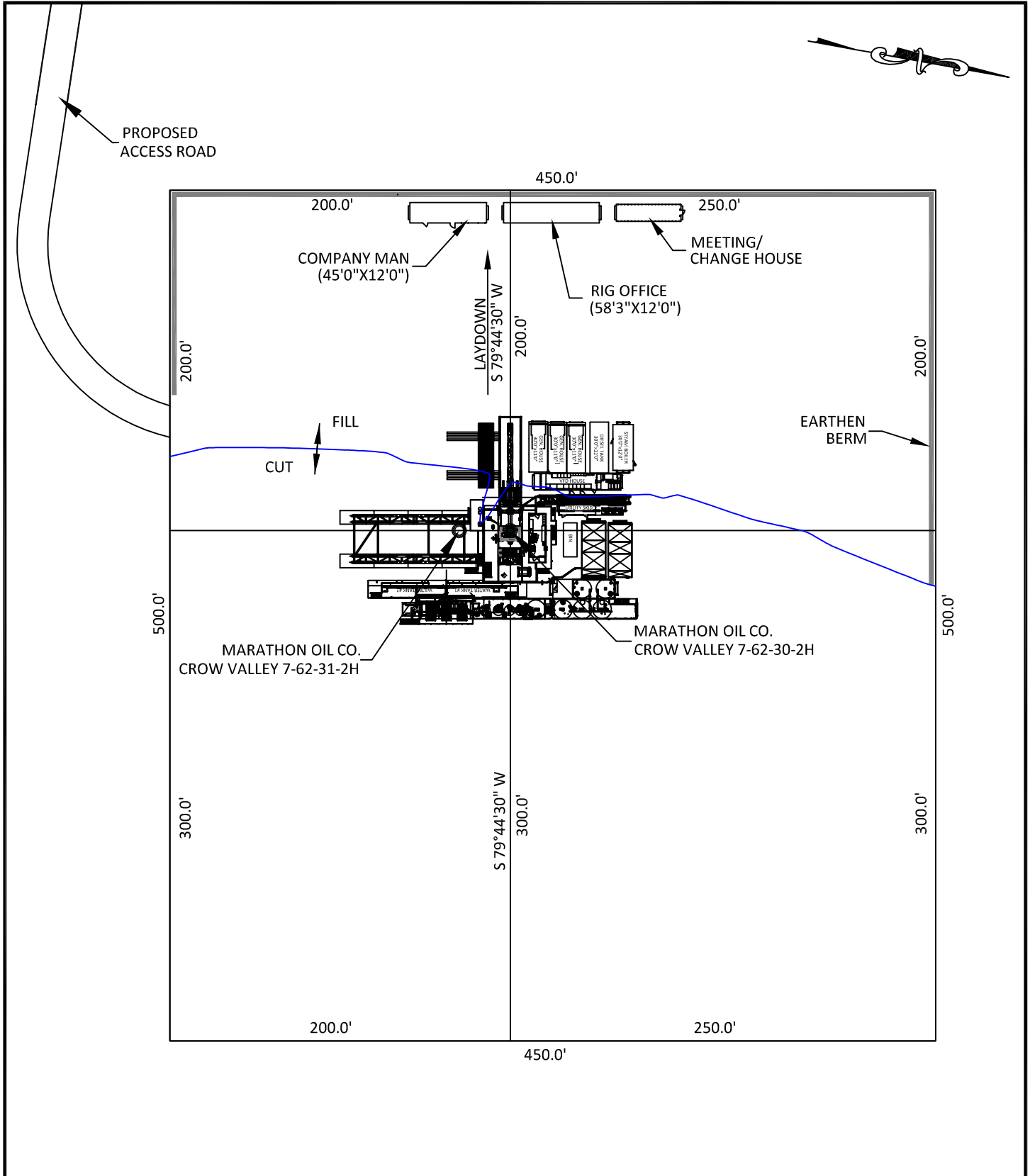
LOCATION:

CROW VALLEY
 7-62-30-2H &
 7-62-31-2H
 SE1/4 SW1/4,
 SECTION 30,
 T 7 N, R 62 W,
 6TH PM.
 WELD COUNTY,
 COLORADO

MARATHON OIL COMPANY
 PO BOX 3128, HOUSTON TX, 77253
 5555 SAN FELIPE, HOUSTON TX, 77056

**CONSTRUCTION LAYOUT
CROSS SECTIONS**

SCALE: NOTED	EXHIBIT "J"
DATE: 11/30/2011	SHEET 9 of 15



WILLIAM H. SMITH & ASSOCIATES P.C.
SURVEYING CONSULTANTS
 550 EAST SECOND NORTH PHONE: 307-875-3638
 GREEN RIVER, WY 307-875-3639
 www.whsmithpc.com

DRAWN BY: BW	CHECKED BY: RAW
PROJECT NO: 762302H	JOB NO: 2011001
REVISIONS:	

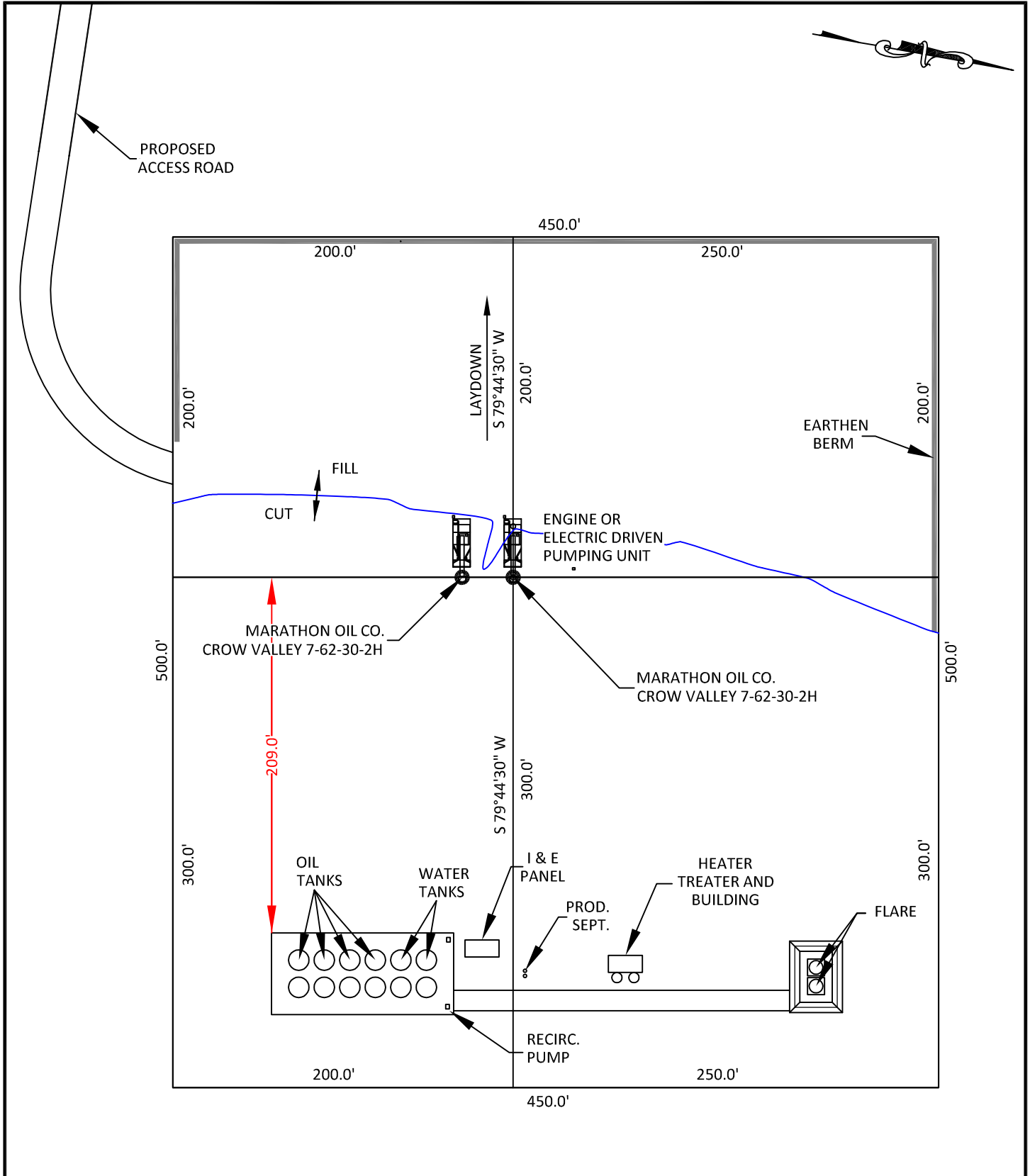
CONFIDENTIALITY NOTES:
 The information contained in this plat is legally privileged and confidential information intended only for the use of the recipients. If you are not the intended recipients, you are hereby notified that any use, dissemination, distribution or copying of this information is strictly prohibited.

LOCATION:
 CROW VALLEY
 7-62-30-2H &
 7-62-31-2H,
 SE1/4 SW1/4,
 SECTION 30,
 T 7 N, R 62 W,
 6TH PM.
 WELD COUNTY,
 COLORADO

MARATHON OIL COMPANY
 PO BOX 3128, HOUSTON TX, 77253
 5555 SAN FELIPE, HOUSTON TX, 77056

DRILLING FACILITIES

SCALE: 1"=80'	EXHIBIT "K"
DATE: 11/30/2011	SHEET 10 of 15



**WILLIAM H. SMITH
& ASSOCIATES P.C.**

SURVEYING CONSULTANTS
550 EAST SECOND NORTH PHONE: 307-875-3638
GREEN RIVER, WY 307-875-3639
www.whsmithpc.com

DRAWN BY: BW	CHECKED BY: RAW
PROJECT NO: 762302H	JOB NO: 2011001
REVISIONS:	

CONFIDENTIALITY NOTES:
The information contained in this plat is legally privileged and confidential information intended only for the use of the recipients. If you are not the intended recipients, you are hereby notified that any use, dissemination, distribution or copying of this information is strictly prohibited.

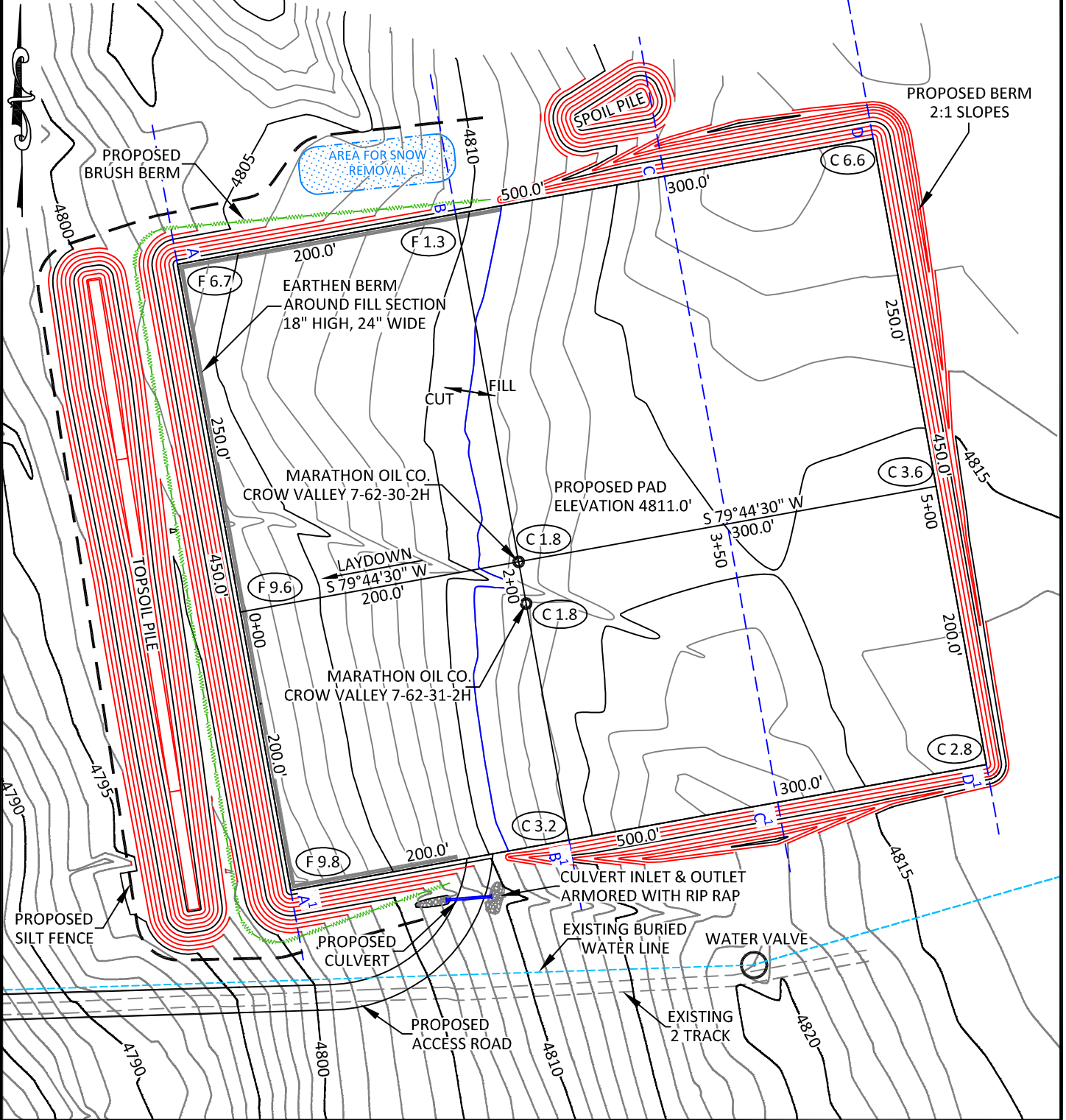
LOCATION:
CROW VALLEY
7-62-30-2H &
7-62-31-2H
SE1/4 SW1/4,
SECTION 30,
T 7 N, R 62 W,
6TH PM.
WELD COUNTY,
COLORADO

MARATHON OIL COMPANY
PO BOX 3128, HOUSTON TX, 77253
5555 SAN FELIPE, HOUSTON TX, 77056

PRODUCTION FACILITIES

SCALE: 1"=80'	EXHIBIT "L"
DATE: 11/30/2011	SHEET 11 of 15

SCALE: 1" = 100'
 CONTOUR
 INTERVAL 1'



CONFIDENTIALITY NOTES:
 The information contained in this plat is legally privileged and confidential information intended only for the use of the recipients. If you are not the intended recipients, you are hereby notified that any use, dissemination, distribution or copying of this information is strictly prohibited.

WILLIAM H. SMITH & ASSOCIATES P.C.
 SURVEYING CONSULTANTS
 550 EAST SECOND NORTH PHONE: 307-875-3638
 GREEN RIVER, WY 307-875-3639
 www.whsmithpc.com

DRAWN BY: BW CHECKED BY: RAW
 PROJECT NO: 762302H JOB NO: 2011001
 REVISIONS: LAL 12/08/11 UPDATE C/F

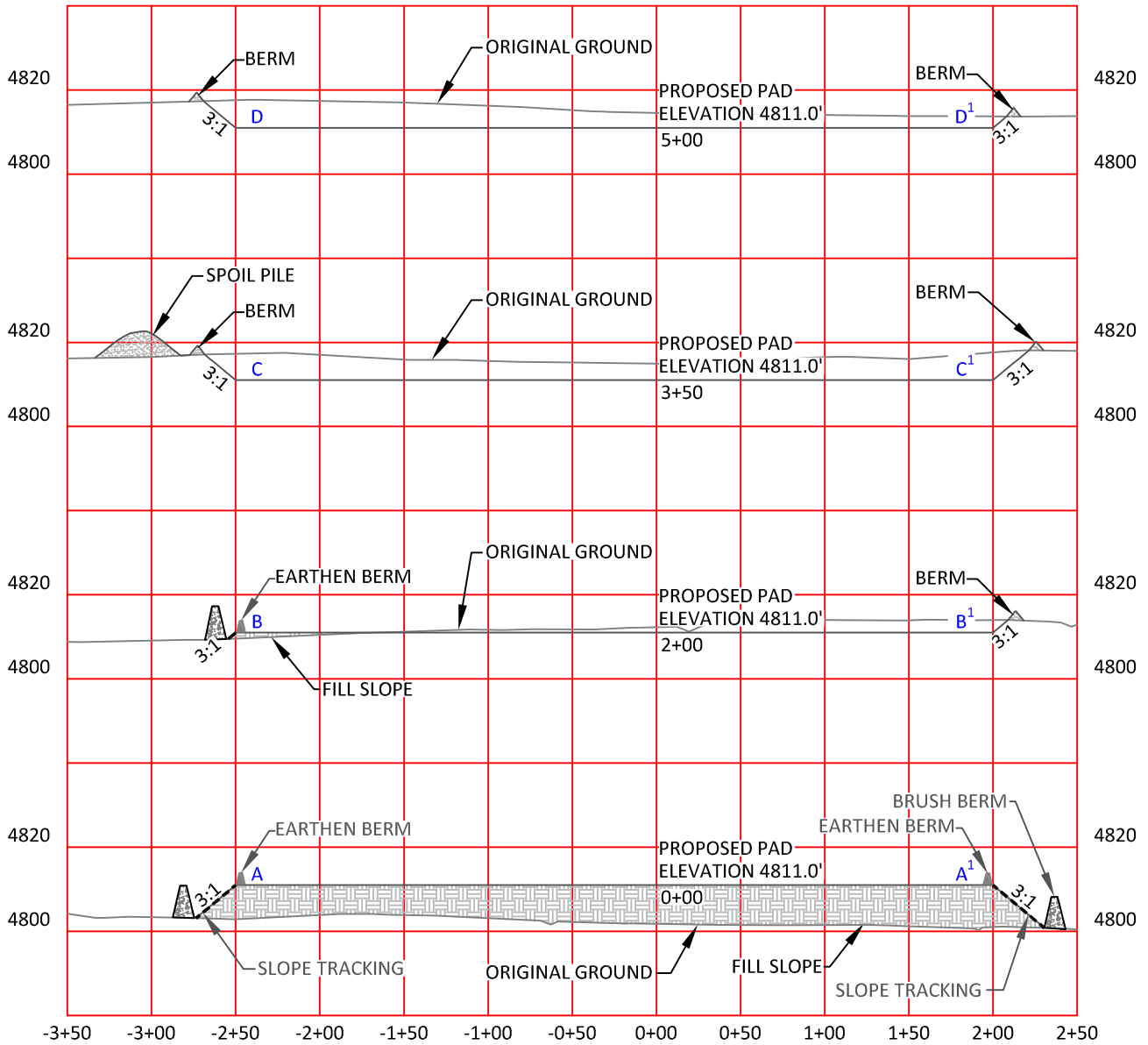
LEGEND	
SILT FENCE	— — — — —
BRUSH BERM	— — — — —

LOCATION:
 CROW VALLEY
 7-62-30-2H &
 7-62-31-2H
 SE1/4 SW1/4,
 SECTION 30,
 T 7 N, R 62 W,
 6TH PM.
 WELD COUNTY,
 COLORADO

MARATHON OIL COMPANY
 PO BOX 3128, HOUSTON TX, 77253
 5555 SAN FELIPE, HOUSTON TX, 77056

STORM WATER PREVENTION PLAN

SCALE: 1" = 100' EXHIBIT "M"
 DATE: 11/30/2011 SHEET 12 of 15



HORIZONTAL SCALE: 1"=100'
 VERTICAL SCALE: 1"=40'



**WILLIAM H. SMITH
& ASSOCIATES P.C.**
 SURVEYING CONSULTANTS

550 EAST SECOND NORTH PHONE: 307-875-3638
 GREEN RIVER, WY 307-875-3639
 www.whsmithpc.com

DRAWN BY: BW	CHECKED BY: RAW
PROJECT NO: 762302H	JOB NO: 2011001
REVISIONS:	

CONFIDENTIALITY NOTES:
 The information contained in this plat is legally privileged and confidential information intended only for the use of the recipients. If you are not the intended recipients, you are hereby notified that any use, dissemination, distribution or copying of this information is strictly prohibited.

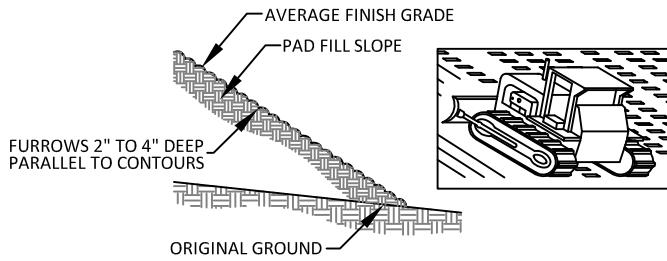
LOCATION:
 CROW VALLEY
 7-62-30-2H &
 7-62-31-2H
 SE1/4 SW1/4,
 SECTION 30,
 T 7 N, R 62 W,
 6TH PM.
 WELD COUNTY,
 COLORADO

MARATHON OIL COMPANY
 PO BOX 3128, HOUSTON TX, 77253
 5555 SAN FELIPE, HOUSTON TX, 77056

**STORM WATER PREVENTION
 CROSS SECTIONS**

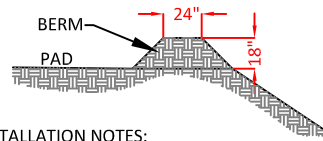
SCALE: AS NOTED	EXHIBIT "N"
DATE: 11/30/2011	SHEET 13 of 15

A. FILL SLOPE TRACKING DETAILS



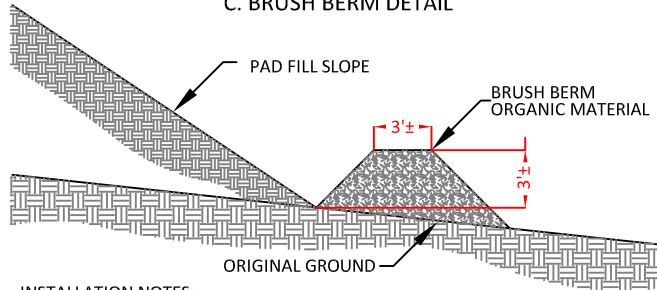
INSTALLATION NOTES:
 1. DISTURBED SURFACES SHALL BE ROUGHENED USING RIPPING OR TILLING EQUIPMENT ON THE CONTOURS OR TRACKING UP AND DOWN THE SLOPE USING EQUIPMENT TREADS

B. EARTHEN BERM DETAIL



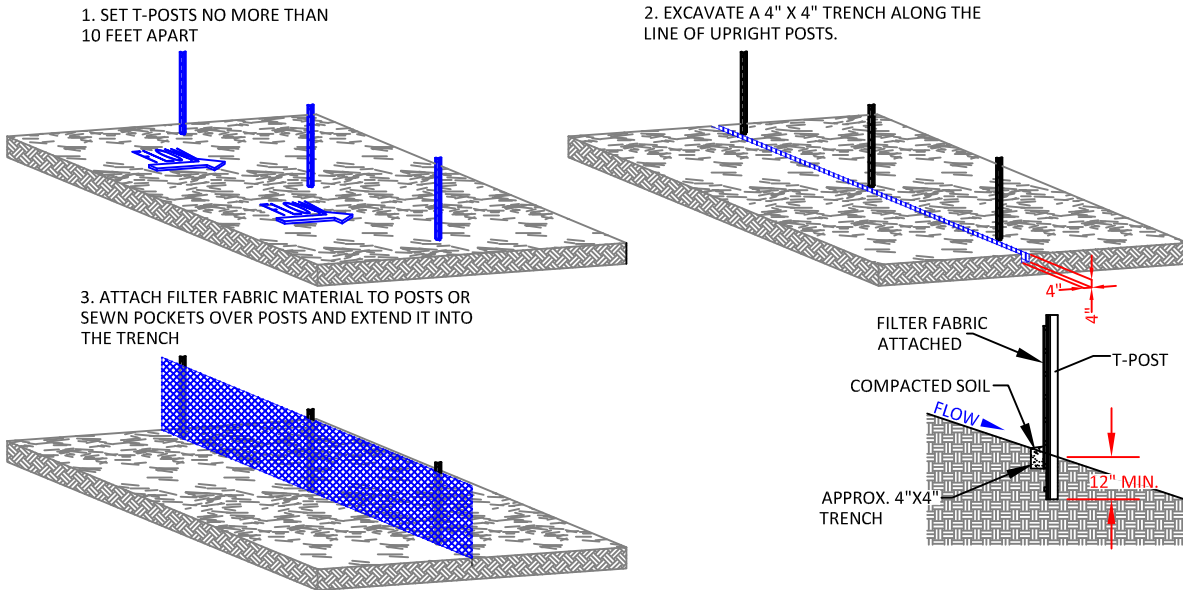
INSTALLATION NOTES:
 1. BERM SHALL BE CONSTRUCTED OF WELL COMPACTED GRANULAR MATERIAL.
 2. BERM SHALL BE CONSTRUCTED ON THE PERIMETER OF THE PAD IN ALL AREAS THAT COULD RECEIVE STORMWATER RUNOFF.
 3. DIMENSIONS ARE APPROXIMATE. FIELD CONDITIONS WILL DETERMINE ACTUAL DIMENSIONS OF STRUCTURE.

C. BRUSH BERM DETAIL



INSTALLATION NOTES:
 1. BERM TO BE CONSTRUCTED AFTER SITE HAS BEEN GRUBBED PRIOR TO PAD CONSTRUCTION.
 2. ONSITE ORGANIC MATERIAL TO BE PUSHED INTO BERM ON EDGE PERIMETER OF FILL SLOPE IN A MANNER NOT TO CREATE ADDITIONAL DISTURBANCE BEYOND THE CATCH LINE.
 3. BERM TO BE COMPACTED WITH FRONT END LOADER BUCKET OR SIMILAR METHOD TO ACHIEVE ADEQUATE COMPACTION.

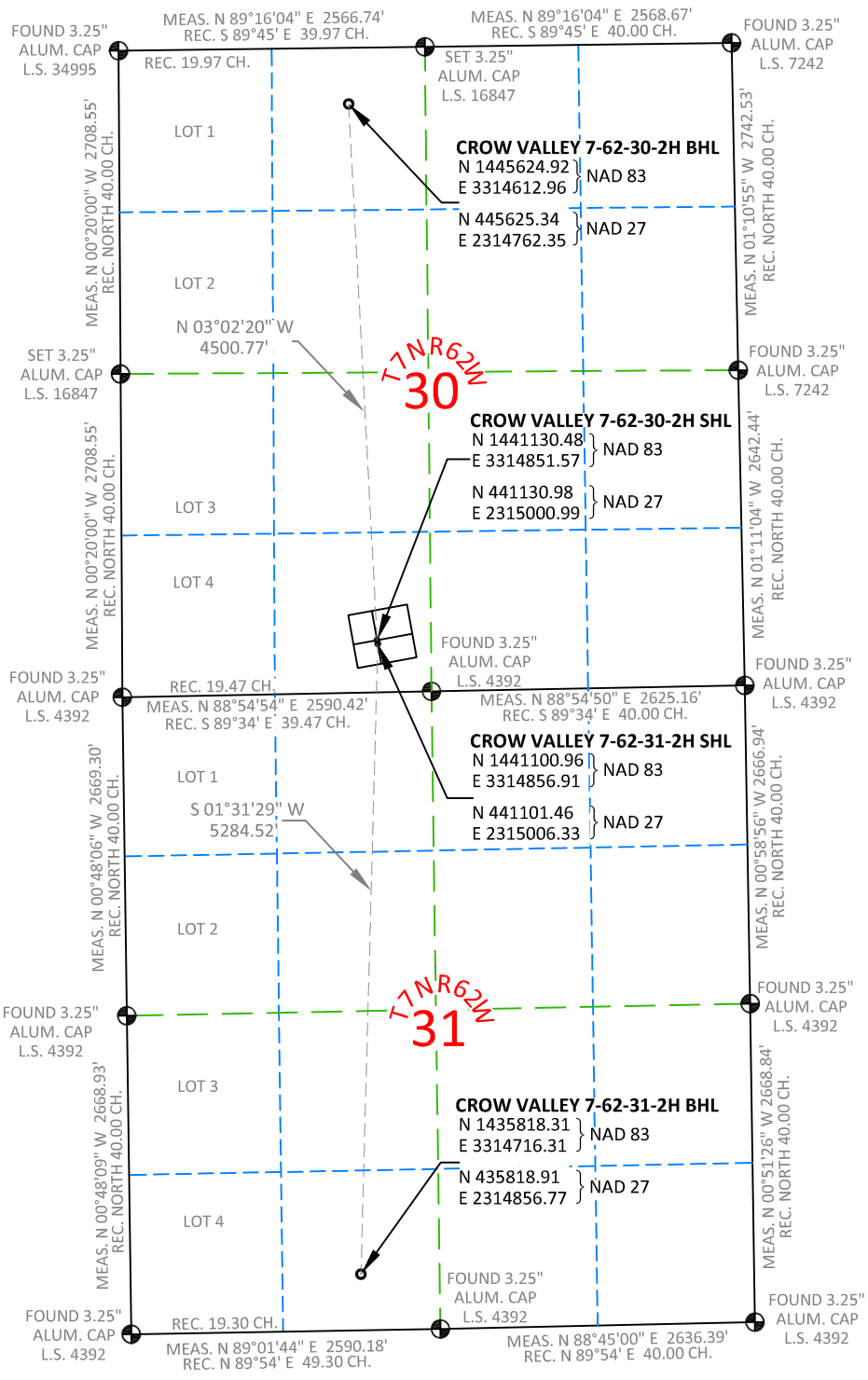
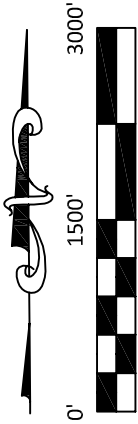
D. SILT FENCE DETAILS



CONFIDENTIALITY NOTES:

The information contained in this plat is legally privileged and confidential information intended only for the use of the recipients. If you are not the intended recipients, you are hereby notified that any use, dissemination, distribution or copying of this information is strictly prohibited.

	<p>WILLIAM H. SMITH & ASSOCIATES P.C. SURVEYING CONSULTANTS 550 EAST SECOND NORTH GREEN RIVER, WY PHONE: 307-875-3638 307-875-3639 www.whsmithpc.com</p>	<p>USED ON THIS SITE</p> <p>A: FILL SLOPE TRACKING B: EARTHEN BERM AT TOP OF SLOPE AROUND FILL SECTIONS C: BRUSH BERM AT TOE OF SLOPE AROUND FILL SECTIONS D: SILT FENCE</p>	<p>LOCATION: CROW VALLEY 7-62-30-2H & 7-62-31-2H SE1/4 SW1/4, SECTION 30, T 7 N, R 62 W, 6TH PM. WELD COUNTY, COLORADO</p>	<p>MARATHON OIL COMPANY PO BOX 3128, HOUSTON TX, 77253 5555 SAN FELIPE, HOUSTON TX, 77056</p>
	<p>DRAWN BY: BW PROJECT NO: 762302H REVISIONS:</p>	<p>CHECKED BY: RAW JOB NO: 2011001</p>	<p>STORM WATER PREVENTION DETAILS</p> <p>SCALE: NOT TO SCALE DATE: 11/30/2011</p>	<p>EXHIBIT "O" SHEET 14 of 15</p>



NOTES:

- All bearings and distances are **GRID**, based on the Colorado State Plane Coordinate System, North Zone, North American Datum 1983 from GPS observations occupying a WHS control point (5/8" rebar) and having the Location and Elevation derived from an Opus Solution.
- Vertical Datum used is of NAVD 88.
- Record Bearings and Distances as shown are based on the General Land Office Survey plat approved on the 16th day of December 1872.

WILLIAM H. SMITH & ASSOCIATES P.C.
SURVEYING CONSULTANTS
 550 EAST SECOND NORTH PHONE: 307-875-3638
 GREEN RIVER, WY 307-875-3639
 www.whsmithpc.com

CONFIDENTIALITY NOTES:
 The information contained in this plat is legally privileged and confidential information intended only for the use of the recipients. If you are not the intended recipients, you are hereby notified that any use, dissemination, distribution or copying of this information is strictly prohibited.

LOCATION:
 CROW VALLEY
 7-62-30-2H &
 7-62-31-2H
 SE1/4 SW1/4,
 SECTION 30,
 T 7 N, R 62 W,
 6TH PM.
 WELD COUNTY,
 COLORADO

MARATHON OIL COMPANY
 PO BOX 3128, HOUSTON TX, 77253
 5555 SAN FELIPE, HOUSTON TX, 77056

MULTI WELL PAD

SCALE: 1"=1500'	EXHIBIT "P"
DATE: 11/30/2011	SHEET 15 OF 15