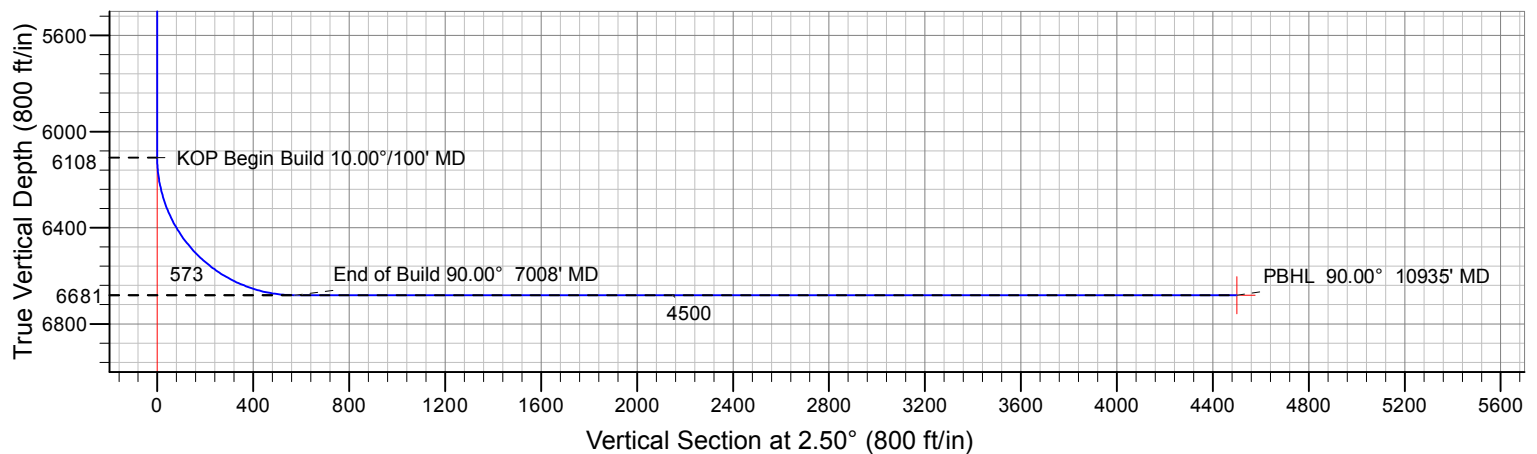
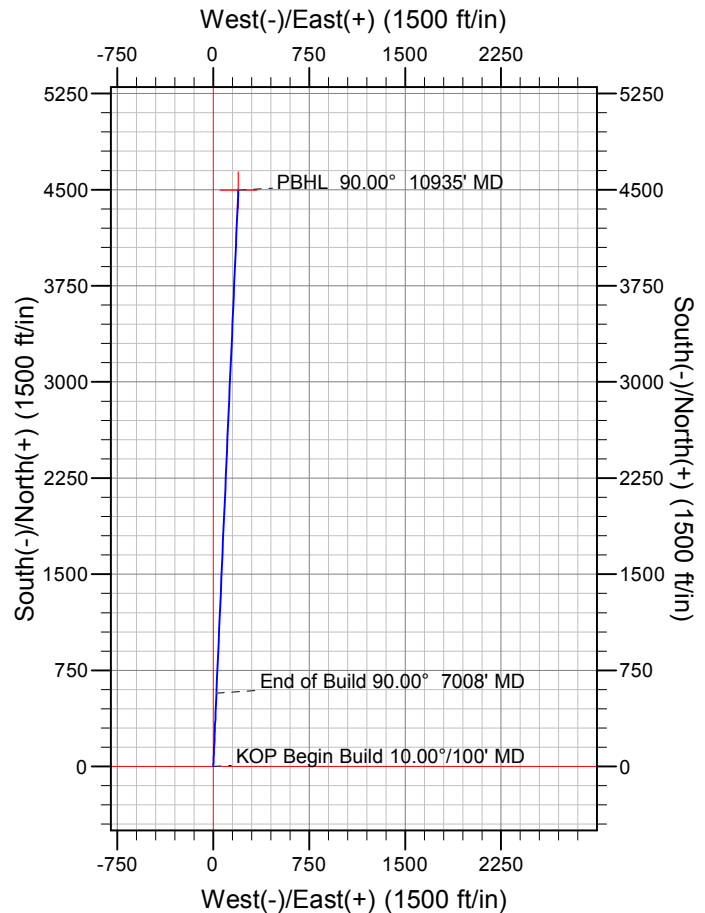
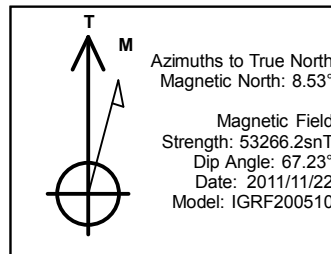
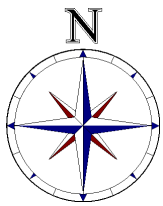


Weld County, Colorado



gyro/data



Design #1											
Surface Location											
Northing				Easting		Latitude		Longitude			
1441271.40				3327775.03		40° 32' 19.345 N		104° 19' 14.398 W			
Sec	MD	Inc	Azi	TVD	+N/-S	+E/-W	Dleg	TFace	VSect	Target	
1	0.0			0.0	0.0	0.0	0.00	0.00	0.0		
2	6106.0	0.00	0.00	6106.0	0.0	0.0	0.00	0.00	0.0		
3	6108.0	0.00	0.00	6108.0	0.0	0.0	0.00	0.00	0.0		
4	7008.0	90.00	2.50	6681.0	572.4	25.0	10.00	2.50	573.0		
5	10935.3	90.00	2.50	6681.0	4495.9	196.5	0.00	0.00	4500.2	PBHL	

To convert a Magnetic Direction to a Grid Direction, Add 7.77°