

CONFIDENTIALITY NOTES:
 The information contained in this plat is legally privileged and confidential information intended only for the use of the recipients. If you are not the intended recipients, you are hereby notified that any use, dissemination, distribution or copying of this information is strictly prohibited.



**WILLIAM H. SMITH
& ASSOCIATES P.C.**
 SURVEYING CONSULTANTS
 550 EAST SECOND NORTH PHONE: 307-875-3638
 GREEN RIVER, WY 307-875-3639
 www.whsmithpc.com

DRAWN BY: BW CHECKED BY: RAW
 PROJECT NO: 762284H JOB NO: 2011001
 REVISIONS:

LEGEND

ACCESS ROAD == == ==
 EXISTING ROAD == ==
 EXISTING 2-TRACK --- -- -- --
 SECTION LINE —————

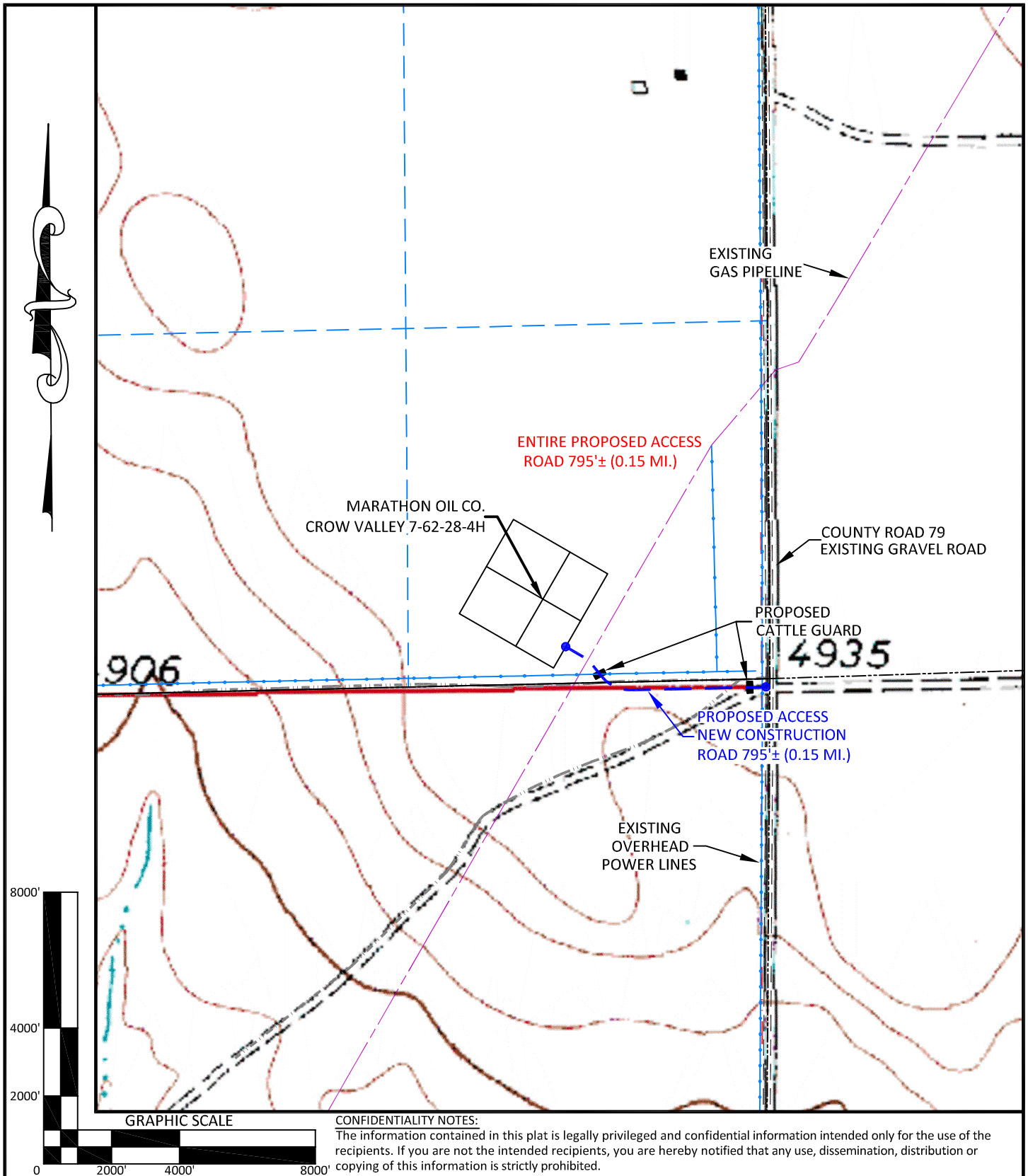
LOCATION:

CROW VALLEY
 7-62-28-4H
 WITHIN SE1/4
 SE1/4 SECTION 28,
 T 7 N, R 62 W,
 6TH PM.
 WELD COUNTY,
 COLORADO

MARATHON OIL COMPANY
 PO BOX 3128, HOUSTON TX, 77253
 5555 SAN FELIPE, HOUSTON TX, 77056

ACCESS ROAD ENTRANCE

SCALE: 1"=30' EXHIBIT "A"
 DATE: 1/13/2012 SHEET 1 OF 1



**WILLIAM H. SMITH
& ASSOCIATES P.C.**

SURVEYING CONSULTANTS
550 EAST SECOND NORTH PHONE: 307-875-3638
GREEN RIVER, WY 307-875-3639
www.whsmithpc.com

DRAWN BY: BW

CHECKED BY: RAW

PROJECT NO: 762284H

JOB NO: 2011001

REVISIONS:

LEGEND

PROPOSED ACCESS ————
EXISTING 2-TRACK ————
EXISTING ROAD ————
1/16TH LINE ————
1/4 LINE ————
SECTION LINE ————

LOCATION:

CROW VALLEY
7-62-28-4H
WITHIN SE1/4
SE1/4 SECTION 28,
T 7 N, R 62 W,
6TH PM.
WELD COUNTY,
COLORADO

MARATHON OIL COMPANY
PO BOX 3128, HOUSTON TX, 77253
5555 SAN FELIPE, HOUSTON TX, 77056

ACCESS ROAD MAP

SCALE: 1"=500'

EXHIBIT "E"

DATE: 1/13/2012

SHEET 4 OF 14