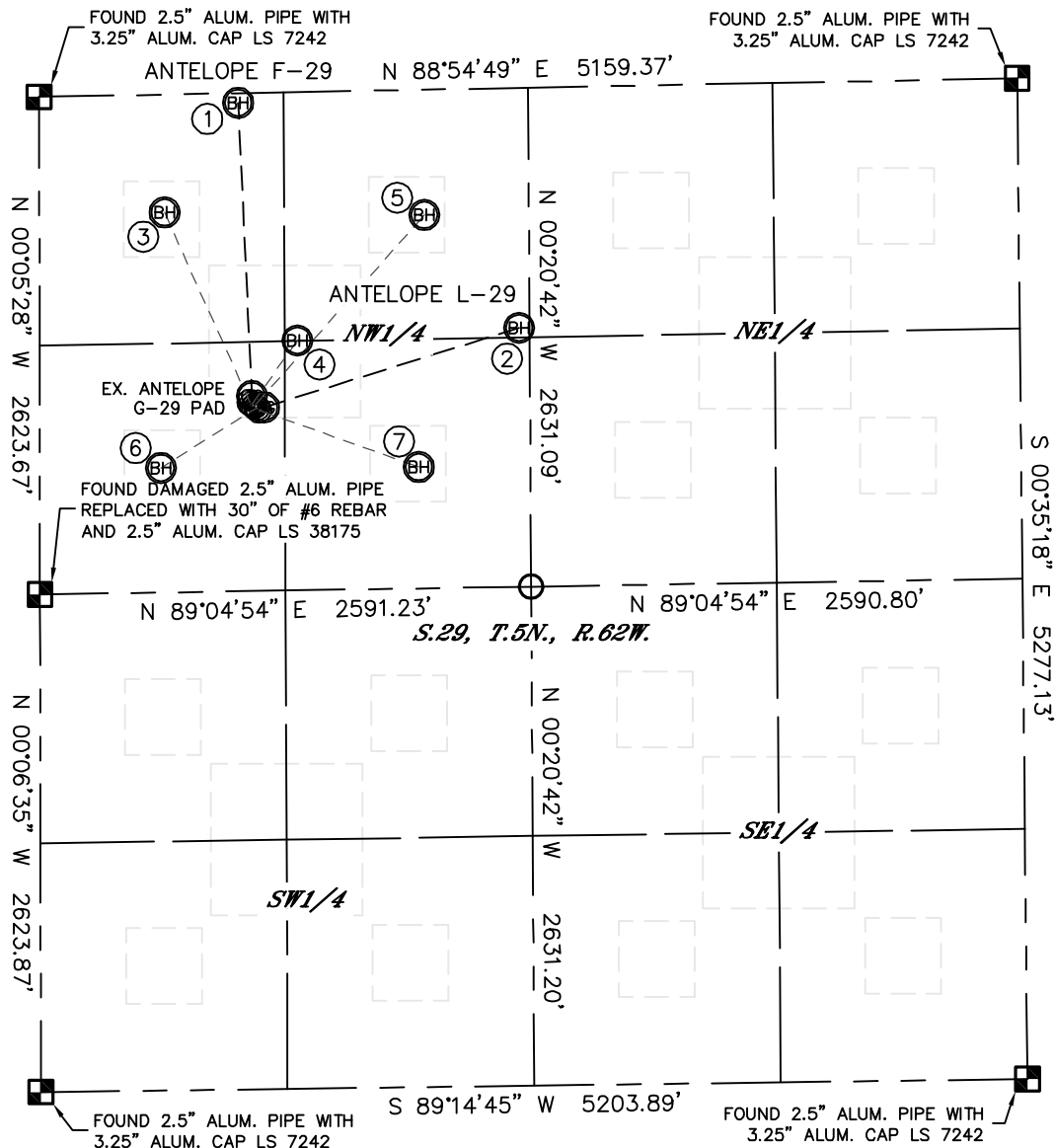


MULTI-WELL PLAN

ANTELOPE G-29 PAD

THIS MAP DOES NOT REPRESENT A BOUNDARY SURVEY



SECTION: 29
TOWNSHIP: 5N
RANGE: 62W

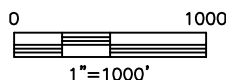


- | | | | | |
|--|--|--|--|---|
| <p>①
-BOTTOM HOLE-
ANTELOPE F-29
50' FNL
1050' FWL
LAT: 40.37770°N
LONG: 104.35294°W
1/4,1/4: NW1/4NW1/4</p> | <p>②
-BOTTOM HOLE-
ANTELOPE L-29
1265' FNL
2530' FWL
LAT: 40.37439°N
LONG: 104.34768°W
1/4,1/4: NE1/4NW1/4</p> | <p>③
-BOTTOM HOLE-
EX. ANTELOPE 11-29
FROM SURFACE HOLE:
1006' N, 437' W
(PER BONANZA CREEK)
1/4,1/4: NW1/4NW1/4</p> | <p>④
-BOTTOM HOLE-
EX. ANTELOPE G-29
FROM SURFACE HOLE:
333' N, 242' E
(PER BONANZA CREEK)
1/4,1/4: NE1/4NW1/4</p> | <p>⑤
-BOTTOM HOLE-
EX. ANTELOPE 21-29
FROM SURFACE HOLE:
996' N, 910' E
(PER BONANZA CREEK)
1/4,1/4: NE1/4NW1/4</p> |
|--|--|--|--|---|

- | | |
|---|---|
| <p>⑥
-BOTTOM HOLE-
EX. ANTELOPE 12-29
FROM SURFACE HOLE:
309' S, 509' W
(PER BONANZA CREEK)
1/4,1/4: SW1/4NW1/4</p> | <p>⑦
-BOTTOM HOLE-
EX. ANTELOPE 22-29
FROM SURFACE HOLE:
312' S, 841' E
(PER BONANZA CREEK)
1/4,1/4: SE1/4NW1/4</p> |
|---|---|

LEGEND

-  = ALIQUOT MONUMENT AS DESCRIBED
 = CALCULATED POSITION



DATE: 12/27/11
PROJECT#: 2011349

DATE: 12/27/11
PROJECT#: 2011349