

MARATHON OIL CO.
FRENCH LAKE 3-63-22-1H
 LOCATED WITHIN NW/4 NW/4 OF SECTION 22 T3N R63W
 OF THE 6TH P.M., WELD COUNTY, COLORADO

PHOTO "A" TAKEN FROM THE SOUTH LOOKING NORTH



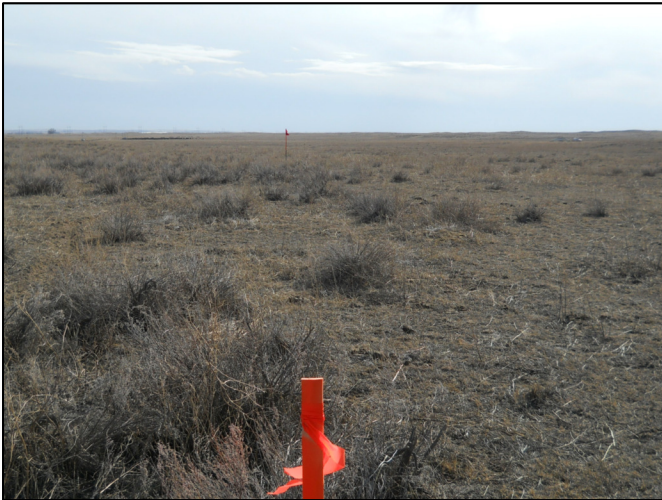
FRENCH LAKE 3-63-22-1H North.jpg 2/8/2012

PHOTO "B" TAKEN FROM THE WEST LOOKING EAST



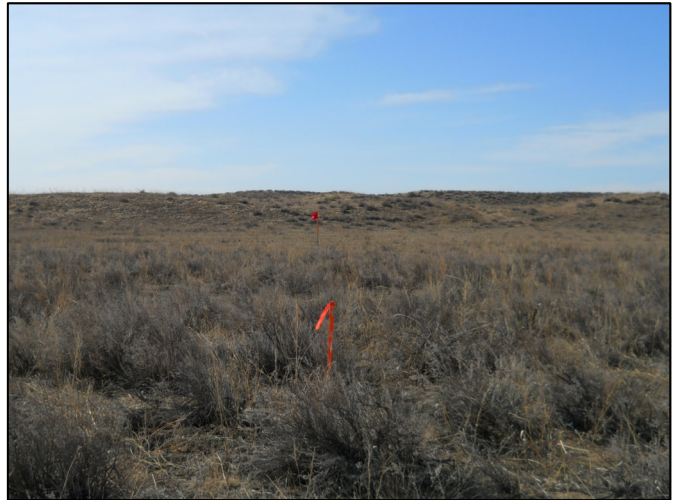
FRENCH LAKE 3-63-22-1H East.jpg 2/8/2012

PHOTO "C" TAKEN FROM THE NORTH LOOKING SOUTH



FRENCH LAKE 3-63-22-1H South.jpg 2/8/2012



PHOTO "D" TAKEN FROM THE EAST LOOKING WEST



FRENCH LAKE 3-63-22-1H West.jpg 2/8/2012

CONFIDENTIALITY NOTES:

The information contained in this plat is legally privileged and confidential information intended only for the use of the recipients. If you are not the intended recipients, you are hereby notified that any use, dissemination, distribution or copying of this information is strictly prohibited.

 <div>WILLIAM H. SMITH & ASSOCIATES P.C. SURVEYING CONSULTANTS 550 EAST SECOND NORTH PHONE: 307-875-3638 GREEN RIVER, WY 307-875-3639 www.whsmithpc.com</div>	<div>LEGEND</div> <div></div>		<div>LOCATION: FRENCH LAKE 3-63-22-1H WITHIN THE NW/4 NW/4 SECTION 22, T 3 N, R 63 W, 6TH PM. WELD COUNTY, COLORADO</div>		<div>MARATHON OIL COMPANY PO BOX 3128, HOUSTON TX, 77253 5555 SAN FELIPE, HOUSTON TX, 77056</div>	
					<div>WELL LOCATION PICTURES</div>	
	<div>DRAWN BY: BW CHECKED BY: RAW PROJECT NO: 363221H JOB NO: 2011001 REVISIONS:</div>				<div>SCALE: N/A DATE: 2/8/2012</div>	<div>EXHIBIT "B" SHEET 1 OF 14</div>