

CONFIDENTIALITY NOTES:

The information contained in this plat is legally privileged and confidential information intended only for the use of the recipients. If you are not the intended recipients, you are hereby notified that any use, dissemination, distribution or copying of this information is strictly prohibited.



**WILLIAM H. SMITH
& ASSOCIATES P.C.**
SURVEYING CONSULTANTS
550 EAST SECOND NORTH PHONE: 307-875-3638
GREEN RIVER, WY 307-875-3639
www.whsmithpc.com

LEGEND

400' PERIMETER ---
PROPOSED ACCESS ---
EXISTING 2-TRACK ---
BURIED WATERLINE ---
EXISTING OHP ---
SECTION LINE ---
1/4 LINE ---

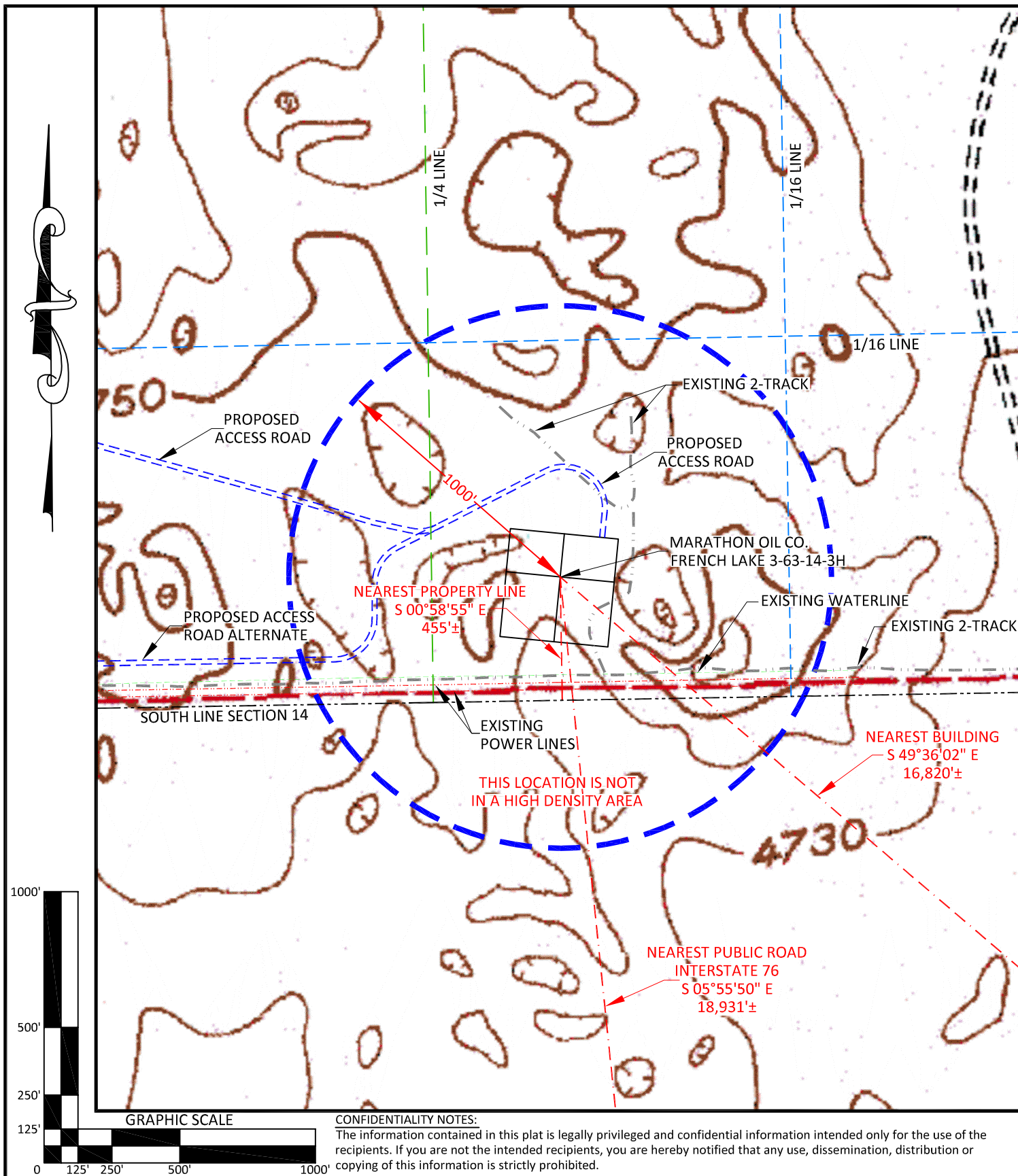
LOCATION:

FRENCH LAKE
3-63-14-3H
WITHIN THE SW/4
SE/4, SECTION 14,
T 3 N, R 63 W,
6TH PM.
WELD COUNTY,
COLORADO

MARATHON OIL COMPANY
PO BOX 3128, HOUSTON TX, 77253
5555 SAN FELIPE, HOUSTON TX, 77056

LOCATION DRAWING

SCALE: 1"=200' EXHIBIT "C"
DATE: 2/8/2012 SHEET 2 OF 14



**WILLIAM H. SMITH
& ASSOCIATES P.C.**
SURVEYING CONSULTANTS
550 EAST SECOND NORTH PHONE: 307-875-3638
GREEN RIVER, WY 307-875-3639
www.whsmithpc.com

DRAWN BY: BW	CHECKED BY: RAW
PROJECT NO: 363143H	JOB NO: 2011001
REVISIONS:	

LEGEND	
1000' RADIUS	
PROPOSED ACCESS	
EXISTING 2-TRACK	
BURIED WATERLINE	
1/16 LINE	
1/4 LINE	
SECTION LINE	

LOCATION:

FRENCH LAKE
3-63-14-3H
WITHIN THE SW/4
SE/4, SECTION 14,
T 3 N, R 63 W,
6TH PM.
WELD COUNTY,
COLORADO

MARATHON OIL COMPANY
PO BOX 3128, HOUSTON TX, 77253
5555 SAN FELIPE, HOUSTON TX, 77056

CULTURE MAP

SCALE: 1"=500'	EXHIBIT "H"
DATE: 2/8/2012	SHEET 7 OF 14