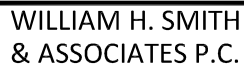


- Elevation of pad shown on plans are to constructed pad without final gravel padding placement. Depth, volume, and padding material to be determined by operator.
- The information contained in this plat is legally privileged and confidential information intended only for the use of the recipients. If you are not the intended recipients, you are hereby notified that any use, dissemination, distribution or copying of this information is strictly prohibited.



550 EAST SECOND NORTH      PHONE: 307-875-3638  
GREEN RIVER, WY      307-875-3639  
[www.whsmithpc.com](http://www.whsmithpc.com)

---

CUT SLOPE:	3:1
FILL SLOPE:	3:1
TOTAL CUT:	11,009 CU. YDS.
TOTAL FILL:	6,779 CU. YDS.
TOP SOIL AT 6"	3,289 CU. YDS.
SPOIL	941 CU. YDS.
DISTURBED AREA	177,611 SQ. FT.
DISTURBED AREA	4.08 ACRES

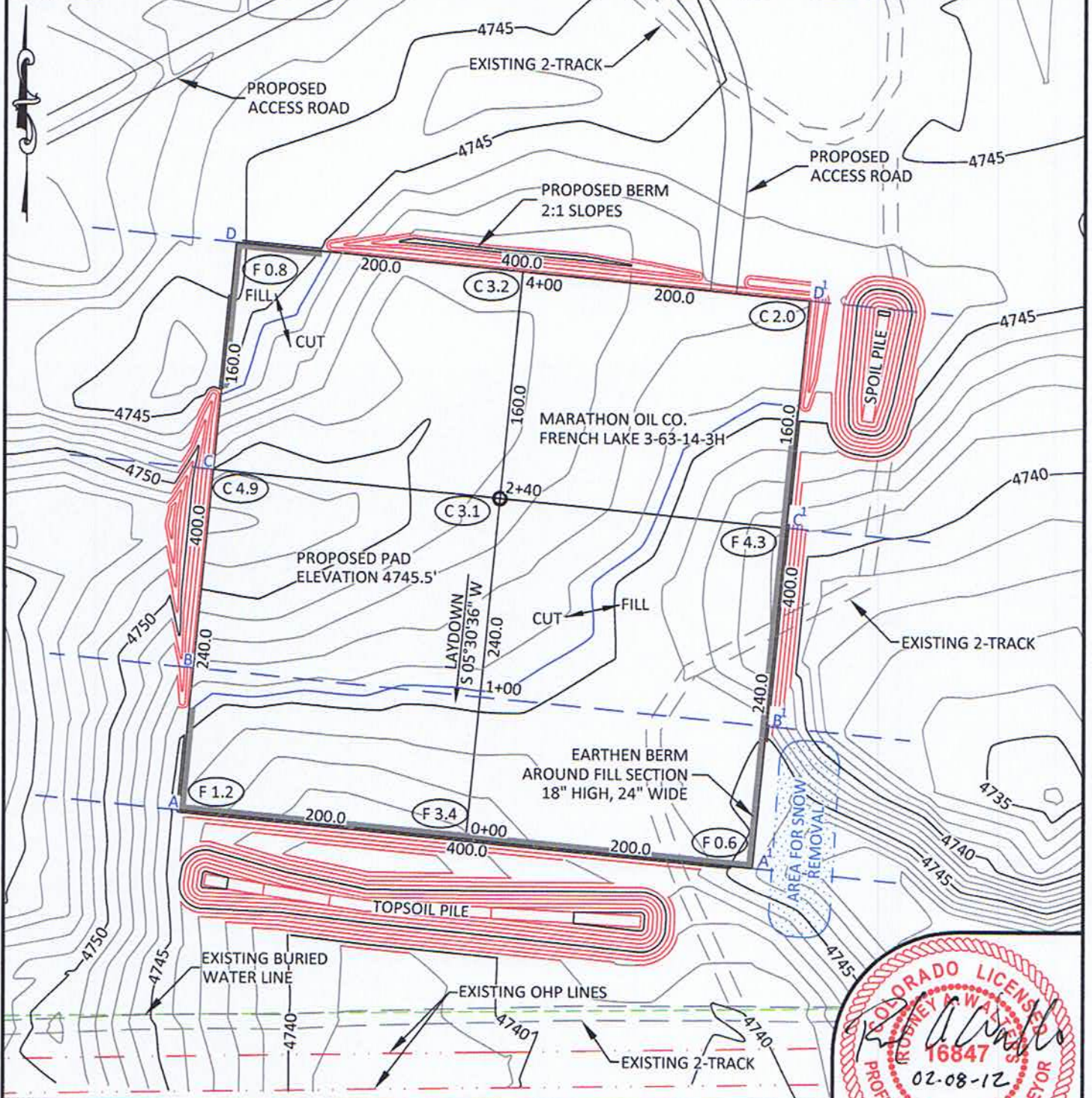
FRENCH LAKE  
3-63-14-3H  
WITHIN THE SW/4  
SE/4, SECTION 14,  
T 3 N, R 63 W,  
6TH PM.  
WELD COUNTY,  
COLORADO

PO BOX 3128, HOUSTON TX, 77253  
5555 SAN FELIPE, HOUSTON TX, 77056

455' FSL	2162' FEL
SCALE: 1"=100'	EXHIBIT "I"
DATE: 2/8/2012	SHEET 8 OF 14



SCALE: 1"= 100'  
CONTOUR  
INTERVAL 1'



**NOTES:**

- Elevation of pad shown on plans are to constructed pad without final gravel padding placement. Depth, volume, and padding material to be determined by operator.
- The information contained in this plat is legally privileged and confidential information intended only for the use of the recipients. If you are not the intended recipients, you are hereby notified that any use, dissemination, distribution or copying of this information is strictly prohibited.



**WILLIAM H. SMITH  
& ASSOCIATES P.C.**  
SURVEYING CONSULTANTS  
350 EAST SECOND NORTH  
GREEN RIVER, WY 82430  
PHONE: 307-875-3638  
307-875-3639  
www.wsmithpc.com

**CONSTRUCTION DATA**

CUT SLOPE:	3:1
FILL SLOPE:	3:1
TOTAL CUT:	11,009 CU. YDS.
TOTAL FILL:	6,779 CU. YDS.
TOP SOIL AT 6"	3,289 CU. YDS.
SPOIL:	941 CU. YDS.
DISTURBED AREA	177,611 SQ. FT.
DISTURBED AREA	4.08 ACRES

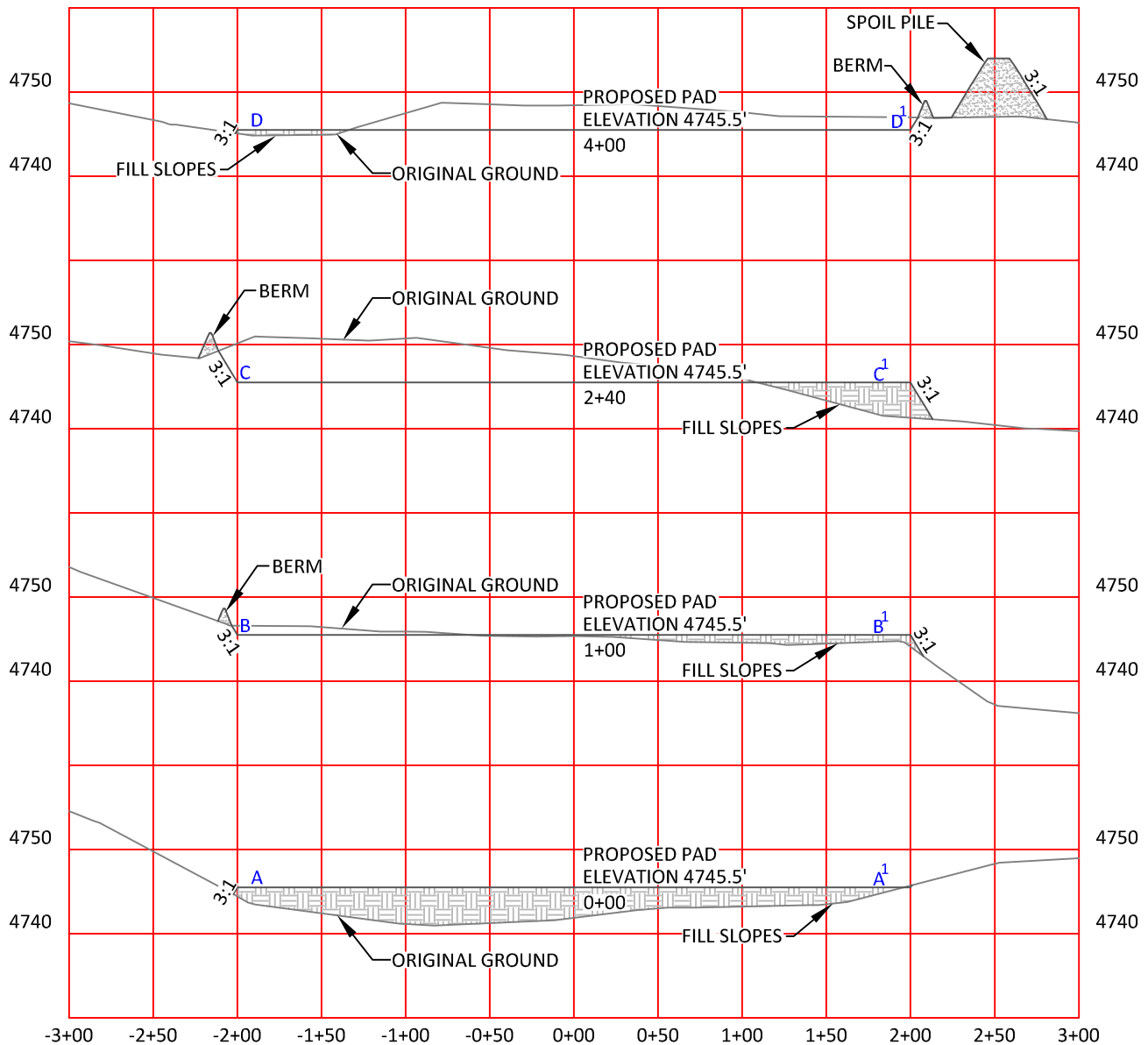
**LOCATION:**

FRENCH LAKE  
3-63-14-3H  
WITHIN THE SW/4  
SE/4, SECTION 14,  
T 3 N, R 63 W,  
6TH PM.  
WELD COUNTY,  
COLORADO

**MARATHON OIL COMPANY**  
PO BOX 3128, HOUSTON TX, 77253  
5555 SAN FELIPE, HOUSTON TX, 77056

**CONSTRUCTION LAYOUT**

455' FSL	2162' FEL
SCALE: 1"=100'	EXHIBIT "I"
DATE: 2/8/2012	SHEET 8 OF 14



HORIZONTAL SCALE: 1"=100' - VERTICAL SCALE: 1"=20'

**NOTES:**

- Elevation of pad shown on plans are to constructed pad without final gravel padding placement. Depth, volume, and padding material to be determined by operator.
- The information contained in this plat is legally privileged and confidential information intended only for the use of the recipients. If you are not the intended recipients, you are hereby notified that any use, dissemination, distribution or copying of this information is strictly prohibited.



**WILLIAM H. SMITH  
& ASSOCIATES P.C.**  
SURVEYING CONSULTANTS

550 EAST SECOND NORTH PHONE: 307-875-3638  
GREEN RIVER, WY 307-875-3639  
www.whsmithpc.com

DRAWN BY: BW CHECKED BY: RAW  
PROJECT NO: 363143H JOB NO: 2011001  
REVISIONS:

**CONSTRUCTION DATA**

CUT SLOPE:	3:1
FILL SLOPE:	3:1
TOTAL CUT:	11,009 CU. YDS.
TOTAL FILL:	6,779 CU. YDS.
TOP SOIL AT 6"	3,289 CU. YDS.
SPOIL	941 CU. YDS.
DISTURBED AREA	177,611 SQ. FT.
DISTURBED AREA	4.08 ACRES

**LOCATION:**

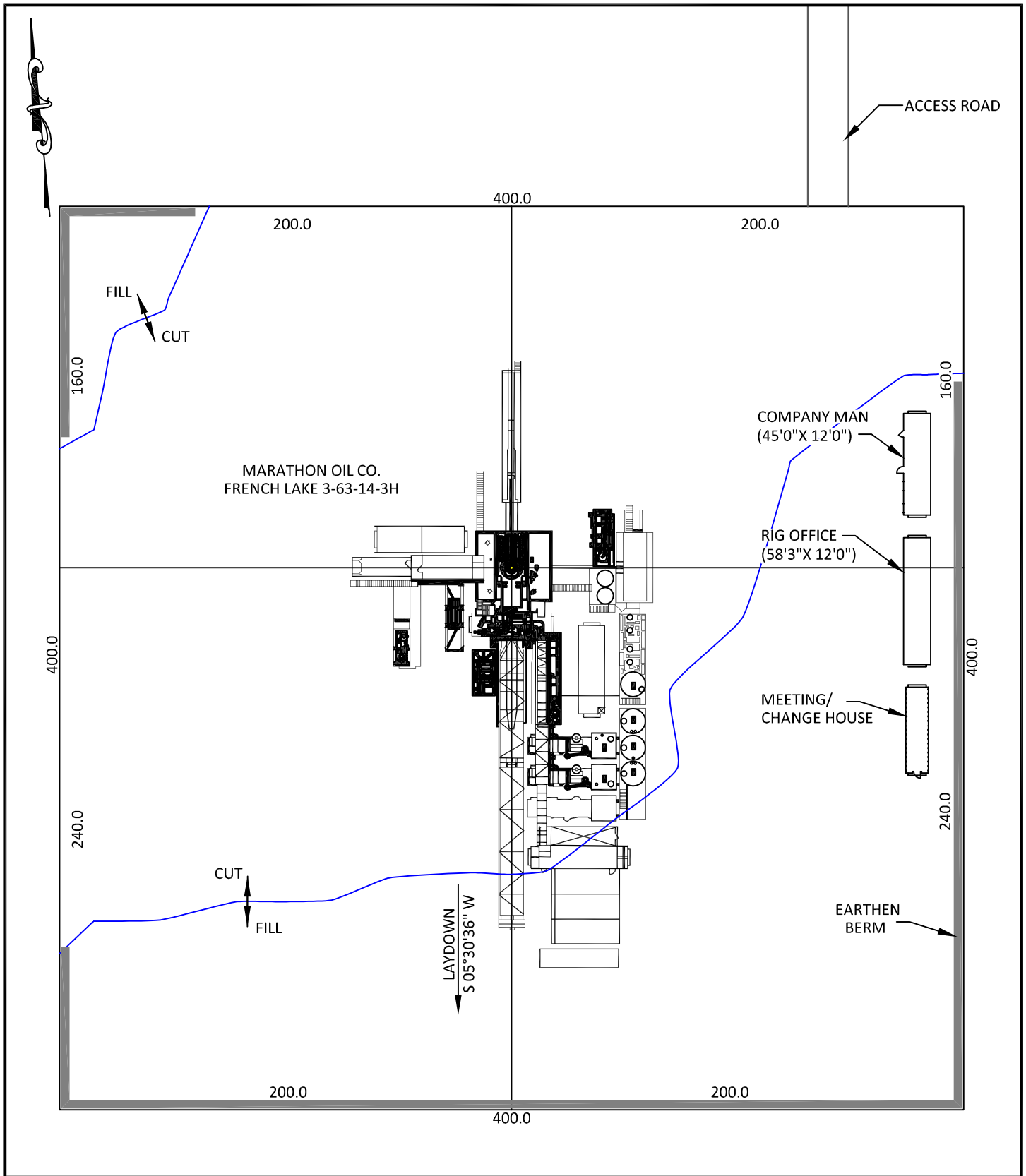
FRENCH LAKE  
3-63-14-3H  
WITHIN THE SW/4  
SE/4, SECTION 14,  
T 3 N, R 63 W,  
6TH PM.  
WELD COUNTY,  
COLORADO

**MARATHON OIL COMPANY**  
PO BOX 3128, HOUSTON TX, 77253  
5555 SAN FELIPE, HOUSTON TX, 77056

**CONSTRUCTION LAYOUT  
CROSS SECTIONS**

SCALE: AS NOTED EXHIBIT "J"  
DATE: 2/8/2012 SHEET 9 OF 14





**WILLIAM H. SMITH  
& ASSOCIATES P.C.**

**SURVEYING CONSULTANTS**  
550 EAST SECOND NORTH PHONE: 307-875-3638  
GREEN RIVER, WY 307-875-3639  
www.whsmithpc.com

DRAWN BY: BW	CHECKED BY: RAW
PROJECT NO: 363143H	JOB NO: 2011001
REVISIONS:	

**CONFIDENTIALITY NOTES:**

The information contained in this plat is legally privileged and confidential information intended only for the use of the recipients. If you are not the intended recipients, you are hereby notified that any use, dissemination, distribution or copying of this information is strictly prohibited.

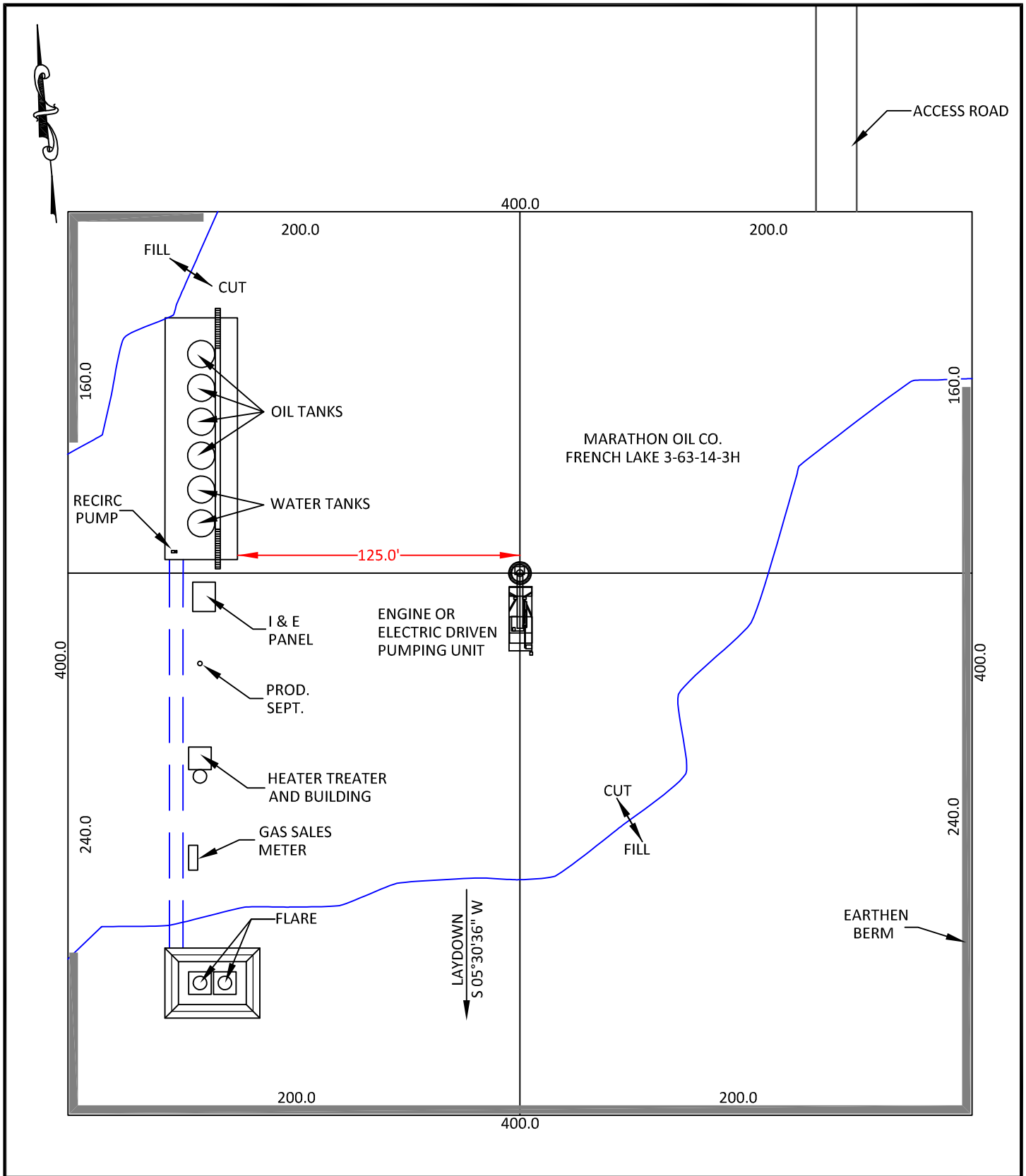
**LOCATION:**

FRENCH LAKE  
3-63-14-3H  
WITHIN THE SW/4  
SE/4, SECTION 14,  
T 3 N, R 63 W,  
6TH PM.  
WELD COUNTY,  
COLORADO

**MARATHON OIL COMPANY**  
PO BOX 3128, HOUSTON TX, 77253  
5555 SAN FELIPE, HOUSTON TX, 77056

**DRILLING FACILITIES**

SCALE: 1"=60'	EXHIBIT "K"
DATE: 2/8/2012	SHEET 10 OF 14



**WILLIAM H. SMITH  
& ASSOCIATES P.C.**

**SURVEYING CONSULTANTS**  
550 EAST SECOND NORTH PHONE: 307-875-3638  
GREEN RIVER, WY 307-875-3639  
www.whsmithpc.com

DRAWN BY: BW CHECKED BY: RAW

PROJECT NO: 363143H JOB NO: 2011001

REVISIONS:

**CONFIDENTIALITY NOTES:**

The information contained in this plat is legally privileged and confidential information intended only for the use of the recipients. If you are not the intended recipients, you are hereby notified that any use, dissemination, distribution or copying of this information is strictly prohibited.

**LOCATION:**

FRENCH LAKE  
3-63-14-3H  
WITHIN THE SW/4  
SE/4, SECTION 14,  
T 3 N, R 63 W,  
6TH PM.  
WELD COUNTY,  
COLORADO

**MARATHON OIL COMPANY**  
PO BOX 3128, HOUSTON TX, 77253  
5555 SAN FELIPE, HOUSTON TX, 77056

**PRODUCTION FACILITIES**

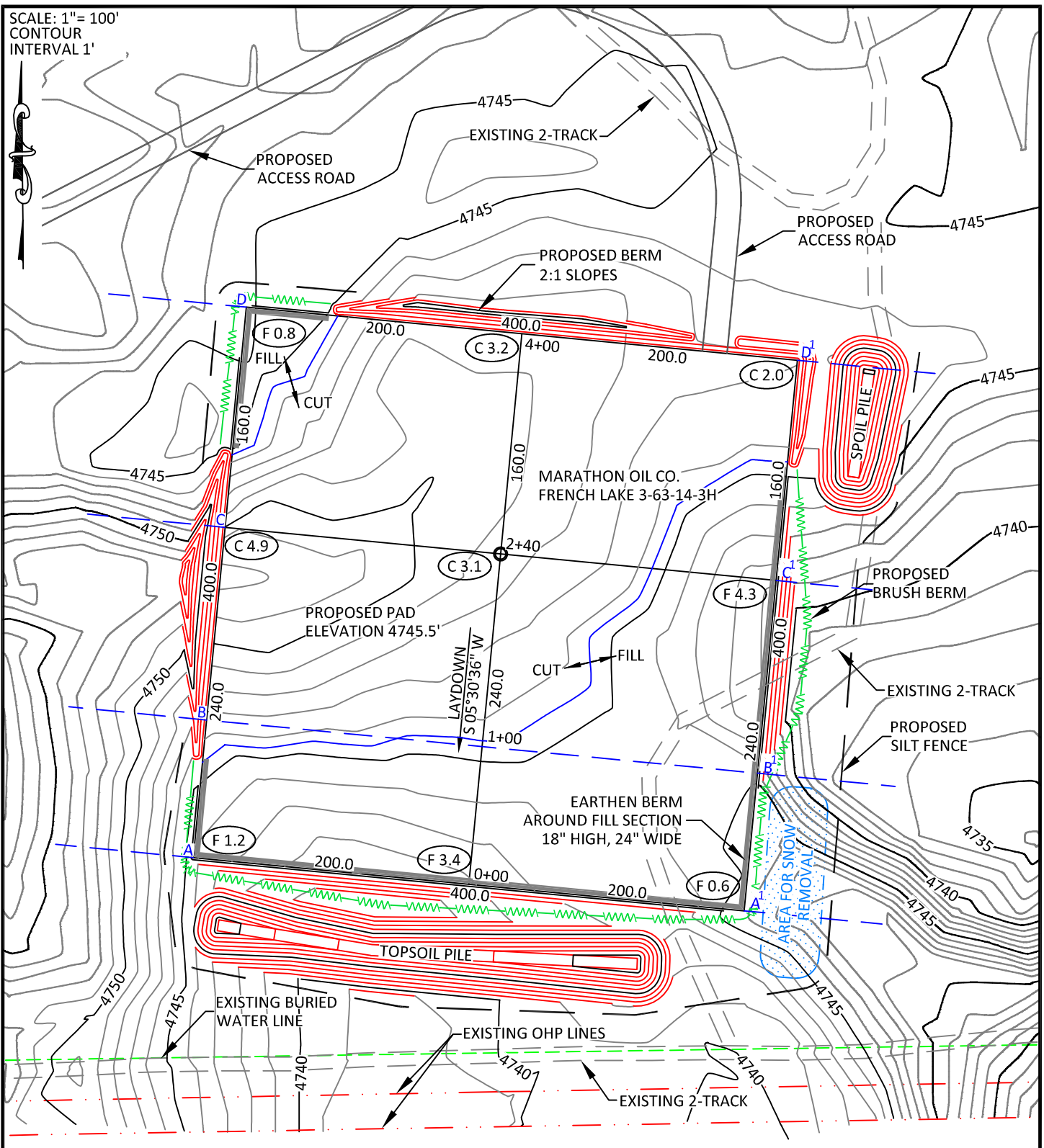
SCALE: 1"=60'

DATE: 2/8/2012

EXHIBIT "L"

SHEET 11 OF 14

SCALE: 1"= 100'  
CONTOUR  
INTERVAL 1'



**CONFIDENTIALITY NOTES:**

The information contained in this plat is legally privileged and confidential information intended only for the use of the recipients. If you are not the intended recipients, you are hereby notified that any use, dissemination, distribution or copying of this information is strictly prohibited.



**WILLIAM H. SMITH  
& ASSOCIATES P.C.**

**SURVEYING CONSULTANTS**  
550 EAST SECOND NORTH PHONE: 307-875-3638  
GREEN RIVER, WY 307-875-3639  
www.whsmithpc.com

DRAWN BY: BW

CHECKED BY: RAW

PROJECT NO: 363143H

JOB NO: 2011001

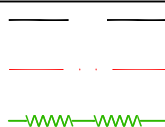
REVISIONS:

**LEGEND**

SILT FENCE

EXISTING OHP

BRUSH BERM



**LOCATION:**

FRENCH LAKE  
3-63-14-3H  
WITHIN THE SW/4  
SE/4, SECTION 14,  
T 3 N, R 63 W,  
6TH PM.  
WELD COUNTY,  
COLORADO

**MARATHON OIL COMPANY**  
PO BOX 3128, HOUSTON TX, 77253  
5555 SAN FELIPE, HOUSTON TX, 77056

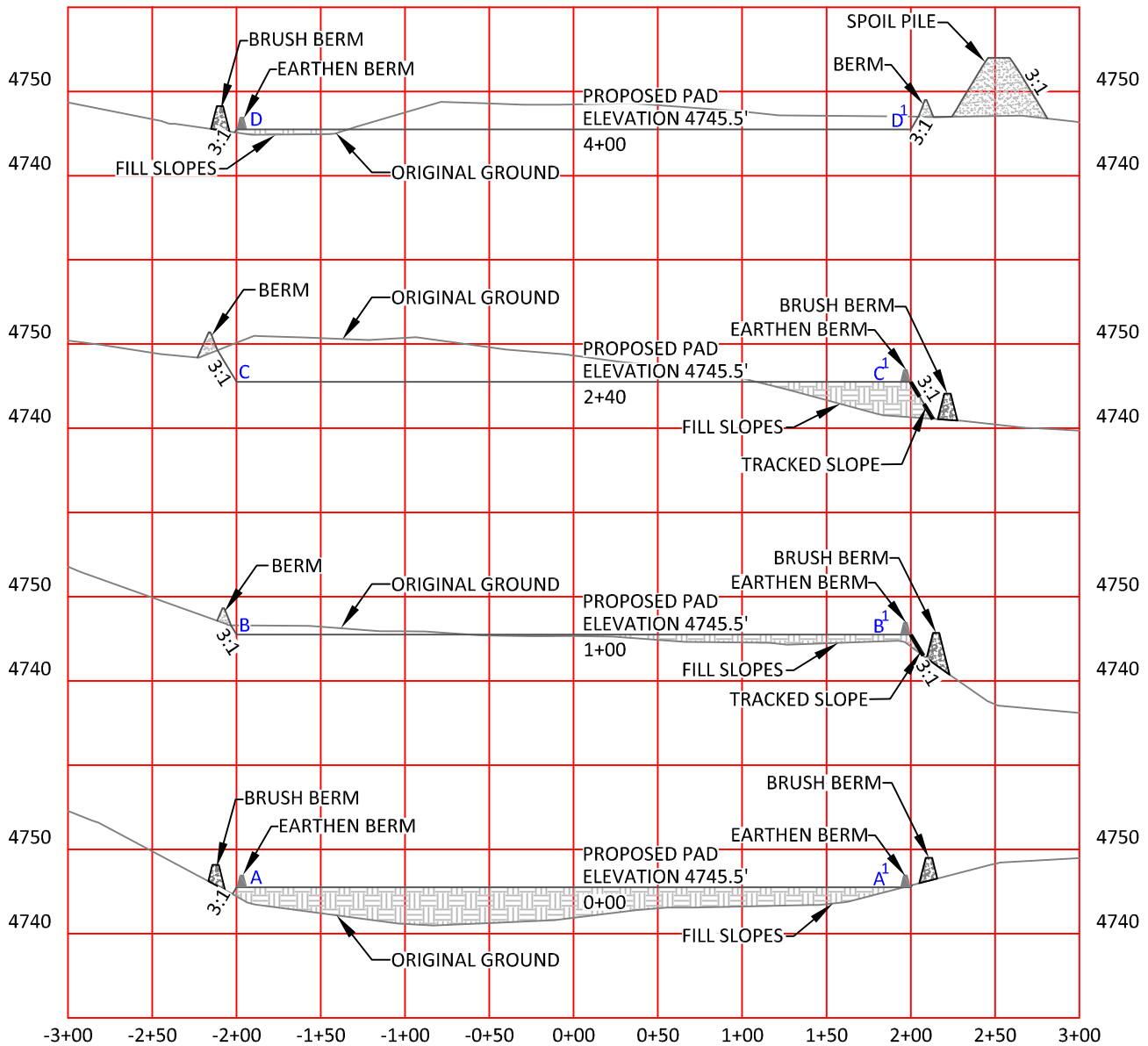
**STORM WATER  
PREVENTION PLAN**

SCALE: 1"= 100'

DATE: 2/8/2012

EXHIBIT "M"

SHEET 12 of 14



HORIZONTAL SCALE: 1"=100'  
VERTICAL SCALE: 1"=20'



**WILLIAM H. SMITH  
& ASSOCIATES P.C.**  
SURVEYING CONSULTANTS

550 EAST SECOND NORTH PHONE: 307-875-3638  
GREEN RIVER, WY 307-875-3639  
www.whsmithpc.com

DRAWN BY: BW	CHECKED BY: RAW
PROJECT NO: 363143H	JOB NO: 2011001
REVISIONS:	

**CONFIDENTIALITY NOTES:**

The information contained in this plat is legally privileged and confidential information intended only for the use of the recipients. If you are not the intended recipients, you are hereby notified that any use, dissemination, distribution or copying of this information is strictly prohibited.

**LOCATION:**

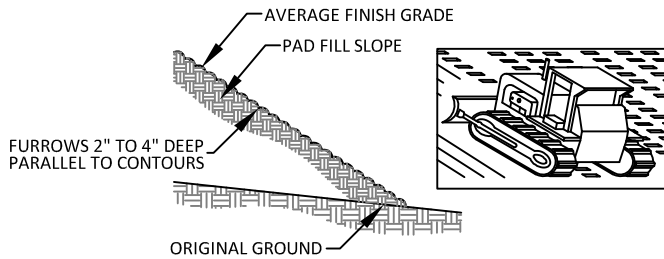
FRENCH LAKE  
3-63-14-3H  
WITHIN THE SW/4  
SE/4, SECTION 14,  
T 3 N, R 63 W,  
6TH PM.  
WELD COUNTY,  
COLORADO

**MARATHON OIL COMPANY**  
PO BOX 3128, HOUSTON TX, 77253  
5555 SAN FELIPE, HOUSTON TX, 77056

**STORM WATER PREVENTION  
CROSS SECTIONS**

SCALE: AS NOTED	EXHIBIT "N"
DATE: 2/8/2012	SHEET 13 of 14

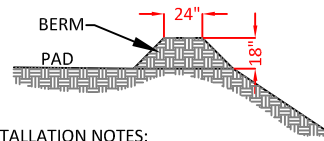
### A. FILL SLOPE TRACKING DETAILS



#### INSTALLATION NOTES:

1. DISTURBED SURFACES SHALL BE ROUGHENED USING RIPPING OR TILLING EQUIPMENT ON THE CONTOURS OR TRACKING UP AND DOWN THE SLOPE USING EQUIPMENT TREADS

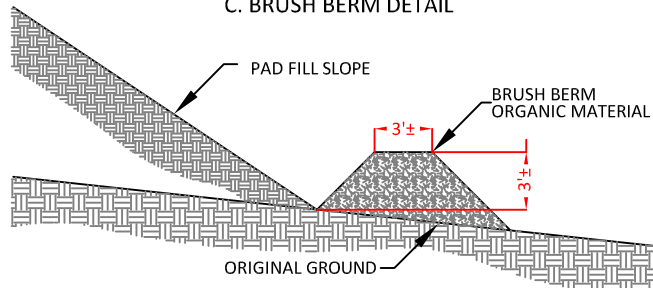
### B. EARTHEN BERM DETAIL



#### INSTALLATION NOTES:

1. BERM SHALL BE CONSTRUCTED OF WELL COMPACTED GRANULAR MATERIAL.
2. BERM SHALL BE CONSTRUCTED ON THE PERIMETER OF THE PAD IN ALL AREAS THAT COULD RECEIVE STORMWATER RUNOFF.
3. DIMENSIONS ARE APPROXIMATE. FIELD CONDITIONS WILL DETERMINE ACTUAL DIMENSIONS OF STRUCTURE.

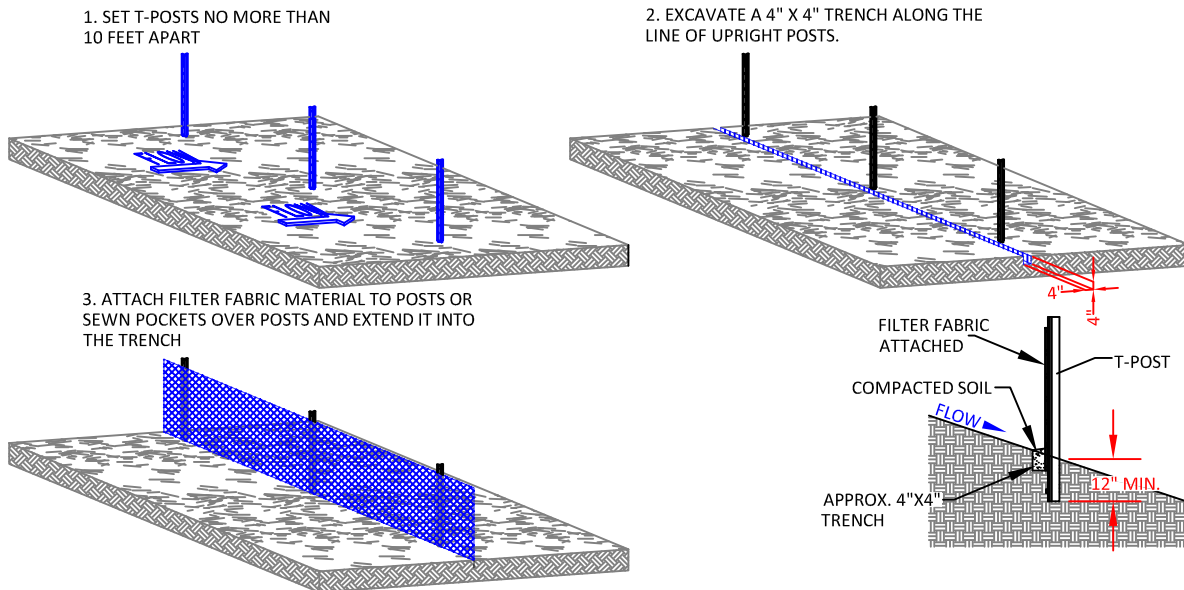
### C. BRUSH BERM DETAIL



#### INSTALLATION NOTES:

1. BERM TO BE CONSTRUCTED AFTER SITE HAS BEEN GRUBBED PRIOR TO PAD CONSTRUCTION.
2. ONSITE ORGANIC MATERIAL TO BE PUSHED INTO BERM ON EDGE PERIMETER OF FILL SLOPE IN A MANNER NOT TO CREATE ADDITIONAL DISTURBANCE BEYOND THE CATCH LINE.
3. BERM TO BE COMPACTED WITH FRONT END LOADER BUCKET OR SIMILAR METHOD TO ACHIEVE ADEQUATE COMPACTION.

### D. SILT FENCE DETAILS



#### CONFIDENTIALITY NOTES:

The information contained in this plat is legally privileged and confidential information intended only for the use of the recipients. If you are not the intended recipients, you are hereby notified that any use, dissemination, distribution or copying of this information is strictly prohibited.



**WILLIAM H. SMITH  
& ASSOCIATES P.C.**

**SURVEYING CONSULTANTS**  
550 EAST SECOND NORTH PHONE: 307-875-3638  
GREEN RIVER, WY 307-875-3639  
www.whsmithpc.com

DRAWN BY: BW

CHECKED BY: RAW

PROJECT NO: 363143H

JOB NO: 2011001

REVISIONS:

#### USED ON THIS SITE

A: FILL SLOPE TRACKING

B: EARTHEN BERM AT TOP OF SLOPE  
AROUND FILL SECTIONS

C: BRUSH BERM AT TOE OF SLOPE  
AROUND FILL SECTIONS

D: SILT FENCE

#### LOCATION:

FRENCH LAKE  
3-63-14-3H  
WITHIN THE SW/4  
SE/4, SECTION 14,  
T 3 N, R 63 W,  
6TH PM.  
WELD COUNTY,  
COLORADO

#### MARATHON OIL COMPANY

PO BOX 3128, HOUSTON TX, 77253  
5555 SAN FELIPE, HOUSTON TX, 77056

#### STORM WATER PREVENTION DETAILS

SCALE: NOT TO SCALE

EXHIBIT "O"

DATE: 2/8/2012

SHEET 14 of 14



