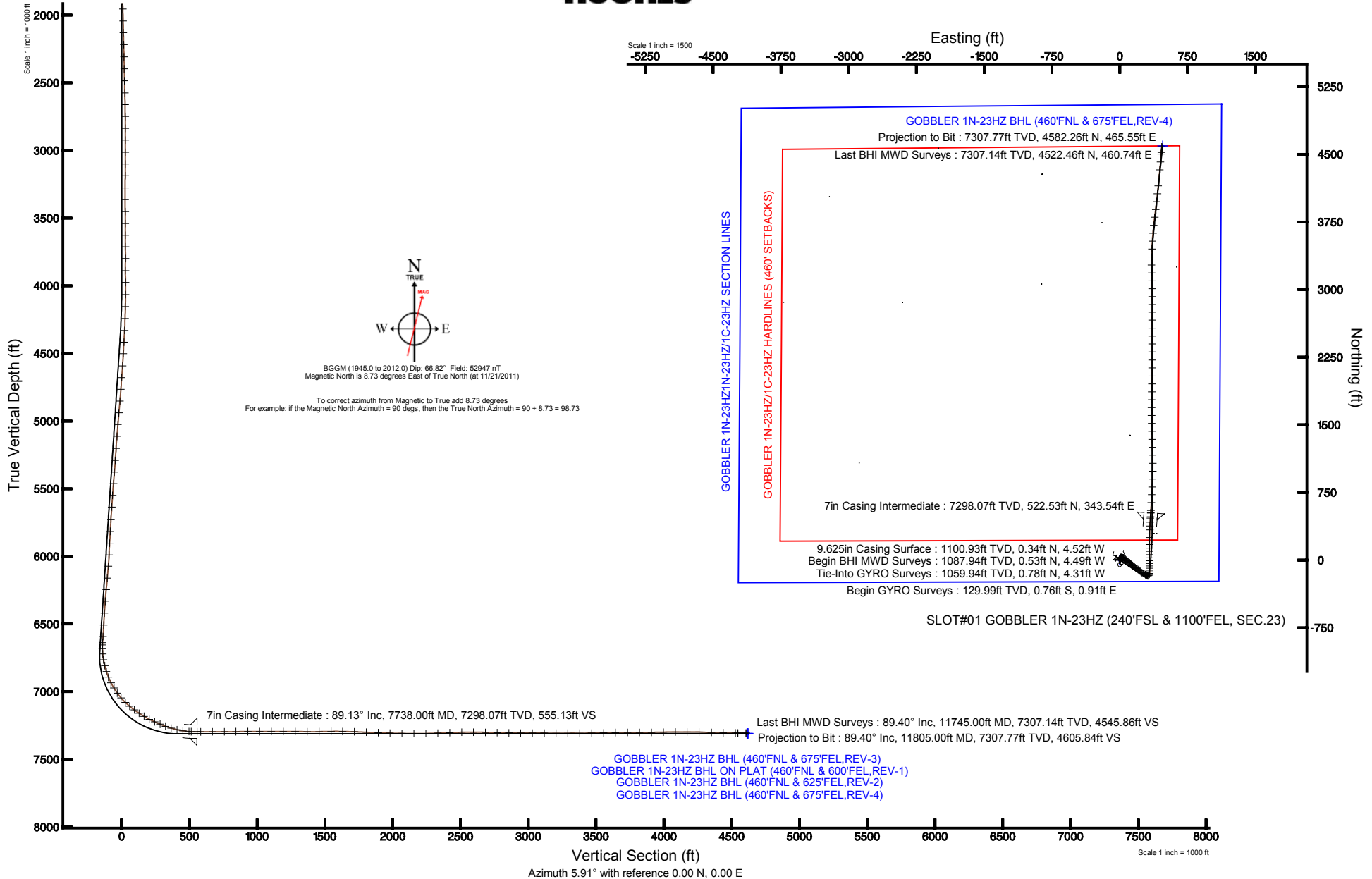


ANADARKO E&P COMPANY LP

Location: COLORADO Slot: SLOT#01 GOBBLER 1N-23HZ (240'FSL & 1100'FEL, SEC.23)
 Field: WELD COUNTY (KERR MCGEE) Well: GOBBLER 1N-23HZ
 Facility: SEC.23-T2N-R66W Wellbore: GOBBLER 1N-23HZ PWB

Plot reference wellpath is GOBBLER 1N-23HZ (REV-F.0) PWP	Grid System: NAD83 / Lambert Colorado SP, Northern Zone (501), US feet
True vertical depths are referenced to XTREME 8 (RKB)	North Reference: True north
Measured depths are referenced to XTREME 8 (RKB)	Scale: True distance
XTREME 8 (RKB) to Mean Sea Level: 5102 feet	Depths are in feet
Mean Sea Level to Mud line (At Slot: SLOT#01 GOBBLER 1N-23HZ (240'FSL & 1100'FEL, SEC.23)): 0 feet	Coordinates are in feet referenced to Slot
Created by: wilsje02 on 1/19/2012	





Actual Wellpath Report

GOBBLER 1N-23HZ AWP

Page 1 of 5



REFERENCE WELLPATH IDENTIFICATION

Operator	ANADARKO E&P COMPANY LP	Slot	SLOT#01 GOBBLER 1N-23HZ (240'FSL & 1100'FEL, SEC.23)
Area	COLORADO	Well	GOBBLER 1N-23HZ
Field	WELD COUNTY (KERR MCGEE)	Wellbore	GOBBLER 1N-23HZ AWB
Facility	SEC.23-T2N-R66W		

REPORT SETUP INFORMATION

Projection System	NAD83 / Lambert Colorado SP, Northern Zone (501), US feet	Software System	WellArchitect® 3.0.2
North Reference	True	User	Wilsjef02
Scale	0.99996	Report Generated	1/19/2012 at 3:10:07 PM
Convergence at slot	0.49° East	Database/Source file	WA_ANADARKO/GOBBLER_1N-23HZ_AWB.xml

WELLPATH LOCATION

	Local coordinates		Grid coordinates		Geographic coordinates	
	North[ft]	East[ft]	Easting[US ft]	Northing[US ft]	Latitude	Longitude
Slot Location	-0.10	0.00	3212854.29	1286435.25	40°07'01.740"N	104°44'20.062"W
Facility Reference Pt			3212854.29	1286435.36	40°07'01.741"N	104°44'20.062"W
Field Reference Pt			3197771.84	1268891.29	40°04'09.600"N	104°47'36.000"W

WELLPATH DATUM

Calculation method	Minimum curvature	XTREME 8 (RKB) to Facility Vertical Datum	5102.00ft
Horizontal Reference Pt	Slot	XTREME 8 (RKB) to Mean Sea Level	5102.00ft
Vertical Reference Pt	XTREME 8 (RKB)	XTREME 8 (RKB) to Mud Line at Slot (SLOT#01 GOBBLER 1N-23HZ (240'FSL & 1100'FEL, SEC.23))	5102.00ft
MD Reference Pt	XTREME 8 (RKB)	Section Origin	N 0.00, E 0.00 ft
Field Vertical Reference	Mean Sea Level	Section Azimuth	5.91°



Actual Wellpath Report

GOBBLER 1N-23HZ AWP

Page 2 of 5



REFERENCE WELLPATH IDENTIFICATION			
Operator	ANADARKO E&P COMPANY LP	Slot	SLOT#01 GOBBLER 1N-23HZ (240'FSL & 1100'FEL, SEC.23)
Area	COLORADO	Well	GOBBLER 1N-23HZ
Field	WELD COUNTY (KERR MCGEE)	Wellbore	GOBBLER 1N-23HZ AWB
Facility	SEC.23-T2N-R66W		

WELLPATH DATA (140 stations)										
MD [ft]	Inclination [°]	Azimuth [°]	TVD [ft]	Vert Sect [ft]	North [ft]	East [ft]	Latitude	Longitude	DLS [°/100ft]	Comments
1060.00	0.600	256.600	1059.94	0.33	0.78	-4.31	40°07'01.748"N	104°44'20.117"W	0.40	Tie-Into GYRO Surveys
1088.00	0.900	189.300	1087.94	0.06	0.53	-4.49	40°07'01.745"N	104°44'20.120"W	3.10	Begin BHI MWD Surveys
1149.00	0.500	194.400	1148.93	-0.68	-0.20	-4.63	40°07'01.738"N	104°44'20.122"W	0.66	
1242.00	0.400	61.800	1241.93	-0.90	-0.44	-4.45	40°07'01.736"N	104°44'20.119"W	0.89	
1333.00	0.600	51.300	1332.93	-0.39	0.01	-3.79	40°07'01.740"N	104°44'20.111"W	0.24	
1427.00	0.700	45.700	1426.92	0.40	0.71	-3.00	40°07'01.747"N	104°44'20.101"W	0.13	
1513.00	0.700	36.500	1512.91	1.26	1.50	-2.31	40°07'01.755"N	104°44'20.092"W	0.13	
1599.00	0.800	39.600	1598.91	2.21	2.39	-1.62	40°07'01.764"N	104°44'20.083"W	0.13	
1688.00	1.000	46.900	1687.90	3.31	3.40	-0.65	40°07'01.774"N	104°44'20.070"W	0.26	
1777.00	1.200	38.200	1776.88	4.69	4.66	0.49	40°07'01.786"N	104°44'20.056"W	0.29	
1865.00	1.300	38.800	1864.86	6.30	6.16	1.69	40°07'01.801"N	104°44'20.040"W	0.11	
1953.00	1.500	40.600	1952.83	8.09	7.82	3.06	40°07'01.817"N	104°44'20.023"W	0.23	
2041.00	1.500	39.700	2040.80	9.99	9.58	4.55	40°07'01.835"N	104°44'20.003"W	0.03	
2128.00	1.700	36.000	2127.77	12.06	11.50	6.03	40°07'01.854"N	104°44'19.984"W	0.26	
2217.00	1.600	31.500	2216.73	14.32	13.62	7.46	40°07'01.875"N	104°44'19.966"W	0.18	
2307.00	1.600	39.500	2306.70	16.50	15.66	8.91	40°07'01.895"N	104°44'19.947"W	0.25	
2396.00	1.500	41.800	2395.66	18.48	17.49	10.48	40°07'01.913"N	104°44'19.927"W	0.13	
2484.00	1.500	35.900	2483.63	20.41	19.28	11.92	40°07'01.931"N	104°44'19.909"W	0.18	
2573.00	1.700	31.900	2572.60	22.60	21.35	13.30	40°07'01.951"N	104°44'19.891"W	0.26	
2661.00	1.100	9.300	2660.57	24.62	23.29	14.13	40°07'01.970"N	104°44'19.880"W	0.91	
2748.00	0.400	23.000	2747.57	25.74	24.39	14.38	40°07'01.981"N	104°44'19.877"W	0.82	
2835.00	0.400	326.600	2834.56	26.27	24.93	14.33	40°07'01.986"N	104°44'19.877"W	0.43	
2923.00	0.400	154.300	2922.56	26.25	24.91	14.30	40°07'01.986"N	104°44'19.878"W	0.91	
3013.00	0.300	122.500	3012.56	25.87	24.50	14.63	40°07'01.982"N	104°44'19.874"W	0.24	
3099.00	0.100	255.600	3098.56	25.75	24.36	14.75	40°07'01.981"N	104°44'19.872"W	0.44	
3186.00	0.300	270.100	3185.56	25.70	24.34	14.45	40°07'01.981"N	104°44'19.876"W	0.24	
3276.00	0.600	113.600	3275.56	25.53	24.15	14.65	40°07'01.979"N	104°44'19.873"W	0.98	
3363.00	0.500	98.400	3362.55	25.37	23.91	15.44	40°07'01.976"N	104°44'19.863"W	0.20	
3451.00	1.100	69.200	3450.55	25.74	24.16	16.61	40°07'01.979"N	104°44'19.848"W	0.80	
3540.00	1.600	89.200	3539.52	26.27	24.48	18.65	40°07'01.982"N	104°44'19.822"W	0.76	
3626.00	1.300	78.500	3625.49	26.70	24.69	20.81	40°07'01.984"N	104°44'19.794"W	0.47	
3712.00	1.700	85.500	3711.46	27.22	24.98	23.03	40°07'01.987"N	104°44'19.766"W	0.51	
3799.00	2.100	98.900	3798.42	27.37	24.84	25.89	40°07'01.985"N	104°44'19.729"W	0.68	
3888.00	2.500	96.300	3887.35	27.27	24.37	29.44	40°07'01.981"N	104°44'19.683"W	0.46	
3976.00	2.200	86.800	3975.27	27.53	24.26	33.03	40°07'01.980"N	104°44'19.637"W	0.56	
4066.00	2.600	98.100	4065.19	27.72	24.06	36.78	40°07'01.978"N	104°44'19.589"W	0.69	
4154.00	3.300	116.300	4153.08	26.76	22.66	41.02	40°07'01.964"N	104°44'19.534"W	1.32	
4243.00	4.100	122.200	4241.89	24.46	19.83	46.01	40°07'01.936"N	104°44'19.470"W	0.99	
4331.00	5.200	128.400	4329.60	20.93	15.68	51.80	40°07'01.895"N	104°44'19.395"W	1.37	
4418.00	5.900	130.800	4416.19	16.25	10.31	58.27	40°07'01.842"N	104°44'19.312"W	0.85	
4504.00	6.200	129.000	4501.71	11.19	4.50	65.23	40°07'01.784"N	104°44'19.222"W	0.41	
4594.00	7.000	126.100	4591.12	5.78	-1.79	73.44	40°07'01.722"N	104°44'19.117"W	0.96	
4682.00	8.100	126.700	4678.35	-0.09	-8.66	82.74	40°07'01.654"N	104°44'18.997"W	1.25	
4770.00	8.000	131.900	4765.49	-6.86	-16.45	92.27	40°07'01.577"N	104°44'18.874"W	0.83	
4858.00	8.500	127.000	4852.58	-13.82	-24.46	102.02	40°07'01.498"N	104°44'18.749"W	0.98	
4946.00	8.700	130.700	4939.59	-20.98	-32.71	112.26	40°07'01.417"N	104°44'18.617"W	0.67	
5033.00	7.600	133.000	5025.71	-28.20	-40.93	121.46	40°07'01.336"N	104°44'18.499"W	1.32	
5121.00	6.900	138.700	5113.01	-35.30	-48.87	129.20	40°07'01.257"N	104°44'18.399"W	1.14	
5211.00	6.500	132.700	5202.39	-42.02	-56.38	136.51	40°07'01.183"N	104°44'18.305"W	0.90	
5300.00	6.800	130.700	5290.79	-48.05	-63.24	144.21	40°07'01.115"N	104°44'18.206"W	0.43	
5387.00	8.400	127.100	5377.03	-54.28	-70.43	153.18	40°07'01.044"N	104°44'18.090"W	1.92	
5473.00	8.700	126.400	5462.07	-60.83	-78.08	163.43	40°07'00.968"N	104°44'17.958"W	0.37	
5561.00	9.200	126.400	5549.00	-67.78	-86.20	174.45	40°07'00.888"N	104°44'17.817"W	0.57	
5649.00	7.600	124.300	5636.05	-74.11	-93.65	184.92	40°07'00.814"N	104°44'17.682"W	1.85	
5740.00	7.800	121.500	5726.23	-79.64	-100.27	195.16	40°07'00.749"N	104°44'17.550"W	0.47	
5830.00	6.800	122.500	5815.50	-84.66	-106.33	204.86	40°07'00.689"N	104°44'17.425"W	1.12	
5918.00	6.400	127.300	5902.92	-89.55	-112.10	213.15	40°07'00.632"N	104°44'17.318"W	0.77	
6005.00	5.100	128.500	5989.48	-94.16	-117.44	220.04	40°07'00.579"N	104°44'17.230"W	1.50	
6089.00	5.300	142.200	6073.14	-98.97	-122.83	225.34	40°07'00.526"N	104°44'17.162"W	1.49	
6178.00	10.900	129.200	6161.22	-106.57	-131.41	234.38	40°07'00.441"N	104°44'17.045"W	6.58	



Actual Wellpath Report

GOBBLER 1N-23HZ AWP

Page 3 of 5



REFERENCE WELLPATH IDENTIFICATION			
Operator	ANADARKO E&P COMPANY LP	Slot	SLOT#01 GOBBLER 1N-23HZ (240'FSL & 1100'FEL, SEC.23)
Area	COLORADO	Well	GOBBLER 1N-23HZ
Field	WELD COUNTY (KERR MCGEE)	Wellbore	GOBBLER 1N-23HZ AWB
Facility	SEC.23-T2N-R66W		

WELLPATH DATA (140 stations) † = interpolated/extrapolated station										
MD [ft]	Inclination [°]	Azimuth [°]	TVD [ft]	Vert Sect [ft]	North [ft]	East [ft]	Latitude	Longitude	DLS [°/100ft]	Comments
6265.00	10.100	127.100	6246.76	-115.04	-141.21	246.84	40°07'00.345"N	104°44'16.885"W	1.02	
6352.00	10.100	120.900	6332.42	-122.21	-149.73	259.47	40°07'00.260"N	104°44'16.722"W	1.25	
6441.00	8.900	118.100	6420.20	-128.11	-156.98	272.24	40°07'00.189"N	104°44'16.558"W	1.44	
6530.00	9.400	114.000	6508.06	-132.96	-163.18	284.96	40°07'00.127"N	104°44'16.394"W	0.92	
6617.00	10.700	118.600	6593.73	-138.28	-169.93	298.54	40°07'00.061"N	104°44'16.219"W	1.76	
6662.00	9.700	117.400	6638.02	-141.28	-173.68	305.57	40°07'00.024"N	104°44'16.129"W	2.27	
6680.00	8.900	109.000	6655.78	-142.16	-174.83	308.24	40°07'00.012"N	104°44'16.095"W	8.74	
6705.00	8.700	94.600	6680.49	-142.55	-175.61	311.95	40°07'00.005"N	104°44'16.047"W	8.83	
6748.00	10.400	63.800	6722.92	-140.41	-174.16	318.68	40°07'00.019"N	104°44'15.960"W	12.35	
6792.00	11.300	35.200	6766.16	-134.54	-168.88	324.73	40°07'00.071"N	104°44'15.882"W	12.27	
6836.00	13.900	13.900	6809.12	-125.54	-160.22	328.49	40°07'00.157"N	104°44'15.834"W	12.00	
6881.00	17.900	3.500	6852.40	-113.27	-148.06	330.21	40°07'00.277"N	104°44'15.812"W	10.88	
6926.00	22.300	1.700	6894.65	-97.83	-132.62	330.89	40°07'00.429"N	104°44'15.803"W	9.87	
6971.00	26.800	0.100	6935.57	-79.22	-113.93	331.16	40°07'00.614"N	104°44'15.799"W	10.11	
7016.00	31.700	358.800	6974.82	-57.38	-91.95	330.93	40°07'00.831"N	104°44'15.802"W	10.98	
7061.00	35.800	357.800	7012.23	-32.61	-66.97	330.17	40°07'01.078"N	104°44'15.812"W	9.19	
7106.00	41.000	359.300	7047.49	-4.89	-39.03	329.49	40°07'01.354"N	104°44'15.821"W	11.74	
7151.00	45.500	359.400	7080.25	25.73	-8.21	329.14	40°07'01.659"N	104°44'15.825"W	10.00	
7194.00	50.600	0.200	7108.99	57.52	23.76	329.04	40°07'01.975"N	104°44'15.827"W	11.94	
7239.00	54.200	0.100	7136.44	92.99	59.41	329.13	40°07'02.327"N	104°44'15.826"W	8.00	
7282.00	57.200	359.300	7160.67	128.29	94.92	328.94	40°07'02.678"N	104°44'15.828"W	7.14	
7325.00	58.300	359.200	7183.62	164.41	131.29	328.46	40°07'03.037"N	104°44'15.834"W	2.57	
7370.00	62.700	0.200	7205.77	203.34	170.44	328.26	40°07'03.424"N	104°44'15.837"W	9.97	
7414.00	65.800	1.400	7224.88	242.81	210.06	328.82	40°07'03.816"N	104°44'15.829"W	7.46	
7457.00	68.100	1.500	7241.72	282.25	249.61	329.82	40°07'04.207"N	104°44'15.817"W	5.35	
7500.00	70.800	1.700	7256.81	322.40	289.86	330.95	40°07'04.604"N	104°44'15.802"W	6.29	
7545.00	72.600	2.600	7270.94	365.03	332.55	332.55	40°07'05.026"N	104°44'15.781"W	4.43	
7590.00	77.300	3.000	7282.62	408.41	375.94	334.68	40°07'05.455"N	104°44'15.754"W	10.48	
7634.00	81.000	3.300	7290.90	451.57	419.08	337.05	40°07'05.881"N	104°44'15.724"W	8.44	
7679.00	85.800	3.900	7296.07	496.22	463.68	339.86	40°07'06.322"N	104°44'15.687"W	10.75	
7695.00	87.900	3.400	7296.95	512.18	479.62	340.88	40°07'06.480"N	104°44'15.674"W	13.49	
7738.00†	89.129	3.707	7298.07	555.13	522.53	343.54	40°07'06.904"N	104°44'15.640"W	2.95	7" Casing Point
7765.00	89.900	3.900	7298.30	582.11	549.47	345.33	40°07'07.170"N	104°44'15.617"W	2.95	
7852.00	90.600	2.800	7297.92	669.02	636.31	350.42	40°07'08.028"N	104°44'15.551"W	1.50	
7940.00	90.100	2.800	7297.38	756.89	724.21	354.71	40°07'08.897"N	104°44'15.496"W	0.57	
8026.00	90.400	3.100	7297.01	842.77	810.09	359.14	40°07'09.745"N	104°44'15.439"W	0.49	
8114.00	90.100	1.800	7296.62	930.61	898.01	362.90	40°07'10.614"N	104°44'15.391"W	1.52	
8201.00	89.900	1.100	7296.62	1017.34	984.98	365.10	40°07'11.474"N	104°44'15.362"W	0.84	
8287.00	90.300	359.300	7296.47	1102.91	1070.98	365.40	40°07'12.323"N	104°44'15.358"W	2.14	
8377.00	90.900	358.700	7295.53	1192.25	1160.96	363.83	40°07'13.213"N	104°44'15.379"W	0.94	
8465.00	88.700	358.200	7295.84	1279.50	1248.92	361.45	40°07'14.082"N	104°44'15.409"W	2.56	
8554.00	89.400	358.900	7297.31	1367.76	1337.88	359.20	40°07'14.961"N	104°44'15.438"W	1.11	
8644.00	91.100	358.400	7296.92	1457.03	1427.85	357.08	40°07'15.850"N	104°44'15.466"W	1.97	
8732.00	90.900	358.200	7295.38	1544.24	1515.80	354.47	40°07'16.719"N	104°44'15.499"W	0.32	
8818.00	88.700	359.400	7295.68	1629.57	1601.77	352.67	40°07'17.569"N	104°44'15.522"W	2.91	
8906.00	88.200	0.800	7298.06	1717.09	1689.73	352.82	40°07'18.438"N	104°44'15.520"W	1.69	
8994.00	87.400	1.100	7301.44	1804.69	1777.66	354.28	40°07'19.307"N	104°44'15.501"W	0.97	
9082.00	88.200	0.500	7304.82	1892.27	1865.58	355.51	40°07'20.176"N	104°44'15.486"W	1.14	
9170.00	87.900	1.100	7307.81	1979.87	1953.52	356.74	40°07'21.045"N	104°44'15.470"W	0.76	
9258.00	89.100	0.800	7310.12	2067.51	2041.48	358.19	40°07'21.914"N	104°44'15.451"W	1.41	
9346.00	89.900	0.400	7310.89	2155.13	2129.47	359.12	40°07'22.784"N	104°44'15.439"W	1.02	
9436.00	90.900	359.900	7310.26	2244.67	2219.47	359.35	40°07'23.673"N	104°44'15.436"W	1.24	
9524.00	92.400	0.100	7307.72	2332.17	2307.43	359.35	40°07'24.542"N	104°44'15.436"W	1.72	
9613.00	92.300	359.700	7304.07	2420.60	2396.35	359.20	40°07'25.421"N	104°44'15.438"W	0.46	
9701.00	91.300	359.400	7301.31	2508.02	2484.30	358.51	40°07'26.290"N	104°44'15.447"W	1.19	
9789.00	89.600	0.200	7300.62	2595.51	2572.30	358.20	40°07'27.160"N	104°44'15.451"W	2.14	
9877.00	88.300	0.800	7302.23	2683.10	2660.28	358.97	40°07'28.029"N	104°44'15.441"W	1.63	
9965.00	88.400	0.800	7304.77	2770.71	2748.23	360.19	40°07'28.898"N	104°44'15.425"W	0.11	
10051.00	89.400	359.500	7306.42	2856.26	2834.21	360.42	40°07'29.748"N	104°44'15.422"W	1.91	
10139.00	89.300	359.400	7307.41	2943.70	2922.20	359.57	40°07'30.618"N	104°44'15.433"W	0.16	



Actual Wellpath Report

GOBBLER 1N-23HZ AWP

Page 4 of 5



REFERENCE WELLPATH IDENTIFICATION			
Operator	ANADARKO E&P COMPANY LP	Slot	SLOT#01 GOBBLER 1N-23HZ (240'FSL & 1100'FEL, SEC.23)
Area	COLORADO	Well	GOBBLER 1N-23HZ
Field	WELD COUNTY (KERR MCGEE)	Wellbore	GOBBLER 1N-23HZ AWB
Facility	SEC.23-T2N-R66W		

WELLPATH DATA (140 stations)										
MD [ft]	Inclination [°]	Azimuth [°]	TVD [ft]	Vert Sect [ft]	North [ft]	East [ft]	Latitude	Longitude	DLS [°/100ft]	Comments
10226.00	89.800	358.700	7308.10	3030.07	3009.19	358.13	40°07'31.477"N	104°44'15.452"W	0.99	
10314.00	89.700	358.500	7308.48	3117.35	3097.16	355.98	40°07'32.346"N	104°44'15.479"W	0.25	
10402.00	90.000	358.100	7308.71	3204.58	3185.12	353.37	40°07'33.216"N	104°44'15.513"W	0.57	
10490.00	90.200	358.600	7308.56	3291.81	3273.08	350.84	40°07'34.085"N	104°44'15.546"W	0.61	
10578.00	89.700	1.900	7308.64	3379.37	3361.07	351.22	40°07'34.954"N	104°44'15.541"W	3.79	
10667.00	91.200	4.200	7307.94	3468.25	3449.93	355.96	40°07'35.833"N	104°44'15.480"W	3.09	
10754.00	91.900	3.600	7305.58	3555.16	3536.70	361.87	40°07'36.690"N	104°44'15.403"W	1.06	
10842.00	90.600	4.500	7303.66	3643.09	3624.45	368.09	40°07'37.557"N	104°44'15.323"W	1.80	
10931.00	90.100	6.700	7303.12	3732.08	3713.02	376.77	40°07'38.432"N	104°44'15.212"W	2.53	
11020.00	90.100	7.000	7302.96	3821.07	3801.39	387.38	40°07'39.306"N	104°44'15.075"W	0.34	
11108.00	91.000	7.100	7302.12	3909.05	3888.72	398.18	40°07'40.169"N	104°44'14.936"W	1.03	
11196.00	91.200	6.500	7300.43	3997.02	3976.08	408.60	40°07'41.032"N	104°44'14.802"W	0.72	
11284.00	90.500	5.600	7299.12	4085.01	4063.58	417.88	40°07'41.897"N	104°44'14.682"W	1.30	
11371.00	90.000	6.100	7298.75	4172.01	4150.13	426.74	40°07'42.752"N	104°44'14.568"W	0.81	
11460.00	88.200	5.600	7300.14	4260.99	4238.65	435.81	40°07'43.627"N	104°44'14.451"W	2.10	
11550.00	88.200	5.400	7302.97	4350.95	4328.19	444.43	40°07'44.512"N	104°44'14.340"W	0.22	
11638.00	88.800	4.700	7305.27	4438.90	4415.82	452.18	40°07'45.378"N	104°44'14.241"W	1.05	
11727.00	89.100	4.500	7306.90	4527.87	4504.51	459.31	40°07'46.254"N	104°44'14.149"W	0.41	
11745.00	89.400	4.600	7307.14	4545.86	4522.46	460.74	40°07'46.431"N	104°44'14.130"W	1.76	Last BHI MWD Surveys
11805.00	89.400	4.600	7307.77	4605.84	4582.26	465.55	40°07'47.022"N	104°44'14.068"W	0.00	Projection to Bit

HOLE & CASING SECTIONS - Ref Wellbore: GOBBLER 1N-23HZ AWB Ref Wellpath: GOBBLER 1N-23HZ AWP									
String/Diameter	Start MD [ft]	End MD [ft]	Interval [ft]	Start TVD [ft]	End TVD [ft]	Start N/S [ft]	Start E/W [ft]	End N/S [ft]	End E/W [ft]
13.5in Open Hole	17.00	1101.00	1084.00	17.00	1100.93	0.00	0.00	0.34	-4.52
9.625in Casing Surface	17.00	1101.00	1084.00	17.00	1100.93	0.00	0.00	0.34	-4.52
8.75in Open Hole	1101.00	7738.00	6637.00	1100.93	7298.07	0.34	-4.52	522.53	343.54
7in Casing Intermediate	17.00	7738.00	7721.00	17.00	7298.07	0.00	0.00	522.53	343.54
6.125in Open Hole	7738.00	11805.00	4067.00	7298.07	7307.77	522.53	343.54	4582.26	465.55

TARGETS									
Name	MD [ft]	TVD [ft]	North [ft]	East [ft]	Grid East [US ft]	Grid North [US ft]	Latitude	Longitude	Shape
GOBBLER 1N-23HZ1N-23HZ/1C-23HZ SECTION LINES		-1.00	0.00	0.00	3212854.29	1286435.25	40°07'01.740"N	104°44'20.062"W	polygon
GOBBLER 1N-23HZ/1C-23HZ HARDLINES (460' SETBACKS)		7235.00	0.00	0.00	3212854.29	1286435.25	40°07'01.740"N	104°44'20.062"W	polygon
GOBBLER 1N-23HZ BHL (460'FNL & 625'FEL,REV-2)		7310.00	4593.76	424.62	3213239.45	1291032.29	40°07'47.136"N	104°44'14.595"W	point
GOBBLER 1N-23HZ BHL (460'FNL & 675'FEL,REV-3)		7310.00	4593.76	475.62	3213290.45	1291032.73	40°07'47.136"N	104°44'13.939"W	point
GOBBLER 1N-23HZ BHL ON PLAT (460'FNL & 600'FEL,REV-1)		7310.00	4593.76	524.62	3213339.45	1291033.15	40°07'47.136"N	104°44'13.308"W	point
GOBBLER 1N-23HZ BHL (460'FNL & 675'FEL,REV-4)		7311.00	4593.76	475.62	3213290.45	1291032.73	40°07'47.136"N	104°44'13.939"W	point

WELLPATH COMPOSITION - Ref Wellbore: GOBBLER 1N-23HZ AWB Ref Wellpath: GOBBLER 1N-23HZ AWP				
Start MD [ft]	End MD [ft]	Positional Uncertainty Model	Log Name/Comment	Wellbore
17.00	1060.00	Gyrodata standard - Drop gyro or Multi-shot	GYRO SURVEYS <130-1060>	GOBBLER 1N-23HZ AWB
1060.00	7695.00	NaviTrak (MagCorr)	BHI MWD SURVEYS 8 3/4" HOLE <1088-7695>	GOBBLER 1N-23HZ AWB
7695.00	11745.00	OnTrak (Standard)	BHI MWD SURVEYS 6 1/8" HOLE <7765-11745>	GOBBLER 1N-23HZ AWB
11745.00	11805.00	Blind Drilling (std)	Projection to bit	GOBBLER 1N-23HZ AWB



Actual Wellpath Report

GOBBLER 1N-23HZ AWP

Page 5 of 5



REFERENCE WELLPATH IDENTIFICATION			
Operator	ANADARKO E&P COMPANY LP	Slot	SLOT#01 GOBBLER 1N-23HZ (240'FSL & 1100'FEL, SEC.23)
Area	COLORADO	Well	GOBBLER 1N-23HZ
Field	WELD COUNTY (KERR MCGEE)	Wellbore	GOBBLER 1N-23HZ AWB
Facility	SEC.23-T2N-R66W		

WELLPATH COMMENTS				
MD [ft]	Inclination [°]	Azimuth [°]	TVD [ft]	Comment
130.00	1.200	129.990	129.99	Begin GYRO Surveys
1060.00	0.600	256.600	1059.94	Tie-Into GYRO Surveys
1088.00	0.900	189.300	1087.94	Begin BHI MWD Surveys
7738.00	89.129	3.707	7298.07	7" Casing Point
11745.00	89.400	4.600	7307.14	Last BHI MWD Surveys
11805.00	89.400	4.600	7307.77	Projection to Bit