
OXY GRAND JUNCTION

**CC 697-05-53B
GRAND VALLEY
Garfield County , Colorado**

Cement Surface Casing
15-Jan-2012

Post Job Report

The Road to Excellence Starts with Safety

Sold To #: 344034		Ship To #: 2902544		Quote #:		Sales Order #: 9107175	
Customer: OXY GRAND JUNCTION EBUSINESS				Customer Rep: Wylie, Cal			
Well Name: CC			Well #: 697-05-53B			API/UWI #: 05-045-20381	
Field: GRAND VALLEY		City (SAP): DeBeque		County/Parish: Garfield		State: Colorado	
Lat: N 39.554 deg. OR N 39 deg. 33 min. 16.092 secs.				Long: W 108.242 deg. OR W -109 deg. 45 min. 27.432 secs.			
Contractor: H&P 330			Rig/Platform Name/Num: H&P 330				
Job Purpose: Cement Surface Casing							
Well Type: Development Well			Job Type: Cement Surface Casing				
Sales Person: HIMES, JEFFREY			Srvc Supervisor: JAMISON, PRICE			MBU ID Emp #: 229155	

Job Personnel

HES Emp Name	Exp Hrs	Emp #	HES Emp Name	Exp Hrs	Emp #	HES Emp Name	Exp Hrs	Emp #
DEUSSEN, EDWARD Eric	.16	485182	JAMISON, PRICE W	16	229155	JENSEN, SHANE Lynn	16	441759
VANALSTYNE, TROY L	16	420256						

Equipment

HES Unit #	Distance-1 way	HES Unit #	Distance-1 way	HES Unit #	Distance-1 way	HES Unit #	Distance-1 way
10565341	60 mile	10804567	60 mile	10871245	60 mile	11360881	60 mile
11583934	60 mile	4901	60 mile				

Job Hours

Date	On Location Hours	Operating Hours	Date	On Location Hours	Operating Hours	Date	On Location Hours	Operating Hours
1/14/12	14.5	6.5	1/15/12	1.5	1.5			

TOTAL	Total is the sum of each column separately							
--------------	--	--	--	--	--	--	--	--

Job

Formation Name	Top	Bottom	Called Out	Date	Time	Time Zone
Formation Depth (MD)			On Location	14 - Jan - 2012	05:30	MST
Form Type	BHST		Job Started	14 - Jan - 2012	09:30	MST
Job depth MD	2667.5 ft	Job Depth TVD	Job Completed	14 - Jan - 2012	19:12	MST
Water Depth		Wk Ht Above Floor	Departed Loc	15 - Jan - 2012	00:30	MST
Perforation Depth (MD)	From	To		15 - Jan - 2012	01:30	MST

Well Data

Description	New / Used	Max pressure psig	Size in	ID in	Weight lbm/ft	Thread	Grade	Top MD ft	Bottom MD ft	Top TVD ft	Bottom TVD ft
OPEN HOLE				14.75				.	2720.	.	2720.
SURFACE CASING	Unknown		9.625	8.921	36.		J-55	.	2667.5	.	2667.5
PARASIGHT	Unknown		2.	1.657	3.4		100 MY	.	2406.	.	2406.

Sales/Rental/3rd Party (HES)

Description	Qty	Qty uom	Depth	Supplier
PLUG,CMTG,TOP,9 5/8,HWE,8.16 MIN/9.06 MA	1	EA		
R/A DENSOMETER W/CHART RECORDER,/JOB,ZI	1	JOB		
PORT. DATA ACQUIS. W/OPTICEM RT W/HES	1	EA		
ADC (AUTO DENSITY CTRL) SYS, /JOB,ZI	1	JOB		

Tools and Accessories

Type	Size	Qty	Make	Depth	Type	Size	Qty	Make	Depth	Type	Size	Qty	Make
Guide Shoe					Packer					Top Plug			
Float Shoe					Bridge Plug					Bottom Plug			
Float Collar					Retainer					SSR plug set			
Insert Float										Plug Container			
Stage Tool										Centralizers			

Miscellaneous Materials

Gelling Agt		Conc		Surfactant		Conc		Acid Type		Qty		Conc	%
Treatment Fld		Conc		Inhibitor		Conc		Sand Type		Size		Qty	
Fluid Data													
Stage/Plug #: 1													
Fluid #	Stage Type	Fluid Name			Qty	Qty uom	Mixing Density lbm/gal	Yield ft3/sk	Mix Fluid Gal/sk	Rate bbl/min	Total Mix Fluid Gal/sk		
1	Fresh Water Spacer				10.00	bbl	8.4	.0	.0	2.0			
2	Gel Spacer				20.00	bbl	8.4	.0	.0	6.0			
3	Fresh Water Spacer				10.00	bbl	8.4	.0	.0	6.0			
4	Lead Cement	VERSACEM (TM) SYSTEM (452010)			1060.0	sacks	12.3	2.33	12.62	6.0	12.62		
5	Tail Cement	VERSACEM (TM) SYSTEM (452010)			160.0	sacks	12.8	2.07	10.67	6.0	10.67		
6	Displacement				202.7	bbl	8.4	.0	.0	6.0			
Calculated Values		Pressures			Volumes								
Displacement	202.7	Shut In: Instant			Lost Returns		NO	Cement Slurry		500	Pad		
Top Of Cement	SURFACE	5 Min			Cement Returns		92	Actual Displacement		202.7	Treatment		
Frac Gradient		15 Min			Spacers		40	Load and Breakdown			Total Job		752
Rates													
Circulating	RIG	Mixing			6	Displacement		6	Avg. Job		6		
Cement Left In Pipe	Amount	45.3 ft	Reason		Shoe Joint								
Frac Ring # 1 @	ID	Frac ring # 2 @	ID	Frac Ring # 3 @	ID	Frac Ring # 4 @	ID						
The Information Stated Herein Is Correct					Customer Representative Signature								

The Road to Excellence Starts with Safety

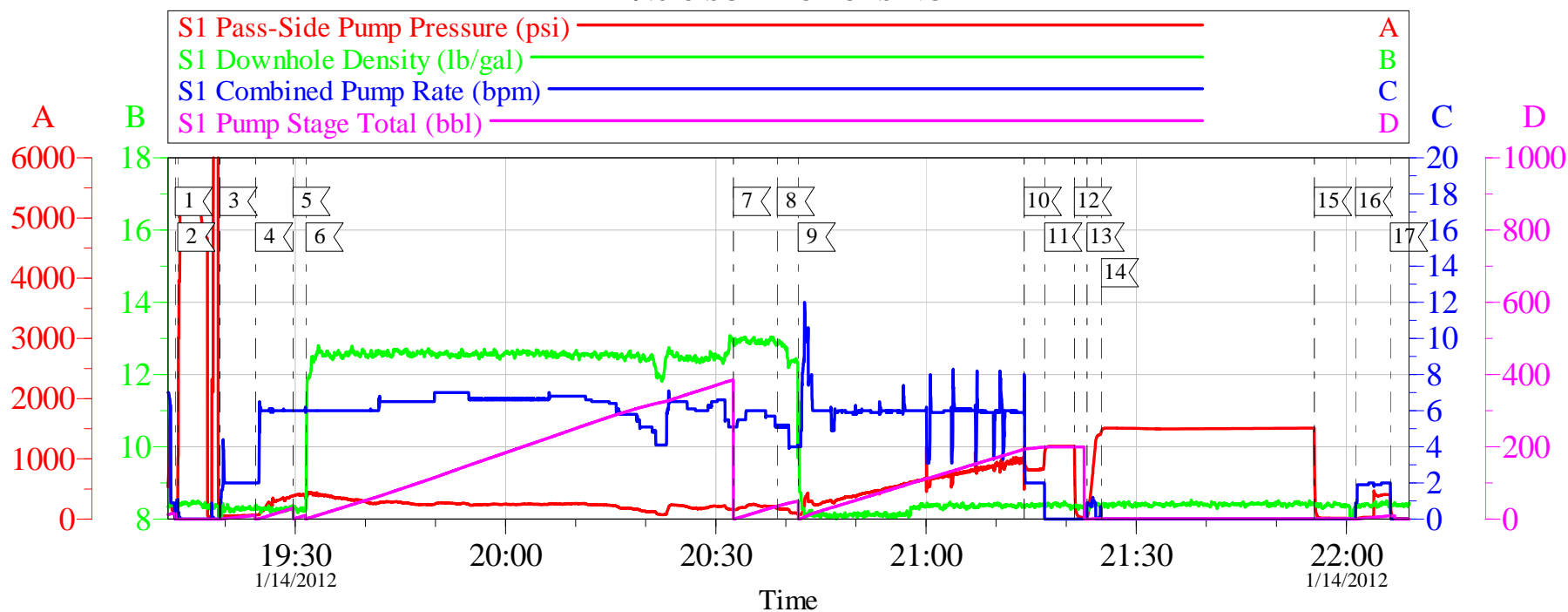
Sold To #: 344034	Ship To #: 2902544	Quote #:	Sales Order #: 9107175
Customer: OXY GRAND JUNCTION EBUSINESS		Customer Rep: Wylie, Cal	
Well Name: CC	Well #: 697-05-53B	API/UWI #: 05-045-20381	
Field: GRAND VALLEY	City (SAP): DeBeque	County/Parish: Garfield	State: Colorado
Legal Description:			
Lat: N 39.554 deg. OR N 39 deg. 33 min. 16.092 secs.		Long: W 108.242 deg. OR W -109 deg. 45 min. 27.432 secs.	
Contractor: H&P 330		Rig/Platform Name/Num: H&P 330	
Job Purpose: Cement Surface Casing			Ticket Amount:
Well Type: Development Well		Job Type: Cement Surface Casing	
Sales Person: HIMES, JEFFREY		Srv Supervisor: JAMISON, PRICE	MBU ID Emp #: 229155

Activity Description	Date/Time	Cht #	Rate bbl/min	Volume bbl		Pressure psig		Comments
				Stage	Total	Tubing	Casing	
Call Out	01/14/2012 05:30							TD 2720 TP 2667.5 SURFACE CASING 9.625 36 PPF J-55 S.J 45.34 MUD 9.2 PPG HOLE SIZE 14.75 PARASIGHT STRING 2406 T.T.
Depart Yard Safety Meeting	01/14/2012 06:50							
Crew Leave Yard	01/14/2012 07:00							
Arrive At Loc	01/14/2012 09:30							
Assessment Of Location Safety Meeting	01/14/2012 09:45							
Pre-Rig Up Safety Meeting	01/14/2012 10:00							
Wait on Customer or Customer Sub-Contractor Equip	01/14/2012 11:00							RUNNING CASING & CIRCULATNG
Wait on Customer or Customer Sub-Contractor Equipm	01/14/2012 18:30							
Pre-Job Safety Meeting	01/14/2012 18:45							
Start Job	01/14/2012 19:12							
Test Lines	01/14/2012 19:13						5000. 0	
Pump Water	01/14/2012 19:19		2	10			68.0	FRESH WATER
Pump Spacer 1	01/14/2012 19:24		6	20			359.0	GEL WATER SPACER
Pump Water	01/14/2012 19:29		6	10			408.0	FRESH WATER

Activity Description	Date/Time	Cht #	Rate bbl/min	Volume bbl		Pressure psig		Comments
				Stage	Total	Tubing	Casing	
Pump Lead Cement	01/14/2012 19:31		6	439.9			408.0	MIXED @ 12.3 YIELD 2.33 WAT/REQ 12.62 1060 SKS
Pump Tail Cement	01/14/2012 20:32		6	59			230.0	MIXED @ 12.8 PPG YIELD 2.07 WAT/REQ 10.67 160 SKS
Drop Plug	01/14/2012 20:38							
Pump Displacement	01/14/2012 20:41		6					FRESH WATER
Slow Rate	01/14/2012 21:14		2	192			1009.0	
Bump Plug	01/14/2012 21:16		2	202.7			825.0	PRESSURED UP TO PSI 1208 PSI
Check Floats	01/14/2012 21:21							FLOATS HELD
Pressure Up Well	01/14/2012 21:22						1500.0	CASING TEST
Monitor Pressure	01/14/2012 21:25							WATCH PRESSURE FOR 30 MINUTES
Release Casing Pressure	01/14/2012 21:55						1512.0	FLOATS HELD
Pump Water	01/14/2012 22:01		2	10			407.0	PARASIGHT STRING
Shutdown	01/14/2012 22:06							CHECK VALVE HOLDING
Pump Cement	01/14/2012 22:38		2	58				MIXED @ 12.5 PPG YIELD WAT/REQ 80 SKS
End Job	01/14/2012 23:34							GOT RETURNS 200 BBLS AWAY ON LEAD CEMENT
Pressure Up Well	01/14/2012 23:54						1500.0	CASING PRESSURE TEST
Monitor Pressure	01/14/2012 23:55							WATCH PRESSURE FOR 30 MINUTES
Release Casing Pressure	01/15/2012 00:27						1609.0	
End Job	01/15/2012 00:29							
Post-Job Safety Meeting (Pre Rig-Down)	01/15/2012 00:40							CEMENT BACK TO SURFACE 92 BBLS
Depart Location Safety Meeting	01/15/2012 01:20							CASING WAS NOT MOVED THROUGHOUT JOB
Crew Leave Location	01/15/2012 01:30							THANKS FOR USING HALLIBURTON BILL JAMISON & CREW

OXY CC 697-05-53B

9.625 SURFACE CASING



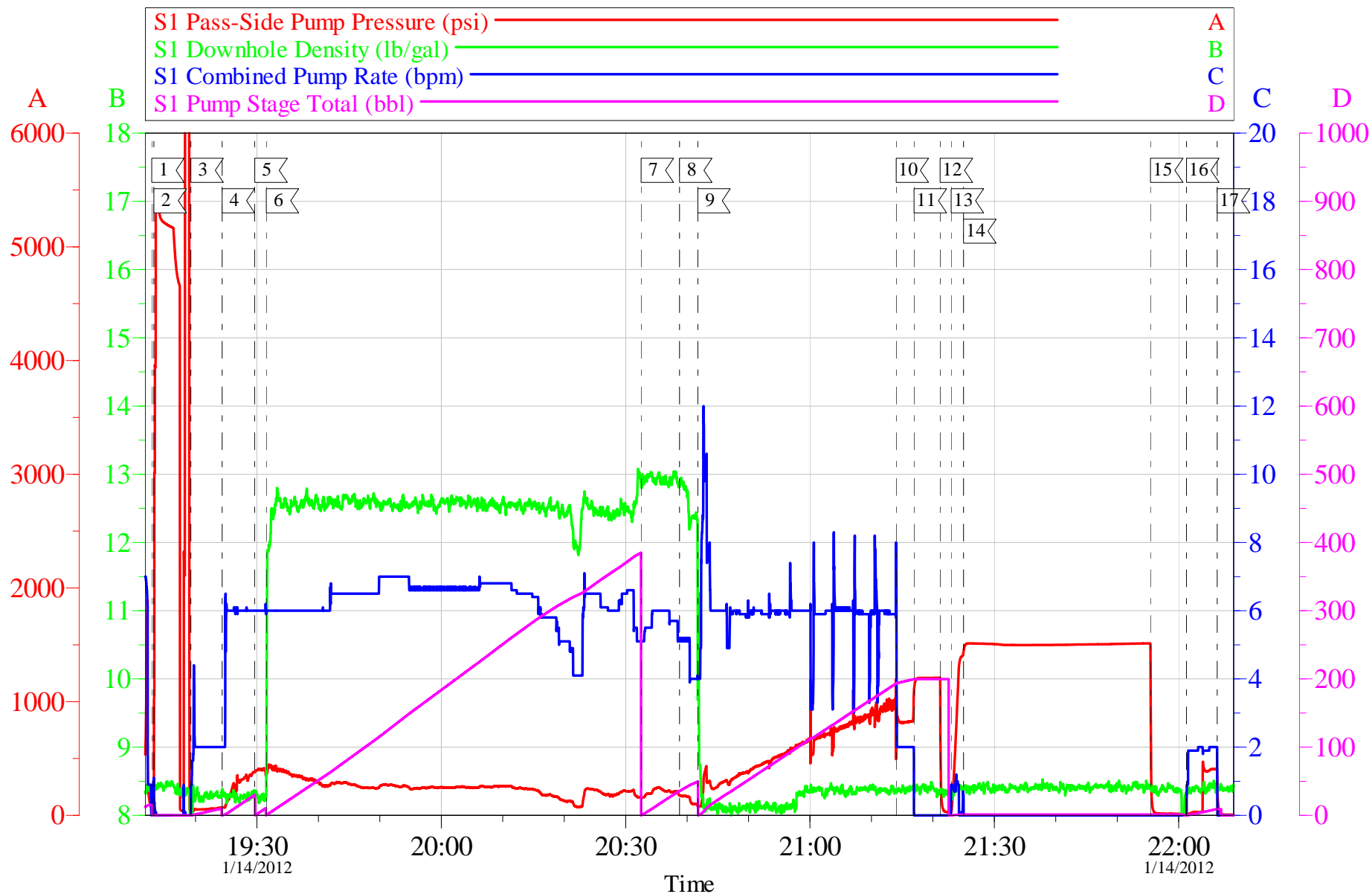
Local Event Log			
1	START JOB	19:12:52	2
2	TEST LINES	19:13:14	3
3	START FRESH WATER SPACER	19:19:15	4
4	START GEL WATER	19:24:20	5
5	START FRESH WATER SPACER	19:29:39	6
6	PUMP LEAD CEMENT	19:31:31	7
7	START TAIL CEMENT	20:32:31	8
8	DROP PLUG	20:38:46	9
9	START DISPLACEMENT	20:41:45	10
10	SLOW RATE	21:14:01	11
11	BUMP PLUG	21:16:57	12
12	CHECK FLOATS	21:21:11	13
13	START CASING PRESSURE TEST	21:22:59	14
14	WATCH PRESSURE	21:25:00	15
15	RELEASE PRESSURE	21:55:25	16
16	PUMP DOWN PARASIGHT STRING	22:01:17	17
17	SHUT DOWN	22:06:17	

Customer: OXY	Job Date: 14-Jan-2012	Sales Order #: 9107175
Well Description: CC 697-05-53B	Job Type: CEMENT	ADC Used: YES
Company Rep: CAL WYLIE	Cement Supervisor: BILL JAMISON	Elite # 6 ED DEUSSEN

OptiCem v6.4.10
14-Jan-12 22:23

OXY CC 697-05-53B

9.625 SURFACE CASING



Customer: OXY
Well Description: CC 697-05-53B
Company Rep: CAL WYLIE

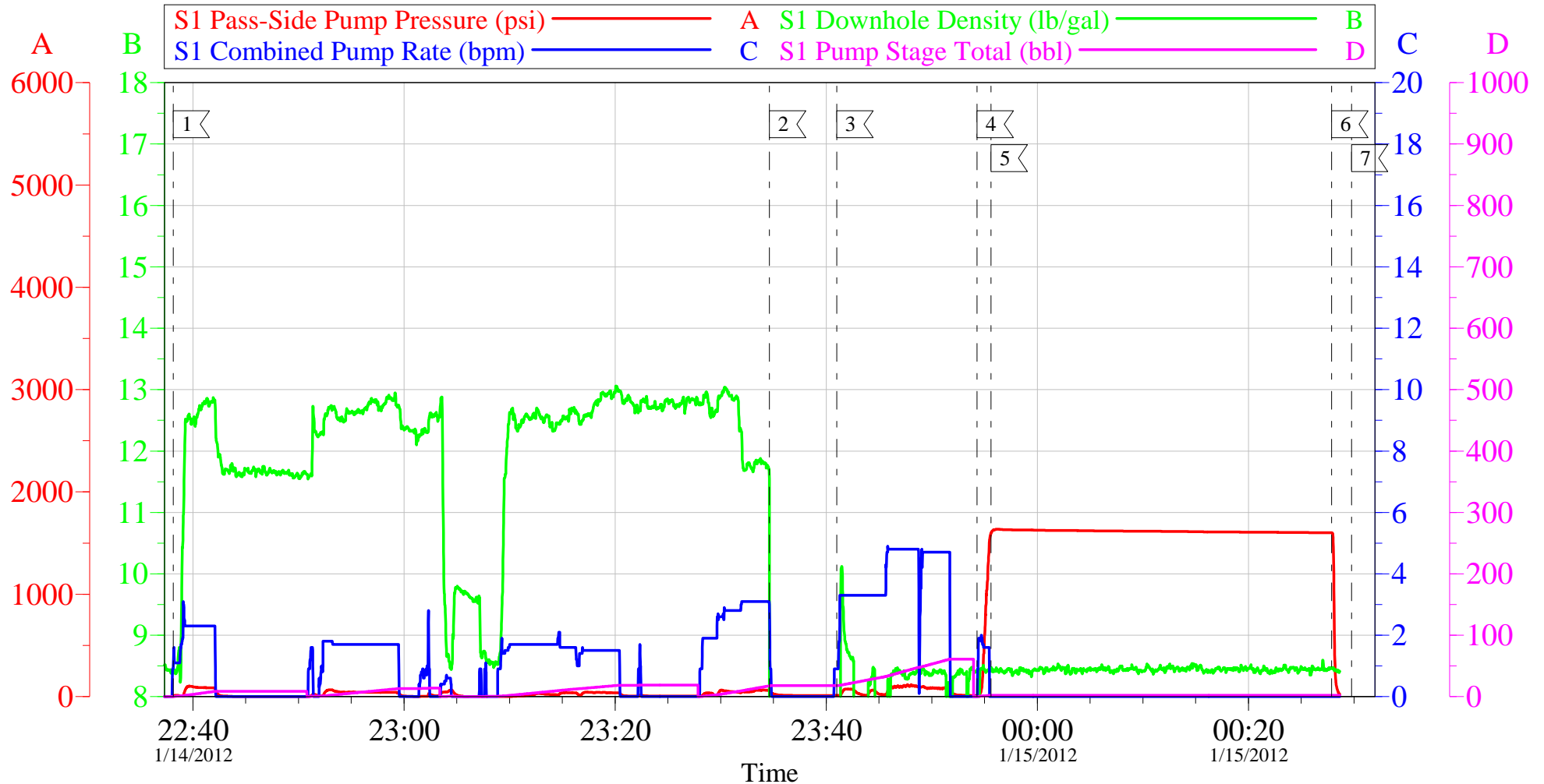
Job Date: 14-Jan-2012
Job Type: CEMENT
Cement Supervisor: BILL JAMISON

Sales Order #: 9107175
ADC Used: YES
Elite # 6 ED DEUSSEN

OptiCem v6.4.10
14-Jan-12 22:25

OXY CC 697-05-53B

TOP OUT



Local Event Log

1	START TOP OUT	1/14/2012 22:38:08	2	END TOP OUT	1/14/2012 23:34:38
3	WASH PUMPS & LINES	1/14/2012 23:41:00	4	START CASING PRESSURE TEST	1/14/2012 23:54:18
5	WATCH PRESSURE	1/14/2012 23:55:37	6	RELEASE PRESSURE	1/15/2012 00:27:54
7	END JOB	1/15/2012 00:29:47			

Customer: OXY
Well Description: CC-697-05-53B
Company Rep: CAL WYLIE

Job Date: 14-Jan-2012
Job Type: CEMENT
Cement Supervisor: BILL JAMISON

Sales Order #: 9107175
ADC Used: YES
Elite # 6 SHANE JENSEN

OptiCem v6.4.10
15-Jan-12 00:30

HALLIBURTON

Water Analysis Report

Company: OXY

Submitted by: BILL JAMISON

Attention: J.Trout

Lease C.C.

Well # 697-05-53B

Date: 1/14/2012

Date Rec.: 1/14/2012

S.O.# 9107175

Job Type: SURFACE

Specific Gravity	<i>MAX</i>	<i>1</i>
pH	<i>8</i>	<i>6.9</i>
Potassium (K)	<i>5000</i>	<i>400</i> Mg / L
Calcium (Ca)	<i>500</i>	<i>250</i> Mg / L
Iron (FE2)	<i>300</i>	<i>0</i> Mg / L
Chlorides (Cl)	<i>3000</i>	<i>0</i> Mg / L
Sulfates (SO ₄)	<i>1500</i>	<i>-200</i> Mg / L
Chlorine (Cl ₂)		<i>0</i> Mg / L
Temp	<i>40-80</i>	<i>55</i> Deg
Total Dissolved Solids		<i>650</i> Mg / L

Respectfully: BILL JAMISON

Title: CEMENTING SUPERVISOR

Location: Grand Junction, CO

NOTICE:

This report is limited to the described sample tested. Any person using or relying on this report agrees that Halliburton shall not be liable for any loss or damage whether due to act or omission resulting from such report or

Sales Order #: 9107175	Line Item: 10	Survey Conducted Date: 1/15/2012
Customer: OXY GRAND JUNCTION EBUSINESS		Job Type (BOM): CMT SURFACE CASING BOM
Customer Representative: CAL WYLIE		API / UWI: (leave blank if unknown) 05-045-20381
Well Name: CC		Well Number: 697-05-53B
Well Type: Development Well	Well Country: United States of America	
H2S Present: No	Well State: Colorado	Well County: Garfield

Dear Customer,

We hope that you were satisfied with the service quality of this job performed by Halliburton. It is the aim of our management and service personnel to deliver equipment and service of a standard unmatched in the service sector of the energy industry.

Please take the time to let us know if our performance met with your satisfaction. Please be as critical as possible to ensure we constantly improve our service. Your comments are of great value to us and are intended for the exclusive use of Halliburton.

CUSTOMER SATISFACTION SURVEY

CATEGORY	CUSTOMER SATISFACTION RESPONSE	
Survey Conducted Date	The date the survey was conducted	1/15/2012
Survey Interviewer	The survey interviewer is the person who initiated the survey.	PRICE JAMISON (HAL9235)
Customer Participation	Did the customer participate in this survey? (Y/N)	Yes
Customer Representative	Enter the Customer representative name	CAL WYLIE
HSE	Was our HSE performance satisfactory? Circle Y or N	Yes
Equipment	Were you satisfied with our Equipment? Circle Y or N	Yes
Personnel	Were you satisfied with our people? Circle Y or N	Yes
Customer Comment	Customer's Comment	GRATE JOB THANKS

CUSTOMER SIGNATURE

Sales Order #: 9107175	Line Item: 10	Survey Conducted Date: 1/15/2012
Customer: OXY GRAND JUNCTION EBUSINESS		Job Type (BOM): CMT SURFACE CASING BOM
Customer Representative: CAL WYLIE		API / UWI: (leave blank if unknown) 05-045-20381
Well Name: CC		Well Number: 697-05-53B
Well Type: Development Well	Well Country: United States of America	
H2S Present: No	Well State: Colorado	Well County: Garfield

KEY PERFORMANCE INDICATORS

General	
Survey Conducted Date The date the survey was conducted	1/15/2012

Cementing KPI Survey	
Type of Job Select the type of job. (Cementing or Non-Cementing)	0
Select the Maximum Deviation range for this Job What is the highest deviation for the job you just completed? This may not be the maximum well deviation.	Deviated
Total Operating Time (hours) Total Operating Hours Including Rig-up, Pumping, Rig-down. Enter in decimal format.	7
HSE Incident, Accident, Injury HSE Incident, Accident, Injury. This should be recordable incidents only.	No
Was the job purpose achieved? Was the job delivered correctly as per customer agreed design?	Yes
Operating Hours (Pumping Hours) Total number of hours pumping fluid on this job. Enter in decimal format.	5
Customer Non-Productive Rig Time (hrs) Lost time due to Halliburton in the start, execution, or completion of an ordered service or product, or delays in a follow-on service. Enter in decimal format. 0 if none.	0
Type of Rig Classification Job Was Performed Type Of Rig (classification) Job Was Performed On	Drilling Rig (Portable)
Number Of JSAs Performed Number Of Jsas Performed	5
Number of Unplanned Shutdowns Unplanned shutdown is when injection stops for any period of time.	0
Was this a Primary Cement Job (Yes / No)	Yes

Sales Order #: 9107175	Line Item: 10	Survey Conducted Date: 1/15/2012
Customer: OXY GRAND JUNCTION EBUSINESS		Job Type (BOM): CMT SURFACE CASING BOM
Customer Representative: CAL WYLIE		API / UWI: (leave blank if unknown) 05-045-20381
Well Name: CC		Well Number: 697-05-53B
Well Type: Development Well	Well Country: United States of America	
H2S Present: No	Well State: Colorado	Well County: Garfield

Primary Cement Job= Casing job, Liner job, or Tie-back job.	
Did We Run Wiper Plugs? Did We Run Top And Bottom Casing Wiper Plugs?	Top
Mixing Density of Job Stayed in Designed Density Range (0-100%) Density Range defined as +/- .20 ppg. Calculation: Total BBLs cement mixed at designed density divided by total BBLs of cement multiplied by 100	98
Was Automated Density Control Used? Was Automated Density Control (ADC) Used ?	Yes
Pump Rate (percent) of Job Stayed At Designed Pump Rate Pump Rate range defined as +/- 1bbl/min. Calculation: Total BBLs of fluid pumped at the designed rate divided by Total BBLs of fluid pumped, multiplied by 100	98
Nbr of Remedial Sqz Jobs Rqd - Competition Number Of Remedial Squeeze Jobs Required After Primary Job Performed By Competition	0
Nbr of Remedial Plug Jobs Rqd - HES Number Of Remedial Plug Jobs Needed After Primary Plug Pumped By HES	0
Nbr of Remedial Sqz Jobs Rqd - HES Number Of Remedial Squeeze Jobs Required After Primary Job Performed By HES	0