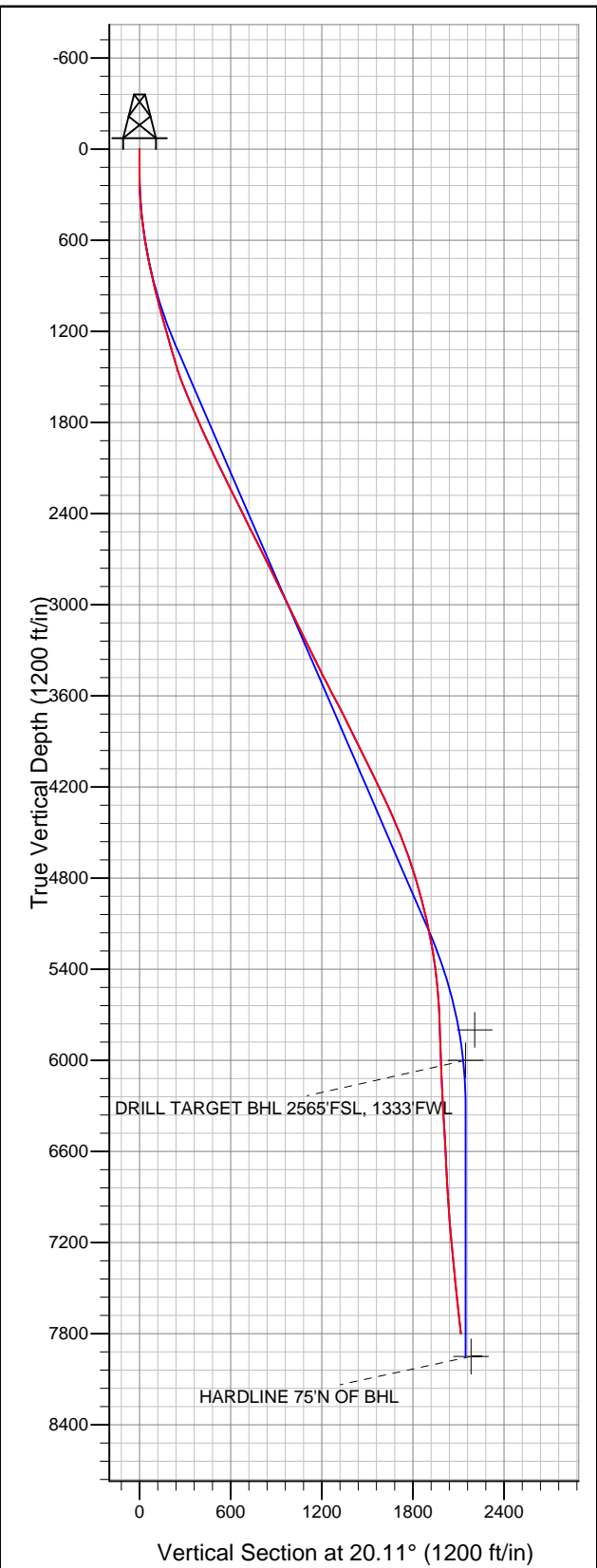


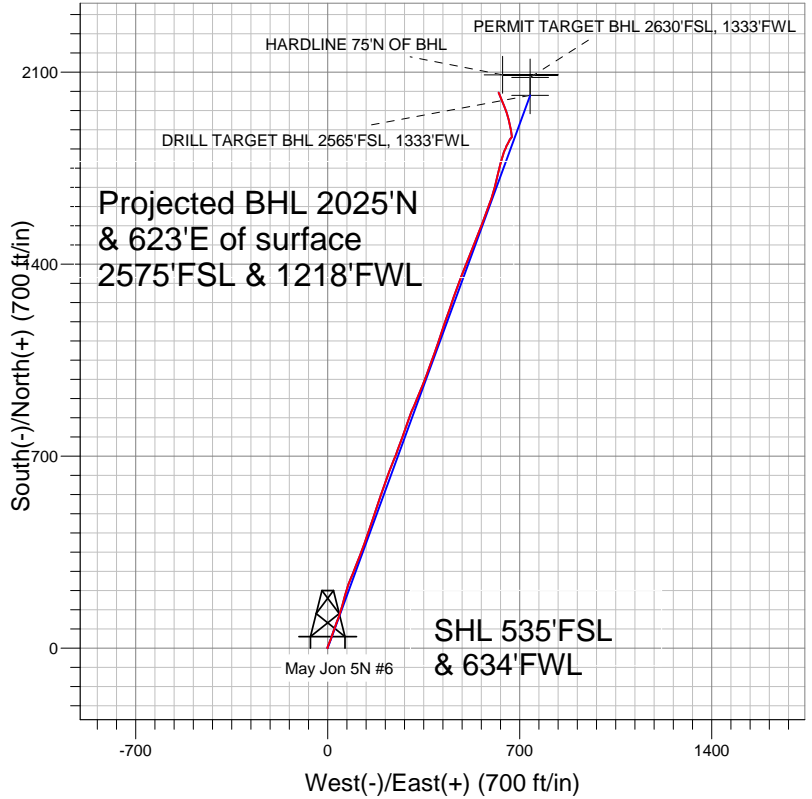


Well Name: May Jon 5N #6

Surface Location: May Jon 4 Pad Sec.5-T2N-R68W
North American Datum 1983 US State Plane 1983 Colorado Northern Zone
Ground Elevation: 4931.0
+N/-S +E/-W Northing Easting Latitude Longitude Slot
0.0 0.0 1302248.75 3130134.40 40.162130 -105.034380
Original Well Elev WELL @ 4944.0ft (Original Well Elev)



Sundance Energy, Weld County, CO



LEGEND

- May Jon 5N #6, Wellbore #1, Plan #1 (6-28-11) V0
- Wellbore #1
- Survey #1

Final Survey Plot

Projected Final Survey -
8206'MD & 7799'TVD @ 2116'VS
8.8 deg Inc 337.5 deg AZ

Project: SEC.5-T2N-R68W
Site: May Jon 4 Pad Sec.5-T2N-R68W
Well: May Jon 5N #6
Plan: Wellbore #1



Sundance Energy, Weld County, CO

SEC.5-T2N-R68W

May Jon 4 Pad Sec.5-T2N-R68W

May Jon 5N #6

Wellbore #1

Survey: Survey #1

Standard Survey Report

02 December, 2011

Survey	Wellbore Data									
	Measured Depth (ft)	Inclination (°)	Azimuth (°)	Vertical Depth (ft)	+N/-S (ft)	+E/-W (ft)	Vertical Section (ft)	Dogleg Rate (°/100ft)	Build Rate (°/100ft)	Turn Rate (°/100ft)
Survey Data	0.0	0.00	0.00	0.0	0.0	0.0	0.0	0.00	0.00	0.00
	94.0	0.50	241.90	94.0	-0.2	-0.4	-0.3	0.53	0.53	0.00
	184.0	0.60	311.50	184.0	-0.1	-1.1	-0.4	0.70	0.11	77.33
	272.0	2.40	13.90	272.0	2.0	-1.0	1.6	2.49	2.05	70.91
	365.0	4.60	21.10	364.8	7.4	0.8	7.2	2.41	2.37	7.74
	456.0	6.30	23.40	455.4	15.4	4.1	15.9	1.88	1.87	2.53
	549.0	8.40	21.10	547.6	26.4	8.6	27.8	2.28	2.26	-2.47
	640.0	9.90	20.60	637.4	39.9	13.8	42.2	1.65	1.65	-0.55
	731.0	11.00	18.60	726.9	55.5	19.3	58.7	1.27	1.21	-2.20
	779.0	11.50	19.20	774.0	64.3	22.3	68.1	1.07	1.04	1.25
	829.0	12.30	19.50	822.9	74.1	25.7	78.4	1.60	1.60	0.60
	927.0	12.80	20.60	918.6	94.1	33.0	99.7	0.57	0.51	1.12
1,020.0	15.50	17.80	1,008.8	115.6	40.5	122.4	2.99	2.90	-3.01	

Company:	Sundance Energy, Weld County, CO	Local Co-ordinate Reference:	Well May Jon 5N #6
Project:	SEC.5-T2N-R68W	TVD Reference:	WELL @ 4944.0ft (Original Well Elev)
Site:	May Jon 4 Pad Sec.5-T2N-R68W	MD Reference:	WELL @ 4944.0ft (Original Well Elev)
Well:	May Jon 5N #6	North Reference:	True
Wellbore:	Wellbore #1	Survey Calculation Method:	Minimum Curvature
Design:	Wellbore #1	Database:	Landmark

Survey										
Measured Depth (ft)	Inclination (°)	Azimuth (°)	Vertical Depth (ft)	+N/-S (ft)	+E/-W (ft)	Vertical Section (ft)	Dogleg Rate (°/100ft)	Build Rate (°/100ft)	Turn Rate (°/100ft)	
1,114.0	16.30	17.80	1,099.2	140.1	48.3	148.1	0.85	0.85	0.00	
1,208.0	15.90	15.70	1,189.5	165.0	55.9	174.2	0.75	-0.43	-2.23	
1,303.0	15.60	15.10	1,280.9	189.9	62.7	199.9	0.36	-0.32	-0.63	
1,399.0	15.70	15.70	1,373.4	214.9	69.6	225.7	0.20	0.10	0.63	
1,493.0	18.50	23.00	1,463.2	240.8	78.9	253.3	3.75	2.98	7.77	
1,587.0	20.90	21.30	1,551.7	270.2	90.8	284.9	2.62	2.55	-1.81	
1,681.0	23.00	21.60	1,638.9	302.9	103.6	320.0	2.24	2.23	0.32	
1,776.0	23.90	21.80	1,726.0	338.0	117.6	357.8	0.95	0.95	0.21	
1,871.0	24.40	20.60	1,812.7	374.2	131.7	396.7	0.74	0.53	-1.26	
1,965.0	24.60	17.90	1,898.3	411.0	144.5	435.7	1.21	0.21	-2.87	
2,059.0	24.60	18.60	1,983.7	448.2	156.8	474.8	0.31	0.00	0.74	
2,153.0	25.90	18.30	2,068.7	486.2	169.4	514.9	1.39	1.38	-0.32	
2,248.0	26.30	20.20	2,154.1	525.7	183.2	556.6	0.98	0.42	2.00	
2,343.0	27.00	17.90	2,239.0	566.0	197.1	599.2	1.31	0.74	-2.42	
2,438.0	26.60	19.20	2,323.8	606.6	210.7	642.0	0.75	-0.42	1.37	
2,533.0	26.20	21.50	2,408.9	646.2	225.4	684.3	1.16	-0.42	2.42	
2,626.0	25.90	21.80	2,492.4	684.1	240.5	725.1	0.35	-0.32	0.32	
2,722.0	27.10	20.20	2,578.3	724.1	255.8	767.9	1.45	1.25	-1.67	
2,817.0	26.90	20.20	2,663.0	764.6	270.7	811.1	0.21	-0.21	0.00	
2,911.0	26.70	19.20	2,746.9	804.5	285.0	853.4	0.52	-0.21	-1.06	
3,006.0	25.34	19.90	2,832.2	843.8	298.9	895.1	1.47	-1.43	0.74	
3,101.0	26.10	23.60	2,917.8	882.0	314.2	936.3	1.87	0.80	3.89	
3,195.0	26.10	22.90	3,002.2	920.0	330.6	977.6	0.33	0.00	-0.74	
3,288.0	26.50	20.90	3,085.6	958.3	345.9	1,018.8	1.05	0.43	-2.15	
3,383.0	25.90	21.30	3,170.9	997.4	361.0	1,060.7	0.66	-0.63	0.42	
3,477.0	26.70	19.70	3,255.1	1,036.4	375.6	1,102.4	1.14	0.85	-1.70	
3,571.0	25.70	20.10	3,339.5	1,075.4	389.7	1,143.9	1.08	-1.06	0.43	
3,665.0	26.50	17.90	3,423.9	1,114.5	403.2	1,185.2	1.34	0.85	-2.34	
3,760.0	28.00	18.10	3,508.3	1,155.9	416.6	1,228.7	1.58	1.58	0.21	
3,854.0	27.20	20.20	3,591.6	1,197.0	430.9	1,272.2	1.34	-0.85	2.23	
3,950.0	28.00	18.80	3,676.7	1,239.0	445.7	1,316.7	1.07	0.83	-1.46	
4,045.0	26.40	19.70	3,761.2	1,280.0	460.0	1,360.1	1.74	-1.68	0.95	
4,140.0	25.50	19.40	3,846.6	1,319.1	473.9	1,401.7	0.96	-0.95	-0.32	
4,234.0	26.70	21.50	3,931.0	1,357.9	488.4	1,443.0	1.61	1.28	2.23	
4,329.0	25.60	20.80	4,016.3	1,396.9	503.5	1,484.9	1.20	-1.16	-0.74	
4,422.0	26.50	21.30	4,099.9	1,435.0	518.2	1,525.7	1.00	0.97	0.54	
4,517.0	26.60	23.60	4,184.9	1,474.3	534.4	1,568.1	1.09	0.11	2.42	
4,611.0	25.50	21.80	4,269.3	1,512.3	550.3	1,609.4	1.44	-1.17	-1.91	
4,706.0	24.10	19.70	4,355.5	1,549.6	564.5	1,649.2	1.74	-1.47	-2.21	
4,800.0	22.50	20.10	4,441.9	1,584.5	577.1	1,686.4	1.71	-1.70	0.43	
4,895.0	21.80	19.70	4,529.9	1,618.2	589.3	1,722.2	0.75	-0.74	-0.42	
4,990.0	20.30	17.90	4,618.5	1,650.5	600.3	1,756.3	1.72	-1.58	-1.89	
5,083.0	18.50	14.60	4,706.2	1,680.1	609.0	1,787.1	2.27	-1.94	-3.55	
5,177.0	16.70	12.80	4,795.8	1,707.7	615.8	1,815.3	2.00	-1.91	-1.91	
5,271.0	15.70	13.00	4,886.1	1,733.3	621.6	1,841.4	1.07	-1.06	0.21	
5,366.0	14.20	15.30	4,977.9	1,757.1	627.6	1,865.7	1.70	-1.58	2.42	
5,461.0	13.10	14.80	5,070.2	1,778.7	633.4	1,888.1	1.16	-1.16	-0.53	
5,557.0	11.30	17.90	5,164.0	1,798.2	639.1	1,908.3	1.99	-1.88	3.23	
5,652.0	10.20	23.70	5,257.4	1,814.8	645.3	1,926.0	1.62	-1.16	6.11	
5,747.0	8.00	21.10	5,351.2	1,828.6	651.1	1,941.0	2.36	-2.32	-2.74	
5,843.0	6.80	32.70	5,446.4	1,839.6	656.6	1,953.2	1.99	-1.25	12.08	
5,939.0	5.20	25.50	5,541.8	1,848.4	661.5	1,963.1	1.84	-1.67	-7.50	
6,034.0	3.60	31.10	5,636.6	1,854.8	664.9	1,970.3	1.74	-1.68	5.89	
6,128.0	1.70	51.30	5,730.5	1,858.2	667.5	1,974.4	2.22	-2.02	21.49	

Company:	Sundance Energy, Weld County, CO	Local Co-ordinate Reference:	Well May Jon 5N #6
Project:	SEC.5-T2N-R68W	TVD Reference:	WELL @ 4944.0ft (Original Well Elev)
Site:	May Jon 4 Pad Sec.5-T2N-R68W	MD Reference:	WELL @ 4944.0ft (Original Well Elev)
Well:	May Jon 5N #6	North Reference:	True
Wellbore:	Wellbore #1	Survey Calculation Method:	Minimum Curvature
Design:	Wellbore #1	Database:	Landmark

Survey

Measured Depth (ft)	Inclination (°)	Azimuth (°)	Vertical Depth (ft)	+N/-S (ft)	+E/-W (ft)	Vertical Section (ft)	Dogleg Rate (°/100ft)	Build Rate (°/100ft)	Turn Rate (°/100ft)
6,204.0	1.85	39.95	5,806.4	1,859.8	669.2	1,976.5	0.50	0.20	-14.93
PERMIT TARGET BHL 2630'FSL, 1333'FWL									
6,224.0	1.90	37.30	5,826.4	1,860.3	669.6	1,977.1	0.50	0.25	-13.27
6,349.0	2.60	6.70	5,951.3	1,864.8	671.2	1,981.9	1.09	0.56	-24.48
6,404.5	2.59	1.33	6,006.7	1,867.3	671.3	1,984.3	0.44	-0.03	-9.68
DRILL TARGET BHL 2565'FSL, 1333'FWL									
6,474.0	2.60	354.60	6,076.2	1,870.5	671.2	1,987.2	0.44	0.02	-9.68
6,601.0	3.10	347.50	6,203.0	1,876.7	670.2	1,992.7	0.48	0.39	-5.59
6,725.0	3.50	345.60	6,326.8	1,883.6	668.6	1,998.6	0.33	0.32	-1.53
6,852.0	3.80	354.60	6,453.6	1,891.6	667.2	2,005.6	0.51	0.24	7.09
6,978.0	4.00	347.70	6,579.3	1,900.0	665.9	2,013.1	0.40	0.16	-5.48
7,105.0	3.40	345.20	6,706.0	1,908.0	664.0	2,019.9	0.49	-0.47	-1.97
7,230.0	3.80	345.80	6,830.8	1,915.6	662.0	2,026.4	0.32	0.32	0.48
7,357.0	4.60	348.60	6,957.4	1,924.6	660.0	2,034.2	0.65	0.63	2.20
7,482.0	5.80	344.50	7,081.9	1,935.6	657.3	2,043.6	1.00	0.96	-3.28
7,607.0	6.30	343.00	7,206.2	1,948.3	653.6	2,054.2	0.42	0.40	-1.20
7,733.0	7.10	339.80	7,331.4	1,962.2	648.9	2,065.7	0.70	0.63	-2.54
7,859.0	8.00	337.20	7,456.3	1,977.6	642.8	2,078.0	0.76	0.71	-2.06
7,986.0	8.50	337.20	7,581.9	1,994.4	635.7	2,091.4	0.39	0.39	0.00
8,160.0	8.80	337.50	7,754.0	2,018.6	625.6	2,110.6	0.17	0.17	0.17
8,206.0	8.80	337.50	7,799.4	2,025.1	623.0	2,115.8	0.00	0.00	0.00
HARDLINE 75'N OF BHL									

Checked By: _____ Approved By: _____ Date: _____