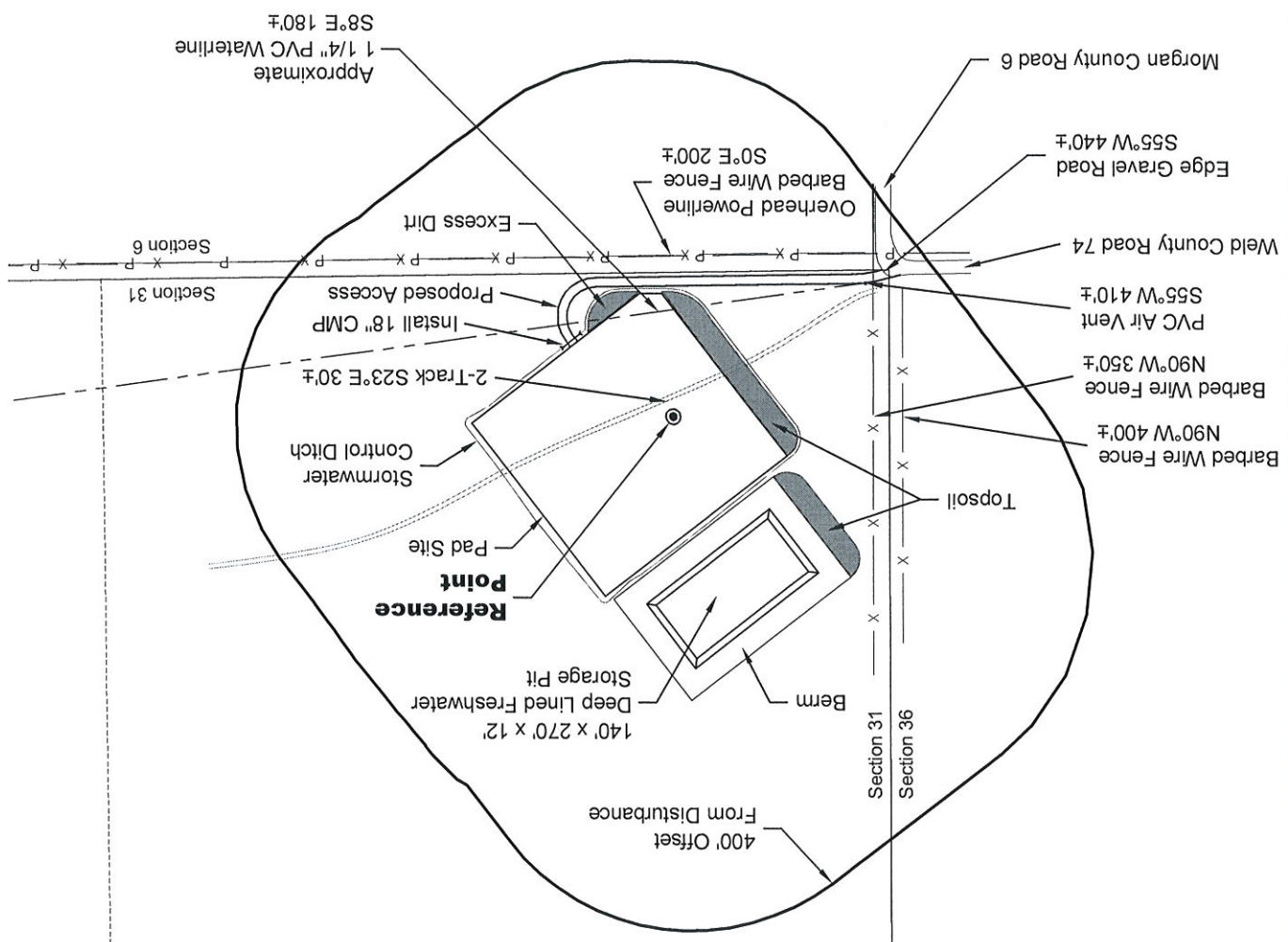


**LAND SURVEYING AND MAPPING**  
**LAFAYETTE - WINTER PARK**  
 Ph 303 666 0379 Fx 303 665 6320

**CONDOR ENERGY TECHNOLOGY LLC**  
 FORD FAMILY TRUST 2H PAD  
 LOT 4 SECTION 31 T7N R59W  
 6th PM WELD COUNTY COLORADO

**NOTE:**  
 DISTURBANCE ACREAGE:  
 4.4± DRILLING OPERATIONS  
 2.0± FRESHWATER STORAGE PIT  
 1.0± INTERIM RECLAIM  
 ALL PRODUCTION FACILITIES WILL BE ON PAD.  
 2/2/12



VEGETATION:  
 PASTURE  
 SURFACE USE:  
 GRAZING

<b>REFERENCE POINT</b>
LATITUDE: 40.52510
LONGITUDE: -104.03099
FOOTAGE: 250 FSL 375 FWL
GROUND ELEVATION: 4923.6
PDOP: 2.0 DATE: 1/25/2012
INSTRUMENT OPERATOR:
MARC WOODARD

**LOCATION DRAWING**