

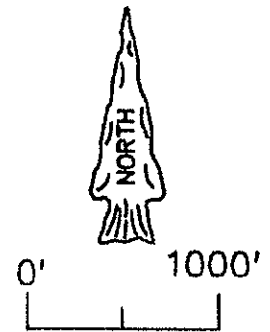
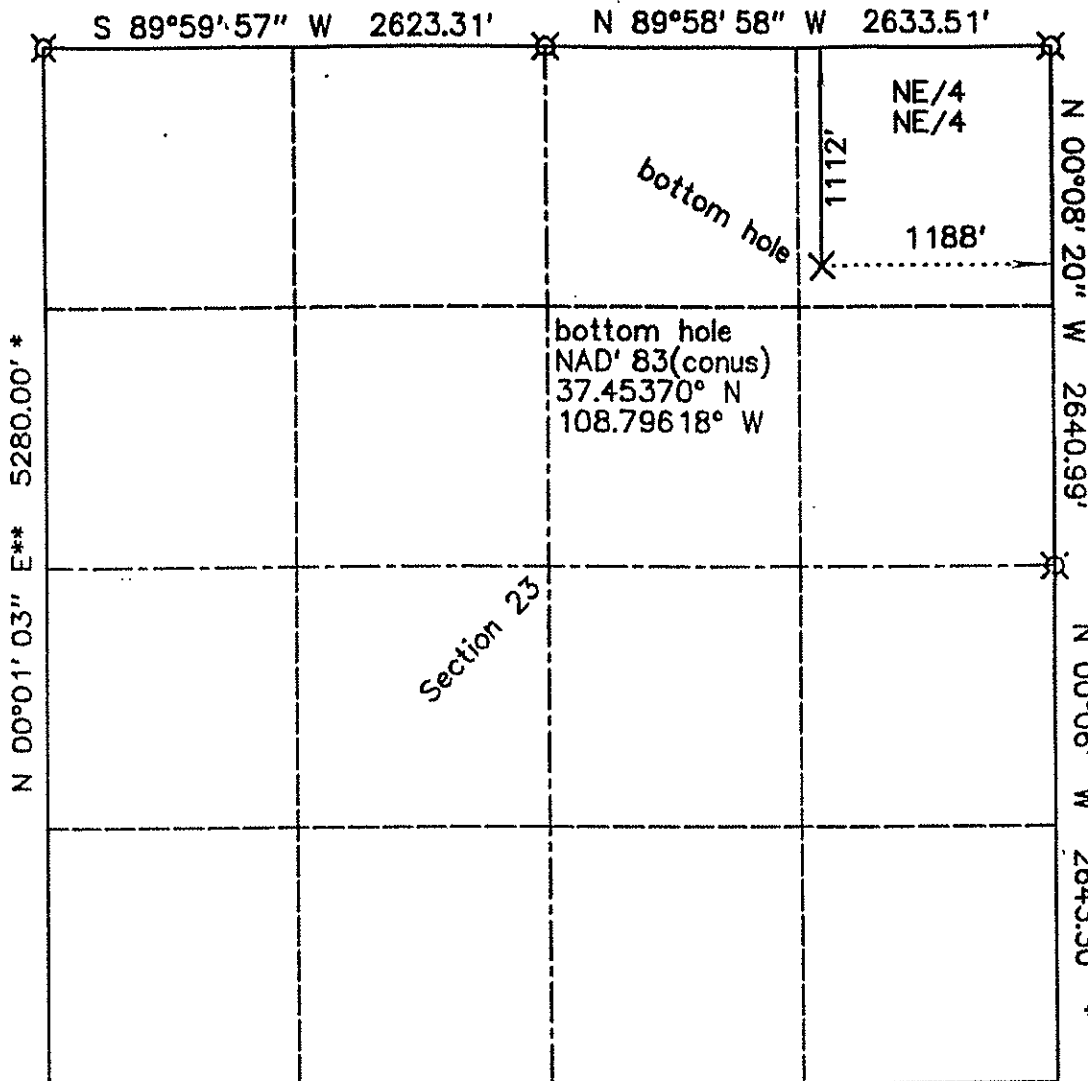
KINDER MORGAN CO2 COMPANY, LP  
YB - 6  
1111' FNL & 812' FWL  
Section 24, T.37 N., R.18 W., NMPM  
Montezuma County, CO  
6596.0' grd. el. NAVD '88 (from OPUS)

- Notes:
- 1) Distances/dimensions are perpendicular to section/aliquot lines.
  - 2) Surface use is Fee dryland agriculture.
  - 3) GPS was corrected with OPUS, operator was R.J. Caffey, CO LS 36562
  - 4) There are no improvements except fences.

date of survey : 10/27/2011  
date of plat : 11/06/2011

KNOW ALL MEN BY THESE PRESENTS that I, GERALD G. HUDDLESTON, do hereby certify that this plat was prepared from field notes of an actual survey made by me or under my supervision and that the same is true and accurate to the best of my knowledge and belief.





Scale: 1" = 1000'  
Basis of bearing is assumed from GPS True North as shown.

- ⊗ standard GLO/BLM monument
- set standard monument
- standard corner as labeled

\* from GLO/BLM  
\*\* calculated

N 89°56'43" W \*\* 5269.44' \*

KINDER MORGAN CO2 COMPANY, LP  
YB - 6  
1112' FNL & 1188' FEL  
Section 23, T.37 N., R.18 W., NMPM  
Montezuma County, CO

Notes:  
1) Distances/dimensions are perpendicular to section/aliquot lines.

date of survey : 10/27/2011  
date of plat : 11/06/2011

KNOW ALL MEN BY THESE PRESENTS that I, GERALD G. HUDDLESTON, do hereby certify that this plat was prepared from field notes of an actual survey made by me or under my supervision and that the same is true and accurate to the best of my knowledge and belief.

