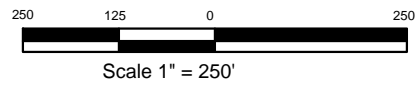


Visible Improvements		
Item	Description	Distance/Direction
A	Fenceline	198' North
B	Lease Road	281' North
C	O&G Well	575' SSW



Drawing Title: **Location Drawing**

Drawing Date: 01/31/2012	Well/Location Name: <b>State Pronghorn 41-44-16HZ</b>	Surface Location: NENE Sec 16, T5N, R61W, 6th PM, Weld County, CO Lat. 40.40775 Long. -104.20674 200' FNL 698' FEL
Drawn By: ksc		