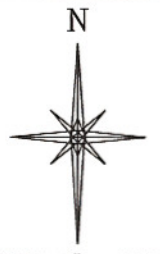
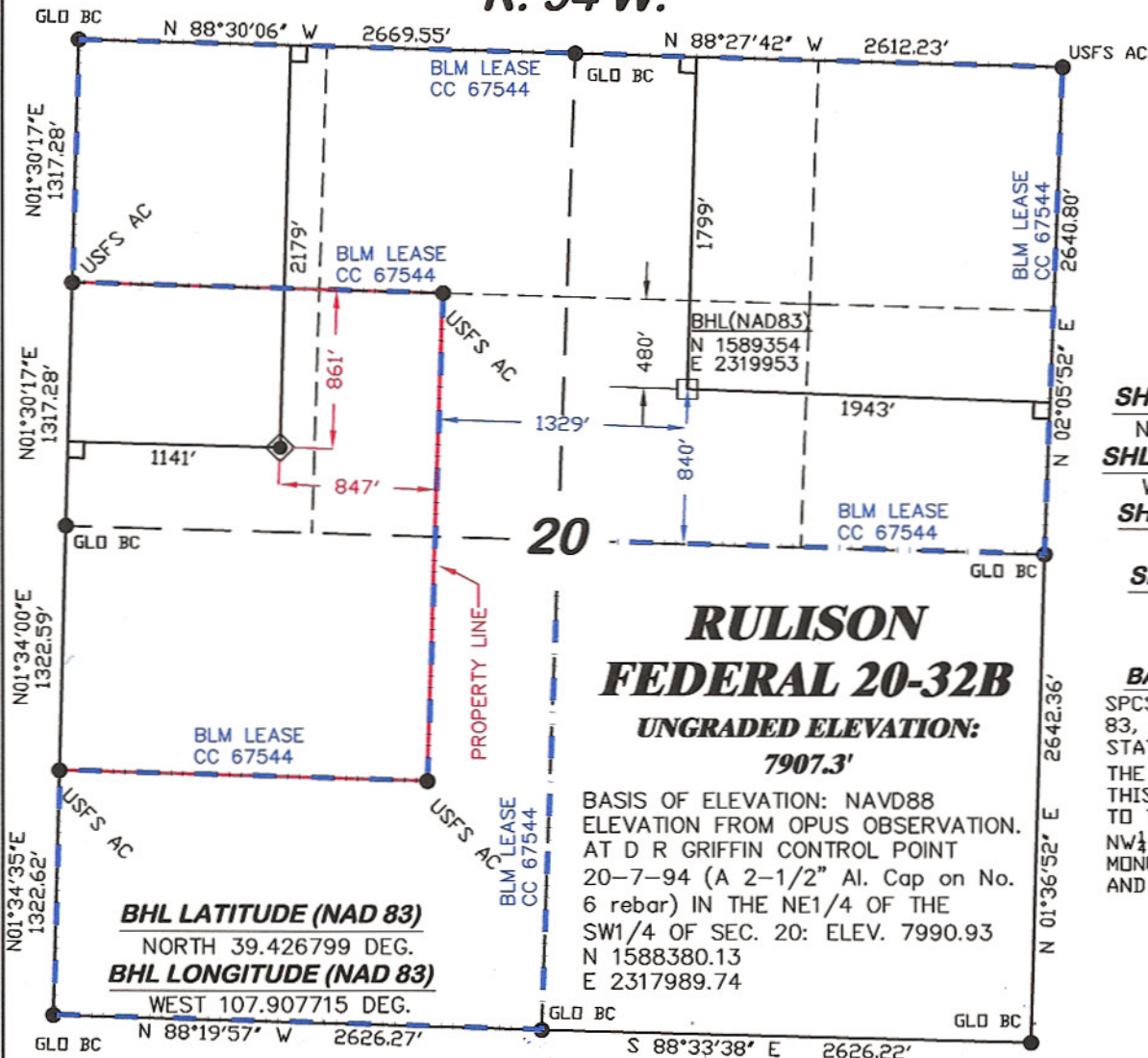


**R. 94 W.**



SCALE: 1" = 1000'  
**T. 7 S.**

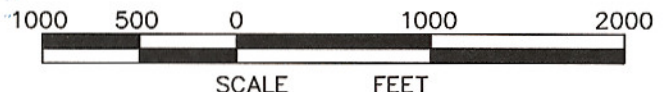
**SHL LATITUDE (NAD 83)**  
NORTH 39.425755 DEG.  
**SHL LONGITUDE (NAD 83)**  
WEST 107.915428 DEG.  
**SHL NORTHING (NAD83)**  
1589031.35  
**SHL EASTING (NAD83)**  
2317765.14

**BASIS OF BEARING**  
SPCS CO CENTRAL NAD 83, BASED ON NGS TRIG. STATION "FABER"  
FOR THE BASIS OF BEARINGS FOR THIS SURVEY IS REFERENCED TO THE NORTH LINE OF THE NW 1/4 OF SECTION 20, BEING MONUMENTED WITH GLO BC'S AND BEARING N 88° 30' 06" W.

- LEGEND**
- ◆ WELL LOCATION
  - FOUND MONUMENT
  - L DENOTES 90° TIE
  - BHL LOCATION

**RULISON  
FEDERAL 20-32B**  
**UNGRADED ELEVATION:  
7907.3'**

BASIS OF ELEVATION: NAVD88  
ELEVATION FROM OPUS OBSERVATION.  
AT D R GRIFFIN CONTROL POINT  
20-7-94 (A 2-1/2" Al. Cap on No.  
6 rebar) IN THE NE 1/4 OF THE  
SW 1/4 OF SEC. 20: ELEV. 7990.93  
N 1588380.13  
E 2317989.74



**SURVEYOR'S STATEMENT**

I, Ronald C. Rennke, an employee and agent on behalf of D.R. GRIFFIN & ASSOCIATES, INC. state the plat hereon is a correct representation of a survey made under my supervision on September 18, 2008 of the shown RULISON FEDERAL 20-32B staked on the ground as shown hereon.

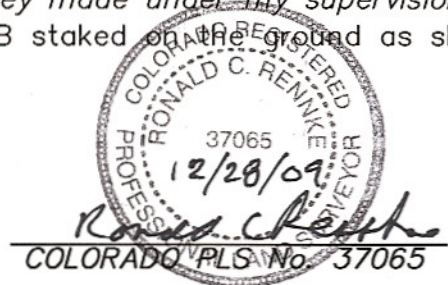
**NOTES**

GPS OPERATOR RICHARD BULLEN  
OBSERVED A PDOP OF 2.5.

ALL GPS OBSERVATIONS ARE IN  
COMPLIANCE WITH COGCC RULE NO. 215.

HIGH PLATEAU DESERT  
2-TRACK ROAD WITHIN 400' RADIUS  
OF WELL SITE SEE EXHIBIT 1B.

SURFACE USE IS NATIVE WOODS, NON-CROP & RANGELAND.



**20F PAD**



**RIFFIN & ASSOCIATES, INC.**  
(307) 362-5028 1414 ELK ST., ROCK SPRINGS, WY 82901

**PLAT OF DRILLING LOCATION IN THE  
SW 1/4 OF NW 1/4 OF SECTION 20  
FOR NOBLE ENERGY, INC.**

**DATE DRAWN: 9/22/08-RAB**

**SCALE: 1" = 1000'**

**REVISED: 12/15/09 - DEH**

**JOB No. 15455**

**CHANGE DATUM NAD83**

**EXHIBIT 1**

**2179' F/NL & 1141' F/WL, SECTION 20,  
T. 7 S., R. 94 W., 6th P.M.  
GARFIELD COUNTY, COLORADO**