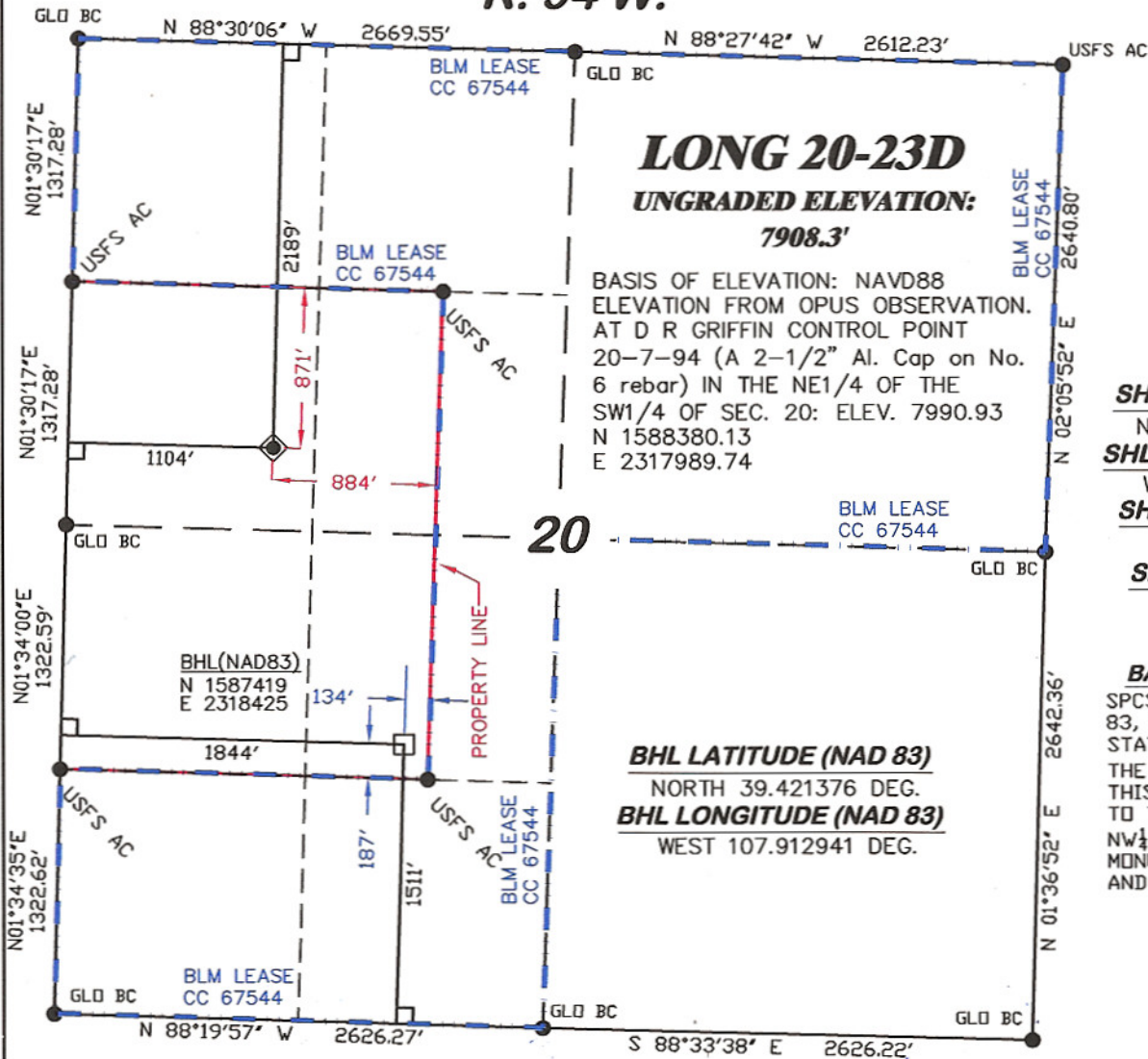


R. 94 W.



LONG 20-23D
UNGRADED ELEVATION:
7908.3'

BASIS OF ELEVATION: NAVD88
 ELEVATION FROM OPUS OBSERVATION.
 AT D R GRIFFIN CONTROL POINT
 20-7-94 (A 2-1/2" Al. Cap on No.
 6 rebar) IN THE NE1/4 OF THE
 SW1/4 OF SEC. 20: ELEV. 7990.93
 N 1588380.13
 E 2317989.74

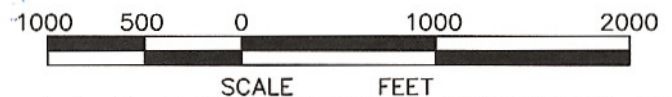
SHL LATITUDE (NAD 83)
 NORTH 39.425726 DEG.
SHL LONGITUDE (NAD 83)
 WEST 107.915560 DEG.
SHL NORTHING (NAD83)
 1589021.85
SHL EASTING (NAD83)
 2317727.64

BASIS OF BEARING
 SPCS CO CENTRAL NAD
 83, BASED ON NGS TRIG.
 STATION "FABER"
 THE BASIS OF BEARINGS FOR
 THIS SURVEY IS REFERENCED
 TO THE NORTH LINE OF THE
 NW1/4 OF SECTION 20, BEING
 MONUMENTED WITH GLO BC'S
 AND BEARING N 88° 30' 06" W.

BHL LATITUDE (NAD 83)
 NORTH 39.421376 DEG.
BHL LONGITUDE (NAD 83)
 WEST 107.912941 DEG.

LEGEND

- ◆ WELL LOCATION
- FOUND MONUMENT
- L DENOTES 90° TIE
- BHL LOCATION

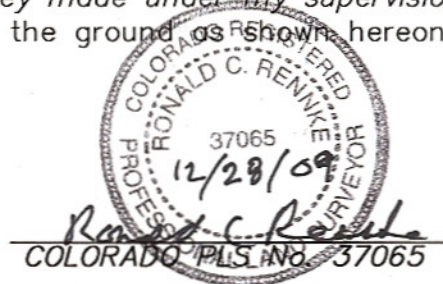


SURVEYOR'S STATEMENT

I, Ronald C. Rennke, an employee and agent on behalf of D.R. GRIFFIN & ASSOCIATES, INC. state the plat hereon is a correct representation of a survey made under my supervision on September 18, 2008 of the shown LONG 20-23D staked on the ground as shown hereon.

NOTES

GPS OPERATOR RICHARD BULLEN
 OBSERVED A PDOP OF 2.5.
 ALL GPS OBSERVATIONS ARE IN
 COMPLIANCE WITH COGCC RULE NO. 215.
 HIGH PLATEAU DESERT
 2-TRACK ROAD WITHIN 400' RADIUS
 OF WELL SITE SEE EXHIBIT 1B.
 SURFACE USE IS NATIVE WOODS, NON-CROP & RANGELAND.



20F PAD

DRG **RIFFIN & ASSOCIATES, INC.**
 (307) 362-5028 1414 ELK ST., ROCK SPRINGS, WY 82901

PLAT OF DRILLING LOCATION IN THE
SW 1/4 OF NW 1/4 OF SECTION 20
FOR NOBLE ENERGY, INC.

DATE DRAWN: 9/22/08-RAB	SCALE: 1" = 1000'
REVISED: 12/15/09 - DEH	JOB No. 15455
CHANGE DATUM NAD83	EXHIBIT 1

2189' F/NL & 1104' F/WL, SECTION 20,
T. 7 S., R. 94 W., 6th P.M.
GARFIELD COUNTY, COLORADO