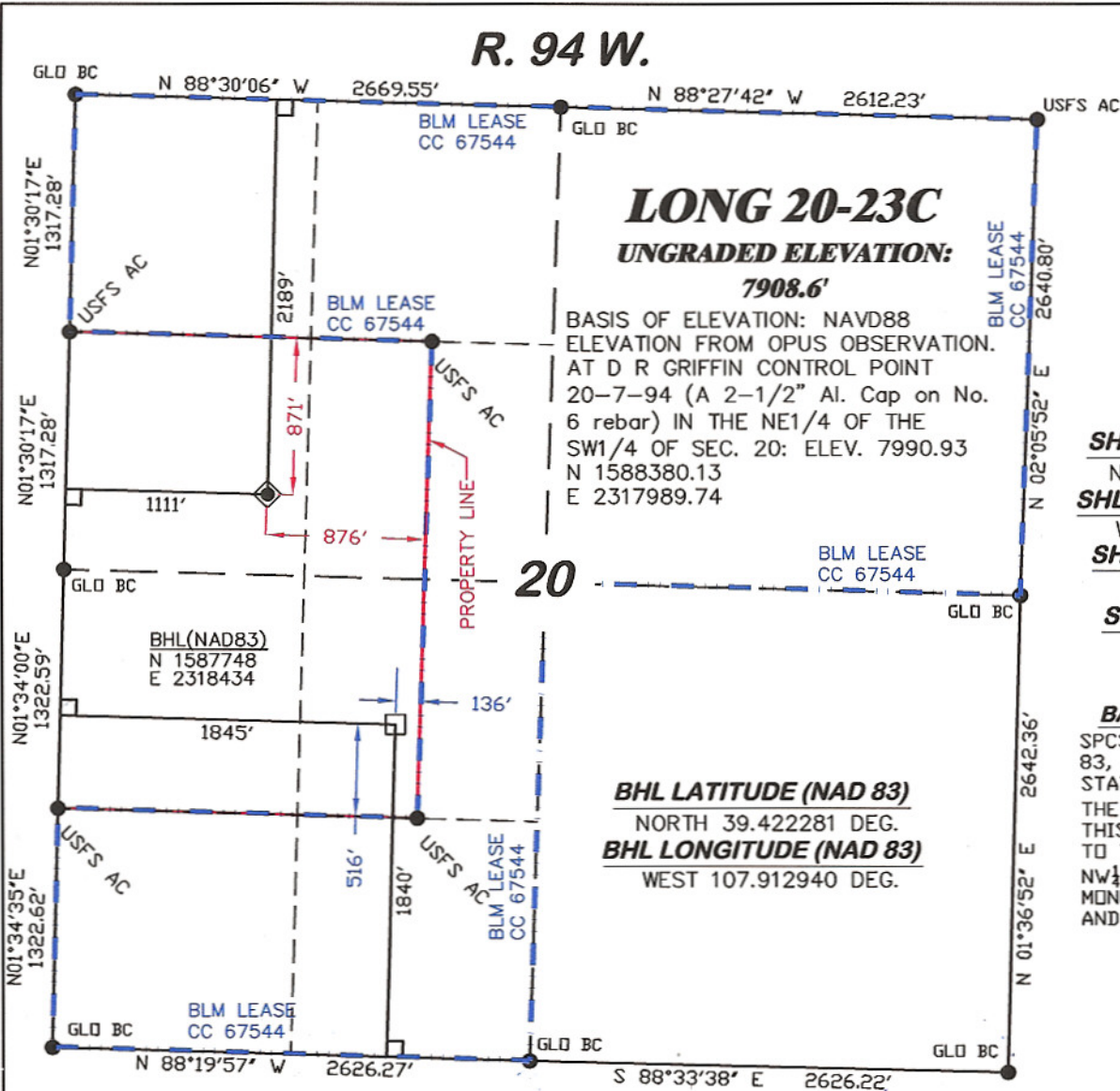


R. 94 W.



SURVEYOR'S STATEMENT

I, Ronald C. Rennke, an employee and agent on behalf of D.R. GRIFFIN & ASSOCIATES, INC. state the plat hereon is a correct representation of a survey made under my supervision on September 18, 2008 of the shown LONG 20-23C staked on the ground as shown hereon.

NOTES

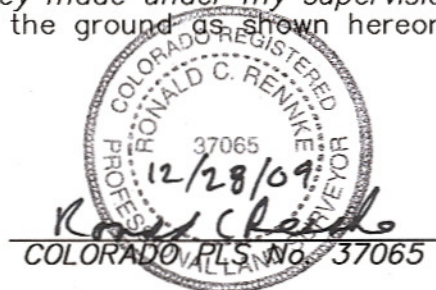
GPS OPERATOR RICHARD BULLEN
OBSERVED A PDOP OF 2.5.

ALL GPS OBSERVATIONS ARE IN
COMPLIANCE WITH COGCC RULE NO. 215.

HIGH PLATEAU DESERT

2-TRACK ROAD WITHIN 400' RADIUS
OF WELL SITE SEE EXHIBIT 1B.

SURFACE USE IS NATIVE WOODS, NON-CROP & RANGELAND.



DRG
RIFFIN & ASSOCIATES, INC.
(307) 362-5028 1414 ELK ST., ROCK SPRINGS, WY 82901

**PLAT OF DRILLING LOCATION IN THE
SW 1/4 OF NW 1/4 OF SECTION 20
FOR NOBLE ENERGY, INC.**

DATE DRAWN: 9/22/08-RAB

SCALE: 1" = 1000'

REVISED: 12/15/09 - DEH

JOB No. 15455

CHANGE DATUM NAD83

EXHIBIT 1

**2189' F/NL & 1111' F/WL, SECTION 20,
T. 7 S., R. 94 W., 6th P.M.
GARFIELD COUNTY, COLORADO**