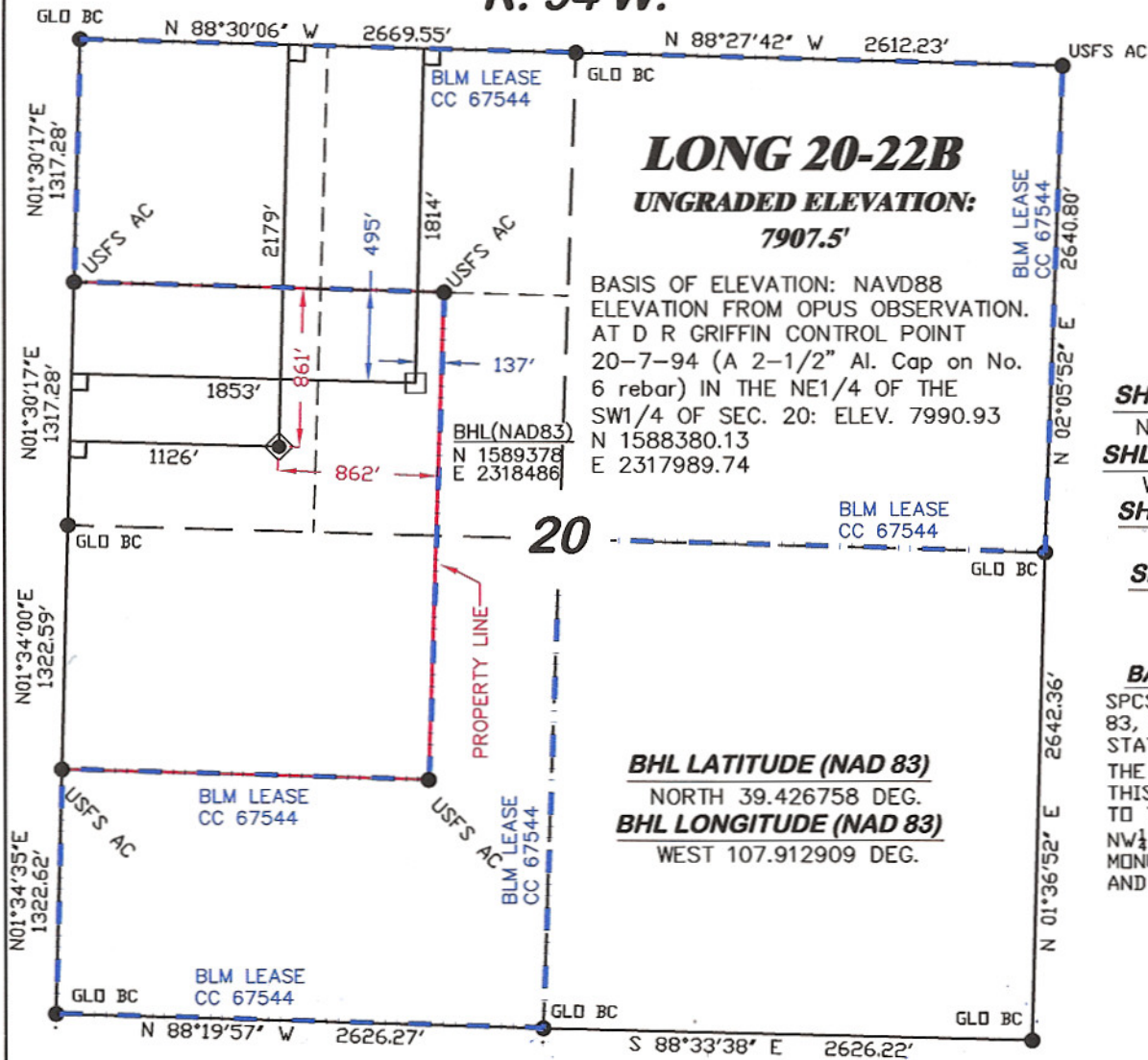


R. 94 W.



SCALE: 1" = 1000'
T. 7 S.

SHL LATITUDE (NAD 83)
NORTH 39.425754 DEG.
SHL LONGITUDE (NAD 83)
WEST 107.915481 DEG.
SHL NORTHING (NAD83)
1589031.35
SHL EASTING (NAD83)
2317750.14

BASIS OF BEARING
SPCS CO CENTRAL NAD 83, BASED ON NGS TRIG. STATION "FABER"
THE BASIS OF BEARINGS FOR THIS SURVEY IS REFERENCED TO THE NORTH LINE OF THE NW 1/4 OF SECTION 20, BEING MONUMENTED WITH GLO BC'S AND BEARING N 88° 30' 06" W.

BHL LATITUDE (NAD 83)
NORTH 39.426758 DEG.
BHL LONGITUDE (NAD 83)
WEST 107.912909 DEG.

LEGEND

- ◆ WELL LOCATION
- FOUND MONUMENT
- L DENOTES 90° TIE
- BHL LOCATION



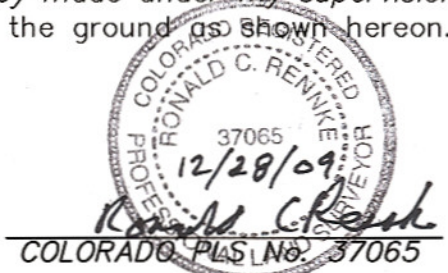
SURVEYOR'S STATEMENT


I, Ronald C. Rennke, an employee and agent on behalf of D.R. GRIFFIN & ASSOCIATES, INC. state the plat hereon is a correct representation of a survey made under my supervision on September 18, 2008 of the shown LONG 20-22B staked on the ground as shown hereon.

NOTES

- GPS OPERATOR RICHARD BULLEN OBSERVED A PDOP OF 2.5.
- ALL GPS OBSERVATIONS ARE IN COMPLIANCE WITH COGCC RULE NO. 215.
- HIGH PLATEAU DESERT
- 2-TRACK ROAD WITHIN 400' RADIUS OF WELL SITE SEE EXHIBIT 1B.
- SURFACE USE IS NATIVE WOODS, NON-CROP & RANGELAND.

20F PAD



 RIFFIN & ASSOCIATES, INC. (307) 362-5028 1414 ELK ST., ROCK SPRINGS, WY 82901	PLAT OF DRILLING LOCATION IN THE SW 1/4 OF NW 1/4 OF SECTION 20 FOR NOBLE ENERGY, INC.						
<table border="1"> <tr> <td>DATE DRAWN: 9/22/08-RAB</td><td>SCALE: 1" = 1000'</td></tr> <tr> <td>REVISED: 12/15/09 - DEH</td><td>JOB No. 15455</td></tr> <tr> <td>CHANGE DATUM NAD83</td><td>EXHIBIT 1</td></tr> </table>	DATE DRAWN: 9/22/08-RAB	SCALE: 1" = 1000'	REVISED: 12/15/09 - DEH	JOB No. 15455	CHANGE DATUM NAD83	EXHIBIT 1	2179' F/NL & 1126' F/WL, SECTION 20, T. 7 S., R. 94 W., 6th P.M. GARFIELD COUNTY, COLORADO
DATE DRAWN: 9/22/08-RAB	SCALE: 1" = 1000'						
REVISED: 12/15/09 - DEH	JOB No. 15455						
CHANGE DATUM NAD83	EXHIBIT 1						