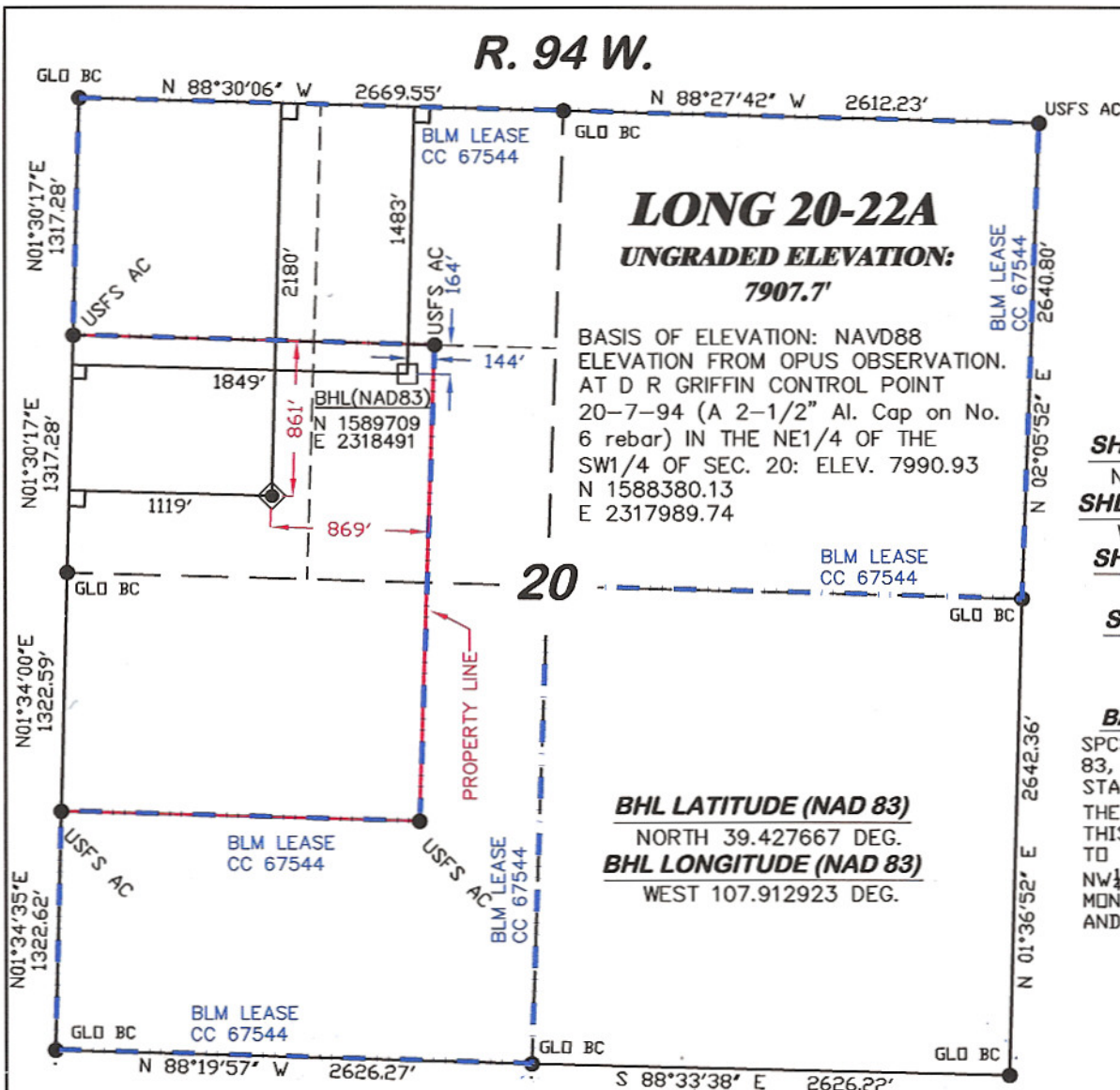


**R. 94 W.**



SCALE: 1" = 1000'  
**T. 7 S.**

**SHL LATITUDE (NAD 83)**  
NORTH 39.425754 DEG.  
**SHL LONGITUDE (NAD 83)**  
WEST 107.915508 DEG.  
**SHL NORTHING (NAD83)**  
1589031.35  
**SHL EASTING (NAD83)**  
2317742.64

**BASIS OF BEARING**  
SPCS CO CENTRAL NAD 83, BASED ON NGS TRIG. STATION "FABER"  
THE BASIS OF BEARINGS FOR THIS SURVEY IS REFERENCED TO THE NORTH LINE OF THE NW 1/4 OF SECTION 20, BEING MONUMENTED WITH GLO BC'S AND BEARING N 88° 30' 06" W.

**BHL LATITUDE (NAD 83)**  
NORTH 39.427667 DEG.  
**BHL LONGITUDE (NAD 83)**  
WEST 107.912923 DEG.

**LEGEND**

- ◆ WELL LOCATION
- FOUND MONUMENT
- L DENOTES 90° TIE
- BHL LOCATION



**SURVEYOR'S STATEMENT**

I, Ronald C. Rennke, an employee and agent on behalf of D.R. GRIFFIN & ASSOCIATES, INC. state the plat hereon is a correct representation of a survey made under my supervision on September 18, 2008 of the shown LONG 20-22A staked on the ground as shown hereon.

**NOTES**

GPS OPERATOR RICHARD BULLEN  
OBSERVED A PDOP OF 2.5.

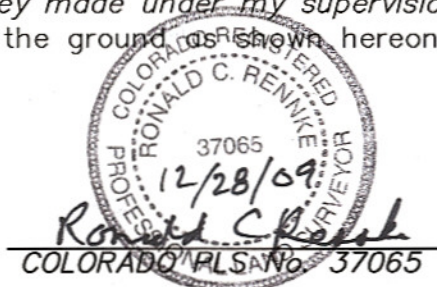
ALL GPS OBSERVATIONS ARE IN COMPLIANCE WITH COGCC RULE NO. 215.

HIGH PLATEAU DESERT

2-TRACK ROAD WITHIN 400' RADIUS OF WELL SITE SEE EXHIBIT 1B.

SURFACE USE IS NATIVE WOODS, NON-CROP & RANGELAND.

**20F PAD**



**RIFFIN & ASSOCIATES, INC.**  
(307) 362-5028 1414 ELK ST., ROCK SPRINGS, WY 82901

**PLAT OF DRILLING LOCATION IN THE  
SW 1/4 OF NW 1/4 OF SECTION 20  
FOR NOBLE ENERGY, INC.**

DATE DRAWN: 9/22/08-RAB

SCALE: 1" = 1000'

REVISED: 12/15/09 - DEH

JOB No. 15455

CHANGE DATUM NAD83

EXHIBIT 1

**2180' F/NL & 1119' F/WL, SECTION 20,  
T. 7 S., R. 94 W., 6th P.M.  
GARFIELD COUNTY, COLORADO**