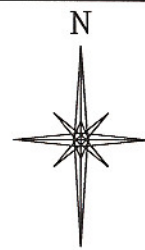
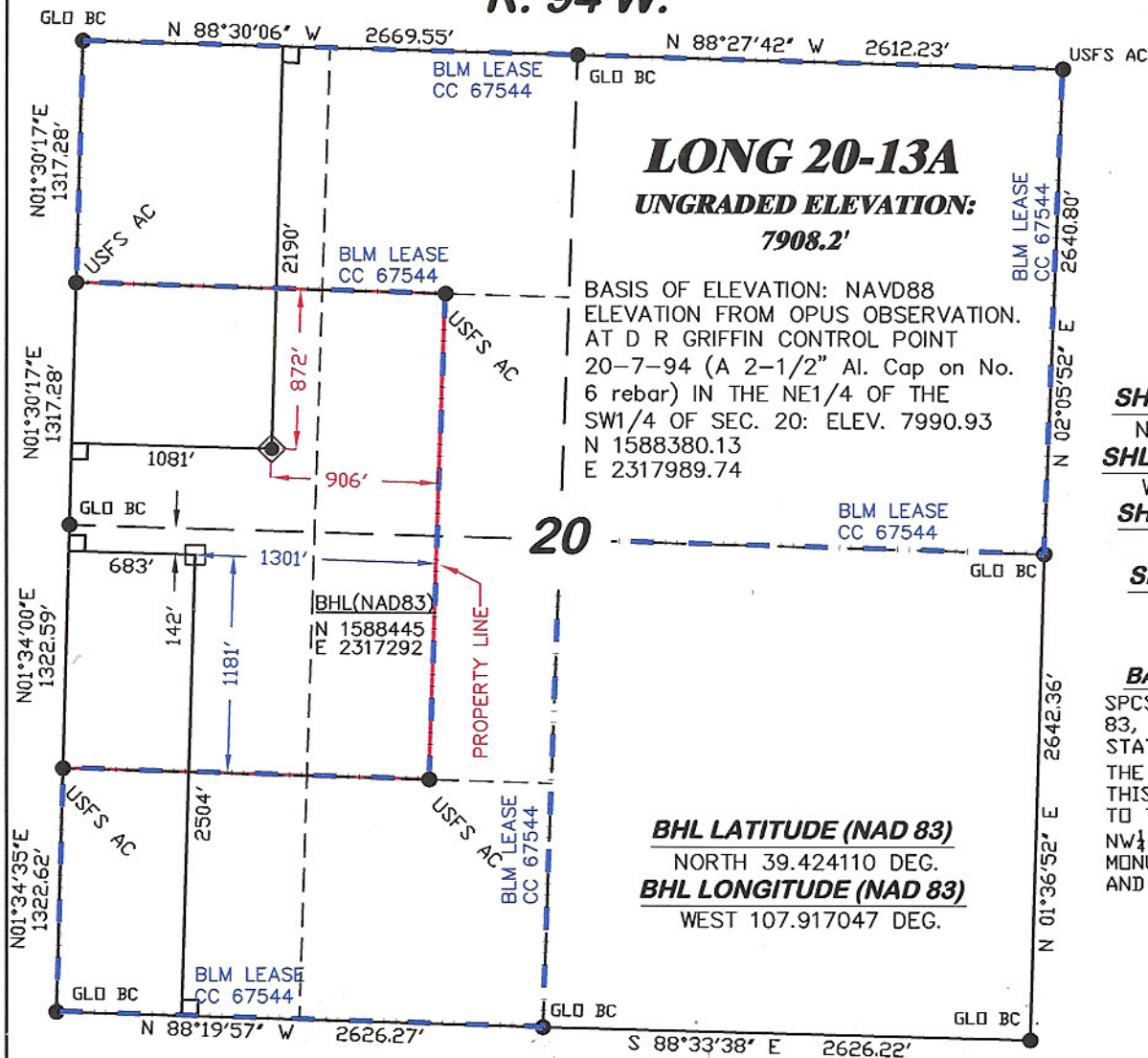


**R. 94 W.**



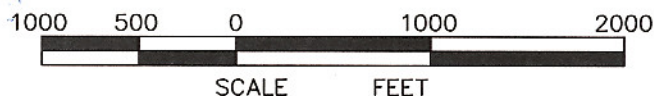
SCALE: 1" = 1000'  
**T. 7 S.**

**SHL LATITUDE (NAD 83)**  
 NORTH 39.425725 DEG.  
**SHL LONGITUDE (NAD 83)**  
 WEST 107.915640 DEG.  
**SHL NORTHING (NAD83)**  
 1589021.85  
**SHL EASTING (NAD83)**  
 2317705.14

**BASIS OF BEARING**  
 SPCS CO CENTRAL NAD  
 83, BASED ON NGS TRIG.  
 STATION 'FABER'  
 THE BASIS OF BEARINGS FOR  
 THIS SURVEY IS REFERENCED  
 TO THE NORTH LINE OF THE  
 NW1/4 OF SECTION 20, BEING  
 MONUMENTED WITH GLO BC'S  
 AND BEARING N 88° 30' 06" W.

**LEGEND**

- ◆ WELL LOCATION
- FOUND MONUMENT
- L DENOTES 90° TIE
- BHL LOCATION



**SURVEYOR'S STATEMENT**

I, Ronald C. Rennke, an employee and agent on behalf of D.R. GRIFFIN & ASSOCIATES, INC. state the plat hereon is a correct representation of a survey made under my supervision on September 18, 2008 of the shown LONG 20-13A staked on the ground as shown hereon.

**NOTES**

GPS OPERATOR RICHARD BULLEN  
 OBSERVED A PDOP OF 2.5.

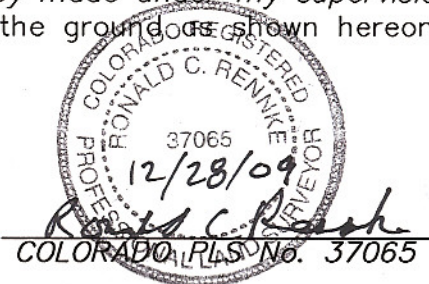
ALL GPS OBSERVATIONS ARE IN  
 COMPLIANCE WITH COGCC RULE NO. 215.

HIGH PLATEAU DESERT

2-TRACK ROAD WITHIN 400' RADIUS  
 OF WELL SITE SEE EXHIBIT 1B.

SURFACE USE IS NATIVE WOODS, NON-CROP & RANGELAND.

**20F PAD**



**DR GRIFFIN & ASSOCIATES, INC.**  
 (307) 362-5028 1414 ELK ST., ROCK SPRINGS, WY 82901

**PLAT OF DRILLING LOCATION IN THE  
 SW 1/4 OF NW 1/4 OF SECTION 20  
 FOR NOBLE ENERGY, INC.**

**DATE DRAWN: 9/22/08-RAB**

**SCALE: 1" = 1000'**

**REVISED: 12/15/09 - DEH**

**JOB No. 15455**

**CHANGE DATUM NAD83**

**EXHIBIT 1**

**2190' F/NL & 1081' F/WL, SECTION 20,  
 T. 7 S., R. 94 W., 6th P.M.  
 GARFIELD COUNTY, COLORADO**