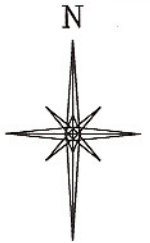
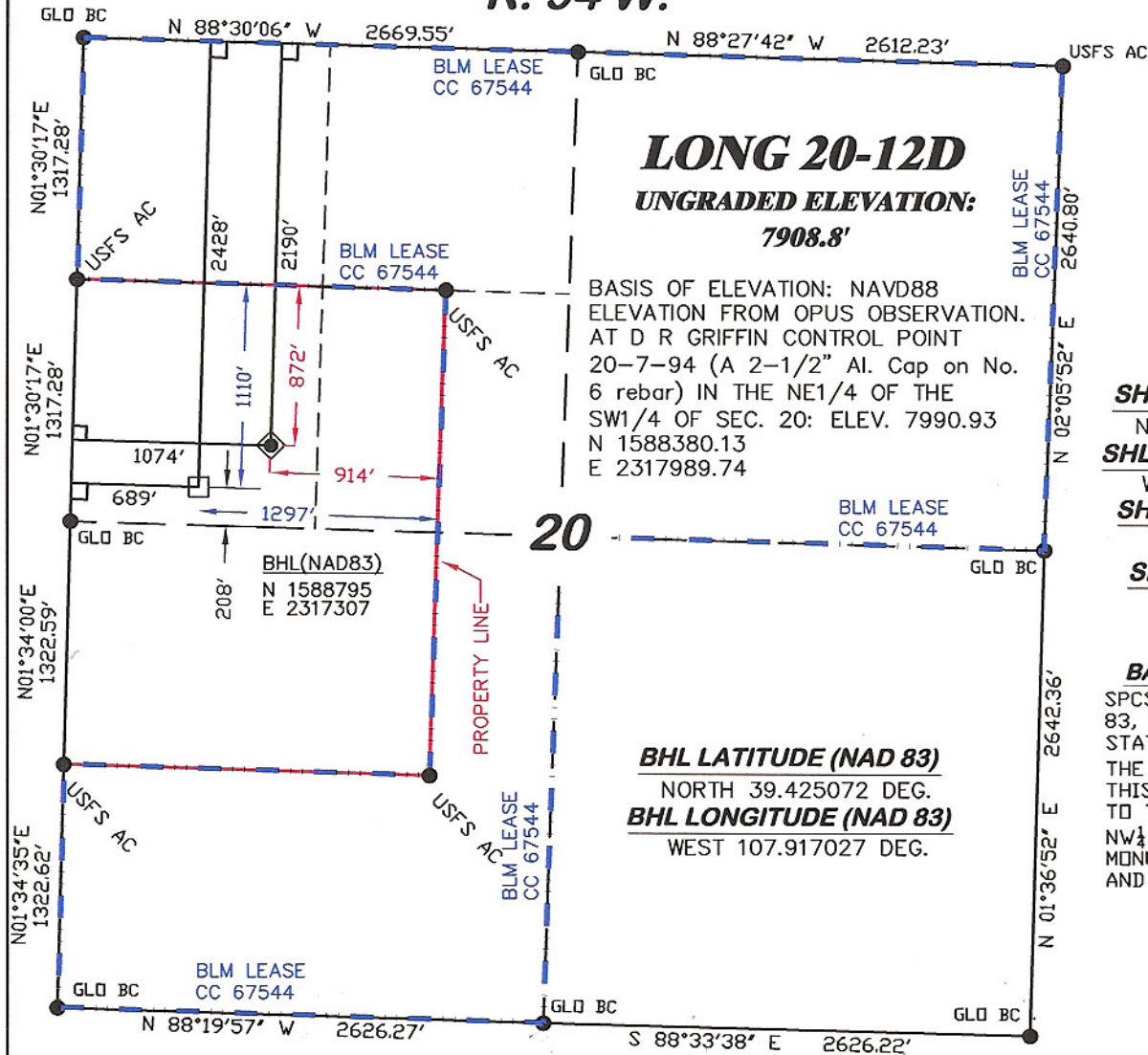


R. 94 W.



SCALE: 1" = 1000'
T. 7 S.

LONG 20-12D
UNGRADED ELEVATION:
7908.8'

BASIS OF ELEVATION: NAVD88
ELEVATION FROM OPUS OBSERVATION.
AT D R GRIFFIN CONTROL POINT
20-7-94 (A 2-1/2" Al. Cap on No.
6 rebar) IN THE NE1/4 OF THE
SW1/4 OF SEC. 20: ELEV. 7990.93
N 1588380.13
E 2317989.74

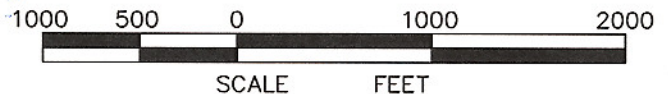
SHL LATITUDE (NAD 83)
NORTH 39.425724 DEG.
SHL LONGITUDE (NAD 83)
WEST 107.915666 DEG.
SHL NORTHING (NAD83)
1589021.85
SHL EASTING (NAD83)
2317697.64

BASIS OF BEARING
SPCS CO CENTRAL NAD
83, BASED ON NGS TRIG.
STATION "FABER"
THE BASIS OF BEARINGS FOR
THIS SURVEY IS REFERENCED
TO THE NORTH LINE OF THE
NW1/4 OF SECTION 20, BEING
MONUMENTED WITH GLO BC'S
AND BEARING N 88° 30' 06" W.

BHL LATITUDE (NAD 83)
NORTH 39.425072 DEG.
BHL LONGITUDE (NAD 83)
WEST 107.917027 DEG.

LEGEND

- ◆ WELL LOCATION
- FOUND MONUMENT
- L DENOTES 90° TIE
- BHL LOCATION



SURVEYOR'S STATEMENT

I, Ronald C. Rennke, an employee and agent on behalf of D.R. GRIFFIN & ASSOCIATES, INC. state the plat hereon is a correct representation of a survey made under my supervision on September 18, 2008 of the shown LONG 20-12D staked on the ground as shown hereon.

NOTES

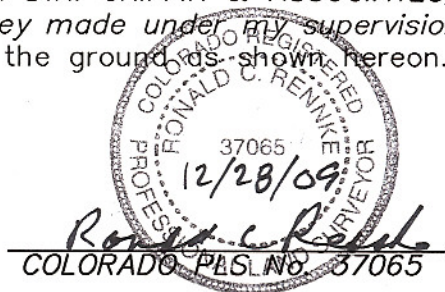
GPS OPERATOR RICHARD BULLEN
OBSERVED A PDOP OF 2.5.

ALL GPS OBSERVATIONS ARE IN
COMPLIANCE WITH COGCC RULE NO. 215.
COMPLIANCE WITH COGCC RULE NO. 215.
HIGH PLATEAU DESERT

2-TRACK ROAD WITHIN 400' RADIUS
OF WELL SITE SEE EXHIBIT 1B.

SURFACE USE IS NATIVE WOODS, NON-CROP & RANGELAND.

20F PAD



DRG **RIFFIN & ASSOCIATES, INC.**
(307) 362-6028 1414 ELK ST., ROCK SPRINGS, WY 82901

**PLAT OF DRILLING LOCATION IN THE
SW 1/4 OF NW 1/4 OF SECTION 20
FOR NOBLE ENERGY, INC.**

DATE DRAWN: 9/22/08-RAB **SCALE: 1" = 1000'**
REVISED: 12/15/09 - DEH **JOB No. 15455**
CHANGE DATUM NAD83 **EXHIBIT 1**

**2190' F/NL & 1074' F/WL, SECTION 20,
T. 7 S., R. 94 W., 6th P.M.
GARFIELD COUNTY, COLORADO**