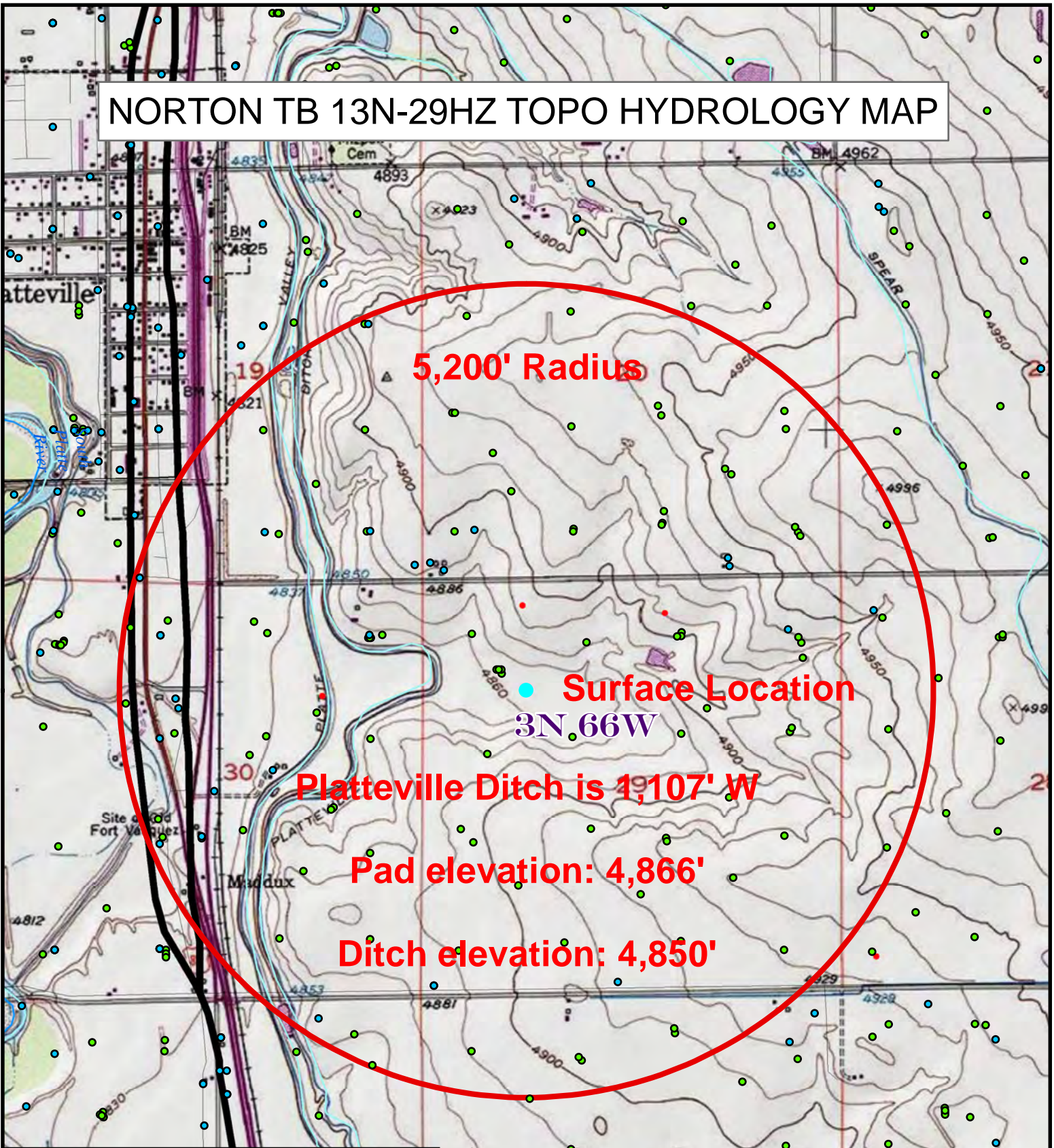


# NORTON TB 13N-29HZ TOPO HYDROLOGY MAP



**5,200' Radius**

**Surface Location**  
3N, 66W

**Platteville Ditch is 1,107' W**

**Pad elevation: 4,866'**

**Ditch elevation: 4,850'**

**Legend**

Water Wells	Water
WELLS	Road - Local
Norton TB 13N-29HZ Buffer	Road - Primary
Townships - Rockies (Premier/GCDB)	Road - Secondary
Sections - Rockies (Premier/GCDB)	Road - Interstates
Rivers	Road - Trails
Ponds	Road - Interchanges
Lakes	NGS USA Topographic Maps

