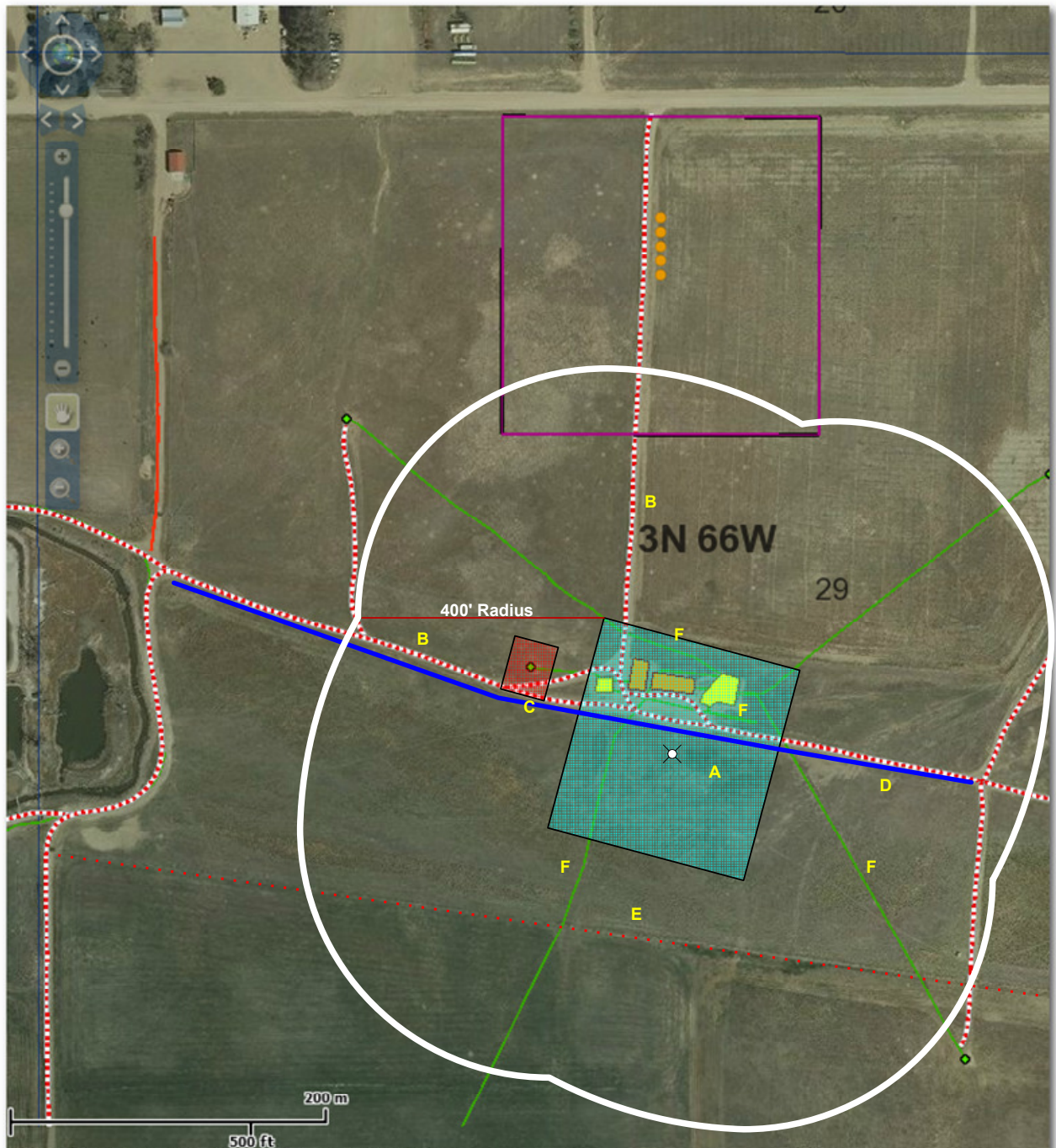


ACCESS ROAD



DESCRIPTION

- A. Facility Enclosure
- B. Proposed Access Road
- C. UPRR 22 PAN AM "O" True # 1 is located 383' Northwest of the control point (Center of Pad)
- D. KMG Gathering Line is located 95" North of control point (Center of Pad)
- E. Fence is located 348' South of control point (Center of Pad)
- F. Flow lines are located 155' West, 232' East, 126' North and 233' North of control point (Center of Pad)



Legend:

- Center of the Pad
- KMG Gathering Lines
- Existing Well Location
- Proposed Facility Enclosure
- Access Road
- Fence
- Power Lines



Center of Pad
 1,481' FNL, 1340' FWL
 Latitude: 40.199185°
 Longitude: -104.805799°
 Elevation: 4866'

Date: 12/11/2011
 PDOP: 6

400 ft. Radius Map Norton 13N-29HZ Pad Tank Battery

Surface Location:
T3N R66W 29, SWNW
Description of surface Uses :Dryland Crop