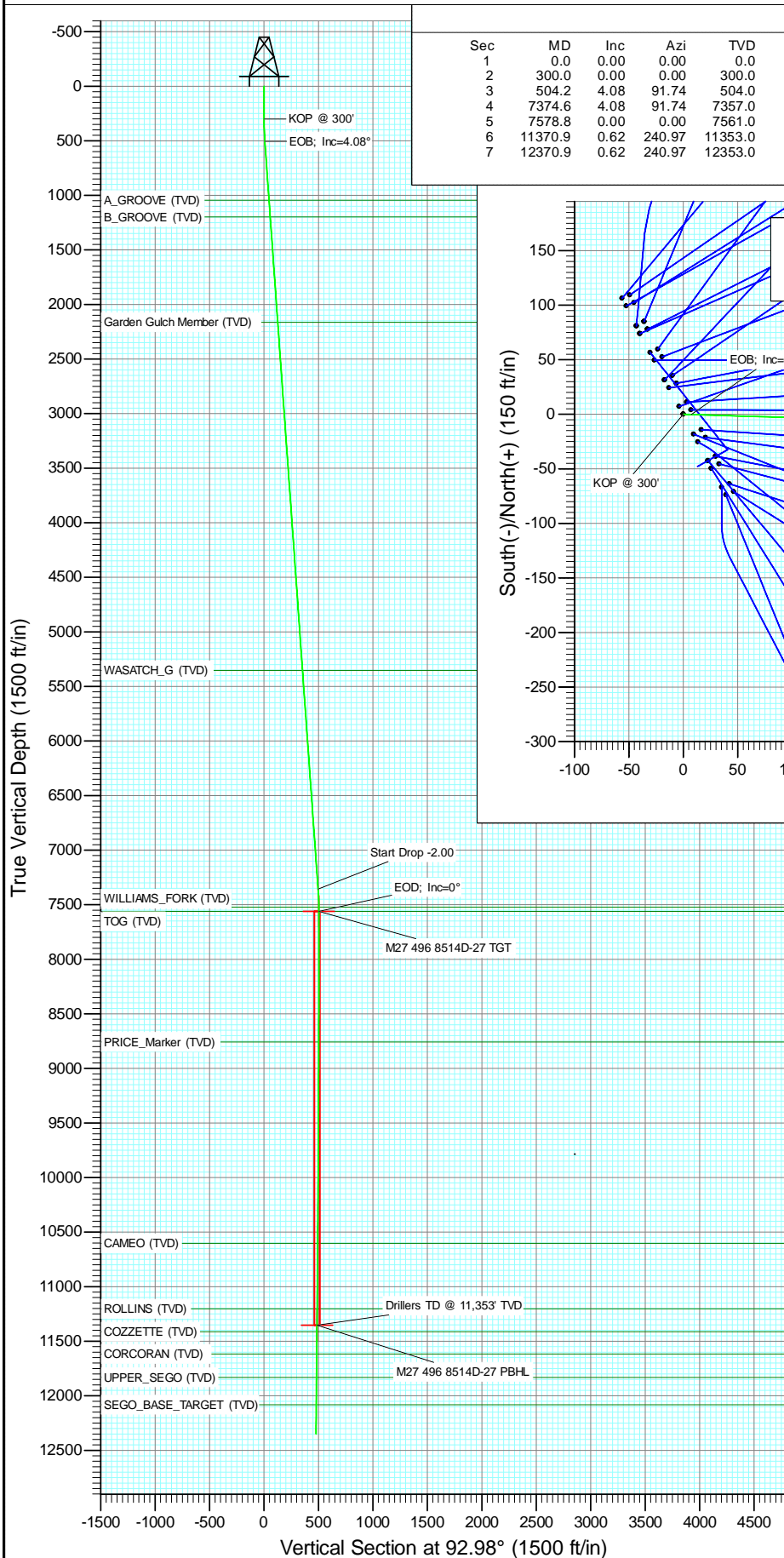
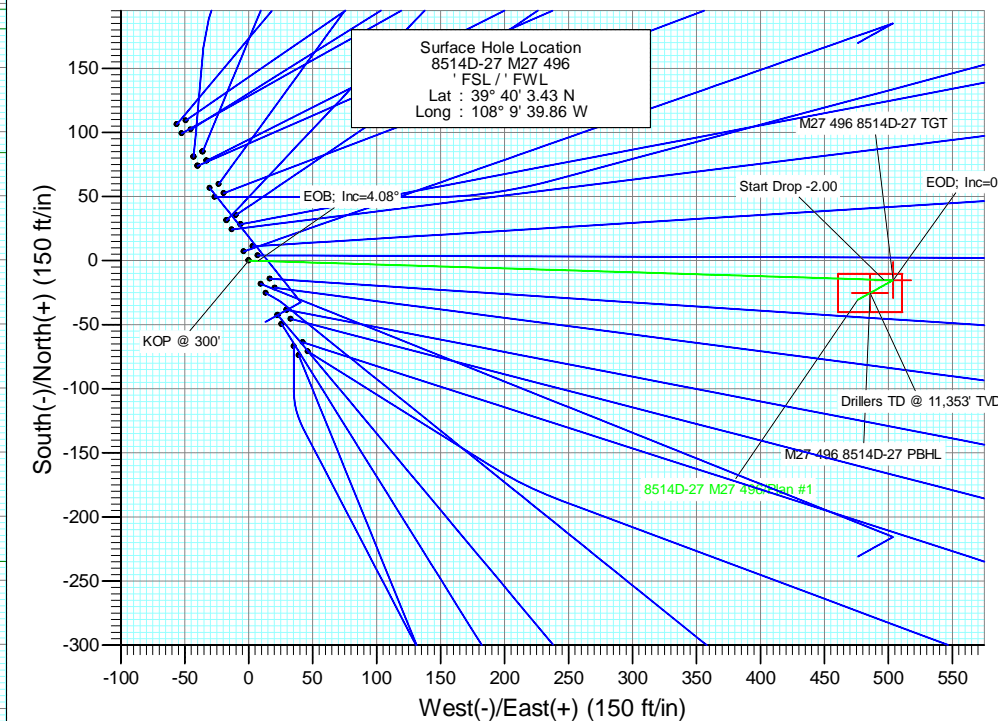




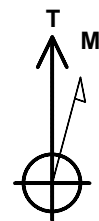
Project: Story Gulch  
Site: S27-T4S-R96W (M27 496)  
Well: 8514D-27 M27 496  
Wellbore: DD  
Design: Plan #1



SECTION DETAILS										
Sec	MD	Inc	Azi	TVD	+N/-S	+E/-W	Dleg	TFace	VSect	Target
1	0.0	0.00	0.00	0.0	0.0	0.0	0.00	0.00	0.0	
2	300.0	0.00	0.00	300.0	0.0	0.0	0.00	0.00	0.0	
3	504.2	4.08	91.74	504.0	-0.2	7.3	2.00	91.74	7.3	
4	7374.6	4.08	91.74	7357.0	-15.1	496.3	0.00	0.00	496.4	
5	7578.8	0.00	0.00	7561.0	-15.3	503.6	2.00	180.00	503.7	M27 496 8514D-27 TGT
6	11370.9	0.62	240.97	11353.0	-25.3	485.6	0.02	240.97	486.3	M27 496 8514D-27 PBHL
7	12370.9	0.62	240.97	12353.0	-30.5	476.1	0.00	0.00	477.1	



FORMATION TOP DETAILS		
TVDPath	MDPath	Formation
1045.0	1046.5	A_GROOVE (TVD)
1198.0	1199.9	B_GROOVE (TVD)
2164.0	2168.4	Garden Gulch Member (TVD)
5353.0	5365.5	WASATCH_G (TVD)
7521.0	7538.8	WILLIAMS_FORK (TVD)
7561.0	7578.8	TOG (TVD)
8757.0	8774.8	PRICE_Marker (TVD)
10603.0	10620.8	CAMEO (TVD)
11203.0	11220.9	ROLLINS (TVD)
11413.0	11430.9	COZZETTE (TVD)
11616.0	11633.9	CORCORAN (TVD)
11831.0	11848.9	UPPER_SEGO (TVD)
12081.0	12098.9	SEG0_BASE_TARGET (TVD)



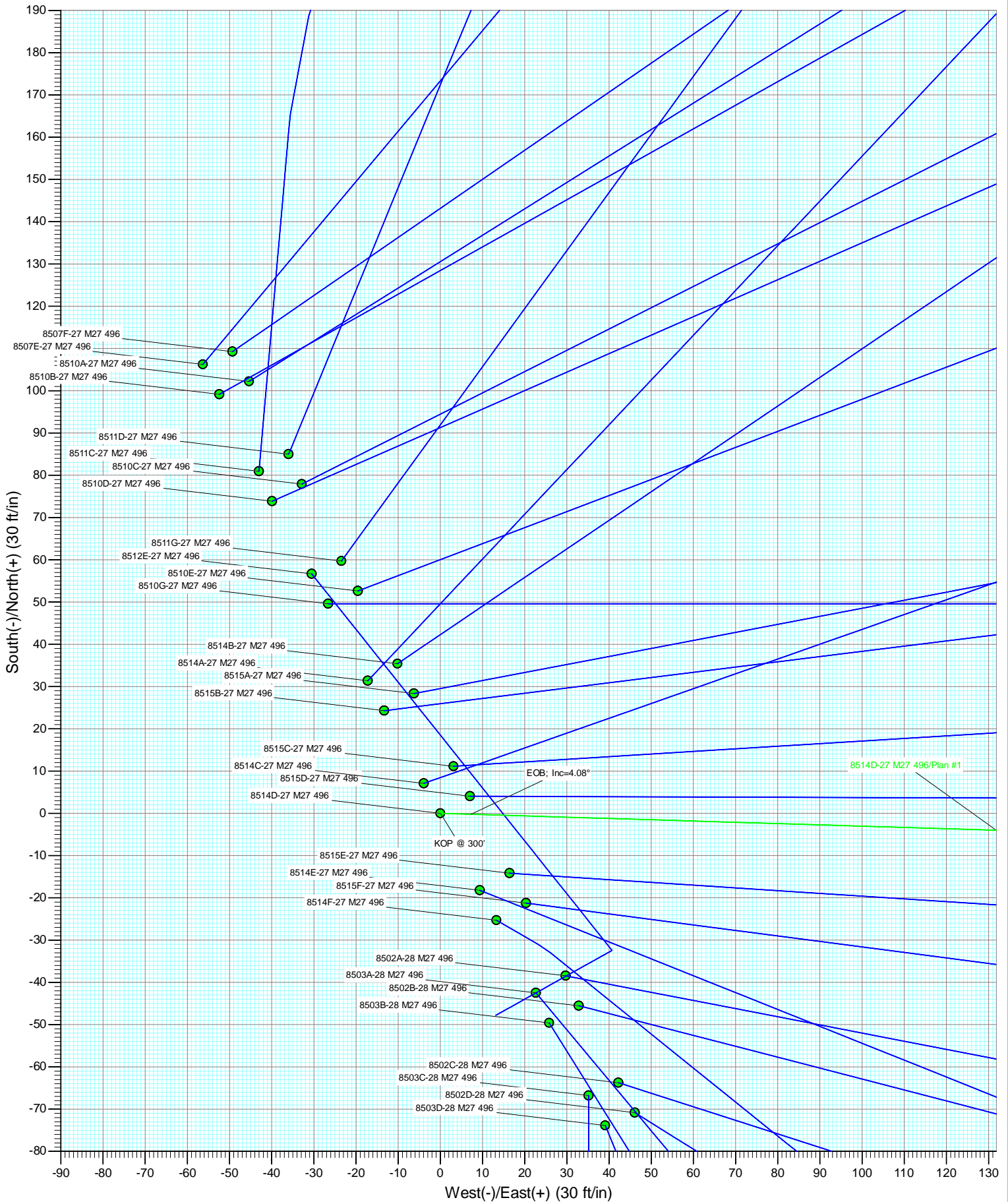
Azimuths to True North  
Magnetic North: 10.41°

Magnetic Field  
Strength: 52277.6snT  
Dip Angle: 65.84°  
Date: 9/21/2011  
Model: IGRF2010

Plan #1									
8514D-27 M27 496									
15sec LR									
KBE @ 8121.0ft (Original Well Elev)									
GL @ 8099.0									
North American Datum 1983									
Well 8514D-27 M27 496, True North									
Type	Target	Azimuth	Origin	N/S	E/W	From	TVD	Latitude	Longitude
Target	M27 496 8514D-27 PBHL	92.98	Slot	0.0	0.0	0.0			
Name	M27 496 8514D-27 TGT	TVD	7561.0	+N/-S	+E/-W	Latitude			
	M27 496 8514D-27 PBHL		11353.0	-15.3	503.6	39° 40' 3.28 N			108° 9' 33.42 W
				-25.3	485.6	39° 40' 3.18 N			108° 9' 33.65 W

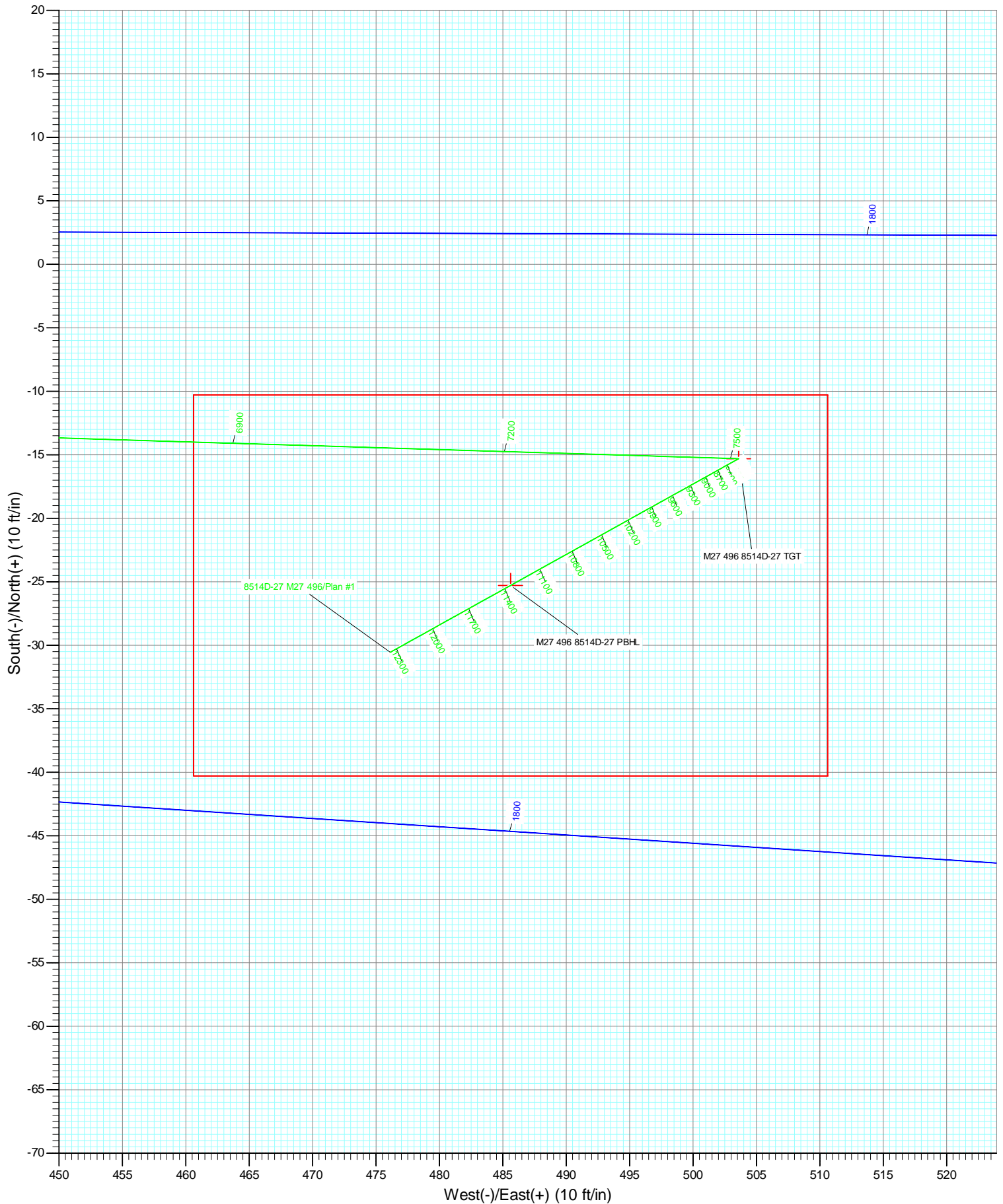


Project: Story Gulch  
Site: S27-T4S-R96W (M27 496)  
Well: 8514D-27 M27 496  
Wellbore: DD  
Design: Plan #1





Project: Story Gulch  
Site: S27-T4S-R96W (M27 496)  
Well: 8514D-27 M27 496  
Wellbore: DD  
Design: Plan #1



## Planning Report

<b>Database:</b>	USA EDM 5000 Multi Users DB	<b>Local Co-ordinate Reference:</b>	Well 8514D-27 M27 496
<b>Company:</b>	EnCana Oil & Gas (USA) Inc	<b>TVD Reference:</b>	KBE @ 8121.0ft (Original Well Elev)
<b>Project:</b>	Story Gulch	<b>MD Reference:</b>	KBE @ 8121.0ft (Original Well Elev)
<b>Site:</b>	S27-T4S-R96W (M27 496)	<b>North Reference:</b>	True
<b>Well:</b>	8514D-27 M27 496	<b>Survey Calculation Method:</b>	Minimum Curvature
<b>Wellbore:</b>	DD		
<b>Design:</b>	Plan #1		

<b>Project</b>	Story Gulch		
<b>Map System:</b>	US State Plane 1983	<b>System Datum:</b>	Mean Sea Level
<b>Geo Datum:</b>	North American Datum 1983		
<b>Map Zone:</b>	Colorado Central Zone		

<b>Site</b>	S27-T4S-R96W (M27 496)			
<b>Site Position:</b>		<b>Northing:</b>	1,678,990.24 ft	<b>Latitude:</b> 39° 40' 3.01 N
<b>From:</b>	Lat/Long	<b>Easting:</b>	2,251,008.33 ft	<b>Longitude:</b> 108° 9' 39.57 W
<b>Position Uncertainty:</b>	0.0 ft	<b>Slot Radius:</b>	13.200 in	<b>Grid Convergence:</b> -1.68 °

<b>Well</b>	8514D-27 M27 496			
<b>Well Position</b>	<b>+N/-S</b>	0.0 ft	<b>Northing:</b>	1,679,033.38 ft
	<b>+E/-W</b>	0.0 ft	<b>Easting:</b>	2,250,986.90 ft
<b>Position Uncertainty</b>	0.0 ft		<b>Wellhead Elevation:</b>	ft
			<b>Ground Level:</b>	8,099.0 ft

<b>Wellbore</b>	DD				
<b>Magnetics</b>	<b>Model Name</b>	<b>Sample Date</b>	<b>Declination (°)</b>	<b>Dip Angle (°)</b>	<b>Field Strength (nT)</b>
	IGRF2010	9/21/2011	10.41	65.84	52,278

<b>Design</b>	Plan #1			
<b>Audit Notes:</b>				
<b>Version:</b>	<b>Phase:</b>	PLAN	<b>Tie On Depth:</b>	0.0
<b>Vertical Section:</b>	<b>Depth From (TVD) (ft)</b>	<b>+N/-S (ft)</b>	<b>+E/-W (ft)</b>	<b>Direction (°)</b>
	0.0	0.0	0.0	92.98

<b>Plan Sections</b>										
Measured Depth (ft)	Inclination (°)	Azimuth (°)	Vertical Depth (ft)	+N/-S (ft)	+E/-W (ft)	Dogleg Rate (°/100ft)	Build Rate (°/100ft)	Turn Rate (°/100ft)	TFO (°)	Target
0.0	0.00	0.00	0.0	0.0	0.0	0.00	0.00	0.00	0.00	
300.0	0.00	0.00	300.0	0.0	0.0	0.00	0.00	0.00	0.00	
504.2	4.08	91.74	504.0	-0.2	7.3	2.00	2.00	0.00	91.74	
7,374.6	4.08	91.74	7,357.0	-15.1	496.3	0.00	0.00	0.00	0.00	
7,578.8	0.00	0.00	7,561.0	-15.3	503.6	2.00	-2.00	0.00	180.00	M27 496 8514D-27 T
11,370.9	0.62	240.97	11,353.0	-25.3	485.6	0.02	0.02	-3.14	240.97	M27 496 8514D-27 P
12,370.9	0.62	240.97	12,353.0	-30.5	476.1	0.00	0.00	0.00	0.00	



# Planning Report

<b>Database:</b>	USA EDM 5000 Multi Users DB	<b>Local Co-ordinate Reference:</b>	Well 8514D-27 M27 496
<b>Company:</b>	EnCana Oil & Gas (USA) Inc	<b>TVD Reference:</b>	KBE @ 8121.0ft (Original Well Elev)
<b>Project:</b>	Story Gulch	<b>MD Reference:</b>	KBE @ 8121.0ft (Original Well Elev)
<b>Site:</b>	S27-T4S-R96W (M27 496)	<b>North Reference:</b>	True
<b>Well:</b>	8514D-27 M27 496	<b>Survey Calculation Method:</b>	Minimum Curvature
<b>Wellbore:</b>	DD		
<b>Design:</b>	Plan #1		

Planned Survey									
Measured Depth (ft)	Inclination (°)	Azimuth (°)	Vertical Depth (ft)	+N/-S (ft)	+E/-W (ft)	Vertical Section (ft)	Dogleg Rate (°/100ft)	Build Rate (°/100ft)	Comments / Formations
0.0	0.00	0.00	0.0	0.0	0.0	0.0	0.00	0.00	
100.0	0.00	0.00	100.0	0.0	0.0	0.0	0.00	0.00	
200.0	0.00	0.00	200.0	0.0	0.0	0.0	0.00	0.00	
300.0	0.00	0.00	300.0	0.0	0.0	0.0	0.00	0.00	KOP @ 300'
400.0	2.00	91.74	400.0	-0.1	1.7	1.7	2.00	2.00	
500.0	4.00	91.74	499.8	-0.2	7.0	7.0	2.00	2.00	
504.2	4.08	91.74	504.0	-0.2	7.3	7.3	2.00	2.00	EOB; Inc=4.08°
600.0	4.08	91.74	599.6	-0.4	14.1	14.1	0.00	0.00	
700.0	4.08	91.74	699.3	-0.6	21.2	21.2	0.00	0.00	
800.0	4.08	91.74	799.1	-0.9	28.3	28.3	0.00	0.00	
900.0	4.08	91.74	898.8	-1.1	35.4	35.5	0.00	0.00	
1,000.0	4.08	91.74	998.6	-1.3	42.6	42.6	0.00	0.00	
1,046.5	4.08	91.74	1,045.0	-1.4	45.9	45.9	0.00	0.00	A_GROOVE (TVD)
1,100.0	4.08	91.74	1,098.3	-1.5	49.7	49.7	0.00	0.00	
1,199.9	4.08	91.74	1,198.0	-1.7	56.8	56.8	0.00	0.00	B_GROOVE (TVD)
1,200.0	4.08	91.74	1,198.1	-1.7	56.8	56.8	0.00	0.00	
1,300.0	4.08	91.74	1,297.8	-1.9	63.9	63.9	0.00	0.00	
1,400.0	4.08	91.74	1,397.6	-2.2	71.0	71.1	0.00	0.00	
1,500.0	4.08	91.74	1,497.3	-2.4	78.2	78.2	0.00	0.00	
1,600.0	4.08	91.74	1,597.0	-2.6	85.3	85.3	0.00	0.00	
1,700.0	4.08	91.74	1,696.8	-2.8	92.4	92.4	0.00	0.00	
1,800.0	4.08	91.74	1,796.5	-3.0	99.5	99.5	0.00	0.00	
1,900.0	4.08	91.74	1,896.3	-3.2	106.6	106.7	0.00	0.00	
2,000.0	4.08	91.74	1,996.0	-3.5	113.7	113.8	0.00	0.00	
2,100.0	4.08	91.74	2,095.8	-3.7	120.9	120.9	0.00	0.00	
2,168.4	4.08	91.74	2,164.0	-3.8	125.7	125.8	0.00	0.00	Garden Gulch Member (TVD)
2,200.0	4.08	91.74	2,195.5	-3.9	128.0	128.0	0.00	0.00	
2,300.0	4.08	91.74	2,295.3	-4.1	135.1	135.1	0.00	0.00	
2,400.0	4.08	91.74	2,395.0	-4.3	142.2	142.3	0.00	0.00	
2,500.0	4.08	91.74	2,494.8	-4.5	149.3	149.4	0.00	0.00	
2,600.0	4.08	91.74	2,594.5	-4.8	156.5	156.5	0.00	0.00	
2,700.0	4.08	91.74	2,694.3	-5.0	163.6	163.6	0.00	0.00	
2,800.0	4.08	91.74	2,794.0	-5.2	170.7	170.7	0.00	0.00	
2,900.0	4.08	91.74	2,893.7	-5.4	177.8	177.9	0.00	0.00	
3,000.0	4.08	91.74	2,993.5	-5.6	184.9	185.0	0.00	0.00	
3,100.0	4.08	91.74	3,093.2	-5.8	192.0	192.1	0.00	0.00	
3,200.0	4.08	91.74	3,193.0	-6.1	199.2	199.2	0.00	0.00	
3,300.0	4.08	91.74	3,292.7	-6.3	206.3	206.3	0.00	0.00	
3,400.0	4.08	91.74	3,392.5	-6.5	213.4	213.5	0.00	0.00	
3,500.0	4.08	91.74	3,492.2	-6.7	220.5	220.6	0.00	0.00	
3,600.0	4.08	91.74	3,592.0	-6.9	227.6	227.7	0.00	0.00	
3,700.0	4.08	91.74	3,691.7	-7.1	234.8	234.8	0.00	0.00	
3,800.0	4.08	91.74	3,791.5	-7.3	241.9	241.9	0.00	0.00	
3,900.0	4.08	91.74	3,891.2	-7.6	249.0	249.1	0.00	0.00	
4,000.0	4.08	91.74	3,991.0	-7.8	256.1	256.2	0.00	0.00	
4,100.0	4.08	91.74	4,090.7	-8.0	263.2	263.3	0.00	0.00	
4,200.0	4.08	91.74	4,190.4	-8.2	270.4	270.4	0.00	0.00	
4,300.0	4.08	91.74	4,290.2	-8.4	277.5	277.5	0.00	0.00	
4,400.0	4.08	91.74	4,389.9	-8.6	284.6	284.7	0.00	0.00	
4,500.0	4.08	91.74	4,489.7	-8.9	291.7	291.8	0.00	0.00	
4,600.0	4.08	91.74	4,589.4	-9.1	298.8	298.9	0.00	0.00	
4,700.0	4.08	91.74	4,689.2	-9.3	305.9	306.0	0.00	0.00	

# Planning Report

<b>Database:</b>	USA EDM 5000 Multi Users DB	<b>Local Co-ordinate Reference:</b>	Well 8514D-27 M27 496
<b>Company:</b>	EnCana Oil & Gas (USA) Inc	<b>TVD Reference:</b>	KBE @ 8121.0ft (Original Well Elev)
<b>Project:</b>	Story Gulch	<b>MD Reference:</b>	KBE @ 8121.0ft (Original Well Elev)
<b>Site:</b>	S27-T4S-R96W (M27 496)	<b>North Reference:</b>	True
<b>Well:</b>	8514D-27 M27 496	<b>Survey Calculation Method:</b>	Minimum Curvature
<b>Wellbore:</b>	DD		
<b>Design:</b>	Plan #1		

Planned Survey									
Measured Depth (ft)	Inclination (°)	Azimuth (°)	Vertical Depth (ft)	+N/-S (ft)	+E/-W (ft)	Vertical Section (ft)	Dogleg Rate (°/100ft)	Build Rate (°/100ft)	Comments / Formations
4,800.0	4.08	91.74	4,788.9	-9.5	313.1	313.1	0.00	0.00	
4,900.0	4.08	91.74	4,888.7	-9.7	320.2	320.3	0.00	0.00	
5,000.0	4.08	91.74	4,988.4	-9.9	327.3	327.4	0.00	0.00	
5,100.0	4.08	91.74	5,088.2	-10.2	334.4	334.5	0.00	0.00	
5,200.0	4.08	91.74	5,187.9	-10.4	341.5	341.6	0.00	0.00	
5,300.0	4.08	91.74	5,287.7	-10.6	348.7	348.7	0.00	0.00	
5,365.5	4.08	91.74	5,353.0	-10.7	353.3	353.4	0.00	0.00	WASATCH_G (TVD)
5,400.0	4.08	91.74	5,387.4	-10.8	355.8	355.9	0.00	0.00	
5,500.0	4.08	91.74	5,487.1	-11.0	362.9	363.0	0.00	0.00	
5,600.0	4.08	91.74	5,586.9	-11.2	370.0	370.1	0.00	0.00	
5,700.0	4.08	91.74	5,686.6	-11.5	377.1	377.2	0.00	0.00	
5,800.0	4.08	91.74	5,786.4	-11.7	384.2	384.3	0.00	0.00	
5,900.0	4.08	91.74	5,886.1	-11.9	391.4	391.5	0.00	0.00	
6,000.0	4.08	91.74	5,985.9	-12.1	398.5	398.6	0.00	0.00	
6,100.0	4.08	91.74	6,085.6	-12.3	405.6	405.7	0.00	0.00	
6,200.0	4.08	91.74	6,185.4	-12.5	412.7	412.8	0.00	0.00	
6,300.0	4.08	91.74	6,285.1	-12.8	419.8	419.9	0.00	0.00	
6,400.0	4.08	91.74	6,384.9	-13.0	427.0	427.1	0.00	0.00	
6,500.0	4.08	91.74	6,484.6	-13.2	434.1	434.2	0.00	0.00	
6,600.0	4.08	91.74	6,584.3	-13.4	441.2	441.3	0.00	0.00	
6,700.0	4.08	91.74	6,684.1	-13.6	448.3	448.4	0.00	0.00	
6,800.0	4.08	91.74	6,783.8	-13.8	455.4	455.5	0.00	0.00	
6,900.0	4.08	91.74	6,883.6	-14.1	462.5	462.7	0.00	0.00	
7,000.0	4.08	91.74	6,983.3	-14.3	469.7	469.8	0.00	0.00	
7,100.0	4.08	91.74	7,083.1	-14.5	476.8	476.9	0.00	0.00	
7,200.0	4.08	91.74	7,182.8	-14.7	483.9	484.0	0.00	0.00	
7,300.0	4.08	91.74	7,282.6	-14.9	491.0	491.1	0.00	0.00	
7,374.6	4.08	91.74	7,357.0	-15.1	496.3	496.4	0.00	0.00	Start Drop -2.00
7,400.0	3.58	91.74	7,382.3	-15.1	498.0	498.1	2.00	-2.00	
7,500.0	1.58	91.74	7,482.2	-15.3	502.5	502.6	2.00	-2.00	
7,538.8	0.80	91.74	7,521.0	-15.3	503.3	503.4	2.00	-2.00	WILLIAMS_FORK (TVD)
7,578.8	0.00	0.00	7,561.0	-15.3	503.6	503.7	2.00	-2.00	EOD; Inc=0° - TOG (TVD) - M27 496 8514D-27
7,600.0	0.00	240.97	7,582.2	-15.3	503.6	503.7	0.02	0.02	
7,700.0	0.02	240.97	7,682.2	-15.3	503.6	503.7	0.02	0.02	
7,800.0	0.04	240.97	7,782.2	-15.3	503.5	503.7	0.02	0.02	
7,900.0	0.05	240.97	7,882.2	-15.4	503.5	503.6	0.02	0.02	
8,000.0	0.07	240.97	7,982.2	-15.4	503.4	503.5	0.02	0.02	
8,100.0	0.09	240.97	8,082.2	-15.5	503.3	503.4	0.02	0.02	
8,200.0	0.10	240.97	8,182.2	-15.6	503.1	503.2	0.02	0.02	
8,300.0	0.12	240.97	8,282.2	-15.7	502.9	503.1	0.02	0.02	
8,400.0	0.13	240.97	8,382.2	-15.8	502.8	502.9	0.02	0.02	
8,500.0	0.15	240.97	8,482.2	-15.9	502.5	502.7	0.02	0.02	
8,600.0	0.17	240.97	8,582.2	-16.0	502.3	502.4	0.02	0.02	
8,700.0	0.18	240.97	8,682.2	-16.2	502.0	502.2	0.02	0.02	
8,774.8	0.20	240.97	8,757.0	-16.3	501.8	502.0	0.02	0.02	PRICE_Marker (TVD)
8,800.0	0.20	240.97	8,782.2	-16.3	501.7	501.9	0.02	0.02	
8,900.0	0.22	240.97	8,882.2	-16.5	501.4	501.6	0.02	0.02	
9,000.0	0.23	240.97	8,982.2	-16.7	501.1	501.3	0.02	0.02	
9,100.0	0.25	240.97	9,082.2	-16.9	500.7	500.9	0.02	0.02	
9,200.0	0.27	240.97	9,182.2	-17.1	500.3	500.5	0.02	0.02	
9,300.0	0.28	240.97	9,282.2	-17.4	499.9	500.1	0.02	0.02	
9,400.0	0.30	240.97	9,382.2	-17.6	499.5	499.7	0.02	0.02	

## Planning Report

<b>Database:</b>	USA EDM 5000 Multi Users DB	<b>Local Co-ordinate Reference:</b>	Well 8514D-27 M27 496
<b>Company:</b>	EnCana Oil & Gas (USA) Inc	<b>TVD Reference:</b>	KBE @ 8121.0ft (Original Well Elev)
<b>Project:</b>	Story Gulch	<b>MD Reference:</b>	KBE @ 8121.0ft (Original Well Elev)
<b>Site:</b>	S27-T4S-R96W (M27 496)	<b>North Reference:</b>	True
<b>Well:</b>	8514D-27 M27 496	<b>Survey Calculation Method:</b>	Minimum Curvature
<b>Wellbore:</b>	DD		
<b>Design:</b>	Plan #1		

Planned Survey									
Measured Depth (ft)	Inclination (°)	Azimuth (°)	Vertical Depth (ft)	+N/-S (ft)	+E/-W (ft)	Vertical Section (ft)	Dogleg Rate (°/100ft)	Build Rate (°/100ft)	Comments / Formations
9,500.0	0.31	240.97	9,482.2	-17.9	499.0	499.2	0.02	0.02	
9,600.0	0.33	240.97	9,582.2	-18.1	498.5	498.8	0.02	0.02	
9,700.0	0.35	240.97	9,682.2	-18.4	498.0	498.3	0.02	0.02	
9,800.0	0.36	240.97	9,782.2	-18.7	497.4	497.7	0.02	0.02	
9,900.0	0.38	240.97	9,882.2	-19.0	496.9	497.2	0.02	0.02	
10,000.0	0.40	240.97	9,982.2	-19.4	496.3	496.6	0.02	0.02	
10,100.0	0.41	240.97	10,082.2	-19.7	495.6	496.0	0.02	0.02	
10,200.0	0.43	240.97	10,182.2	-20.1	495.0	495.4	0.02	0.02	
10,300.0	0.45	240.97	10,282.2	-20.4	494.3	494.7	0.02	0.02	
10,400.0	0.46	240.97	10,382.2	-20.8	493.6	494.1	0.02	0.02	
10,500.0	0.48	240.97	10,482.2	-21.2	492.9	493.4	0.02	0.02	
10,600.0	0.50	240.97	10,582.2	-21.6	492.2	492.6	0.02	0.02	
10,620.8	0.50	240.97	10,603.0	-21.7	492.0	492.5	0.01	0.01	CAMEO (TVD)
10,700.0	0.51	240.97	10,682.2	-22.1	491.4	491.9	0.02	0.02	
10,800.0	0.53	240.97	10,782.2	-22.5	490.6	491.1	0.02	0.02	
10,900.0	0.54	240.97	10,882.2	-23.0	489.8	490.3	0.02	0.02	
11,000.0	0.56	240.97	10,982.2	-23.4	489.0	489.5	0.02	0.02	
11,100.0	0.58	240.97	11,082.2	-23.9	488.1	488.7	0.02	0.02	
11,200.0	0.59	240.97	11,182.1	-24.4	487.2	487.8	0.02	0.02	
11,220.9	0.60	240.97	11,203.0	-24.5	487.0	487.6	0.02	0.02	ROLLINS (TVD)
11,300.0	0.61	240.97	11,282.1	-24.9	486.3	486.9	0.01	0.01	
11,370.9	0.62	240.97	11,353.0	-25.3	485.6	486.3	0.02	0.02	Drillers TD @ 11,353' TVD - M27 496 8514D-27
11,400.0	0.62	240.97	11,382.1	-25.4	485.3	486.0	0.00	0.00	
11,430.9	0.62	240.97	11,413.0	-25.6	485.0	485.7	0.00	0.00	COZZETTE (TVD)
11,500.0	0.62	240.97	11,482.1	-26.0	484.4	485.1	0.00	0.00	
11,600.0	0.62	240.97	11,582.1	-26.5	483.4	484.2	0.00	0.00	
11,633.9	0.62	240.97	11,616.0	-26.7	483.1	483.8	0.00	0.00	CORCORAN (TVD)
11,700.0	0.62	240.97	11,682.1	-27.0	482.5	483.2	0.00	0.00	
11,800.0	0.62	240.97	11,782.1	-27.5	481.5	482.3	0.00	0.00	
11,848.9	0.62	240.97	11,831.0	-27.8	481.1	481.9	0.00	0.00	UPPER_SEGO (TVD)
11,900.0	0.62	240.97	11,882.1	-28.1	480.6	481.4	0.00	0.00	
12,000.0	0.62	240.97	11,982.1	-28.6	479.6	480.5	0.00	0.00	
12,098.9	0.62	240.97	12,081.0	-29.1	478.7	479.6	0.00	0.00	SEGO_BASE_TARGET (TVD)
12,100.0	0.62	240.97	12,082.1	-29.1	478.7	479.6	0.00	0.00	
12,200.0	0.62	240.97	12,182.1	-29.6	477.7	478.6	0.00	0.00	
12,300.0	0.62	240.97	12,282.1	-30.2	476.8	477.7	0.00	0.00	
12,370.9	0.62	240.97	12,353.0	-30.5	476.1	477.1	0.00	0.00	Permit TD @ 12,353' TVD

Targets									
Target Name	Dip Angle (°)	Dip Dir. (°)	TVD (ft)	+N/-S (ft)	+E/-W (ft)	Northing (ft)	Easting (ft)	Latitude	Longitude
M27 496 8514D-27 TGT - hit/miss target - Shape - Point	0.00	0.00	7,561.0	-15.3	503.6	1,679,003.33	2,251,489.84	39° 40' 3.28 N	108° 9' 33.42 W
M27 496 8514D-27 PBH - plan hits target center - Rectangle (sides W30.0 H50.0 D0.0)	0.00	0.00	11,353.0	-25.3	485.6	1,678,993.88	2,251,471.56	39° 40' 3.18 N	108° 9' 33.65 W

## Planning Report

<b>Database:</b>	USA EDM 5000 Multi Users DB	<b>Local Co-ordinate Reference:</b>	Well 8514D-27 M27 496
<b>Company:</b>	EnCana Oil & Gas (USA) Inc	<b>TVD Reference:</b>	KBE @ 8121.0ft (Original Well Elev)
<b>Project:</b>	Story Gulch	<b>MD Reference:</b>	KBE @ 8121.0ft (Original Well Elev)
<b>Site:</b>	S27-T4S-R96W (M27 496)	<b>North Reference:</b>	True
<b>Well:</b>	8514D-27 M27 496	<b>Survey Calculation Method:</b>	Minimum Curvature
<b>Wellbore:</b>	DD		
<b>Design:</b>	Plan #1		

### Formations

Measured Depth (ft)	Vertical Depth (ft)	Name	Lithology	Dip (°)	Dip Direction (°)
1,046.5	1,045.0	A_GROOVE (TVD)			
1,199.9	1,198.0	B_GROOVE (TVD)			
2,168.4	2,164.0	Garden Gulch Member (TVD)			
5,365.5	5,353.0	WASATCH_G (TVD)			
7,538.8	7,521.0	WILLIAMS_FORK (TVD)			
7,578.8	7,561.0	TOG (TVD)			
8,774.8	8,757.0	PRICE_Marker (TVD)			
10,620.8	10,603.0	CAMEO (TVD)			
11,220.9	11,203.0	ROLLINS (TVD)			
11,430.9	11,413.0	COZZETTE (TVD)			
11,633.9	11,616.0	CORCORAN (TVD)			
11,848.9	11,831.0	UPPER_SEGO (TVD)			
12,098.9	12,081.0	SEGO_BASE_TARGET (TVD)			

### Plan Annotations

Measured Depth (ft)	Vertical Depth (ft)	Local Coordinates		Comment
		+N/-S (ft)	+E/-W (ft)	
300.0	300.0	0.0	0.0	KOP @ 300'
504.2	504.0	-0.2	7.3	EOB; Inc=4.08°
7,374.6	7,357.0	-15.1	496.3	Start Drop -2.00
7,578.8	7,561.0	-15.3	503.6	EOD; Inc=0°
11,370.9	11,353.0	-25.3	485.6	Drillers TD @ 11,353' TVD
12,370.9	12,353.0	-30.5	476.1	Permit TD @ 12,353' TVD