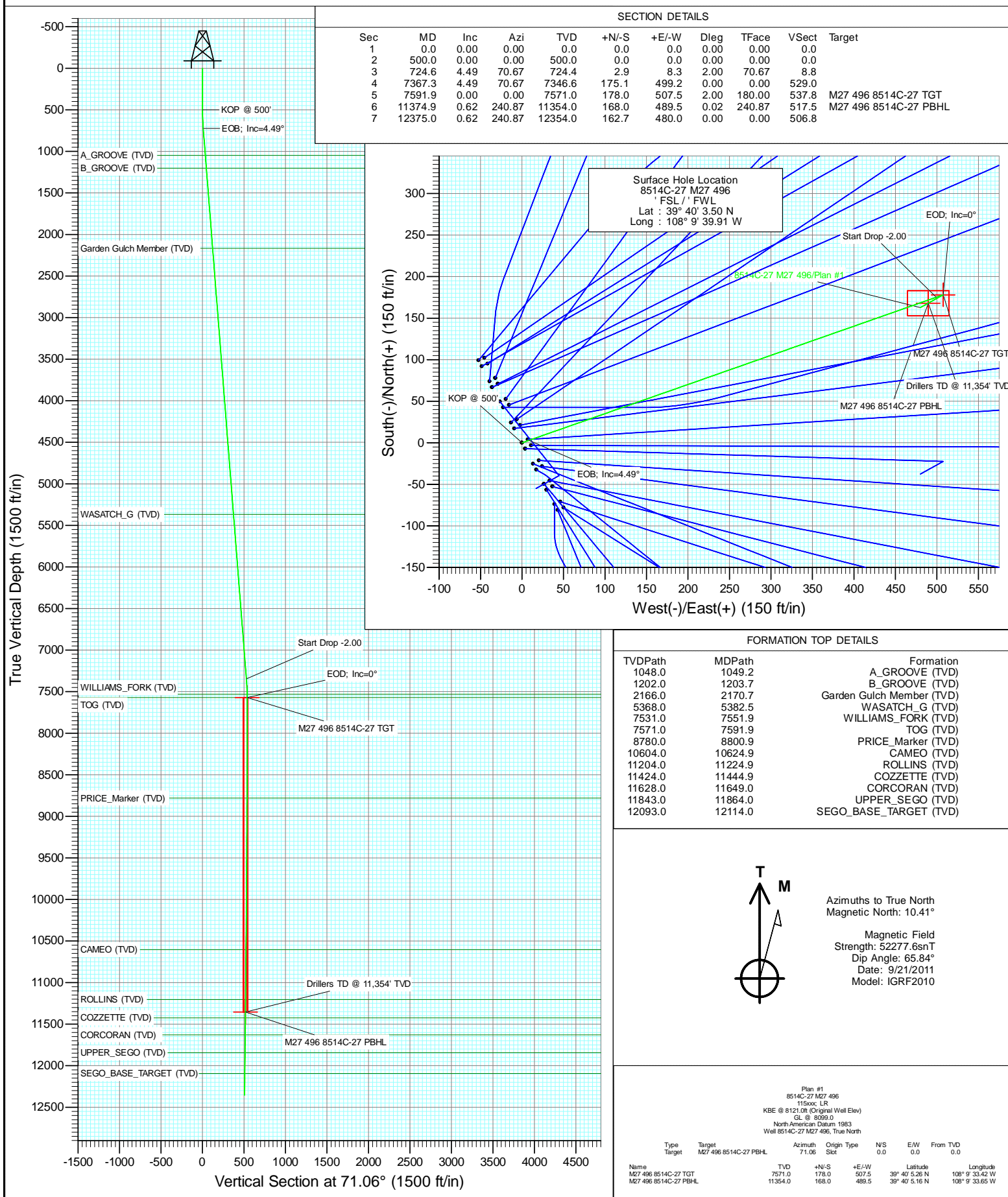


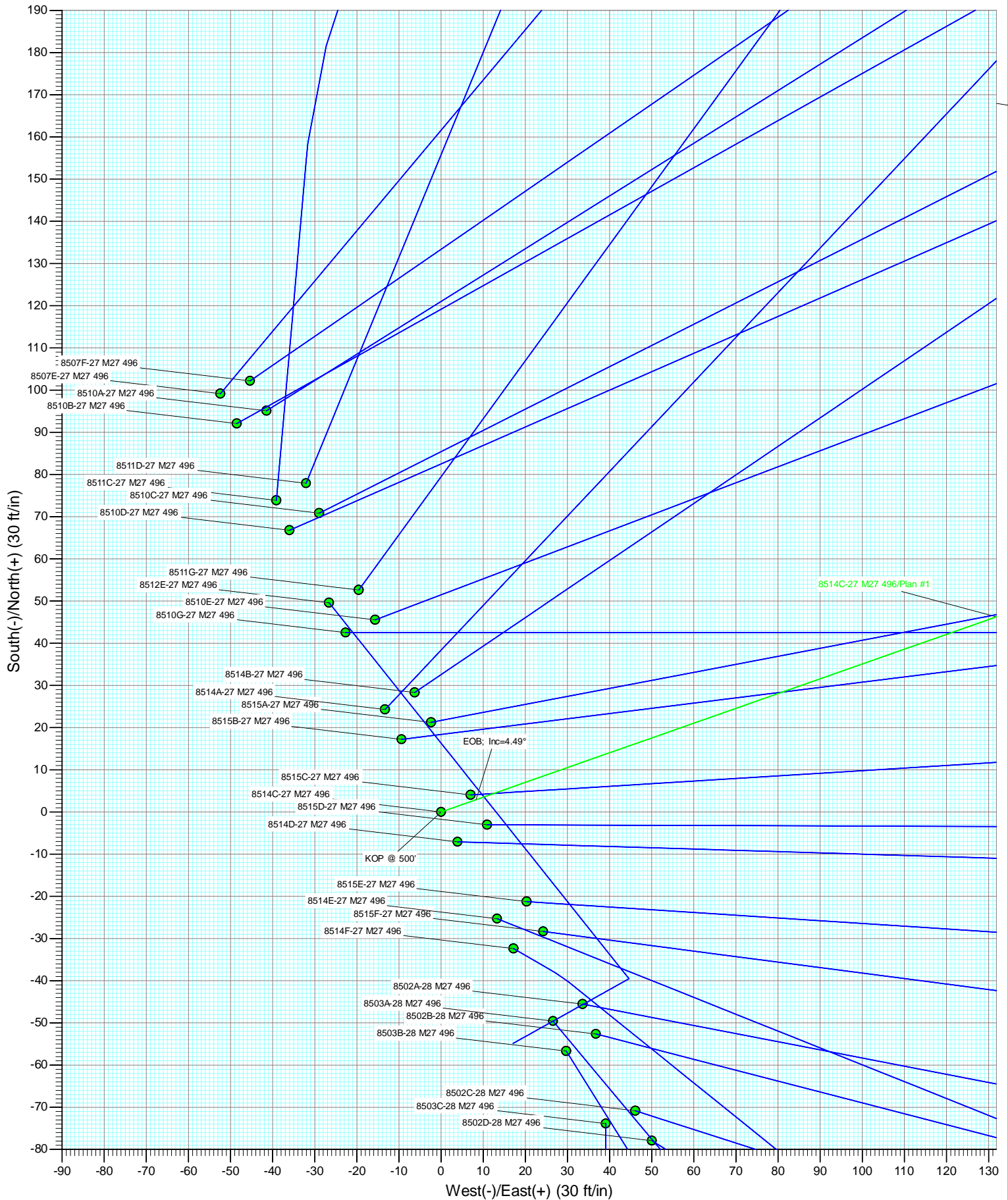


Project: Story Gulch
Site: S27-T4S-R96W (M27 496)
Well: 8514C-27 M27 496
Wellbore: DD
Design: Plan #1



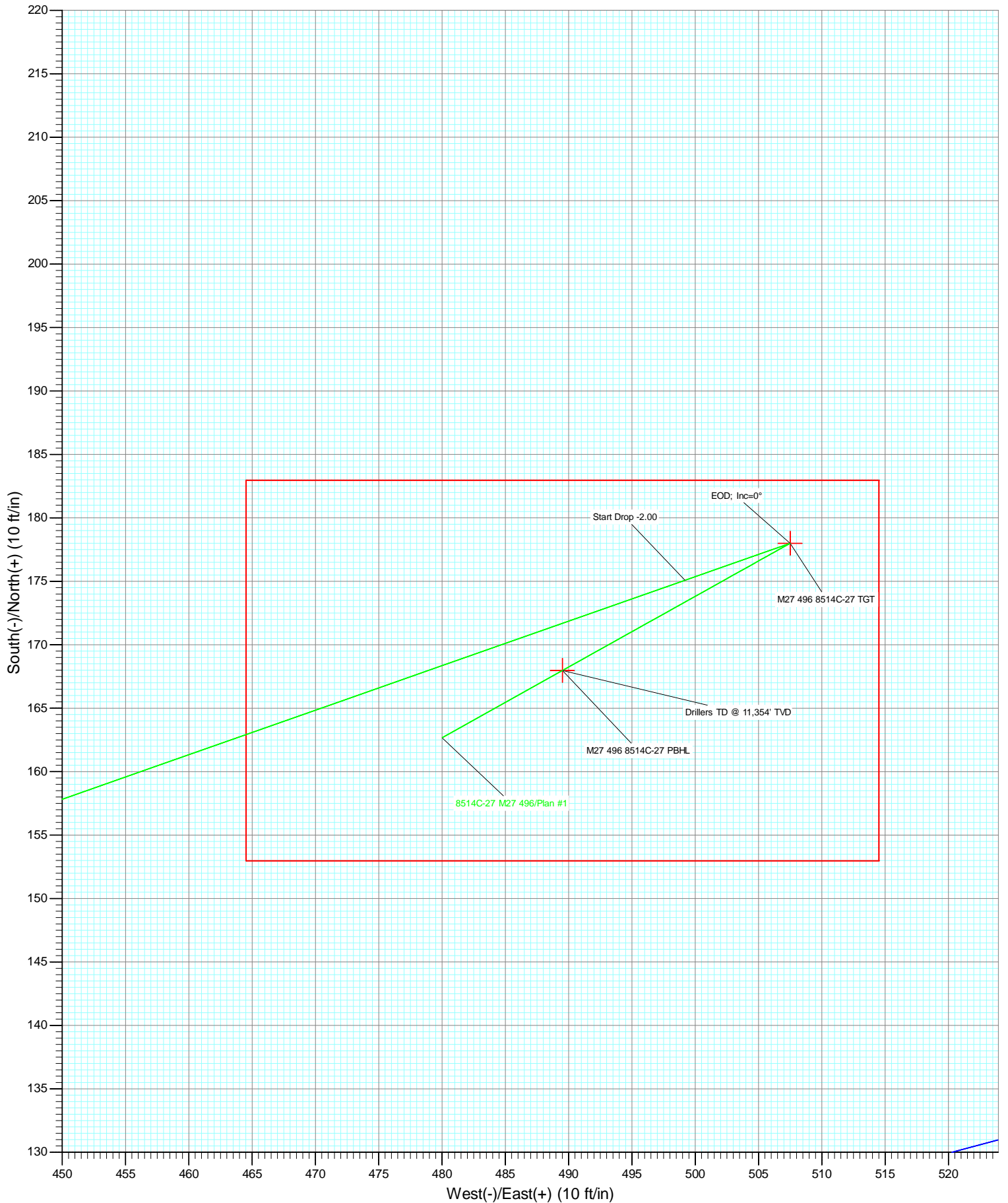


Project: Story Gulch
Site: S27-T4S-R96W (M27 496)
Well: 8514C-27 M27 496
Wellbore: DD
Design: Plan #1





Project: Story Gulch
Site: S27-T4S-R96W (M27 496)
Well: 8514C-27 M27 496
Wellbore: DD
Design: Plan #1



Planning Report

Database:	USA EDM 5000 Multi Users DB	Local Co-ordinate Reference:	Well 8514C-27 M27 496
Company:	EnCana Oil & Gas (USA) Inc	TVD Reference:	KBE @ 8121.0ft (Original Well Elev)
Project:	Story Gulch	MD Reference:	KBE @ 8121.0ft (Original Well Elev)
Site:	S27-T4S-R96W (M27 496)	North Reference:	True
Well:	8514C-27 M27 496	Survey Calculation Method:	Minimum Curvature
Wellbore:	DD		
Design:	Plan #1		

Project	Story Gulch		
Map System:	US State Plane 1983	System Datum:	Mean Sea Level
Geo Datum:	North American Datum 1983		
Map Zone:	Colorado Central Zone		

Site	S27-T4S-R96W (M27 496)			
Site Position:		Northing:	1,678,990.24 ft	Latitude: 39° 40' 3.01 N
From:	Lat/Long	Easting:	2,251,008.33 ft	Longitude: 108° 9' 39.57 W
Position Uncertainty:	0.0 ft	Slot Radius:	13.200 in	Grid Convergence: -1.68 °

Well	8514C-27 M27 496			
Well Position	+N/-S	0.0 ft	Northing:	1,679,040.57 ft
	+E/-W	0.0 ft	Easting:	2,250,983.20 ft
Position Uncertainty		0.0 ft	Wellhead Elevation:	ft
			Ground Level:	8,099.0 ft

Wellbore	DD				
Magnetics	Model Name	Sample Date	Declination (°)	Dip Angle (°)	Field Strength (nT)
	IGRF2010	9/21/2011	10.41	65.84	52,278

Design	Plan #1			
Audit Notes:				
Version:	Phase:	PLAN	Tie On Depth:	0.0
Vertical Section:	Depth From (TVD) (ft)	+N/-S (ft)	+E/-W (ft)	Direction (°)
	0.0	0.0	0.0	71.06

Plan Sections										
Measured Depth (ft)	Inclination (°)	Azimuth (°)	Vertical Depth (ft)	+N/-S (ft)	+E/-W (ft)	Dogleg Rate (°/100ft)	Build Rate (°/100ft)	Turn Rate (°/100ft)	TFO (°)	Target
0.0	0.00	0.00	0.0	0.0	0.0	0.00	0.00	0.00	0.00	
500.0	0.00	0.00	500.0	0.0	0.0	0.00	0.00	0.00	0.00	
724.6	4.49	70.67	724.4	2.9	8.3	2.00	2.00	0.00	70.67	
7,367.3	4.49	70.67	7,346.6	175.1	499.2	0.00	0.00	0.00	0.00	
7,591.9	0.00	0.00	7,571.0	178.0	507.5	2.00	-2.00	0.00	180.00	M27 496 8514C-27 T
11,374.9	0.62	240.87	11,354.0	168.0	489.5	0.02	0.02	-3.15	240.87	M27 496 8514C-27 P
12,375.0	0.62	240.87	12,354.0	162.7	480.0	0.00	0.00	0.00	0.00	

Planning Report

Database:	USA EDM 5000 Multi Users DB	Local Co-ordinate Reference:	Well 8514C-27 M27 496
Company:	EnCana Oil & Gas (USA) Inc	TVD Reference:	KBE @ 8121.0ft (Original Well Elev)
Project:	Story Gulch	MD Reference:	KBE @ 8121.0ft (Original Well Elev)
Site:	S27-T4S-R96W (M27 496)	North Reference:	True
Well:	8514C-27 M27 496	Survey Calculation Method:	Minimum Curvature
Wellbore:	DD		
Design:	Plan #1		

Planned Survey									
Measured Depth (ft)	Inclination (°)	Azimuth (°)	Vertical Depth (ft)	+N/-S (ft)	+E/-W (ft)	Vertical Section (ft)	Dogleg Rate (°/100ft)	Build Rate (°/100ft)	Comments / Formations
0.0	0.00	0.00	0.0	0.0	0.0	0.0	0.00	0.00	
100.0	0.00	0.00	100.0	0.0	0.0	0.0	0.00	0.00	
200.0	0.00	0.00	200.0	0.0	0.0	0.0	0.00	0.00	
300.0	0.00	0.00	300.0	0.0	0.0	0.0	0.00	0.00	
400.0	0.00	0.00	400.0	0.0	0.0	0.0	0.00	0.00	
500.0	0.00	0.00	500.0	0.0	0.0	0.0	0.00	0.00	KOP @ 500'
600.0	2.00	70.67	600.0	0.6	1.6	1.7	2.00	2.00	
700.0	4.00	70.67	699.8	2.3	6.6	7.0	2.00	2.00	
724.6	4.49	70.67	724.4	2.9	8.3	8.8	2.00	2.00	EOB; Inc=4.49°
800.0	4.49	70.67	799.5	4.9	13.9	14.7	0.00	0.00	
900.0	4.49	70.67	899.2	7.5	21.3	22.5	0.00	0.00	
1,000.0	4.49	70.67	998.9	10.1	28.7	30.4	0.00	0.00	
1,049.2	4.49	70.67	1,048.0	11.3	32.3	34.2	0.00	0.00	A_GROOVE (TVD)
1,100.0	4.49	70.67	1,098.6	12.6	36.0	38.2	0.00	0.00	
1,200.0	4.49	70.67	1,198.3	15.2	43.4	46.0	0.00	0.00	
1,203.7	4.49	70.67	1,202.0	15.3	43.7	46.3	0.00	0.00	B_GROOVE (TVD)
1,300.0	4.49	70.67	1,298.0	17.8	50.8	53.9	0.00	0.00	
1,400.0	4.49	70.67	1,397.7	20.4	58.2	61.7	0.00	0.00	
1,500.0	4.49	70.67	1,497.4	23.0	65.6	69.5	0.00	0.00	
1,600.0	4.49	70.67	1,597.1	25.6	73.0	77.4	0.00	0.00	
1,700.0	4.49	70.67	1,696.8	28.2	80.4	85.2	0.00	0.00	
1,800.0	4.49	70.67	1,796.5	30.8	87.8	93.0	0.00	0.00	
1,900.0	4.49	70.67	1,896.2	33.4	95.2	100.8	0.00	0.00	
2,000.0	4.49	70.67	1,995.9	36.0	102.6	108.7	0.00	0.00	
2,100.0	4.49	70.67	2,095.5	38.6	109.9	116.5	0.00	0.00	
2,170.7	4.49	70.67	2,166.0	40.4	115.2	122.0	0.00	0.00	Garden Gulch Member (TVD)
2,200.0	4.49	70.67	2,195.2	41.2	117.3	124.3	0.00	0.00	
2,300.0	4.49	70.67	2,294.9	43.7	124.7	132.2	0.00	0.00	
2,400.0	4.49	70.67	2,394.6	46.3	132.1	140.0	0.00	0.00	
2,500.0	4.49	70.67	2,494.3	48.9	139.5	147.8	0.00	0.00	
2,600.0	4.49	70.67	2,594.0	51.5	146.9	155.7	0.00	0.00	
2,700.0	4.49	70.67	2,693.7	54.1	154.3	163.5	0.00	0.00	
2,800.0	4.49	70.67	2,793.4	56.7	161.7	171.3	0.00	0.00	
2,900.0	4.49	70.67	2,893.1	59.3	169.1	179.2	0.00	0.00	
3,000.0	4.49	70.67	2,992.8	61.9	176.5	187.0	0.00	0.00	
3,100.0	4.49	70.67	3,092.5	64.5	183.8	194.8	0.00	0.00	
3,200.0	4.49	70.67	3,192.2	67.1	191.2	202.7	0.00	0.00	
3,300.0	4.49	70.67	3,291.9	69.7	198.6	210.5	0.00	0.00	
3,400.0	4.49	70.67	3,391.6	72.3	206.0	218.3	0.00	0.00	
3,500.0	4.49	70.67	3,491.2	74.8	213.4	226.1	0.00	0.00	
3,600.0	4.49	70.67	3,590.9	77.4	220.8	234.0	0.00	0.00	
3,700.0	4.49	70.67	3,690.6	80.0	228.2	241.8	0.00	0.00	
3,800.0	4.49	70.67	3,790.3	82.6	235.6	249.6	0.00	0.00	
3,900.0	4.49	70.67	3,890.0	85.2	243.0	257.5	0.00	0.00	
4,000.0	4.49	70.67	3,989.7	87.8	250.4	265.3	0.00	0.00	
4,100.0	4.49	70.67	4,089.4	90.4	257.7	273.1	0.00	0.00	
4,200.0	4.49	70.67	4,189.1	93.0	265.1	281.0	0.00	0.00	
4,300.0	4.49	70.67	4,288.8	95.6	272.5	288.8	0.00	0.00	
4,400.0	4.49	70.67	4,388.5	98.2	279.9	296.6	0.00	0.00	
4,500.0	4.49	70.67	4,488.2	100.8	287.3	304.5	0.00	0.00	
4,600.0	4.49	70.67	4,587.9	103.4	294.7	312.3	0.00	0.00	
4,700.0	4.49	70.67	4,687.6	106.0	302.1	320.1	0.00	0.00	

Planning Report

Database:	USA EDM 5000 Multi Users DB	Local Co-ordinate Reference:	Well 8514C-27 M27 496
Company:	EnCana Oil & Gas (USA) Inc	TVD Reference:	KBE @ 8121.0ft (Original Well Elev)
Project:	Story Gulch	MD Reference:	KBE @ 8121.0ft (Original Well Elev)
Site:	S27-T4S-R96W (M27 496)	North Reference:	True
Well:	8514C-27 M27 496	Survey Calculation Method:	Minimum Curvature
Wellbore:	DD		
Design:	Plan #1		

Planned Survey									
Measured Depth (ft)	Inclination (°)	Azimuth (°)	Vertical Depth (ft)	+N/-S (ft)	+E/-W (ft)	Vertical Section (ft)	Dogleg Rate (°/100ft)	Build Rate (°/100ft)	Comments / Formations
4,800.0	4.49	70.67	4,787.3	108.5	309.5	328.0	0.00	0.00	
4,900.0	4.49	70.67	4,886.9	111.1	316.9	335.8	0.00	0.00	
5,000.0	4.49	70.67	4,986.6	113.7	324.3	343.6	0.00	0.00	
5,100.0	4.49	70.67	5,086.3	116.3	331.6	351.4	0.00	0.00	
5,200.0	4.49	70.67	5,186.0	118.9	339.0	359.3	0.00	0.00	
5,300.0	4.49	70.67	5,285.7	121.5	346.4	367.1	0.00	0.00	
5,382.5	4.49	70.67	5,368.0	123.6	352.5	373.6	0.00	0.00	WASATCH_G (TVD)
5,400.0	4.49	70.67	5,385.4	124.1	353.8	374.9	0.00	0.00	
5,500.0	4.49	70.67	5,485.1	126.7	361.2	382.8	0.00	0.00	
5,600.0	4.49	70.67	5,584.8	129.3	368.6	390.6	0.00	0.00	
5,700.0	4.49	70.67	5,684.5	131.9	376.0	398.4	0.00	0.00	
5,800.0	4.49	70.67	5,784.2	134.5	383.4	406.3	0.00	0.00	
5,900.0	4.49	70.67	5,883.9	137.1	390.8	414.1	0.00	0.00	
6,000.0	4.49	70.67	5,983.6	139.6	398.2	421.9	0.00	0.00	
6,100.0	4.49	70.67	6,083.3	142.2	405.5	429.8	0.00	0.00	
6,200.0	4.49	70.67	6,183.0	144.8	412.9	437.6	0.00	0.00	
6,300.0	4.49	70.67	6,282.6	147.4	420.3	445.4	0.00	0.00	
6,400.0	4.49	70.67	6,382.3	150.0	427.7	453.3	0.00	0.00	
6,500.0	4.49	70.67	6,482.0	152.6	435.1	461.1	0.00	0.00	
6,600.0	4.49	70.67	6,581.7	155.2	442.5	468.9	0.00	0.00	
6,700.0	4.49	70.67	6,681.4	157.8	449.9	476.7	0.00	0.00	
6,800.0	4.49	70.67	6,781.1	160.4	457.3	484.6	0.00	0.00	
6,900.0	4.49	70.67	6,880.8	163.0	464.7	492.4	0.00	0.00	
7,000.0	4.49	70.67	6,980.5	165.6	472.1	500.2	0.00	0.00	
7,100.0	4.49	70.67	7,080.2	168.2	479.4	508.1	0.00	0.00	
7,200.0	4.49	70.67	7,179.9	170.8	486.8	515.9	0.00	0.00	
7,300.0	4.49	70.67	7,279.6	173.3	494.2	523.7	0.00	0.00	
7,367.3	4.49	70.67	7,346.6	175.1	499.2	529.0	0.00	0.00	Start Drop -2.00
7,400.0	3.84	70.67	7,379.3	175.9	501.4	531.4	2.00	-2.00	
7,500.0	1.84	70.67	7,479.2	177.5	506.1	536.3	2.00	-2.00	
7,551.9	0.80	70.67	7,531.0	177.9	507.2	537.5	2.00	-2.00	WILLIAMS_FORK (TVD)
7,591.9	0.00	0.00	7,571.0	178.0	507.5	537.8	2.00	-2.00	EOD; Inc=0° - TOG (TVD) - M27 496 8514C-27
7,600.0	0.00	240.87	7,579.1	178.0	507.5	537.8	0.02	0.02	
7,700.0	0.02	240.87	7,679.1	178.0	507.5	537.8	0.02	0.02	
7,800.0	0.03	240.87	7,779.1	178.0	507.4	537.7	0.02	0.02	
7,900.0	0.05	240.87	7,879.1	177.9	507.4	537.7	0.02	0.02	
8,000.0	0.07	240.87	7,979.1	177.9	507.3	537.6	0.02	0.02	
8,100.0	0.08	240.87	8,079.1	177.8	507.2	537.4	0.02	0.02	
8,200.0	0.10	240.87	8,179.1	177.7	507.0	537.3	0.02	0.02	
8,300.0	0.12	240.87	8,279.1	177.6	506.9	537.1	0.02	0.02	
8,400.0	0.13	240.87	8,379.1	177.5	506.7	536.9	0.02	0.02	
8,500.0	0.15	240.87	8,479.1	177.4	506.5	536.6	0.02	0.02	
8,600.0	0.17	240.87	8,579.1	177.3	506.2	536.4	0.02	0.02	
8,700.0	0.18	240.87	8,679.1	177.1	506.0	536.1	0.02	0.02	
8,800.0	0.20	240.87	8,779.1	177.0	505.7	535.7	0.02	0.02	
8,800.9	0.16	240.87	8,780.0	177.0	505.7	535.7	4.77	-4.77	PRICE_Marker (TVD)
8,900.0	0.22	240.87	8,879.1	176.8	505.3	535.4	0.06	0.06	
9,000.0	0.23	240.87	8,979.1	176.6	505.0	535.0	0.02	0.02	
9,100.0	0.25	240.87	9,079.1	176.4	504.6	534.6	0.02	0.02	
9,200.0	0.27	240.87	9,179.1	176.2	504.3	534.1	0.02	0.02	
9,300.0	0.28	240.87	9,279.1	176.0	503.8	533.7	0.02	0.02	
9,400.0	0.30	240.87	9,379.1	175.7	503.4	533.2	0.02	0.02	

Planning Report

Database:	USA EDM 5000 Multi Users DB	Local Co-ordinate Reference:	Well 8514C-27 M27 496
Company:	EnCana Oil & Gas (USA) Inc	TVD Reference:	KBE @ 8121.0ft (Original Well Elev)
Project:	Story Gulch	MD Reference:	KBE @ 8121.0ft (Original Well Elev)
Site:	S27-T4S-R96W (M27 496)	North Reference:	True
Well:	8514C-27 M27 496	Survey Calculation Method:	Minimum Curvature
Wellbore:	DD		
Design:	Plan #1		

Planned Survey									
Measured Depth (ft)	Inclination (°)	Azimuth (°)	Vertical Depth (ft)	+N/-S (ft)	+E/-W (ft)	Vertical Section (ft)	Dogleg Rate (°/100ft)	Build Rate (°/100ft)	Comments / Formations
9,500.0	0.31	240.87	9,479.1	175.5	502.9	532.6	0.02	0.02	
9,600.0	0.33	240.87	9,579.1	175.2	502.4	532.1	0.02	0.02	
9,700.0	0.35	240.87	9,679.1	174.9	501.9	531.5	0.02	0.02	
9,800.0	0.36	240.87	9,779.1	174.6	501.4	530.9	0.02	0.02	
9,900.0	0.38	240.87	9,879.1	174.3	500.8	530.3	0.02	0.02	
10,000.0	0.40	240.87	9,979.1	173.9	500.2	529.6	0.02	0.02	
10,100.0	0.41	240.87	10,079.1	173.6	499.6	528.9	0.02	0.02	
10,200.0	0.43	240.87	10,179.1	173.2	499.0	528.2	0.02	0.02	
10,300.0	0.45	240.87	10,279.1	172.9	498.3	527.4	0.02	0.02	
10,400.0	0.46	240.87	10,379.1	172.5	497.6	526.6	0.02	0.02	
10,500.0	0.48	240.87	10,479.1	172.1	496.9	525.8	0.02	0.02	
10,600.0	0.50	240.87	10,579.1	171.7	496.1	525.0	0.02	0.02	
10,624.9	0.50	240.87	10,604.0	171.6	495.9	524.8	0.01	0.01	CAMEO (TVD)
10,700.0	0.51	240.87	10,679.1	171.2	495.4	524.1	0.02	0.02	
10,800.0	0.53	240.87	10,779.1	170.8	494.6	523.2	0.02	0.02	
10,900.0	0.55	240.87	10,879.1	170.3	493.7	522.3	0.02	0.02	
11,000.0	0.56	240.87	10,979.1	169.9	492.9	521.4	0.02	0.02	
11,100.0	0.58	240.87	11,079.1	169.4	492.0	520.4	0.02	0.02	
11,200.0	0.59	240.87	11,179.1	168.9	491.1	519.4	0.02	0.02	
11,224.9	0.60	240.87	11,204.0	168.8	490.9	519.1	0.01	0.01	ROLLINS (TVD)
11,300.0	0.61	240.87	11,279.1	168.4	490.2	518.3	0.02	0.02	
11,374.9	0.62	240.87	11,354.0	168.0	489.5	517.5	0.02	0.02	Drillers TD @ 11,354' TVD - M27 496 8514C-27
11,400.0	0.62	240.87	11,379.1	167.8	489.3	517.3	0.00	0.00	
11,444.9	0.62	240.87	11,424.0	167.6	488.9	516.8	0.00	0.00	COZZETTE (TVD)
11,500.0	0.62	240.87	11,479.1	167.3	488.3	516.2	0.00	0.00	
11,600.0	0.62	240.87	11,579.1	166.8	487.4	515.1	0.00	0.00	
11,649.0	0.62	240.87	11,628.0	166.5	486.9	514.6	0.00	0.00	CORCORAN (TVD)
11,700.0	0.62	240.87	11,679.0	166.3	486.4	514.1	0.00	0.00	
11,800.0	0.62	240.87	11,779.0	165.7	485.5	513.0	0.00	0.00	
11,864.0	0.62	240.87	11,843.0	165.4	484.9	512.3	0.00	0.00	UPPER_SEGO (TVD)
11,900.0	0.62	240.87	11,879.0	165.2	484.5	511.9	0.00	0.00	
12,000.0	0.62	240.87	11,979.0	164.7	483.6	510.8	0.00	0.00	
12,100.0	0.62	240.87	12,079.0	164.1	482.6	509.8	0.00	0.00	
12,114.0	0.62	240.87	12,093.0	164.1	482.5	509.6	0.00	0.00	SEGO_BASE_TARGET (TVD)
12,200.0	0.62	240.87	12,179.0	163.6	481.7	508.7	0.00	0.00	
12,300.0	0.62	240.87	12,279.0	163.1	480.7	507.6	0.00	0.00	
12,375.0	0.62	240.87	12,354.0	162.7	480.0	506.8	0.00	0.00	Permit TD @ 12,354' TVD

Targets									
Target Name									
- hit/miss target	Dip Angle (°)	Dip Dir. (°)	TVD (ft)	+N/-S (ft)	+E/-W (ft)	Northing (ft)	Easting (ft)	Latitude	Longitude
- Shape									
M27 496 8514C-27 TGT	0.00	0.00	7,571.0	178.0	507.5	1,679,203.63	2,251,495.70	39° 40' 5.26 N	108° 9' 33.42 W
- plan hits target center									
- Point									
M27 496 8514C-27 PBH	0.00	0.00	11,354.0	168.0	489.5	1,679,194.14	2,251,477.43	39° 40' 5.16 N	108° 9' 33.65 W
- plan hits target center									
- Rectangle (sides W30.0 H50.0 D0.0)									

Planning Report

Database:	USA EDM 5000 Multi Users DB	Local Co-ordinate Reference:	Well 8514C-27 M27 496
Company:	EnCana Oil & Gas (USA) Inc	TVD Reference:	KBE @ 8121.0ft (Original Well Elev)
Project:	Story Gulch	MD Reference:	KBE @ 8121.0ft (Original Well Elev)
Site:	S27-T4S-R96W (M27 496)	North Reference:	True
Well:	8514C-27 M27 496	Survey Calculation Method:	Minimum Curvature
Wellbore:	DD		
Design:	Plan #1		

Formations

Measured Depth (ft)	Vertical Depth (ft)	Name	Lithology	Dip (°)	Dip Direction (°)
1,049.2	1,048.0	A_GROOVE (TVD)			
1,203.7	1,202.0	B_GROOVE (TVD)			
2,170.7	2,166.0	Garden Gulch Member (TVD)			
5,382.5	5,368.0	WASATCH_G (TVD)			
7,551.9	7,531.0	WILLIAMS_FORK (TVD)			
7,591.9	7,571.0	TOG (TVD)			
8,800.9	8,780.0	PRICE_Marker (TVD)			
10,624.9	10,604.0	CAMEO (TVD)			
11,224.9	11,204.0	ROLLINS (TVD)			
11,444.9	11,424.0	COZZETTE (TVD)			
11,649.0	11,628.0	CORCORAN (TVD)			
11,864.0	11,843.0	UPPER_SEGO (TVD)			
12,114.0	12,093.0	SEGO_BASE_TARGET (TVD)			

Plan Annotations

Measured Depth (ft)	Vertical Depth (ft)	Local Coordinates		Comment
		+N/-S (ft)	+E/-W (ft)	
500.0	500.0	0.0	0.0	KOP @ 500'
724.6	724.4	2.9	8.3	EOB; Inc=4.49°
7,367.3	7,346.6	175.1	499.2	Start Drop -2.00
7,591.9	7,571.0	178.0	507.5	EOD; Inc=0°
11,374.9	11,354.0	168.0	489.5	Drillers TD @ 11,354' TVD
12,375.0	12,354.0	162.7	480.0	Permit TD @ 12,354' TVD

EnCana Oil & Gas (USA) Inc

Story Gulch

S27-T4S-R96W (M27 496)

8514C-27 M27 496

DD

Plan #1

Anticollision Report

27 September, 2011

Anticollision Report

Company:	EnCana Oil & Gas (USA) Inc	Local Co-ordinate Reference:	Well 8514C-27 M27 496
Project:	Story Gulch	TVD Reference:	KBE @ 8121.0ft (Original Well Elev)
Reference Site:	S27-T4S-R96W (M27 496)	MD Reference:	KBE @ 8121.0ft (Original Well Elev)
Site Error:	0.0ft	North Reference:	True
Reference Well:	8514C-27 M27 496	Survey Calculation Method:	Minimum Curvature
Well Error:	0.0ft	Output errors are at	2.00 sigma
Reference Wellbore	DD	Database:	USA EDM 5000 Multi Users DB
Reference Design:	Plan #1	Offset TVD Reference:	Offset Datum

Reference	Plan #1		
Filter type:	GLOBAL FILTER APPLIED: All wellpaths within 200'+ 100/1000 of reference		
Interpolation Method:	MD Interval 100.0ft	Error Model:	Systematic Ellipse
Depth Range:	Unlimited	Scan Method:	Closest Approach 3D
Results Limited by:	Maximum center-center distance of 200.0ft	Error Surface:	Elliptical Conic
Warning Levels Evaluated at:	2.00 Sigma		

Survey Tool Program		Date	9/27/2011		
From (ft)	To (ft)	Survey (Wellbore)	Tool Name	Description	
0.0	12,374.1	Plan #1 (DD)	MWD	Geolink MWD	

Anticollision Report

Company:	EnCana Oil & Gas (USA) Inc	Local Co-ordinate Reference:	Well 8514C-27 M27 496
Project:	Story Gulch	TVD Reference:	KBE @ 8121.0ft (Original Well Elev)
Reference Site:	S27-T4S-R96W (M27 496)	MD Reference:	KBE @ 8121.0ft (Original Well Elev)
Site Error:	0.0ft	North Reference:	True
Reference Well:	8514C-27 M27 496	Survey Calculation Method:	Minimum Curvature
Well Error:	0.0ft	Output errors are at	2.00 sigma
Reference Wellbore	DD	Database:	USA EDM 5000 Multi Users DB
Reference Design:	Plan #1	Offset TVD Reference:	Offset Datum

Summary

Site Name	Reference Measured Depth (ft)	Offset Measured Depth (ft)	Distance Between Centres (ft)	Between Ellipses (ft)	Separation Factor	Warning
S27-T4S-R96W (M27 496)						
8502A-28 M27 496 - DD - Plan #1	233.6	233.6	56.6	55.9	76.649	CC, ES
8502A-28 M27 496 - DD - Plan #1	700.0	684.0	96.5	94.0	39.574	SF
8502B-28 M27 496 - DD - Plan #1	200.0	200.0	64.2	63.6	103.295	CC, ES
8502B-28 M27 496 - DD - Plan #1	700.0	678.6	115.3	112.9	47.097	SF
8502C-28 M27 496 - DD - Plan #1	233.5	233.5	84.5	83.8	114.522	CC, ES
8502C-28 M27 496 - DD - Plan #1	800.0	771.1	143.5	140.6	50.375	SF
8502D-28 M27 496 - DD - Plan #1	200.0	200.0	92.6	92.0	149.034	CC, ES
8502D-28 M27 496 - DD - Plan #1	800.0	760.4	170.9	168.2	61.582	SF
8503A-28 M27 496 - DD - Plan #1	724.1	723.8	55.6	53.1	22.505	CC, ES
8503A-28 M27 496 - DD - Plan #1	1,400.0	1,397.7	76.8	71.9	15.542	SF
8503B-28 M27 496 - DD - Plan #1	200.0	200.0	64.0	63.4	102.980	CC, ES
8503B-28 M27 496 - DD - Plan #1	1,400.0	1,382.4	191.2	186.1	37.106	SF
8503C-28 M27 496 - DD - Plan #1	233.4	233.4	83.6	82.8	113.275	CC, ES
8503C-28 M27 496 - DD - Plan #1	1,200.0	1,177.8	194.5	190.2	45.681	SF
8503D-28 M27 496 - DD - Plan #1	200.0	200.0	91.7	91.0	147.532	CC, ES
8503D-28 M27 496 - DD - Plan #1	1,000.0	972.9	185.9	182.5	53.530	SF
8507E-27 M27 496 - DD - Plan #1	200.0	200.0	112.1	111.5	180.492	CC, ES
8507E-27 M27 496 - DD - Plan #1	900.0	871.5	168.4	164.5	43.823	SF
8507F-27 M27 496 - DD - Plan #1	200.0	200.0	111.8	111.2	179.934	CC, ES
8507F-27 M27 496 - DD - Plan #1	900.0	870.7	168.8	165.0	44.248	SF
8510A-27 M27 496 - DD - Plan #1	200.0	200.0	103.7	103.1	166.972	CC, ES
8510A-27 M27 496 - DD - Plan #1	900.0	872.5	159.4	155.6	41.931	SF
8510B-27 M27 496 - DD - Plan #1	200.0	200.0	104.1	103.4	167.473	CC
8510B-27 M27 496 - DD - Plan #1	300.0	299.8	104.2	103.2	107.237	ES
8510B-27 M27 496 - DD - Plan #1	900.0	876.7	150.9	147.1	38.738	SF
8510C-27 M27 496 - DD - Plan #1	200.0	200.0	76.5	75.9	123.131	CC
8510C-27 M27 496 - DD - Plan #1	300.0	299.6	76.8	75.8	79.020	ES
8510C-27 M27 496 - DD - Plan #1	800.0	783.4	114.5	111.3	35.526	SF
8510D-27 M27 496 - DD - Plan #1	354.0	354.2	75.6	74.4	64.986	CC
8510D-27 M27 496 - DD - Plan #1	400.0	400.0	75.7	74.4	57.018	ES
8510D-27 M27 496 - DD - Plan #1	800.0	787.0	105.2	101.9	31.866	SF
8510E-27 M27 496 - DD - Plan #1	200.0	200.0	48.1	47.5	77.484	CC
8510E-27 M27 496 - DD - Plan #1	300.0	299.8	48.3	47.3	49.710	ES
8510E-27 M27 496 - DD - Plan #1	600.0	594.3	63.4	61.2	28.520	SF
8510G-27 M27 496 - DD - Plan #1	411.8	412.3	46.7	45.3	34.109	CC, ES
8510G-27 M27 496 - DD - Plan #1	600.0	597.0	54.4	52.1	23.850	SF
8511C-27 M27 496 - DD - Plan #1	200.0	200.0	83.6	82.9	134.500	CC, ES
8511C-27 M27 496 - DD - Plan #1	1,100.0	1,072.8	185.5	181.3	44.285	SF
8511D-27 M27 496 - DD - Plan #1	200.0	200.0	84.3	83.6	135.595	CC, ES
8511D-27 M27 496 - DD - Plan #1	1,200.0	1,175.6	195.7	191.1	42.676	SF
8511G-27 M27 496 - DD - Plan #1	200.0	200.0	56.1	55.5	90.337	CC, ES
8511G-27 M27 496 - DD - Plan #1	2,200.0	2,189.1	197.9	189.0	22.364	SF
8512E-27 M27 496 - DD - Plan #1	684.1	684.9	54.9	52.5	23.612	CC
8512E-27 M27 496 - DD - Plan #1	700.0	700.7	54.9	52.5	23.054	ES
8512E-27 M27 496 - DD - Plan #1	1,500.0	1,498.5	83.6	78.3	15.967	SF
8514A-27 M27 496 - DD - Plan #1	200.0	200.0	27.7	27.1	44.556	CC, ES
8514A-27 M27 496 - DD - Plan #1	3,600.0	3,593.4	199.2	184.4	13.431	SF
8514B-27 M27 496 - DD - Plan #1	200.0	200.0	29.0	28.4	46.689	CC, ES
8514B-27 M27 496 - DD - Plan #1	12,375.0	12,380.9	198.3	152.0	4.282	SF
8514D-27 M27 496 - DD - Plan #1	300.0	300.0	8.1	7.1	8.337	CC, ES
8514D-27 M27 496 - DD - Plan #1	2,400.0	2,398.5	59.4	49.7	6.145	SF
8514E-27 M27 496 - DD - Plan #1	400.0	400.0	28.6	27.3	21.657	CC, ES
8514E-27 M27 496 - DD - Plan #1	3,700.0	3,693.5	196.3	181.2	12.966	SF

CC - Min centre to center distance or convergent point, SF - min separation factor, ES - min ellipse separation

Anticollision Report

Company:	EnCana Oil & Gas (USA) Inc	Local Co-ordinate Reference:	Well 8514C-27 M27 496
Project:	Story Gulch	TVD Reference:	KBE @ 8121.0ft (Original Well Elev)
Reference Site:	S27-T4S-R96W (M27 496)	MD Reference:	KBE @ 8121.0ft (Original Well Elev)
Site Error:	0.0ft	North Reference:	True
Reference Well:	8514C-27 M27 496	Survey Calculation Method:	Minimum Curvature
Well Error:	0.0ft	Output errors are at	2.00 sigma
Reference Wellbore	DD	Database:	USA EDM 5000 Multi Users DB
Reference Design:	Plan #1	Offset TVD Reference:	Offset Datum

Summary						
Site Name	Reference Measured Depth (ft)	Offset Measured Depth (ft)	Distance Between Centres (ft)	Distance Between Ellipses (ft)	Separation Factor	Warning
Offset Well - Wellbore - Design						
S27-T4S-R96W (M27 496)						
8514F-27 M27 496 - DD - Plan #1	300.0	300.0	36.7	35.7	37.784	CC, ES
8514F-27 M27 496 - DD - Plan #1	2,500.0	2,489.9	196.6	186.6	19.795	SF
8515A-27 M27 496 - DD - Plan #1	200.0	200.0	21.4	20.8	34.406	CC, ES
8515A-27 M27 496 - DD - Plan #1	400.0	399.1	24.5	23.2	18.162	SF
8515B-27 M27 496 - DD - Plan #1	365.6	365.8	18.2	17.0	15.135	CC, ES
8515B-27 M27 496 - DD - Plan #1	500.0	498.7	24.5	22.7	13.634	SF
8515C-27 M27 496 - DD - Plan #1	300.0	300.0	8.1	7.1	8.366	CC, ES
8515C-27 M27 496 - DD - Plan #1	400.0	399.5	10.5	9.2	7.938	SF
8515D-27 M27 496 - DD - Plan #1	200.0	200.0	11.4	10.7	18.284	CC, ES
8515D-27 M27 496 - DD - Plan #1	300.0	299.3	13.9	12.9	14.237	SF
8515E-27 M27 496 - DD - Plan #1	300.0	300.0	29.4	28.4	30.306	CC, ES
8515E-27 M27 496 - DD - Plan #1	500.0	497.1	37.7	36.0	22.416	SF
8515F-27 M27 496 - DD - Plan #1	200.0	200.0	37.3	36.7	60.011	CC, ES
8515F-27 M27 496 - DD - Plan #1	500.0	493.4	56.6	54.9	32.573	SF
S28-T4S-R96W (P28 496) (10 ac Pattern)						
8504A-34 P28 496 - DD - Plan #1						Out of range
8504A-34 P28 496 - DD - Plan #1						Out of range
8504A-34 P28 496 - DD - Plan #1						Out of range
8512D-28 P28 496 - DD - Plan #1						Out of range
8512D-28 P28 496 - DD - Plan #1						Out of range
8513A-27 P28 496 - DD - Plan #1						Out of range
8513B-27 P28 496 - DD - Plan #1						Out of range
8513C-27 P28 496 - DD - Plan #1						Out of range
8513C-27 P28 496 - DD - Plan #1						Out of range
8513D-27 P28 496 - DD - Plan #1						Out of range
8513D-27 P28 496 - DD - Plan #1						Out of range

Anticollision Report

Company:	EnCana Oil & Gas (USA) Inc	Local Co-ordinate Reference:	Well 8514C-27 M27 496
Project:	Story Gulch	TVD Reference:	KBE @ 8121.0ft (Original Well Elev)
Reference Site:	S27-T4S-R96W (M27 496)	MD Reference:	KBE @ 8121.0ft (Original Well Elev)
Site Error:	0.0ft	North Reference:	True
Reference Well:	8514C-27 M27 496	Survey Calculation Method:	Minimum Curvature
Well Error:	0.0ft	Output errors are at	2.00 sigma
Reference Wellbore	DD	Database:	USA EDM 5000 Multi Users DB
Reference Design:	Plan #1	Offset TVD Reference:	Offset Datum

Offset Design S27-T4S-R96W (M27 496) - 8502A-28 M27 496 - DD - Plan #1												Offset Site Error: 0.0 ft	
Survey Program: 0-MWD												Offset Well Error: 0.0 ft	
Reference		Offset		Semi Major Axis			Distance						Warning
Measured Depth (ft)	Vertical Depth (ft)	Measured Depth (ft)	Vertical Depth (ft)	Reference (ft)	Offset (ft)	Highside Toolface (°)	Offset Wellbore Centre +N/-S (ft)	+E/-W (ft)	Between Centres (ft)	Between Ellipses (ft)	Total Uncertainty Axis	Separation Factor	
0.0	0.0	0.0	0.0	0.0	0.0	143.55	-45.5	33.6	56.6				
100.0	100.0	100.0	100.0	0.1	0.1	143.55	-45.5	33.6	56.6	56.3	0.27	207.890	
200.0	200.0	200.0	200.0	0.3	0.3	143.55	-45.5	33.6	56.6	56.0	0.62	91.098	
233.6	233.6	233.6	233.6	0.4	0.4	143.55	-45.5	33.6	56.6	55.9	0.74	76.649	CC, ES
300.0	300.0	298.9	298.9	0.5	0.5	143.13	-45.7	34.2	57.1	56.1	0.97	58.923	
400.0	400.0	396.5	396.4	0.7	0.7	139.97	-46.6	39.1	61.0	59.6	1.32	46.235	
500.0	500.0	493.3	492.7	0.8	0.9	134.79	-48.5	48.8	69.2	67.5	1.69	41.006	
600.0	600.0	589.2	587.4	1.0	1.2	59.19	-51.2	63.1	81.4	79.3	2.05	39.615	
700.0	699.8	684.0	680.3	1.2	1.6	55.91	-54.8	81.8	96.5	94.0	2.44	39.574	SF
800.0	799.5	777.5	770.8	1.4	2.0	53.69	-59.2	104.7	114.8	112.0	2.84	40.483	
900.0	899.2	869.1	858.4	1.6	2.5	51.45	-64.4	131.3	137.6	134.4	3.23	42.568	
1,000.0	998.9	958.5	942.4	1.8	3.1	49.34	-70.1	161.2	164.9	161.3	3.62	45.532	
1,100.0	1,098.6	1,048.0	1,025.1	2.0	3.8	47.42	-76.6	194.8	196.4	192.4	4.00	49.088	

Anticollision Report

Company:	EnCana Oil & Gas (USA) Inc	Local Co-ordinate Reference:	Well 8514C-27 M27 496
Project:	Story Gulch	TVD Reference:	KBE @ 8121.0ft (Original Well Elev)
Reference Site:	S27-T4S-R96W (M27 496)	MD Reference:	KBE @ 8121.0ft (Original Well Elev)
Site Error:	0.0ft	North Reference:	True
Reference Well:	8514C-27 M27 496	Survey Calculation Method:	Minimum Curvature
Well Error:	0.0ft	Output errors are at	2.00 sigma
Reference Wellbore	DD	Database:	USA EDM 5000 Multi Users DB
Reference Design:	Plan #1	Offset TVD Reference:	Offset Datum

Offset Design													S27-T4S-R96W (M27 496) - 8502B-28 M27 496 - DD - Plan #1		Offset Site Error:		0.0 ft
Survey Program:													0-MWD		Offset Well Error:		0.0 ft
Reference		Offset		Semi Major Axis			Distance										
Measured Depth	Vertical Depth	Measured Depth	Vertical Depth	Reference	Offset	Highside Toolface	Offset Wellbore Centre		Between Centres	Between Ellipses	Total Uncertainty Axis	Separation Factor	Warning				
(ft)	(ft)	(ft)	(ft)	(ft)	(ft)	(°)	+N/-S (ft)	+E/-W (ft)	(ft)	(ft)							
0.0	0.0	0.0	0.0	0.0	0.0	145.06	-52.6	36.8	64.2								
100.0	100.0	100.0	100.0	0.1	0.1	145.06	-52.6	36.8	64.2	63.9	0.27	235.723					
200.0	200.0	200.0	200.0	0.3	0.3	145.06	-52.6	36.8	64.2	63.6	0.62	103.295	CC, ES				
300.0	300.0	297.4	297.4	0.5	0.5	143.66	-53.2	39.2	66.1	65.2	0.97	68.311					
400.0	400.0	394.3	394.0	0.7	0.7	139.94	-55.1	46.3	72.2	70.9	1.33	54.407					
500.0	500.0	490.3	489.2	0.8	1.0	135.02	-58.1	58.1	82.9	81.2	1.72	48.213					
600.0	600.0	585.0	582.4	1.0	1.3	59.93	-62.3	74.2	97.6	95.5	2.07	47.257					
700.0	699.8	678.6	673.6	1.2	1.7	57.07	-67.5	94.5	115.3	112.9	2.45	47.097	SF				
800.0	799.5	770.7	762.2	1.4	2.2	55.24	-73.8	118.7	136.2	133.4	2.85	47.884					
900.0	899.2	860.7	847.6	1.6	2.8	53.44	-80.9	146.3	161.6	158.3	3.24	49.852					
1,000.0	998.9	948.4	929.4	1.8	3.4	51.73	-88.8	176.9	191.3	187.7	3.63	52.734					

Anticollision Report

Company:	EnCana Oil & Gas (USA) Inc	Local Co-ordinate Reference:	Well 8514C-27 M27 496
Project:	Story Gulch	TVD Reference:	KBE @ 8121.0ft (Original Well Elev)
Reference Site:	S27-T4S-R96W (M27 496)	MD Reference:	KBE @ 8121.0ft (Original Well Elev)
Site Error:	0.0ft	North Reference:	True
Reference Well:	8514C-27 M27 496	Survey Calculation Method:	Minimum Curvature
Well Error:	0.0ft	Output errors are at	2.00 sigma
Reference Wellbore	DD	Database:	USA EDM 5000 Multi Users DB
Reference Design:	Plan #1	Offset TVD Reference:	Offset Datum

Offset Design		S27-T4S-R96W (M27 496) - 8502C-28 M27 496 - DD - Plan #1											Offset Site Error:		0.0 ft		
Survey Program:		0-MWD											Offset Well Error:		0.0 ft		
Reference		Offset		Semi Major Axis			Distance										
Measured Depth	Vertical Depth	Measured Depth	Vertical Depth	Reference	Offset	Highside Toolface	Offset Wellbore Centre		Between Centres	Between Ellipses	Total Uncertainty	Separation	Warning				
Depth (ft)	Depth (ft)	Depth (ft)	Depth (ft)	(ft)	(ft)	(°)	+N/-S (ft)	+E/-W (ft)	(ft)	(ft)	Axis	Factor					
0.0	0.0	0.0	0.0	0.0	0.0	146.92	-70.8	46.1	84.5								
100.0	100.0	100.0	100.0	0.1	0.1	146.92	-70.8	46.1	84.5	84.3	0.27	310.461					
200.0	200.0	200.0	200.0	0.3	0.3	146.92	-70.8	46.1	84.5	83.9	0.62	136.045					
233.5	233.5	233.5	233.5	0.4	0.4	146.92	-70.8	46.1	84.5	83.8	0.74	114.522	CC, ES				
300.0	300.0	298.3	298.3	0.5	0.5	146.66	-71.0	46.7	85.0	84.1	0.97	87.865					
400.0	400.0	394.7	394.6	0.7	0.7	144.69	-72.5	51.4	89.0	87.7	1.32	67.644					
500.0	500.0	490.4	489.8	0.8	0.9	141.26	-75.4	60.5	97.3	95.6	1.68	57.834					
600.0	600.0	585.1	583.4	1.0	1.2	67.04	-79.8	74.1	109.4	107.4	2.05	53.415					
700.0	699.8	678.8	675.2	1.2	1.5	64.51	-85.5	91.8	124.8	122.3	2.44	51.160					
800.0	799.5	771.1	764.7	1.4	2.0	62.74	-92.4	113.4	143.5	140.6	2.85	50.375	SF				
900.0	899.2	861.6	851.2	1.6	2.5	60.84	-100.5	138.6	166.5	163.2	3.26	51.053					
1,000.0	998.9	949.9	934.4	1.8	3.1	58.92	-109.6	166.9	193.9	190.2	3.67	52.824					

Anticollision Report

Company:	EnCana Oil & Gas (USA) Inc	Local Co-ordinate Reference:	Well 8514C-27 M27 496
Project:	Story Gulch	TVD Reference:	KBE @ 8121.0ft (Original Well Elev)
Reference Site:	S27-T4S-R96W (M27 496)	MD Reference:	KBE @ 8121.0ft (Original Well Elev)
Site Error:	0.0ft	North Reference:	True
Reference Well:	8514C-27 M27 496	Survey Calculation Method:	Minimum Curvature
Well Error:	0.0ft	Output errors are at	2.00 sigma
Reference Wellbore	DD	Database:	USA EDM 5000 Multi Users DB
Reference Design:	Plan #1	Offset TVD Reference:	Offset Datum

Offset Design		S27-T4S-R96W (M27 496) - 8502D-28 M27 496 - DD - Plan #1											Offset Site Error:		0.0 ft			
Survey Program:		0-MWD													Offset Well Error:		0.0 ft	
Reference		Offset		Semi Major Axis			Distance											
Measured Depth	Vertical Depth	Measured Depth	Vertical Depth	Reference	Offset	Highside Toolface	Offset Wellbore Centre		Between Centres	Between Ellipses	Total Uncertainty Axis	Separation Factor	Warning					
(ft)	(ft)	(ft)	(ft)	(ft)	(ft)	(°)	+N/-S (ft)	+E/-W (ft)	(ft)	(ft)								
0.0	0.0	0.0	0.0	0.0	0.0	147.29	-77.9	50.0	92.6									
100.0	100.0	100.0	100.0	0.1	0.1	147.29	-77.9	50.0	92.6	92.3	0.27	340.103						
200.0	200.0	200.0	200.0	0.3	0.3	147.29	-77.9	50.0	92.6	92.0	0.62	149.034	CC, ES					
300.0	300.0	295.7	295.7	0.5	0.5	146.67	-79.2	52.1	94.9	93.9	0.97	98.096						
400.0	400.0	391.0	390.6	0.7	0.7	144.98	-83.0	58.1	101.7	100.4	1.33	76.398						
500.0	500.0	485.3	484.2	0.8	1.0	142.64	-89.2	68.1	113.3	111.6	1.73	65.390						
600.0	600.0	578.4	575.9	1.0	1.3	69.81	-97.7	81.7	129.0	127.0	2.02	63.913						
700.0	699.8	670.2	665.4	1.2	1.7	68.67	-108.4	98.9	148.2	145.8	2.39	62.045						
800.0	799.5	760.4	752.4	1.4	2.1	68.29	-121.2	119.3	170.9	168.2	2.78	61.582	SF					
900.0	899.2	848.5	836.1	1.6	2.7	67.72	-135.7	142.5	197.9	194.8	3.17	62.462						

Anticollision Report

Company:	EnCana Oil & Gas (USA) Inc	Local Co-ordinate Reference:	Well 8514C-27 M27 496
Project:	Story Gulch	TVD Reference:	KBE @ 8121.0ft (Original Well Elev)
Reference Site:	S27-T4S-R96W (M27 496)	MD Reference:	KBE @ 8121.0ft (Original Well Elev)
Site Error:	0.0ft	North Reference:	True
Reference Well:	8514C-27 M27 496	Survey Calculation Method:	Minimum Curvature
Well Error:	0.0ft	Output errors are at	2.00 sigma
Reference Wellbore	DD	Database:	USA EDM 5000 Multi Users DB
Reference Design:	Plan #1	Offset TVD Reference:	Offset Datum

Offset Design S27-T4S-R96W (M27 496) - 8503A-28 M27 496 - DD - Plan #1													Offset Site Error:	0.0 ft
Survey Program: 0-MWD													Offset Well Error:	0.0 ft
Reference		Offset		Semi Major Axis		Highside Toolface (°)	Distance		Total Uncertainty Axis	Separation Factor	Warning			
Measured Depth (ft)	Vertical Depth (ft)	Measured Depth (ft)	Vertical Depth (ft)	Reference (ft)	Offset (ft)		Offset Wellbore Centre +N/-S (ft)	+E/-W (ft)						
0.0	0.0	0.0	0.0	0.0	0.0	151.80	-49.6	26.6	56.3					
100.0	100.0	100.0	100.0	0.1	0.1	151.80	-49.6	26.6	56.3	56.0	0.27	206.613		
200.0	200.0	200.0	200.0	0.3	0.3	151.80	-49.6	26.6	56.3	55.6	0.62	90.539		
300.0	300.0	300.0	300.0	0.5	0.5	151.80	-49.6	26.6	56.3	55.3	0.97	57.971		
400.0	400.0	400.0	400.0	0.7	0.7	151.80	-49.6	26.6	56.3	54.9	1.32	42.635		
500.0	500.0	500.0	500.0	0.8	0.8	151.80	-49.6	26.6	56.3	54.6	1.67	33.715		
600.0	600.0	600.0	600.0	1.0	1.0	82.89	-49.6	26.6	56.0	54.0	2.02	27.738		
700.0	699.8	699.8	699.8	1.2	1.2	88.25	-49.6	26.6	55.6	53.2	2.38	23.360		
724.1	723.8	723.8	723.8	1.2	1.2	90.00	-49.6	26.6	55.6	53.1	2.47	22.505 CC, ES		
800.0	799.5	799.5	799.5	1.4	1.4	96.17	-49.6	26.6	55.9	53.2	2.75	20.318		
900.0	899.2	899.2	899.2	1.6	1.5	103.96	-49.6	26.6	57.3	54.2	3.13	18.324		
1,000.0	998.9	998.9	998.9	1.8	1.7	111.26	-49.6	26.6	59.7	56.2	3.50	17.052		
1,100.0	1,098.6	1,098.6	1,098.6	2.0	1.9	117.90	-49.6	26.6	62.9	59.1	3.87	16.273		
1,200.0	1,198.3	1,198.3	1,198.3	2.2	2.1	123.82	-49.6	26.6	67.0	62.7	4.23	15.829		
1,300.0	1,298.0	1,298.0	1,298.0	2.4	2.2	129.02	-49.6	26.6	71.6	67.0	4.59	15.611		
1,400.0	1,397.7	1,397.7	1,397.7	2.7	2.4	133.56	-49.6	26.6	76.8	71.9	4.94	15.542 SF		
1,500.0	1,497.4	1,497.4	1,497.4	2.9	2.6	137.50	-49.6	26.6	82.4	77.1	5.29	15.570		
1,600.0	1,597.1	1,597.1	1,597.1	3.1	2.7	140.93	-49.6	26.6	88.3	82.7	5.64	15.662		
1,700.0	1,696.8	1,696.8	1,696.8	3.3	2.9	143.92	-49.6	26.6	94.6	88.6	5.99	15.794		
1,800.0	1,796.5	1,796.5	1,796.5	3.5	3.1	146.53	-49.6	26.6	101.0	94.7	6.33	15.949		
1,900.0	1,896.2	1,896.2	1,896.2	3.8	3.3	148.83	-49.6	26.6	107.6	101.0	6.68	16.117		
2,000.0	1,995.9	1,995.9	1,995.9	4.0	3.4	150.86	-49.6	26.6	114.4	107.4	7.02	16.292		
2,100.0	2,095.5	2,095.0	2,095.0	4.2	3.6	151.91	-50.8	27.6	121.5	114.1	7.37	16.481		
2,200.0	2,195.2	2,194.2	2,194.0	4.4	3.8	151.33	-54.6	30.8	129.1	121.3	7.74	16.677		
2,300.0	2,294.9	2,293.0	2,292.5	4.6	4.0	149.40	-61.1	36.2	137.2	129.1	8.13	16.879		
2,400.0	2,394.6	2,391.4	2,390.2	4.9	4.2	146.39	-70.0	43.7	146.2	137.7	8.55	17.108		
2,500.0	2,494.3	2,490.1	2,487.9	5.1	4.4	142.86	-80.9	52.8	156.3	147.3	8.99	17.386		
2,600.0	2,594.0	2,589.2	2,585.9	5.3	4.6	139.73	-91.9	62.0	166.9	157.4	9.44	17.681		
2,700.0	2,693.7	2,688.2	2,683.9	5.5	4.8	136.98	-102.8	71.2	177.9	168.0	9.89	17.985		
2,800.0	2,793.4	2,787.3	2,781.9	5.7	5.1	134.55	-113.8	80.3	189.3	178.9	10.35	18.293		

Anticollision Report

Company:	EnCana Oil & Gas (USA) Inc	Local Co-ordinate Reference:	Well 8514C-27 M27 496
Project:	Story Gulch	TVD Reference:	KBE @ 8121.0ft (Original Well Elev)
Reference Site:	S27-T4S-R96W (M27 496)	MD Reference:	KBE @ 8121.0ft (Original Well Elev)
Site Error:	0.0ft	North Reference:	True
Reference Well:	8514C-27 M27 496	Survey Calculation Method:	Minimum Curvature
Well Error:	0.0ft	Output errors are at	2.00 sigma
Reference Wellbore	DD	Database:	USA EDM 5000 Multi Users DB
Reference Design:	Plan #1	Offset TVD Reference:	Offset Datum

Offset Design S27-T4S-R96W (M27 496) - 8503B-28 M27 496 - DD - Plan #1													Offset Site Error:	0.0 ft
Survey Program: 0-MWD													Offset Well Error:	0.0 ft
Reference		Offset		Semi Major Axis			Distance							Warning
Measured Depth	Vertical Depth	Measured Depth	Vertical Depth	Reference	Offset	Highside Toolface	Offset Wellbore Centre		Between Centres	Between Ellipses	Total Uncertainty Axis	Separation Factor		
(ft)	(ft)	(ft)	(ft)	(ft)	(ft)	(°)	+N/-S (ft)	+E/-W (ft)	(ft)	(ft)				
0.0	0.0	0.0	0.0	0.0	0.0	152.33	-56.7	29.7	64.0					
100.0	100.0	100.0	100.0	0.1	0.1	152.33	-56.7	29.7	64.0	63.7	0.27	235.006		
200.0	200.0	200.0	200.0	0.3	0.3	152.33	-56.7	29.7	64.0	63.4	0.62	102.980	CC, ES	
300.0	300.0	297.8	297.8	0.5	0.5	152.22	-58.1	30.6	65.7	64.7	0.97	67.743		
400.0	400.0	395.3	395.2	0.7	0.7	151.92	-62.3	33.2	70.8	69.5	1.33	53.165		
500.0	500.0	492.4	491.9	0.8	0.9	151.52	-69.3	37.6	79.3	77.6	1.72	46.161		
600.0	600.0	589.6	588.4	1.0	1.1	81.25	-79.0	43.7	90.8	88.8	2.00	45.342		
700.0	699.8	688.7	686.7	1.2	1.4	83.39	-89.8	50.4	102.9	100.5	2.36	43.518		
800.0	799.5	787.8	785.0	1.4	1.7	86.46	-100.6	57.1	114.9	112.2	2.74	41.936		
900.0	899.2	886.9	883.3	1.6	1.9	89.04	-111.4	63.9	127.3	124.1	3.13	40.684		
1,000.0	998.9	986.0	981.5	1.8	2.2	91.16	-122.2	70.6	139.8	136.3	3.52	39.677		
1,100.0	1,098.6	1,085.1	1,079.8	2.0	2.5	92.93	-133.0	77.3	152.5	148.6	3.93	38.854		
1,200.0	1,198.3	1,184.2	1,178.1	2.2	2.8	94.42	-143.7	84.1	165.3	161.0	4.33	38.171		
1,300.0	1,298.0	1,283.3	1,276.4	2.4	3.1	95.70	-154.5	90.8	178.2	173.5	4.74	37.595		
1,400.0	1,397.7	1,382.4	1,374.6	2.7	3.3	96.81	-165.3	97.5	191.2	186.1	5.15	37.106	SF	

Anticollision Report

Company:	EnCana Oil & Gas (USA) Inc	Local Co-ordinate Reference:	Well 8514C-27 M27 496
Project:	Story Gulch	TVD Reference:	KBE @ 8121.0ft (Original Well Elev)
Reference Site:	S27-T4S-R96W (M27 496)	MD Reference:	KBE @ 8121.0ft (Original Well Elev)
Site Error:	0.0ft	North Reference:	True
Reference Well:	8514C-27 M27 496	Survey Calculation Method:	Minimum Curvature
Well Error:	0.0ft	Output errors are at	2.00 sigma
Reference Wellbore	DD	Database:	USA EDM 5000 Multi Users DB
Reference Design:	Plan #1	Offset TVD Reference:	Offset Datum

Offset Design												S27-T4S-R96W (M27 496) - 8503C-28 M27 496 - DD - Plan #1		Offset Site Error:		0.0 ft	
Survey Program:												0-MWD		Offset Well Error:		0.0 ft	
Reference		Offset		Semi Major Axis				Distance									
Measured Depth	Vertical Depth	Measured Depth	Vertical Depth	Reference	Offset	Highside Toolface	Offset Wellbore Centre	Between Centres	Between Ellipses	Total Uncertainty Axis	Separation Factor	Warning					
(ft)	(ft)	(ft)	(ft)	(ft)	(ft)	(°)	+N/-S (ft)	+E/-W (ft)	(ft)	(ft)							
0.0	0.0	0.0	0.0	0.0	0.0	152.11	-73.9	39.1	83.6								
100.0	100.0	100.0	100.0	0.1	0.1	152.11	-73.9	39.1	83.6	83.3	0.27	306.965					
200.0	200.0	200.0	200.0	0.3	0.3	152.11	-73.9	39.1	83.6	83.0	0.62	134.513					
233.4	233.4	233.4	233.4	0.4	0.4	152.11	-73.9	39.1	83.6	82.8	0.74	113.275 CC, ES					
300.0	300.0	298.7	298.7	0.5	0.5	152.24	-74.3	39.1	84.0	83.0	0.97	86.691					
400.0	400.0	396.1	396.0	0.7	0.7	153.26	-77.6	39.1	87.0	85.7	1.32	65.854					
500.0	500.0	493.1	492.8	0.8	0.9	155.09	-84.2	39.1	93.1	91.4	1.69	54.977					
600.0	600.0	589.5	588.7	1.0	1.1	87.50	-94.0	39.1	102.3	100.3	2.02	50.769					
700.0	699.8	684.8	683.1	1.2	1.4	92.14	-106.8	39.1	115.1	112.7	2.37	48.507					
800.0	799.5	782.8	780.0	1.4	1.6	96.73	-121.5	40.5	130.6	127.9	2.73	47.817					
900.0	899.2	881.6	877.7	1.6	1.9	99.13	-135.5	45.2	146.6	143.5	3.10	47.316					
1,000.0	998.9	980.4	975.3	1.8	2.2	100.23	-149.0	52.2	162.5	159.0	3.48	46.751					
1,100.0	1,098.6	1,079.1	1,072.8	2.0	2.5	101.12	-162.4	59.2	178.5	174.6	3.86	46.199					
1,200.0	1,198.3	1,177.8	1,170.3	2.2	2.8	101.86	-175.9	66.2	194.5	190.2	4.26	45.681 SF					

Anticollision Report

Company:	EnCana Oil & Gas (USA) Inc	Local Co-ordinate Reference:	Well 8514C-27 M27 496
Project:	Story Gulch	TVD Reference:	KBE @ 8121.0ft (Original Well Elev)
Reference Site:	S27-T4S-R96W (M27 496)	MD Reference:	KBE @ 8121.0ft (Original Well Elev)
Site Error:	0.0ft	North Reference:	True
Reference Well:	8514C-27 M27 496	Survey Calculation Method:	Minimum Curvature
Well Error:	0.0ft	Output errors are at	2.00 sigma
Reference Wellbore	DD	Database:	USA EDM 5000 Multi Users DB
Reference Design:	Plan #1	Offset TVD Reference:	Offset Datum

Offset Design												S27-T4S-R96W (M27 496) - 8503D-28 M27 496 - DD - Plan #1		Offset Site Error:		0.0 ft	
Survey Program:												0-MWD		Offset Well Error:		0.0 ft	
Reference		Offset		Semi Major Axis			Distance										
Measured Depth	Vertical Depth	Measured Depth	Vertical Depth	Reference	Offset	Highside Toolface	Offset Wellbore Centre	Between Centres	Between Ellipses	Total Uncertainty Axis	Separation Factor	Warning					
(ft)	(ft)	(ft)	(ft)	(ft)	(ft)	(°)	+N/-S (ft)	+E/-W (ft)	(ft)	(ft)							
0.0	0.0	0.0	0.0	0.0	0.0	152.02	-81.0	43.0	91.7								
100.0	100.0	100.0	100.0	0.1	0.1	152.02	-81.0	43.0	91.7	91.4	0.27	336.675					
200.0	200.0	200.0	200.0	0.3	0.3	152.02	-81.0	43.0	91.7	91.0	0.62	147.532	CC, ES				
300.0	300.0	296.9	296.9	0.5	0.5	152.12	-82.5	43.6	93.3	92.4	0.97	96.392					
400.0	400.0	393.5	393.4	0.7	0.7	152.41	-87.0	45.5	98.4	97.1	1.33	73.963					
500.0	500.0	489.8	489.3	0.8	0.9	152.82	-94.5	48.5	106.8	105.1	1.72	62.171					
600.0	600.0	585.3	584.2	1.0	1.1	83.21	-104.9	52.8	118.3	116.3	1.99	59.294					
700.0	699.8	679.9	677.7	1.2	1.4	85.49	-118.1	58.1	132.8	130.5	2.35	56.617					
800.0	799.5	776.6	772.8	1.4	1.7	88.45	-133.9	64.5	150.1	147.4	2.71	55.349					
900.0	899.2	874.7	869.4	1.6	2.1	90.94	-150.1	71.1	167.9	164.8	3.09	54.352					
1,000.0	998.9	972.9	966.0	1.8	2.4	92.95	-166.2	77.7	185.9	182.5	3.47	53.530	SF				

Anticollision Report

Company:	EnCana Oil & Gas (USA) Inc	Local Co-ordinate Reference:	Well 8514C-27 M27 496
Project:	Story Gulch	TVD Reference:	KBE @ 8121.0ft (Original Well Elev)
Reference Site:	S27-T4S-R96W (M27 496)	MD Reference:	KBE @ 8121.0ft (Original Well Elev)
Site Error:	0.0ft	North Reference:	True
Reference Well:	8514C-27 M27 496	Survey Calculation Method:	Minimum Curvature
Well Error:	0.0ft	Output errors are at	2.00 sigma
Reference Wellbore	DD	Database:	USA EDM 5000 Multi Users DB
Reference Design:	Plan #1	Offset TVD Reference:	Offset Datum

Offset Design												S27-T4S-R96W (M27 496) - 8507E-27 M27 496 - DD - Plan #1		Offset Site Error:		0.0 ft	
Survey Program: 0-MWD														Offset Well Error:		0.0 ft	
Reference		Offset		Semi Major Axis			Distance										
Measured Depth	Vertical Depth	Measured Depth	Vertical Depth	Reference	Offset	Highside Toolface	Offset Wellbore Centre		Between Centres	Between Ellipses	Total Uncertainty Axis	Separation Factor	Warning				
(ft)	(ft)	(ft)	(ft)	(ft)	(ft)	(°)	+N/-S (ft)	+E/-W (ft)	(ft)	(ft)							
0.0	0.0	0.0	0.0	0.0	0.0	-27.85	99.2	-52.4	112.1								
100.0	100.0	100.0	100.0	0.1	0.1	-27.85	99.2	-52.4	112.1	111.9	0.27	411.891					
200.0	200.0	200.0	200.0	0.3	0.3	-27.85	99.2	-52.4	112.1	111.5	0.62	180.492	CC, ES				
300.0	300.0	299.0	298.9	0.5	0.5	-26.56	100.7	-50.3	112.6	111.6	0.97	115.978					
400.0	400.0	397.4	397.1	0.7	0.7	-22.79	105.3	-44.2	114.2	112.9	1.33	85.777					
500.0	500.0	494.9	493.7	0.8	1.0	-16.88	112.8	-34.2	118.1	116.3	1.73	68.362					
600.0	600.0	591.1	588.3	1.0	1.3	-80.74	123.2	-20.5	125.1	122.8	2.28	54.886					
700.0	699.8	686.2	680.9	1.2	1.8	-74.36	136.2	-3.2	135.5	132.8	2.79	48.510					
800.0	799.5	779.9	771.0	1.4	2.3	-68.55	151.7	17.4	149.6	146.3	3.33	44.975					
900.0	899.2	871.5	857.7	1.6	2.8	-62.80	169.4	40.9	168.4	164.5	3.84	43.823	SF				
1,000.0	998.9	960.7	940.7	1.8	3.4	-57.45	189.1	67.0	192.1	187.8	4.32	44.466					

Anticollision Report

Company:	EnCana Oil & Gas (USA) Inc	Local Co-ordinate Reference:	Well 8514C-27 M27 496
Project:	Story Gulch	TVD Reference:	KBE @ 8121.0ft (Original Well Elev)
Reference Site:	S27-T4S-R96W (M27 496)	MD Reference:	KBE @ 8121.0ft (Original Well Elev)
Site Error:	0.0ft	North Reference:	True
Reference Well:	8514C-27 M27 496	Survey Calculation Method:	Minimum Curvature
Well Error:	0.0ft	Output errors are at	2.00 sigma
Reference Wellbore	DD	Database:	USA EDM 5000 Multi Users DB
Reference Design:	Plan #1	Offset TVD Reference:	Offset Datum

Offset Design													S27-T4S-R96W (M27 496) - 8507F-27 M27 496 - DD - Plan #1		Offset Site Error:		0.0 ft
Survey Program:													0-MWD		Offset Well Error:		0.0 ft
Reference		Offset		Semi Major Axis			Distance										
Measured Depth	Vertical Depth	Measured Depth	Vertical Depth	Reference	Offset	Highside Toolface	Offset Wellbore Centre		Between Centres	Between Ellipses	Total Uncertainty Axis	Separation Factor	Warning				
(ft)	(ft)	(ft)	(ft)	(ft)	(ft)	(°)	+N/-S (ft)	+E/-W (ft)	(ft)	(ft)							
0.0	0.0	0.0	0.0	0.0	0.0	-23.93	102.2	-45.4	111.8								
100.0	100.0	100.0	100.0	0.1	0.1	-23.93	102.2	-45.4	111.8	111.5	0.27	410.618					
200.0	200.0	200.0	200.0	0.3	0.3	-23.93	102.2	-45.4	111.8	111.2	0.62	179.934	CC, ES				
300.0	300.0	298.8	298.8	0.5	0.5	-22.65	103.6	-43.2	112.3	111.3	0.97	115.694					
400.0	400.0	397.2	396.8	0.7	0.7	-18.91	107.9	-37.0	114.1	112.8	1.33	85.659					
500.0	500.0	494.5	493.3	0.8	1.0	-13.06	115.0	-26.7	118.3	116.5	1.73	68.365					
600.0	600.0	590.5	587.8	1.0	1.3	-77.02	124.7	-12.6	125.6	123.3	2.27	55.254					
700.0	699.8	685.5	680.3	1.2	1.8	-70.75	137.0	5.2	136.1	133.3	2.78	48.914					
800.0	799.5	779.1	770.3	1.4	2.2	-65.03	151.6	26.4	150.1	146.8	3.31	45.381					
900.0	899.2	870.7	857.0	1.6	2.8	-59.38	168.2	50.7	168.8	165.0	3.82	44.248	SF				
1,000.0	998.9	959.8	939.9	1.8	3.4	-54.11	186.7	77.6	192.6	188.3	4.29	44.921					

Anticollision Report

Company:	EnCana Oil & Gas (USA) Inc	Local Co-ordinate Reference:	Well 8514C-27 M27 496
Project:	Story Gulch	TVD Reference:	KBE @ 8121.0ft (Original Well Elev)
Reference Site:	S27-T4S-R96W (M27 496)	MD Reference:	KBE @ 8121.0ft (Original Well Elev)
Site Error:	0.0ft	North Reference:	True
Reference Well:	8514C-27 M27 496	Survey Calculation Method:	Minimum Curvature
Well Error:	0.0ft	Output errors are at	2.00 sigma
Reference Wellbore	DD	Database:	USA EDM 5000 Multi Users DB
Reference Design:	Plan #1	Offset TVD Reference:	Offset Datum

Offset Design													S27-T4S-R96W (M27 496) - 8510A-27 M27 496 - DD - Plan #1		Offset Site Error:		0.0 ft
Survey Program:													0-MWD		Offset Well Error:		0.0 ft
Reference		Offset		Semi Major Axis			Distance										
Measured Depth	Vertical Depth	Measured Depth	Vertical Depth	Reference	Offset	Highside Toolface	Offset Wellbore Centre		Between Centres	Between Ellipses	Total Uncertainty Axis	Separation Factor	Warning				
Depth (ft)	Depth (ft)	Depth (ft)	Depth (ft)	(ft)	(ft)	(°)	+N/-S (ft)	+E/-W (ft)	(ft)	(ft)							
0.0	0.0	0.0	0.0	0.0	0.0	-23.55	95.1	-41.4	103.7								
100.0	100.0	100.0	100.0	0.1	0.1	-23.55	95.1	-41.4	103.7	103.5	0.27	381.038					
200.0	200.0	200.0	200.0	0.3	0.3	-23.55	95.1	-41.4	103.7	103.1	0.62	166.972	CC, ES				
300.0	300.0	299.1	299.1	0.5	0.5	-22.15	96.5	-39.3	104.2	103.2	0.97	107.280					
400.0	400.0	397.7	397.4	0.7	0.7	-18.06	100.5	-32.8	105.8	104.4	1.33	79.396					
500.0	500.0	495.2	494.1	0.8	1.0	-11.67	107.2	-22.1	109.6	107.9	1.73	63.401					
600.0	600.0	591.6	588.8	1.0	1.3	-75.03	116.3	-7.5	116.6	114.3	2.28	51.191					
700.0	699.8	686.8	681.6	1.2	1.8	-68.22	127.8	10.9	126.9	124.1	2.79	45.537					
800.0	799.5	780.7	771.8	1.4	2.3	-62.05	141.5	32.8	140.7	137.4	3.31	42.566					
900.0	899.2	872.5	858.7	1.6	2.8	-56.02	157.2	57.9	159.4	155.6	3.80	41.931	SF				
1,000.0	998.9	961.8	941.8	1.8	3.5	-50.50	174.6	85.7	183.3	179.0	4.26	43.051					

Anticollision Report

Company:	EnCana Oil & Gas (USA) Inc	Local Co-ordinate Reference:	Well 8514C-27 M27 496
Project:	Story Gulch	TVD Reference:	KBE @ 8121.0ft (Original Well Elev)
Reference Site:	S27-T4S-R96W (M27 496)	MD Reference:	KBE @ 8121.0ft (Original Well Elev)
Site Error:	0.0ft	North Reference:	True
Reference Well:	8514C-27 M27 496	Survey Calculation Method:	Minimum Curvature
Well Error:	0.0ft	Output errors are at	2.00 sigma
Reference Wellbore	DD	Database:	USA EDM 5000 Multi Users DB
Reference Design:	Plan #1	Offset TVD Reference:	Offset Datum

Offset Design												S27-T4S-R96W (M27 496) - 8510B-27 M27 496 - DD - Plan #1		Offset Site Error:		0.0 ft	
Survey Program:												0-MWD		Offset Well Error:		0.0 ft	
Reference		Offset		Semi Major Axis				Distance						Warning			
Measured Depth	Vertical Depth	Measured Depth	Vertical Depth	Reference	Offset	Highside Toolface	Offset Wellbore Centre	Between Centres	Between Ellipses	Total Uncertainty Axis	Separation Factor						
(ft)	(ft)	(ft)	(ft)	(ft)	(ft)	(°)	+N/-S (ft)	+E/-W (ft)	(ft)	(ft)							
0.0	0.0	0.0	0.0	0.0	0.0	-27.77	92.1	-48.5	104.1								
100.0	100.0	100.0	100.0	0.1	0.1	-27.77	92.1	-48.5	104.1	103.8	0.27	382.182					
200.0	200.0	200.0	200.0	0.3	0.3	-27.77	92.1	-48.5	104.1	103.4	0.62	167.473	CC				
300.0	300.0	299.8	299.7	0.5	0.5	-26.34	93.3	-46.2	104.2	103.2	0.97	107.237	ES				
400.0	400.0	399.0	398.6	0.7	0.7	-22.10	97.1	-39.4	104.8	103.5	1.33	78.889					
500.0	500.0	497.2	496.0	0.8	1.0	-15.34	103.3	-28.3	107.2	105.5	1.72	62.511					
600.0	600.0	594.1	591.3	1.0	1.3	-78.08	111.8	-13.1	112.6	110.3	2.31	48.707					
700.0	699.8	689.9	684.6	1.2	1.8	-70.48	122.6	6.1	121.2	118.4	2.84	42.639					
800.0	799.5	784.4	775.3	1.4	2.3	-63.41	135.3	28.9	133.6	130.2	3.39	39.455					
900.0	899.2	876.7	862.6	1.6	2.9	-56.47	149.9	55.1	150.9	147.1	3.90	38.738	SF				
1,000.0	998.9	966.5	946.1	1.8	3.5	-50.13	166.1	84.0	173.8	169.4	4.36	39.881					

Anticollision Report

Company:	EnCana Oil & Gas (USA) Inc	Local Co-ordinate Reference:	Well 8514C-27 M27 496
Project:	Story Gulch	TVD Reference:	KBE @ 8121.0ft (Original Well Elev)
Reference Site:	S27-T4S-R96W (M27 496)	MD Reference:	KBE @ 8121.0ft (Original Well Elev)
Site Error:	0.0ft	North Reference:	True
Reference Well:	8514C-27 M27 496	Survey Calculation Method:	Minimum Curvature
Well Error:	0.0ft	Output errors are at	2.00 sigma
Reference Wellbore	DD	Database:	USA EDM 5000 Multi Users DB
Reference Design:	Plan #1	Offset TVD Reference:	Offset Datum

Offset Design S27-T4S-R96W (M27 496) - 8510C-27 M27 496 - DD - Plan #1													Offset Site Error:	0.0 ft
Survey Program: 0-MWD													Offset Well Error:	0.0 ft
Reference		Offset		Semi Major Axis			Distance						Warning	
Measured Depth (ft)	Vertical Depth (ft)	Measured Depth (ft)	Vertical Depth (ft)	Reference (ft)	Offset (ft)	Highside Toolface (°)	Offset Wellbore Centre +N/-S (ft)	+E/-W (ft)	Between Centres (ft)	Between Ellipses (ft)	Total Uncertainty Axis	Separation Factor		
0.0	0.0	0.0	0.0	0.0	0.0	-22.22	70.8	-28.9	76.5					
100.0	100.0	100.0	100.0	0.1	0.1	-22.22	70.8	-28.9	76.5	76.2	0.27	280.992		
200.0	200.0	200.0	200.0	0.3	0.3	-22.22	70.8	-28.9	76.5	75.9	0.62	123.131 CC		
300.0	300.0	299.6	299.6	0.5	0.5	-20.29	72.0	-26.6	76.8	75.8	0.97	79.020 ES		
400.0	400.0	398.7	398.3	0.7	0.7	-14.64	75.5	-19.7	78.0	76.7	1.33	58.557		
500.0	500.0	496.6	495.5	0.8	1.0	-5.91	81.2	-8.4	81.7	80.0	1.73	47.152		
600.0	600.0	593.4	590.6	1.0	1.3	-66.94	89.0	7.1	89.1	86.8	2.27	39.209		
700.0	699.8	689.1	683.8	1.2	1.8	-58.41	98.8	26.7	99.9	97.2	2.75	36.302		
800.0	799.5	783.4	774.4	1.4	2.3	-51.09	110.6	50.0	114.5	111.3	3.22	35.526 SF		
900.0	899.2	875.6	861.6	1.6	2.9	-44.41	124.0	76.7	134.4	130.8	3.66	36.760		
1,000.0	998.9	965.4	945.0	1.8	3.5	-38.71	138.9	106.2	159.7	155.7	4.05	39.469		
1,100.0	1,098.6	1,053.1	1,025.0	2.0	4.2	-34.00	155.1	138.4	190.2	185.8	4.39	43.303		

Anticollision Report

Company:	EnCana Oil & Gas (USA) Inc	Local Co-ordinate Reference:	Well 8514C-27 M27 496
Project:	Story Gulch	TVD Reference:	KBE @ 8121.0ft (Original Well Elev)
Reference Site:	S27-T4S-R96W (M27 496)	MD Reference:	KBE @ 8121.0ft (Original Well Elev)
Site Error:	0.0ft	North Reference:	True
Reference Well:	8514C-27 M27 496	Survey Calculation Method:	Minimum Curvature
Well Error:	0.0ft	Output errors are at	2.00 sigma
Reference Wellbore	DD	Database:	USA EDM 5000 Multi Users DB
Reference Design:	Plan #1	Offset TVD Reference:	Offset Datum

Offset Design S27-T4S-R96W (M27 496) - 8510D-27 M27 496 - DD - Plan #1													Offset Site Error: 0.0 ft	
Survey Program: 0-MWD													Offset Well Error: 0.0 ft	
Reference		Offset		Semi Major Axis			Distance							
Measured Depth	Vertical Depth	Measured Depth	Vertical Depth	Reference	Offset	Highside Toolface	Offset Wellbore Centre		Between Centres	Between Ellipses	Total Uncertainty Axis	Separation Factor	Warning	
(ft)	(ft)	(ft)	(ft)	(ft)	(ft)	(°)	+N/-S (ft)	+E/-W (ft)	(ft)	(ft)				
0.0	0.0	0.0	0.0	0.0	0.0	-28.31	66.8	-36.0	75.8					
100.0	100.0	100.0	100.0	0.1	0.1	-28.31	66.8	-36.0	75.8	75.6	0.27	278.578		
200.0	200.0	200.0	200.0	0.3	0.3	-28.31	66.8	-36.0	75.8	75.2	0.62	122.073		
300.0	300.0	300.2	300.2	0.5	0.5	-26.33	67.8	-33.6	75.7	74.7	0.97	77.895		
354.0	354.0	354.2	354.0	0.6	0.6	-23.61	69.3	-30.3	75.6	74.4	1.16	64.986 CC		
400.0	400.0	400.0	399.6	0.7	0.7	-20.39	71.0	-26.4	75.7	74.4	1.33	57.018 ES		
500.0	500.0	498.5	497.3	0.8	1.0	-10.89	76.1	-14.6	77.5	75.8	1.72	45.213		
600.0	600.0	595.9	593.1	1.0	1.3	-70.63	83.1	1.5	82.9	80.6	2.31	35.865		
700.0	699.8	692.1	686.7	1.2	1.8	-60.60	92.0	21.8	91.9	89.1	2.81	32.674		
800.0	799.5	787.0	777.8	1.4	2.3	-51.80	102.6	46.0	105.2	101.9	3.30	31.866 SF		
900.0	899.2	879.7	865.4	1.6	2.9	-43.83	114.7	73.7	124.1	120.3	3.73	33.220		
1,000.0	998.9	969.9	949.2	1.8	3.5	-37.14	128.1	104.3	148.7	144.6	4.11	36.150		
1,100.0	1,098.6	1,059.9	1,031.3	2.0	4.2	-31.69	142.9	138.2	178.7	174.3	4.45	40.199		

Anticollision Report

Company:	EnCana Oil & Gas (USA) Inc	Local Co-ordinate Reference:	Well 8514C-27 M27 496
Project:	Story Gulch	TVD Reference:	KBE @ 8121.0ft (Original Well Elev)
Reference Site:	S27-T4S-R96W (M27 496)	MD Reference:	KBE @ 8121.0ft (Original Well Elev)
Site Error:	0.0ft	North Reference:	True
Reference Well:	8514C-27 M27 496	Survey Calculation Method:	Minimum Curvature
Well Error:	0.0ft	Output errors are at	2.00 sigma
Reference Wellbore	DD	Database:	USA EDM 5000 Multi Users DB
Reference Design:	Plan #1	Offset TVD Reference:	Offset Datum

Offset Design S27-T4S-R96W (M27 496) - 8510E-27 M27 496 - DD - Plan #1													Offset Site Error:	0.0 ft
Survey Program: 0-MWD													Offset Well Error:	0.0 ft
Reference		Offset		Semi Major Axis			Distance							Warning
Measured Depth	Vertical Depth	Measured Depth	Vertical Depth	Reference	Offset	Highside Toolface	Offset Wellbore Centre		Between Centres	Between Ellipses	Total Uncertainty	Separation Factor		
(ft)	(ft)	(ft)	(ft)	(ft)	(ft)	(°)	+N/-S (ft)	+E/-W (ft)	(ft)	(ft)	Axis			
0.0	0.0	0.0	0.0	0.0	0.0	-18.96	45.5	-15.6	48.1					
100.0	100.0	100.0	100.0	0.1	0.1	-18.96	45.5	-15.6	48.1	47.9	0.27	176.822		
200.0	200.0	200.0	200.0	0.3	0.3	-18.96	45.5	-15.6	48.1	47.5	0.62	77.484	CC	
300.0	300.0	299.8	299.8	0.5	0.5	-15.86	46.5	-13.2	48.3	47.3	0.97	49.710	ES	
400.0	400.0	399.1	398.8	0.7	0.7	-6.89	49.2	-5.9	49.6	48.2	1.33	37.148		
500.0	500.0	497.3	496.1	0.8	1.0	6.33	53.7	6.0	54.2	52.4	1.75	30.922		
600.0	600.0	594.3	591.5	1.0	1.3	-51.30	59.9	22.3	63.4	61.2	2.22	28.520	SF	
700.0	699.8	690.2	684.8	1.2	1.8	-41.20	67.7	42.9	76.3	73.7	2.64	28.933		
800.0	799.5	784.7	775.6	1.4	2.3	-33.53	77.0	67.4	93.0	89.9	3.03	30.709		
900.0	899.2	877.1	863.0	1.6	2.9	-27.31	87.7	95.4	115.1	111.7	3.38	34.002		
1,000.0	998.9	967.1	946.6	1.8	3.5	-22.48	99.4	126.5	142.5	138.7	3.72	38.327		
1,100.0	1,098.6	1,058.6	1,030.2	2.0	4.2	-18.74	112.6	161.1	174.1	170.1	4.03	43.181		

Anticollision Report

Company:	EnCana Oil & Gas (USA) Inc	Local Co-ordinate Reference:	Well 8514C-27 M27 496
Project:	Story Gulch	TVD Reference:	KBE @ 8121.0ft (Original Well Elev)
Reference Site:	S27-T4S-R96W (M27 496)	MD Reference:	KBE @ 8121.0ft (Original Well Elev)
Site Error:	0.0ft	North Reference:	True
Reference Well:	8514C-27 M27 496	Survey Calculation Method:	Minimum Curvature
Well Error:	0.0ft	Output errors are at	2.00 sigma
Reference Wellbore	DD	Database:	USA EDM 5000 Multi Users DB
Reference Design:	Plan #1	Offset TVD Reference:	Offset Datum

Offset Design S27-T4S-R96W (M27 496) - 8510G-27 M27 496 - DD - Plan #1												Offset Site Error: 0.0 ft	
Survey Program: 0-MWD												Offset Well Error: 0.0 ft	
Reference		Offset		Semi Major Axis			Distance						Warning
Measured Depth (ft)	Vertical Depth (ft)	Measured Depth (ft)	Vertical Depth (ft)	Reference (ft)	Offset (ft)	Highside Toolface (°)	Offset Wellbore Centre +N/-S (ft)	+E/-W (ft)	Between Centres (ft)	Between Ellipses (ft)	Total Uncertainty Axis	Separation Factor	
0.0	0.0	0.0	0.0	0.0	0.0	-28.09	42.5	-22.7	48.2				
100.0	100.0	100.0	100.0	0.1	0.1	-28.09	42.5	-22.7	48.2	47.9	0.27	176.916	
200.0	200.0	200.0	200.0	0.3	0.3	-28.09	42.5	-22.7	48.2	47.5	0.62	77.525	
300.0	300.0	300.5	300.5	0.5	0.5	-25.00	43.1	-20.1	47.6	46.6	0.97	48.988	
400.0	400.0	400.5	400.1	0.7	0.7	-15.48	45.0	-12.5	46.7	45.4	1.33	35.242	
411.8	411.8	412.3	411.8	0.7	0.7	-13.93	45.3	-11.2	46.7	45.3	1.37	34.109 CC, ES	
500.0	500.0	499.4	498.2	0.8	1.0	0.06	48.1	0.1	48.2	46.4	1.72	27.999	
600.0	600.0	597.0	594.2	1.0	1.4	-53.78	52.4	17.2	54.4	52.1	2.28	23.850 SF	
700.0	699.8	693.5	688.0	1.2	1.8	-40.06	57.8	38.9	65.2	62.5	2.71	24.092	
800.0	799.5	788.6	779.3	1.4	2.3	-29.59	64.2	64.7	80.6	77.6	3.09	26.127	
900.0	899.2	881.5	867.1	1.6	2.9	-21.49	71.5	94.1	102.1	98.7	3.42	29.889	
1,000.0	998.9	971.9	951.1	1.8	3.5	-15.57	79.5	126.7	129.3	125.6	3.72	34.789	
1,100.0	1,098.6	1,066.0	1,037.4	2.0	4.2	-11.23	88.5	162.9	160.0	156.0	4.01	39.851	
1,200.0	1,198.3	1,160.6	1,124.3	2.2	4.9	-8.26	97.6	199.4	191.3	186.9	4.32	44.296	

Anticollision Report

Company:	EnCana Oil & Gas (USA) Inc	Local Co-ordinate Reference:	Well 8514C-27 M27 496
Project:	Story Gulch	TVD Reference:	KBE @ 8121.0ft (Original Well Elev)
Reference Site:	S27-T4S-R96W (M27 496)	MD Reference:	KBE @ 8121.0ft (Original Well Elev)
Site Error:	0.0ft	North Reference:	True
Reference Well:	8514C-27 M27 496	Survey Calculation Method:	Minimum Curvature
Well Error:	0.0ft	Output errors are at	2.00 sigma
Reference Wellbore	DD	Database:	USA EDM 5000 Multi Users DB
Reference Design:	Plan #1	Offset TVD Reference:	Offset Datum

Offset Design S27-T4S-R96W (M27 496) - 8511C-27 M27 496 - DD - Plan #1												Offset Site Error:	0.0 ft
Survey Program: 0-MWD												Offset Well Error:	0.0 ft
Reference		Offset		Semi Major Axis			Distance						Warning
Measured Depth	Vertical Depth	Measured Depth	Vertical Depth	Reference	Offset	Highside Toolface	Offset Wellbore Centre		Between Centres	Between Ellipses	Total Uncertainty	Separation Factor	
(ft)	(ft)	(ft)	(ft)	(ft)	(ft)	(°)	+N/-S (ft)	+E/-W (ft)	(ft)	(ft)	Axis		
0.0	0.0	0.0	0.0	0.0	0.0	-27.90	73.9	-39.1	83.6				
100.0	100.0	100.0	100.0	0.1	0.1	-27.90	73.9	-39.1	83.6	83.3	0.27	306.936	
200.0	200.0	200.0	200.0	0.3	0.3	-27.90	73.9	-39.1	83.6	82.9	0.62	134.500	CC, ES
300.0	300.0	298.0	298.0	0.5	0.5	-27.05	75.4	-38.5	84.7	83.8	0.97	87.356	
400.0	400.0	395.9	395.7	0.7	0.7	-24.67	80.2	-36.8	88.3	87.0	1.33	66.301	
500.0	500.0	493.2	492.7	0.8	0.9	-21.13	88.0	-34.0	94.6	92.9	1.72	54.984	
600.0	600.0	590.0	588.8	1.0	1.2	-88.35	98.8	-30.1	103.8	101.7	2.06	50.280	
700.0	699.8	686.3	683.9	1.2	1.5	-86.14	112.6	-25.1	115.8	113.3	2.46	47.039	
800.0	799.5	781.8	777.8	1.4	1.8	-84.75	129.2	-19.0	130.4	127.6	2.88	45.234	
900.0	899.2	876.6	870.3	1.6	2.2	-83.06	148.6	-12.0	147.9	144.6	3.31	44.622	
1,000.0	998.9	974.7	965.8	1.8	2.6	-81.41	170.0	-4.2	166.6	162.9	3.75	44.413	
1,100.0	1,098.6	1,072.8	1,061.2	2.0	3.0	-80.09	191.4	3.5	185.5	181.3	4.19	44.285	SF

Anticollision Report

Company:	EnCana Oil & Gas (USA) Inc	Local Co-ordinate Reference:	Well 8514C-27 M27 496
Project:	Story Gulch	TVD Reference:	KBE @ 8121.0ft (Original Well Elev)
Reference Site:	S27-T4S-R96W (M27 496)	MD Reference:	KBE @ 8121.0ft (Original Well Elev)
Site Error:	0.0ft	North Reference:	True
Reference Well:	8514C-27 M27 496	Survey Calculation Method:	Minimum Curvature
Well Error:	0.0ft	Output errors are at	2.00 sigma
Reference Wellbore	DD	Database:	USA EDM 5000 Multi Users DB
Reference Design:	Plan #1	Offset TVD Reference:	Offset Datum

Offset Design S27-T4S-R96W (M27 496) - 8511D-27 M27 496 - DD - Plan #1													Offset Site Error: 0.0 ft	
Survey Program: 0-MWD													Offset Well Error: 0.0 ft	
Reference		Offset		Semi Major Axis			Distance							Warning
Measured Depth (ft)	Vertical Depth (ft)	Measured Depth (ft)	Vertical Depth (ft)	Reference (ft)	Offset (ft)	Highside Toolface (°)	Offset Wellbore Centre		Between Centres (ft)	Between Ellipses (ft)	Total Uncertainty Axis	Separation Factor		
							+N/-S (ft)	+E/-W (ft)						
0.0	0.0	0.0	0.0	0.0	0.0	-22.37	77.9	-32.1	84.3					
100.0	100.0	100.0	100.0	0.1	0.1	-22.37	77.9	-32.1	84.3	84.0	0.27	309.434		
200.0	200.0	200.0	200.0	0.3	0.3	-22.37	77.9	-32.1	84.3	83.6	0.62	135.595 CC, ES		
300.0	300.0	297.9	297.9	0.5	0.5	-21.58	79.5	-31.4	85.5	84.5	0.97	88.129		
400.0	400.0	395.6	395.5	0.7	0.7	-19.35	84.1	-29.5	89.2	87.9	1.33	66.976		
500.0	500.0	492.8	492.3	0.8	0.9	-16.04	91.7	-26.4	95.8	94.0	1.72	55.634		
600.0	600.0	589.5	588.3	1.0	1.1	-83.53	102.4	-22.0	105.1	103.1	2.06	51.118		
700.0	699.8	685.7	683.4	1.2	1.4	-81.58	115.9	-16.4	117.1	114.6	2.45	47.777		
800.0	799.5	781.1	777.2	1.4	1.8	-80.42	132.2	-9.7	131.4	128.6	2.87	45.880		
900.0	899.2	879.6	873.5	1.6	2.2	-79.18	150.7	-2.1	147.4	144.1	3.29	44.781		
1,000.0	998.9	978.2	970.1	1.8	2.5	-78.17	169.3	5.6	163.5	159.8	3.72	43.918		
1,100.0	1,098.6	1,076.9	1,066.7	2.0	2.9	-77.35	187.9	13.2	179.6	175.4	4.15	43.231		
1,200.0	1,198.3	1,175.6	1,163.4	2.2	3.3	-76.66	206.4	20.8	195.7	191.1	4.59	42.676 SF		

Anticollision Report

Company:	EnCana Oil & Gas (USA) Inc	Local Co-ordinate Reference:	Well 8514C-27 M27 496
Project:	Story Gulch	TVD Reference:	KBE @ 8121.0ft (Original Well Elev)
Reference Site:	S27-T4S-R96W (M27 496)	MD Reference:	KBE @ 8121.0ft (Original Well Elev)
Site Error:	0.0ft	North Reference:	True
Reference Well:	8514C-27 M27 496	Survey Calculation Method:	Minimum Curvature
Well Error:	0.0ft	Output errors are at	2.00 sigma
Reference Wellbore	DD	Database:	USA EDM 5000 Multi Users DB
Reference Design:	Plan #1	Offset TVD Reference:	Offset Datum

Offset Design S27-T4S-R96W (M27 496) - 8511G-27 M27 496 - DD - Plan #1													Offset Site Error:	0.0 ft
Survey Program: 0-MWD													Offset Well Error:	0.0 ft
Reference		Offset		Semi Major Axis			Distance						Warning	
Measured Depth (ft)	Vertical Depth (ft)	Measured Depth (ft)	Vertical Depth (ft)	Reference (ft)	Offset (ft)	Highside Toolface (°)	Offset Wellbore Centre +N/-S (ft)	+E/-W (ft)	Between Centres (ft)	Between Ellipses (ft)	Total Uncertainty Axis	Separation Factor		
0.0	0.0	0.0	0.0	0.0	0.0	-20.38	52.6	-19.5	56.1					
100.0	100.0	100.0	100.0	0.1	0.1	-20.38	52.6	-19.5	56.1	55.9	0.27	206.154		
200.0	200.0	200.0	200.0	0.3	0.3	-20.38	52.6	-19.5	56.1	55.5	0.62	90.337 CC, ES		
300.0	300.0	298.9	298.9	0.5	0.5	-18.96	54.0	-18.5	57.1	56.1	0.97	58.811		
400.0	400.0	397.5	397.4	0.7	0.7	-14.97	58.1	-15.5	60.2	58.9	1.33	45.180		
500.0	500.0	495.7	495.2	0.8	0.9	-9.25	64.9	-10.6	66.0	64.3	1.72	38.322		
600.0	600.0	594.0	592.8	1.0	1.2	-74.66	74.4	-3.7	74.3	72.3	2.08	35.823		
700.0	699.8	693.6	691.5	1.2	1.4	-72.33	84.6	3.7	82.7	80.3	2.47	33.559		
800.0	799.5	793.3	790.4	1.4	1.7	-72.03	94.8	11.2	90.4	87.6	2.87	31.480		
900.0	899.2	893.0	889.3	1.6	2.0	-71.86	105.0	18.6	98.1	94.8	3.29	29.841		
1,000.0	998.9	992.7	988.2	1.8	2.2	-71.72	115.3	26.0	105.8	102.1	3.71	28.534		
1,100.0	1,098.6	1,092.4	1,087.1	2.0	2.5	-71.59	125.5	33.5	113.5	109.3	4.13	27.473		
1,200.0	1,198.3	1,192.1	1,186.0	2.2	2.8	-71.49	135.7	40.9	121.1	116.6	4.55	26.596		
1,300.0	1,298.0	1,291.8	1,284.9	2.4	3.1	-71.39	145.9	48.4	128.8	123.8	4.98	25.861		
1,400.0	1,397.7	1,391.5	1,383.8	2.7	3.3	-71.31	156.2	55.8	136.5	131.1	5.41	25.236		
1,500.0	1,497.4	1,491.2	1,482.7	2.9	3.6	-71.23	166.4	63.3	144.2	138.3	5.84	24.699		
1,600.0	1,597.1	1,590.9	1,581.6	3.1	3.9	-71.16	176.6	70.7	151.8	145.6	6.27	24.233		
1,700.0	1,696.8	1,690.6	1,680.5	3.3	4.2	-71.10	186.9	78.1	159.5	152.8	6.70	23.824		
1,800.0	1,796.5	1,790.3	1,779.4	3.5	4.5	-71.05	197.1	85.6	167.2	160.1	7.13	23.464		
1,900.0	1,896.2	1,890.0	1,878.3	3.8	4.7	-71.00	207.3	93.0	174.9	167.3	7.56	23.143		
2,000.0	1,995.9	1,989.7	1,977.2	4.0	5.0	-70.95	217.5	100.5	182.5	174.5	7.99	22.856		
2,100.0	2,095.5	2,089.4	2,076.1	4.2	5.3	-70.91	227.8	107.9	190.2	181.8	8.42	22.598		
2,200.0	2,195.2	2,189.1	2,175.0	4.4	5.6	-70.87	238.0	115.4	197.9	189.0	8.85	22.364 SF		

Anticollision Report

Company:	EnCana Oil & Gas (USA) Inc	Local Co-ordinate Reference:	Well 8514C-27 M27 496
Project:	Story Gulch	TVD Reference:	KBE @ 8121.0ft (Original Well Elev)
Reference Site:	S27-T4S-R96W (M27 496)	MD Reference:	KBE @ 8121.0ft (Original Well Elev)
Site Error:	0.0ft	North Reference:	True
Reference Well:	8514C-27 M27 496	Survey Calculation Method:	Minimum Curvature
Well Error:	0.0ft	Output errors are at	2.00 sigma
Reference Wellbore	DD	Database:	USA EDM 5000 Multi Users DB
Reference Design:	Plan #1	Offset TVD Reference:	Offset Datum

Offset Design S27-T4S-R96W (M27 496) - 8512E-27 M27 496 - DD - Plan #1													Offset Site Error:	0.0 ft
Survey Program: 0-MWD													Offset Well Error:	0.0 ft
Reference		Offset		Semi Major Axis			Distance						Warning	
Measured Depth (ft)	Vertical Depth (ft)	Measured Depth (ft)	Vertical Depth (ft)	Reference (ft)	Offset (ft)	Highside Toolface (°)	Offset Wellbore Centre +N/-S (ft)	+E/-W (ft)	Between Centres (ft)	Between Ellipses (ft)	Total Uncertainty Axis	Separation Factor		
0.0	0.0	0.0	0.0	0.0	0.0	-28.20	49.6	-26.6	56.3					
100.0	100.0	100.0	100.0	0.1	0.1	-28.20	49.6	-26.6	56.3	56.0	0.27	206.613		
200.0	200.0	200.0	200.0	0.3	0.3	-28.20	49.6	-26.6	56.3	55.6	0.62	90.538		
300.0	300.0	300.0	300.0	0.5	0.5	-28.20	49.6	-26.6	56.3	55.3	0.97	57.971		
400.0	400.0	400.0	400.0	0.7	0.7	-28.20	49.6	-26.6	56.3	54.9	1.32	42.635		
500.0	500.0	500.0	500.0	0.8	0.8	-28.20	49.6	-26.6	56.3	54.6	1.67	33.715		
600.0	600.0	600.9	600.9	1.0	1.0	-100.45	48.6	-25.8	55.3	53.3	2.02	27.372		
684.1	684.0	684.9	684.9	1.2	1.2	-104.52	47.5	-25.0	54.9	52.5	2.32	23.612 CC		
700.0	699.8	700.7	700.7	1.2	1.2	-105.57	47.3	-24.8	54.9	52.5	2.38	23.054 ES		
800.0	799.5	800.5	800.4	1.4	1.4	-113.10	46.1	-23.8	55.8	53.1	2.75	20.321		
900.0	899.2	900.2	900.1	1.6	1.5	-120.36	44.8	-22.8	57.8	54.6	3.11	18.548		
1,000.0	998.9	999.9	999.9	1.8	1.7	-127.04	43.6	-21.8	60.6	57.1	3.48	17.413		
1,100.0	1,098.6	1,099.6	1,099.6	2.0	1.9	-133.07	42.3	-20.8	64.1	60.3	3.84	16.709		
1,200.0	1,198.3	1,199.4	1,199.3	2.2	2.1	-138.42	41.0	-19.8	68.3	64.1	4.19	16.293		
1,300.0	1,298.0	1,299.1	1,299.0	2.4	2.2	-143.11	39.8	-18.8	73.0	68.4	4.54	16.071		
1,400.0	1,397.7	1,398.8	1,398.7	2.7	2.4	-147.22	38.5	-17.8	78.1	73.2	4.89	15.977		
1,500.0	1,497.4	1,498.5	1,498.4	2.9	2.6	-150.81	37.3	-16.7	83.6	78.3	5.23	15.967 SF		
1,600.0	1,597.1	1,598.2	1,598.1	3.1	2.8	-153.94	36.0	-15.7	89.3	83.8	5.58	16.013		
1,700.0	1,696.8	1,698.0	1,697.8	3.3	2.9	-156.69	34.7	-14.7	95.4	89.4	5.92	16.095		
1,800.0	1,796.5	1,797.7	1,797.5	3.5	3.1	-159.11	33.5	-13.7	101.5	95.3	6.27	16.199		
1,900.0	1,896.2	1,897.4	1,897.2	3.8	3.3	-161.25	32.2	-12.7	107.9	101.3	6.61	16.315		
2,000.0	1,995.9	1,997.1	1,996.9	4.0	3.5	-163.14	31.0	-11.7	114.4	107.4	6.96	16.439		
2,100.0	2,095.5	2,096.9	2,096.7	4.2	3.6	-164.84	29.7	-10.7	121.0	113.7	7.30	16.565		
2,200.0	2,195.2	2,196.6	2,196.4	4.4	3.8	-166.35	28.4	-9.7	127.7	120.0	7.65	16.692		
2,300.0	2,294.9	2,296.3	2,296.1	4.6	4.0	-167.72	27.2	-8.7	134.5	126.5	8.00	16.817		
2,400.0	2,394.6	2,396.0	2,395.8	4.9	4.2	-168.95	25.9	-7.7	141.3	133.0	8.34	16.938		
2,500.0	2,494.3	2,495.7	2,495.5	5.1	4.4	-170.07	24.7	-6.7	148.2	139.5	8.69	17.057		
2,600.0	2,594.0	2,595.5	2,595.2	5.3	4.5	-171.09	23.4	-5.7	155.1	146.1	9.04	17.171		
2,700.0	2,693.7	2,695.2	2,694.9	5.5	4.7	-172.02	22.2	-4.7	162.1	152.8	9.38	17.280		
2,800.0	2,793.4	2,794.9	2,794.6	5.7	4.9	-172.88	20.9	-3.7	169.2	159.4	9.73	17.386		
2,900.0	2,893.1	2,894.6	2,894.3	6.0	5.1	-173.66	19.6	-2.7	176.3	166.2	10.08	17.487		
3,000.0	2,992.8	2,994.4	2,994.0	6.2	5.2	-174.39	18.4	-1.7	183.4	172.9	10.43	17.583		
3,100.0	3,092.5	3,094.1	3,093.7	6.4	5.4	-175.06	17.1	-0.6	190.5	179.7	10.78	17.676		
3,200.0	3,192.2	3,193.8	3,193.4	6.6	5.6	-175.68	15.9	0.4	197.6	186.5	11.13	17.764		

Anticollision Report

Company:	EnCana Oil & Gas (USA) Inc	Local Co-ordinate Reference:	Well 8514C-27 M27 496
Project:	Story Gulch	TVD Reference:	KBE @ 8121.0ft (Original Well Elev)
Reference Site:	S27-T4S-R96W (M27 496)	MD Reference:	KBE @ 8121.0ft (Original Well Elev)
Site Error:	0.0ft	North Reference:	True
Reference Well:	8514C-27 M27 496	Survey Calculation Method:	Minimum Curvature
Well Error:	0.0ft	Output errors are at	2.00 sigma
Reference Wellbore	DD	Database:	USA EDM 5000 Multi Users DB
Reference Design:	Plan #1	Offset TVD Reference:	Offset Datum

Offset Design S27-T4S-R96W (M27 496) - 8514A-27 M27 496 - DD - Plan #1													Offset Site Error: 0.0 ft	
Survey Program: 0-MWD													Offset Well Error: 0.0 ft	
Reference		Offset		Semi Major Axis			Distance							Warning
Measured Depth (ft)	Vertical Depth (ft)	Measured Depth (ft)	Vertical Depth (ft)	Reference (ft)	Offset (ft)	Highside Toolface (°)	Offset Wellbore Centre +N/-S (ft)	+E/-W (ft)	Between Centres (ft)	Between Ellipses (ft)	Total Uncertainty Axis	Separation Factor		
0.0	0.0	0.0	0.0	0.0	0.0	-28.70	24.3	-13.3	27.7					
100.0	100.0	100.0	100.0	0.1	0.1	-28.70	24.3	-13.3	27.7	27.4	0.27	101.680		
200.0	200.0	200.0	200.0	0.3	0.3	-28.70	24.3	-13.3	27.7	27.1	0.62	44.556	CC, ES	
300.0	300.0	299.7	299.6	0.5	0.5	-25.35	25.5	-12.1	28.3	27.3	0.97	29.100		
400.0	400.0	399.1	398.9	0.7	0.7	-16.25	29.3	-8.5	30.6	29.2	1.33	22.930		
500.0	500.0	498.0	497.5	0.8	0.9	-4.28	35.5	-2.7	35.7	34.0	1.73	20.706		
600.0	600.0	597.5	596.4	1.0	1.1	-66.54	43.3	4.6	42.9	40.9	2.07	20.705		
700.0	699.8	697.3	695.6	1.2	1.4	-64.13	51.0	11.9	49.2	46.7	2.45	20.042		
800.0	799.5	797.2	794.9	1.4	1.6	-64.68	58.8	19.3	54.4	51.5	2.85	19.055		
900.0	899.2	897.0	894.2	1.6	1.9	-65.23	66.5	26.6	59.5	56.3	3.26	18.252		
1,000.0	998.9	996.9	993.5	1.8	2.1	-65.70	74.3	33.9	64.7	61.0	3.67	17.604		
1,100.0	1,098.6	1,096.8	1,092.8	2.0	2.4	-66.11	82.0	41.3	69.8	65.8	4.09	17.071		
1,200.0	1,198.3	1,196.6	1,192.1	2.2	2.6	-66.45	89.8	48.6	75.0	70.5	4.51	16.626		
1,300.0	1,298.0	1,296.5	1,291.4	2.4	2.9	-66.75	97.6	55.9	80.2	75.2	4.93	16.251		
1,400.0	1,397.7	1,396.4	1,390.7	2.7	3.2	-67.02	105.3	63.2	85.3	80.0	5.36	15.929		
1,500.0	1,497.4	1,496.2	1,490.0	2.9	3.4	-67.25	113.1	70.6	90.5	84.7	5.78	15.652		
1,600.0	1,597.1	1,596.1	1,589.3	3.1	3.7	-67.46	120.8	77.9	95.7	89.5	6.21	15.409		
1,700.0	1,696.8	1,696.0	1,688.6	3.3	3.9	-67.65	128.6	85.2	100.9	94.2	6.64	15.196		
1,800.0	1,796.5	1,795.8	1,787.9	3.5	4.2	-67.82	136.4	92.5	106.0	99.0	7.06	15.007		
1,900.0	1,896.2	1,895.7	1,887.2	3.8	4.4	-67.97	144.1	99.9	111.2	103.7	7.49	14.839		
2,000.0	1,995.9	1,995.6	1,986.5	4.0	4.7	-68.11	151.9	107.2	116.4	108.5	7.92	14.688		
2,100.0	2,095.5	2,095.4	2,085.7	4.2	4.9	-68.24	159.6	114.5	121.5	113.2	8.35	14.551		
2,200.0	2,195.2	2,195.3	2,185.0	4.4	5.2	-68.36	167.4	121.8	126.7	117.9	8.78	14.428		
2,300.0	2,294.9	2,295.2	2,284.3	4.6	5.4	-68.46	175.1	129.2	131.9	122.7	9.21	14.315		
2,400.0	2,394.6	2,395.0	2,383.6	4.9	5.7	-68.56	182.9	136.5	137.1	127.4	9.65	14.212		
2,500.0	2,494.3	2,494.9	2,482.9	5.1	6.0	-68.66	190.7	143.8	142.3	132.2	10.08	14.117		
2,600.0	2,594.0	2,594.8	2,582.2	5.3	6.2	-68.74	198.4	151.1	147.4	136.9	10.51	14.030		
2,700.0	2,693.7	2,694.6	2,681.5	5.5	6.5	-68.82	206.2	158.5	152.6	141.7	10.94	13.950		
2,800.0	2,793.4	2,794.5	2,780.8	5.7	6.7	-68.90	213.9	165.8	157.8	146.4	11.37	13.875		
2,900.0	2,893.1	2,894.4	2,880.1	6.0	7.0	-68.97	221.7	173.1	163.0	151.2	11.80	13.806		
3,000.0	2,992.8	2,994.2	2,979.4	6.2	7.2	-69.03	229.5	180.4	168.1	155.9	12.24	13.742		
3,100.0	3,092.5	3,094.1	3,078.7	6.4	7.5	-69.10	237.2	187.8	173.3	160.7	12.67	13.681		
3,200.0	3,192.2	3,194.0	3,178.0	6.6	7.7	-69.16	245.0	195.1	178.5	165.4	13.10	13.625		
3,300.0	3,291.9	3,293.8	3,277.3	6.8	8.0	-69.21	252.7	202.4	183.7	170.1	13.53	13.572		
3,400.0	3,391.6	3,393.7	3,376.6	7.1	8.2	-69.26	260.5	209.7	188.9	174.9	13.97	13.522		
3,500.0	3,491.2	3,493.5	3,475.9	7.3	8.5	-69.31	268.2	217.1	194.0	179.6	14.40	13.476		
3,600.0	3,590.9	3,593.4	3,575.2	7.5	8.8	-69.36	276.0	224.4	199.2	184.4	14.83	13.431	SF	

Anticollision Report

Company:	EnCana Oil & Gas (USA) Inc	Local Co-ordinate Reference:	Well 8514C-27 M27 496
Project:	Story Gulch	TVD Reference:	KBE @ 8121.0ft (Original Well Elev)
Reference Site:	S27-T4S-R96W (M27 496)	MD Reference:	KBE @ 8121.0ft (Original Well Elev)
Site Error:	0.0ft	North Reference:	True
Reference Well:	8514C-27 M27 496	Survey Calculation Method:	Minimum Curvature
Well Error:	0.0ft	Output errors are at	2.00 sigma
Reference Wellbore	DD	Database:	USA EDM 5000 Multi Users DB
Reference Design:	Plan #1	Offset TVD Reference:	Offset Datum

Offset Design S27-T4S-R96W (M27 496) - 8514B-27 M27 496 - DD - Plan #1													Offset Site Error:	0.0 ft
Survey Program: O-MWD													Offset Well Error:	0.0 ft
Reference		Offset		Semi Major Axis		Highside Toolface (°)	Distance		Total Uncertainty Axis	Separation Factor	Warning			
Measured Depth (ft)	Vertical Depth (ft)	Measured Depth (ft)	Vertical Depth (ft)	Reference (ft)	Offset (ft)		Offset Wellbore Centre +N/-S (ft)	+E/-W (ft)						
0.0	0.0	0.0	0.0	0.0	0.0	-12.45	28.3	-6.3	29.0					
100.0	100.0	100.0	100.0	0.1	0.1	-12.45	28.3	-6.3	29.0	28.7	0.27	106.546		
200.0	200.0	200.0	200.0	0.3	0.3	-12.45	28.3	-6.3	29.0	28.4	0.62	46.689 CC, ES		
300.0	300.0	299.6	299.6	0.5	0.5	-9.35	29.3	-4.8	29.7	28.7	0.97	30.564		
400.0	400.0	398.9	398.8	0.7	0.7	-0.95	32.2	-0.5	32.2	30.9	1.33	24.169		
500.0	500.0	498.3	497.8	0.8	0.9	9.64	36.8	6.2	37.4	35.7	1.72	21.773		
600.0	600.0	598.0	597.1	1.0	1.1	-54.57	41.6	13.4	42.8	40.7	2.06	20.760		
700.0	699.8	697.9	696.7	1.2	1.3	-52.91	46.5	20.6	46.5	44.0	2.44	19.080		
800.0	799.5	797.9	796.3	1.4	1.6	-53.83	51.4	27.8	48.6	45.8	2.82	17.224		
900.0	899.2	897.9	895.9	1.6	1.8	-54.78	56.2	35.0	50.8	47.6	3.22	15.764		
1,000.0	998.9	997.8	995.5	1.8	2.0	-55.66	61.1	42.2	52.9	49.3	3.62	14.605		
1,100.0	1,098.6	1,097.8	1,095.0	2.0	2.3	-56.46	66.0	49.4	55.1	51.0	4.03	13.665		
1,200.0	1,198.3	1,197.8	1,194.6	2.2	2.5	-57.20	70.8	56.6	57.2	52.8	4.44	12.890		
1,300.0	1,298.0	1,297.8	1,294.2	2.4	2.7	-57.89	75.7	63.8	59.4	54.6	4.85	12.240		
1,400.0	1,397.7	1,397.7	1,393.8	2.7	2.9	-58.54	80.6	71.0	61.6	56.3	5.27	11.688		
1,500.0	1,497.4	1,497.7	1,493.4	2.9	3.2	-59.13	85.4	78.2	63.8	58.1	5.69	11.214		
1,600.0	1,597.1	1,597.7	1,593.0	3.1	3.4	-59.69	90.3	85.4	66.0	59.9	6.11	10.802		
1,700.0	1,696.8	1,697.7	1,692.6	3.3	3.6	-60.21	95.1	92.5	68.2	61.6	6.53	10.442		
1,800.0	1,796.5	1,797.6	1,792.2	3.5	3.9	-60.70	100.0	99.7	70.4	63.4	6.95	10.124		
1,900.0	1,896.2	1,897.6	1,891.8	3.8	4.1	-61.16	104.9	106.9	72.6	65.2	7.38	9.841		
2,000.0	1,995.9	1,997.6	1,991.4	4.0	4.3	-61.59	109.7	114.1	74.8	67.0	7.80	9.588		
2,100.0	2,095.5	2,097.6	2,091.0	4.2	4.6	-62.00	114.6	121.3	77.0	68.8	8.23	9.361		
2,200.0	2,195.2	2,197.5	2,190.6	4.4	4.8	-62.39	119.5	128.5	79.2	70.6	8.65	9.156		
2,300.0	2,294.9	2,297.5	2,290.2	4.6	5.0	-62.75	124.3	135.7	81.5	72.4	9.08	8.969		
2,400.0	2,394.6	2,397.5	2,389.8	4.9	5.2	-63.09	129.2	142.9	83.7	74.2	9.51	8.800		
2,500.0	2,494.3	2,497.5	2,489.4	5.1	5.5	-63.42	134.1	150.1	85.9	76.0	9.94	8.644		
2,600.0	2,594.0	2,597.4	2,589.0	5.3	5.7	-63.73	138.9	157.3	88.2	77.8	10.37	8.501		
2,700.0	2,693.7	2,697.4	2,688.6	5.5	5.9	-64.02	143.8	164.5	90.4	79.6	10.80	8.369		
2,800.0	2,793.4	2,797.4	2,788.2	5.7	6.2	-64.30	148.7	171.7	92.6	81.4	11.23	8.248		
2,900.0	2,893.1	2,897.3	2,887.8	6.0	6.4	-64.57	153.5	178.9	94.9	83.2	11.66	8.135		
3,000.0	2,992.8	2,997.3	2,987.4	6.2	6.6	-64.83	158.4	186.1	97.1	85.0	12.10	8.030		
3,100.0	3,092.5	3,097.3	3,087.0	6.4	6.9	-65.07	163.3	193.3	99.4	86.8	12.53	7.932		
3,200.0	3,192.2	3,197.3	3,186.6	6.6	7.1	-65.30	168.1	200.5	101.6	88.7	12.96	7.840		
3,300.0	3,291.9	3,297.2	3,286.2	6.8	7.3	-65.52	173.0	207.6	103.9	90.5	13.39	7.755		
3,400.0	3,391.6	3,397.2	3,385.8	7.1	7.6	-65.74	177.8	214.8	106.1	92.3	13.83	7.675		
3,500.0	3,491.2	3,497.2	3,485.4	7.3	7.8	-65.94	182.7	222.0	108.4	94.1	14.26	7.599		
3,600.0	3,590.9	3,597.2	3,585.0	7.5	8.0	-66.14	187.6	229.2	110.6	95.9	14.69	7.528		
3,700.0	3,690.6	3,697.1	3,684.5	7.7	8.3	-66.32	192.4	236.4	112.9	97.7	15.13	7.461		
3,800.0	3,790.3	3,797.1	3,784.1	7.9	8.5	-66.50	197.3	243.6	115.1	99.6	15.56	7.398		
3,900.0	3,890.0	3,897.1	3,883.7	8.2	8.7	-66.68	202.2	250.8	117.4	101.4	16.00	7.338		
4,000.0	3,989.7	3,997.1	3,983.3	8.4	8.9	-66.85	207.0	258.0	119.6	103.2	16.43	7.282		
4,100.0	4,089.4	4,097.0	4,082.9	8.6	9.2	-67.01	211.9	265.2	121.9	105.0	16.87	7.228		
4,200.0	4,189.1	4,197.0	4,182.5	8.8	9.4	-67.16	216.8	272.4	124.2	106.9	17.30	7.177		
4,300.0	4,288.8	4,297.0	4,282.1	9.1	9.6	-67.31	221.6	279.6	126.4	108.7	17.73	7.128		
4,400.0	4,388.5	4,397.0	4,381.7	9.3	9.9	-67.46	226.5	286.8	128.7	110.5	18.17	7.082		
4,500.0	4,488.2	4,496.9	4,481.3	9.5	10.1	-67.59	231.4	294.0	130.9	112.3	18.61	7.038		
4,600.0	4,587.9	4,596.9	4,580.9	9.7	10.3	-67.73	236.2	301.2	133.2	114.2	19.04	6.995		
4,700.0	4,687.6	4,696.9	4,680.5	9.9	10.6	-67.86	241.1	308.4	135.5	116.0	19.48	6.955		
4,800.0	4,787.3	4,796.9	4,780.1	10.2	10.8	-67.99	245.9	315.6	137.7	117.8	19.91	6.917		
4,900.0	4,886.9	4,896.8	4,879.7	10.4	11.0	-68.11	250.8	322.7	140.0	119.6	20.35	6.880		
5,000.0	4,986.6	4,996.8	4,979.3	10.6	11.3	-68.22	255.7	329.9	142.3	121.5	20.78	6.845		
5,100.0	5,086.3	5,096.8	5,078.9	10.8	11.5	-68.34	260.5	337.1	144.5	123.3	21.22	6.811		

CC - Min centre to center distance or convergent point, SF - min separation factor, ES - min ellipse separation

Anticollision Report

Company:	EnCana Oil & Gas (USA) Inc	Local Co-ordinate Reference:	Well 8514C-27 M27 496
Project:	Story Gulch	TVD Reference:	KBE @ 8121.0ft (Original Well Elev)
Reference Site:	S27-T4S-R96W (M27 496)	MD Reference:	KBE @ 8121.0ft (Original Well Elev)
Site Error:	0.0ft	North Reference:	True
Reference Well:	8514C-27 M27 496	Survey Calculation Method:	Minimum Curvature
Well Error:	0.0ft	Output errors are at	2.00 sigma
Reference Wellbore	DD	Database:	USA EDM 5000 Multi Users DB
Reference Design:	Plan #1	Offset TVD Reference:	Offset Datum

Offset Design S27-T4S-R96W (M27 496) - 8514B-27 M27 496 - DD - Plan #1													Offset Site Error:	0.0 ft
Survey Program: O-MWD													Offset Well Error:	0.0 ft
Reference		Offset		Semi Major Axis			Distance						Warning	
Measured Depth (ft)	Vertical Depth (ft)	Measured Depth (ft)	Vertical Depth (ft)	Reference (ft)	Offset (ft)	Highside Toolface (°)	Offset Wellbore Centre +N/-S (ft)	+E/-W (ft)	Between Centres (ft)	Between Ellipses (ft)	Total Uncertainty Axis	Separation Factor		
5,200.0	5,186.0	5,196.7	5,178.5	11.0	11.7	-68.45	265.4	344.3	146.8	125.1	21.66	6.778		
5,300.0	5,285.7	5,296.7	5,278.1	11.3	12.0	-68.56	270.3	351.5	149.1	127.0	22.09	6.747		
5,400.0	5,385.4	5,396.7	5,377.7	11.5	12.2	-68.66	275.1	358.7	151.3	128.8	22.53	6.717		
5,500.0	5,485.1	5,496.7	5,477.3	11.7	12.4	-68.76	280.0	365.9	153.6	130.6	22.96	6.688		
5,600.0	5,584.8	5,596.6	5,576.9	11.9	12.6	-68.86	284.9	373.1	155.9	132.5	23.40	6.660		
5,700.0	5,684.5	5,696.6	5,676.5	12.2	12.9	-68.95	289.7	380.3	158.1	134.3	23.84	6.633		
5,800.0	5,784.2	5,796.6	5,776.1	12.4	13.1	-69.05	294.6	387.5	160.4	136.1	24.27	6.608		
5,900.0	5,883.9	5,896.6	5,875.7	12.6	13.3	-69.14	299.5	394.7	162.7	137.9	24.71	6.583		
6,000.0	5,983.6	5,996.5	5,975.3	12.8	13.6	-69.22	304.3	401.9	164.9	139.8	25.15	6.559		
6,100.0	6,083.3	6,096.5	6,074.9	13.0	13.8	-69.31	309.2	409.1	167.2	141.6	25.58	6.535		
6,200.0	6,183.0	6,196.5	6,174.4	13.3	14.0	-69.39	314.1	416.3	169.5	143.4	26.02	6.513		
6,300.0	6,282.6	6,296.5	6,274.0	13.5	14.3	-69.47	318.9	423.5	171.7	145.3	26.46	6.491		
6,400.0	6,382.3	6,396.4	6,373.6	13.7	14.5	-69.55	323.8	430.6	174.0	147.1	26.89	6.470		
6,500.0	6,482.0	6,496.4	6,473.2	13.9	14.7	-69.63	328.6	437.8	176.3	149.0	27.33	6.450		
6,600.0	6,581.7	6,596.4	6,572.8	14.1	15.0	-69.70	333.5	445.0	178.6	150.8	27.77	6.430		
6,700.0	6,681.4	6,696.4	6,672.4	14.4	15.2	-69.78	338.4	452.2	180.8	152.6	28.20	6.411		
6,800.0	6,781.1	6,796.3	6,772.0	14.6	15.4	-69.85	343.2	459.4	183.1	154.5	28.64	6.393		
6,900.0	6,880.8	6,896.3	6,871.6	14.8	15.7	-69.92	348.1	466.6	185.4	156.3	29.08	6.375		
7,000.0	6,980.5	6,996.3	6,971.2	15.0	15.9	-69.98	353.0	473.8	187.6	158.1	29.52	6.357		
7,100.0	7,080.2	7,096.3	7,070.8	15.3	16.1	-70.05	357.8	481.0	189.9	160.0	29.95	6.340		
7,200.0	7,179.9	7,196.2	7,170.4	15.5	16.3	-70.11	362.7	488.2	192.2	161.8	30.39	6.324		
7,300.0	7,279.6	7,296.2	7,270.0	15.7	16.6	-70.18	367.6	495.4	194.5	163.6	30.83	6.308		
7,400.0	7,379.3	7,398.0	7,371.4	15.9	16.8	-70.29	372.3	502.4	196.6	165.3	31.26	6.289		
7,500.0	7,479.2	7,502.0	7,475.3	16.1	17.0	-70.41	375.4	506.9	197.9	166.3	31.62	6.258		
7,600.0	7,579.1	7,605.9	7,579.1	16.2	17.1	0.24	376.3	508.3	198.3	166.4	31.91	6.215		
7,700.0	7,679.1	7,705.9	7,679.2	16.4	17.3	119.37	376.3	508.3	198.3	166.1	32.20	6.159		
7,800.0	7,779.1	7,805.9	7,779.2	16.5	17.4	119.37	376.3	508.3	198.3	165.8	32.49	6.104		
7,900.0	7,879.1	7,905.9	7,879.2	16.7	17.5	119.37	376.3	508.2	198.3	165.5	32.78	6.050		
8,000.0	7,979.1	8,006.0	7,979.3	16.8	17.7	119.37	376.2	508.1	198.3	165.3	33.08	5.996		
8,100.0	8,079.1	8,106.0	8,079.3	16.9	17.8	119.38	376.1	508.0	198.3	165.0	33.37	5.944		
8,200.0	8,179.1	8,206.0	8,179.3	17.1	17.9	119.38	376.1	507.9	198.3	164.7	33.66	5.892		
8,300.0	8,279.1	8,306.1	8,279.3	17.2	18.1	119.37	376.0	507.7	198.3	164.4	33.95	5.841		
8,400.0	8,379.1	8,406.1	8,379.4	17.4	18.2	119.37	375.9	507.5	198.3	164.1	34.25	5.791		
8,500.0	8,479.1	8,506.1	8,479.4	17.5	18.4	119.37	375.8	507.3	198.3	163.8	34.54	5.742		
8,600.0	8,579.1	8,606.1	8,579.4	17.7	18.5	119.37	375.6	507.1	198.3	163.5	34.84	5.693		
8,700.0	8,679.1	8,706.2	8,679.4	17.8	18.6	119.37	375.5	506.8	198.3	163.2	35.13	5.645		
8,800.0	8,779.1	8,806.2	8,779.5	18.0	18.8	119.37	375.3	506.5	198.3	162.9	35.43	5.598		
8,900.0	8,879.1	8,906.2	8,879.5	18.1	18.9	119.37	375.1	506.2	198.3	162.6	35.73	5.552		
9,000.0	8,979.1	9,006.3	8,979.5	18.3	19.0	119.37	374.9	505.8	198.3	162.3	36.02	5.506		
9,100.0	9,079.1	9,106.3	9,079.6	18.4	19.2	119.37	374.7	505.5	198.3	162.0	36.32	5.461		
9,200.0	9,179.1	9,206.3	9,179.6	18.5	19.3	119.37	374.5	505.1	198.3	161.7	36.62	5.416		
9,300.0	9,279.1	9,306.3	9,279.6	18.7	19.5	119.37	374.3	504.7	198.3	161.4	36.92	5.372		
9,400.0	9,379.1	9,406.4	9,379.6	18.8	19.6	119.37	374.0	504.2	198.3	161.1	37.22	5.329		
9,500.0	9,479.1	9,506.4	9,479.7	19.0	19.8	119.37	373.8	503.8	198.3	160.8	37.52	5.286		
9,600.0	9,579.1	9,606.4	9,579.7	19.1	19.9	119.37	373.5	503.3	198.3	160.5	37.82	5.245		
9,700.0	9,679.1	9,706.4	9,679.7	19.3	20.0	119.37	373.2	502.7	198.3	160.2	38.12	5.203		
9,800.0	9,779.1	9,806.5	9,779.7	19.4	20.2	119.37	372.9	502.2	198.3	159.9	38.42	5.162		
9,900.0	9,879.1	9,906.5	9,879.8	19.6	20.3	119.37	372.6	501.6	198.3	159.6	38.72	5.122		
10,000.0	9,979.1	10,006.5	9,979.8	19.7	20.5	119.37	372.3	501.0	198.3	159.3	39.02	5.083		
10,100.0	10,079.1	10,106.6	10,079.8	19.9	20.6	119.37	371.9	500.4	198.3	159.0	39.32	5.044		
10,200.0	10,179.1	10,206.6	10,179.8	20.0	20.7	119.37	371.6	499.8	198.3	158.7	39.63	5.005		
10,300.0	10,279.1	10,306.6	10,279.9	20.2	20.9	119.37	371.2	499.1	198.3	158.4	39.93	4.967		

CC - Min centre to center distance or convergent point, SF - min separation factor, ES - min ellipse separation

Anticollision Report

Company:	EnCana Oil & Gas (USA) Inc	Local Co-ordinate Reference:	Well 8514C-27 M27 496
Project:	Story Gulch	TVD Reference:	KBE @ 8121.0ft (Original Well Elev)
Reference Site:	S27-T4S-R96W (M27 496)	MD Reference:	KBE @ 8121.0ft (Original Well Elev)
Site Error:	0.0ft	North Reference:	True
Reference Well:	8514C-27 M27 496	Survey Calculation Method:	Minimum Curvature
Well Error:	0.0ft	Output errors are at	2.00 sigma
Reference Wellbore	DD	Database:	USA EDM 5000 Multi Users DB
Reference Design:	Plan #1	Offset TVD Reference:	Offset Datum

Offset Design S27-T4S-R96W (M27 496) - 8514B-27 M27 496 - DD - Plan #1													Offset Site Error:	0.0 ft
Survey Program: 0-MWD													Offset Well Error:	0.0 ft
Reference		Offset		Semi Major Axis			Distance						Warning	
Measured Depth Depth (ft)	Vertical Depth (ft)	Measured Depth (ft)	Vertical Depth (ft)	Reference (ft)	Offset (ft)	Highside Toolface (")	Offset Wellbore Centre +N/-S (ft)	+E/-W (ft)	Between Centres (ft)	Between Ellipses (ft)	Total Uncertainty Axis	Separation Factor		
10,400.0	10,379.1	10,406.6	10,379.9	20.3	21.0	119.36	370.8	498.4	198.3	158.1	40.23	4.930		
10,500.0	10,479.1	10,506.7	10,479.9	20.5	21.2	119.36	370.4	497.7	198.3	157.8	40.54	4.893		
10,600.0	10,579.1	10,606.7	10,579.9	20.6	21.3	119.36	370.0	496.9	198.3	157.5	40.84	4.856		
10,700.0	10,679.1	10,706.7	10,680.0	20.8	21.5	119.36	369.6	496.2	198.3	157.2	41.14	4.820		
10,800.0	10,779.1	10,806.8	10,780.0	20.9	21.6	119.36	369.1	495.4	198.3	156.9	41.45	4.785		
10,900.0	10,879.1	10,906.8	10,880.0	21.1	21.7	119.36	368.7	494.5	198.3	156.6	41.75	4.750		
11,000.0	10,979.1	11,006.8	10,980.0	21.2	21.9	119.36	368.2	493.7	198.3	156.3	42.06	4.715		
11,100.0	11,079.1	11,106.8	11,080.1	21.4	22.0	119.36	367.7	492.8	198.3	156.0	42.37	4.681		
11,200.0	11,179.1	11,206.9	11,180.1	21.5	22.2	119.36	367.2	491.9	198.3	155.6	42.67	4.648		
11,300.0	11,279.1	11,306.9	11,280.1	21.7	22.3	119.35	366.7	491.0	198.3	155.3	42.98	4.614		
11,400.0	11,379.1	11,406.9	11,380.1	21.8	22.5	119.35	366.2	490.0	198.3	155.0	43.29	4.582		
11,500.0	11,479.1	11,506.9	11,480.1	22.0	22.6	119.35	365.6	489.1	198.3	154.7	43.59	4.549		
11,600.0	11,579.1	11,606.9	11,580.1	22.1	22.8	119.35	365.1	488.1	198.3	154.4	43.90	4.517		
11,700.0	11,679.0	11,706.9	11,680.1	22.3	22.9	119.35	364.6	487.2	198.3	154.1	44.21	4.486		
11,800.0	11,779.0	11,806.9	11,780.1	22.4	23.1	119.35	364.0	486.2	198.3	153.8	44.52	4.455		
11,900.0	11,879.0	11,906.9	11,880.1	22.6	23.2	119.35	363.5	485.3	198.3	153.5	44.83	4.424		
12,000.0	11,979.0	12,006.9	11,980.1	22.7	23.4	119.35	363.0	484.3	198.3	153.2	45.14	4.393		
12,100.0	12,079.0	12,106.9	12,080.1	22.9	23.5	119.34	362.4	483.4	198.3	152.9	45.45	4.363		
12,200.0	12,179.0	12,206.9	12,180.1	23.0	23.6	119.34	361.9	482.4	198.3	152.5	45.76	4.333		
12,300.0	12,279.0	12,306.9	12,280.1	23.2	23.8	119.34	361.4	481.5	198.3	152.2	46.08	4.304		
12,354.7	12,333.7	12,361.6	12,334.8	23.3	23.9	119.34	361.1	480.9	198.3	152.1	46.25	4.288		
12,375.0	12,354.0	12,380.9	12,354.0	23.3	23.9	119.34	361.0	480.7	198.3	152.0	46.31	4.282 SF		

Anticollision Report

Company:	EnCana Oil & Gas (USA) Inc	Local Co-ordinate Reference:	Well 8514C-27 M27 496
Project:	Story Gulch	TVD Reference:	KBE @ 8121.0ft (Original Well Elev)
Reference Site:	S27-T4S-R96W (M27 496)	MD Reference:	KBE @ 8121.0ft (Original Well Elev)
Site Error:	0.0ft	North Reference:	True
Reference Well:	8514C-27 M27 496	Survey Calculation Method:	Minimum Curvature
Well Error:	0.0ft	Output errors are at	2.00 sigma
Reference Wellbore	DD	Database:	USA EDM 5000 Multi Users DB
Reference Design:	Plan #1	Offset TVD Reference:	Offset Datum

Offset Design S27-T4S-R96W (M27 496) - 8514D-27 M27 496 - DD - Plan #1														Offset Site Error:	0.0 ft
Survey Program: 0-MWD														Offset Well Error:	0.0 ft
Reference		Offset		Semi Major Axis		Highside Toolface (°)	Distance		Total Uncertainty Axis	Separation Factor	Warning				
Measured Depth (ft)	Vertical Depth (ft)	Measured Depth (ft)	Vertical Depth (ft)	Reference (ft)	Offset (ft)		Offset Wellbore Centre +N/-S (ft)	+E/-W (ft)							
0.0	0.0	0.0	0.0	0.0	0.0	151.10	-7.1	3.9	8.1						
100.0	100.0	100.0	100.0	0.1	0.1	151.10	-7.1	3.9	8.1	7.8	0.27	29.714			
200.0	200.0	200.0	200.0	0.3	0.3	151.10	-7.1	3.9	8.1	7.5	0.62	13.021			
300.0	300.0	300.0	300.0	0.5	0.5	151.10	-7.1	3.9	8.1	7.1	0.97	8.337 CC, ES			
400.0	400.0	399.8	399.8	0.7	0.7	141.64	-7.1	5.6	9.1	7.8	1.32	6.898			
500.0	500.0	499.4	499.2	0.8	0.9	123.93	-7.3	10.8	13.1	11.4	1.68	7.813			
600.0	600.0	599.2	598.8	1.0	1.1	45.64	-7.5	17.9	18.2	16.2	2.03	9.002			
700.0	699.8	699.2	698.5	1.2	1.3	47.72	-7.7	25.1	21.1	18.7	2.39	8.821			
800.0	799.5	799.1	798.2	1.4	1.5	54.18	-7.9	32.2	22.4	19.6	2.77	8.071			
900.0	899.2	899.1	897.9	1.6	1.7	60.09	-8.2	39.3	23.9	20.7	3.17	7.528			
1,000.0	998.9	999.0	997.6	1.8	1.9	65.25	-8.4	46.4	25.6	22.0	3.59	7.144			
1,100.0	1,098.6	1,099.0	1,097.3	2.0	2.1	69.73	-8.6	53.5	27.5	23.5	4.01	6.868			
1,200.0	1,198.3	1,199.0	1,197.0	2.2	2.3	73.61	-8.8	60.6	29.6	25.2	4.44	6.668			
1,300.0	1,298.0	1,298.9	1,296.7	2.4	2.5	76.96	-9.0	67.8	31.8	26.9	4.87	6.522			
1,400.0	1,397.7	1,398.9	1,396.4	2.7	2.7	79.88	-9.2	74.9	34.0	28.7	5.31	6.415			
1,500.0	1,497.4	1,498.8	1,496.1	2.9	2.9	82.43	-9.5	82.0	36.4	30.6	5.74	6.337			
1,600.0	1,597.1	1,598.8	1,595.9	3.1	3.2	84.66	-9.7	89.1	38.8	32.6	6.18	6.279			
1,700.0	1,696.8	1,698.8	1,695.6	3.3	3.4	86.64	-9.9	96.2	41.3	34.6	6.62	6.236			
1,800.0	1,796.5	1,798.7	1,795.3	3.5	3.6	88.38	-10.1	103.3	43.8	36.7	7.05	6.205			
1,900.0	1,896.2	1,898.7	1,895.0	3.8	3.8	89.94	-10.3	110.4	46.3	38.8	7.49	6.183			
2,000.0	1,995.9	1,998.6	1,994.7	4.0	4.0	91.33	-10.5	117.6	48.9	41.0	7.93	6.167			
2,100.0	2,095.5	2,098.6	2,094.4	4.2	4.2	92.59	-10.8	124.7	51.5	43.1	8.36	6.157			
2,200.0	2,195.2	2,198.6	2,194.1	4.4	4.4	93.72	-11.0	131.8	54.1	45.3	8.80	6.150			
2,300.0	2,294.9	2,298.5	2,293.8	4.6	4.7	94.75	-11.2	138.9	56.7	47.5	9.23	6.146			
2,400.0	2,394.6	2,398.5	2,393.5	4.9	4.9	95.68	-11.4	146.0	59.4	49.7	9.67	6.145 SF			
2,500.0	2,494.3	2,498.4	2,493.2	5.1	5.1	96.54	-11.6	153.1	62.1	52.0	10.10	6.145			
2,600.0	2,594.0	2,598.4	2,592.9	5.3	5.3	97.32	-11.8	160.3	64.8	54.2	10.54	6.147			
2,700.0	2,693.7	2,698.4	2,692.6	5.5	5.5	98.05	-12.0	167.4	67.5	56.5	10.97	6.149			
2,800.0	2,793.4	2,798.3	2,792.3	5.7	5.7	98.71	-12.3	174.5	70.2	58.8	11.40	6.153			
2,900.0	2,893.1	2,898.3	2,892.0	6.0	5.9	99.33	-12.5	181.6	72.9	61.0	11.84	6.157			
3,000.0	2,992.8	2,998.3	2,991.7	6.2	6.2	99.90	-12.7	188.7	75.6	63.3	12.27	6.162			
3,100.0	3,092.5	3,098.2	3,091.5	6.4	6.4	100.44	-12.9	195.8	78.3	65.6	12.70	6.167			
3,200.0	3,192.2	3,198.2	3,191.2	6.6	6.6	100.93	-13.1	202.9	81.1	67.9	13.13	6.172			
3,300.0	3,291.9	3,298.1	3,290.9	6.8	6.8	101.40	-13.3	210.1	83.8	70.2	13.56	6.178			
3,400.0	3,391.6	3,398.1	3,390.6	7.1	7.0	101.83	-13.6	217.2	86.5	72.6	14.00	6.184			
3,500.0	3,491.2	3,498.1	3,490.3	7.3	7.2	102.24	-13.8	224.3	89.3	74.9	14.43	6.189			
3,600.0	3,590.9	3,598.0	3,590.0	7.5	7.4	102.62	-14.0	231.4	92.1	77.2	14.86	6.195			
3,700.0	3,690.6	3,698.0	3,689.7	7.7	7.7	102.99	-14.2	238.5	94.8	79.5	15.29	6.201			
3,800.0	3,790.3	3,797.9	3,789.4	7.9	7.9	103.33	-14.4	245.6	97.6	81.9	15.72	6.206			
3,900.0	3,890.0	3,897.9	3,889.1	8.2	8.1	103.65	-14.6	252.8	100.3	84.2	16.15	6.212			
4,000.0	3,989.7	3,997.9	3,988.8	8.4	8.3	103.95	-14.9	259.9	103.1	86.5	16.58	6.218			
4,100.0	4,089.4	4,097.8	4,088.5	8.6	8.5	104.24	-15.1	267.0	105.9	88.9	17.01	6.223			
4,200.0	4,189.1	4,197.8	4,188.2	8.8	8.7	104.52	-15.3	274.1	108.7	91.2	17.45	6.229			
4,300.0	4,288.8	4,297.7	4,287.9	9.1	8.9	104.78	-15.5	281.2	111.4	93.6	17.88	6.234			
4,400.0	4,388.5	4,397.7	4,387.6	9.3	9.2	105.02	-15.7	288.3	114.2	95.9	18.31	6.239			
4,500.0	4,488.2	4,497.7	4,487.3	9.5	9.4	105.26	-15.9	295.4	117.0	98.3	18.74	6.244			
4,600.0	4,587.9	4,597.6	4,587.0	9.7	9.6	105.49	-16.2	302.6	119.8	100.6	19.17	6.249			
4,700.0	4,687.6	4,697.6	4,686.8	9.9	9.8	105.70	-16.4	309.7	122.6	103.0	19.60	6.254			
4,800.0	4,787.3	4,797.5	4,786.5	10.2	10.0	105.91	-16.6	316.8	125.4	105.3	20.03	6.259			
4,900.0	4,886.9	4,897.5	4,886.2	10.4	10.2	106.10	-16.8	323.9	128.1	107.7	20.46	6.264			
5,000.0	4,986.6	4,997.5	4,985.9	10.6	10.4	106.29	-17.0	331.0	130.9	110.0	20.89	6.268			
5,100.0	5,086.3	5,097.4	5,085.6	10.8	10.7	106.47	-17.2	338.1	133.7	112.4	21.32	6.273			

CC - Min centre to center distance or convergent point, SF - min separation factor, ES - min ellipse separation

Anticollision Report

Company:	EnCana Oil & Gas (USA) Inc	Local Co-ordinate Reference:	Well 8514C-27 M27 496
Project:	Story Gulch	TVD Reference:	KBE @ 8121.0ft (Original Well Elev)
Reference Site:	S27-T4S-R96W (M27 496)	MD Reference:	KBE @ 8121.0ft (Original Well Elev)
Site Error:	0.0ft	North Reference:	True
Reference Well:	8514C-27 M27 496	Survey Calculation Method:	Minimum Curvature
Well Error:	0.0ft	Output errors are at	2.00 sigma
Reference Wellbore	DD	Database:	USA EDM 5000 Multi Users DB
Reference Design:	Plan #1	Offset TVD Reference:	Offset Datum

Offset Design S27-T4S-R96W (M27 496) - 8514D-27 M27 496 - DD - Plan #1													Offset Site Error:	0.0 ft
Survey Program: 0-MWD													Offset Well Error:	0.0 ft
Reference		Offset		Semi Major Axis			Distance						Warning	
Measured Depth (ft)	Vertical Depth (ft)	Measured Depth (ft)	Vertical Depth (ft)	Reference (ft)	Offset (ft)	Highside Toolface (°)	Offset Wellbore Centre +N/-S (ft)	+E/-W (ft)	Between Centres (ft)	Between Ellipses (ft)	Total Uncertainty Axis	Separation Factor		
5,200.0	5,186.0	5,197.4	5,185.3	11.0	10.9	106.64	-17.5	345.3	136.5	114.8	21.75	6.277		
5,300.0	5,285.7	5,297.3	5,285.0	11.3	11.1	106.81	-17.7	352.4	139.3	117.1	22.18	6.281		
5,400.0	5,385.4	5,397.3	5,384.7	11.5	11.3	106.97	-17.9	359.5	142.1	119.5	22.61	6.286		
5,500.0	5,485.1	5,497.3	5,484.4	11.7	11.5	107.12	-18.1	366.6	144.9	121.9	23.04	6.290		
5,600.0	5,584.8	5,597.2	5,584.1	11.9	11.7	107.27	-18.3	373.7	147.7	124.2	23.47	6.294		
5,700.0	5,684.5	5,697.2	5,683.8	12.2	11.9	107.41	-18.5	380.8	150.5	126.6	23.90	6.298		
5,800.0	5,784.2	5,797.1	5,783.5	12.4	12.2	107.55	-18.8	388.0	153.3	129.0	24.33	6.301		
5,900.0	5,883.9	5,897.1	5,883.2	12.6	12.4	107.68	-19.0	395.1	156.1	131.3	24.76	6.305		
6,000.0	5,983.6	5,997.1	5,982.9	12.8	12.6	107.81	-19.2	402.2	158.9	133.7	25.18	6.309		
6,100.0	6,083.3	6,097.0	6,082.6	13.0	12.8	107.93	-19.4	409.3	161.7	136.1	25.61	6.312		
6,200.0	6,183.0	6,197.0	6,182.3	13.3	13.0	108.05	-19.6	416.4	164.5	138.4	26.04	6.316		
6,300.0	6,282.6	6,296.9	6,282.1	13.5	13.2	108.16	-19.8	423.5	167.3	140.8	26.47	6.319		
6,400.0	6,382.3	6,396.9	6,381.8	13.7	13.4	108.27	-20.0	430.6	170.1	143.2	26.90	6.322		
6,500.0	6,482.0	6,496.9	6,481.5	13.9	13.7	108.38	-20.3	437.8	172.9	145.6	27.33	6.326		
6,600.0	6,581.7	6,596.8	6,581.2	14.1	13.9	108.49	-20.5	444.9	175.7	147.9	27.76	6.329		
6,700.0	6,681.4	6,696.8	6,680.9	14.4	14.1	108.59	-20.7	452.0	178.5	150.3	28.19	6.332		
6,800.0	6,781.1	6,796.7	6,780.6	14.6	14.3	108.68	-20.9	459.1	181.3	152.7	28.62	6.335		
6,900.0	6,880.8	6,896.7	6,880.3	14.8	14.5	108.78	-21.1	466.2	184.1	155.1	29.05	6.338		
7,000.0	6,980.5	6,996.7	6,980.0	15.0	14.7	108.87	-21.3	473.3	186.9	157.4	29.48	6.341		
7,100.0	7,080.2	7,096.6	7,079.7	15.3	14.9	108.96	-21.6	480.5	189.7	159.8	29.91	6.344		
7,200.0	7,179.9	7,196.6	7,179.4	15.5	15.2	109.05	-21.8	487.6	192.5	162.2	30.34	6.346		
7,300.0	7,279.6	7,296.5	7,279.1	15.7	15.4	109.13	-22.0	494.7	195.3	164.6	30.77	6.349		
7,400.0	7,379.3	7,396.5	7,378.9	15.9	15.6	109.20	-22.2	501.7	198.1	166.9	31.19	6.351		
7,500.0	7,479.2	7,496.8	7,479.0	16.1	15.8	109.25	-22.3	506.3	199.9	168.3	31.54	6.337		

Anticollision Report

Company:	EnCana Oil & Gas (USA) Inc	Local Co-ordinate Reference:	Well 8514C-27 M27 496
Project:	Story Gulch	TVD Reference:	KBE @ 8121.0ft (Original Well Elev)
Reference Site:	S27-T4S-R96W (M27 496)	MD Reference:	KBE @ 8121.0ft (Original Well Elev)
Site Error:	0.0ft	North Reference:	True
Reference Well:	8514C-27 M27 496	Survey Calculation Method:	Minimum Curvature
Well Error:	0.0ft	Output errors are at	2.00 sigma
Reference Wellbore	DD	Database:	USA EDM 5000 Multi Users DB
Reference Design:	Plan #1	Offset TVD Reference:	Offset Datum

Offset Design S27-T4S-R96W (M27 496) - 8514E-27 M27 496 - DD - Plan #1													Offset Site Error:	0.0 ft
Survey Program: 0-MWD													Offset Well Error:	0.0 ft
Reference		Offset		Semi Major Axis		Highside Toolface (°)	Distance		Total Uncertainty Axis	Separation Factor	Warning			
Measured Depth (ft)	Vertical Depth (ft)	Measured Depth (ft)	Vertical Depth (ft)	Reference (ft)	Offset (ft)		Offset Wellbore Centre +N/-S (ft)	+E/-W (ft)						
0.0	0.0	0.0	0.0	0.0	0.0	152.28	-25.3	13.3	28.6					
100.0	100.0	100.0	100.0	0.1	0.1	152.28	-25.3	13.3	28.6	28.3	0.27	104.955		
200.0	200.0	200.0	200.0	0.3	0.3	152.28	-25.3	13.3	28.6	28.0	0.62	45.992		
300.0	300.0	300.0	300.0	0.5	0.5	152.28	-25.3	13.3	28.6	27.6	0.97	29.448		
400.0	400.0	400.0	400.0	0.7	0.7	152.28	-25.3	13.3	28.6	27.3	1.32	21.657 CC, ES		
500.0	500.0	499.2	499.2	0.8	0.8	150.14	-25.9	14.9	29.9	28.2	1.67	17.936		
600.0	600.0	598.2	598.1	1.0	1.0	76.85	-27.8	19.7	33.7	31.7	2.02	16.667		
700.0	699.8	697.9	697.5	1.2	1.2	77.74	-30.6	26.7	38.7	36.3	2.39	16.171		
800.0	799.5	797.8	797.0	1.4	1.4	81.66	-33.5	33.8	43.3	40.5	2.78	15.573		
900.0	899.2	897.6	896.6	1.6	1.6	84.95	-36.3	40.9	48.1	44.9	3.18	15.114		
1,000.0	998.9	997.5	996.1	1.8	1.8	87.64	-39.2	48.0	52.9	49.4	3.59	14.760		
1,100.0	1,098.6	1,097.3	1,095.7	2.0	2.1	89.87	-42.0	55.1	57.9	53.9	4.00	14.482		
1,200.0	1,198.3	1,197.2	1,195.3	2.2	2.3	91.74	-44.8	62.2	63.0	58.6	4.42	14.260		
1,300.0	1,298.0	1,297.0	1,294.8	2.4	2.5	93.34	-47.7	69.3	68.1	63.3	4.84	14.079		
1,400.0	1,397.7	1,396.9	1,394.4	2.7	2.7	94.71	-50.5	76.4	73.3	68.0	5.26	13.930		
1,500.0	1,497.4	1,496.7	1,493.9	2.9	2.9	95.90	-53.4	83.5	78.5	72.8	5.69	13.805		
1,600.0	1,597.1	1,596.6	1,593.5	3.1	3.1	96.94	-56.2	90.6	83.8	77.6	6.11	13.700		
1,700.0	1,696.8	1,696.4	1,693.0	3.3	3.4	97.86	-59.0	97.7	89.0	82.5	6.54	13.610		
1,800.0	1,796.5	1,796.3	1,792.6	3.5	3.6	98.67	-61.9	104.9	94.3	87.3	6.97	13.533		
1,900.0	1,896.2	1,896.1	1,892.2	3.8	3.8	99.40	-64.7	112.0	99.6	92.2	7.40	13.466		
2,000.0	1,995.9	1,996.0	1,991.7	4.0	4.0	100.06	-67.5	119.1	104.9	97.1	7.82	13.407		
2,100.0	2,095.5	2,095.8	2,091.3	4.2	4.2	100.65	-70.4	126.2	110.2	102.0	8.25	13.356		
2,200.0	2,195.2	2,195.7	2,190.8	4.4	4.4	101.19	-73.2	133.3	115.6	106.9	8.68	13.310		
2,300.0	2,294.9	2,295.5	2,290.4	4.6	4.7	101.68	-76.1	140.4	120.9	111.8	9.11	13.269		
2,400.0	2,394.6	2,395.4	2,390.0	4.9	4.9	102.13	-78.9	147.5	126.3	116.7	9.54	13.232		
2,500.0	2,494.3	2,495.2	2,489.5	5.1	5.1	102.54	-81.7	154.6	131.6	121.7	9.97	13.199		
2,600.0	2,594.0	2,595.1	2,589.1	5.3	5.3	102.92	-84.6	161.7	137.0	126.6	10.40	13.170		
2,700.0	2,693.7	2,694.9	2,688.6	5.5	5.5	103.27	-87.4	168.8	142.4	131.5	10.83	13.142		
2,800.0	2,793.4	2,794.8	2,788.2	5.7	5.8	103.60	-90.3	175.9	147.7	136.5	11.26	13.118		
2,900.0	2,893.1	2,894.7	2,887.7	6.0	6.0	103.90	-93.1	183.0	153.1	141.4	11.69	13.095		
3,000.0	2,992.8	2,994.5	2,987.3	6.2	6.2	104.18	-95.9	190.1	158.5	146.4	12.12	13.074		
3,100.0	3,092.5	3,094.4	3,086.9	6.4	6.4	104.44	-98.8	197.2	163.9	151.3	12.55	13.055		
3,200.0	3,192.2	3,194.2	3,186.4	6.6	6.6	104.69	-101.6	204.4	169.3	156.3	12.98	13.038		
3,300.0	3,291.9	3,294.1	3,286.0	6.8	6.9	104.92	-104.4	211.5	174.7	161.3	13.42	13.021		
3,400.0	3,391.6	3,393.9	3,385.5	7.1	7.1	105.14	-107.3	218.6	180.1	166.2	13.85	13.006		
3,500.0	3,491.2	3,493.8	3,485.1	7.3	7.3	105.34	-110.1	225.7	185.5	171.2	14.28	12.992		
3,600.0	3,590.9	3,593.6	3,584.7	7.5	7.5	105.54	-113.0	232.8	190.9	176.2	14.71	12.979		
3,700.0	3,690.6	3,693.5	3,684.2	7.7	7.7	105.72	-115.8	239.9	196.3	181.2	15.14	12.966 SF		

Anticollision Report

Company:	EnCana Oil & Gas (USA) Inc	Local Co-ordinate Reference:	Well 8514C-27 M27 496
Project:	Story Gulch	TVD Reference:	KBE @ 8121.0ft (Original Well Elev)
Reference Site:	S27-T4S-R96W (M27 496)	MD Reference:	KBE @ 8121.0ft (Original Well Elev)
Site Error:	0.0ft	North Reference:	True
Reference Well:	8514C-27 M27 496	Survey Calculation Method:	Minimum Curvature
Well Error:	0.0ft	Output errors are at	2.00 sigma
Reference Wellbore	DD	Database:	USA EDM 5000 Multi Users DB
Reference Design:	Plan #1	Offset TVD Reference:	Offset Datum

Offset Design S27-T4S-R96W (M27 496) - 8514F-27 M27 496 - DD - Plan #1													Offset Site Error:	0.0 ft
Survey Program: 0-MWD													Offset Well Error:	0.0 ft
Reference		Offset		Semi Major Axis			Distance						Warning	
Measured Depth (ft)	Vertical Depth (ft)	Measured Depth (ft)	Vertical Depth (ft)	Reference (ft)	Offset (ft)	Highside Toolface (°)	Offset Wellbore Centre +N/-S (ft)	+E/-W (ft)	Between Centres (ft)	Between Ellipses (ft)	Total Uncertainty Axis	Separation Factor		
0.0	0.0	0.0	0.0	0.0	0.0	152.02	-32.4	17.2	36.7					
100.0	100.0	100.0	100.0	0.1	0.1	152.02	-32.4	17.2	36.7	36.4	0.27	134.664		
200.0	200.0	200.0	200.0	0.3	0.3	152.02	-32.4	17.2	36.7	36.0	0.62	59.010		
300.0	300.0	300.0	300.0	0.5	0.5	152.02	-32.4	17.2	36.7	35.7	0.97	37.784	CC, ES	
400.0	400.0	398.9	398.9	0.7	0.7	150.66	-33.2	18.7	38.1	36.8	1.32	28.923		
500.0	500.0	497.5	497.4	0.8	0.8	147.16	-35.8	23.1	42.7	41.0	1.67	25.498		
600.0	600.0	596.2	595.7	1.0	1.1	74.26	-40.1	30.1	49.8	47.8	2.02	24.643		
700.0	699.8	695.9	695.0	1.2	1.3	76.69	-45.7	37.0	57.0	54.6	2.39	23.869		
800.0	799.5	795.6	794.3	1.4	1.5	80.85	-51.3	43.9	63.9	61.1	2.77	23.024		
900.0	899.2	895.3	893.6	1.6	1.7	84.30	-56.8	50.8	71.0	67.8	3.17	22.387		
1,000.0	998.9	994.9	992.8	1.8	1.9	87.11	-62.4	57.7	78.3	74.7	3.58	21.900		
1,100.0	1,098.6	1,094.6	1,092.1	2.0	2.2	89.44	-68.0	64.7	85.8	81.8	3.99	21.521		
1,200.0	1,198.3	1,194.2	1,191.4	2.2	2.4	91.39	-73.6	71.6	93.4	89.0	4.40	21.218		
1,300.0	1,298.0	1,293.9	1,290.6	2.4	2.6	93.05	-79.1	78.5	101.1	96.3	4.82	20.974		
1,400.0	1,397.7	1,393.6	1,389.9	2.7	2.9	94.47	-84.7	85.4	108.9	103.6	5.24	20.772		
1,500.0	1,497.4	1,493.2	1,489.2	2.9	3.1	95.70	-90.3	92.4	116.7	111.0	5.66	20.605		
1,600.0	1,597.1	1,592.9	1,588.4	3.1	3.3	96.78	-95.8	99.3	124.6	118.5	6.09	20.464		
1,700.0	1,696.8	1,692.6	1,687.7	3.3	3.6	97.73	-101.4	106.2	132.5	126.0	6.51	20.343		
1,800.0	1,796.5	1,792.2	1,787.0	3.5	3.8	98.57	-107.0	113.1	140.4	133.5	6.94	20.240		
1,900.0	1,896.2	1,891.9	1,886.2	3.8	4.0	99.32	-112.6	120.1	148.4	141.0	7.36	20.150		
2,000.0	1,995.9	1,991.6	1,985.5	4.0	4.3	100.00	-118.1	127.0	156.4	148.6	7.79	20.072		
2,100.0	2,095.5	2,091.2	2,084.8	4.2	4.5	100.60	-123.7	133.9	164.4	156.2	8.22	20.003		
2,200.0	2,195.2	2,190.9	2,184.0	4.4	4.7	101.16	-129.3	140.8	172.4	163.8	8.64	19.942		
2,300.0	2,294.9	2,290.6	2,283.3	4.6	5.0	101.66	-134.8	147.8	180.4	171.4	9.07	19.888		
2,400.0	2,394.6	2,390.2	2,382.6	4.9	5.2	102.12	-140.4	154.7	188.5	179.0	9.50	19.839		
2,500.0	2,494.3	2,489.9	2,481.8	5.1	5.4	102.54	-146.0	161.6	196.6	186.6	9.93	19.795	SF	

Anticollision Report

Company:	EnCana Oil & Gas (USA) Inc	Local Co-ordinate Reference:	Well 8514C-27 M27 496
Project:	Story Gulch	TVD Reference:	KBE @ 8121.0ft (Original Well Elev)
Reference Site:	S27-T4S-R96W (M27 496)	MD Reference:	KBE @ 8121.0ft (Original Well Elev)
Site Error:	0.0ft	North Reference:	True
Reference Well:	8514C-27 M27 496	Survey Calculation Method:	Minimum Curvature
Well Error:	0.0ft	Output errors are at	2.00 sigma
Reference Wellbore	DD	Database:	USA EDM 5000 Multi Users DB
Reference Design:	Plan #1	Offset TVD Reference:	Offset Datum

Offset Design												S27-T4S-R96W (M27 496) - 8515A-27 M27 496 - DD - Plan #1		Offset Site Error:		0.0 ft
Survey Program:												0-MWD	Offset Well Error:		0.0 ft	
Reference		Offset		Semi Major Axis			Distance							Warning		
Measured Depth	Vertical Depth	Measured Depth	Vertical Depth	Reference	Offset	Highside Toolface	Offset Wellbore Centre		Between Centres	Between Ellipses	Total Uncertainty Axis	Separation Factor				
(ft)	(ft)	(ft)	(ft)	(ft)	(ft)	(°)	+N/-S (ft)	+E/-W (ft)	(ft)	(ft)						
0.0	0.0	0.0	0.0	0.0	0.0	-6.30	21.2	-2.3	21.4							
100.0	100.0	100.0	100.0	0.1	0.1	-6.30	21.2	-2.3	21.4	21.1	0.27	78.516				
200.0	200.0	200.0	200.0	0.3	0.3	-6.30	21.2	-2.3	21.4	20.8	0.62	34.406	CC, ES			
300.0	300.0	299.8	299.8	0.5	0.5	0.57	21.7	0.2	21.7	20.8	0.97	22.356				
400.0	400.0	399.1	398.7	0.7	0.7	18.69	23.2	7.8	24.5	23.2	1.35	18.162	SF			
500.0	500.0	497.3	496.1	0.8	1.0	38.52	25.6	20.3	32.9	31.1	1.81	18.214				
600.0	600.0	594.3	591.5	1.0	1.3	-18.79	28.8	37.5	46.4	44.3	2.09	22.204				
700.0	699.8	690.2	684.8	1.2	1.8	-10.75	32.9	59.1	62.6	60.2	2.43	25.755				
800.0	799.5	784.6	775.5	1.4	2.3	-5.45	37.8	84.9	81.9	79.1	2.76	29.615				
900.0	899.2	877.0	862.9	1.6	2.9	-1.75	43.4	114.3	106.2	103.1	3.09	34.351				
1,000.0	998.9	967.0	946.5	1.8	3.5	0.81	49.6	146.9	135.3	131.9	3.41	39.667				
1,100.0	1,098.6	1,061.8	1,033.8	2.0	4.2	2.66	56.5	183.3	166.7	163.0	3.74	44.582				
1,200.0	1,198.3	1,156.6	1,121.1	2.2	4.9	3.92	63.4	219.6	198.3	194.2	4.07	48.707				

Anticollision Report

Company:	EnCana Oil & Gas (USA) Inc	Local Co-ordinate Reference:	Well 8514C-27 M27 496
Project:	Story Gulch	TVD Reference:	KBE @ 8121.0ft (Original Well Elev)
Reference Site:	S27-T4S-R96W (M27 496)	MD Reference:	KBE @ 8121.0ft (Original Well Elev)
Site Error:	0.0ft	North Reference:	True
Reference Well:	8514C-27 M27 496	Survey Calculation Method:	Minimum Curvature
Well Error:	0.0ft	Output errors are at	2.00 sigma
Reference Wellbore	DD	Database:	USA EDM 5000 Multi Users DB
Reference Design:	Plan #1	Offset TVD Reference:	Offset Datum

Offset Design S27-T4S-R96W (M27 496) - 8515B-27 M27 496 - DD - Plan #1													Offset Site Error:	0.0 ft
Survey Program: 0-MWD													Offset Well Error:	0.0 ft
Reference		Offset		Semi Major Axis			Distance							
Measured Depth (ft)	Vertical Depth (ft)	Measured Depth (ft)	Vertical Depth (ft)	Reference (ft)	Offset (ft)	Highside Toolface (°)	Offset Wellbore Centre +N/-S (ft)	+E/-W (ft)	Between Centres (ft)	Between Ellipses (ft)	Total Uncertainty Axis	Separation Factor	Warning	
0.0	0.0	0.0	0.0	0.0	0.0	-28.61	17.2	-9.4	19.6					
100.0	100.0	100.0	100.0	0.1	0.1	-28.61	17.2	-9.4	19.6	19.3	0.27	71.966		
200.0	200.0	200.0	200.0	0.3	0.3	-28.61	17.2	-9.4	19.6	19.0	0.62	31.536		
300.0	300.0	300.3	300.2	0.5	0.5	-21.13	17.5	-6.8	18.8	17.8	0.97	19.350		
365.6	365.6	365.8	365.6	0.6	0.6	-7.07	18.1	-2.2	18.2	17.0	1.20	15.135 CC, ES		
400.0	400.0	400.0	399.6	0.7	0.7	3.09	18.5	1.0	18.5	17.2	1.33	13.890		
500.0	500.0	498.7	497.5	0.8	1.0	34.41	20.1	13.7	24.5	22.7	1.79	13.634 SF		
600.0	600.0	596.1	593.2	1.0	1.4	-16.78	22.2	31.2	37.3	35.2	2.10	17.719		
700.0	699.8	692.3	686.9	1.2	1.8	-6.47	25.0	53.2	53.5	51.0	2.43	21.987		
800.0	799.5	787.2	778.0	1.4	2.3	-0.25	28.2	79.5	72.9	70.2	2.75	26.467		
900.0	899.2	879.8	865.6	1.6	2.9	3.72	31.9	109.4	97.5	94.4	3.08	31.694		
1,000.0	998.9	970.6	949.9	1.8	3.5	6.31	36.1	142.8	126.9	123.5	3.40	37.363		
1,100.0	1,098.6	1,065.5	1,037.3	2.0	4.2	8.05	40.6	179.3	158.3	154.6	3.73	42.464		
1,200.0	1,198.3	1,160.3	1,124.7	2.2	4.9	9.22	45.1	215.8	189.8	185.8	4.06	46.722		

Anticollision Report

Company:	EnCana Oil & Gas (USA) Inc	Local Co-ordinate Reference:	Well 8514C-27 M27 496
Project:	Story Gulch	TVD Reference:	KBE @ 8121.0ft (Original Well Elev)
Reference Site:	S27-T4S-R96W (M27 496)	MD Reference:	KBE @ 8121.0ft (Original Well Elev)
Site Error:	0.0ft	North Reference:	True
Reference Well:	8514C-27 M27 496	Survey Calculation Method:	Minimum Curvature
Well Error:	0.0ft	Output errors are at	2.00 sigma
Reference Wellbore	DD	Database:	USA EDM 5000 Multi Users DB
Reference Design:	Plan #1	Offset TVD Reference:	Offset Datum

Offset Design S27-T4S-R96W (M27 496) - 8515C-27 M27 496 - DD - Plan #1													Offset Site Error:	0.0 ft
Survey Program: 0-MWD													Offset Well Error:	0.0 ft
Reference		Offset		Semi Major Axis			Distance							Warning
Measured Depth (ft)	Vertical Depth (ft)	Measured Depth (ft)	Vertical Depth (ft)	Reference (ft)	Offset (ft)	Highside Toolface (°)	Offset Wellbore Centre +N/-S (ft)	+E/-W (ft)	Between Centres (ft)	Between Ellipses (ft)	Total Uncertainty Axis	Separation Factor		
0.0	0.0	0.0	0.0	0.0	0.0	60.10	4.0	7.0	8.1					
100.0	100.0	100.0	100.0	0.1	0.1	60.10	4.0	7.0	8.1	7.8	0.27	29.818		
200.0	200.0	200.0	200.0	0.3	0.3	60.10	4.0	7.0	8.1	7.5	0.62	13.066		
300.0	300.0	300.0	300.0	0.5	0.5	60.10	4.0	7.0	8.1	7.1	0.97	8.366 CC, ES		
400.0	400.0	399.5	399.5	0.7	0.7	66.39	4.2	9.6	10.5	9.2	1.32	7.938 SF		
500.0	500.0	498.5	498.2	0.8	0.9	74.88	4.7	17.3	18.0	16.3	1.71	10.559		
600.0	600.0	596.7	595.5	1.0	1.1	9.50	5.5	30.0	29.1	27.1	2.01	14.457		
700.0	699.8	694.0	691.2	1.2	1.5	13.26	6.5	47.5	42.0	39.6	2.36	17.813		
800.0	799.5	790.3	784.9	1.4	1.9	15.93	7.9	69.5	57.6	54.9	2.70	21.319		
900.0	899.2	884.8	875.7	1.6	2.4	17.37	9.5	95.7	78.1	75.0	3.05	25.634		
1,000.0	998.9	977.2	963.1	1.8	3.0	18.09	11.4	125.6	103.4	100.0	3.39	30.503		
1,100.0	1,098.6	1,067.3	1,046.8	2.0	3.6	18.43	13.4	158.8	133.3	129.5	3.73	35.740		
1,200.0	1,198.3	1,162.1	1,134.1	2.2	4.3	18.61	15.7	195.6	165.2	161.1	4.08	40.527		
1,300.0	1,298.0	1,256.8	1,221.4	2.4	5.0	18.74	17.9	232.4	197.1	192.7	4.42	44.560		

Anticollision Report

Company:	EnCana Oil & Gas (USA) Inc	Local Co-ordinate Reference:	Well 8514C-27 M27 496
Project:	Story Gulch	TVD Reference:	KBE @ 8121.0ft (Original Well Elev)
Reference Site:	S27-T4S-R96W (M27 496)	MD Reference:	KBE @ 8121.0ft (Original Well Elev)
Site Error:	0.0ft	North Reference:	True
Reference Well:	8514C-27 M27 496	Survey Calculation Method:	Minimum Curvature
Well Error:	0.0ft	Output errors are at	2.00 sigma
Reference Wellbore	DD	Database:	USA EDM 5000 Multi Users DB
Reference Design:	Plan #1	Offset TVD Reference:	Offset Datum

Offset Design												S27-T4S-R96W (M27 496) - 8515D-27 M27 496 - DD - Plan #1		Offset Site Error:		0.0 ft			
Survey Program:												0-MWD				Offset Well Error:		0.0 ft	
Reference		Offset		Semi Major Axis			Distance												
Measured Depth	Vertical Depth	Measured Depth	Vertical Depth	Reference	Offset	Highside Toolface	Offset Wellbore Centre		Between Centres	Between Ellipses	Total Uncertainty	Separation			Warning				
Depth (ft)	Depth (ft)	Depth (ft)	Depth (ft)	(ft)	(ft)	(°)	+N/-S (ft)	+E/-W (ft)	(ft)	(ft)	Axis	Factor							
0.0	0.0	0.0	0.0	0.0	0.0	105.50	-3.0	10.9	11.4										
100.0	100.0	100.0	100.0	0.1	0.1	105.50	-3.0	10.9	11.4	11.1	0.27	41.726							
200.0	200.0	200.0	200.0	0.3	0.3	105.50	-3.0	10.9	11.4	10.7	0.62	18.284	CC, ES						
300.0	300.0	299.3	299.3	0.5	0.5	102.68	-3.0	13.5	13.9	12.9	0.98	14.237	SF						
400.0	400.0	398.1	397.8	0.7	0.7	98.23	-3.1	21.2	21.6	20.2	1.36	15.856							
500.0	500.0	495.9	494.7	0.8	1.0	95.26	-3.1	33.8	34.4	32.6	1.80	19.132							
600.0	600.0	592.4	589.7	1.0	1.3	23.51	-3.2	51.1	50.7	48.7	2.01	25.250							
700.0	699.8	687.8	682.5	1.2	1.8	23.75	-3.2	72.9	68.8	66.4	2.35	29.234							
800.0	799.5	781.8	772.8	1.4	2.3	24.33	-3.3	98.9	89.5	86.8	2.70	33.131							
900.0	899.2	873.6	859.7	1.6	2.9	24.51	-3.4	128.5	114.8	111.8	3.05	37.672							
1,000.0	998.9	963.8	943.6	1.8	3.5	24.46	-3.5	161.6	144.7	141.3	3.39	42.647							
1,100.0	1,098.6	1,058.7	1,031.2	2.0	4.2	24.38	-3.7	198.1	176.2	172.5	3.74	47.060							

Anticollision Report

Company:	EnCana Oil & Gas (USA) Inc	Local Co-ordinate Reference:	Well 8514C-27 M27 496
Project:	Story Gulch	TVD Reference:	KBE @ 8121.0ft (Original Well Elev)
Reference Site:	S27-T4S-R96W (M27 496)	MD Reference:	KBE @ 8121.0ft (Original Well Elev)
Site Error:	0.0ft	North Reference:	True
Reference Well:	8514C-27 M27 496	Survey Calculation Method:	Minimum Curvature
Well Error:	0.0ft	Output errors are at	2.00 sigma
Reference Wellbore	DD	Database:	USA EDM 5000 Multi Users DB
Reference Design:	Plan #1	Offset TVD Reference:	Offset Datum

Offset Design S27-T4S-R96W (M27 496) - 8515E-27 M27 496 - DD - Plan #1												Offset Site Error: 0.0 ft			
Survey Program: 0-MWD														Offset Well Error: 0.0 ft	
Reference		Offset		Semi Major Axis			Distance								Warning
Measured Depth (ft)	Vertical Depth (ft)	Measured Depth (ft)	Vertical Depth (ft)	Reference (ft)	Offset (ft)	Highside Toolface (°)	Offset Wellbore Centre +N/-S (ft)	+E/-W (ft)	Between Centres (ft)	Between Ellipses (ft)	Total Uncertainty Axis	Separation Factor			
0.0	0.0	0.0	0.0	0.0	0.0	136.26	-21.2	20.3	29.4						
100.0	100.0	100.0	100.0	0.1	0.1	136.26	-21.2	20.3	29.4	29.1	0.27	108.012			
200.0	200.0	200.0	200.0	0.3	0.3	136.26	-21.2	20.3	29.4	28.8	0.62	47.331			
300.0	300.0	300.0	300.0	0.5	0.5	136.26	-21.2	20.3	29.4	28.4	0.97	30.306	CC, ES		
400.0	400.0	398.8	398.7	0.7	0.7	133.10	-21.4	22.9	31.4	30.0	1.32	23.777			
500.0	500.0	497.1	496.7	0.8	0.9	125.72	-21.9	30.5	37.7	36.0	1.68	22.416	SF		
600.0	600.0	594.5	593.3	1.0	1.1	48.56	-22.7	42.9	47.9	45.8	2.04	23.520			
700.0	699.8	691.1	688.4	1.2	1.5	44.87	-23.8	60.2	60.7	58.3	2.40	25.246			
800.0	799.5	786.6	781.4	1.4	1.9	42.56	-25.2	81.9	76.5	73.8	2.78	27.513			
900.0	899.2	880.4	871.5	1.6	2.4	40.25	-26.9	107.7	97.0	93.9	3.16	30.741			
1,000.0	998.9	972.0	958.3	1.8	2.9	38.16	-28.8	137.1	122.2	118.7	3.52	34.679			
1,100.0	1,098.6	1,063.1	1,042.9	2.0	3.6	36.35	-31.0	170.4	151.9	148.0	3.88	39.116			
1,200.0	1,198.3	1,155.7	1,128.3	2.2	4.2	34.95	-33.3	206.4	183.9	179.7	4.24	43.356			

Anticollision Report

Company:	EnCana Oil & Gas (USA) Inc	Local Co-ordinate Reference:	Well 8514C-27 M27 496
Project:	Story Gulch	TVD Reference:	KBE @ 8121.0ft (Original Well Elev)
Reference Site:	S27-T4S-R96W (M27 496)	MD Reference:	KBE @ 8121.0ft (Original Well Elev)
Site Error:	0.0ft	North Reference:	True
Reference Well:	8514C-27 M27 496	Survey Calculation Method:	Minimum Curvature
Well Error:	0.0ft	Output errors are at	2.00 sigma
Reference Wellbore	DD	Database:	USA EDM 5000 Multi Users DB
Reference Design:	Plan #1	Offset TVD Reference:	Offset Datum

Offset Design		S27-T4S-R96W (M27 496) - 8515F-27 M27 496 - DD - Plan #1											Offset Site Error:		0.0 ft		
Survey Program:		0-MWD											Offset Well Error:		0.0 ft		
Reference		Offset		Semi Major Axis			Distance										
Measured Depth	Vertical Depth	Measured Depth	Vertical Depth	Reference	Offset	Highside Toolface	Offset Wellbore Centre		Between Centres	Between Ellipses	Total Uncertainty	Separation	Warning				
Depth (ft)	Depth (ft)	Depth (ft)	Depth (ft)	(ft)	(ft)	(°)	+N/-S (ft)	+E/-W (ft)	(ft)	(ft)	Axis	Factor					
0.0	0.0	0.0	0.0	0.0	0.0	139.45	-28.3	24.2	37.3								
100.0	100.0	100.0	100.0	0.1	0.1	139.45	-28.3	24.2	37.3	37.0	0.27	136.947					
200.0	200.0	200.0	200.0	0.3	0.3	139.45	-28.3	24.2	37.3	36.7	0.62	60.011	CC, ES				
300.0	300.0	298.5	298.4	0.5	0.5	136.96	-28.7	26.8	39.2	38.3	0.97	40.453					
400.0	400.0	396.4	396.1	0.7	0.7	130.87	-29.6	34.3	45.5	44.1	1.33	34.096					
500.0	500.0	493.4	492.2	0.8	1.0	123.86	-31.2	46.5	56.6	54.9	1.74	32.573	SF				
600.0	600.0	589.1	586.4	1.0	1.3	47.90	-33.4	63.4	71.8	69.7	2.05	35.023					
700.0	699.8	683.7	678.5	1.2	1.7	44.96	-36.2	84.7	89.6	87.2	2.42	37.079					
800.0	799.5	776.8	768.1	1.4	2.2	43.28	-39.5	110.0	110.4	107.6	2.79	39.532					
900.0	899.2	867.8	854.3	1.6	2.8	41.69	-43.2	138.9	135.7	132.5	3.17	42.873					
1,000.0	998.9	956.7	937.0	1.8	3.4	40.24	-47.4	170.9	165.5	161.9	3.53	46.897					
1,100.0	1,098.6	1,051.1	1,024.2	2.0	4.1	39.00	-52.1	207.1	197.5	193.6	3.90	50.646					

Anticollision Report

Company:	EnCana Oil & Gas (USA) Inc	Local Co-ordinate Reference:	Well 8514C-27 M27 496
Project:	Story Gulch	TVD Reference:	KBE @ 8121.0ft (Original Well Elev)
Reference Site:	S27-T4S-R96W (M27 496)	MD Reference:	KBE @ 8121.0ft (Original Well Elev)
Site Error:	0.0ft	North Reference:	True
Reference Well:	8514C-27 M27 496	Survey Calculation Method:	Minimum Curvature
Well Error:	0.0ft	Output errors are at	2.00 sigma
Reference Wellbore	DD	Database:	USA EDM 5000 Multi Users DB
Reference Design:	Plan #1	Offset TVD Reference:	Offset Datum

Reference Depths are relative to KBE @ 8121.0ft (Original Well Elev)

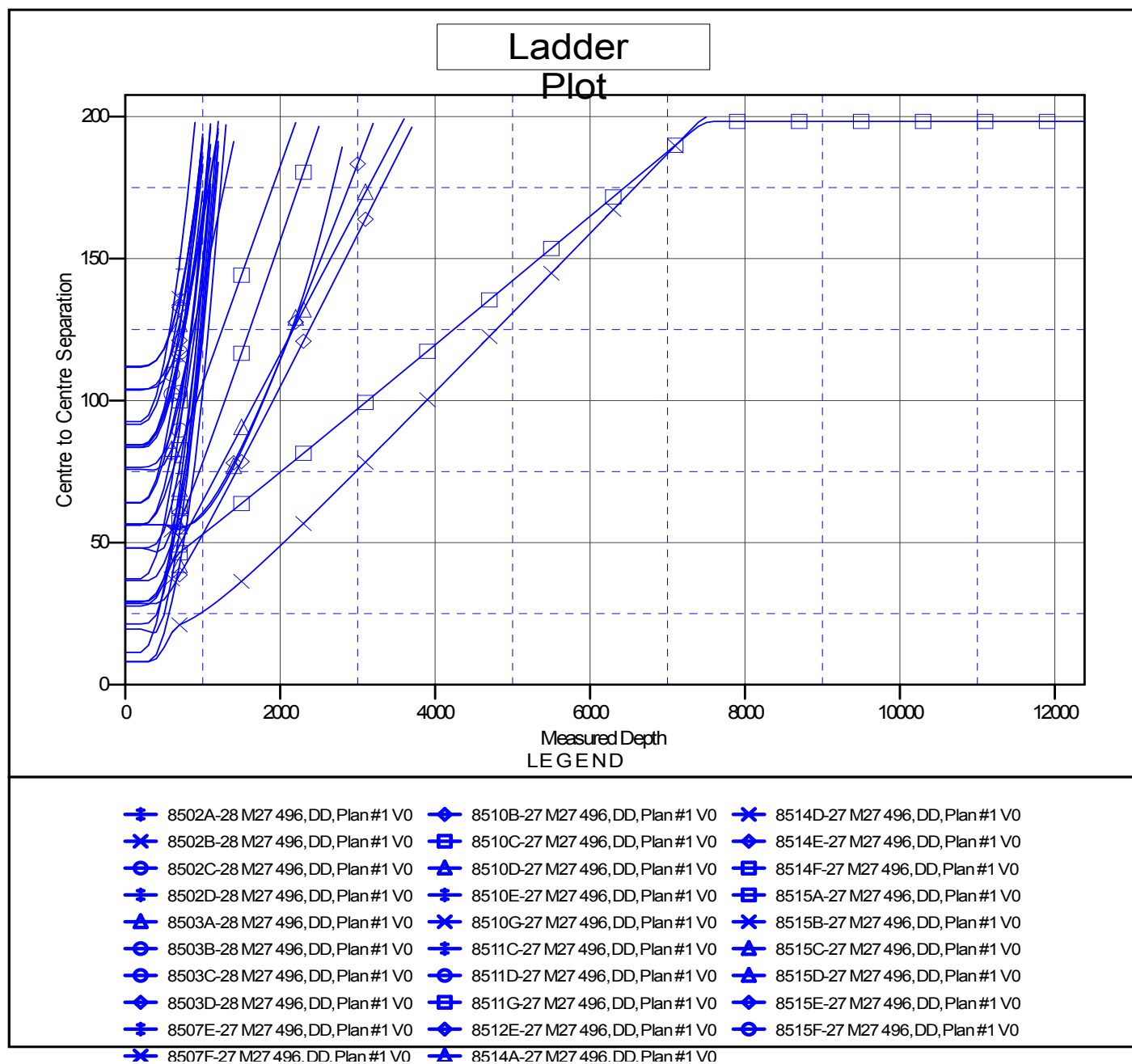
Offset Depths are relative to Offset Datum

Central Meridian is 105° 30' 0.00 W °

Coordinates are relative to: 8514C-27 M27 496

Coordinate System is US State Plane 1983, Colorado Central Zone

Grid Convergence at Surface is: -1.68°



CC - Min centre to center distance or convergent point, SF - min separation factor, ES - min ellipse separation