

Erin Bibeau
Regulatory Compliance Representative
DJ Basin



4557 Denrose Ct.
Ft. Collins, CO 80524
Telephone 970.419.7816 Mobile 970.219.8703
Fax 970.493.9219
ebibeau@marathonoil.com

January 19, 2012

David Bauer
Weld County
1111 H Street
Greeley, CO 80632

Re: 30 Day Notice Requirement (Rule 305)
Advance Notice of Drilling Operations

Crow Valley 7-62-34-2H Well
NENW Section 34, Township 7N, Range 62W
455' FNL and 1862' FWL
Weld County, Colorado

Crow Valley 7-62-27-2H Well
NENW Section 34, Township 7N, Range 62W
486' FNL and 1836' FWL
Weld County, Colorado

Dear Mr. Bauer:

Marathon Oil Company ("Marathon") is filing Applications for Permit to Drill with the Colorado Oil and Gas Conservation Commission for the above referenced wells.

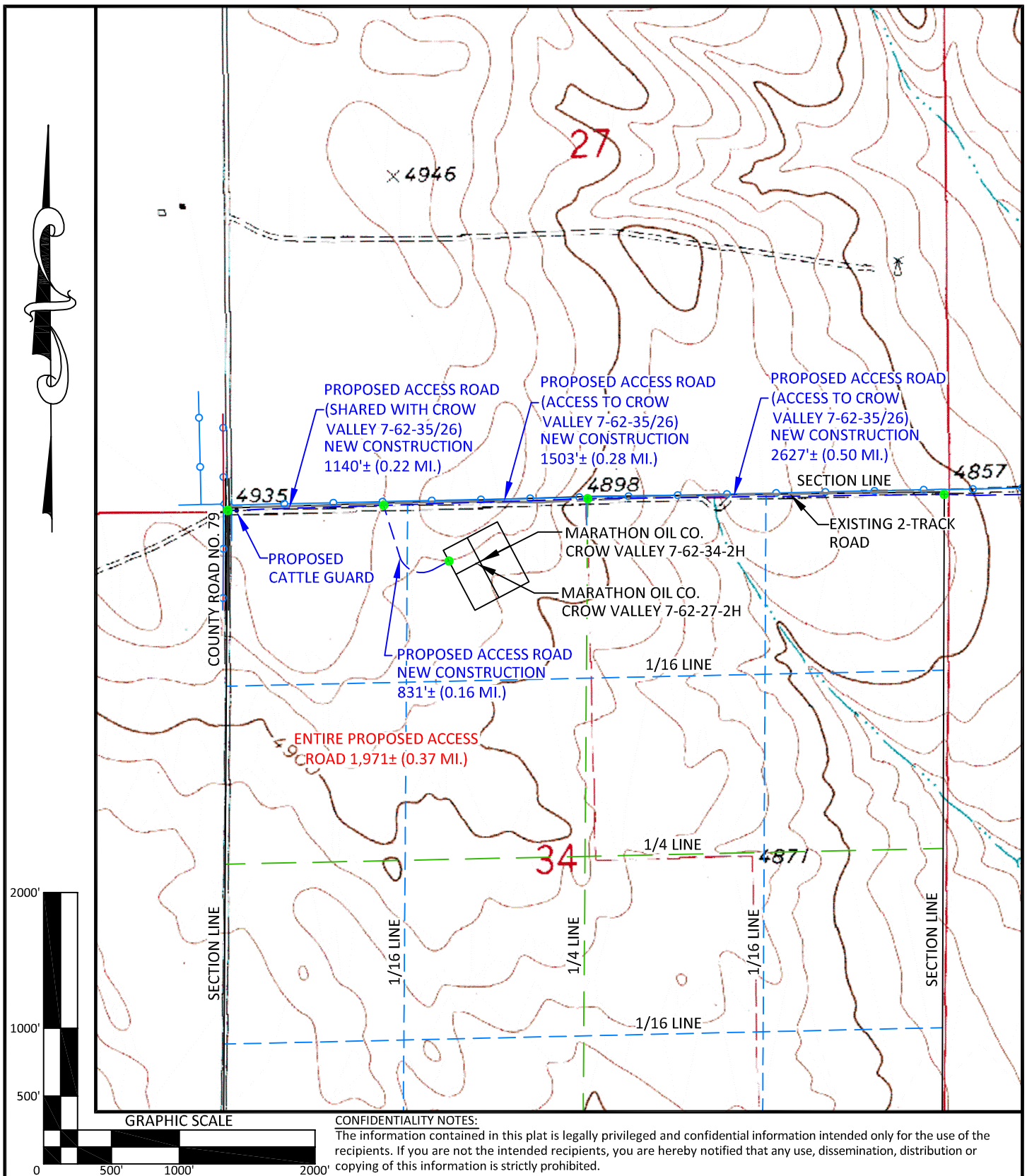
The enclosed notification, pursuant to Rule 305, is required as part of the filing process. Please contact Tyler Sims, Marathon Land Representative, at 713-296-3942 if you have any questions.

Sincerely,

A handwritten signature in blue ink, appearing to read 'E. K. Bibeau', written over a horizontal line.

Erin Bibeau
Regulatory Compliance Rep.

Enclosures: Well Location Plat
Pad & Road Location Plats



**WILLIAM H. SMITH
& ASSOCIATES P.C.**

SURVEYING CONSULTANTS
550 EAST SECOND NORTH PHONE: 307-875-3638
GREEN RIVER, WY 307-875-3639
www.whsmithpc.com

DRAWN BY: LAL

CHECKED BY: RAW

PROJECT NO: 762342H

JOB NO: 2011001

REVISIONS: 1/16/2012 REVISE ACCESS ROAD LOCATION

LEGEND

PROPOSED ACCESS ————
EXISTING 2-TRACK ————
EXISTING ROAD ————
1/16 LINE ————
1/4 LINE ————
SECTION LINE ————

LOCATION:

CROW VALLEY
7-62-34-2H &
7-62-27-2H
WITHIN THE NE ¼ NW ¼
SECTION 34
T 7 N, R 62 W,
6TH PM.
WELD COUNTY,
COLORADO

MARATHON OIL COMPANY
PO BOX 3128, HOUSTON TX, 77253
5555 SAN FELIPE, HOUSTON TX, 77056

ACCESS ROAD MAP

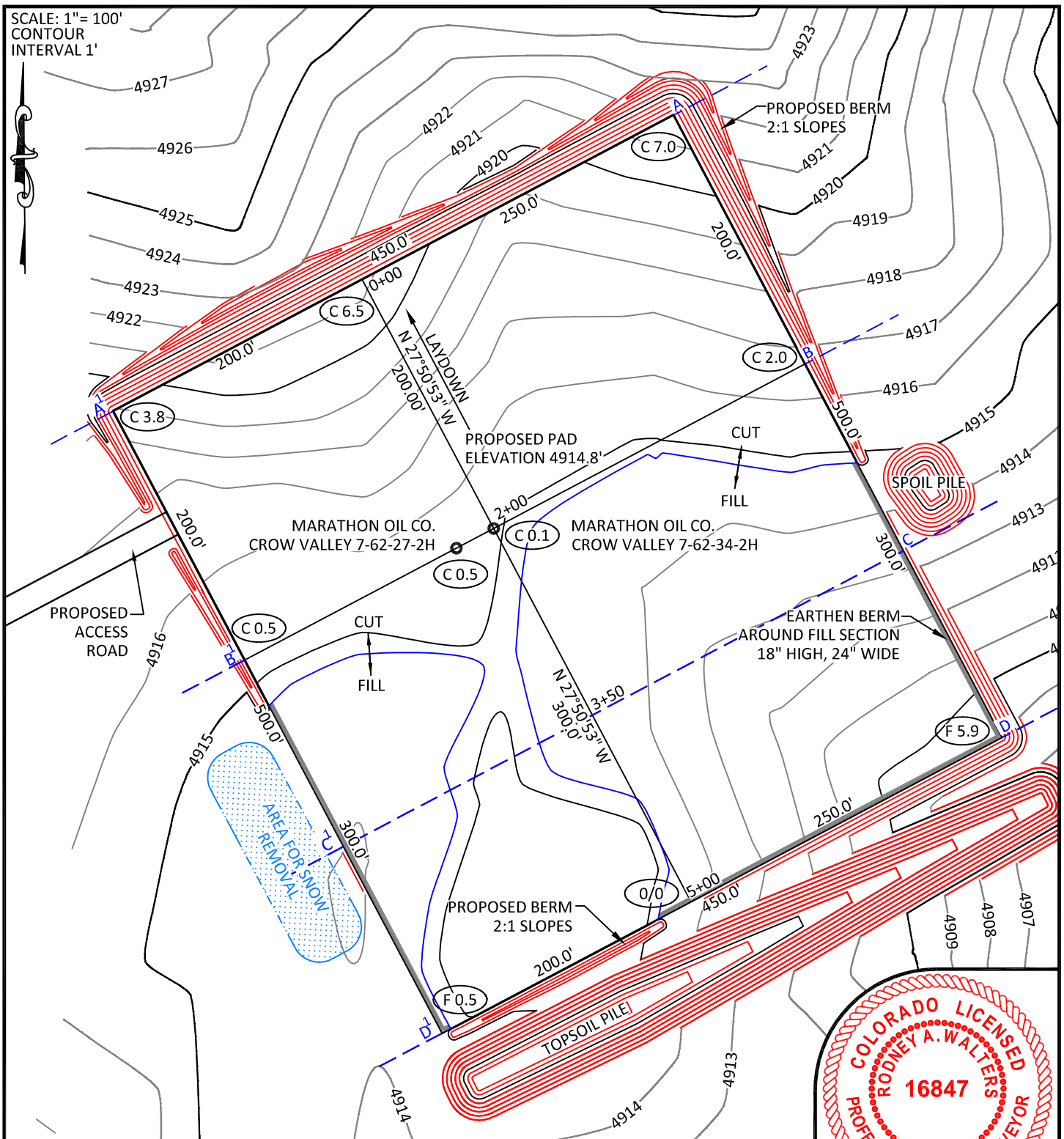
SCALE: 1"=1000'

EXHIBIT "E"

01/10/2012

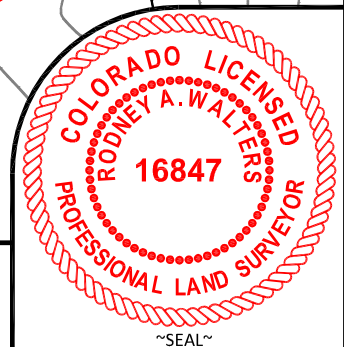
SHEET 4 OF 15

SCALE: 1"= 100'
CONTOUR
INTERVAL 1'



NOTES:

- Elevation of pad shown on plans are to constructed pad without final gravel padding placement. Depth, volume, and padding material to be determined by operator.
- The information contained in this plat is legally privileged and confidential information intended only for the use of the recipients. If you are not the intended recipients, you are hereby notified that any use, dissemination, distribution or copying of this information is strictly prohibited.



**WILLIAM H. SMITH
& ASSOCIATES P.C.**

SURVEYING CONSULTANTS
550 EAST SECOND NORTH PHONE: 307-875-3638
GREEN RIVER, WY 307-875-3639
www.whsmithpc.com

CONSTRUCTION DATA

CUT SLOPE:	3:1
FILL SLOPE:	3:1
TOTAL CUT:	12,965 CU. YDS.
TOTAL FILL:	8,054 CU. YDS.
TOP SOIL AT 6"	4,703 CU. YDS.
SPOIL	209 CU. YDS.
DISTURBED AREA	253,963 SQ. FT.
DISTURBED AREA	5.83 ACRES

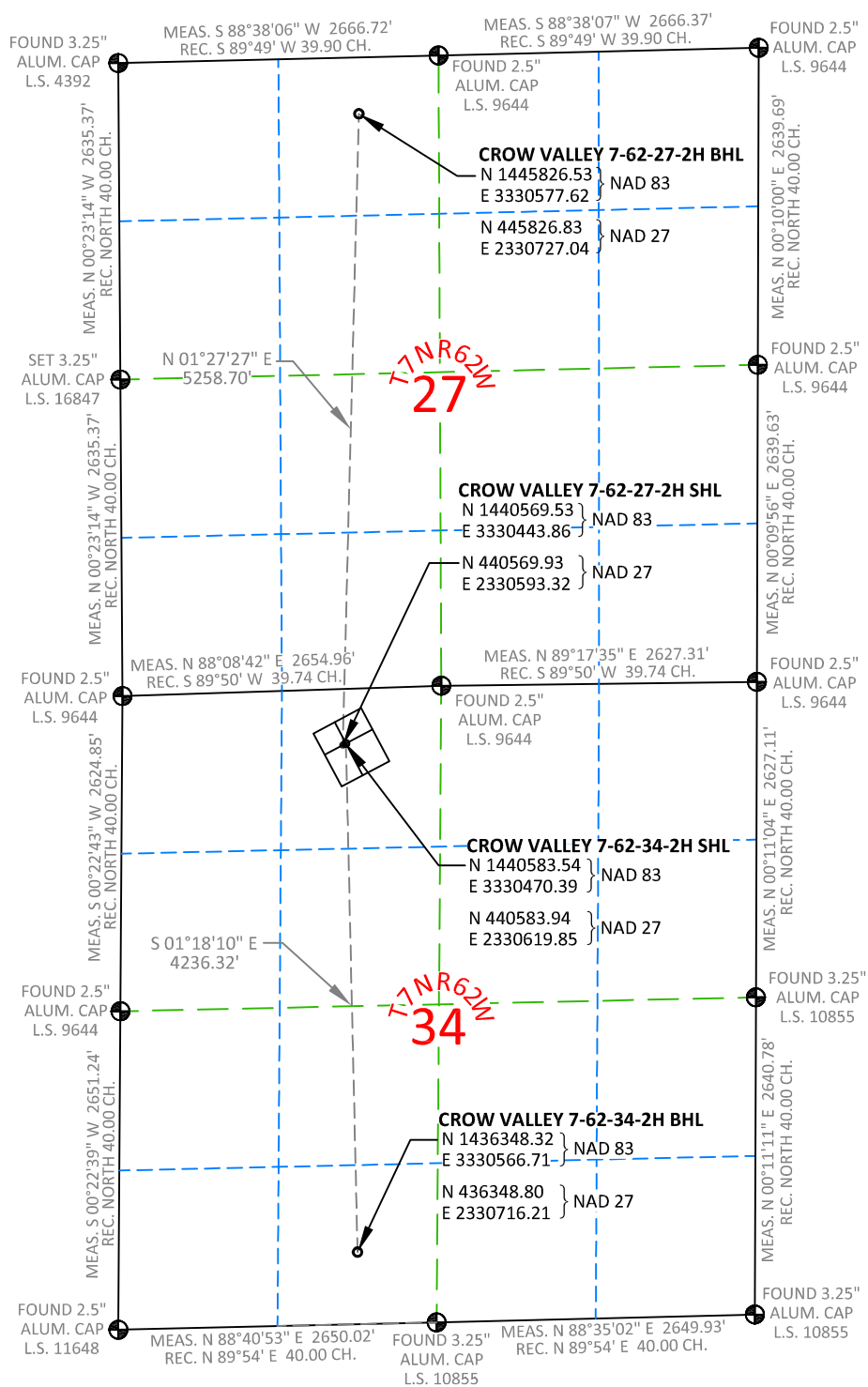
LOCATION:

CROW VALLEY
7-62-34-2H
NE ¼ OF THE NW
¼ OF SECTION 34,
T 7 N, R 62 W,
6TH PM.
WELD COUNTY,
COLORADO

MARATHON OIL COMPANY
PO BOX 3128, HOUSTON TX, 77253
5555 SAN FELIPE, HOUSTON TX, 77056

CONSTRUCTION LAYOUT

465' FNL	1862' FWL
SCALE: 1"=100'	EXHIBIT "I"
DATE: 1/3/12	SHEET 8 OF 15



- All bearings and distances are **GRID**, based on the Colorado State Plane Coordinate System, North Zone, North American Datum 1983 from GPS observations occupying a WHS control point (5/8" rebar) and having the Location and Elevation derived from an Opus Solution.
- Vertical Datum used is of NAVD 88.
- Record Bearings and Distances as shown are based on the General Land Office Survey plat approved on the 16th day of December 1872.



The information contained in this plat is legally privileged and confidential information intended only for the use of the recipients. If you are not the intended recipients, you are hereby notified that any use, dissemination, distribution or copying of this information is strictly prohibited.

CROW VALLEY
7-62-27-2H &
7-62-34-2H
WITHIN THE NE1/4
NW1/4 SECTION 34,
T 7 N, R 62 W,
6TH PM.
WELD COUNTY,
COLORADO

SCALE: 1"=1500'	EXHIBIT "P"
DATE: 1/03/12	SHEET 15 OF 15