

CONFIDENTIALITY NOTES:

The information contained in this plat is legally privileged and confidential information intended only for the use of the recipients. If you are not the intended recipients, you are hereby notified that any use, dissemination, distribution or copying of this information is strictly prohibited.



**WILLIAM H. SMITH
& ASSOCIATES P.C.**
SURVEYING CONSULTANTS

650 EAST SECOND NORTH PHONE: 307-875-3638
GREEN RIVER, WY 307-875-3639
www.whsmithpc.com

DRAWN BY: LAL

CHECKED BY: RAW

PROJECT NO: 762342H

JOB NO: 2011001

REVISIONS:

LEGEND

400' PERIMETER
PROPOSED ACCESS
EXISTING 2-TRACK
EXISTING FENCE
SECTION LINE
1/16 LINE

LOCATION:

CROW VALLEY
7-62-34-2H &
7-62-27-2H
WITHIN THE NE ¼ NW ¼
SECTION 34
T 7 N, R 62 W,
6TH PM.
WELD COUNTY,
COLORADO

MARATHON OIL COMPANY
PO BOX 3128, HOUSTON TX, 77253
5555 SAN FELIPE, HOUSTON TX, 77056

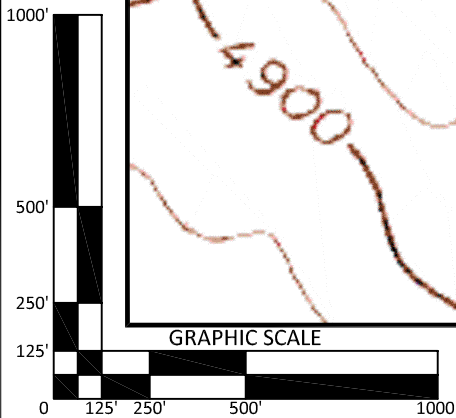
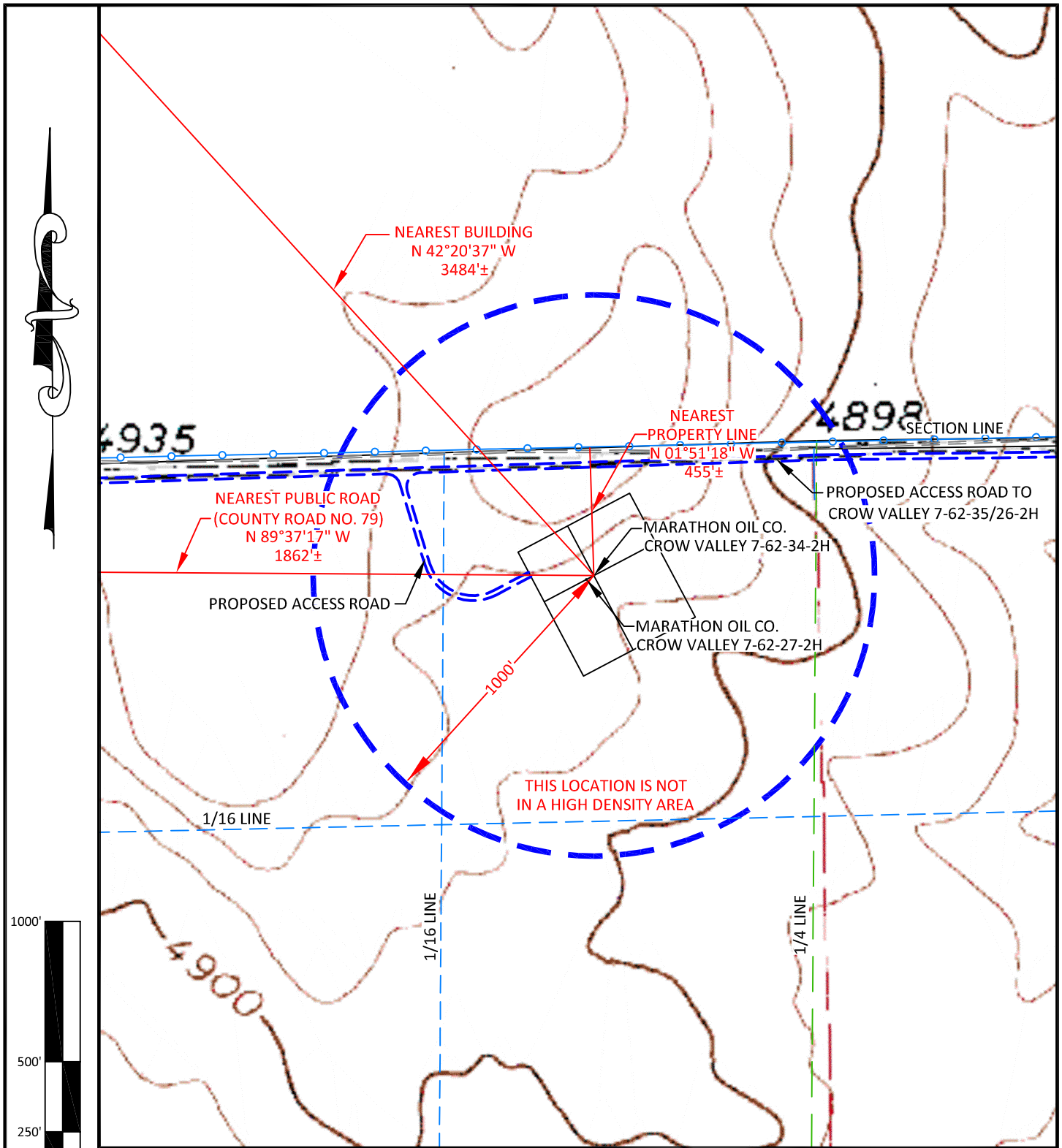
LOCATION DRAWING

SCALE: 1"=200'

DATE: 01/10/2012

EXHIBIT "C"

SHEET 2 OF 15



CONFIDENTIALITY NOTES:
The information contained in this plat is legally privileged and confidential information intended only for the use of the recipients. If you are not the intended recipients, you are hereby notified that any use, dissemination, distribution or copying of this information is strictly prohibited.



**WILLIAM H. SMITH
& ASSOCIATES P.C.**

SURVEYING CONSULTANTS
550 EAST SECOND NORTH PHONE: 307-875-3638
GREEN RIVER, WY 307-875-3639
www.whsmithpc.com

DRAWN BY: LAL CHECKED BY: RAW
PROJECT NO: 762342H JOB NO: 2011001
REVISIONS:

LEGEND

1000' RADIUS
PROPOSED ACCESS
EXISTING 2-TRACK
FENCE
1/16 LINE
1/4 LINE
SECTION LINE

LOCATION:

CROW VALLEY
7-62-34-2H &
7-62-27-2H
WITHIN THE NE 1/4 NW 1/4
SECTION 34
T 7 N, R 62 W,
6TH PM.
WELD COUNTY,
COLORADO

MARATHON OIL COMPANY
PO BOX 3128, HOUSTON TX, 77253
5555 SAN FELIPE, HOUSTON TX, 77056

CULTURE MAP

SCALE: 1"=500'
DATE: 01/10/2012
EXHIBIT "H"
SHEET 7 OF 15