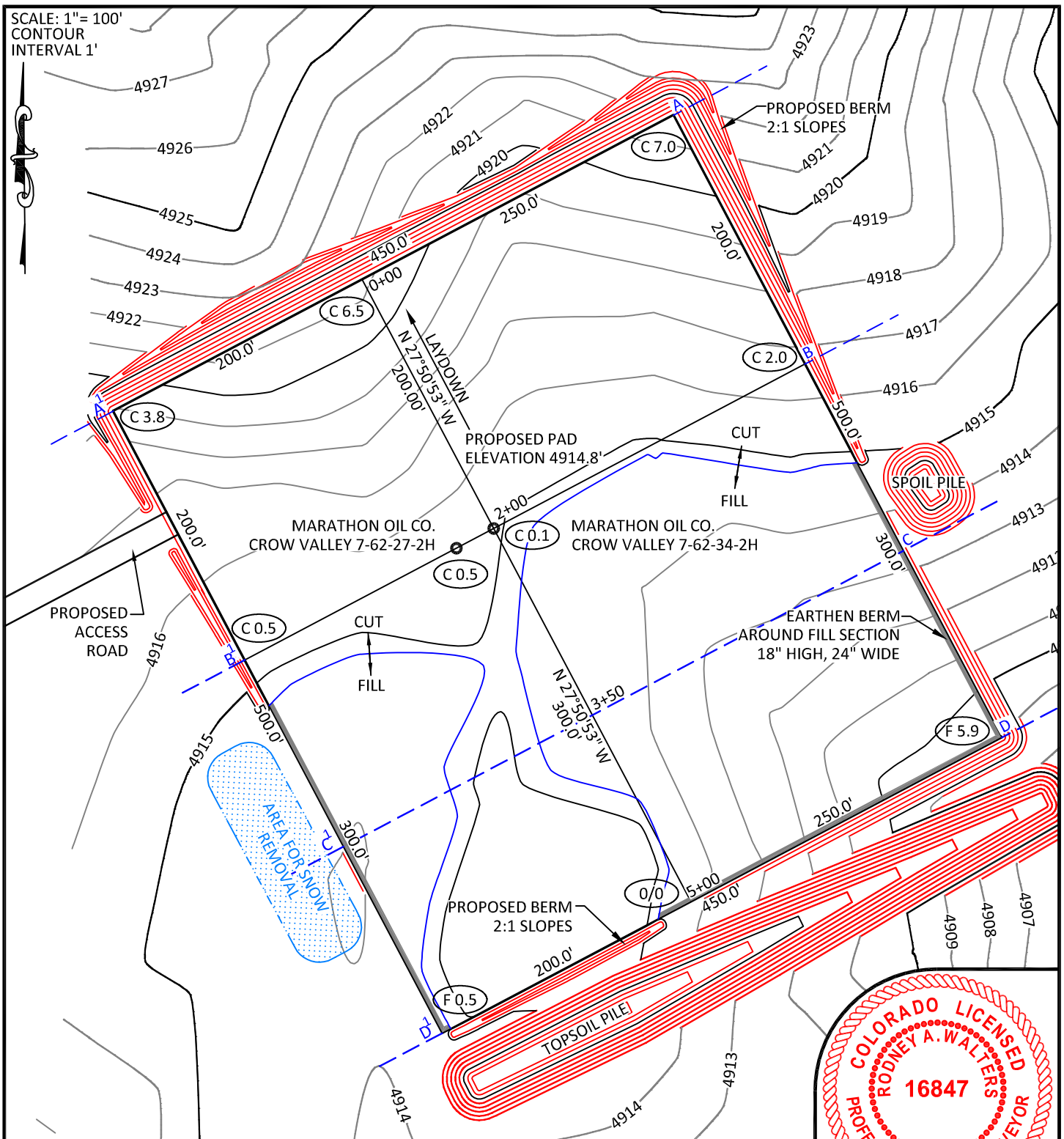
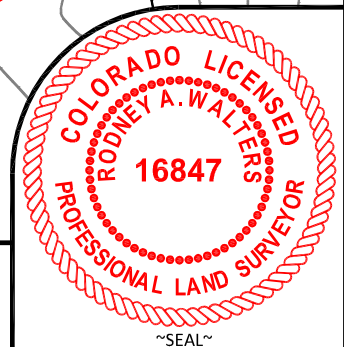


SCALE: 1"= 100'  
CONTOUR  
INTERVAL 1'



**NOTES:**

- Elevation of pad shown on plans are to constructed pad without final gravel padding placement. Depth, volume, and padding material to be determined by operator.
- The information contained in this plat is legally privileged and confidential information intended only for the use of the recipients. If you are not the intended recipients, you are hereby notified that any use, dissemination, distribution or copying of this information is strictly prohibited.



**WILLIAM H. SMITH  
& ASSOCIATES P.C.**

**SURVEYING CONSULTANTS**  
550 EAST SECOND NORTH PHONE: 307-875-3638  
GREEN RIVER, WY 307-875-3639  
www.whsmithpc.com

**CONSTRUCTION DATA**

CUT SLOPE:	3:1
FILL SLOPE:	3:1
TOTAL CUT:	12,965 CU. YDS.
TOTAL FILL:	8,054 CU. YDS.
TOP SOIL AT 6"	4,703 CU. YDS.
SPOIL	209 CU. YDS.
DISTURBED AREA	253,963 SQ. FT.
DISTURBED AREA	5.83 ACRES

**LOCATION:**

CROW VALLEY  
7-62-34-2H  
NE ¼ OF THE NW  
¼ OF SECTION 34,  
T 7 N, R 62 W,  
6TH PM.  
WELD COUNTY,  
COLORADO

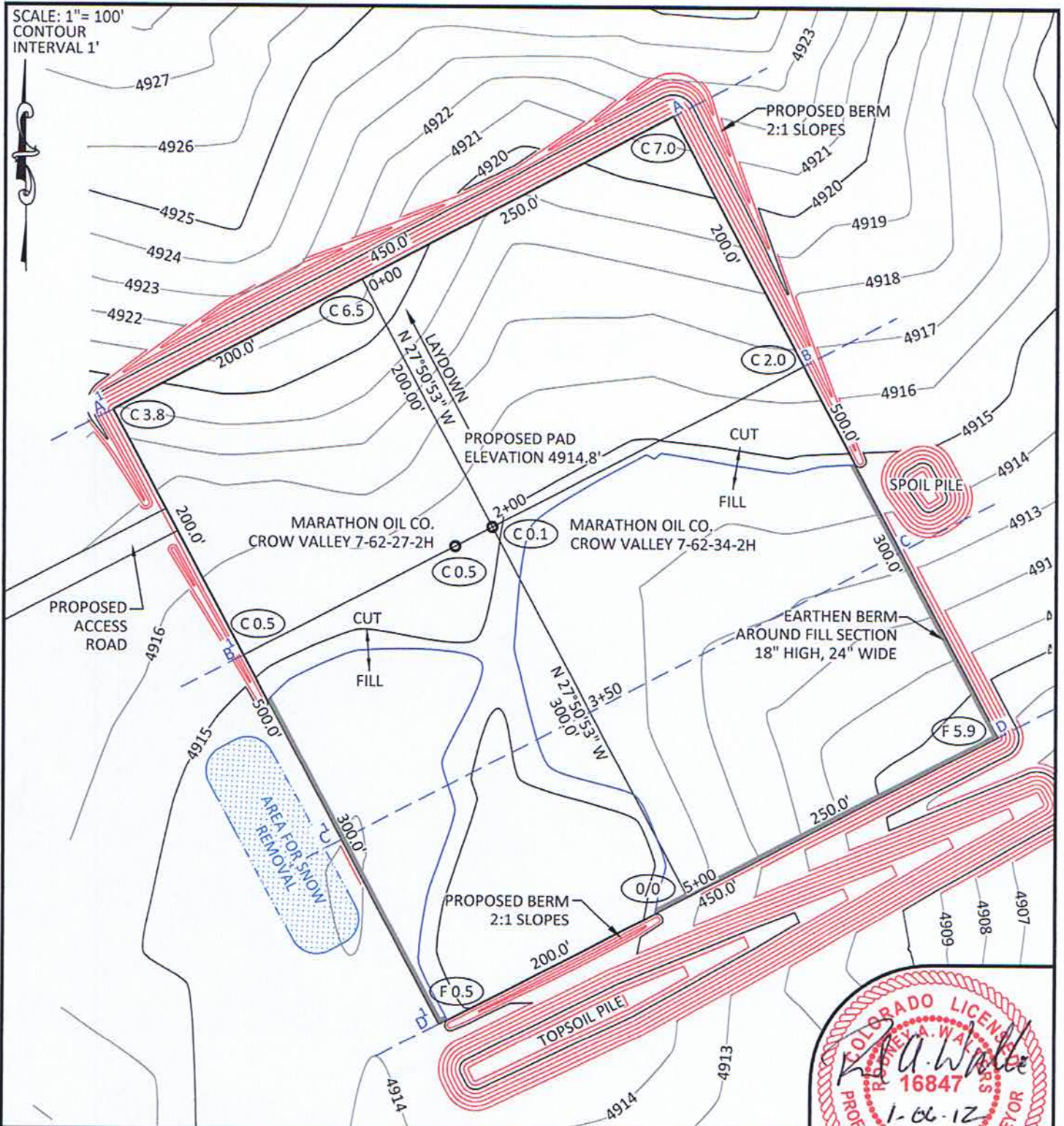
**MARATHON OIL COMPANY**  
PO BOX 3128, HOUSTON TX, 77253  
5555 SAN FELIPE, HOUSTON TX, 77056

**CONSTRUCTION LAYOUT**

465' FNL	1862' FWL
SCALE: 1"=100'	EXHIBIT "I"
DATE: 1/3/12	SHEET 8 OF 15



SCALE: 1" = 100'  
CONTOUR  
INTERVAL 1'



#### NOTES:

- Elevation of pad shown on plans are to constructed pad without final gravel padding placement. Depth, volume, and padding material to be determined by operator.
- The information contained in this plat is legally privileged and confidential information intended only for the use of the recipients. If you are not the intended recipients, you are hereby notified that any use, dissemination, distribution or copying of this information is strictly prohibited.



**WILLIAM H. SMITH  
& ASSOCIATES P.C.**  
SURVEYING CONSULTANTS

550 EAST SECOND NORTH PHONE: 307-875-3638  
GREEN RIVER, WY 307-875-3639  
www.whsmithpc.com

DRAWN BY: LAL CHECKED BY: RAW  
PROJECT NO: 762342H JOB NO: 2011001  
REVISIONS:

#### CONSTRUCTION DATA

CUT SLOPE:	3:1
FILL SLOPE:	3:1
TOTAL CUT:	12,965 CU. YDS.
TOTAL FILL:	8,054 CU. YDS.
TOP SOIL AT 6"	4,703 CU. YDS.
SPOIL:	209 CU. YDS.
DISTURBED AREA	253,963 SQ. FT.
DISTURBED AREA	5.83 ACRES

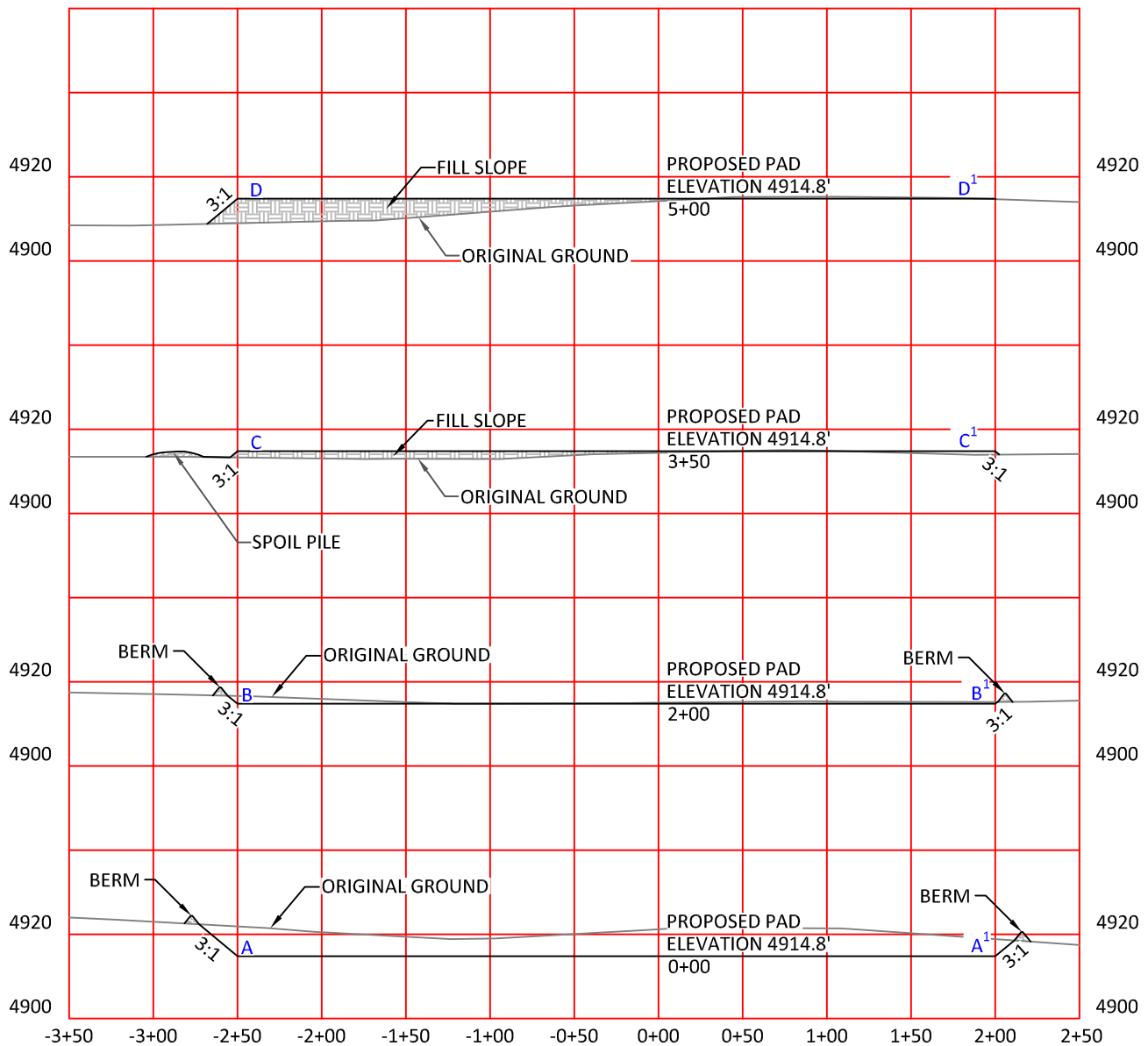
#### LOCATION:

CROW VALLEY  
7-62-34-2H  
NE ¼ OF THE NW  
¼ OF SECTION 34,  
T 7 N, R 62 W,  
6TH PM.  
WELD COUNTY,  
COLORADO

**MARATHON OIL COMPANY**  
PO BOX 3128, HOUSTON TX, 77253  
5555 SAN FELIPE, HOUSTON TX, 77056

#### CONSTRUCTION LAYOUT

465' FNL	1862' FWL
SCALE: 1"=100'	EXHIBIT "I"
DATE: 1/3/12	SHEET 8 OF 15



HORIZONTAL SCALE: 1"=100' - VERTICAL SCALE: 1"=40'

**NOTES:**

Elevation of pad shown on plans is to constructed pad without final gravel padding placement. Depth, volume, and padding material to be determined by operator.

The information contained in this plat is legally privileged and confidential information intended only for the use of the recipients. If you are not the intended recipients, you are hereby notified that any use, dissemination, distribution or copying of this information is strictly prohibited.



**WILLIAM H. SMITH  
& ASSOCIATES P.C.**

**SURVEYING CONSULTANTS**  
550 EAST SECOND NORTH PHONE: 307-875-3638  
GREEN RIVER, WY 307-875-3639  
www.whsmithpc.com

DRAWN BY: LAL	CHECKED BY: RAW
PROJECT NO: 762342H	JOB NO: 2011001
REVISIONS:	

**CONSTRUCTION DATA**

CUT SLOPE:	3:1
FILL SLOPE:	3:1
TOTAL CUT:	12,965 CU. YDS.
TOTAL FILL:	8,054 CU. YDS.
TOP SOIL AT 6"	4,703 CU. YDS.
SPOIL	209 CU. YDS.
DISTURBED AREA	253,963 SQ. FT.
DISTURBED AREA	5.83 ACRES

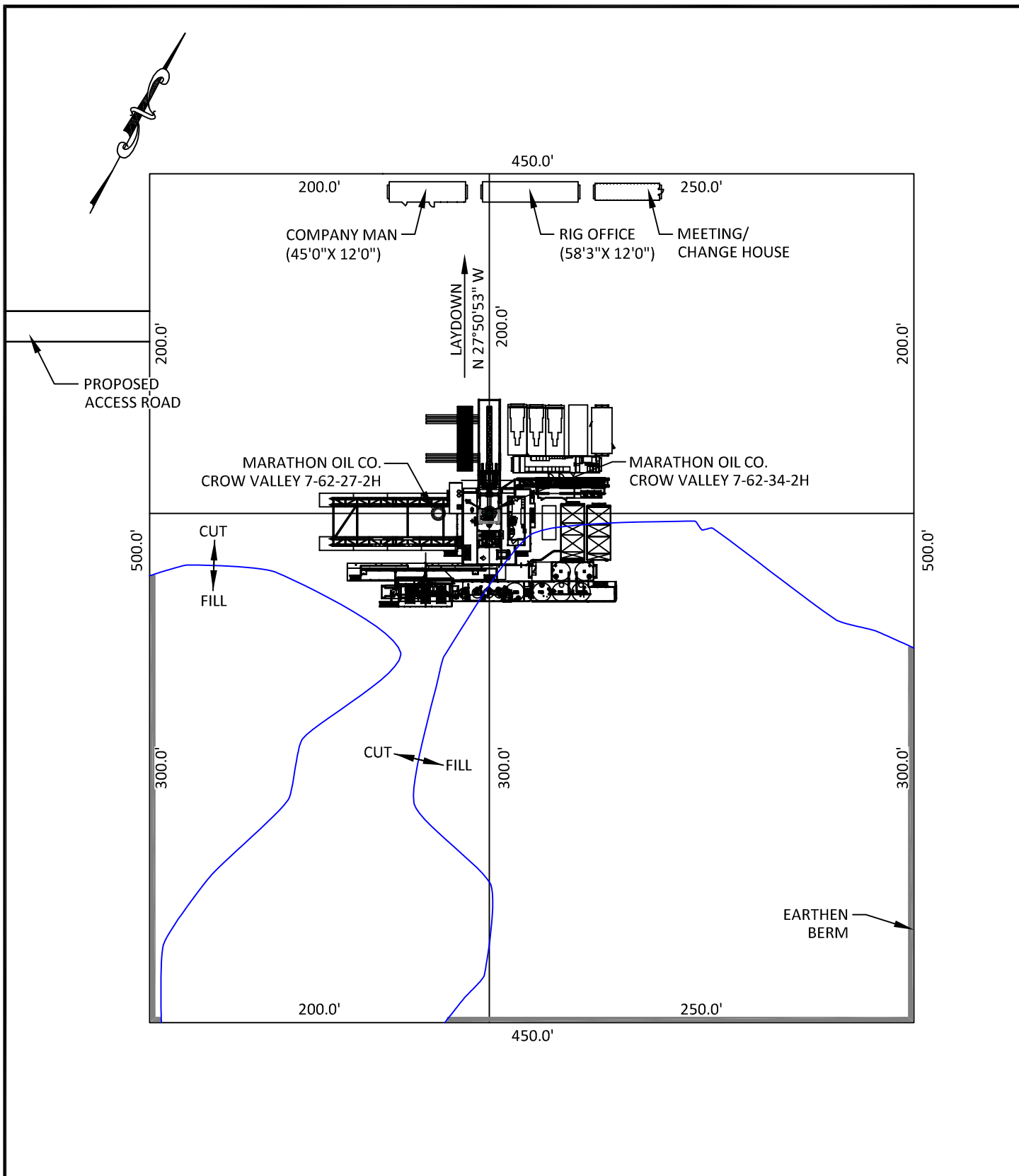
**LOCATION:**

CROW VALLEY  
7-62-34-2H  
NE ¼ OF THE NW  
¼ OF SECTION 34,  
T 7 N, R 62 W,  
6TH PM.  
WELD COUNTY,  
COLORADO

**MARATHON OIL COMPANY**  
PO BOX 3128, HOUSTON TX, 77253  
5555 SAN FELIPE, HOUSTON TX, 77056

**CONSTRUCTION LAYOUT  
CROSS SECTIONS**

SCALE: NOTED	EXHIBIT "J"
DATE: 1/3/12	SHEET 9 OF 15



**WILLIAM H. SMITH  
& ASSOCIATES P.C.**

**SURVEYING CONSULTANTS**  
550 EAST SECOND NORTH PHONE: 307-875-3638  
GREEN RIVER, WY 307-875-3639  
www.whsmithpc.com

DRAWN BY: LAL

CHECKED BY: RAW

PROJECT NO: 762342H

JOB NO: 2011001

REVISIONS:

**CONFIDENTIALITY NOTES:**

The information contained in this plat is legally privileged and confidential information intended only for the use of the recipients. If you are not the intended recipients, you are hereby notified that any use, dissemination, distribution or copying of this information is strictly prohibited.

**LOCATION:**

CROW VALLEY  
7-62-34-2H  
NE ¼ OF THE NW  
¼ OF SECTION 34,  
T 7 N, R 62 W,  
6TH PM.  
WELD COUNTY,  
COLORADO

**MARATHON OIL COMPANY**

PO BOX 3128, HOUSTON TX, 77253  
5555 SAN FELIPE, HOUSTON TX, 77056

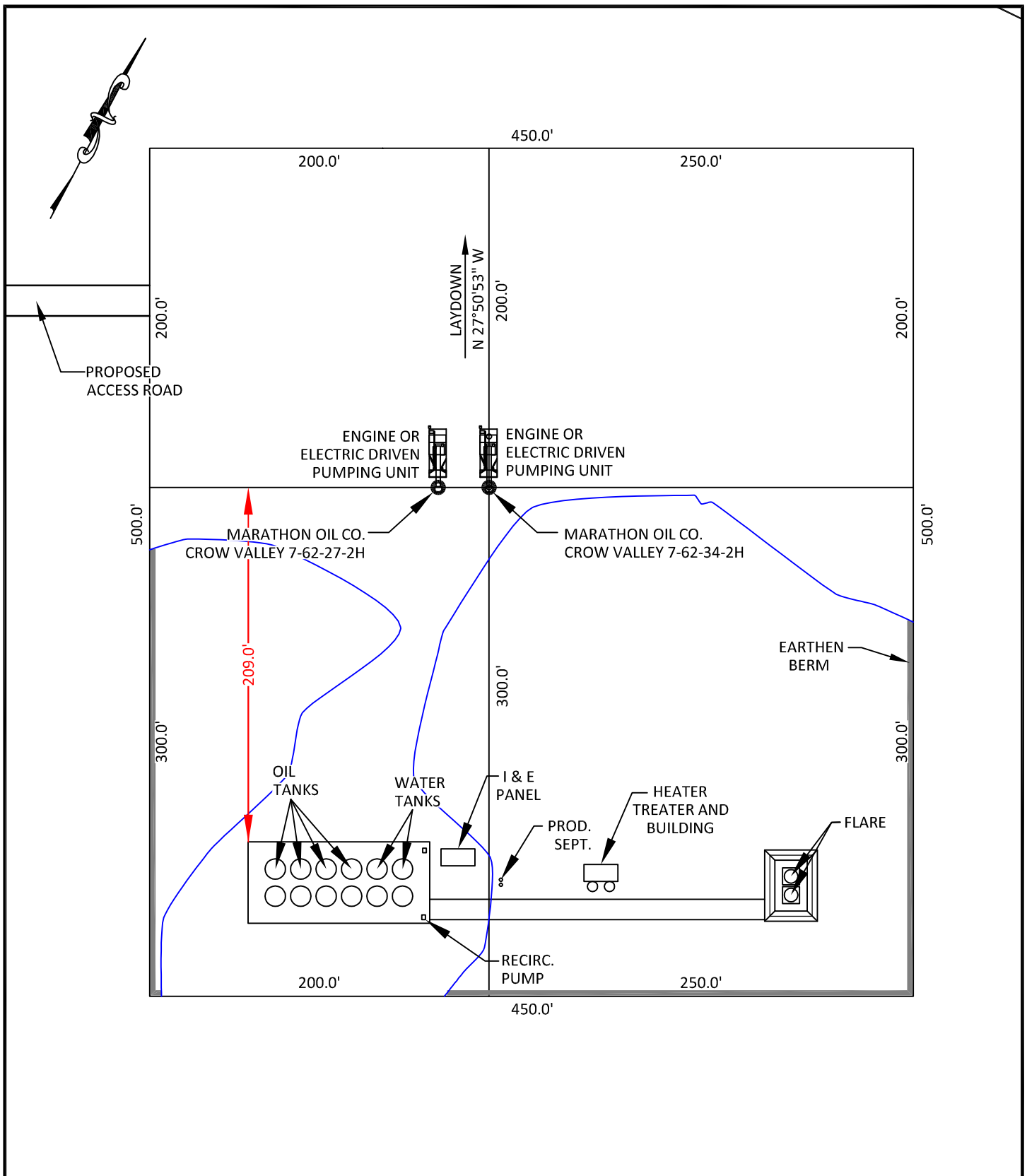
**DRILLING FACILITIES**

SCALE: 1"=80'

EXHIBIT "K"

DATE: 1/3/12

SHEET 10 OF 15



**WILLIAM H. SMITH  
& ASSOCIATES P.C.**

**SURVEYING CONSULTANTS**  
550 EAST SECOND NORTH PHONE: 307-875-3638  
GREEN RIVER, WY 307-875-3639  
www.whsmithpc.com

DRAWN BY: LAL CHECKED BY: RAW  
PROJECT NO: 762342H JOB NO: 2011001  
REVISIONS:

**CONFIDENTIALITY NOTES:**

The information contained in this plat is legally privileged and confidential information intended only for the use of the recipients. If you are not the intended recipients, you are hereby notified that any use, dissemination, distribution or copying of this information is strictly prohibited.

**LOCATION:**

CROW VALLEY  
7-62-34-2H  
NE ¼ OF THE NW  
¼ OF SECTION 34,  
T 7 N, R 62 W,  
6TH PM.  
WELD COUNTY,  
COLORADO

**MARATHON OIL COMPANY**  
PO BOX 3128, HOUSTON TX, 77253  
5555 SAN FELIPE, HOUSTON TX, 77056

**PRODUCTION FACILITIES**

SCALE: 1"=80'

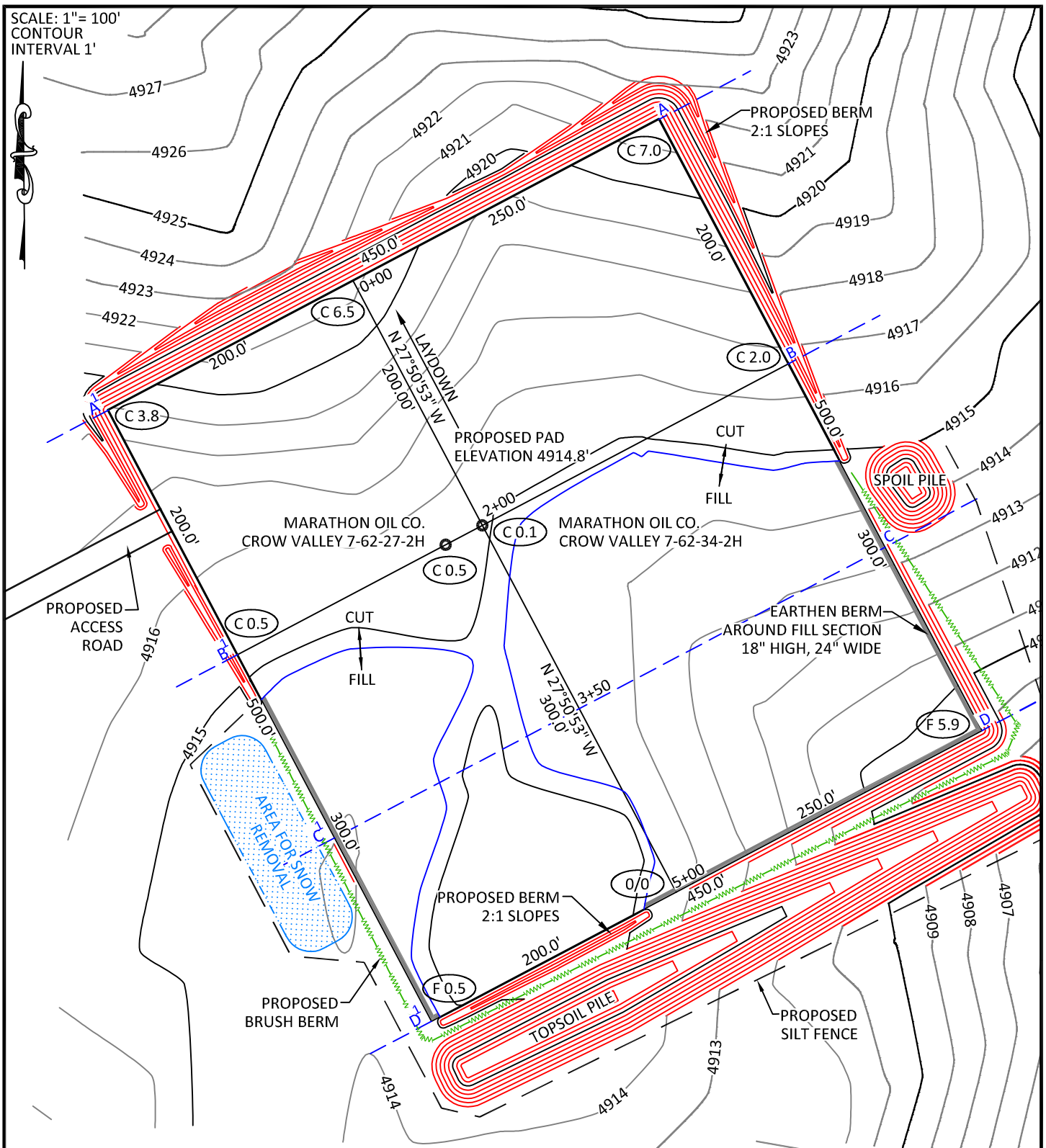
DATE: 1/3/12

EXHIBIT "L"

SHEET 11 OF 15



SCALE: 1"= 100'  
CONTOUR  
INTERVAL 1'



**CONFIDENTIALITY NOTES:**

The information contained in this plat is legally privileged and confidential information intended only for the use of the recipients. If you are not the intended recipients, you are hereby notified that any use, dissemination, distribution or copying of this information is strictly prohibited.



**WILLIAM H. SMITH  
& ASSOCIATES P.C.**

**SURVEYING CONSULTANTS**  
550 EAST SECOND NORTH PHONE: 307-875-3638  
GREEN RIVER, WY 307-875-3639  
www.whsmithpc.com

DRAWN BY: LAL

CHECKED BY: RAW

PROJECT NO: 762342H

JOB NO: 2011001

REVISIONS:

**LEGEND**

SILT FENCE



BRUSH BERM



**LOCATION:**

CROW VALLEY  
7-62-34-2H  
NE ¼ OF THE NW  
¼ OF SECTION 34,  
T 7 N, R 62 W,  
6TH PM.  
WELD COUNTY,  
COLORADO

**MARATHON OIL COMPANY**  
PO BOX 3128, HOUSTON TX, 77253  
5555 SAN FELIPE, HOUSTON TX, 77056

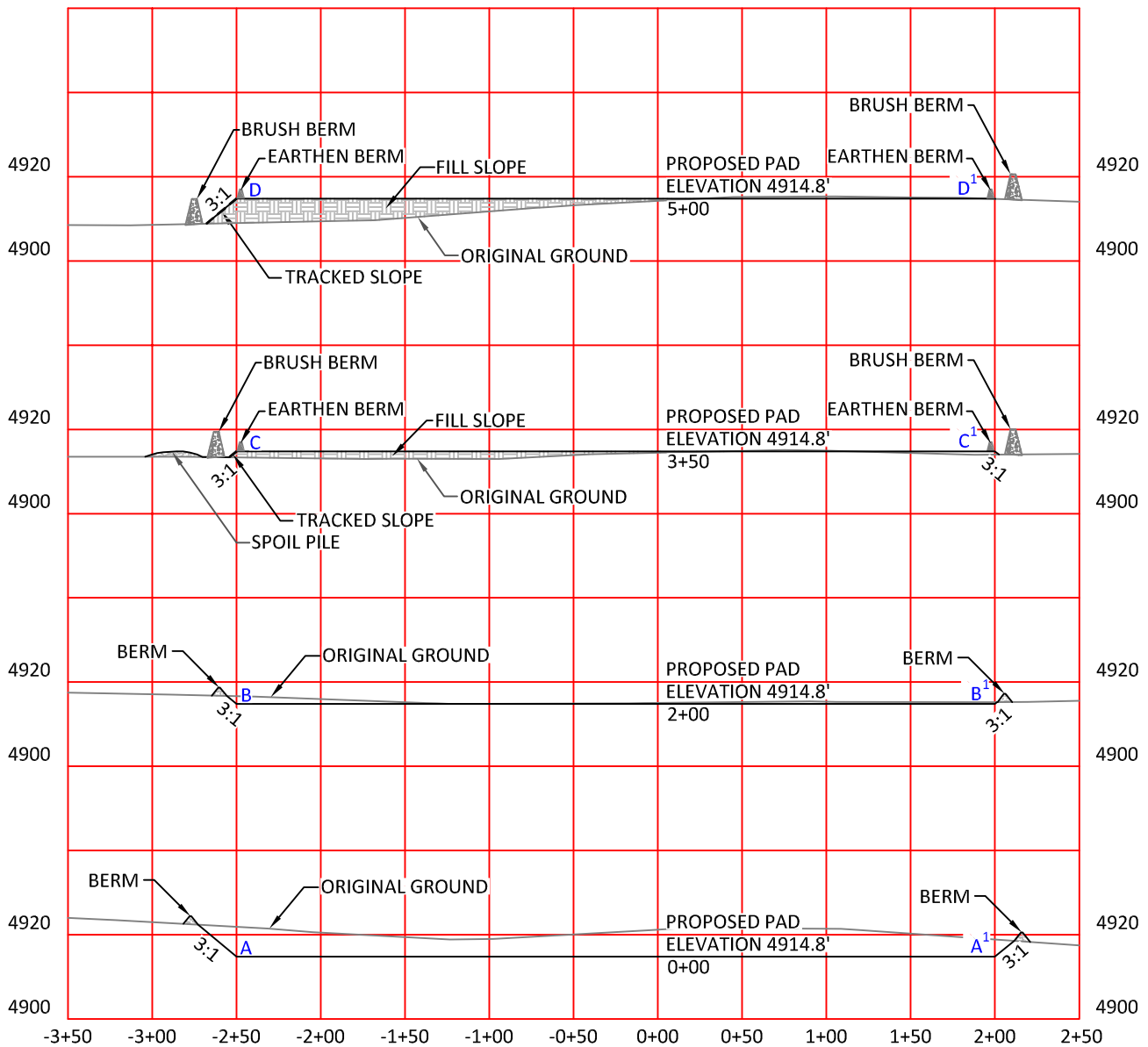
**STORM WATER  
PREVENTION PLAN**

SCALE: AS NOTED

EXHIBIT "M"

DATE: 1/3/12

SHEET 12 OF 15



HORIZONTAL SCALE: 1"=100'  
VERTICAL SCALE: 1"=40'

**CONFIDENTIALITY NOTES:**

The information contained in this plat is legally privileged and confidential information intended only for the use of the recipients. If you are not the intended recipients, you are hereby notified that any use, dissemination, distribution or copying of this information is strictly prohibited.



**WILLIAM H. SMITH  
& ASSOCIATES P.C.**  
SURVEYING CONSULTANTS

550 EAST SECOND NORTH PHONE: 307-875-3638  
GREEN RIVER, WY 307-875-3639  
www.whsmithpc.com

DRAWN BY: LAL

CHECKED BY: RAW

PROJECT NO: 762342H

JOB NO: 2011001

REVISIONS:

**LEGEND**

SILT FENCE



BRUSH BERM



**LOCATION:**

CROW VALLEY  
7-62-34-2H  
NE ¼ OF THE NW  
¼ OF SECTION 34,  
T 7 N, R 62 W,  
6TH PM.  
WELD COUNTY,  
COLORADO

**MARATHON OIL COMPANY**  
PO BOX 3128, HOUSTON TX, 77253  
5555 SAN FELIPE, HOUSTON TX, 77056

**STORM WATER PREVENTION  
CROSS SECTIONS**

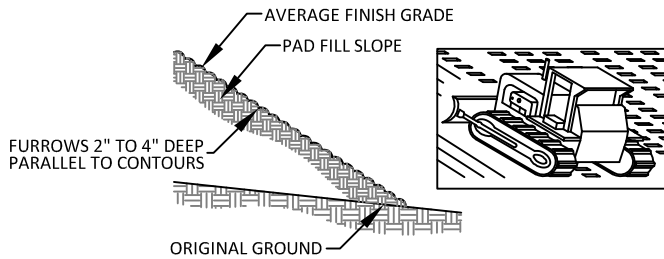
SCALE: AS NOTED

EXHIBIT "N"

DATE: 1/3/12

SHEET 13 OF 15

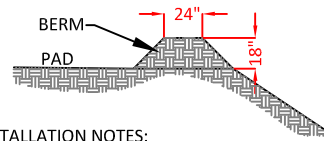
### A. FILL SLOPE TRACKING DETAILS



#### INSTALLATION NOTES:

1. DISTURBED SURFACES SHALL BE ROUGHENED USING RIPPING OR TILLING EQUIPMENT ON THE CONTOURS OR TRACKING UP AND DOWN THE SLOPE USING EQUIPMENT TREADS

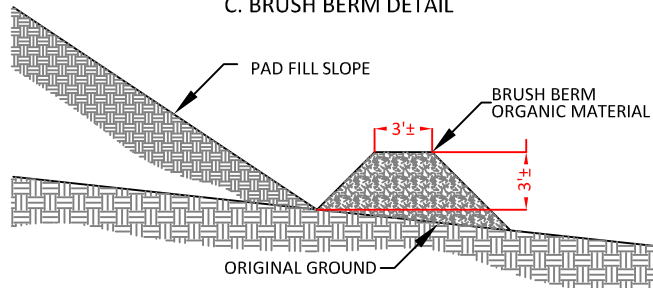
### B. EARTHEN BERM DETAIL



#### INSTALLATION NOTES:

1. BERM SHALL BE CONSTRUCTED OF WELL COMPACTED GRANULAR MATERIAL.
2. BERM SHALL BE CONSTRUCTED ON THE PERIMETER OF THE PAD IN ALL AREAS THAT COULD RECEIVE STORMWATER RUNOFF.
3. DIMENSIONS ARE APPROXIMATE. FIELD CONDITIONS WILL DETERMINE ACTUAL DIMENSIONS OF STRUCTURE.

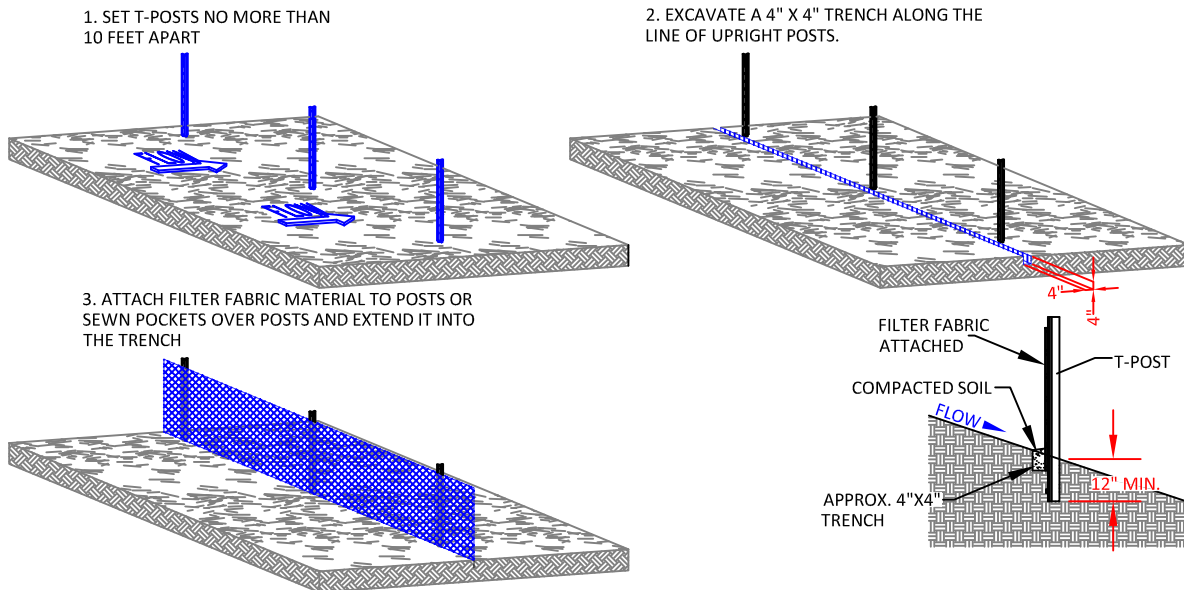
### C. BRUSH BERM DETAIL



#### INSTALLATION NOTES:

1. BERM TO BE CONSTRUCTED AFTER SITE HAS BEEN GRUBBED PRIOR TO PAD CONSTRUCTION.
2. ONSITE ORGANIC MATERIAL TO BE PUSHED INTO BERM ON EDGE PERIMETER OF FILL SLOPE IN A MANNER NOT TO CREATE ADDITIONAL DISTURBANCE BEYOND THE CATCH LINE.
3. BERM TO BE COMPACTED WITH FRONT END LOADER BUCKET OR SIMILAR METHOD TO ACHIEVE ADEQUATE COMPACTION.

### D. SILT FENCE DETAILS



#### CONFIDENTIALITY NOTES:

The information contained in this plat is legally privileged and confidential information intended only for the use of the recipients. If you are not the intended recipients, you are hereby notified that any use, dissemination, distribution or copying of this information is strictly prohibited.



**WILLIAM H. SMITH  
& ASSOCIATES P.C.**  
SURVEYING CONSULTANTS

550 EAST SECOND NORTH PHONE: 307-875-3638  
GREEN RIVER, WY 307-875-3639  
www.whsmithpc.com

DRAWN BY: LAL

CHECKED BY: RAW

PROJECT NO: 762342H

JOB NO: 2011001

REVISIONS:

#### USED ON THIS SITE

A: FILL SLOPE TRACKING

B: EARTHEN BERM AT TOP OF SLOPE  
AROUND FILL SECTIONS

C: BRUSH BERM AT TOE OF SLOPE  
AROUND FILL SECTIONS

D: SILT FENCE

#### LOCATION:

CROW VALLEY  
7-62-34-2H  
NE ¼ OF THE NW  
¼ OF SECTION 34,  
T 7 N, R 62 W,  
6TH PM.  
WELD COUNTY,  
COLORADO

**MARATHON OIL COMPANY**  
PO BOX 3128, HOUSTON TX, 77253  
5555 SAN FELIPE, HOUSTON TX, 77056

#### STORM WATER PREVENTION DETAILS

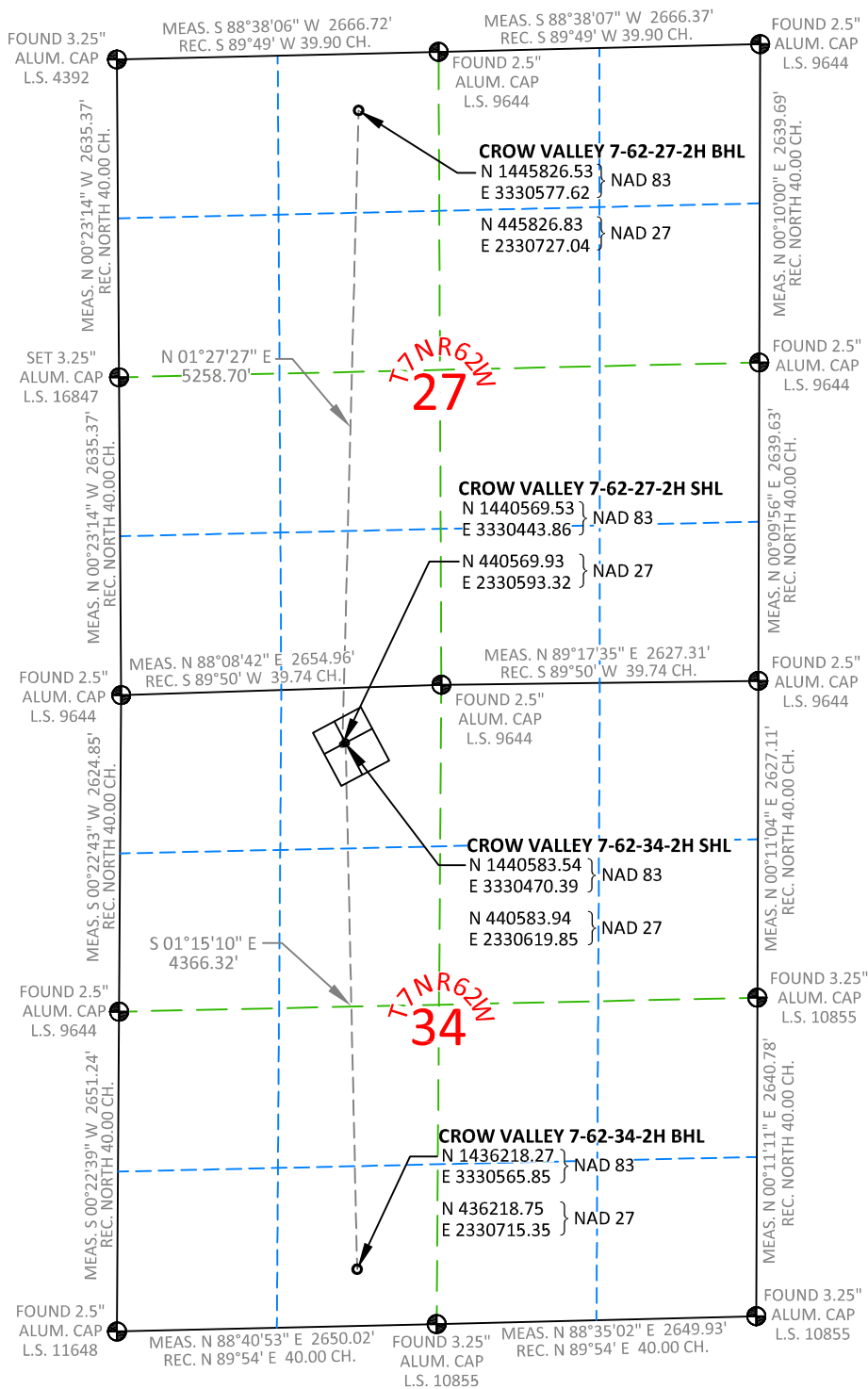
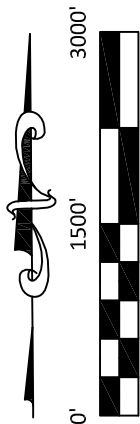
SCALE: NOT TO SCALE

EXHIBIT "O"

DATE: 1/3/12

SHEET 14 OF 15





#### NOTES:

- All bearings and distances are **GRID**, based on the Colorado State Plane Coordinate System, North Zone, North American Datum 1983 from GPS observations occupying a WHS control point (5/8" rebar) and having the Location and Elevation derived from an Opus Solution.
- Vertical Datum used is of NAVD 88.
- Record Bearings and Distances as shown are based on the General Land Office Survey plat approved on the 16th day of December 1872.



#### WILLIAM H. SMITH & ASSOCIATES P.C.

SURVEYING CONSULTANTS  
550 EAST SECOND NORTH PHONE: 307-875-3638  
GREEN RIVER, WY 307-875-3639  
www.whsmithpc.com

DRAWN BY: LAL

CHECKED BY: RAW

PROJECT NO: 762342H

JOB NO: 2011001

REVISIONS:

#### CONFIDENTIALITY NOTES:

The information contained in this plat is legally privileged and confidential information intended only for the use of the recipients. If you are not the intended recipients, you are hereby notified that any use, dissemination, distribution or copying of this information is strictly prohibited.

#### LOCATION:

CROW VALLEY  
7-62-27-2H &  
7-62-34-2H  
WITHIN THE NE1/4  
NW1/4 SECTION 34,  
T 7 N, R 62 W,  
6TH PM.  
WELD COUNTY,  
COLORADO

MARATHON OIL COMPANY  
PO BOX 3128, HOUSTON TX, 77253  
5555 SAN FELIPE, HOUSTON TX, 77056

#### MULTI WELL PAD

SCALE: 1"=1500'

DATE: 1/03/12

EXHIBIT "P"

SHEET 15 OF 15