

**WILLIAM H. SMITH
& ASSOCIATES P.C.**

SURVEYING CONSULTANTS
550 EAST SECOND NORTH PHONE: 307-875-3638
GREEN RIVER, WY 307-875-3639
www.whsmithpc.com

DRAWN BY: LAL **CHECKED BY: RAW**
PROJECT NO: 762342H **JOB NO: 2011001**
REVISIONS: 1/16/2012 REVISE ACCESS ROAD LOCATION

LEGEND

PROPOSED ACCESS ————
EXISTING 2-TRACK - - - - -
EXISTING ROAD ————
1/16 LINE ————
1/4 LINE ————
SECTION LINE ————

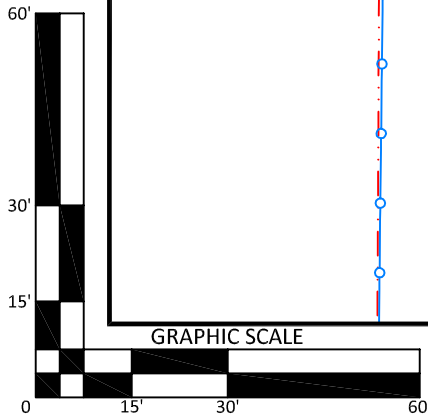
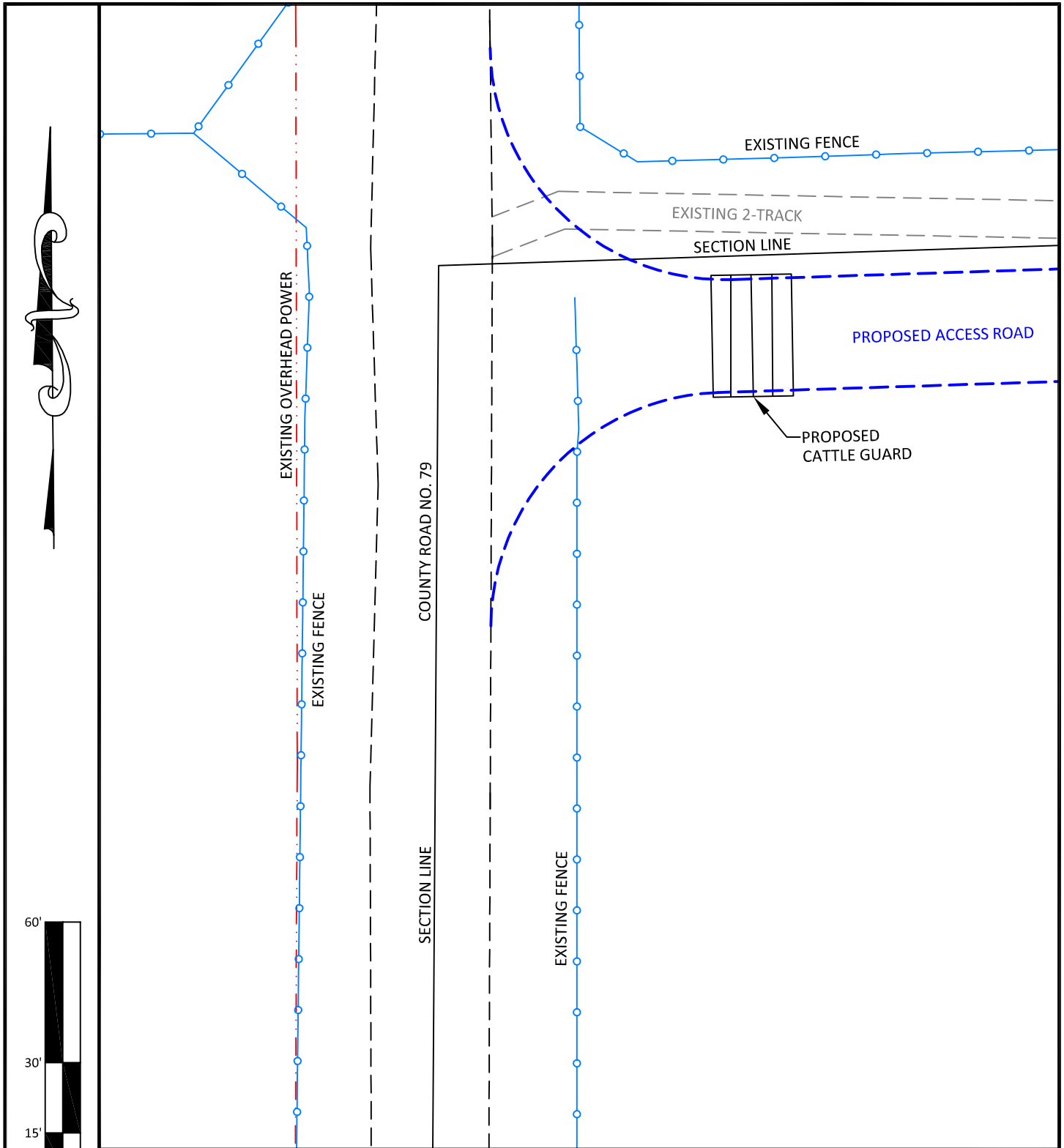
LOCATION:

CROW VALLEY
7-62-34-2H &
7-62-27-2H
WITHIN THE NE ¼ NW ¼
SECTION 34
T 7 N, R 62 W,
6TH PM.
WELD COUNTY,
COLORADO

MARATHON OIL COMPANY
PO BOX 3128, HOUSTON TX, 77253
5555 SAN FELIPE, HOUSTON TX, 77056

ACCESS ROAD MAP

SCALE: 1"=1000' **EXHIBIT "E"**
01/10/2012 **SHEET 4 OF 15**



CONFIDENTIALITY NOTES:

The information contained in this plat is legally privileged and confidential information intended only for the use of the recipients. If you are not the intended recipients, you are hereby notified that any use, dissemination, distribution or copying of this information is strictly prohibited.







**WILLIAM H. SMITH
& ASSOCIATES P.C.**

SURVEYING CONSULTANTS
550 EAST SECOND NORTH PHONE: 307-875-3638
GREEN RIVER, WY 307-875-3639
www.whsmithpc.com

DRAWN BY: LAL CHECKED BY: RAW
PROJECT NO: 762342H JOB NO: 2011001
REVISIONS: 1/16/2012 REVISE ACCESS ROAD LOCATION

LEGEND

ACCESS ROAD 
EXISTING ROAD 
EXISTING 2-TRACK 
EXISTING OVHP 

LOCATION:

CROW VALLEY
7-62-34-2H &
7-62-27-2H
WITHIN THE NE ¼ NW ¼
SECTION 34
T 7 N, R 62 W,
6TH PM.
WELD COUNTY,
COLORADO

MARATHON OIL COMPANY
PO BOX 3128, HOUSTON TX, 77253
5555 SAN FELIPE, HOUSTON TX, 77056

ACCESS ROAD ENTRANCE

SCALE: 1"=30' EXHIBIT "A"
01/10/2012 SHEET 1 OF 1