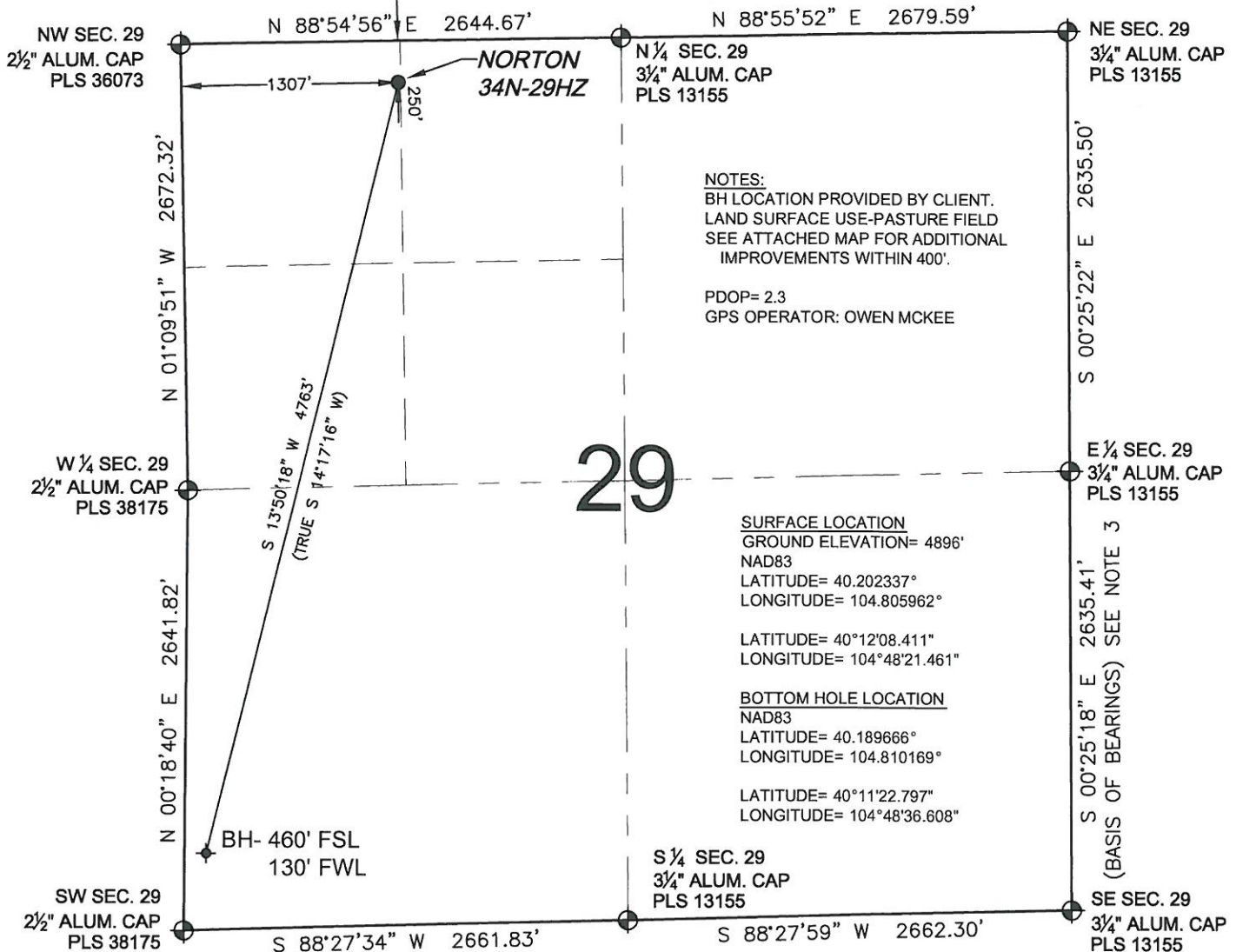


# WELL LOCATION CERTIFICATE: NORTON 34N-29HZ

SECTION 29, TOWNSHIP 3 NORTH, RANGE 66 WEST, 6TH P.M.



NOTES:  
BH LOCATION PROVIDED BY CLIENT.  
LAND SURFACE USE-PASTURE FIELD  
SEE ATTACHED MAP FOR ADDITIONAL  
IMPROVEMENTS WITHIN 400'.

PDOP= 2.3  
GPS OPERATOR: OWEN MCKEE

SURFACE LOCATION  
GROUND ELEVATION= 4896'  
NAD83  
LATITUDE= 40.202337°  
LONGITUDE= 104.805962°

LATITUDE= 40°12'08.411"  
LONGITUDE= 104°48'21.461"

BOTTOM HOLE LOCATION  
NAD83  
LATITUDE= 40.189666°  
LONGITUDE= 104.810169°

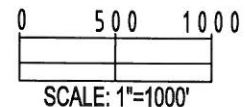
LATITUDE= 40°11'22.797"  
LONGITUDE= 104°48'36.608"

S 1/4 SEC. 29  
3 1/4" ALUM. CAP  
PLS 13155

WELL NORTON 34N-29HZ TO BE LOCATED 250' FNL AND 1307' FWL

## LEGEND

⊕ = EXISTING MONUMENT    ♦ = BOTTOM HOLE    BH = BOTTOM HOLE  
● = PROPOSED WELL    ◆ = EXISTING WELL



## NOTES:

1. THIS FIELD SURVEY CONFORMS TO THE MINIMUM STANDARDS SET BY THE C.O.G.C.C., RULE NO. 215
2. HORIZONTAL POSITIONS AND ORTHOMETRIC ELEVATIONS SHOWN AT THE WELL HEAD, ARE BASED ON GPS-RTK POSITIONS DERIVED FROM MINIMUM 2-HOUR STATIC OBSERVATIONS CORRECTED BY THE NATIONAL GEODETIC SURVEY ONLINE POSITIONING USER SERVICE, O.P.U.S. DATUM: HORIZONTAL = NAD83/2007, VERTICAL = NAVD88
3. THE BASIS OF BEARINGS ARE STATE PLANE COORDINATE SYSTEM GRID BEARINGS SHOWN HEREON BETWEEN THE DESCRIBED THE MONUMENTS SHOWN HEREON.
4. GRID DISTANCES ARE SHOWN, AS MEASURED IN THE FIELD, WITH TIES TO WELLS MEASURED PERPENDICULAR TO SECTION LINES.

I, L. KELLEY STEVENSON, A LICENSED PROFESSIONAL LAND SURVEYOR IN THE STATE OF COLORADO DO HEREBY CERTIFY TO KERR-MCGEE OIL & GAS ONSHORE LP, THAT THE SURVEY AND WELL LOCATION CERTIFICATE SHOWN HEREON WERE DONE BY ME OR UNDER MY DIRECT SUPERVISION AND THAT THE DRAWING SHOWN HEREON ACCURATELY DEPICTS THE PROPOSED LOCATION OF THE WELL. THIS CERTIFICATE DOES NOT REPRESENT A LAND SURVEY PLAT OR IMPROVEMENT SURVEY PLAT AS DEFINED BY C.R.S. 38-51-102 AND CANNOT BE RELIED UPON TO DETERMINE OWNERSHIP.

L. KELLEY STEVENSON, PLS 38231  
COLORADO LICENSED PROFESSIONAL LAND SURVEYOR  
FOR AND ON BEHALF OF P.F.S., LLC

PREPARED BY:



FIELD DATE:  
10-14-11

DRAWING DATE:  
11-10-11

BY:  
SMF

SURFACE LOCATION:

NW 1/4 NW 1/4,  
SEC. 29, T3N, R66W, 6TH P.M.  
WELD COUNTY, COLORADO

NOTICE: ACCORDING TO COLORADO LAW YOU MUST COMMENCE ANY LEGAL ACTION BASED UPON ANY DEFECT IN THIS SURVEY WITHIN THREE YEARS AFTER YOU FIRST DISCOVER SUCH DEFECT. IN NO EVENT MAY ANY ACTION BASED UPON ANY DEFECT IN THIS SURVEY BE COMMENCED MORE THAN TEN YEARS FROM THIS SAID DATE OF THIS CERTIFICATION SHOWN HEREON.

