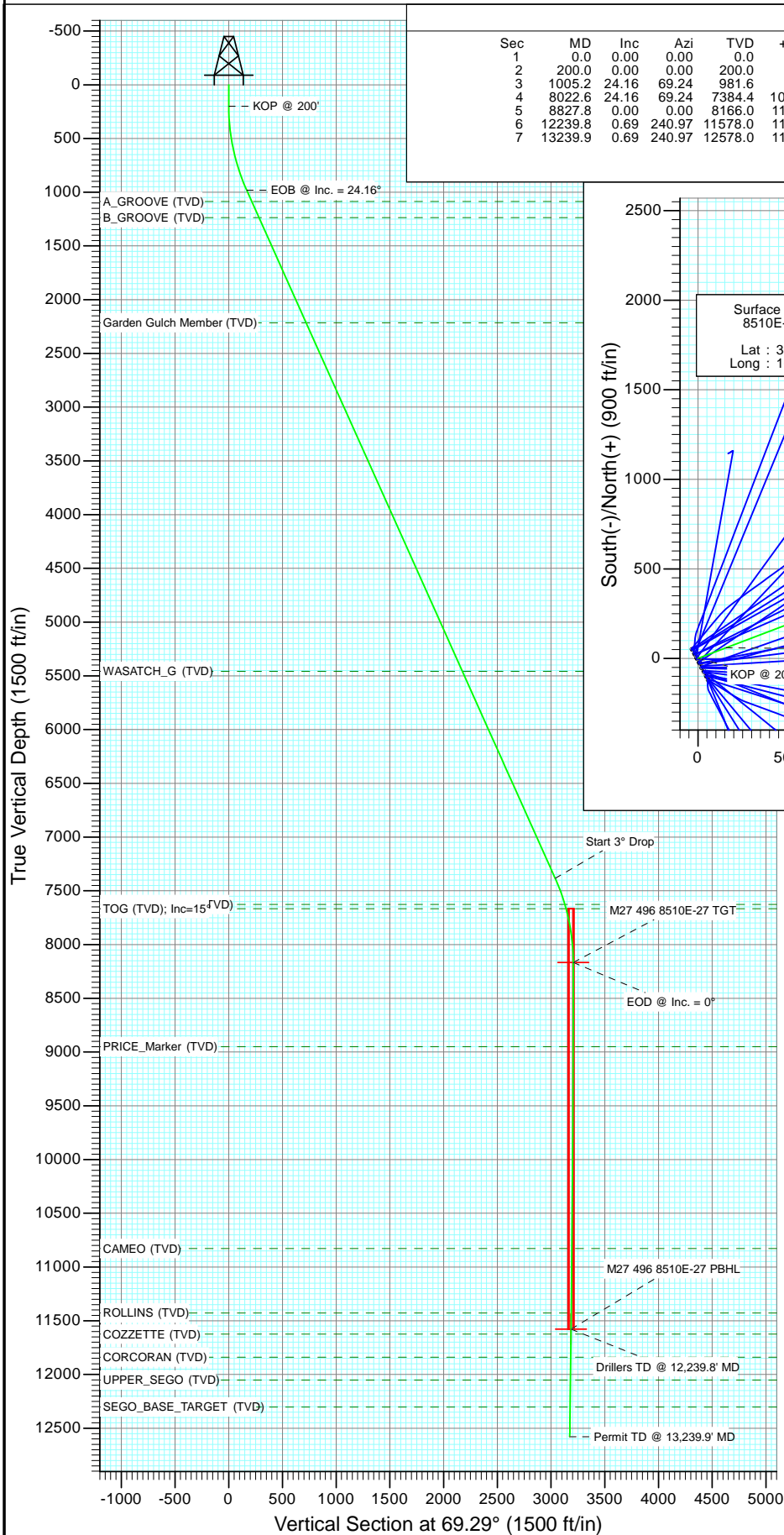


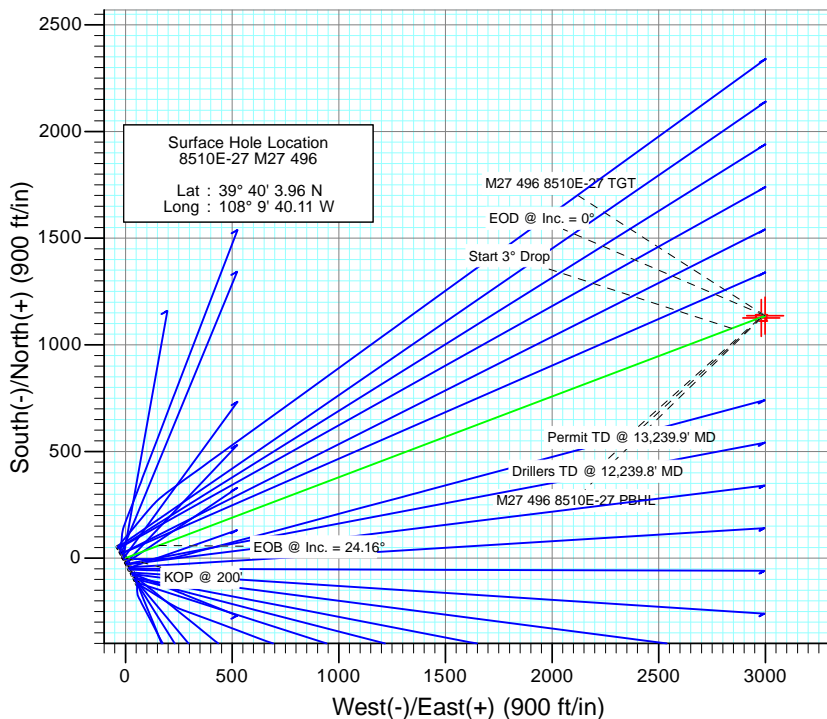


Project: Story Gulch  
Site: S27-T4S-R96W (M27 496)  
Well: 8510E-27 M27 496  
Wellbore: DD  
Design: Plan #2



#### SECTION DETAILS

Sec	MD	Inc	Azi	TVD	+N/-S	+E/-W	Dleg	TFace	VSect	Target
1	0.0	0.00	0.00	0.0	0.0	0.0	0.00	0.00	0.0	
2	200.0	0.00	0.00	200.0	0.0	0.0	0.00	0.00	0.0	
3	1005.2	24.16	69.24	981.6	59.3	156.4	3.00	69.24	167.2	
4	8022.6	24.16	69.24	7384.4	1077.1	2841.6	0.00	0.00	3038.9	
5	8827.8	0.00	0.00	8166.0	1136.3	2998.0	3.00	180.00	3206.1	M27 496 8510E-27 TGT
6	12239.8	0.69	240.97	11578.0	1126.4	2980.0	0.02	240.97	3185.7	M27 496 8510E-27 PBHL
7	13239.9	0.69	240.97	12578.0	1120.5	2969.4	0.00	0.00	3173.8	



#### FORMATION TOP DETAILS

TVDPath	MDPath	Formation
1086.0	1119.7	A_GROOVE (TVD)
1237.0	1285.2	B_GROOVE (TVD)
2214.0	2355.9	Garden Gulch Member (TVD)
5458.0	5911.2	WASATCH_G (TVD)
7626.0	8280.3	WILLIAMS_FORK (TVD)
7666.0	8321.9	TOG (TVD); Inc=15°
8949.0	9610.8	PRICE_Marker (TVD)
10828.0	11489.8	CAMEO (TVD)
11428.0	12089.8	ROLLINS (TVD)
11624.0	12285.8	COZZETTE (TVD)
11839.0	12500.9	CORCORAN (TVD)
12052.0	12713.9	UPPER_SEGO (TVD)
12302.0	12963.9	SEGO_BASE_TARGET (TVD)



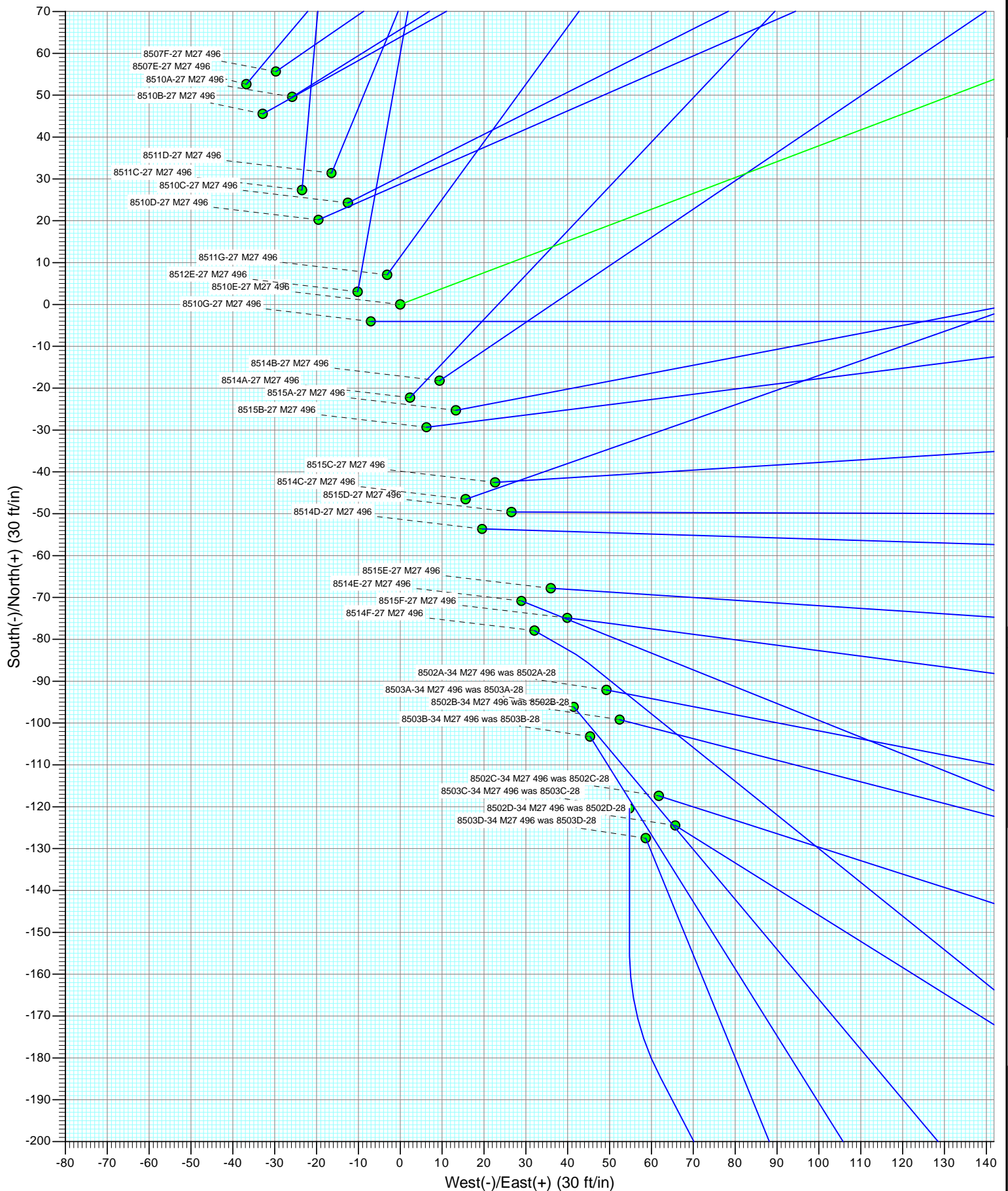
Azimuths to True North  
Magnetic North: 10.41°

Magnetic Field  
Strength: 52277.7nT  
Dip Angle: 65.84°  
Date: 9/21/2011  
Model: IGRF2010

Plan #2 8510E-27 M27 496 11500' LR KBE @ 8121.0ft (Original Well Elev) GL @ 8099.0 North American Datum 1983 Well 8510E-27 M27 496, True North							
Type	Target	Azimuth	Origin Type	N/S	E/W	From TVD	
	M27 496 8510E-27 PBHL	69.29	Slot	0.0	0.0	0.0	
Name	TVD	+N/-S	+E/-W	Latitude	Longitude		
M27 496 8510E-27 TGT	8166.0	1136.3	2998.0	39° 40' 15.19 N	108° 9' 1.77 W		
M27 496 8510E-27 PBHL	11578.0	1126.4	2980.0	39° 40' 15.09 N	108° 9' 2.00 W		

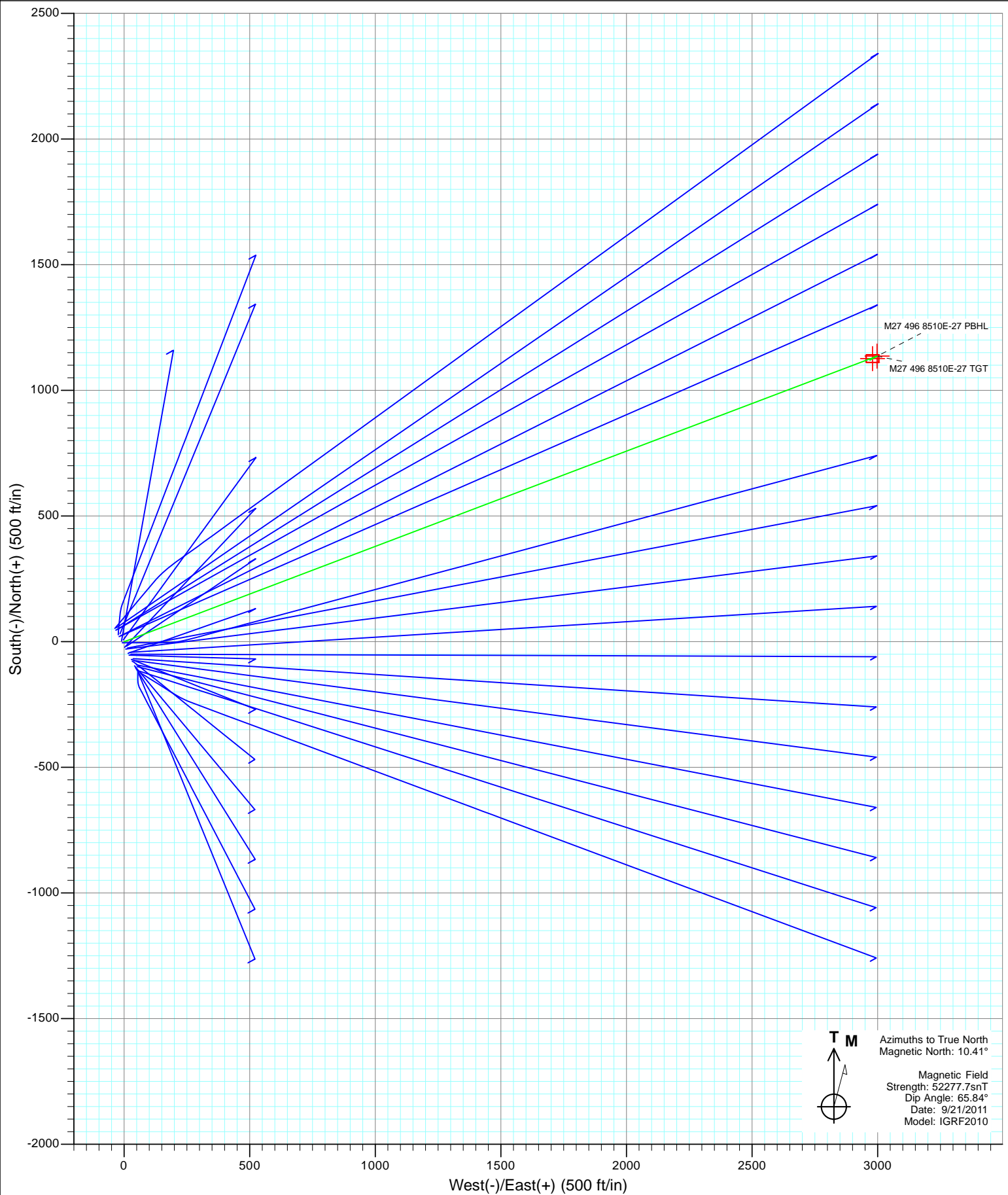


Project: Story Gulch  
Site: S27-T4S-R96W (M27 496)  
Well: 8510E-27 M27 496  
Wellbore: DD  
Design: Plan #2



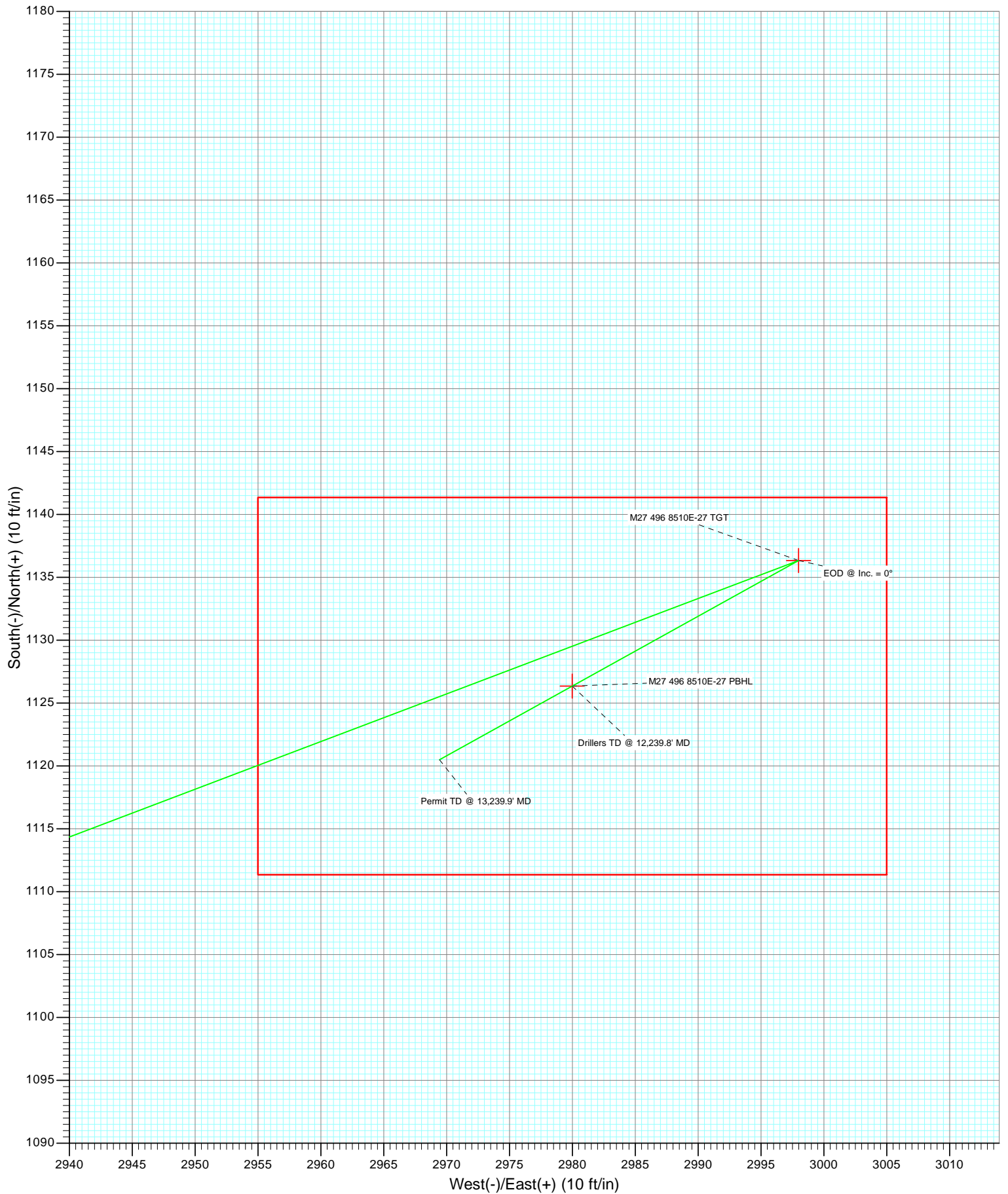


Project: Story Gulch  
Site: S27-T4S-R96W (M27 496)  
Well: 8510E-27 M27 496  
Wellbore: DD  
Design: Plan #2





Project: Story Gulch  
Site: S27-T4S-R96W (M27 496)  
Well: 8510E-27 M27 496  
Wellbore: DD  
Design: Plan #2



# Cathedral Energy Services

## Planning Report

<b>Database:</b>	USA EDM 5000 Multi Users DB	<b>Local Co-ordinate Reference:</b>	Well 8510E-27 M27 496
<b>Company:</b>	EnCana Oil & Gas (USA) Inc	<b>TVD Reference:</b>	KBE @ 8121.0ft (Original Well Elev)
<b>Project:</b>	Story Gulch	<b>MD Reference:</b>	KBE @ 8121.0ft (Original Well Elev)
<b>Site:</b>	S27-T4S-R96W (M27 496)	<b>North Reference:</b>	True
<b>Well:</b>	8510E-27 M27 496	<b>Survey Calculation Method:</b>	Minimum Curvature
<b>Wellbore:</b>	DD		
<b>Design:</b>	Plan #2		

<b>Project</b>	Story Gulch		
<b>Map System:</b>	US State Plane 1983	<b>System Datum:</b>	Mean Sea Level
<b>Geo Datum:</b>	North American Datum 1983		
<b>Map Zone:</b>	Colorado Central Zone		

Site		S27-T4S-R96W (M27 496)			
Site Position:		Northing:	1,678,990.24 ft	Latitude:	39° 40' 3.01 N
From:	Lat/Long	Easting:	2,251,008.33 ft	Longitude:	108° 9' 39.57 W
Position Uncertainty:	0.0 ft	Slot Radius:	13.200 in	Grid Convergence:	-1.68 °

Well	8510E-27 M27 496					
Well Position	+N/-S	0.0 ft	Northing:	1,679,087.56 ft	Latitude:	39° 40' 3.96 N
	+E/-W	0.0 ft	Easting:	2,250,968.93 ft	Longitude:	108° 9' 40.11 W
Position Uncertainty		0.0 ft	Wellhead Elevation:	ft	Ground Level:	8,099.0 ft

<b>Wellbore</b>	DD				
<b>Magnetics</b>	<b>Model Name</b>	<b>Sample Date</b>	<b>Declination (°)</b>	<b>Dip Angle (°)</b>	<b>Field Strength (nT)</b>
	IGRF2010	9/21/2011	10.41	65.84	52,278

<b>Design</b>	Plan #2				
<b>Audit Notes:</b>					
<b>Version:</b>	<b>Phase:</b>	PLAN	<b>Tie On Depth:</b>	0.0	
<b>Vertical Section:</b>	<b>Depth From (TVD) (ft)</b>	<b>+N/-S (ft)</b>	<b>+E/-W (ft)</b>	<b>Direction (°)</b>	
	0.0	0.0	0.0	69.29	

<b>Plan Sections</b>										
Measured Depth (ft)	Inclination (°)	Azimuth (°)	Vertical Depth (ft)	+N/-S (ft)	+E/-W (ft)	Dogleg Rate (°/100ft)	Build Rate (°/100ft)	Turn Rate (°/100ft)	TFO (°)	Target
0.0	0.00	0.00	0.0	0.0	0.0	0.00	0.00	0.00	0.00	
200.0	0.00	0.00	200.0	0.0	0.0	0.00	0.00	0.00	0.00	
1,005.2	24.16	69.24	981.6	59.3	156.4	3.00	3.00	0.00	69.24	
8,022.6	24.16	69.24	7,384.4	1,077.1	2,841.6	0.00	0.00	0.00	0.00	
8,827.8	0.00	0.00	8,166.0	1,136.3	2,998.0	3.00	-3.00	0.00	180.00	M27 496 8510E-27 T1
12,239.8	0.69	240.97	11,578.0	1,126.4	2,980.0	0.02	0.02	-3.49	240.97	M27 496 8510E-27 PI
13,239.9	0.69	240.97	12,578.0	1,120.5	2,969.4	0.00	0.00	0.00	0.00	

# Cathedral Energy Services

## Planning Report

<b>Database:</b>	USA EDM 5000 Multi Users DB	<b>Local Co-ordinate Reference:</b>	Well 8510E-27 M27 496
<b>Company:</b>	EnCana Oil & Gas (USA) Inc	<b>TVD Reference:</b>	KBE @ 8121.0ft (Original Well Elev)
<b>Project:</b>	Story Gulch	<b>MD Reference:</b>	KBE @ 8121.0ft (Original Well Elev)
<b>Site:</b>	S27-T4S-R96W (M27 496)	<b>North Reference:</b>	True
<b>Well:</b>	8510E-27 M27 496	<b>Survey Calculation Method:</b>	Minimum Curvature
<b>Wellbore:</b>	DD		
<b>Design:</b>	Plan #2		

### Planned Survey

Measured Depth (ft)	Inclination (°)	Azimuth (°)	Vertical Depth (ft)	+N/-S (ft)	+E/-W (ft)	Vertical Section (ft)	Dogleg Rate (°/100ft)	Build Rate (°/100ft)	Comments / Formations
0.0	0.00	0.00	0.0	0.0	0.0	0.0	0.00	0.00	
100.0	0.00	0.00	100.0	0.0	0.0	0.0	0.00	0.00	
200.0	0.00	0.00	200.0	0.0	0.0	0.0	0.00	0.00	KOP @ 200'
300.0	3.00	69.24	300.0	0.9	2.4	2.6	3.00	3.00	
400.0	6.00	69.24	399.6	3.7	9.8	10.5	3.00	3.00	
500.0	9.00	69.24	498.8	8.3	22.0	23.5	3.00	3.00	
600.0	12.00	69.24	597.1	14.8	39.0	41.7	3.00	3.00	
700.0	15.00	69.24	694.3	23.1	60.9	65.1	3.00	3.00	
800.0	18.00	69.24	790.2	33.1	87.4	93.5	3.00	3.00	
900.0	21.00	69.24	884.4	45.0	118.6	126.9	3.00	3.00	
1,005.2	24.16	69.24	981.6	59.3	156.4	167.2	3.00	3.00	EOB @ Inc. = 24.16°
1,100.0	24.16	69.24	1,068.1	73.0	192.7	206.0	0.00	0.00	
1,119.7	24.16	69.24	1,086.0	75.9	200.2	214.1	0.00	0.00	A_GROOVE (TVD)
1,200.0	24.16	69.24	1,159.3	87.5	230.9	247.0	0.00	0.00	
1,285.2	24.16	69.24	1,237.0	99.9	263.5	281.8	0.00	0.00	B_GROOVE (TVD)
1,300.0	24.16	69.24	1,250.5	102.0	269.2	287.9	0.00	0.00	
1,400.0	24.16	69.24	1,341.8	116.5	307.5	328.8	0.00	0.00	
1,500.0	24.16	69.24	1,433.0	131.0	345.7	369.7	0.00	0.00	
1,600.0	24.16	69.24	1,524.3	145.5	384.0	410.6	0.00	0.00	
1,700.0	24.16	69.24	1,615.5	160.0	422.2	451.6	0.00	0.00	
1,800.0	24.16	69.24	1,706.8	174.6	460.5	492.5	0.00	0.00	
1,900.0	24.16	69.24	1,798.0	189.1	498.8	533.4	0.00	0.00	
2,000.0	24.16	69.24	1,889.2	203.6	537.0	574.3	0.00	0.00	
2,100.0	24.16	69.24	1,980.5	218.1	575.3	615.3	0.00	0.00	
2,200.0	24.16	69.24	2,071.7	232.6	613.6	656.2	0.00	0.00	
2,300.0	24.16	69.24	2,163.0	247.1	651.8	697.1	0.00	0.00	
2,355.9	24.16	69.24	2,214.0	255.2	673.2	720.0	0.00	0.00	Garden Gulch Member (TVD)
2,400.0	24.16	69.24	2,254.2	261.6	690.1	738.0	0.00	0.00	
2,500.0	24.16	69.24	2,345.5	276.1	728.4	778.9	0.00	0.00	
2,600.0	24.16	69.24	2,436.7	290.6	766.6	819.9	0.00	0.00	
2,700.0	24.16	69.24	2,528.0	305.1	804.9	860.8	0.00	0.00	
2,800.0	24.16	69.24	2,619.2	319.6	843.2	901.7	0.00	0.00	
2,900.0	24.16	69.24	2,710.4	334.1	881.4	942.6	0.00	0.00	
3,000.0	24.16	69.24	2,801.7	348.6	919.7	983.5	0.00	0.00	
3,100.0	24.16	69.24	2,892.9	363.1	958.0	1,024.5	0.00	0.00	
3,200.0	24.16	69.24	2,984.2	377.6	996.2	1,065.4	0.00	0.00	
3,300.0	24.16	69.24	3,075.4	392.1	1,034.5	1,106.3	0.00	0.00	
3,400.0	24.16	69.24	3,166.7	406.6	1,072.8	1,147.2	0.00	0.00	
3,500.0	24.16	69.24	3,257.9	421.1	1,111.0	1,188.2	0.00	0.00	
3,600.0	24.16	69.24	3,349.1	435.6	1,149.3	1,229.1	0.00	0.00	
3,700.0	24.16	69.24	3,440.4	450.1	1,187.6	1,270.0	0.00	0.00	
3,800.0	24.16	69.24	3,531.6	464.6	1,225.8	1,310.9	0.00	0.00	
3,900.0	24.16	69.24	3,622.9	479.1	1,264.1	1,351.8	0.00	0.00	
4,000.0	24.16	69.24	3,714.1	493.6	1,302.4	1,392.8	0.00	0.00	
4,100.0	24.16	69.24	3,805.4	508.1	1,340.6	1,433.7	0.00	0.00	
4,200.0	24.16	69.24	3,896.6	522.6	1,378.9	1,474.6	0.00	0.00	
4,300.0	24.16	69.24	3,987.9	537.1	1,417.2	1,515.5	0.00	0.00	
4,400.0	24.16	69.24	4,079.1	551.7	1,455.4	1,556.5	0.00	0.00	
4,500.0	24.16	69.24	4,170.3	566.2	1,493.7	1,597.4	0.00	0.00	
4,600.0	24.16	69.24	4,261.6	580.7	1,531.9	1,638.3	0.00	0.00	
4,700.0	24.16	69.24	4,352.8	595.2	1,570.2	1,679.2	0.00	0.00	
4,800.0	24.16	69.24	4,444.1	609.7	1,608.5	1,720.1	0.00	0.00	

# Cathedral Energy Services

## Planning Report

<b>Database:</b>	USA EDM 5000 Multi Users DB	<b>Local Co-ordinate Reference:</b>	Well 8510E-27 M27 496
<b>Company:</b>	EnCana Oil & Gas (USA) Inc	<b>TVD Reference:</b>	KBE @ 8121.0ft (Original Well Elev)
<b>Project:</b>	Story Gulch	<b>MD Reference:</b>	KBE @ 8121.0ft (Original Well Elev)
<b>Site:</b>	S27-T4S-R96W (M27 496)	<b>North Reference:</b>	True
<b>Well:</b>	8510E-27 M27 496	<b>Survey Calculation Method:</b>	Minimum Curvature
<b>Wellbore:</b>	DD		
<b>Design:</b>	Plan #2		

Planned Survey									
Measured Depth (ft)	Inclination (°)	Azimuth (°)	Vertical Depth (ft)	+N/-S (ft)	+E/-W (ft)	Vertical Section (ft)	Dogleg Rate (°/100ft)	Build Rate (°/100ft)	Comments / Formations
4,900.0	24.16	69.24	4,535.3	624.2	1,646.7	1,761.1	0.00	0.00	
5,000.0	24.16	69.24	4,626.6	638.7	1,685.0	1,802.0	0.00	0.00	
5,100.0	24.16	69.24	4,717.8	653.2	1,723.3	1,842.9	0.00	0.00	
5,200.0	24.16	69.24	4,809.0	667.7	1,761.5	1,883.8	0.00	0.00	
5,300.0	24.16	69.24	4,900.3	682.2	1,799.8	1,924.8	0.00	0.00	
5,400.0	24.16	69.24	4,991.5	696.7	1,838.1	1,965.7	0.00	0.00	
5,500.0	24.16	69.24	5,082.8	711.2	1,876.3	2,006.6	0.00	0.00	
5,600.0	24.16	69.24	5,174.0	725.7	1,914.6	2,047.5	0.00	0.00	
5,700.0	24.16	69.24	5,265.3	740.2	1,952.9	2,088.4	0.00	0.00	
5,800.0	24.16	69.24	5,356.5	754.7	1,991.1	2,129.4	0.00	0.00	
5,900.0	24.16	69.24	5,447.7	769.2	2,029.4	2,170.3	0.00	0.00	
5,911.2	24.16	69.24	5,458.0	770.8	2,033.7	2,174.9	0.00	0.00	WASATCH_G (TVD)
6,000.0	24.16	69.24	5,539.0	783.7	2,067.7	2,211.2	0.00	0.00	
6,100.0	24.16	69.24	5,630.2	798.2	2,105.9	2,252.1	0.00	0.00	
6,200.0	24.16	69.24	5,721.5	812.7	2,144.2	2,293.1	0.00	0.00	
6,300.0	24.16	69.24	5,812.7	827.2	2,182.5	2,334.0	0.00	0.00	
6,400.0	24.16	69.24	5,904.0	841.7	2,220.7	2,374.9	0.00	0.00	
6,500.0	24.16	69.24	5,995.2	856.2	2,259.0	2,415.8	0.00	0.00	
6,600.0	24.16	69.24	6,086.5	870.7	2,297.3	2,456.7	0.00	0.00	
6,700.0	24.16	69.24	6,177.7	885.2	2,335.5	2,497.7	0.00	0.00	
6,800.0	24.16	69.24	6,268.9	899.7	2,373.8	2,538.6	0.00	0.00	
6,900.0	24.16	69.24	6,360.2	914.3	2,412.1	2,579.5	0.00	0.00	
7,000.0	24.16	69.24	6,451.4	928.8	2,450.3	2,620.4	0.00	0.00	
7,100.0	24.16	69.24	6,542.7	943.3	2,488.6	2,661.4	0.00	0.00	
7,200.0	24.16	69.24	6,633.9	957.8	2,526.9	2,702.3	0.00	0.00	
7,300.0	24.16	69.24	6,725.2	972.3	2,565.1	2,743.2	0.00	0.00	
7,400.0	24.16	69.24	6,816.4	986.8	2,603.4	2,784.1	0.00	0.00	
7,500.0	24.16	69.24	6,907.6	1,001.3	2,641.6	2,825.0	0.00	0.00	
7,600.0	24.16	69.24	6,998.9	1,015.8	2,679.9	2,866.0	0.00	0.00	
7,700.0	24.16	69.24	7,090.1	1,030.3	2,718.2	2,906.9	0.00	0.00	
7,800.0	24.16	69.24	7,181.4	1,044.8	2,756.4	2,947.8	0.00	0.00	
7,900.0	24.16	69.24	7,272.6	1,059.3	2,794.7	2,988.7	0.00	0.00	
8,000.0	24.16	69.24	7,363.9	1,073.8	2,833.0	3,029.7	0.00	0.00	
8,022.6	24.16	69.24	7,384.4	1,077.1	2,841.6	3,038.9	0.00	0.00	Start 3° Drop
8,100.0	21.83	69.24	7,455.7	1,087.8	2,869.9	3,069.1	3.00	-3.00	
8,200.0	18.83	69.24	7,549.5	1,100.1	2,902.4	3,103.9	3.00	-3.00	
8,280.3	16.42	69.24	7,626.0	1,108.7	2,925.1	3,128.2	3.00	-3.00	WILLIAMS_FORK (TVD)
8,300.0	15.83	69.24	7,644.9	1,110.7	2,930.2	3,133.7	3.00	-3.00	
8,321.9	15.18	69.24	7,666.0	1,112.7	2,935.7	3,139.5	3.00	-3.00	TOG (TVD); Inc=15°
8,400.0	12.83	69.24	7,741.8	1,119.4	2,953.4	3,158.4	3.00	-3.00	
8,500.0	9.83	69.24	7,839.9	1,126.4	2,971.8	3,178.1	3.00	-3.00	
8,600.0	6.83	69.24	7,938.8	1,131.5	2,985.3	3,192.6	3.00	-3.00	
8,700.0	3.83	69.24	8,038.3	1,134.8	2,994.0	3,201.8	3.00	-3.00	
8,800.0	0.83	69.24	8,138.2	1,136.3	2,997.8	3,205.9	3.00	-3.00	
8,827.8	0.00	0.00	8,166.0	1,136.3	2,998.0	3,206.1	3.00	-3.00	EOD @ Inc. = 0°
8,900.0	0.01	240.97	8,238.2	1,136.3	2,998.0	3,206.1	0.02	0.02	
9,000.0	0.03	240.97	8,338.2	1,136.3	2,997.9	3,206.1	0.02	0.02	
9,100.0	0.06	240.97	8,438.2	1,136.3	2,997.9	3,206.0	0.02	0.02	
9,200.0	0.08	240.97	8,538.2	1,136.2	2,997.8	3,205.9	0.02	0.02	
9,300.0	0.10	240.97	8,638.2	1,136.1	2,997.6	3,205.7	0.02	0.02	
9,400.0	0.12	240.97	8,738.2	1,136.1	2,997.5	3,205.5	0.02	0.02	
9,500.0	0.14	240.97	8,838.2	1,136.0	2,997.3	3,205.3	0.02	0.02	



# Cathedral Energy Services

## Planning Report

<b>Database:</b>	USA EDM 5000 Multi Users DB	<b>Local Co-ordinate Reference:</b>	Well 8510E-27 M27 496
<b>Company:</b>	EnCana Oil & Gas (USA) Inc	<b>TVD Reference:</b>	KBE @ 8121.0ft (Original Well Elev)
<b>Project:</b>	Story Gulch	<b>MD Reference:</b>	KBE @ 8121.0ft (Original Well Elev)
<b>Site:</b>	S27-T4S-R96W (M27 496)	<b>North Reference:</b>	True
<b>Well:</b>	8510E-27 M27 496	<b>Survey Calculation Method:</b>	Minimum Curvature
<b>Wellbore:</b>	DD		
<b>Design:</b>	Plan #2		

### Planned Survey

Measured Depth (ft)	Inclination (°)	Azimuth (°)	Vertical Depth (ft)	+N/-S (ft)	+E/-W (ft)	Vertical Section (ft)	Dogleg Rate (°/100ft)	Build Rate (°/100ft)	Comments / Formations
9,600.0	0.16	240.97	8,938.2	1,135.8	2,997.1	3,205.1	0.02	0.02	
9,610.8	0.16	240.97	8,949.0	1,135.8	2,997.0	3,205.0	0.00	0.00	PRICE_Marker (TVD)
9,700.0	0.18	240.97	9,038.2	1,135.7	2,996.8	3,204.8	0.02	0.02	
9,800.0	0.20	240.97	9,138.2	1,135.5	2,996.5	3,204.5	0.02	0.02	
9,900.0	0.22	240.97	9,238.2	1,135.4	2,996.2	3,204.1	0.02	0.02	
10,000.0	0.24	240.97	9,338.2	1,135.2	2,995.9	3,203.7	0.02	0.02	
10,100.0	0.26	240.97	9,438.2	1,135.0	2,995.5	3,203.3	0.02	0.02	
10,200.0	0.28	240.97	9,538.2	1,134.7	2,995.1	3,202.8	0.02	0.02	
10,300.0	0.30	240.97	9,638.2	1,134.5	2,994.6	3,202.3	0.02	0.02	
10,400.0	0.32	240.97	9,738.2	1,134.2	2,994.2	3,201.8	0.02	0.02	
10,500.0	0.34	240.97	9,838.2	1,133.9	2,993.7	3,201.2	0.02	0.02	
10,600.0	0.36	240.97	9,938.2	1,133.6	2,993.1	3,200.6	0.02	0.02	
10,700.0	0.38	240.97	10,038.2	1,133.3	2,992.6	3,200.0	0.02	0.02	
10,800.0	0.40	240.97	10,138.2	1,133.0	2,992.0	3,199.3	0.02	0.02	
10,900.0	0.42	240.97	10,238.2	1,132.7	2,991.3	3,198.6	0.02	0.02	
11,000.0	0.44	240.97	10,338.2	1,132.3	2,990.7	3,197.9	0.02	0.02	
11,100.0	0.46	240.97	10,438.2	1,131.9	2,990.0	3,197.1	0.02	0.02	
11,200.0	0.48	240.97	10,538.2	1,131.5	2,989.3	3,196.3	0.02	0.02	
11,300.0	0.50	240.97	10,638.2	1,131.1	2,988.5	3,195.4	0.02	0.02	
11,400.0	0.52	240.97	10,738.2	1,130.7	2,987.8	3,194.5	0.02	0.02	
11,489.8	0.54	240.97	10,828.0	1,130.3	2,987.0	3,193.7	0.02	0.02	CAMEO (TVD)
11,500.0	0.54	240.97	10,838.2	1,130.2	2,986.9	3,193.6	0.02	0.02	
11,600.0	0.56	240.97	10,938.2	1,129.7	2,986.1	3,192.7	0.02	0.02	
11,700.0	0.58	240.97	11,038.2	1,129.3	2,985.2	3,191.7	0.02	0.02	
11,800.0	0.60	240.97	11,138.2	1,128.8	2,984.3	3,190.7	0.02	0.02	
11,900.0	0.62	240.97	11,238.2	1,128.2	2,983.4	3,189.6	0.02	0.02	
12,000.0	0.64	240.97	11,338.2	1,127.7	2,982.4	3,188.5	0.02	0.02	
12,089.8	0.66	240.97	11,428.0	1,127.2	2,981.5	3,187.5	0.02	0.02	ROLLINS (TVD)
12,100.0	0.66	240.97	11,438.2	1,127.2	2,981.4	3,187.4	0.02	0.02	
12,200.0	0.68	240.97	11,538.2	1,126.6	2,980.4	3,186.2	0.02	0.02	
12,239.8	0.69	240.97	11,578.0	1,126.4	2,980.0	3,185.7	0.02	0.02	Drillers TD @ 12,239.8' MD
12,285.8	0.69	240.97	11,624.0	1,126.1	2,979.5	3,185.2	0.00	0.00	COZZETTE (TVD)
12,300.0	0.69	240.97	11,638.2	1,126.0	2,979.4	3,185.0	0.00	0.00	
12,400.0	0.69	240.97	11,738.1	1,125.4	2,978.3	3,183.8	0.00	0.00	
12,500.0	0.69	240.97	11,838.1	1,124.8	2,977.2	3,182.6	0.00	0.00	
12,500.9	0.69	240.97	11,839.0	1,124.8	2,977.2	3,182.6	0.00	0.00	CORCORAN (TVD)
12,600.0	0.69	240.97	11,938.1	1,124.2	2,976.2	3,181.5	0.00	0.00	
12,700.0	0.69	240.97	12,038.1	1,123.7	2,975.1	3,180.3	0.00	0.00	
12,713.9	0.69	240.97	12,052.0	1,123.6	2,975.0	3,180.1	0.00	0.00	UPPER_SEGO (TVD)
12,800.0	0.69	240.97	12,138.1	1,123.1	2,974.1	3,179.1	0.00	0.00	
12,900.0	0.69	240.97	12,238.1	1,122.5	2,973.0	3,177.9	0.00	0.00	
12,963.9	0.69	240.97	12,302.0	1,122.1	2,972.4	3,177.1	0.00	0.00	SEGO_BASE_TARGET (TVD)
13,000.0	0.69	240.97	12,338.1	1,121.9	2,972.0	3,176.7	0.00	0.00	
13,100.0	0.69	240.97	12,438.1	1,121.3	2,970.9	3,175.5	0.00	0.00	
13,200.0	0.69	240.97	12,538.1	1,120.7	2,969.9	3,174.3	0.00	0.00	
13,239.9	0.69	240.97	12,578.0	1,120.5	2,969.4	3,173.8	0.00	0.00	Permit TD @ 13,239.9' MD



# Cathedral Energy Services

## Planning Report

<b>Database:</b>	USA EDM 5000 Multi Users DB	<b>Local Co-ordinate Reference:</b>	Well 8510E-27 M27 496
<b>Company:</b>	EnCana Oil & Gas (USA) Inc	<b>TVD Reference:</b>	KBE @ 8121.0ft (Original Well Elev)
<b>Project:</b>	Story Gulch	<b>MD Reference:</b>	KBE @ 8121.0ft (Original Well Elev)
<b>Site:</b>	S27-T4S-R96W (M27 496)	<b>North Reference:</b>	True
<b>Well:</b>	8510E-27 M27 496	<b>Survey Calculation Method:</b>	Minimum Curvature
<b>Wellbore:</b>	DD		
<b>Design:</b>	Plan #2		

Targets									
Target Name									
- hit/miss target	Dip Angle	Dip Dir.	TVD	+N/-S	+E/-W	Northing	Easting	Latitude	Longitude
- Shape	(°)	(°)	(ft)	(ft)	(ft)	(ft)	(ft)		
M27 496 8510E-27 TGT	0.00	0.00	8,166.0	1,136.3	2,998.0	1,680,135.60	2,253,998.92	39° 40' 15.19 N	108° 9' 1.77 W
- plan hits target center									
- Point									
M27 496 8510E-27 PBH	0.00	0.00	11,578.0	1,126.4	2,980.0	1,680,126.14	2,253,980.63	39° 40' 15.09 N	108° 9' 2.00 W
- plan hits target center									
- Rectangle (sides W30.0 H50.0 D0.0)									

Formations						
Measured Depth	Vertical Depth	Name	Lithology	Dip	Dip Direction	
(ft)	(ft)			(°)	(°)	
1,119.7	1,086.0	A_GROOVE (TVD)				
1,285.2	1,237.0	B_GROOVE (TVD)				
2,355.9	2,214.0	Garden Gulch Member (TVD)				
5,911.2	5,458.0	WASATCH_G (TVD)				
8,280.3	7,626.0	WILLIAMS_FORK (TVD)				
8,321.9	7,666.0	TOG (TVD); Inc=15°				
9,610.8	8,949.0	PRICE_Marker (TVD)				
11,489.8	10,828.0	CAMEO (TVD)				
12,089.8	11,428.0	ROLLINS (TVD)				
12,285.8	11,624.0	COZZETTE (TVD)				
12,500.9	11,839.0	CORCORAN (TVD)				
12,713.9	12,052.0	UPPER_SEGO (TVD)				
12,963.9	12,302.0	SEGO_BASE_TARGET (TVD)				

Plan Annotations				
Measured Depth	Vertical Depth	Local Coordinates		Comment
(ft)	(ft)	+N/-S (ft)	+E/-W (ft)	
200.0	200.0	0.0	0.0	KOP @ 200'
1,005.2	981.6	59.3	156.4	EOB @ Inc. = 24.16°
8,022.6	7,384.4	1,077.1	2,841.6	Start 3° Drop
8,827.8	8,166.0	1,136.3	2,998.0	EOD @ Inc. = 0°
12,239.8	11,578.0	1,126.4	2,980.0	Drillers TD @ 12,239.8' MD
13,239.9	12,578.0	1,120.5	2,969.4	Permit TD @ 13,239.9' MD