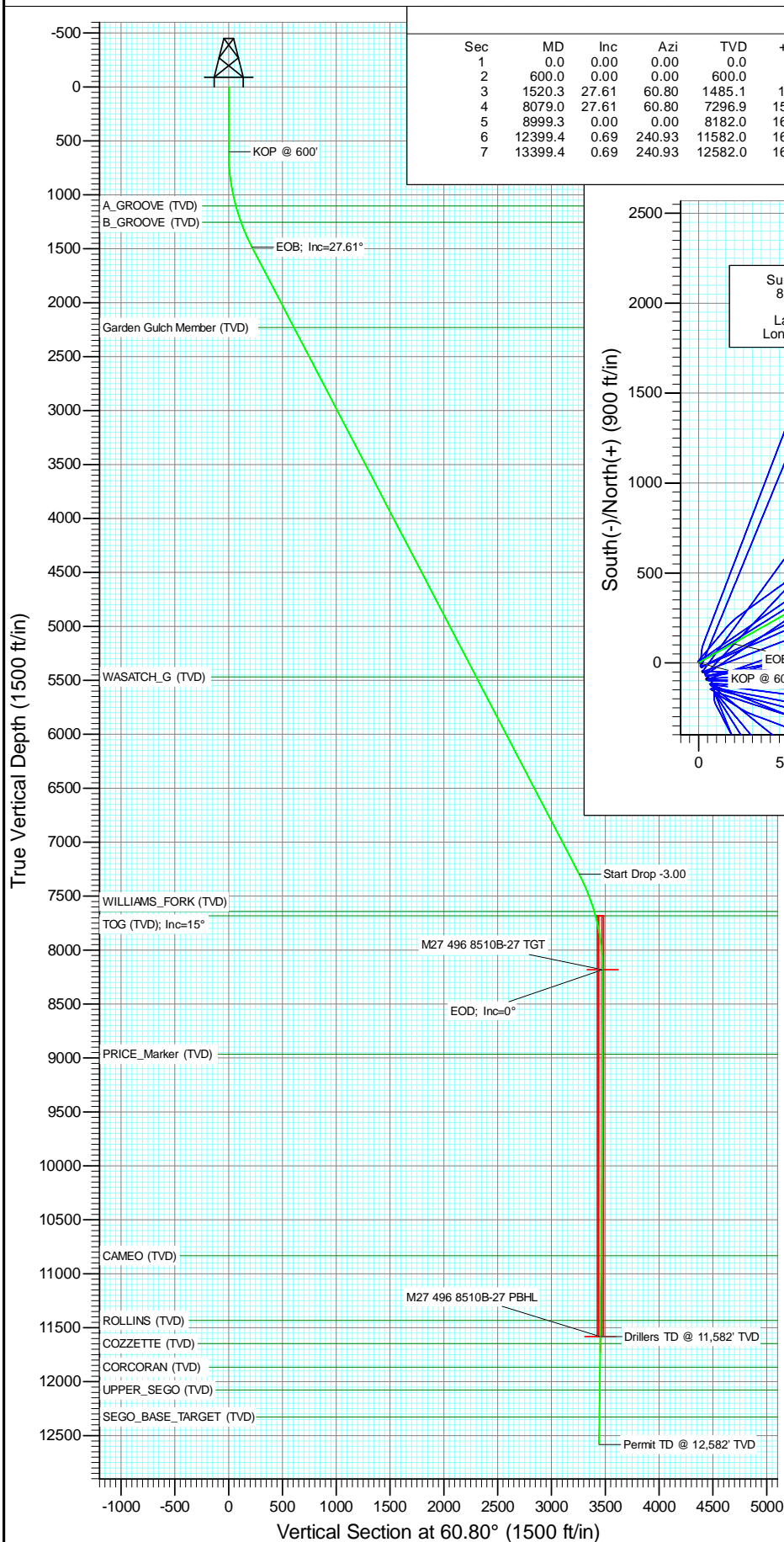


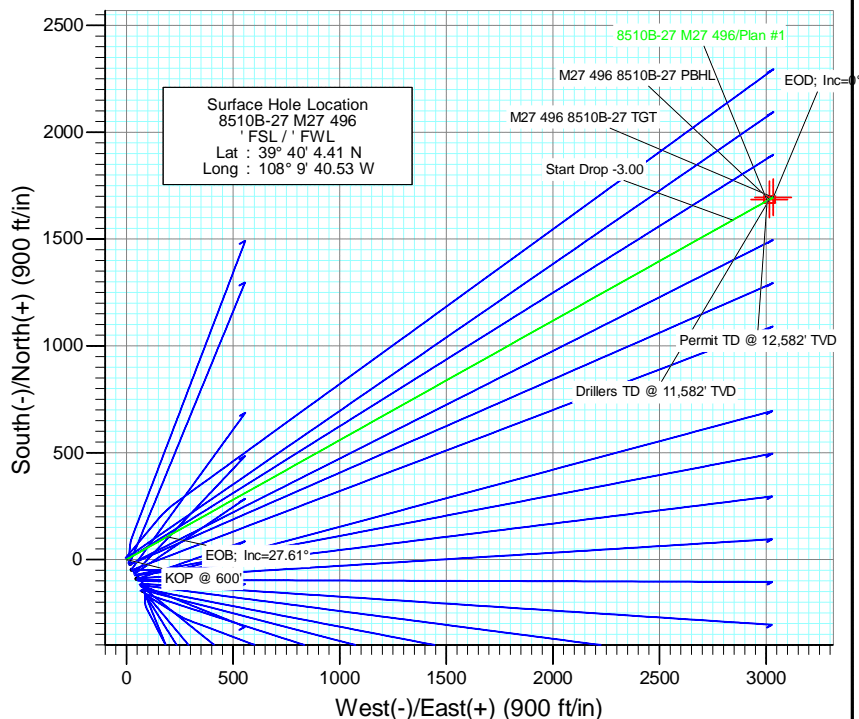


Project: Story Gulch  
Site: S27-T4S-R96W (M27 496)  
Well: 8510B-27 M27 496  
Wellbore: DD  
Design: Plan #1



SECTION DETAILS

Sec	MD	Inc	Azi	TVD	+N/-S	+E/-W	Dleg	TFace	VSect	Target
1	0.0	0.00	0.00	0.0	0.0	0.0	0.00	0.00	0.0	
2	600.0	0.00	0.00	600.0	0.0	0.0	0.00	0.00	0.0	
3	1520.3	27.61	60.80	1485.1	106.1	189.9	3.00	60.80	217.5	
4	8079.0	27.61	60.80	7296.9	1588.8	2843.2	0.00	0.00	3257.0	
5	8999.3	0.00	0.00	8182.0	1694.9	3033.1	3.00	180.00	3474.5	M27 496 8510B-27 TGT
6	12399.4	0.69	240.93	11582.0	1684.9	3015.1	0.02	240.93	3453.9	M27 496 8510B-27 PBHL
7	13399.4	0.69	240.93	12582.0	1679.0	3004.5	0.00	0.00	3441.8	



FORMATION TOP DETAILS

TVDPPath	MDPath	Formation
1103.0	1109.0	A_GROOVE (TVD)
1254.0	1267.5	B_GROOVE (TVD)
2230.0	2360.9	Garden Gulch Member (TVD)
5468.0	6015.0	WASATCH_G (TVD)
7642.0	8451.8	WILLIAMS_FORK (TVD)
7682.0	8493.4	TOG (TVD); Inc=15°
8964.0	9781.3	PRICE_Marker (TVD)
10832.0	11649.3	CAMEO (TVD)
11432.0	12249.3	ROLLINS (TVD)
11646.0	12463.4	COZZETTE (TVD)
11866.0	12683.4	CORCORAN (TVD)
12077.0	12894.4	UPPER_SEGO (TVD)
12327.0	13144.4	SEGO_BASE_TARGET (TVD)



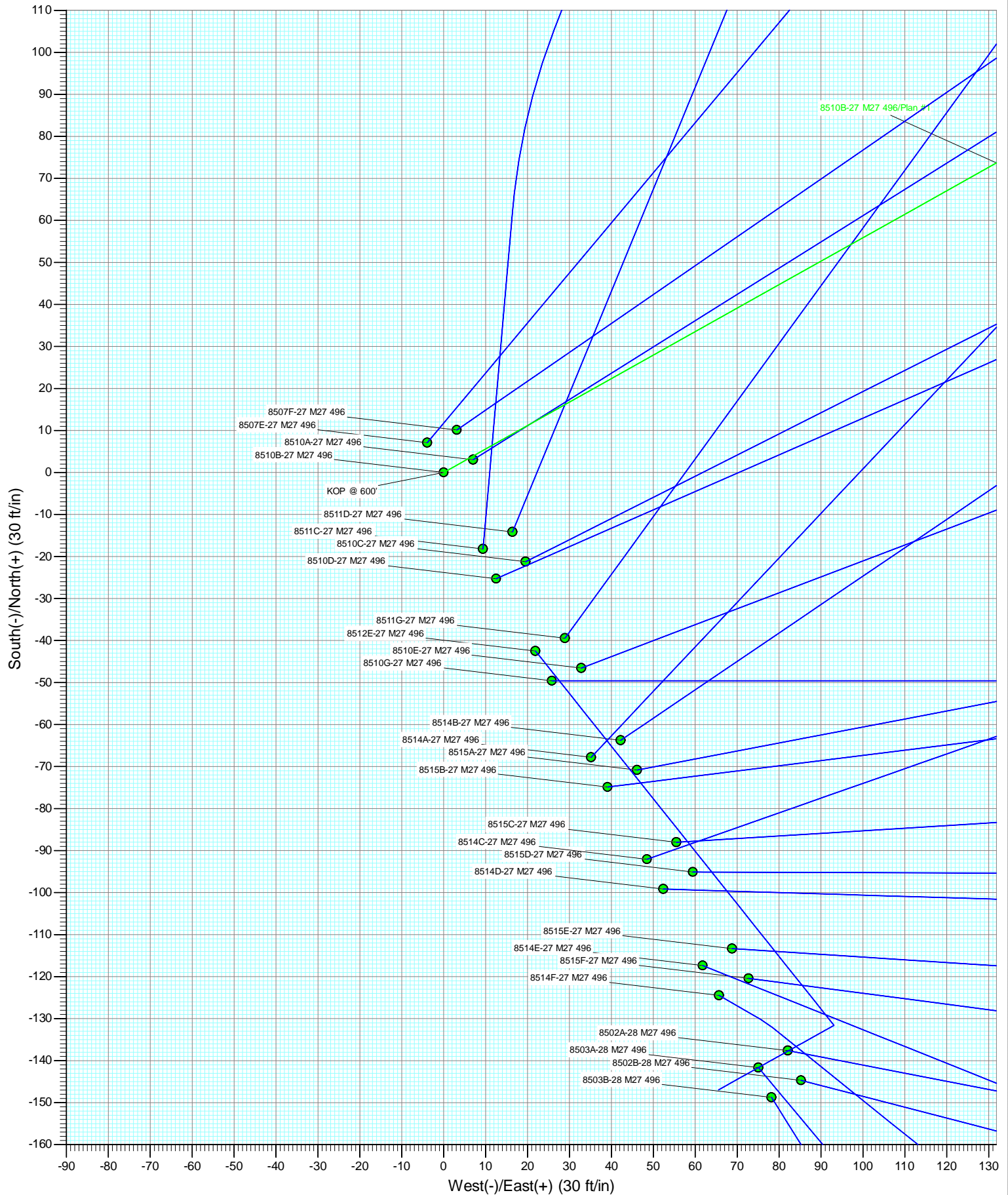
Azimuths to True North  
Magnetic North: 10.41°

Magnetic Field  
Strength: 52277.7nT  
Dip Angle: 65.84°  
Date: 9/21/2011  
Model: IGRF2010

Type	Target	Target	MDPath	Origin	N/S	E/W	From TVD
		M27 496 8510B-27 PBHL	60.80	Slot	0.0	0.0	0.0
Name	TVD	+N/-S	+E/-W	Latitude	Longitude		
M27 496 8510B-27 TGT	8182.0	1684.9	3033.1	39° 40' 21.16 N	108° 9' 1.74 W		
M27 496 8510B-27 PBHL	11582.0	1684.9	3015.1	39° 40' 21.06 N	108° 9' 1.97 W		

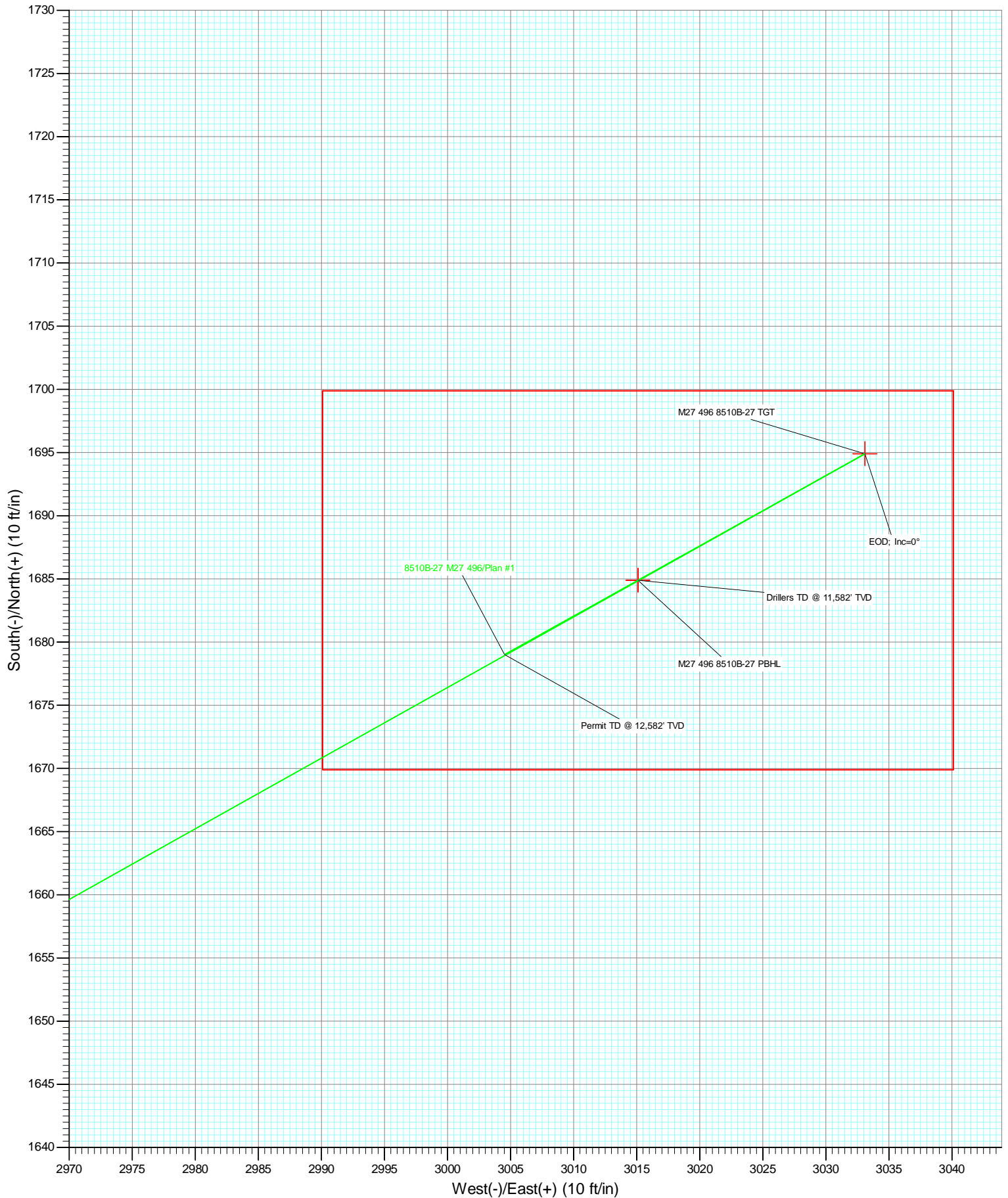


Project: Story Gulch  
Site: S27-T4S-R96W (M27 496)  
Well: 8510B-27 M27 496  
Wellbore: DD  
Design: Plan #1





Project: Story Gulch  
Site: S27-T4S-R96W (M27 496)  
Well: 8510B-27 M27 496  
Wellbore: DD  
Design: Plan #1



## Planning Report

<b>Database:</b>	USA EDM 5000 Multi Users DB	<b>Local Co-ordinate Reference:</b>	Well 8510B-27 M27 496
<b>Company:</b>	EnCana Oil & Gas (USA) Inc	<b>TVD Reference:</b>	KBE @ 8121.0ft (Original Well Elev)
<b>Project:</b>	Story Gulch	<b>MD Reference:</b>	KBE @ 8121.0ft (Original Well Elev)
<b>Site:</b>	S27-T4S-R96W (M27 496)	<b>North Reference:</b>	True
<b>Well:</b>	8510B-27 M27 496	<b>Survey Calculation Method:</b>	Minimum Curvature
<b>Wellbore:</b>	DD		
<b>Design:</b>	Plan #1		

<b>Project</b>	Story Gulch		
<b>Map System:</b>	US State Plane 1983	<b>System Datum:</b>	Mean Sea Level
<b>Geo Datum:</b>	North American Datum 1983		
<b>Map Zone:</b>	Colorado Central Zone		

<b>Site</b>	S27-T4S-R96W (M27 496)			
<b>Site Position:</b>		<b>Northing:</b>	1,678,990.24 ft	<b>Latitude:</b> 39° 40' 3.01 N
<b>From:</b>	Lat/Long	<b>Easting:</b>	2,251,008.33 ft	<b>Longitude:</b> 108° 9' 39.57 W
<b>Position Uncertainty:</b>	0.0 ft	<b>Slot Radius:</b>	13.200 in	<b>Grid Convergence:</b> -1.68 °

<b>Well</b>	8510B-27 M27 496			
<b>Well Position</b>	<b>+N/-S</b>	0.0 ft	<b>Northing:</b>	1,679,134.02 ft
	<b>+E/-W</b>	0.0 ft	<b>Easting:</b>	2,250,937.44 ft
<b>Position Uncertainty</b>	0.0 ft		<b>Wellhead Elevation:</b>	ft
			<b>Ground Level:</b>	8,099.0 ft

<b>Wellbore</b>	DD				
<b>Magnetics</b>	<b>Model Name</b>	<b>Sample Date</b>	<b>Declination (°)</b>	<b>Dip Angle (°)</b>	<b>Field Strength (nT)</b>
	IGRF2010	9/21/2011	10.41	65.84	52,278

<b>Design</b>	Plan #1			
<b>Audit Notes:</b>				
<b>Version:</b>	<b>Phase:</b>	PLAN	<b>Tie On Depth:</b>	0.0
<b>Vertical Section:</b>	<b>Depth From (TVD) (ft)</b>	<b>+N/-S (ft)</b>	<b>+E/-W (ft)</b>	<b>Direction (°)</b>
	0.0	0.0	0.0	60.80

<b>Plan Sections</b>										
Measured Depth (ft)	Inclination (°)	Azimuth (°)	Vertical Depth (ft)	+N/-S (ft)	+E/-W (ft)	Dogleg Rate (°/100ft)	Build Rate (°/100ft)	Turn Rate (°/100ft)	TFO (°)	Target
0.0	0.00	0.00	0.0	0.0	0.0	0.00	0.00	0.00	0.00	
600.0	0.00	0.00	600.0	0.0	0.0	0.00	0.00	0.00	0.00	
1,520.3	27.61	60.80	1,485.1	106.1	189.9	3.00	3.00	0.00	60.80	
8,079.0	27.61	60.80	7,296.9	1,588.8	2,843.2	0.00	0.00	0.00	0.00	
8,999.3	0.00	0.00	8,182.0	1,694.9	3,033.1	3.00	-3.00	0.00	180.00	M27 496 8510B-27 T
12,399.4	0.69	240.93	11,582.0	1,684.9	3,015.1	0.02	0.02	-3.50	240.93	M27 496 8510B-27 PI
13,399.4	0.69	240.93	12,582.0	1,679.0	3,004.5	0.00	0.00	0.00	0.00	

# Planning Report

<b>Database:</b>	USA EDM 5000 Multi Users DB	<b>Local Co-ordinate Reference:</b>	Well 8510B-27 M27 496
<b>Company:</b>	EnCana Oil & Gas (USA) Inc	<b>TVD Reference:</b>	KBE @ 8121.0ft (Original Well Elev)
<b>Project:</b>	Story Gulch	<b>MD Reference:</b>	KBE @ 8121.0ft (Original Well Elev)
<b>Site:</b>	S27-T4S-R96W (M27 496)	<b>North Reference:</b>	True
<b>Well:</b>	8510B-27 M27 496	<b>Survey Calculation Method:</b>	Minimum Curvature
<b>Wellbore:</b>	DD		
<b>Design:</b>	Plan #1		

## Planned Survey

Measured Depth (ft)	Inclination (°)	Azimuth (°)	Vertical Depth (ft)	+N/-S (ft)	+E/-W (ft)	Vertical Section (ft)	Dogleg Rate (°/100ft)	Build Rate (°/100ft)	Comments / Formations
0.0	0.00	0.00	0.0	0.0	0.0	0.0	0.00	0.00	
100.0	0.00	0.00	100.0	0.0	0.0	0.0	0.00	0.00	
200.0	0.00	0.00	200.0	0.0	0.0	0.0	0.00	0.00	
300.0	0.00	0.00	300.0	0.0	0.0	0.0	0.00	0.00	
400.0	0.00	0.00	400.0	0.0	0.0	0.0	0.00	0.00	
500.0	0.00	0.00	500.0	0.0	0.0	0.0	0.00	0.00	
600.0	0.00	0.00	600.0	0.0	0.0	0.0	0.00	0.00	KOP @ 600'
700.0	3.00	60.80	700.0	1.3	2.3	2.6	3.00	3.00	
800.0	6.00	60.80	799.6	5.1	9.1	10.5	3.00	3.00	
900.0	9.00	60.80	898.8	11.5	20.5	23.5	3.00	3.00	
1,000.0	12.00	60.80	997.1	20.4	36.4	41.7	3.00	3.00	
1,100.0	15.00	60.80	1,094.3	31.7	56.8	65.1	3.00	3.00	
1,109.0	15.27	60.80	1,103.0	32.9	58.9	67.4	3.00	3.00	A_GROOVE (TVD)
1,200.0	18.00	60.80	1,190.2	45.6	81.6	93.5	3.00	3.00	
1,267.5	20.03	60.80	1,254.0	56.3	100.8	115.5	3.00	3.00	B_GROOVE (TVD)
1,300.0	21.00	60.80	1,284.4	61.9	110.7	126.9	3.00	3.00	
1,400.0	24.00	60.80	1,376.8	80.5	144.1	165.1	3.00	3.00	
1,500.0	27.00	60.80	1,467.1	101.5	181.7	208.2	3.00	3.00	
1,520.3	27.61	60.80	1,485.1	106.1	189.9	217.5	3.00	3.00	EOB; Inc=27.61°
1,600.0	27.61	60.80	1,555.7	124.1	222.1	254.4	0.00	0.00	
1,700.0	27.61	60.80	1,644.3	146.7	262.5	300.8	0.00	0.00	
1,800.0	27.61	60.80	1,732.9	169.3	303.0	347.1	0.00	0.00	
1,900.0	27.61	60.80	1,821.6	191.9	343.5	393.4	0.00	0.00	
2,000.0	27.61	60.80	1,910.2	214.5	383.9	439.8	0.00	0.00	
2,100.0	27.61	60.80	1,998.8	237.1	424.4	486.1	0.00	0.00	
2,200.0	27.61	60.80	2,087.4	259.7	464.8	532.5	0.00	0.00	
2,300.0	27.61	60.80	2,176.0	282.4	505.3	578.8	0.00	0.00	
2,360.9	27.61	60.80	2,230.0	296.1	529.9	607.1	0.00	0.00	Garden Gulch Member (TVD)
2,400.0	27.61	60.80	2,264.6	305.0	545.7	625.2	0.00	0.00	
2,500.0	27.61	60.80	2,353.2	327.6	586.2	671.5	0.00	0.00	
2,600.0	27.61	60.80	2,441.8	350.2	626.7	717.9	0.00	0.00	
2,700.0	27.61	60.80	2,530.5	372.8	667.1	764.2	0.00	0.00	
2,800.0	27.61	60.80	2,619.1	395.4	707.6	810.5	0.00	0.00	
2,900.0	27.61	60.80	2,707.7	418.0	748.0	856.9	0.00	0.00	
3,000.0	27.61	60.80	2,796.3	440.6	788.5	903.2	0.00	0.00	
3,100.0	27.61	60.80	2,884.9	463.2	828.9	949.6	0.00	0.00	
3,200.0	27.61	60.80	2,973.5	485.8	869.4	995.9	0.00	0.00	
3,300.0	27.61	60.80	3,062.1	508.4	909.8	1,042.3	0.00	0.00	
3,400.0	27.61	60.80	3,150.7	531.0	950.3	1,088.6	0.00	0.00	
3,500.0	27.61	60.80	3,239.4	553.6	990.8	1,135.0	0.00	0.00	
3,600.0	27.61	60.80	3,328.0	576.2	1,031.2	1,181.3	0.00	0.00	
3,700.0	27.61	60.80	3,416.6	598.9	1,071.7	1,227.6	0.00	0.00	
3,800.0	27.61	60.80	3,505.2	621.5	1,112.1	1,274.0	0.00	0.00	
3,900.0	27.61	60.80	3,593.8	644.1	1,152.6	1,320.3	0.00	0.00	
4,000.0	27.61	60.80	3,682.4	666.7	1,193.0	1,366.7	0.00	0.00	
4,100.0	27.61	60.80	3,771.0	689.3	1,233.5	1,413.0	0.00	0.00	
4,200.0	27.61	60.80	3,859.6	711.9	1,274.0	1,459.4	0.00	0.00	
4,300.0	27.61	60.80	3,948.3	734.5	1,314.4	1,505.7	0.00	0.00	
4,400.0	27.61	60.80	4,036.9	757.1	1,354.9	1,552.1	0.00	0.00	
4,500.0	27.61	60.80	4,125.5	779.7	1,395.3	1,598.4	0.00	0.00	
4,600.0	27.61	60.80	4,214.1	802.3	1,435.8	1,644.7	0.00	0.00	
4,700.0	27.61	60.80	4,302.7	824.9	1,476.2	1,691.1	0.00	0.00	



# Planning Report

<b>Database:</b>	USA EDM 5000 Multi Users DB	<b>Local Co-ordinate Reference:</b>	Well 8510B-27 M27 496
<b>Company:</b>	EnCana Oil & Gas (USA) Inc	<b>TVD Reference:</b>	KBE @ 8121.0ft (Original Well Elev)
<b>Project:</b>	Story Gulch	<b>MD Reference:</b>	KBE @ 8121.0ft (Original Well Elev)
<b>Site:</b>	S27-T4S-R96W (M27 496)	<b>North Reference:</b>	True
<b>Well:</b>	8510B-27 M27 496	<b>Survey Calculation Method:</b>	Minimum Curvature
<b>Wellbore:</b>	DD		
<b>Design:</b>	Plan #1		

Planned Survey									
Measured Depth (ft)	Inclination (°)	Azimuth (°)	Vertical Depth (ft)	+N/-S (ft)	+E/-W (ft)	Vertical Section (ft)	Dogleg Rate (°/100ft)	Build Rate (°/100ft)	Comments / Formations
4,800.0	27.61	60.80	4,391.3	847.5	1,516.7	1,737.4	0.00	0.00	
4,900.0	27.61	60.80	4,479.9	870.1	1,557.2	1,783.8	0.00	0.00	
5,000.0	27.61	60.80	4,568.5	892.7	1,597.6	1,830.1	0.00	0.00	
5,100.0	27.61	60.80	4,657.2	915.4	1,638.1	1,876.5	0.00	0.00	
5,200.0	27.61	60.80	4,745.8	938.0	1,678.5	1,922.8	0.00	0.00	
5,300.0	27.61	60.80	4,834.4	960.6	1,719.0	1,969.2	0.00	0.00	
5,400.0	27.61	60.80	4,923.0	983.2	1,759.4	2,015.5	0.00	0.00	
5,500.0	27.61	60.80	5,011.6	1,005.8	1,799.9	2,061.8	0.00	0.00	
5,600.0	27.61	60.80	5,100.2	1,028.4	1,840.3	2,108.2	0.00	0.00	
5,700.0	27.61	60.80	5,188.8	1,051.0	1,880.8	2,154.5	0.00	0.00	
5,800.0	27.61	60.80	5,277.4	1,073.6	1,921.3	2,200.9	0.00	0.00	
5,900.0	27.61	60.80	5,366.1	1,096.2	1,961.7	2,247.2	0.00	0.00	
6,000.0	27.61	60.80	5,454.7	1,118.8	2,002.2	2,293.6	0.00	0.00	
6,015.0	27.61	60.80	5,468.0	1,122.2	2,008.3	2,300.5	0.00	0.00	WASATCH_G (TVD)
6,100.0	27.61	60.80	5,543.3	1,141.4	2,042.6	2,339.9	0.00	0.00	
6,200.0	27.61	60.80	5,631.9	1,164.0	2,083.1	2,386.3	0.00	0.00	
6,300.0	27.61	60.80	5,720.5	1,186.6	2,123.5	2,432.6	0.00	0.00	
6,400.0	27.61	60.80	5,809.1	1,209.2	2,164.0	2,478.9	0.00	0.00	
6,500.0	27.61	60.80	5,897.7	1,231.9	2,204.5	2,525.3	0.00	0.00	
6,600.0	27.61	60.80	5,986.3	1,254.5	2,244.9	2,571.6	0.00	0.00	
6,700.0	27.61	60.80	6,075.0	1,277.1	2,285.4	2,618.0	0.00	0.00	
6,800.0	27.61	60.80	6,163.6	1,299.7	2,325.8	2,664.3	0.00	0.00	
6,900.0	27.61	60.80	6,252.2	1,322.3	2,366.3	2,710.7	0.00	0.00	
7,000.0	27.61	60.80	6,340.8	1,344.9	2,406.7	2,757.0	0.00	0.00	
7,100.0	27.61	60.80	6,429.4	1,367.5	2,447.2	2,803.4	0.00	0.00	
7,200.0	27.61	60.80	6,518.0	1,390.1	2,487.7	2,849.7	0.00	0.00	
7,300.0	27.61	60.80	6,606.6	1,412.7	2,528.1	2,896.0	0.00	0.00	
7,400.0	27.61	60.80	6,695.2	1,435.3	2,568.6	2,942.4	0.00	0.00	
7,500.0	27.61	60.80	6,783.9	1,457.9	2,609.0	2,988.7	0.00	0.00	
7,600.0	27.61	60.80	6,872.5	1,480.5	2,649.5	3,035.1	0.00	0.00	
7,700.0	27.61	60.80	6,961.1	1,503.1	2,689.9	3,081.4	0.00	0.00	
7,800.0	27.61	60.80	7,049.7	1,525.7	2,730.4	3,127.8	0.00	0.00	
7,900.0	27.61	60.80	7,138.3	1,548.4	2,770.8	3,174.1	0.00	0.00	
8,000.0	27.61	60.80	7,226.9	1,571.0	2,811.3	3,220.5	0.00	0.00	
8,079.0	27.61	60.80	7,296.9	1,588.8	2,843.2	3,257.0	0.00	0.00	Start Drop -3.00
8,100.0	26.98	60.80	7,315.6	1,593.5	2,851.7	3,266.7	3.00	-3.00	
8,200.0	23.98	60.80	7,405.9	1,614.5	2,889.2	3,309.7	3.00	-3.00	
8,300.0	20.98	60.80	7,498.2	1,633.1	2,922.6	3,347.9	3.00	-3.00	
8,400.0	17.98	60.80	7,592.5	1,649.4	2,951.7	3,381.3	3.00	-3.00	
8,451.8	16.42	60.80	7,642.0	1,656.9	2,965.1	3,396.6	3.00	-3.00	WILLIAMS_FORK (TVD)
8,493.4	15.18	60.80	7,682.0	1,662.4	2,975.0	3,407.9	3.00	-3.00	TOG (TVD); Inc=15°
8,500.0	14.98	60.80	7,688.4	1,663.2	2,976.5	3,409.6	3.00	-3.00	
8,600.0	11.98	60.80	7,785.6	1,674.6	2,996.8	3,432.9	3.00	-3.00	
8,700.0	8.98	60.80	7,884.0	1,683.5	3,012.7	3,451.1	3.00	-3.00	
8,800.0	5.98	60.80	7,983.1	1,689.8	3,024.0	3,464.1	3.00	-3.00	
8,900.0	2.98	60.80	8,082.8	1,693.6	3,030.8	3,472.0	3.00	-3.00	
8,999.3	0.00	0.00	8,182.0	1,694.9	3,033.1	3,474.5	3.00	-3.00	EOD; Inc=0° - M27 496 8510B-27 TGT
9,000.0	0.00	240.93	8,182.7	1,694.9	3,033.1	3,474.5	0.00	0.00	
9,100.0	0.02	240.93	8,282.7	1,694.9	3,033.1	3,474.5	0.02	0.02	
9,200.0	0.04	240.93	8,382.7	1,694.9	3,033.0	3,474.5	0.02	0.02	
9,300.0	0.06	240.93	8,482.7	1,694.8	3,033.0	3,474.4	0.02	0.02	
9,400.0	0.08	240.93	8,582.7	1,694.8	3,032.9	3,474.2	0.02	0.02	

# Planning Report

<b>Database:</b>	USA EDM 5000 Multi Users DB	<b>Local Co-ordinate Reference:</b>	Well 8510B-27 M27 496
<b>Company:</b>	EnCana Oil & Gas (USA) Inc	<b>TVD Reference:</b>	KBE @ 8121.0ft (Original Well Elev)
<b>Project:</b>	Story Gulch	<b>MD Reference:</b>	KBE @ 8121.0ft (Original Well Elev)
<b>Site:</b>	S27-T4S-R96W (M27 496)	<b>North Reference:</b>	True
<b>Well:</b>	8510B-27 M27 496	<b>Survey Calculation Method:</b>	Minimum Curvature
<b>Wellbore:</b>	DD		
<b>Design:</b>	Plan #1		

Planned Survey									
Measured Depth (ft)	Inclination (°)	Azimuth (°)	Vertical Depth (ft)	+N/-S (ft)	+E/-W (ft)	Vertical Section (ft)	Dogleg Rate (°/100ft)	Build Rate (°/100ft)	Comments / Formations
9,500.0	0.10	240.93	8,682.7	1,694.7	3,032.7	3,474.1	0.02	0.02	
9,600.0	0.12	240.93	8,782.7	1,694.6	3,032.5	3,473.9	0.02	0.02	
9,700.0	0.14	240.93	8,882.7	1,694.5	3,032.3	3,473.7	0.02	0.02	
9,781.3	0.16	240.93	8,964.0	1,694.4	3,032.1	3,473.4	0.02	0.02	PRICE_Marker (TVD)
9,800.0	0.16	240.93	8,982.7	1,694.3	3,032.1	3,473.4	0.02	0.02	
9,900.0	0.18	240.93	9,082.7	1,694.2	3,031.8	3,473.1	0.02	0.02	
10,000.0	0.20	240.93	9,182.7	1,694.0	3,031.5	3,472.7	0.02	0.02	
10,100.0	0.22	240.93	9,282.7	1,693.9	3,031.2	3,472.4	0.02	0.02	
10,200.0	0.25	240.93	9,382.7	1,693.7	3,030.9	3,472.0	0.02	0.02	
10,300.0	0.27	240.93	9,482.7	1,693.4	3,030.5	3,471.5	0.02	0.02	
10,400.0	0.29	240.93	9,582.7	1,693.2	3,030.0	3,471.0	0.02	0.02	
10,500.0	0.31	240.93	9,682.7	1,693.0	3,029.6	3,470.5	0.02	0.02	
10,600.0	0.33	240.93	9,782.7	1,692.7	3,029.1	3,470.0	0.02	0.02	
10,700.0	0.35	240.93	9,882.7	1,692.4	3,028.6	3,469.4	0.02	0.02	
10,800.0	0.37	240.93	9,982.7	1,692.1	3,028.1	3,468.8	0.02	0.02	
10,900.0	0.39	240.93	10,082.7	1,691.8	3,027.5	3,468.1	0.02	0.02	
11,000.0	0.41	240.93	10,182.7	1,691.4	3,026.9	3,467.4	0.02	0.02	
11,100.0	0.43	240.93	10,282.7	1,691.1	3,026.2	3,466.7	0.02	0.02	
11,200.0	0.45	240.93	10,382.7	1,690.7	3,025.6	3,465.9	0.02	0.02	
11,300.0	0.47	240.93	10,482.7	1,690.3	3,024.9	3,465.1	0.02	0.02	
11,400.0	0.49	240.93	10,582.7	1,689.9	3,024.1	3,464.3	0.02	0.02	
11,500.0	0.51	240.93	10,682.7	1,689.5	3,023.4	3,463.4	0.02	0.02	
11,600.0	0.53	240.93	10,782.7	1,689.0	3,022.6	3,462.5	0.02	0.02	
11,649.3	0.54	240.93	10,832.0	1,688.8	3,022.2	3,462.0	0.02	0.02	CAMEO (TVD)
11,700.0	0.55	240.93	10,882.7	1,688.6	3,021.7	3,461.5	0.02	0.02	
11,800.0	0.57	240.93	10,982.7	1,688.1	3,020.9	3,460.6	0.02	0.02	
11,900.0	0.59	240.93	11,082.7	1,687.6	3,020.0	3,459.5	0.02	0.02	
12,000.0	0.61	240.93	11,182.7	1,687.1	3,019.1	3,458.5	0.02	0.02	
12,100.0	0.63	240.93	11,282.7	1,686.6	3,018.1	3,457.4	0.02	0.02	
12,200.0	0.65	240.93	11,382.7	1,686.0	3,017.2	3,456.3	0.02	0.02	
12,249.3	0.66	240.93	11,432.0	1,685.8	3,016.7	3,455.7	0.02	0.02	ROLLINS (TVD)
12,300.0	0.67	240.93	11,482.7	1,685.5	3,016.1	3,455.1	0.02	0.02	
12,399.4	0.69	240.93	11,582.0	1,684.9	3,015.1	3,453.9	0.02	0.02	Drillers TD @ 11,582' TVD - M27 496 8510B-27
12,400.0	0.69	240.93	11,582.6	1,684.9	3,015.1	3,453.9	0.00	0.00	
12,463.4	0.69	240.93	11,646.0	1,684.5	3,014.4	3,453.2	0.00	0.00	COZZETTE (TVD)
12,500.0	0.69	240.93	11,682.6	1,684.3	3,014.0	3,452.7	0.00	0.00	
12,600.0	0.69	240.93	11,782.6	1,683.7	3,013.0	3,451.5	0.00	0.00	
12,683.4	0.69	240.93	11,866.0	1,683.2	3,012.1	3,450.5	0.00	0.00	CORCORAN (TVD)
12,700.0	0.69	240.93	11,882.6	1,683.1	3,011.9	3,450.3	0.00	0.00	
12,800.0	0.69	240.93	11,982.6	1,682.5	3,010.9	3,449.1	0.00	0.00	
12,894.4	0.69	240.93	12,077.0	1,682.0	3,009.9	3,448.0	0.00	0.00	UPPER_SEGO (TVD)
12,900.0	0.69	240.93	12,082.6	1,682.0	3,009.8	3,447.9	0.00	0.00	
13,000.0	0.69	240.93	12,182.6	1,681.4	3,008.7	3,446.7	0.00	0.00	
13,100.0	0.69	240.93	12,282.6	1,680.8	3,007.7	3,445.5	0.00	0.00	
13,144.4	0.69	240.93	12,327.0	1,680.5	3,007.2	3,444.9	0.00	0.00	SEGO_BASE_TARGET (TVD)
13,200.0	0.69	240.93	12,382.6	1,680.2	3,006.6	3,444.2	0.00	0.00	
13,300.0	0.69	240.93	12,482.6	1,679.6	3,005.6	3,443.0	0.00	0.00	
13,399.4	0.69	240.93	12,582.0	1,679.0	3,004.5	3,441.8	0.00	0.00	Permit TD @ 12,582' TVD

## Planning Report

<b>Database:</b>	USA EDM 5000 Multi Users DB	<b>Local Co-ordinate Reference:</b>	Well 8510B-27 M27 496
<b>Company:</b>	EnCana Oil & Gas (USA) Inc	<b>TVD Reference:</b>	KBE @ 8121.0ft (Original Well Elev)
<b>Project:</b>	Story Gulch	<b>MD Reference:</b>	KBE @ 8121.0ft (Original Well Elev)
<b>Site:</b>	S27-T4S-R96W (M27 496)	<b>North Reference:</b>	True
<b>Well:</b>	8510B-27 M27 496	<b>Survey Calculation Method:</b>	Minimum Curvature
<b>Wellbore:</b>	DD		
<b>Design:</b>	Plan #1		

Targets									
Target Name									
- hit/miss target	Dip Angle	Dip Dir.	TVD	+N/-S	+E/-W	Northing	Easting	Latitude	Longitude
- Shape	(°)	(°)	(ft)	(ft)	(ft)	(ft)	(ft)		
M27 496 8510B-27 TGT	0.00	0.00	8,182.0	1,694.9	3,033.1	1,680,739.36	2,254,018.88	39° 40' 21.16 N	108° 9' 1.74 W
- plan hits target center									
- Point									
M27 496 8510B-27 PBH	0.00	0.00	11,582.0	1,684.9	3,015.1	1,680,729.89	2,254,000.60	39° 40' 21.06 N	108° 9' 1.97 W
- plan hits target center									
- Rectangle (sides W30.0 H50.0 D0.0)									

Formations						
Measured Depth	Vertical Depth	Name	Lithology	Dip	Dip Direction	
(ft)	(ft)			(°)	(°)	
1,109.0	1,103.0	A_GROOVE (TVD)				
1,267.5	1,254.0	B_GROOVE (TVD)				
2,360.9	2,230.0	Garden Gulch Member (TVD)				
6,015.0	5,468.0	WASATCH_G (TVD)				
8,451.8	7,642.0	WILLIAMS_FORK (TVD)				
8,493.4	7,682.0	TOG (TVD); Inc=15°				
9,781.3	8,964.0	PRICE_Marker (TVD)				
11,649.3	10,832.0	CAMEO (TVD)				
12,249.3	11,432.0	ROLLINS (TVD)				
12,463.4	11,646.0	COZZETTE (TVD)				
12,683.4	11,866.0	CORCORAN (TVD)				
12,894.4	12,077.0	UPPER_SEGO (TVD)				
13,144.4	12,327.0	SEGO_BASE_TARGET (TVD)				

Plan Annotations				
Measured Depth	Vertical Depth	Local Coordinates		
(ft)	(ft)	+N/-S	+E/-W	Comment
(ft)	(ft)	(ft)	(ft)	
600.0	600.0	0.0	0.0	KOP @ 600'
1,520.3	1,485.1	106.1	189.9	EOB; Inc=27.61°
8,079.0	7,296.9	1,588.8	2,843.2	Start Drop -3.00
8,999.3	8,182.0	1,694.9	3,033.1	EOD; Inc=0°
12,399.4	11,582.0	1,684.9	3,015.1	Drillers TD @ 11,582' TVD
13,399.4	12,582.0	1,679.0	3,004.5	Permit TD @ 12,582' TVD



# **EnCana Oil & Gas (USA) Inc**

**Story Gulch**

**S27-T4S-R96W (M27 496)**

**8510B-27 M27 496**

**DD**

**Plan #1**

## **Anticollision Report**

**27 September, 2011**