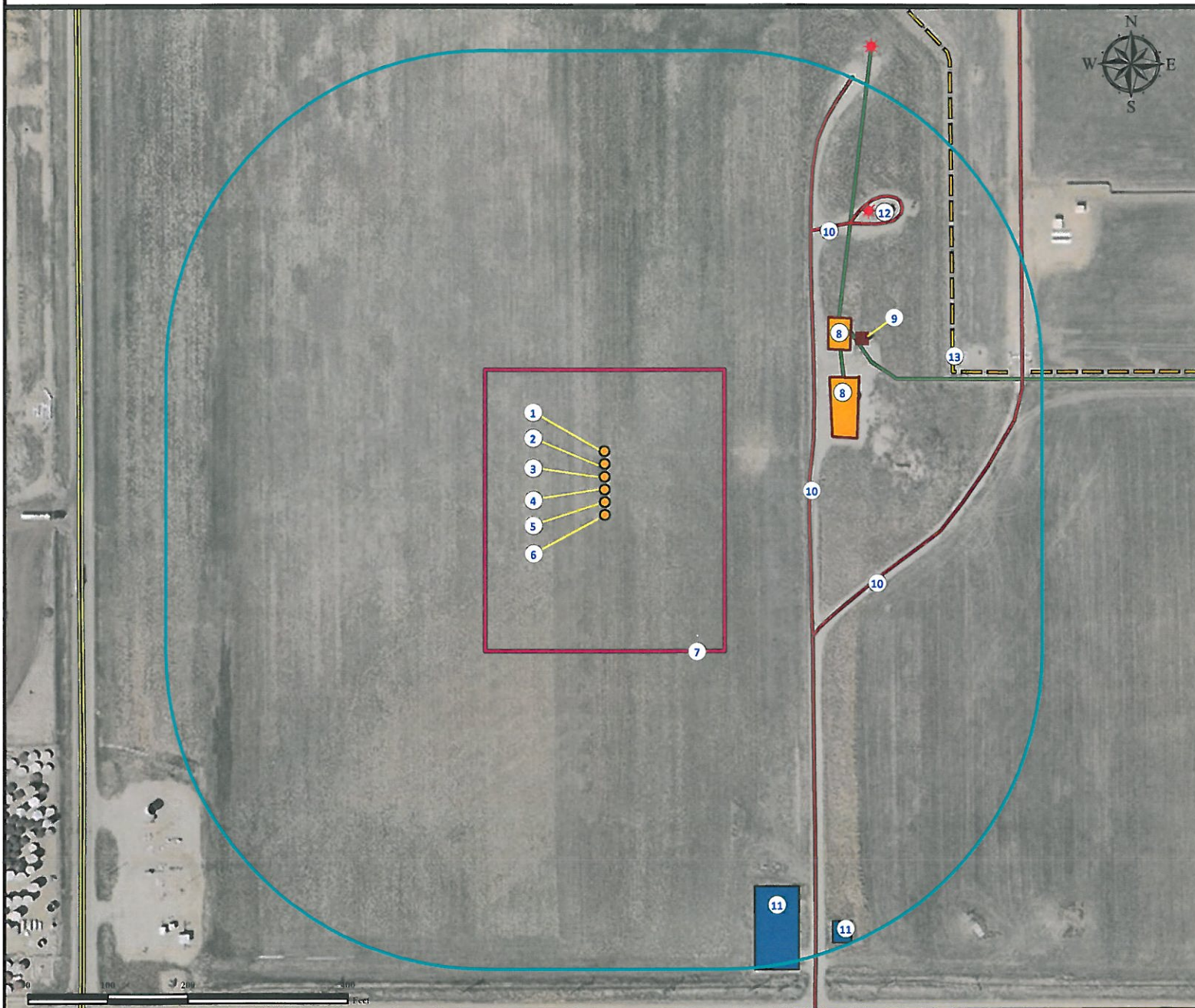


# Location Drawing

## XCEL 36-27

### Multi Well Pad

SW¼ SW¼ SECTION 27, TOWNSHIP 1 NORTH, RANGE 67 WEST OF THE 6TH PRINCIPAL MERIDIAN



- |                              |  |   |                        |
|------------------------------|--|---|------------------------|
| 1. Proposed well XCEL 12-27. | 5. Proposed well XCEL 34-27.             | 9. Emissions Control Device is ±374' NE.            | 13. Fence is ±462' NE. |
| 2. Proposed well XCEL 14-27. | 6. Proposed well XCEL 35-27.             | 10. Private roads are ±256' E, ±318' SE, & ±415' NE |                        |
| 3. Proposed well XCEL 13-27. | 7. Operational Disturbance Area.         | 11. Pipeline enclosures are ±533' SE & ±614' SE.    |                        |
| 4. Proposed well XCEL 36-27. | 8. Facilities are ±293' NE and ±334' NE. | 12. Existing well UPRR 42 PAN AM C is ±481' NE.     |                        |

#### Legend

- |               |                      |                      |
|---------------|----------------------|----------------------|
| Proposed Well | Disturbance Area     | Public Road          |
| ECD           | 400' Radius          | Private Road         |
| Existing Well | Facilities Enclosure | Underground Pipeline |
|               | Oil & Gas Equipment  | Fence                |

#### Reference Location

\*\* All Measurements are Made from Reference Well XCEL 36-27 \*\*

Lat: 40.016639° Long: -104.883694° (NAD83)  
Elevation: 5026 Feet

Surface Use: Dryland Crop



Use our resources to find yours!  
[www.petro-fs.com](http://www.petro-fs.com)  
(303) 928-7128

Field Date: 06/29/2011  
Drafting Date: 07/05/2011  
Drafter: DMM  
Checked By: BHF

Data Sources:  
- Aerial courtesy of NAIP (2009)

Prepared for: **Anadarko**  
Petroleum Corporation  
**KERR-MCGEE OIL & GAS ONSHORE LP**