
BILL BARRETT CORP.

**Kaufman 31B-25-692
MAMM CREEK
Garfield County , Colorado**

Surface Casing
10-Dec-2011

Post Job Report

HALLIBURTON

Cementing Job Summary

The Road to Excellence Starts with Safety

Sold To #: 343492	Ship To #: 2894958	Quote #:	Sales Order #: 9112141
Customer: BILL BARRETT CORPORATION E-BILL		Customer Rep: Lauer, Casey	
Well Name: KAUFMAN	Well #: 31B-25-692	API/UWI #: 05-045-21139	
Field: MAMM CREEK	City (SAP): SILT	County/Parish: Garfield	State: Colorado
Lat: N 39.502 deg. OR N 39 deg. 30 min. 8.654 secs.		Long: W 107.618 deg. OR W -108 deg. 22 min. 53.897 secs.	
Contractor: PROPETRO		Rig/Platform Name/Num: PROPETRO	
Job Purpose: Cement Surface Casing			
Well Type: Development Well		Job Type: Cement Surface Casing	
Sales Person: FLING, MATTHEW	Srvc Supervisor: PHILLIPS, MARK	MBU ID Emp #: 445272	

Job Personnel

HES Emp Name	Exp Hrs	Emp #	HES Emp Name	Exp Hrs	Emp #	HES Emp Name	Exp Hrs	Emp #
JENSEN, JESSE Robert	24	478774	KEANE, JOHN Donovan	24	486519	PHILLIPS, MARK Bejar	24	445272
WALPOLE, DARREN Livingston	24	485294						

Equipment

HES Unit #	Distance-1 way	HES Unit #	Distance-1 way	HES Unit #	Distance-1 way	HES Unit #	Distance-1 way

Job Hours

Date	On Location Hours	Operating Hours	Date	On Location Hours	Operating Hours	Date	On Location Hours	Operating Hours
12-10-11	24	2						
TOTAL			Total is the sum of each column separately					

Job

Formation Name	Top	Bottom	Called Out	Date	Time	Time Zone
Formation Depth (MD)			On Location	10 - Dec - 2011	13:00	MST
Form Type		BHST	Job Started	10 - Dec - 2011	17:00	MST
Job depth MD	750. ft	Job Depth TVD	Job Completed	10 - Dec - 2011	22:51	MST
Water Depth		Wk Ht Above Floor	Departed Loc	10 - Dec - 2011	23:27	MST
Perforation Depth (MD)	From	To				

Well Data

Description	New / Used	Max pressure psig	Size in	ID in	Weight lbm/ft	Thread	Grade	Top MD ft	Bottom MD ft	Top TVD ft	Bottom TVD ft
OPEN HOLE SURFACE CASING	New		9.625	12.375	36		J-55		750		
				8.921					734.8		

Sales/Rental/3rd Party (HES)

Description	Qty	Qty uom	Depth	Supplier
PLUG,CMTG, TOP, 9 5/8, HWE, 8.16 MIN/9.06 MA	1	EA		
R/A DENSOMETER W/CHART RECORDER, /JOB, ZI	1	JOB		
ADC (AUTO DENSITY CTRL) SYS, /JOB, ZI	1	JOB		
PORT. DATA ACQUIS. W/OPTICEM RT W/HES	1	EA		

Tools and Accessories

Type	Size	Qty	Make	Depth	Type	Size	Qty	Make	Depth	Type	Size	Qty	Make
Guide Shoe					Packer					Top Plug	9.625	1	HES
Float Shoe					Bridge Plug					Bottom Plug			
Float Collar				689.8	Retainer					SSR plug set			
Insert Float										Plug Container	9.625	1	HES
Stage Tool										Centralizers			

Miscellaneous Materials

Gelling Agt	Conc	Surfactant	Conc	Acid Type	Qty	Conc	%
Treatment Fld	Conc	Inhibitor	Conc	Sand Type	Size		

HALLIBURTON

Cementing Job Summary

Fluid Data									
Stage/Plug #: 1									
Fluid #	Stage Type	Fluid Name	Qty	Qty uom	Mixing Density lbm/gal	Yield ft ³ /sk	Mix Fluid Gal/sk	Rate bbl/min	Total Mix Fluid Gal/sk
1	WATER SPACER		20.00	bbl	8.34	.0	.0	2.0	
2	Lead Cement	VERSACEM (TM) SYSTEM (452010)	120.0	sacks	12.3	2.38	13.77	6.0	13.77
	0.25 lbm	POLY-E-FLAKE (101216940)							
	13.77 Gal	FRESH WATER							
3	Tail Cement	SWIFTCEM (TM) SYSTEM (452990)	120.0	sacks	14.2	1.43	6.85	6.0	6.85
	0.25 lbm	POLY-E-FLAKE (101216940)							
	6.85 Gal	FRESH WATER							
4	DISPLACEMENT		53.00	bbl	8.4			6.0	
Calculated Values		Pressures		Volumes					
Displacement	53.3	Shut In: Instant		Lost Returns	0	Cement Slurry	81	Pad	
Top Of Cement	SURFACE	5 Min		Cement Returns	30	Actual Displacement	53.3	Treatment	
Frac Gradient		15 Min		Spacers		Load and Breakdown		Total Job	154
Rates									
Circulating	AIR	Mixing	6	Displacement	6	Avg. Job	6		
Cement Left In Pipe	Amount	45 ft	Reason	Shoe Joint					
Frac Ring # 1 @	ID	Frac ring # 2 @	ID	Frac Ring # 3 @	ID	Frac Ring # 4 @	ID		
The Information Stated Herein Is Correct				Customer Representative Signature <i>Casey Lane</i>					

HALLIBURTON

Cementing Job Log

The Road to Excellence Starts with Safety

Sold To #: 343492	Ship To #: 2894958	Quote #:	Sales Order #: 9112141
Customer: BILL BARRETT CORPORATION E-BILL		Customer Rep: Lauer, Casey	
Well Name: KAUFMAN	Well #: 31B-25-692	API/UWI #: 05-045-21139	
Field: MAMM CREEK	City (SAP): SILT	County/Parish: Garfield	State: Colorado
Legal Description:			
Lat: N 39.502 deg. OR N 39 deg. 30 min. 8.654 secs.		Long: W 107.618 deg. OR W -108 deg. 22 min. 53.897 secs.	
Contractor: PROPETRO		Rig/Platform Name/Num: PROPETRO	
Job Purpose: Cement Surface Casing			Ticket Amount:
Well Type: Development Well		Job Type: Cement Surface Casing	
Sales Person: FLING, MATTHEW		Srv Supervisor: PHILLIPS, MARK	
		MBU ID Emp #: 445272	

Activity Description	Date/Time	Cht #	Rate bbl/min	Volume bbl		Pressure psig		Comments
				Stage	Total	Tubing	Casing	
Call Out	12/10/2011 19:00							CREW ALREADY ON LOCATION, BULK TRUCK DRIVER WILL BE ROUND TRIPPING FOR CEMENT POST EACH JOB.
Pre-Convoy Safety Meeting	12/10/2011 19:30							BULK DRIVER ONLY
Arrive At Loc	12/10/2011 21:45							RIG CREW DRILLING
Assessment Of Location Safety Meeting	12/10/2011 22:00							ALL HES EMPLOYEES, LOCATION ASSESSED BEFORE START OF EACH JOB.
Rig-Up Equipment	12/10/2011 22:05							1 HT-400 CEMENT PUMP, 1 660FT3 BULK TRUCK, 1 9.625" SCREW ON PLUG CONTAINER
Pre-Job Safety Meeting	12/10/2011 22:30							ALL HES EMPLOYEES, RIG CREW, COMPANY REP, 3RD PARTY VENDORS
Start Job	12/10/2011 22:51							TD:750 FT TP:734.79 FT SJ:45.0 , OPEN HOLE: 12.375" CASING: 9.625", J55 8RD, 36 LB/FT, HES FLOAT EQUIPMENT USED.
Pump Water	12/10/2011 22:51		2	2			20.0	FRESH WATER
Pressure Test	12/10/2011 22:52		0.5			3500.0		NO LEAKS
Pump Spacer 1	12/10/2011 22:56		2	20			100.0	FRESH WATER

Sold To #: 343492

Ship To #: 2894958

Quote #:

Sales Order #:

9112141

SUMMIT Version: 7.2.27

Sundav. December 11. 2011 09:59:00

HALLIBURTON

Cementing Job Log

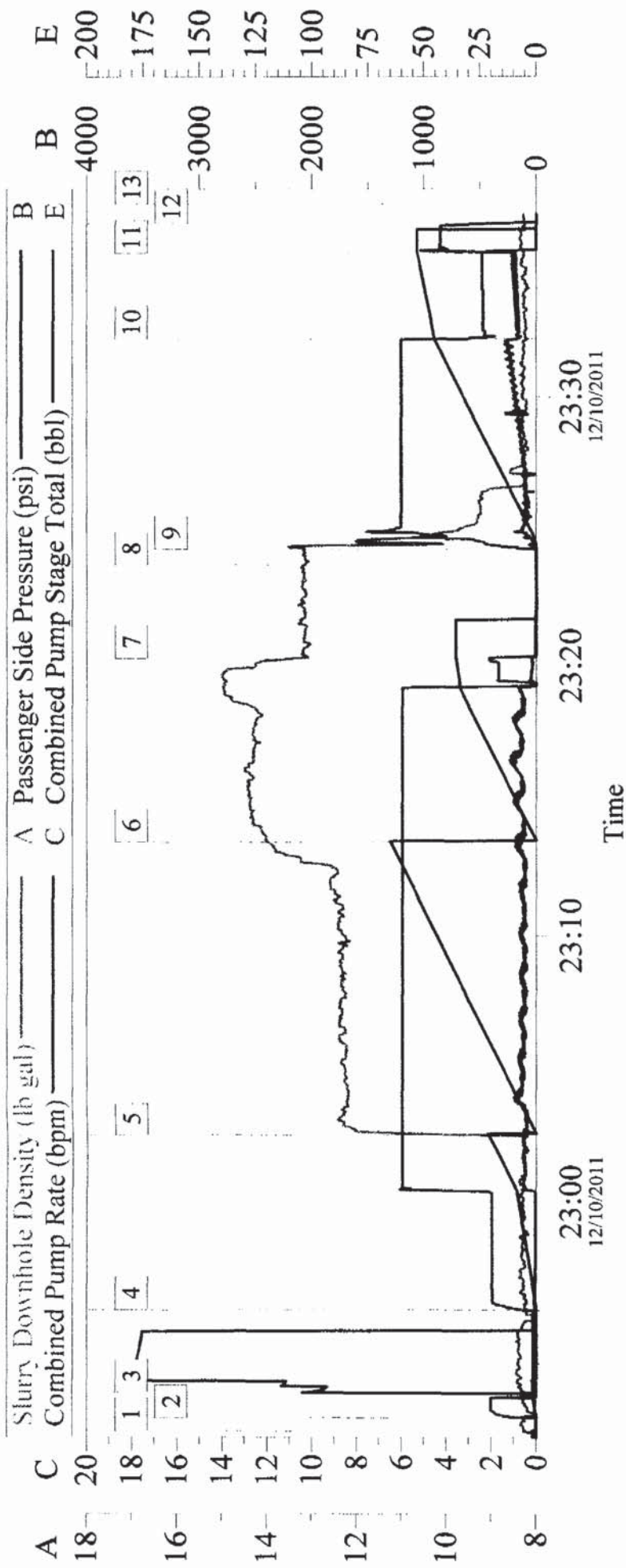
Activity Description	Date/Time	Cht #	Rate bbl/min	Volume bbl		Pressure psig		Comments
				Stage	Total	Tubing	Casing	
Pump Lead Cement	12/10/2011 23:02		6	51			120.0	120SKS VERSACEM MIXED @ 12.3PPG, 2.38FT3/SK, 13.75GALS/SK, WEIGHED VIA PRESSURE BALANCED MUD SCALES, WET AND DRY SAMPLES SUBMITTED
Pump Tail Cement	12/10/2011 23:13		6	31			150.0	120SKS SWIFTCM MIXED @ 14.2PPG, 1.43FT3/SK, 6.88GALS/SK, WEIGHED VIA PRESSURE BALANCED MUD SCALES, WET AND DRY SAMPLES SUBMITTED, RETURNS NOTED TO SURFACE WITH 20 BBLS AWAY ON TAIL CMT.
Shutdown	12/10/2011 23:20							
Drop Plug	12/10/2011 23:23							PLUG LAUNCHED
Pump Displacement	12/10/2011 23:24		6	53.3			220.0	FRESH WATER
Cement Returns to Surface	12/10/2011 23:30		6	22				30 BBLS CMT RETURNED TO SURFACE
Slow Rate	12/10/2011 23:32		2.5	43			190.0	SLOW RATE 10BBL PRIOR TO CALCULATED DISPLACEMENT
Bump Plug	12/10/2011 23:35		2.5	53.3			1000.0	PLUG LANDED
Check Floats	12/10/2011 23:36							FLOATS HELD
End Job	12/10/2011 23:37							THANK YOU FOR USING HALLIBURTON ENERGY SERVICES FROM MARK PHILLIPS AND CREW
Post-Job Safety Meeting (Pre Rig-Down)	12/10/2011 23:40							ALL HES EMPLOYEES

HALLIBURTON

Cementing Job Log

Activity Description	Date/Time	Cht #	Rate bbl/ min	Volume bbl		Pressure psig		Comments
				Stage	Total	Tubing	Casing	
Rig-Down Equipment	12/10/2011 23:45							
Pre-Convoy Safety Meeting	12/11/2011 00:30							ALL HES EMPLOYEES
Crew Leave Location	12/11/2011 00:40							CREW WILL LEAVE LOCATION TO ROUND TRIP FOR FINAL TWO BULK TRUCKS.

BILL BARRETT CORP KAUFMAN 31B-25-692 SURFACE



Local Event Log

1	START JOB	22:51:28	2	FILL LINES	22:51:58
3	PRESSURE TEST	22:52:55	4	H2O SPACER	22:56:00
5	LEAD CEMENT	23:02:31	6	TAIL CEMENT	23:13:28
7	SHUT DOWN	23:20:17	8	DROP PLUG	23:23:45
9	START DISPLACEMENT	23:24:20	10	SLOW RATE	23:32:08
11	BUMP PLUG	23:35:19	12	CHECK FLOATS	23:36:27
13	END JOB	23:37:10			

HALLIBURTON

Water Analysis Report

Company: BILL BARRETT

Submitted by: MARK PHILLIPS

Attention: LAB

Lease KAUFMAN

Well # 31B-25-692

Date: 12/10/2011

Date Rec.: 12/10/2011

S.O.# 9112141

Job Type: SURFACE

Specific Gravity	MAX	MAX
pH	8	-
Potassium (K)	5000	500 Mg / L
Calcium (Ca)	500	200 Mg / L
Iron (FE2)	300	0 Mg / L
Chlorides (Cl)	3000	250 Mg / L
Sulfates (SO ₄)	1500	200 Mg / L
Chlorine (Cl ₂)		0 Mg / L
Temp	40-80	41 Deg
Total Dissolved Solids		950 Mg / L

Respectfully: MARK PHILLIPS

Title: CEMENTING SUPERVISOR

Location: Grand Junction, CO

NOTICE:

This report is limited to the described sample tested. Any person using or relying on this report agrees that Halliburton shall not be liable for any loss or damage whether due to act or omission resulting from such report or its

HALLIBURTON

CUSTOMER SURVEY

Sales Order #:	Line Item:	Survey Conducted Date:
9112141	10	12/11/2011
Customer:		Job Type (BOM):
BILL BARRETT CORPORATION E-BILL		CMT SURFACE CASING BOM
Customer Representative:		API / UWI: (leave blank if unknown)
CASEY LAUER		05-045-21139
Well Name:		Well Number:
KAUFMAN		31B-25-692
Well Type:	Well Country:	
Development Well	United States of America	
H2S Present:	Well State:	Well County:
No	Colorado	Garfield

Dear Customer,

We hope that you were satisfied with the service quality of this job performed by Halliburton. It is the aim of our management and service personnel to deliver equipment and service of a standard unmatched in the service sector of the energy industry.

Please take the time to let us know if our performance met with your satisfaction. Please be as critical as possible to ensure we constantly improve our service. Your comments are of great value to us and are intended for the exclusive use of Halliburton.

CUSTOMER SATISFACTION SURVEY

CATEGORY	CUSTOMER SATISFACTION RESPONSE
Survey Conducted Date	The date the survey was conducted 12/11/2011
Survey Interviewer	The survey interviewer is the person who initiated the survey. MARK PHILLIPS (H813261)
Customer Participation	Did the customer participate in this survey? (Y/N) Yes
Customer Representative	Enter the Customer representative name CASEY LAUER
HSE	Was our HSE performance satisfactory? Circle Y or N Yes
Equipment	Were you satisfied with our Equipment? Circle Y or N Yes
Personnel	Were you satisfied with our people? Circle Y or N Yes
Customer Comment	Customer's Comment

CUSTOMER SIGNATURE

HALLIBURTON

CUSTOMER SURVEY

Sales Order #:

9112141

Line Item:

10

Survey Conducted Date:

12/11/2011

Customer:

BILL BARRETT CORPORATION E-BILL

Job Type (BOM):

CMT SURFACE CASING BOM

Customer Representative:

CASEY LAUER

API / UWI: (leave blank if unknown)

05-045-21139

Well Name:

KAUFMAN

Well Number:

31B-25-692

Well Type:

Development Well

Well Country:

United States of America

H2S Present:

No

Well State:

Colorado

Well County:

Garfield

KEY PERFORMANCE INDICATORS

General

Survey Conducted Date

12/11/2011

The date the survey was conducted

Cementing KPI Survey

Type of Job

0

Select the type of job. (Cementing or Non-Cementing)

Select the Maximum Deviation range for this Job

Vertical

What is the highest deviation for the job you just completed? This may not be the maximum well deviation.

Total Operating Time (hours)

2

Total Operating Hours Including Rig-up, Pumping, Rig-down. Enter in decimal format.

HSE Incident, Accident, Injury

No

HSE Incident, Accident, Injury. This should be recordable incidents only.

Was the job purpose achieved?

Yes

Was the job delivered correctly as per customer agreed design?

Operating Hours (Pumping Hours)

1

Total number of hours pumping fluid on this job. Enter in decimal format.

Customer Non-Productive Rig Time (hrs)

0

Lost time due to Halliburton in the start, execution, or completion of an ordered service or product, or delays in a follow-on service. Enter in decimal format. 0 if none.

Type of Rig Classification Job Was Performed

Drilling Rig (Portable)

Type Of Rig (classification) Job Was Performed On

Number Of JSAs Performed

6

Number Of Jsas Performed

Number of Unplanned Shutdowns

0

Unplanned shutdown is when injection stops for any period of time.

Was this a Primary Cement Job (Yes / No)

Yes

KPI Number: HBCK66020111203154349K301

EJCS Number: HBCK66020111203154349E301

HALLIBURTON

CUSTOMER SURVEY

Sales Order #:	Line Item:	Survey Conducted Date:
9112141	10	12/11/2011
Customer:		Job Type (BOM):
BILL BARRETT CORPORATION E-BILL		CMT SURFACE CASING BOM
Customer Representative:		API / UWI: (leave blank if unknown)
CASEY LAUER		05-045-21139
Well Name:		Well Number:
KAUFMAN		31B-25-692
Well Type:	Well Country:	
Development Well	United States of America	
H2S Present:	Well State:	Well County:
No	Colorado	Garfield

Primary Cement Job= Casing job, Liner job, or Tie back job.

Did We Run Wiper Plugs? Top

Did We Run Top And Bottom Casing Wiper Plugs?

Mixing Density of Job Stayed in Designed Density Range (0-100%) 95

Density Range defined as +/- .20 ppg. Calculation: Total BBLs cement mixed at designed density divided by total BBLs of cement multiplied by 100

Was Automated Density Control Used? Yes

Was Automated Density Control (ADC) Used ?

Pump Rate (percent) of Job Stayed At Designed Pump Rate 95

Pump Rate range defined as +/- 1bbl/min. Calculation: Total BBLs of fluid pumped at the designed rate divided by Total BBLs of fluid pumped, multiplied by 100

Nbr of Remedial Sqz Jobs Rqd - Competition 0

Number Of Remedial Squeeze Jobs Required After Primary Job Performed By Competition

Nbr of Remedial Plug Jobs Rqd - HES 0

Number Of Remedial Plug Jobs Needed After Primary Plug Pumped By HES

Nbr of Remedial Sqz Jobs Rqd - HES 0

Number Of Remedial Squeeze Jobs Required After Primary Job Performed By HES