

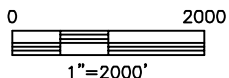
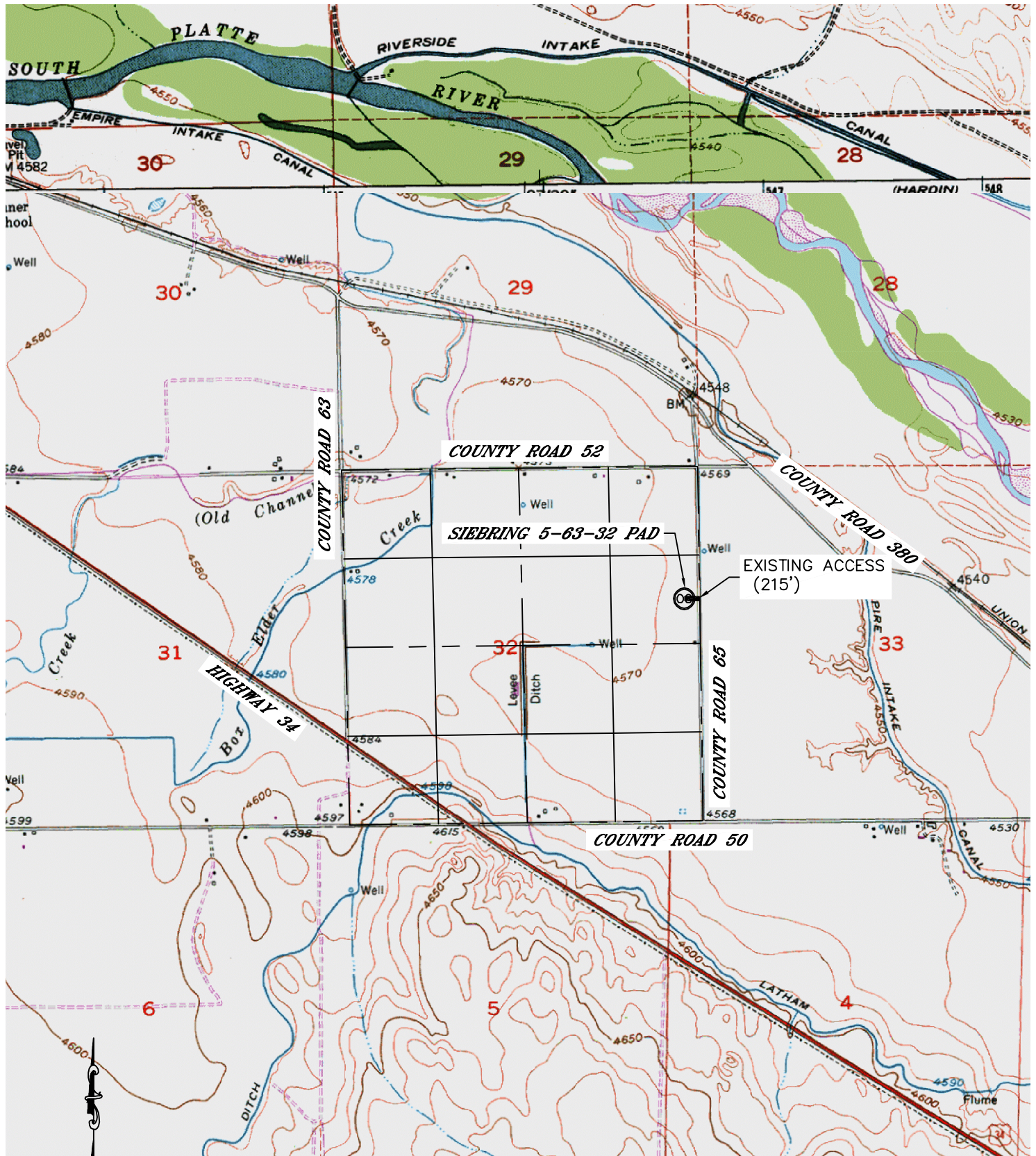


Lat40°, Inc. 1635 Foxtrail Drive, Suite 325 Loveland, CO 970-776-3321

ACCESS ROAD MAP

SIEBRING 5-63-32-16H, 17H, 32H, 48H

SECTION: 32
TOWNSHIP: 5N
RANGE: 63W



DIRECTIONS:
FROM THE INTERSECTION OF HIGHWAY 34 AND COUNTY ROAD 50, GO EAST ON COUNTY ROAD 50
0.7 MILE TO COUNTY ROAD 65, THEN NORTH ON COUNTY ROAD 65 0.6 MILE TO AND EXISTING
ACCESS, THEN WEST 215' TO THE LOCATION.

DATE: 1/26/12
PROJECT#: 2011312