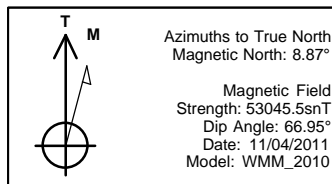


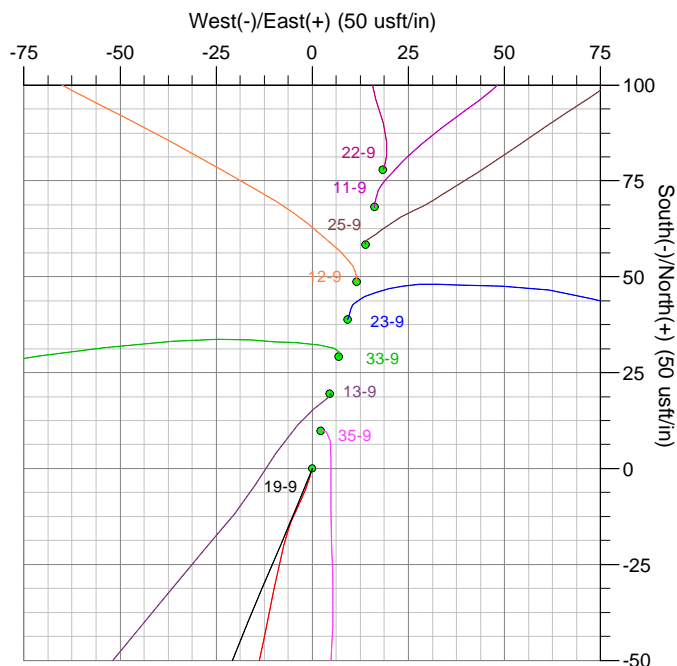
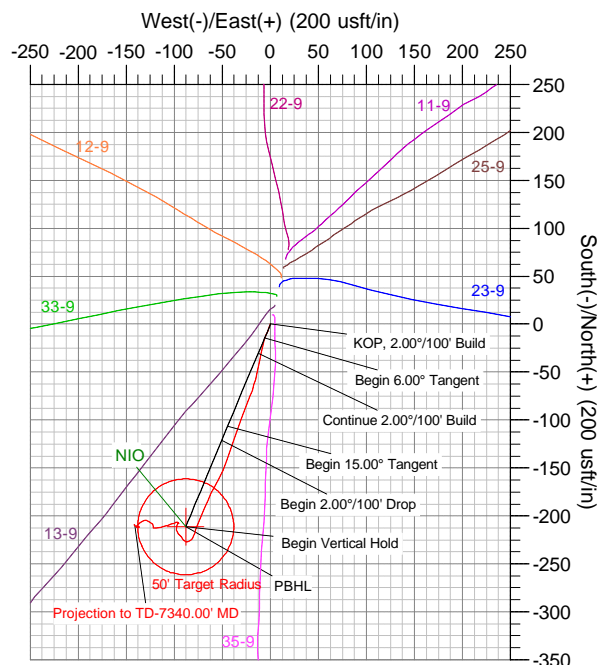
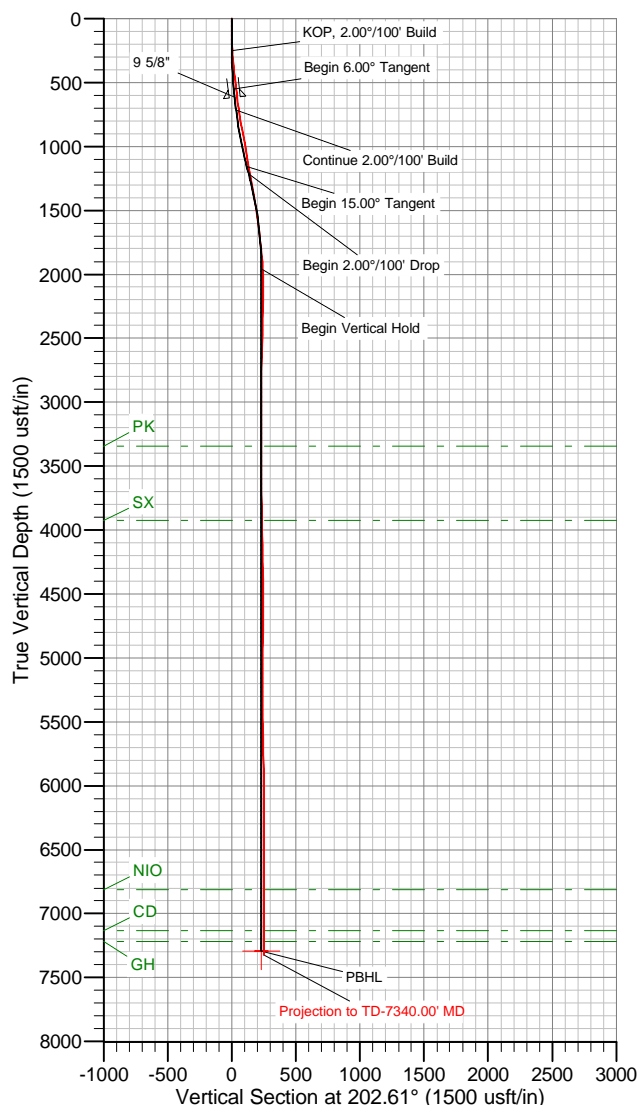
ANNOTATIONS

MD	Inc	Azi	TVD	+N/-S	+E/-W	Vsect	Departure	Annotation
250.00	0.00	0.00	250.00	0.00	0.00	0.00	0.00	KOP, 2.00°/100' Build
550.00	6.00	202.61	549.45	-14.49	-6.03	15.69	15.69	Begin 6.00° Tangent
716.46	6.00	202.61	715.00	-30.55	-12.72	33.09	33.09	Continue 2.00°/100' Build
1166.43	15.00	202.61	1156.98	-106.17	-44.21	115.01	115.01	Begin 15.00° Tangent
1229.10	15.00	202.61	1217.52	-121.14	-50.45	131.23	131.23	Begin 2.00°/100' Drop
1979.07	0.00	0.00	1958.95	-211.25	-87.97	228.83	228.83	Begin Vertical Hold
7315.12	0.00	0.00	7295.00	-211.25	-87.97	228.83	228.83	PBHL



US State Plane 1983
Colorado Northern Zone

Created By: Megan Pope
Date: 11:24, November 07 2011
Plan: Design #1



The customer should only rely on this document after independently verifying all paths, targets, coordinates, lease and hard lines represented. Any decisions made or wells drilled utilizing this or any other information supplied by MS Energy are at the sole risk and responsibility of the customer. MS Energy is not responsible for the accuracy of this schematic or the information contained herein.



Anadarko

Weld County, Colorado (NAD83)

Johnstown Farms

19-9

Wellbore #1

Survey: MS MWD

Standard Survey Report

07 November, 2011

Company:	Anadarko	Local Co-ordinate Reference:	Well 19-9
Project:	Weld County, Colorado (NAD83)	TVD Reference:	WELL @ 4795.00usft (Xtreme 11)
Site:	Johnstown Farms	MD Reference:	WELL @ 4795.00usft (Xtreme 11)
Well:	19-9	North Reference:	True
Wellbore:	Wellbore #1	Survey Calculation Method:	Minimum Curvature
Design:	Surveys	Database:	Southern Region

Project	Weld County, Colorado (NAD83)		
Map System:	US State Plane 1983	System Datum:	Mean Sea Level
Geo Datum:	North American Datum 1983		
Map Zone:	Colorado Northern Zone		

Well	19-9				
Well Position	+N/-S	0.00 usft	Northing:	1,361,528.93 usft	Latitude: 40° 19' 27.2967 N
	+E/-W	0.00 usft	Easting:	3,167,020.50 usft	Longitude: 104° 54' 3.501 W
Position Uncertainty		0.00 usft	Wellhead Elevation:	usft	Ground Level: 4,780.00 usft

Wellbore	Wellbore #1				
Magnetics	Model Name	Sample Date	Declination (°)	Dip Angle (°)	Field Strength (nT)
	WMM_2010	11/04/11	8.87	66.95	53,045

Design	Surveys				
Audit Notes:					
Version:	1.0	Phase:	ACTUAL	Tie On Depth:	0.00
Vertical Section:	Depth From (TVD) (usft)	+N/-S (usft)	+E/-W (usft)	Direction (°)	
	0.00	0.00	0.00		202.61

Survey Program	Date	11/07/11			
From (usft)	To (usft)	Survey (Wellbore)	Tool Name	Description	
104.00	7,340.00	MS MWD (Wellbore #1)	MWD	MWD - Standard	

Survey										
Measured Depth (usft)	Inclination (°)	Azimuth (°)	Vertical Depth (usft)	+N/-S (usft)	+E/-W (usft)	Vertical Section (usft)	Dogleg Rate (°/100usft)	Build Rate (°/100usft)	Turn Rate (°/100usft)	
0.00	0.00	0.00	0.00	0.00	0.00	0.00	0.00	0.00	0.00	
104.00	0.30	198.40	104.00	-0.26	-0.09	0.27	0.29	0.29	0.00	
193.00	1.50	193.50	192.99	-1.61	-0.43	1.65	1.35	1.35	-5.51	
283.00	3.30	200.70	282.90	-5.18	-1.62	5.41	2.02	2.00	8.00	
373.00	5.00	206.10	372.67	-11.13	-4.26	11.91	1.94	1.89	6.00	
464.00	7.20	194.70	463.15	-20.21	-7.46	21.52	2.75	2.42	-12.53	
555.00	7.20	190.30	553.43	-31.33	-9.92	32.74	0.61	0.00	-4.84	
589.00	7.20	191.20	587.16	-35.52	-10.72	36.91	0.33	0.00	2.65	
663.00	7.40	191.50	660.56	-44.74	-12.57	46.13	0.28	0.27	0.41	
755.00	9.00	192.90	751.62	-57.56	-15.36	59.04	1.75	1.74	1.52	
863.00	10.50	202.40	858.06	-74.89	-20.99	77.21	2.03	1.39	8.80	
999.00	10.50	200.30	991.79	-97.97	-30.01	101.98	0.28	0.00	-1.54	
1,135.00	9.70	197.00	1,125.68	-120.55	-37.66	125.77	0.73	-0.59	-2.43	
1,271.00	9.40	200.50	1,259.80	-141.91	-44.90	148.27	0.48	-0.22	2.57	
1,407.00	10.40	208.70	1,393.78	-163.08	-54.69	171.57	1.27	0.74	6.03	

Company:	Anadarko	Local Co-ordinate Reference:	Well 19-9
Project:	Weld County, Colorado (NAD83)	TVD Reference:	WELL @ 4795.00usft (Xtreme 11)
Site:	Johnstown Farms	MD Reference:	WELL @ 4795.00usft (Xtreme 11)
Well:	19-9	North Reference:	True
Wellbore:	Wellbore #1	Survey Calculation Method:	Minimum Curvature
Design:	Surveys	Database:	Southern Region

Survey										
Measured Depth (usft)	Inclination (°)	Azimuth (°)	Vertical Depth (usft)	+N/-S (usft)	+E/-W (usft)	Vertical Section (usft)	Dogleg Rate (°/100usft)	Build Rate (°/100usft)	Turn Rate (°/100usft)	
1,543.00	8.40	203.50	1,527.94	-182.96	-64.54	193.72	1.60	-1.47	-3.82	
1,680.00	7.20	204.70	1,663.67	-199.94	-72.12	212.30	0.88	-0.88	0.88	
1,816.00	5.90	194.90	1,798.79	-214.44	-77.48	227.75	1.26	-0.96	-7.21	
1,952.00	3.60	222.10	1,934.33	-224.36	-82.14	238.70	2.32	-1.69	20.00	
2,088.00	2.00	285.60	2,070.19	-226.89	-87.29	243.02	2.39	-1.18	46.69	
2,224.00	1.40	327.40	2,206.13	-224.86	-90.47	242.36	0.98	-0.44	30.74	
2,361.00	1.60	324.90	2,343.09	-221.88	-92.47	240.38	0.15	0.15	-1.82	
2,497.00	2.40	307.20	2,479.00	-218.61	-95.83	238.65	0.74	0.59	-13.01	
2,633.00	1.80	12.00	2,614.93	-214.80	-97.66	235.83	1.70	-0.44	47.65	
2,769.00	2.60	6.20	2,750.83	-209.64	-96.88	230.77	0.61	0.59	-4.26	
2,905.00	0.70	125.10	2,886.78	-207.05	-95.87	227.99	2.21	-1.40	87.43	
3,042.00	0.30	190.60	3,023.78	-207.88	-95.25	228.53	0.46	-0.29	47.81	
3,178.00	0.80	341.10	3,159.78	-207.34	-95.62	228.16	0.79	0.37	110.66	
3,314.00	0.60	274.50	3,295.77	-206.38	-96.64	227.67	0.58	-0.15	-48.97	
3,450.00	0.70	248.30	3,431.76	-206.63	-98.12	228.48	0.23	0.07	-19.26	
3,586.00	0.70	234.90	3,567.75	-207.42	-99.57	229.76	0.12	0.00	-9.85	
3,723.00	0.90	255.90	3,704.74	-208.16	-101.30	231.11	0.26	0.15	15.33	
3,859.00	1.10	260.80	3,840.72	-208.63	-103.63	232.44	0.16	0.15	3.60	
3,995.00	1.50	249.30	3,976.68	-209.47	-106.58	234.34	0.35	0.29	-8.46	
4,132.00	1.40	252.00	4,113.64	-210.62	-109.85	236.66	0.09	-0.07	1.97	
4,268.00	1.80	262.00	4,249.58	-211.43	-113.54	238.83	0.36	0.29	7.35	
4,404.00	2.40	258.30	4,385.49	-212.30	-118.45	241.53	0.45	0.44	-2.72	
4,540.00	0.30	317.00	4,521.45	-212.62	-121.48	242.98	1.66	-1.54	43.16	
4,677.00	0.50	10.60	4,658.45	-211.77	-121.61	242.25	0.29	0.15	39.12	
4,813.00	0.70	341.60	4,794.44	-210.40	-121.77	241.04	0.26	0.15	-21.32	
4,949.00	0.90	319.70	4,930.43	-208.80	-122.72	239.93	0.27	0.15	-16.10	
5,085.00	1.00	308.80	5,066.41	-207.24	-124.34	239.11	0.15	0.07	-8.01	
5,222.00	1.20	297.90	5,203.38	-205.82	-126.54	238.65	0.21	0.15	-7.96	
5,358.00	1.20	289.10	5,339.35	-204.69	-129.14	238.60	0.14	0.00	-6.47	
5,494.00	1.80	240.60	5,475.31	-205.27	-132.35	240.37	0.99	0.44	-35.66	
5,631.00	1.20	237.40	5,612.26	-207.10	-135.43	243.25	0.44	-0.44	-2.34	
5,767.00	1.00	220.20	5,748.24	-208.77	-137.40	245.55	0.28	-0.15	-12.65	
5,903.00	1.10	229.10	5,884.21	-210.53	-139.15	247.85	0.14	0.07	6.54	
6,039.00	1.10	99.60	6,020.20	-211.60	-138.85	248.72	1.46	0.00	-95.22	
6,175.00	0.40	91.70	6,156.19	-211.84	-137.09	248.26	0.52	-0.51	-5.81	
6,312.00	0.30	47.60	6,293.19	-211.61	-136.34	247.76	0.20	-0.07	-32.19	
6,447.00	0.40	275.70	6,428.19	-211.32	-136.55	247.58	0.47	0.07	-97.70	
6,583.00	0.50	276.90	6,564.18	-211.21	-137.61	247.88	0.07	0.07	0.88	
6,719.00	0.60	287.30	6,700.18	-210.92	-138.88	248.11	0.10	0.07	7.65	
6,855.00	0.60	291.00	6,836.17	-210.46	-140.23	248.19	0.03	0.00	2.72	
6,992.00	0.40	321.40	6,973.16	-209.82	-141.19	247.98	0.24	-0.15	22.19	
7,128.00	0.20	10.10	7,109.16	-209.22	-141.45	247.52	0.23	-0.15	35.81	
7,264.00	0.10	28.00	7,245.16	-208.88	-141.35	247.17	0.08	-0.07	13.16	
7,295.00	0.02	153.20	7,276.16	-208.86	-141.34	247.15	0.36	-0.26	403.87	

Company:	Anadarko	Local Co-ordinate Reference:	Well 19-9
Project:	Weld County, Colorado (NAD83)	TVD Reference:	WELL @ 4795.00usft (Xtreme 11)
Site:	Johnstown Farms	MD Reference:	WELL @ 4795.00usft (Xtreme 11)
Well:	19-9	North Reference:	True
Wellbore:	Wellbore #1	Survey Calculation Method:	Minimum Curvature
Design:	Surveys	Database:	Southern Region

Survey									
Measured Depth (usft)	Inclination (°)	Azimuth (°)	Vertical Depth (usft)	+N/-S (usft)	+E/-W (usft)	Vertical Section (usft)	Dogleg Rate (°/100usft)	Build Rate (°/100usft)	Turn Rate (°/100usft)
7,340.00	0.20	153.20	7,321.16	-208.94	-141.30	247.20	0.40	0.40	0.00
Projection to TD-7340.00' MD									

Survey Annotations				
Measured Depth (usft)	Vertical Depth (usft)	Local Coordinates		Comment
		+N/-S (usft)	+E/-W (usft)	
7,340.00	7,321.16	-208.94	-141.30	Projection to TD-7340.00' MD