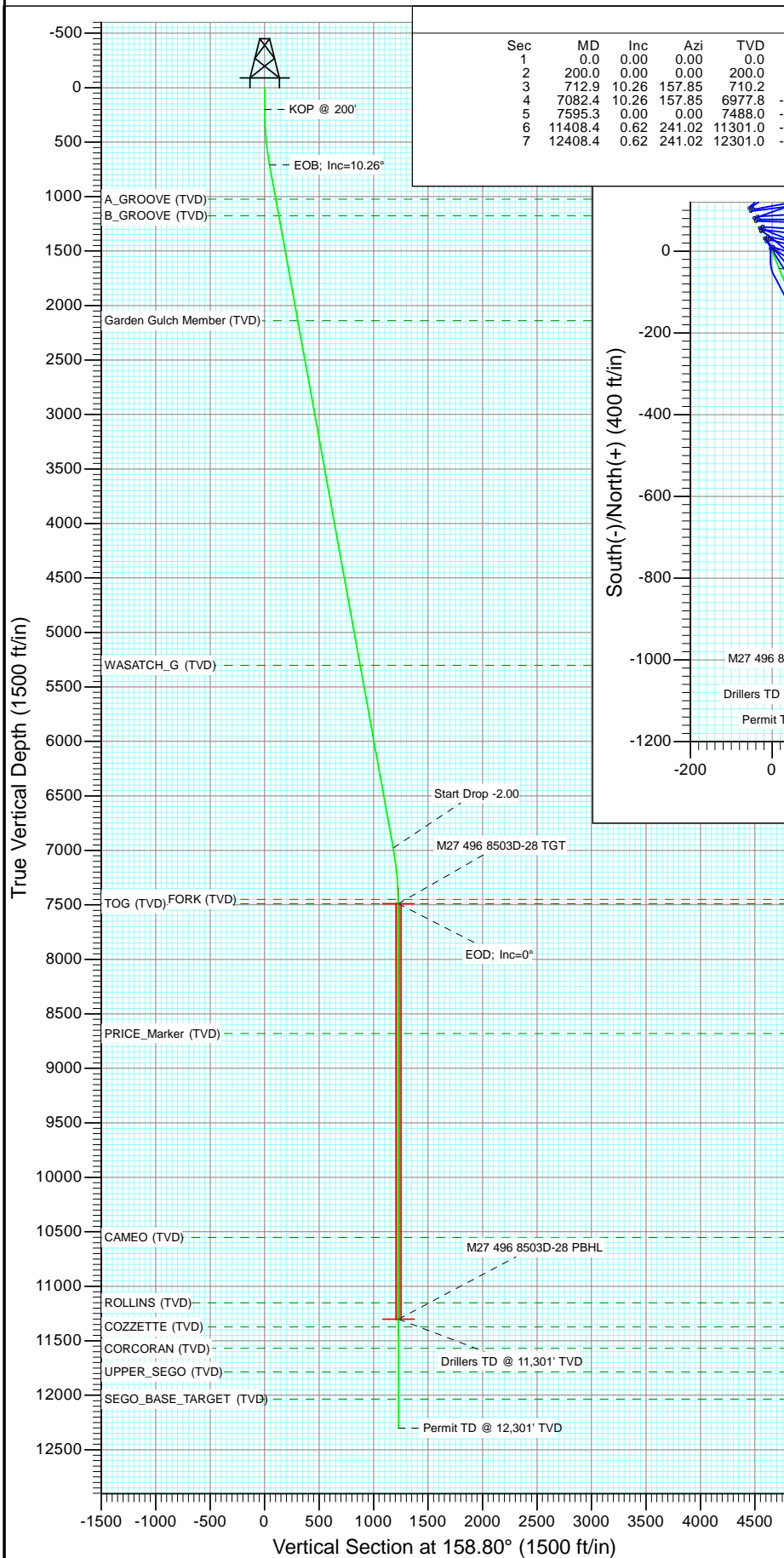


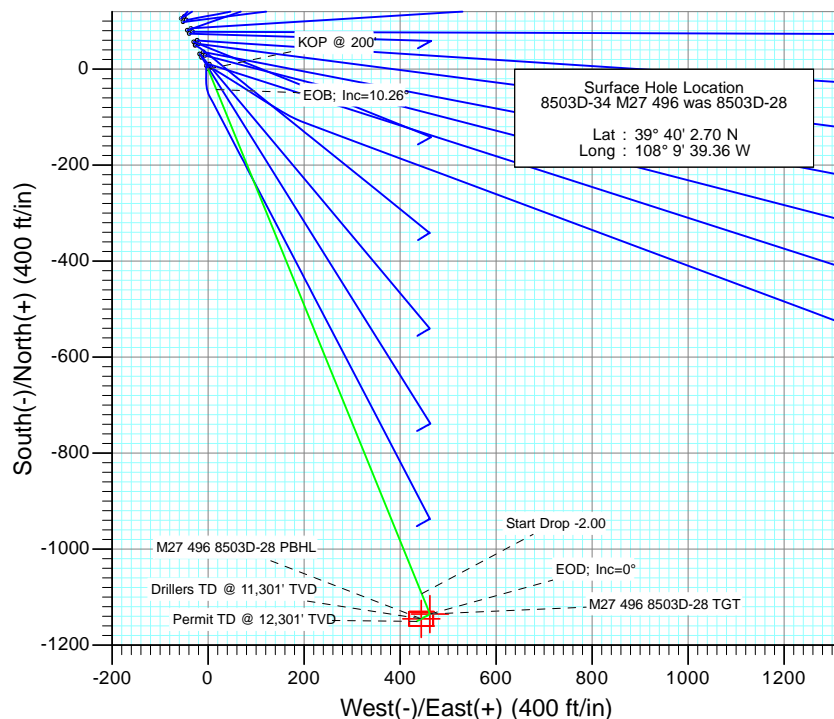


Project: Story Gulch
Site: S27-T4S-R96W (M27 496)
Well: 8503D-34 M27 496 was 8503D-28
Wellbore: DD
Design: Plan #2



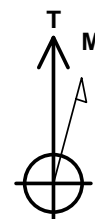
SECTION DETAILS

Sec	MD	Inc	Azi	TVD	+N/-S	+E/-W	Dleg	TFace	Vsect	Target
1	0.0	0.00	0.00	0.0	0.0	0.0	0.00	0.00	0.0	
2	200.0	0.00	0.00	200.0	0.0	0.0	0.00	0.00	0.0	
3	712.9	10.26	157.85	710.2	-42.4	17.3	2.00	157.85	45.8	
4	7082.4	10.26	157.85	6977.8	-1093.0	444.9	0.00	0.00	1179.9	
5	7595.3	0.00	0.00	7488.0	-1135.4	462.2	2.00	180.00	1225.7	M27 496 8503D-28 TGT
6	11408.4	0.62	241.02	11301.0	-1145.4	444.2	0.02	241.02	1228.5	M27 496 8503D-28 PBHL
7	12408.4	0.62	241.02	12301.0	-1150.6	434.7	0.00	0.00	1229.9	



FORMATION TOP DETAILS

TVDPath	MDPath	Formation
1023.0	1030.8	A_GROOVE (TVD)
1176.0	1186.3	B_GROOVE (TVD)
2138.0	2163.9	Garden Gulch Member (TVD)
5302.0	5379.3	WASATCH_G (TVD)
7448.0	7555.3	WILLIAMS_FORK (TVD)
7488.0	7595.3	TOG (TVD)
8679.0	8786.3	PRICE_Marker (TVD)
10551.0	10658.3	CAMEO (TVD)
11151.0	11258.3	ROLLINS (TVD)
11372.0	11479.4	COZZETTE (TVD)
11568.0	11675.4	CORCORAN (TVD)
11785.0	11892.4	UPPER_SEGO (TVD)
12035.0	12142.4	SEGO_BASE_TARGET (TVD)



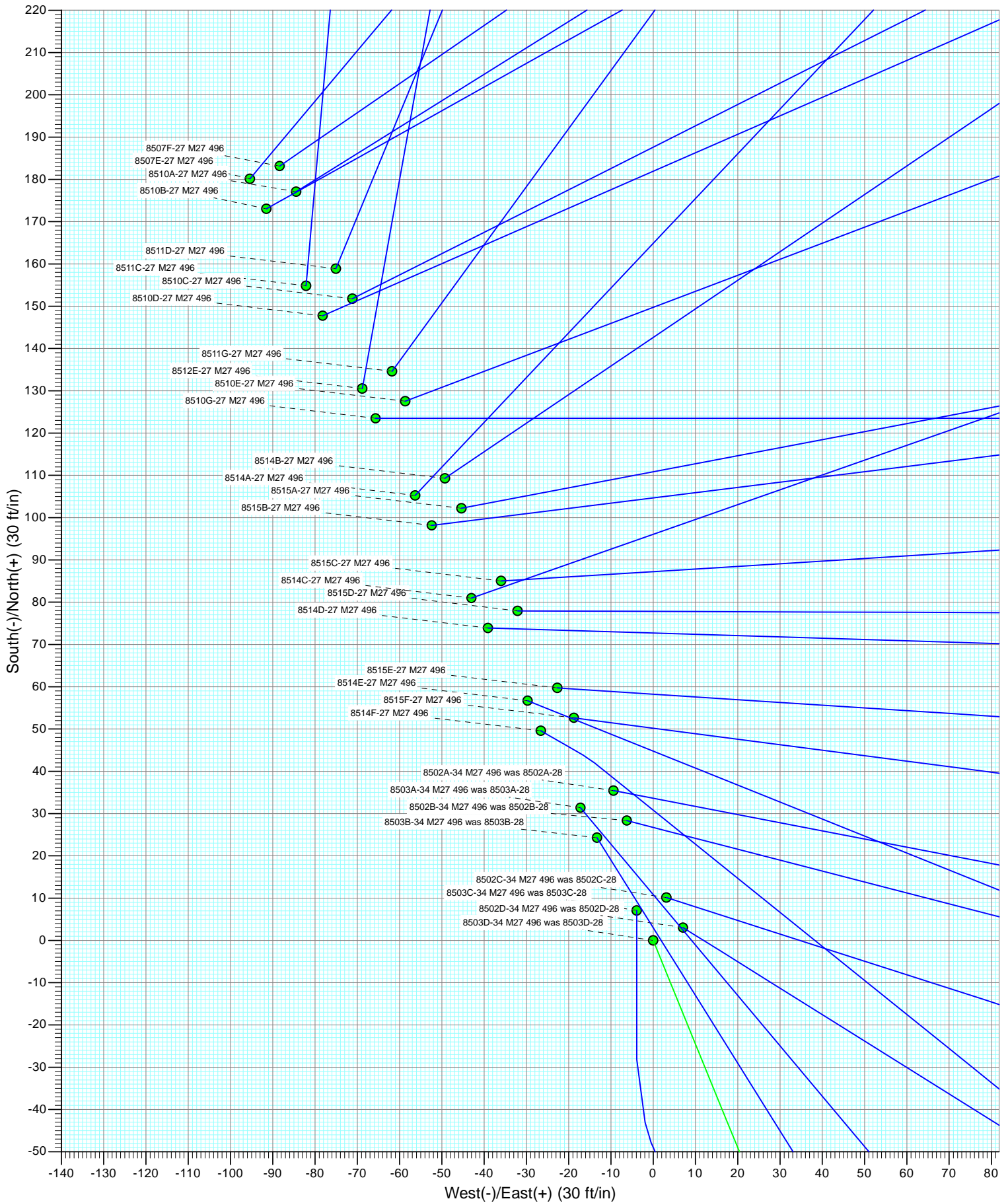
Azimuths to True North
Magnetic North: 10.41°

Magnetic Field
Strength: 52277.5snT
Dip Angle: 65.84°
Date: 9/21/2011
Model: IGRF2010

Plan #2									
8503D-34 M27 496 was 8503D-28									
11500: LR									
KBE @ 8121.0ft (Original Well Elev)									
GL @ 8099.0									
North American Datum 1983									
Well 8503D-34 M27 496 was 8503D-28, True North									
Type	Target	Azimuth	Origin Type	N/S	E/W	From TVD			
Name	Target	TVD	+N/-S	+E/-W	Latitude	Longitude			
M27 496 8503D-28 TGT		7488.0	-1135.4	462.2	39° 39' 51.48 N	108° 9' 33.45 W			
M27 496 8503D-28 PBHL		11301.0	-1145.4	444.2	39° 39' 51.38 N	108° 9' 33.68 W			

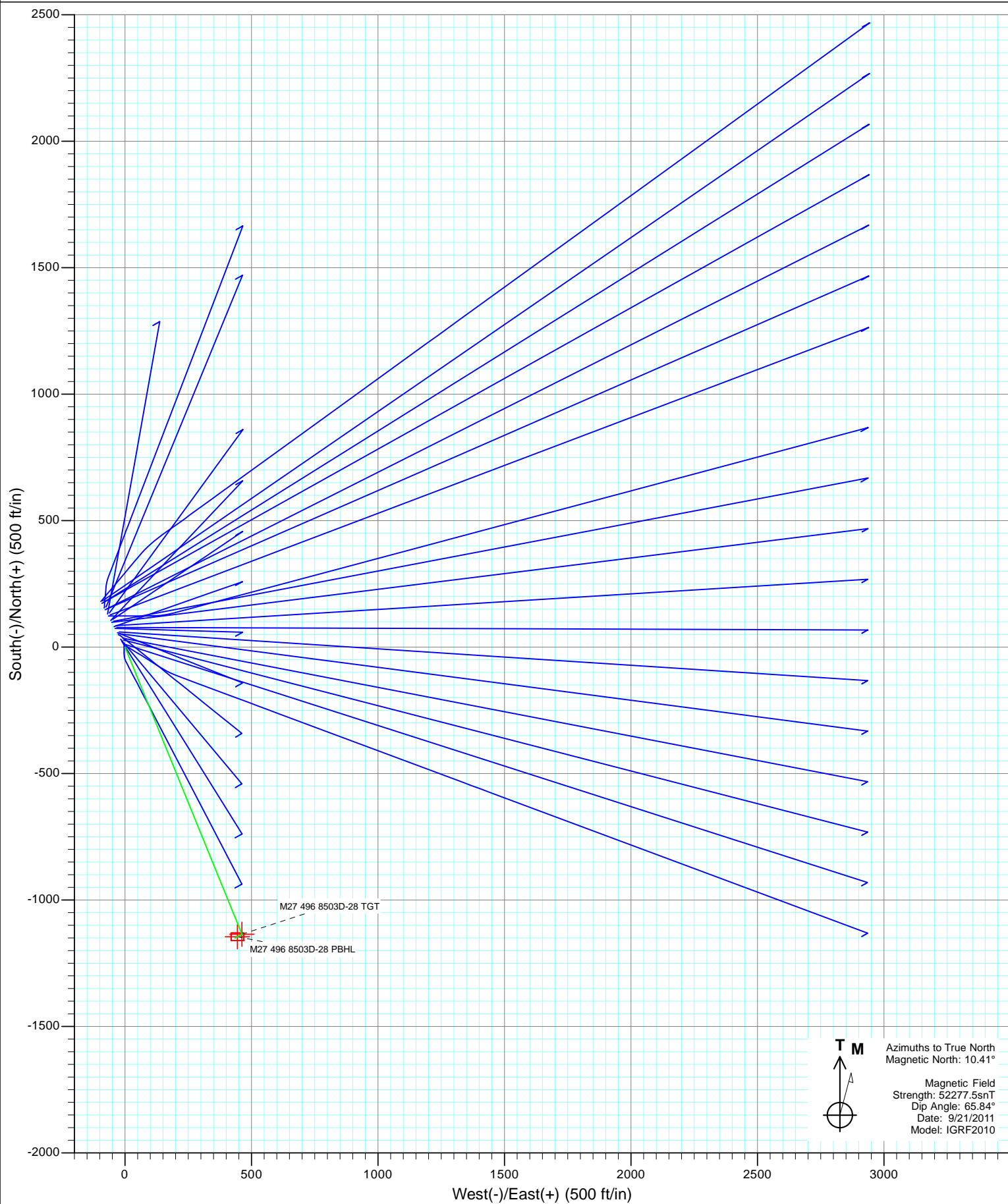


Project: Story Gulch
Site: S27-T4S-R96W (M27 496)
Well: 8503D-34 M27 496 was 8503D-28
Wellbore: DD
Design: Plan #2



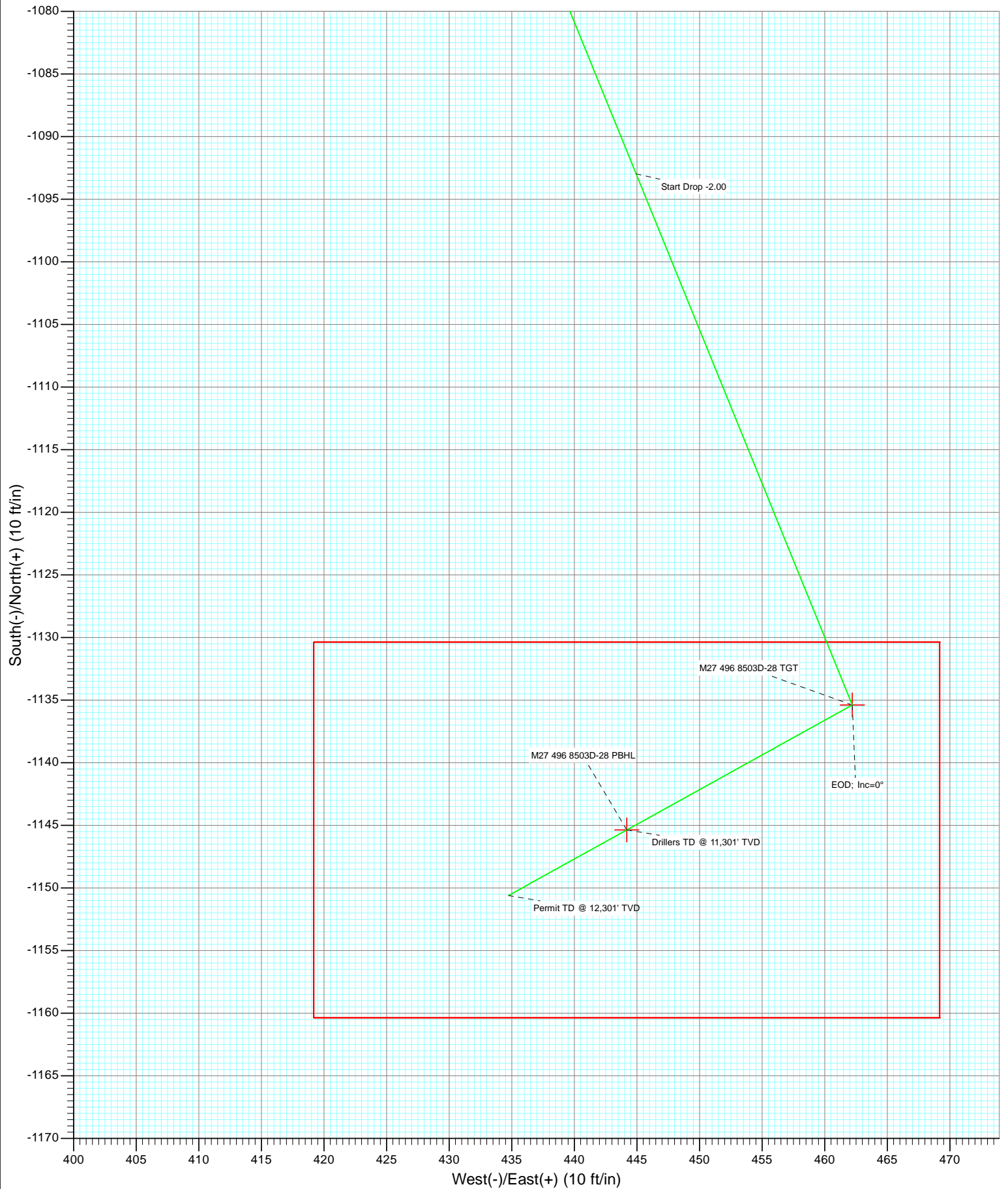


Project: Story Gulch
Site: S27-T4S-R96W (M27 496)
Well: 8503D-34 M27 496 was 8503D-28
Wellbore: DD
Design: Plan #2





Project: Story Gulch
Site: S27-T4S-R96W (M27 496)
Well: 8503D-34 M27 496 was 8503D-28
Wellbore: DD
Design: Plan #2



Cathedral Energy Services

Planning Report

Database:	USA EDM 5000 Multi Users DB	Local Co-ordinate Reference:	Well 8503D-34 M27 496 was 8503D-28
Company:	EnCana Oil & Gas (USA) Inc	TVD Reference:	KBE @ 8121.0ft (Original Well Elev)
Project:	Story Gulch	MD Reference:	KBE @ 8121.0ft (Original Well Elev)
Site:	S27-T4S-R96W (M27 496)	North Reference:	True
Well:	8503D-34 M27 496 was 8503D-28	Survey Calculation Method:	Minimum Curvature
Wellbore:	DD		
Design:	Plan #2		

Project	Story Gulch		
Map System:	US State Plane 1983	System Datum:	Mean Sea Level
Geo Datum:	North American Datum 1983		
Map Zone:	Colorado Central Zone		

Site		S27-T4S-R96W (M27 496)			
Site Position:		Northing:	1,678,990.24 ft	Latitude:	39° 40' 3.01 N
From:	Lat/Long	Easting:	2,251,008.33 ft	Longitude:	108° 9' 39.57 W
Position Uncertainty:	0.0 ft	Slot Radius:	13.200 in	Grid Convergence:	-1.68 °

Well	8503D-34 M27 496 was 8503D-28					
Well Position	+N/-S	0.0 ft	Northing:	1,678,958.38 ft	Latitude:	39° 40' 2.70 N
	+E/-W	0.0 ft	Easting:	2,251,023.82 ft	Longitude:	108° 9' 39.36 W
Position Uncertainty		0.0 ft	Wellhead Elevation:	ft	Ground Level:	8,099.0 ft

Wellbore	DD				
Magnetics	Model Name	Sample Date	Declination (°)	Dip Angle (°)	Field Strength (nT)
	IGRF2010	9/21/2011	10.41	65.84	52,278

Design	Plan #2			
Audit Notes:				
Version:	Phase:	PLAN	Tie On Depth:	0.0
Vertical Section:	Depth From (TVD) (ft)	+N/-S (ft)	+E/-W (ft)	Direction (°)
	0.0	0.0	0.0	158.80

Plan Sections										
Measured Depth (ft)	Inclination (°)	Azimuth (°)	Vertical Depth (ft)	+N/-S (ft)	+E/-W (ft)	Dogleg Rate (°/100ft)	Build Rate (°/100ft)	Turn Rate (°/100ft)	TFO (°)	Target
0.0	0.00	0.00	0.0	0.0	0.0	0.00	0.00	0.00	0.00	
200.0	0.00	0.00	200.0	0.0	0.0	0.00	0.00	0.00	0.00	
712.9	10.26	157.85	710.2	-42.4	17.3	2.00	2.00	0.00	157.85	
7,082.4	10.26	157.85	6,977.8	-1,093.0	444.9	0.00	0.00	0.00	0.00	
7,595.3	0.00	0.00	7,488.0	-1,135.4	462.2	2.00	-2.00	0.00	180.00	M27 496 8503D-28 T
11,408.4	0.62	241.02	11,301.0	-1,145.4	444.2	0.02	0.02	-3.12	241.02	M27 496 8503D-28 P
12,408.4	0.62	241.02	12,301.0	-1,150.6	434.7	0.00	0.00	0.00	0.00	

Cathedral Energy Services

Planning Report

Database:	USA EDM 5000 Multi Users DB	Local Co-ordinate Reference:	Well 8503D-34 M27 496 was 8503D-28
Company:	EnCana Oil & Gas (USA) Inc	TVD Reference:	KBE @ 8121.0ft (Original Well Elev)
Project:	Story Gulch	MD Reference:	KBE @ 8121.0ft (Original Well Elev)
Site:	S27-T4S-R96W (M27 496)	North Reference:	True
Well:	8503D-34 M27 496 was 8503D-28	Survey Calculation Method:	Minimum Curvature
Wellbore:	DD		
Design:	Plan #2		

Planned Survey

Measured Depth (ft)	Inclination (°)	Azimuth (°)	Vertical Depth (ft)	+N/-S (ft)	+E/-W (ft)	Vertical Section (ft)	Dogleg Rate (°/100ft)	Build Rate (°/100ft)	Comments / Formations
0.0	0.00	0.00	0.0	0.0	0.0	0.0	0.00	0.00	
100.0	0.00	0.00	100.0	0.0	0.0	0.0	0.00	0.00	
200.0	0.00	0.00	200.0	0.0	0.0	0.0	0.00	0.00	KOP @ 200'
300.0	2.00	157.85	300.0	-1.6	0.7	1.7	2.00	2.00	
400.0	4.00	157.85	399.8	-6.5	2.6	7.0	2.00	2.00	
500.0	6.00	157.85	499.5	-14.5	5.9	15.7	2.00	2.00	
600.0	8.00	157.85	598.7	-25.8	10.5	27.9	2.00	2.00	
700.0	10.00	157.85	697.5	-40.3	16.4	43.5	2.00	2.00	
712.9	10.26	157.85	710.2	-42.4	17.3	45.8	2.00	2.00	EOB; Inc=10.26°
800.0	10.26	157.85	795.9	-56.8	23.1	61.3	0.00	0.00	
900.0	10.26	157.85	894.3	-73.3	29.8	79.1	0.00	0.00	
1,000.0	10.26	157.85	992.7	-89.8	36.5	96.9	0.00	0.00	
1,030.8	10.26	157.85	1,023.0	-94.8	38.6	102.4	0.00	0.00	A_GROOVE (TVD)
1,100.0	10.26	157.85	1,091.1	-106.3	43.3	114.7	0.00	0.00	
1,186.3	10.26	157.85	1,176.0	-120.5	49.1	130.1	0.00	0.00	B_GROOVE (TVD)
1,200.0	10.26	157.85	1,189.5	-122.8	50.0	132.5	0.00	0.00	
1,300.0	10.26	157.85	1,287.9	-139.2	56.7	150.3	0.00	0.00	
1,400.0	10.26	157.85	1,386.3	-155.7	63.4	168.1	0.00	0.00	
1,500.0	10.26	157.85	1,484.7	-172.2	70.1	185.9	0.00	0.00	
1,600.0	10.26	157.85	1,583.1	-188.7	76.8	203.7	0.00	0.00	
1,700.0	10.26	157.85	1,681.5	-205.2	83.5	221.5	0.00	0.00	
1,800.0	10.26	157.85	1,779.9	-221.7	90.3	239.3	0.00	0.00	
1,900.0	10.26	157.85	1,878.3	-238.2	97.0	257.2	0.00	0.00	
2,000.0	10.26	157.85	1,976.7	-254.7	103.7	275.0	0.00	0.00	
2,100.0	10.26	157.85	2,075.1	-271.2	110.4	292.8	0.00	0.00	
2,163.9	10.26	157.85	2,138.0	-281.7	114.7	304.1	0.00	0.00	Garden Gulch Member (TVD)
2,200.0	10.26	157.85	2,173.5	-287.7	117.1	310.6	0.00	0.00	
2,300.0	10.26	157.85	2,271.9	-304.2	123.8	328.4	0.00	0.00	
2,400.0	10.26	157.85	2,370.3	-320.7	130.5	346.2	0.00	0.00	
2,500.0	10.26	157.85	2,468.7	-337.2	137.3	364.0	0.00	0.00	
2,600.0	10.26	157.85	2,567.1	-353.7	144.0	381.8	0.00	0.00	
2,700.0	10.26	157.85	2,665.5	-370.2	150.7	399.6	0.00	0.00	
2,800.0	10.26	157.85	2,763.9	-386.7	157.4	417.4	0.00	0.00	
2,900.0	10.26	157.85	2,862.3	-403.1	164.1	435.2	0.00	0.00	
3,000.0	10.26	157.85	2,960.7	-419.6	170.8	453.0	0.00	0.00	
3,100.0	10.26	157.85	3,059.1	-436.1	177.5	470.8	0.00	0.00	
3,200.0	10.26	157.85	3,157.5	-452.6	184.3	488.6	0.00	0.00	
3,300.0	10.26	157.85	3,255.9	-469.1	191.0	506.4	0.00	0.00	
3,400.0	10.26	157.85	3,354.3	-485.6	197.7	524.2	0.00	0.00	
3,500.0	10.26	157.85	3,452.7	-502.1	204.4	542.0	0.00	0.00	
3,600.0	10.26	157.85	3,551.1	-518.6	211.1	559.8	0.00	0.00	
3,700.0	10.26	157.85	3,649.5	-535.1	217.8	577.7	0.00	0.00	
3,800.0	10.26	157.85	3,747.9	-551.6	224.5	595.5	0.00	0.00	
3,900.0	10.26	157.85	3,846.3	-568.1	231.3	613.3	0.00	0.00	
4,000.0	10.26	157.85	3,944.7	-584.6	238.0	631.1	0.00	0.00	
4,100.0	10.26	157.85	4,043.1	-601.1	244.7	648.9	0.00	0.00	
4,200.0	10.26	157.85	4,141.5	-617.6	251.4	666.7	0.00	0.00	
4,300.0	10.26	157.85	4,239.9	-634.1	258.1	684.5	0.00	0.00	
4,400.0	10.26	157.85	4,338.3	-650.6	264.8	702.3	0.00	0.00	
4,500.0	10.26	157.85	4,436.7	-667.0	271.5	720.1	0.00	0.00	
4,600.0	10.26	157.85	4,535.1	-683.5	278.3	737.9	0.00	0.00	
4,700.0	10.26	157.85	4,633.5	-700.0	285.0	755.7	0.00	0.00	

Cathedral Energy Services

Planning Report

Database:	USA EDM 5000 Multi Users DB	Local Co-ordinate Reference:	Well 8503D-34 M27 496 was 8503D-28
Company:	EnCana Oil & Gas (USA) Inc	TVD Reference:	KBE @ 8121.0ft (Original Well Elev)
Project:	Story Gulch	MD Reference:	KBE @ 8121.0ft (Original Well Elev)
Site:	S27-T4S-R96W (M27 496)	North Reference:	True
Well:	8503D-34 M27 496 was 8503D-28	Survey Calculation Method:	Minimum Curvature
Wellbore:	DD		
Design:	Plan #2		

Planned Survey									
Measured Depth (ft)	Inclination (°)	Azimuth (°)	Vertical Depth (ft)	+N/-S (ft)	+E/-W (ft)	Vertical Section (ft)	Dogleg Rate (°/100ft)	Build Rate (°/100ft)	Comments / Formations
4,800.0	10.26	157.85	4,731.9	-716.5	291.7	773.5	0.00	0.00	
4,900.0	10.26	157.85	4,830.3	-733.0	298.4	791.3	0.00	0.00	
5,000.0	10.26	157.85	4,928.7	-749.5	305.1	809.1	0.00	0.00	
5,100.0	10.26	157.85	5,027.1	-766.0	311.8	826.9	0.00	0.00	
5,200.0	10.26	157.85	5,125.5	-782.5	318.5	844.7	0.00	0.00	
5,300.0	10.26	157.85	5,223.9	-799.0	325.3	862.5	0.00	0.00	
5,379.3	10.26	157.85	5,302.0	-812.1	330.6	876.7	0.00	0.00	WASATCH_G (TVD)
5,400.0	10.26	157.85	5,322.3	-815.5	332.0	880.3	0.00	0.00	
5,500.0	10.26	157.85	5,420.7	-832.0	338.7	898.2	0.00	0.00	
5,600.0	10.26	157.85	5,519.1	-848.5	345.4	916.0	0.00	0.00	
5,700.0	10.26	157.85	5,617.6	-865.0	352.1	933.8	0.00	0.00	
5,800.0	10.26	157.85	5,716.0	-881.5	358.8	951.6	0.00	0.00	
5,900.0	10.26	157.85	5,814.4	-898.0	365.5	969.4	0.00	0.00	
6,000.0	10.26	157.85	5,912.8	-914.5	372.3	987.2	0.00	0.00	
6,100.0	10.26	157.85	6,011.2	-930.9	379.0	1,005.0	0.00	0.00	
6,200.0	10.26	157.85	6,109.6	-947.4	385.7	1,022.8	0.00	0.00	
6,300.0	10.26	157.85	6,208.0	-963.9	392.4	1,040.6	0.00	0.00	
6,400.0	10.26	157.85	6,306.4	-980.4	399.1	1,058.4	0.00	0.00	
6,500.0	10.26	157.85	6,404.8	-996.9	405.8	1,076.2	0.00	0.00	
6,600.0	10.26	157.85	6,503.2	-1,013.4	412.5	1,094.0	0.00	0.00	
6,700.0	10.26	157.85	6,601.6	-1,029.9	419.3	1,111.8	0.00	0.00	
6,800.0	10.26	157.85	6,700.0	-1,046.4	426.0	1,129.6	0.00	0.00	
6,900.0	10.26	157.85	6,798.4	-1,062.9	432.7	1,147.4	0.00	0.00	
7,000.0	10.26	157.85	6,896.8	-1,079.4	439.4	1,165.2	0.00	0.00	
7,082.4	10.26	157.85	6,977.8	-1,093.0	444.9	1,179.9	0.00	0.00	Start Drop -2.00
7,100.0	9.91	157.85	6,995.2	-1,095.8	446.1	1,183.0	2.00	-2.00	
7,200.0	7.91	157.85	7,094.0	-1,110.2	451.9	1,198.5	2.00	-2.00	
7,300.0	5.91	157.85	7,193.2	-1,121.3	456.5	1,210.5	2.00	-2.00	
7,400.0	3.91	157.85	7,292.9	-1,129.2	459.7	1,219.0	2.00	-2.00	
7,500.0	1.91	157.85	7,392.7	-1,133.9	461.6	1,224.1	2.00	-2.00	
7,555.3	0.80	157.85	7,448.0	-1,135.1	462.1	1,225.4	2.00	-2.00	WILLIAMS_FORK (TVD)
7,595.3	0.00	0.00	7,488.0	-1,135.4	462.2	1,225.7	2.00	-2.00	EOD; Inc=0° - TOG (TVD)
7,600.0	0.00	241.02	7,492.7	-1,135.4	462.2	1,225.7	0.02	0.02	
7,700.0	0.02	241.02	7,592.7	-1,135.4	462.2	1,225.7	0.02	0.02	
7,800.0	0.03	241.02	7,692.7	-1,135.4	462.1	1,225.7	0.02	0.02	
7,900.0	0.05	241.02	7,792.7	-1,135.5	462.1	1,225.7	0.02	0.02	
8,000.0	0.07	241.02	7,892.7	-1,135.5	462.0	1,225.7	0.02	0.02	
8,100.0	0.08	241.02	7,992.7	-1,135.6	461.9	1,225.7	0.02	0.02	
8,200.0	0.10	241.02	8,092.7	-1,135.6	461.7	1,225.8	0.02	0.02	
8,300.0	0.11	241.02	8,192.7	-1,135.7	461.6	1,225.8	0.02	0.02	
8,400.0	0.13	241.02	8,292.7	-1,135.8	461.4	1,225.8	0.02	0.02	
8,500.0	0.15	241.02	8,392.7	-1,135.9	461.2	1,225.8	0.02	0.02	
8,600.0	0.16	241.02	8,492.7	-1,136.1	460.9	1,225.9	0.02	0.02	
8,700.0	0.18	241.02	8,592.7	-1,136.2	460.7	1,225.9	0.02	0.02	
8,786.3	0.19	241.02	8,679.0	-1,136.4	460.4	1,226.0	0.02	0.02	PRICE_Marker (TVD)
8,800.0	0.20	241.02	8,692.7	-1,136.4	460.4	1,226.0	0.02	0.02	
8,900.0	0.21	241.02	8,792.7	-1,136.6	460.1	1,226.0	0.02	0.02	
9,000.0	0.23	241.02	8,892.7	-1,136.7	459.8	1,226.1	0.02	0.02	
9,100.0	0.24	241.02	8,992.7	-1,136.9	459.4	1,226.1	0.02	0.02	
9,200.0	0.26	241.02	9,092.7	-1,137.2	459.0	1,226.2	0.02	0.02	
9,300.0	0.28	241.02	9,192.7	-1,137.4	458.6	1,226.2	0.02	0.02	
9,400.0	0.29	241.02	9,292.7	-1,137.6	458.2	1,226.3	0.02	0.02	

Cathedral Energy Services

Planning Report

Database:	USA EDM 5000 Multi Users DB	Local Co-ordinate Reference:	Well 8503D-34 M27 496 was 8503D-28
Company:	EnCana Oil & Gas (USA) Inc	TVD Reference:	KBE @ 8121.0ft (Original Well Elev)
Project:	Story Gulch	MD Reference:	KBE @ 8121.0ft (Original Well Elev)
Site:	S27-T4S-R96W (M27 496)	North Reference:	True
Well:	8503D-34 M27 496 was 8503D-28	Survey Calculation Method:	Minimum Curvature
Wellbore:	DD		
Design:	Plan #2		

Planned Survey

Measured Depth (ft)	Inclination (°)	Azimuth (°)	Vertical Depth (ft)	+N/-S (ft)	+E/-W (ft)	Vertical Section (ft)	Dogleg Rate (°/100ft)	Build Rate (°/100ft)	Comments / Formations
9,500.0	0.31	241.02	9,392.7	-1,137.9	457.7	1,226.4	0.02	0.02	
9,600.0	0.33	241.02	9,492.7	-1,138.1	457.2	1,226.5	0.02	0.02	
9,700.0	0.34	241.02	9,592.7	-1,138.4	456.7	1,226.5	0.02	0.02	
9,800.0	0.36	241.02	9,692.7	-1,138.7	456.2	1,226.6	0.02	0.02	
9,900.0	0.37	241.02	9,792.7	-1,139.0	455.6	1,226.7	0.02	0.02	
10,000.0	0.39	241.02	9,892.7	-1,139.4	455.0	1,226.8	0.02	0.02	
10,100.0	0.41	241.02	9,992.7	-1,139.7	454.4	1,226.9	0.02	0.02	
10,200.0	0.42	241.02	10,092.7	-1,140.0	453.8	1,227.0	0.02	0.02	
10,300.0	0.44	241.02	10,192.7	-1,140.4	453.1	1,227.1	0.02	0.02	
10,400.0	0.46	241.02	10,292.7	-1,140.8	452.5	1,227.2	0.02	0.02	
10,500.0	0.47	241.02	10,392.7	-1,141.2	451.7	1,227.3	0.02	0.02	
10,600.0	0.49	241.02	10,492.7	-1,141.6	451.0	1,227.4	0.02	0.02	
10,658.3	0.50	241.02	10,551.0	-1,141.8	450.6	1,227.5	0.02	0.02	CAMEO (TVD)
10,700.0	0.50	241.02	10,592.7	-1,142.0	450.3	1,227.5	0.02	0.02	
10,800.0	0.52	241.02	10,692.7	-1,142.4	449.5	1,227.7	0.02	0.02	
10,900.0	0.54	241.02	10,792.7	-1,142.9	448.7	1,227.8	0.02	0.02	
11,000.0	0.55	241.02	10,892.7	-1,143.3	447.8	1,227.9	0.02	0.02	
11,100.0	0.57	241.02	10,992.7	-1,143.8	447.0	1,228.0	0.02	0.02	
11,200.0	0.59	241.02	11,092.7	-1,144.3	446.1	1,228.2	0.02	0.02	
11,258.3	0.59	241.02	11,151.0	-1,144.6	445.6	1,228.3	0.02	0.02	ROLLINS (TVD)
11,300.0	0.60	241.02	11,192.7	-1,144.8	445.2	1,228.3	0.02	0.02	
11,408.4	0.62	241.02	11,301.0	-1,145.4	444.2	1,228.5	0.02	0.02	Drillers TD @ 11,301' TVD
11,479.4	0.62	241.02	11,372.0	-1,145.7	443.5	1,228.6	0.00	0.00	COZZETTE (TVD)
11,500.0	0.62	241.02	11,392.6	-1,145.8	443.3	1,228.6	0.00	0.00	
11,600.0	0.62	241.02	11,492.6	-1,146.4	442.4	1,228.8	0.00	0.00	
11,675.4	0.62	241.02	11,568.0	-1,146.8	441.7	1,228.9	0.00	0.00	CORCORAN (TVD)
11,700.0	0.62	241.02	11,592.6	-1,146.9	441.4	1,228.9	0.00	0.00	
11,800.0	0.62	241.02	11,692.6	-1,147.4	440.5	1,229.1	0.00	0.00	
11,892.4	0.62	241.02	11,785.0	-1,147.9	439.6	1,229.2	0.00	0.00	UPPER_SEGO (TVD)
11,900.0	0.62	241.02	11,792.6	-1,147.9	439.5	1,229.2	0.00	0.00	
12,000.0	0.62	241.02	11,892.6	-1,148.5	438.6	1,229.3	0.00	0.00	
12,100.0	0.62	241.02	11,992.6	-1,149.0	437.7	1,229.5	0.00	0.00	
12,142.4	0.62	241.02	12,035.0	-1,149.2	437.3	1,229.6	0.00	0.00	SEGO_BASE_TARGET (TVD)
12,200.0	0.62	241.02	12,092.6	-1,149.5	436.7	1,229.6	0.00	0.00	
12,300.0	0.62	241.02	12,192.6	-1,150.0	435.8	1,229.8	0.00	0.00	
12,408.4	0.62	241.02	12,301.0	-1,150.6	434.7	1,229.9	0.00	0.00	Permit TD @ 12,301' TVD

Targets

Target Name	Dip Angle (°)	Dip Dir. (°)	TVD (ft)	+N/-S (ft)	+E/-W (ft)	Northing (ft)	Easting (ft)	Latitude	Longitude
- hit/miss target									
- Shape									
M27 496 8503D-28 PBH	0.00	0.00	11,301.0	-1,145.4	444.2	1,677,800.50	2,251,434.27	39° 39' 51.38 N	108° 9' 33.68 W
- plan hits target center									
- Rectangle (sides W30.0 H50.0 D0.0)									
M27 496 8503D-28 TGT	0.00	0.00	7,488.0	-1,135.4	462.2	1,677,809.95	2,251,452.57	39° 39' 51.48 N	108° 9' 33.45 W
- plan hits target center									
- Point									

Cathedral Energy Services

Planning Report

Database:	USA EDM 5000 Multi Users DB	Local Co-ordinate Reference:	Well 8503D-34 M27 496 was 8503D-28
Company:	EnCana Oil & Gas (USA) Inc	TVD Reference:	KBE @ 8121.0ft (Original Well Elev)
Project:	Story Gulch	MD Reference:	KBE @ 8121.0ft (Original Well Elev)
Site:	S27-T4S-R96W (M27 496)	North Reference:	True
Well:	8503D-34 M27 496 was 8503D-28	Survey Calculation Method:	Minimum Curvature
Wellbore:	DD		
Design:	Plan #2		

Formations

Measured Depth (ft)	Vertical Depth (ft)	Name	Lithology	Dip (°)	Dip Direction (°)
1,030.8	1,023.0	A_GROOVE (TVD)			
1,186.3	1,176.0	B_GROOVE (TVD)			
2,163.9	2,138.0	Garden Gulch Member (TVD)			
5,379.3	5,302.0	WASATCH_G (TVD)			
7,555.3	7,448.0	WILLIAMS_FORK (TVD)			
7,595.3	7,488.0	TOG (TVD)			
8,786.3	8,679.0	PRICE_Marker (TVD)			
10,658.3	10,551.0	CAMEO (TVD)			
11,258.3	11,151.0	ROLLINS (TVD)			
11,479.4	11,372.0	COZZETTE (TVD)			
11,675.4	11,568.0	CORCORAN (TVD)			
11,892.4	11,785.0	UPPER_SEGO (TVD)			
12,142.4	12,035.0	SEGO_BASE_TARGET (TVD)			

Plan Annotations

Measured Depth (ft)	Vertical Depth (ft)	Local Coordinates		Comment
		+N/-S (ft)	+E/-W (ft)	
200.0	200.0	0.0	0.0	KOP @ 200'
712.9	710.2	-42.4	17.3	EOB; Inc=10.26°
7,082.4	6,977.8	-1,093.0	444.9	Start Drop -2.00
7,595.3	7,488.0	-1,135.4	462.2	EOD; Inc=0°
11,408.4	11,301.0	-1,145.4	444.2	Drillers TD @ 11,301' TVD
12,408.4	12,301.0	-1,150.6	434.7	Permit TD @ 12,301' TVD